

Inspection Photos
Location Name: Fritzler Pad
Location ID: 319142



Photo 1: Wellhead Sign

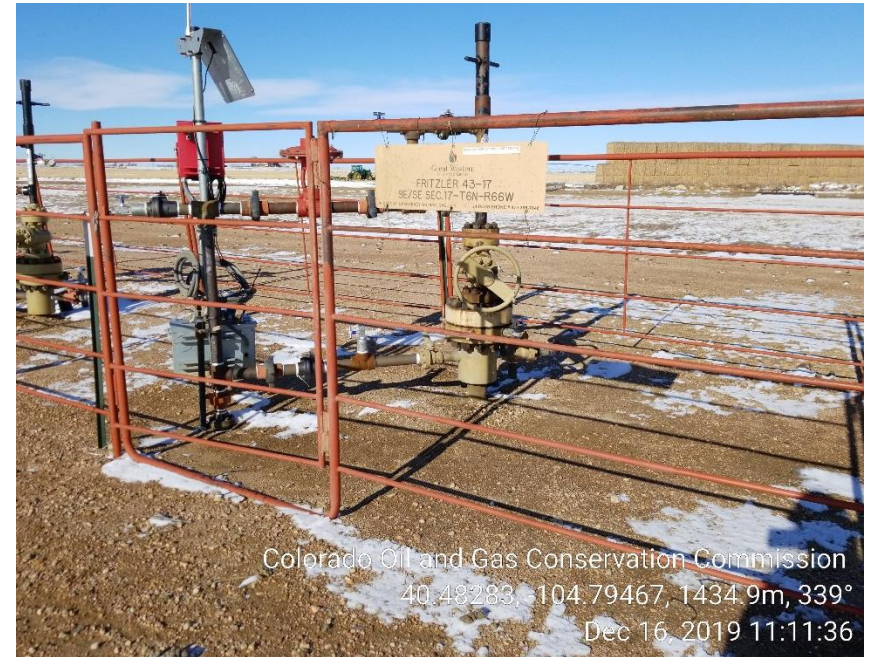


Photo 2: Wellhead; equipment connected



Inspection Photos
Location Name: Fritzler Pad
Location ID: 319142



Photo 3: Stained soil removed

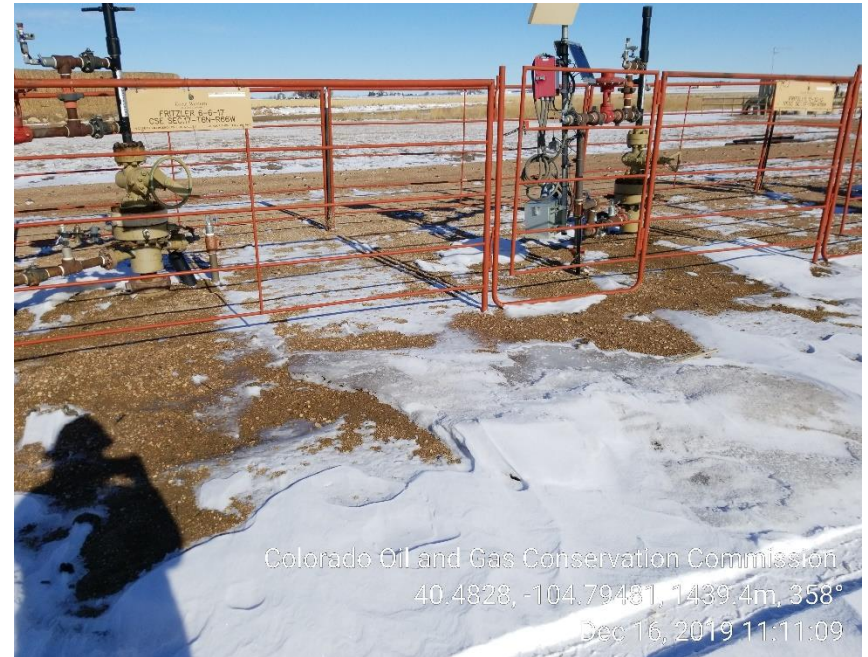


Photo 4: Pallets removed



Inspection Photos
Location Name: Fritzler Pad
Location ID: 319142



Photo 5: Wellhead Sign



Photo 6: Wellhead; equipment connected

Inspection Photos
Location Name: Fritzler Pad
Location ID: 319142



Photo 7: Wellhead Sign

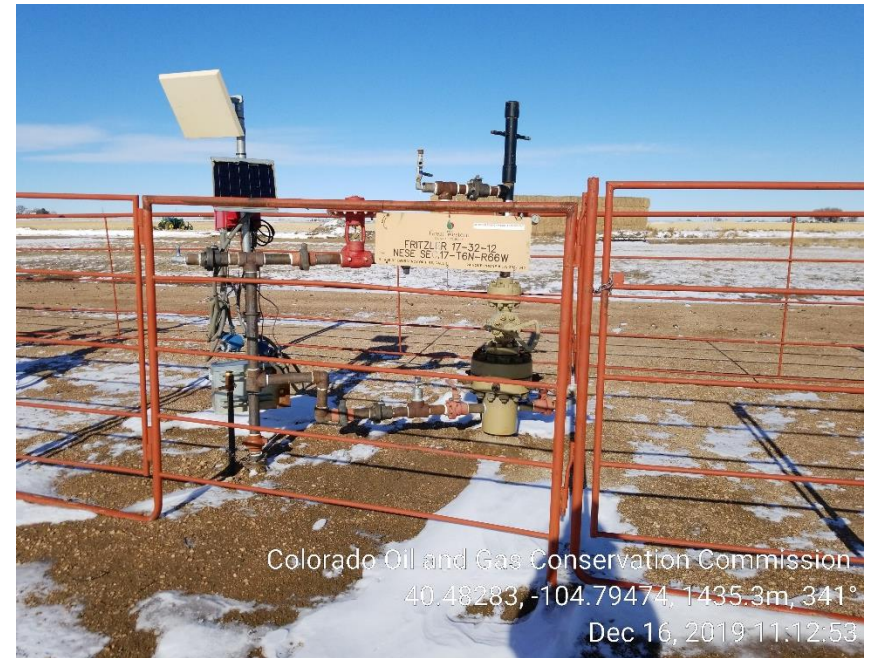


Photo 8: Wellhead; equipment connected



Inspection Photos
Location Name: Fritzler Pad
Location ID: 319142



Photo 9: Wellhead Sign

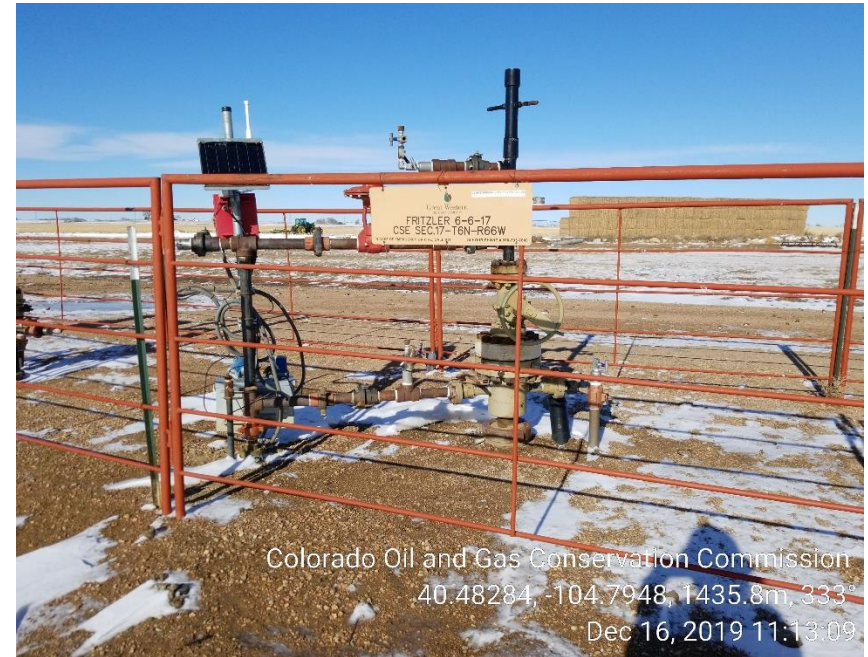


Photo 10: Wellhead; equipment connected

Inspection Photos
Location Name: Fritzler Pad
Location ID: 319142



Photo 11: Wellhead Sign

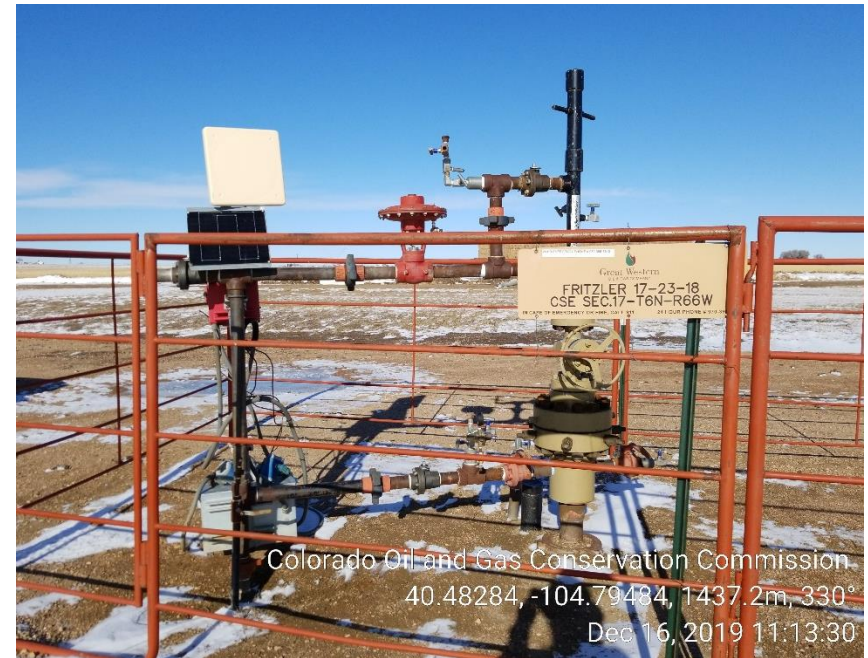


Photo 12: Wellhead; equipment connected

Inspection Photos
Location Name: Fritzler Pad
Location ID: 319142



Photo 13: Wellhead Sign



Photo 14: Wellhead; equipment connected



Inspection Photos
Location Name: Fritzler Pad
Location ID: 319142



Photo 15: Wellhead Sign

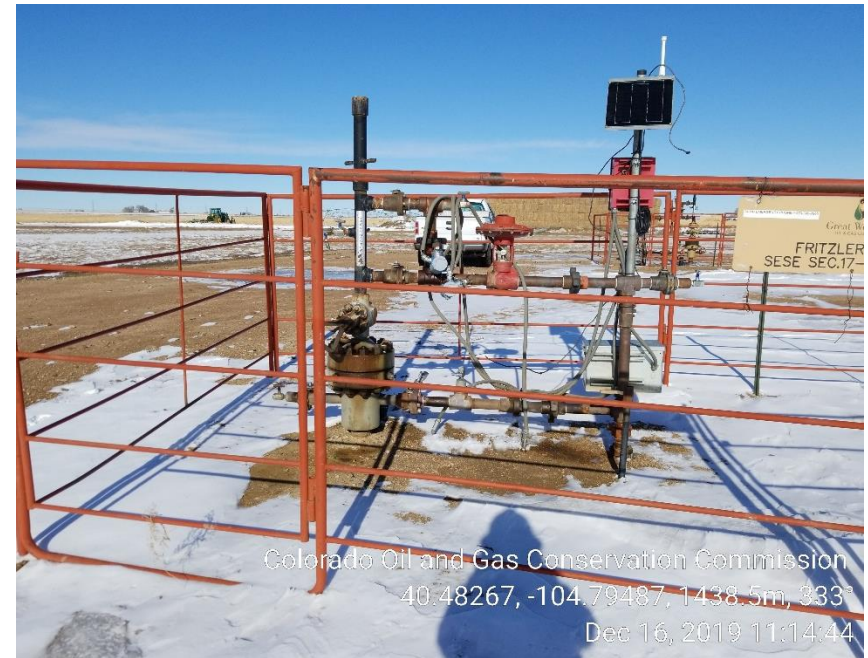


Photo 16: Wellhead ; equipment connected



Inspection Photos
Location Name: Fritzler Pad
Location ID: 319142



Photo 17: Area with stained soil (covered in snow)



Photo 18: Stained soil



Inspection Photos
Location Name: Fritzler Pad
Location ID: 319142



Photo 19: Stained soil



Photo 20: Wellhead Sign

Inspection Photos
Location Name: Fritzler Pad
Location ID: 319142

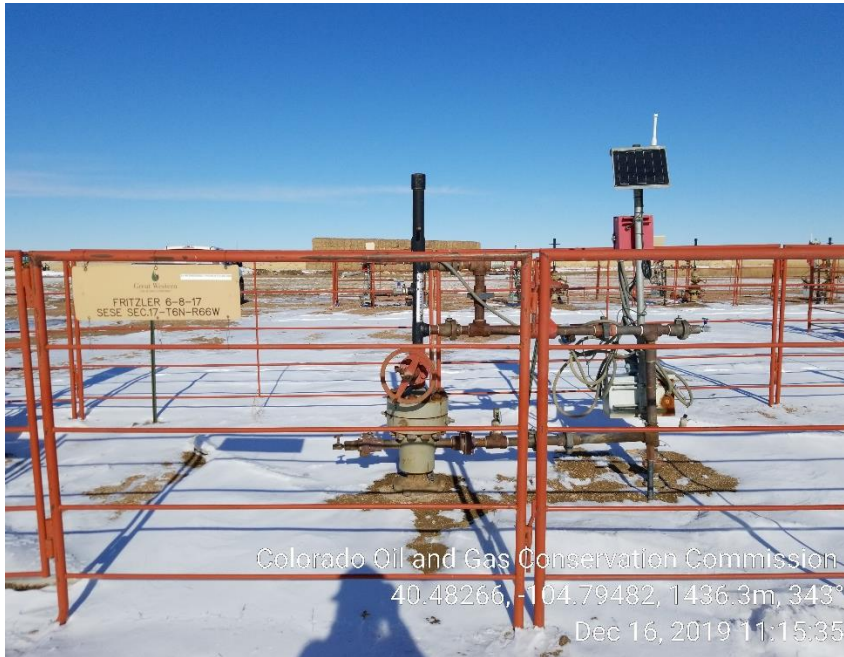


Photo 21: Wellhead; equipment connected



Photo 22: Wellhead Sign



Inspection Photos
Location Name: Fritzler Pad
Location ID: 319142

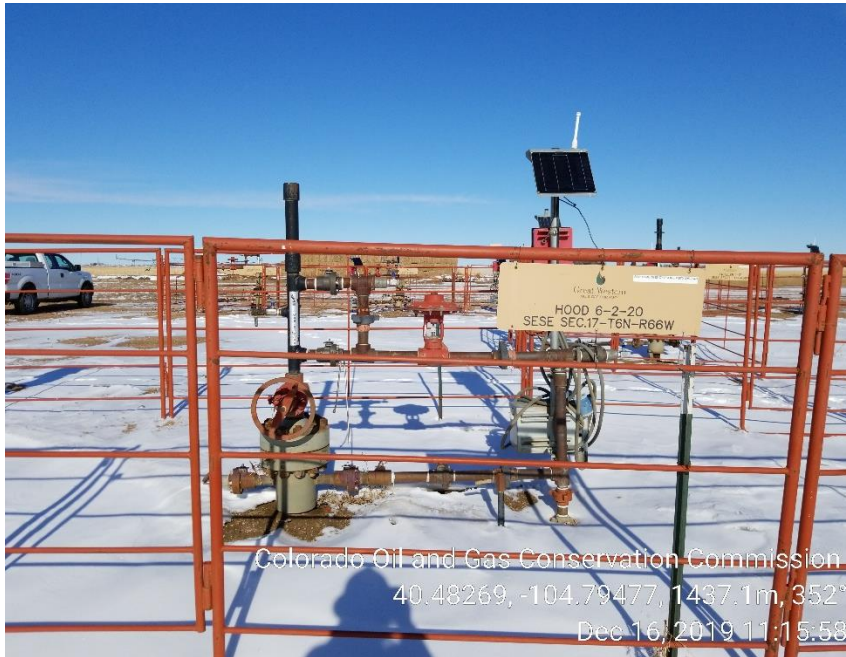


Photo 23: Wellhead; equipment connected



Photo 24: Wellhead Sign



Inspection Photos
Location Name: Fritzler Pad
Location ID: 319142

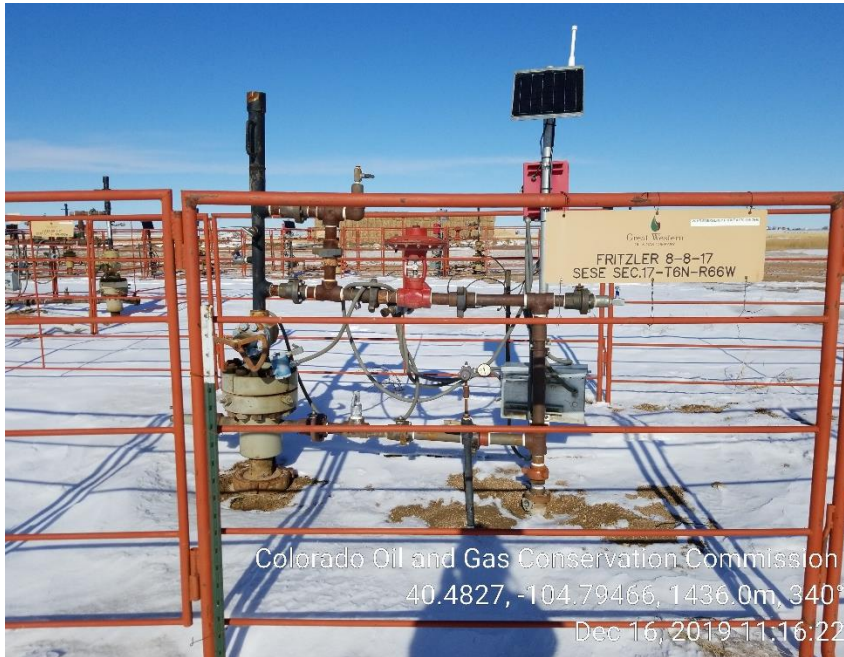


Photo 25: Wellhead; equipment connected



Photo 26: Tank Battery Signs



Inspection Photos
Location Name: Fritzler Pad
Location ID: 319142



Photo 27: Tank Battery



Photo 28: Labeling visible



Inspection Photos
Location Name: Fritzler Pad
Location ID: 319142



Photo 29: Labeling visible

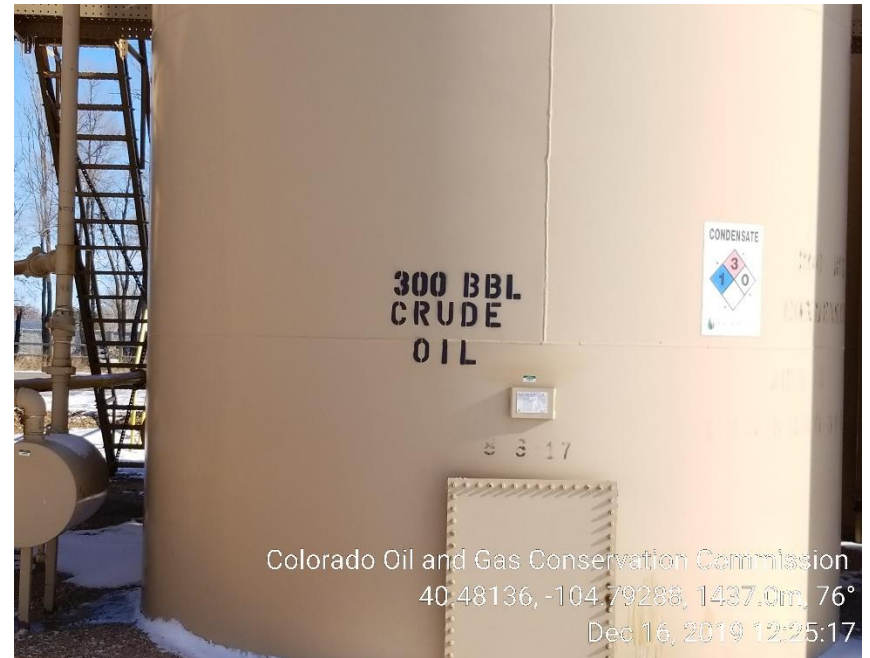


Photo 30: Labeling visible

Inspection Photos
Location Name: Fritzler Pad
Location ID: 319142



Photo 31: Labeling Visible



Photo 32: Labeling visible

Inspection Photos
Location Name: Fritzler Pad
Location ID: 319142



Photo 33: Labeling visible



Photo 34: labeling visible

Inspection Photos
Location Name: Fritzler Pad
Location ID: 319142



Photo 35: Labeling visible



Photo 36: Labeling visible

Inspection Photos
Location Name: Fritzler Pad
Location ID: 319142



Photo 37: Labeling to H2O north tank (not visible to road)



Photo 38: Labeling placed on top of tank, not visible to roadside.



Inspection Photos
Location Name: Fritzler Pad
Location ID: 319142



Photo 39: Sight glass removed, appears stained soil has been removed.

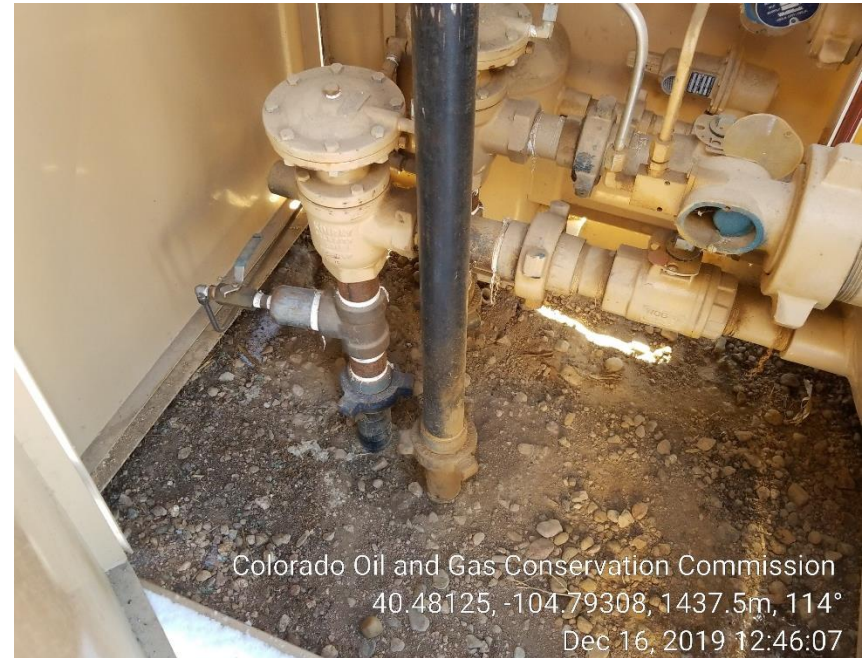


Photo 40: Trash removed

Inspection Photos
Location Name: Fritzler Pad
Location ID: 319142



Photo 41: Trash removed



Photo 42: Stained soil removed