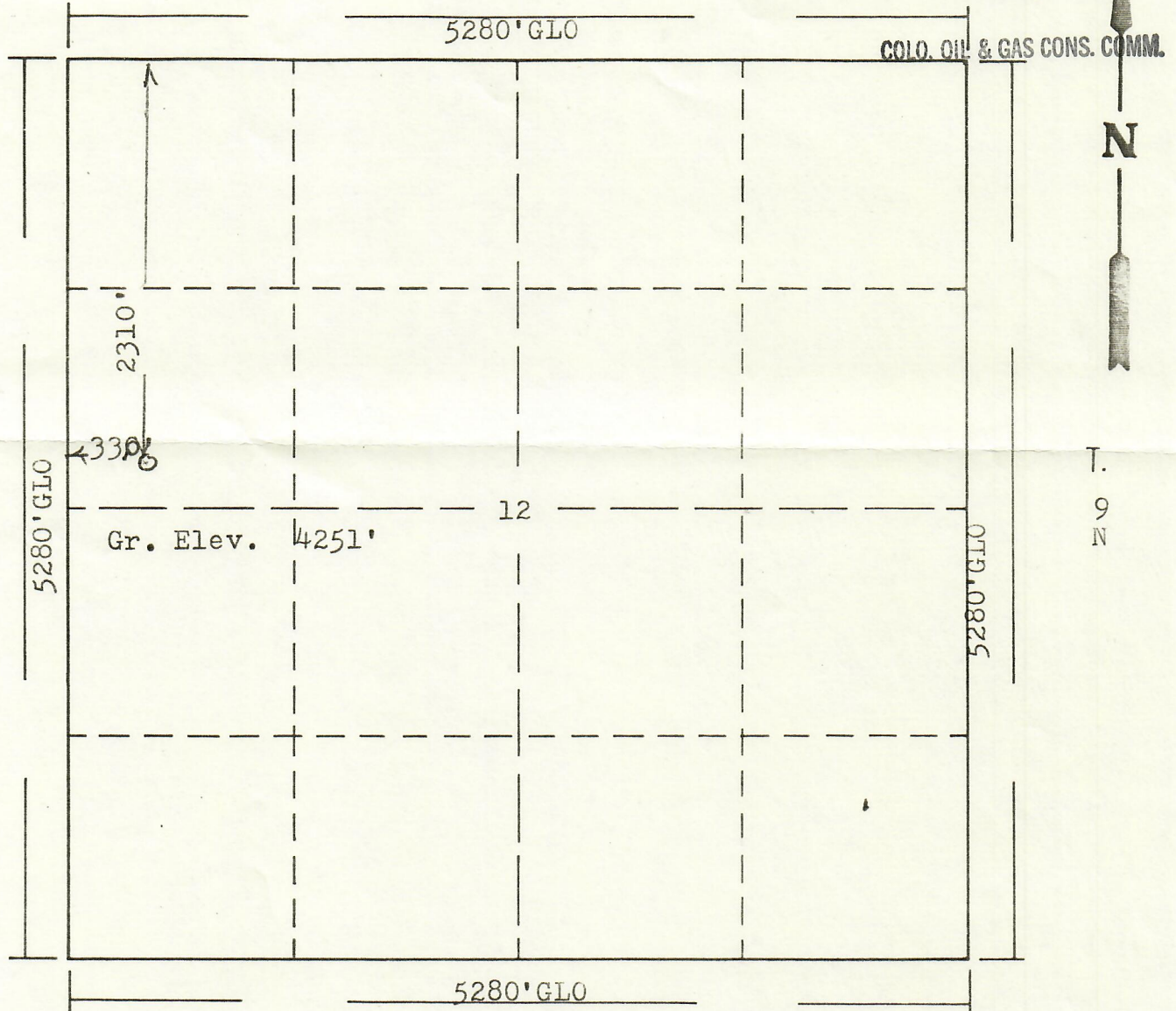




R. 54W

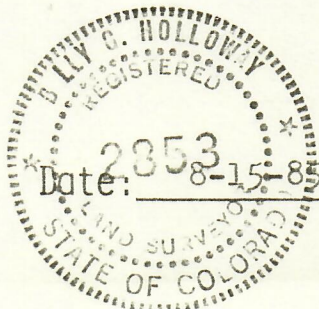
RECEIVED  
8/19/85  
AUG 26 1985



Scale: 1"=1000'

Powers Elevation of Denver, Colorado has in accordance with a request from Mr. Gear, for Crosswest Corp. determined the location of No.1 Ruf to be CSWSWNW Section 12, Township 9N Range 54W of the 6th principal Meridian, Logan County, Colorado

I hereby certify that this plat is an accurate representation of a correct survey showing the location of



B. L. Holloway  
Licensed Land Surveyor No. 2853  
State of Colorado