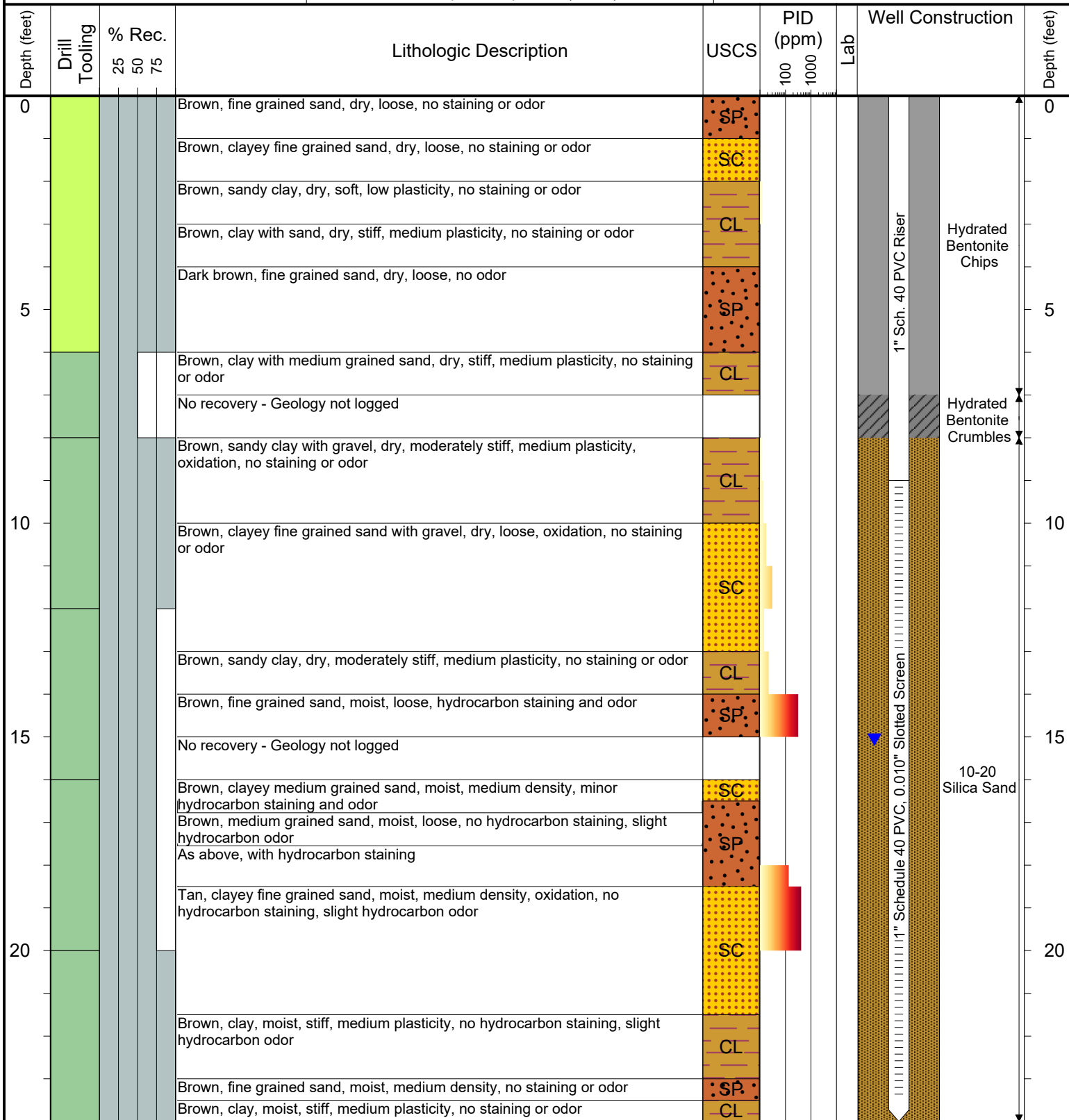




6855 W. 119th Ave
Broomfield, Colorado 80020

CLIENT: Kerr-McGee Oil and Gas Onshore LP	Brown 32-35
LOGGED BY: Brandon LeVasseur	
PROJECT MANAGER: Robert Cornez	BORING / WELL ID: BH01
DRILLING CONTRACTOR: Tasman Geosciences, Inc.	
DRILLING EQUIPMENT: AMS Powerprobe 9300-SK	SURFACE COMPLETION: Flush Mount
DRILL BIT SIZE (INCHES): 2.375"	LATITUDE (WGS 1984): 40.180155094
DATE STARTED - COMPLETED: 6/27/19	LONGITUDE (WGS 1984): -104.751622472
TOTAL WELL DEPTH (FT. BGS): 24	CASING ELEVATION (FT. AMSL): 5002.577
DEPTH TO WATER (FT. BGS): 15.06 (7/8/19) ▼	GROUND ELEVATION (FT. AMSL): 5002.807



Drilling / Sample Method:

Macro-Core
 Hydrovac
 CME - Hollow Stem Auger
 Hand Auger
 Expendable Well Tip

Laboratory Sample Types:

Geotechnical Lab
 Analytical Chemistry Lab



6855 W. 119th Ave
Broomfield, Colorado 80020

CLIENT: Kerr-McGee Oil and Gas Onshore LP

LOGGED BY: Brandon LeVasseur

PROJECT MANAGER: Robert Cornez

DRILLING CONTRACTOR: Tasman Geosciences, Inc.

DRILLING EQUIPMENT: AMS Powerprobe 9300-SK

DRILL BIT SIZE (INCHES): 2.375"

DATE STARTED - COMPLETED: 6/27/19

TOTAL WELL DEPTH (FT. BGS): 23

DEPTH TO WATER (FT. BGS): 15.22 (7/8/19)

Brown 32-35

BORING / WELL ID: BH02

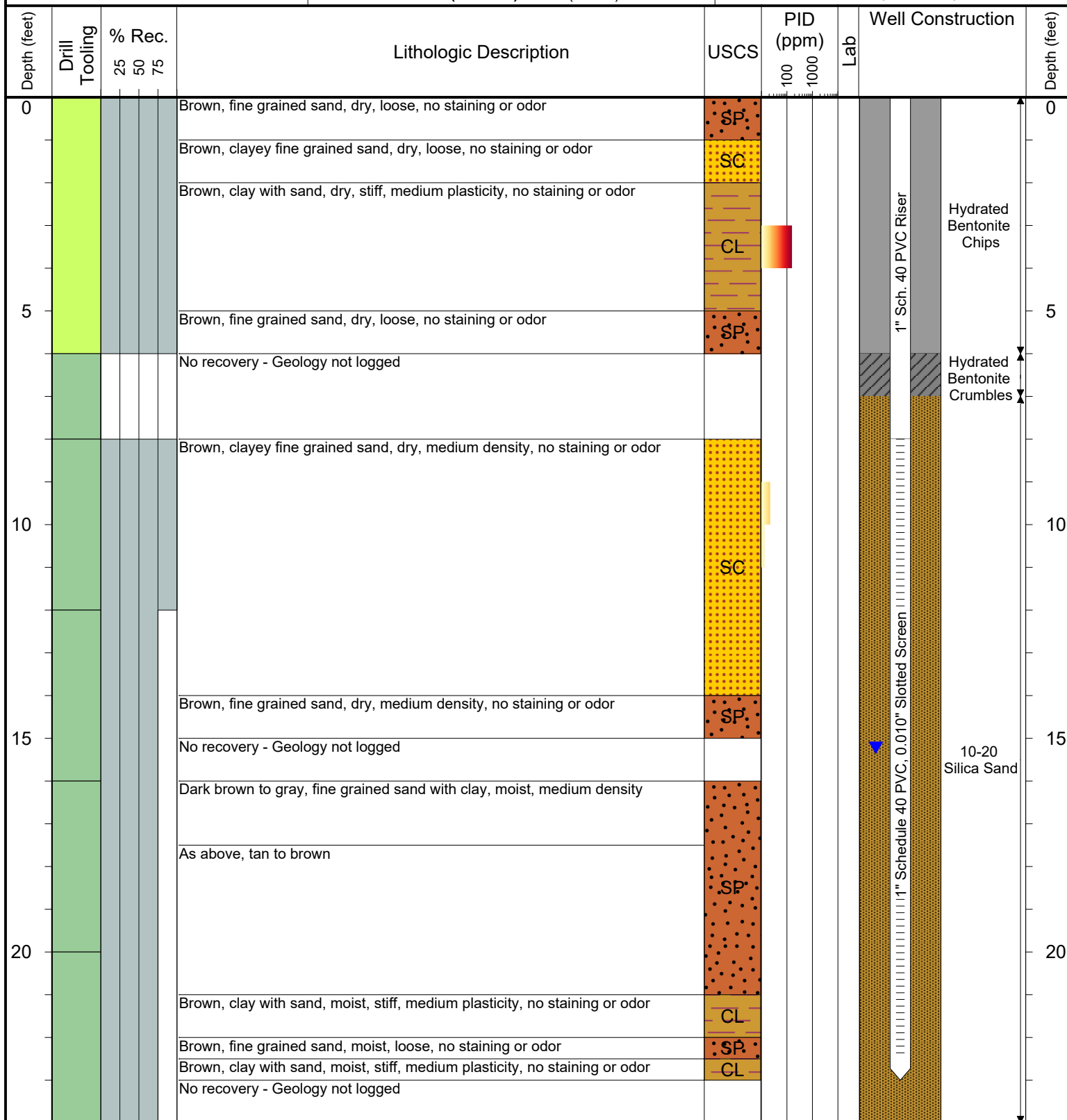
SURFACE COMPLETION: Flush Mount

LATITUDE (WGS 1984): 40.180070381

LONGITUDE (WGS 1984): -104.751436468

CASING ELEVATION (FT. AMSL): 5003.487

GROUND ELEVATION (FT. AMSL): 5003.677



Drilling / Sample Method:

Macro-Core Hydrovac CME - Hollow Stem Auger
Expendable Well Tip Hand Auger

Laboratory Sample Types:

Geotechnical Lab
Analytical Chemistry Lab



6855 W. 119th Ave
Broomfield, Colorado 80020

CLIENT: Kerr-McGee Oil and Gas Onshore LP	Brown 32-35
LOGGED BY: Brandon LeVasseur	
PROJECT MANAGER: Robert Cornez	BORING / WELL ID: BH03
DRILLING CONTRACTOR: Tasman Geosciences, Inc.	
DRILLING EQUIPMENT: AMS Powerprobe 9300-SK	SURFACE COMPLETION: Flush Mount
DRILL BIT SIZE (INCHES): 2.375"	LATITUDE (WGS 1984): 40.18000157618
DATE STARTED - COMPLETED: 6/27/19	LONGITUDE (WGS 1984): -104.75172676346
TOTAL WELL DEPTH (FT. BGS): 23	CASING ELEVATION (FT. AMSL): 5004.907
DEPTH TO WATER (FT. BGS): 16.55 (7/8/19) ▼	GROUND ELEVATION (FT. AMSL): 5005.087

Depth (feet)	Drill Tooling	% Rec. 25 50 75			Lithologic Description	USCS	PID (ppm)		Lab	Well Construction	Depth (feet)
							100	1000			
0					Brown, fine grained sand, dry, loose, no staining or odor	SP					0
					Brown, clayey fine grained sand with gravel, dry, loose, no staining or odor	SC				1" Sch. 40 PVC Riser	
					Brown, fine grained sand with gravel, dry, loose, no staining or odor	SP				Hydrated Bentonite Chips	
5					No recovery - Geology not logged						5
					Brown, clayey fine grained sand with gravel, dry, loose, no staining or odor	SC				Hydrated Bentonite Crumbles	
					No recovery - Geology not logged						
10					Tan, fine grained sand, dry, loose, oxidation, no staining or odor	SP				10-20 Silica Sand	
					No recovery - Geology not logged					11" Schedule 40 PVC, 0.010" Slotted Screen	
15											15
20											20

Drilling / Sample Method:

Macro-Core Hydrovac CME - Hollow Stem Auger
Expendable Well Tip Hand Auger

Laboratory Sample Types:

Geotechnical Lab
Analytical Chemistry Lab



6855 W. 119th Ave
Broomfield, Colorado 80020

CLIENT: Kerr-McGee Oil and Gas Onshore LP

LOGGED BY: Brandon LeVasseur

PROJECT MANAGER: Robert Cornez

DRILLING CONTRACTOR: Tasman Geosciences, Inc.

DRILLING EQUIPMENT: AMS Powerprobe 9300-SK

DRILL BIT SIZE (INCHES): 2.375"

DATE STARTED - COMPLETED: 6/27/19

TOTAL WELL DEPTH (FT. BGS): 23

DEPTH TO WATER (FT. BGS): 16.23 (7/8/19)

Brown 32-35

BORING / WELL ID: BH04

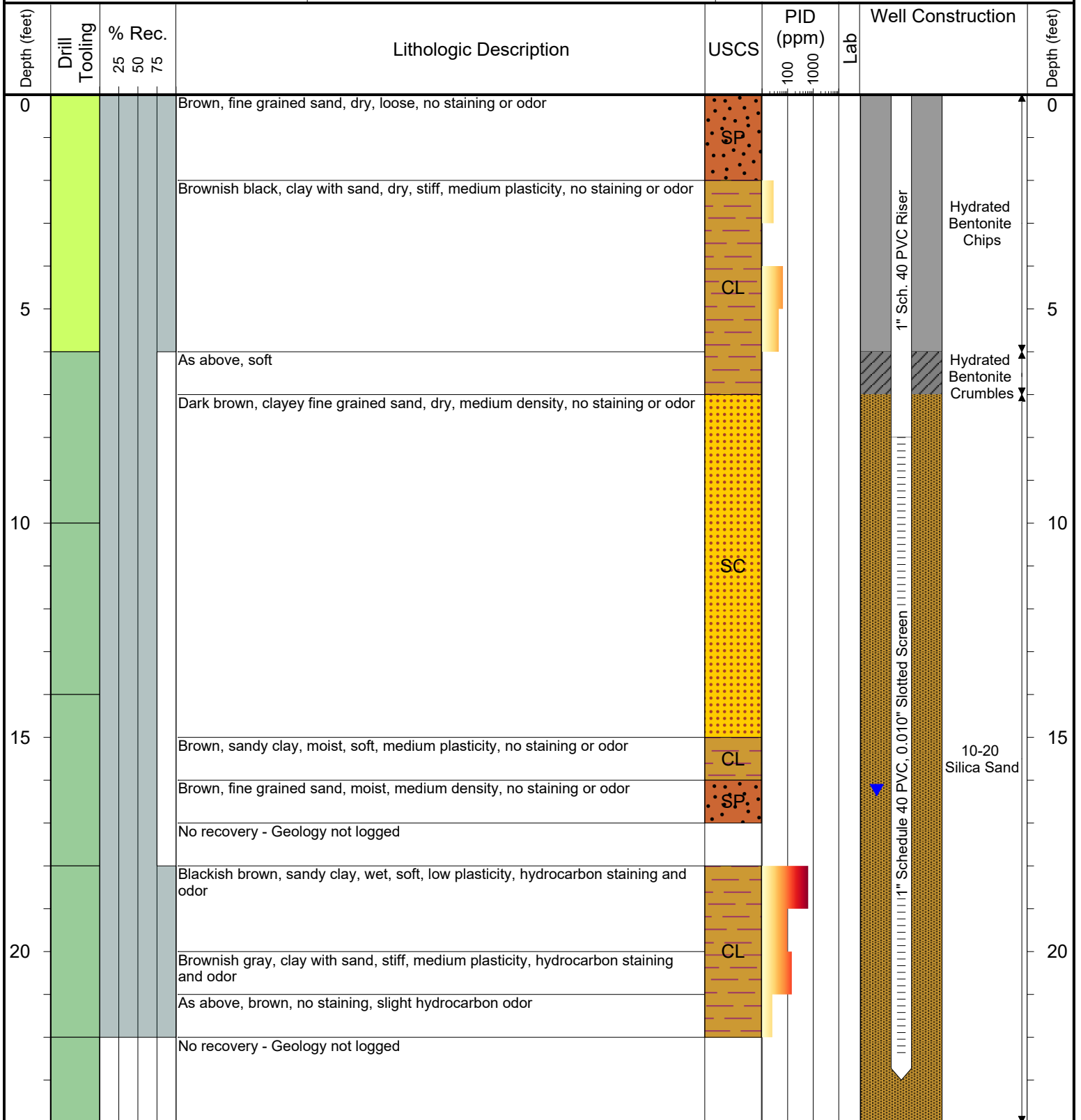
SURFACE COMPLETION: Flush Mount

LATITUDE (WGS 1984): 40.180017247

LONGITUDE (WGS 1984): -104.751577697

CASING ELEVATION (FT. AMSL): 5004.667

GROUND ELEVATION (FT. AMSL): 5004.847



Drilling / Sample Method:

Macro-Core Hydrovac CME - Hollow Stem Auger
Expendable Well Tip Hand Auger

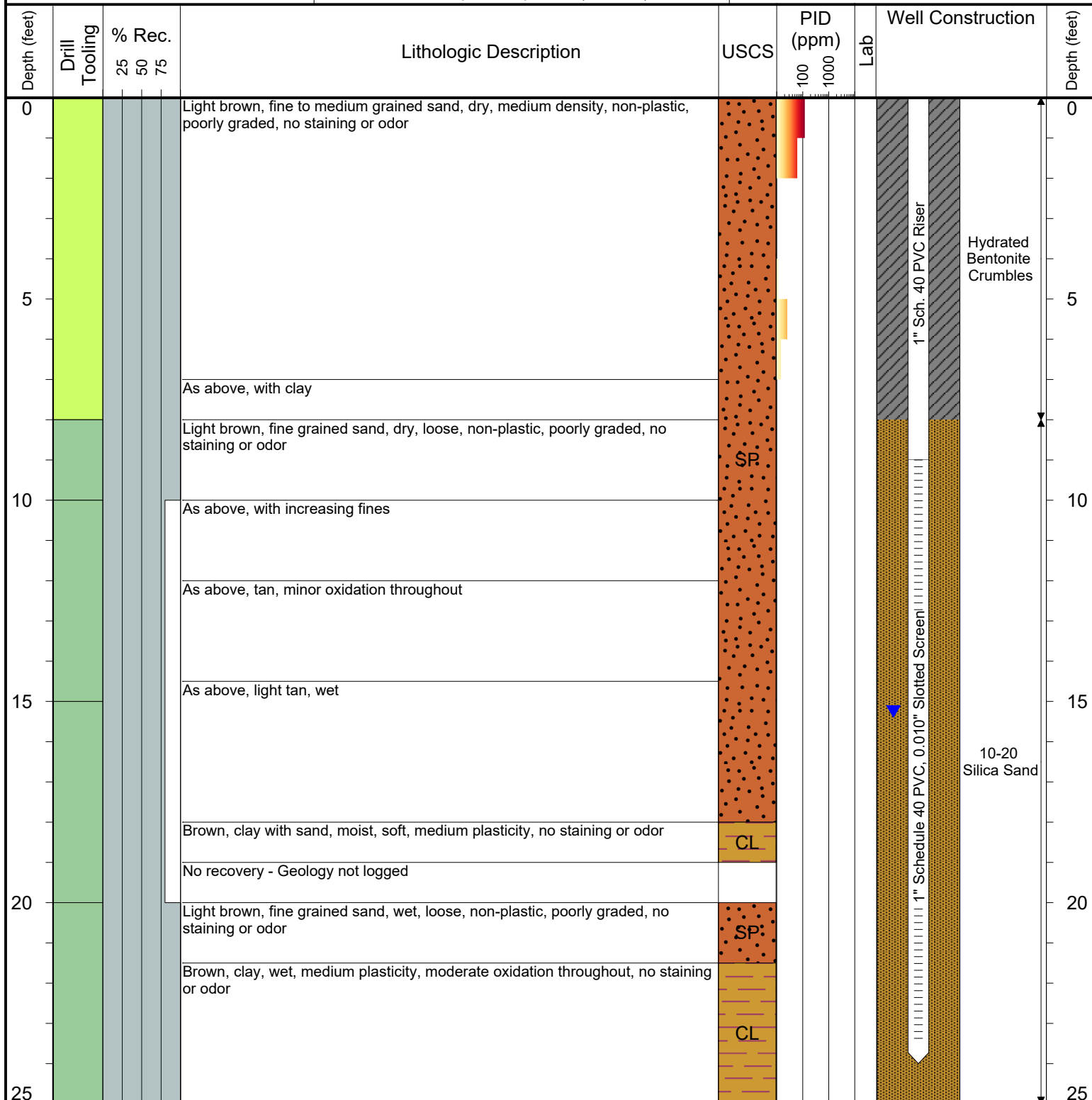
Laboratory Sample Types:

Geotechnical Lab
Analytical Chemistry Lab



6855 W. 119th Ave
Broomfield, Colorado 80020

CLIENT: Kerr-McGee Oil and Gas Onshore LP	Brown 32-35
LOGGED BY: Robert Aronoff	
PROJECT MANAGER: Robert Cornez	BORING / WELL ID: BH05
DRILLING CONTRACTOR: Tasman Geosciences, Inc.	
DRILLING EQUIPMENT: AMS Powerprobe 9300-SK	SURFACE COMPLETION: Flush Mount
DRILL BIT SIZE (INCHES): 2.375"	LATITUDE (WGS 1984): 40.180179378
DATE STARTED - COMPLETED: 8/30/2019	LONGITUDE (WGS 1984): -104.751780151
TOTAL WELL DEPTH (FT. BGS): 24	CASING ELEVATION (FT. AMSL): 5002.527
DEPTH TO WATER (FT. BGS): 15.25 (10/25/19) ▼	GROUND ELEVATION (FT. AMSL): 5002.897



Drilling / Sample Method:

Macro-Core
 Hydrovac
 CME - Hollow Stem Auger
 Hand Auger
 Expendable Well Tip

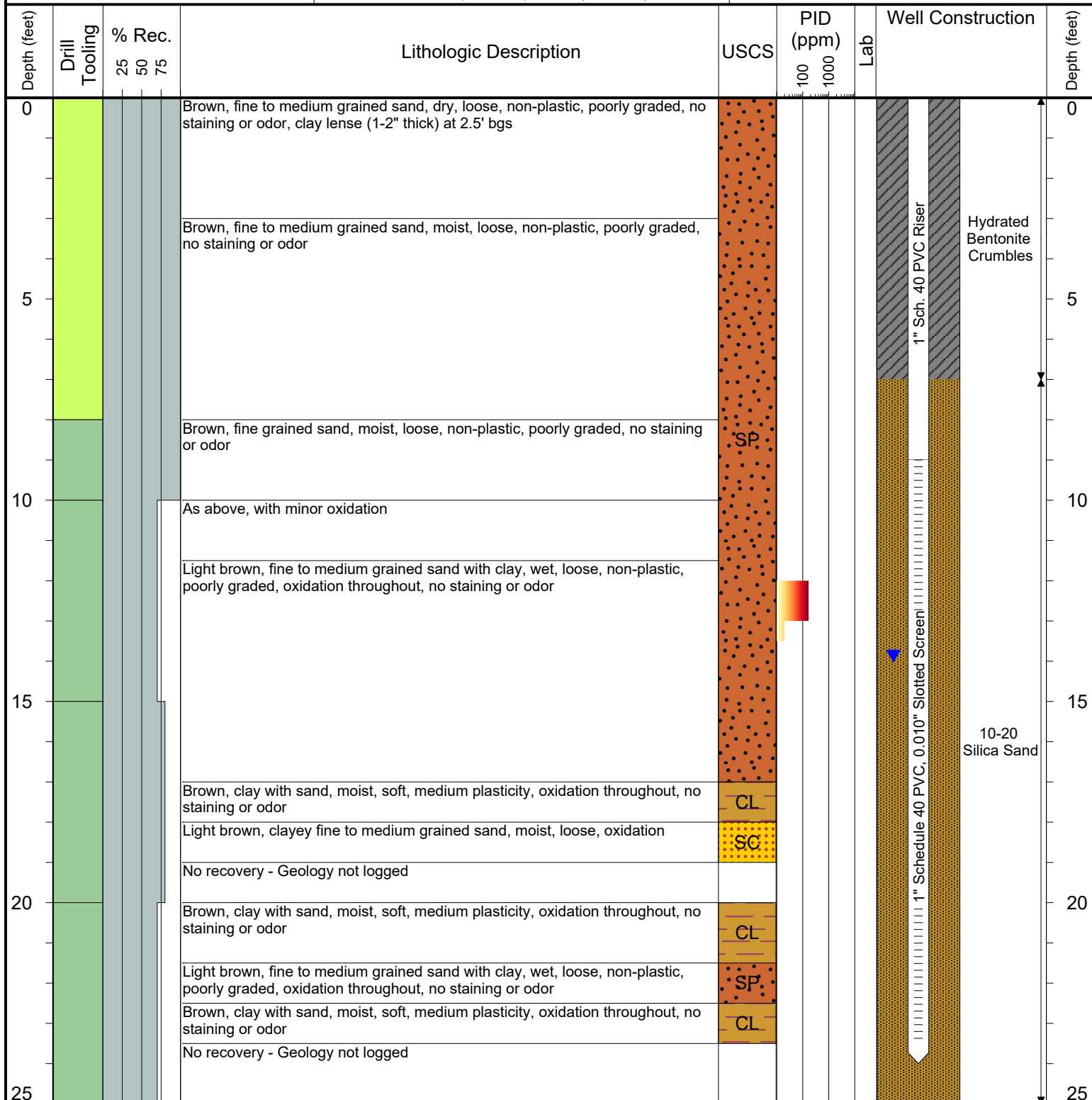
Laboratory Sample Types:

Geotechnical Lab
 Analytical Chemistry Lab



6855 W. 119th Ave
Broomfield, Colorado 80020

CLIENT: Kerr-McGee Oil and Gas Onshore LP	Brown 32-35
LOGGED BY: Robert Aronoff	
PROJECT MANAGER: Robert Cornez	BORING / WELL ID: BH06
DRILLING CONTRACTOR: Tasman Geosciences, Inc.	
DRILLING EQUIPMENT: AMS Powerprobe 9300-SK	SURFACE COMPLETION: Flush Mount
DRILL BIT SIZE (INCHES): 2.375"	LATITUDE (WGS 1984): 40.180254495
DATE STARTED - COMPLETED: 8/30/2019	LONGITUDE (WGS 1984): -104.751642585
TOTAL WELL DEPTH (FT. BGS): 24	CASING ELEVATION (FT. AMSL): 5000.897
DEPTH TO WATER (FT. BGS): 13.87 (10/25/19) ▼	GROUND ELEVATION (FT. AMSL): 5001.277



Drilling / Sample Method:

Macro-Core
 Hydrovac
 CME - Hollow Stem Auger
 Expendable Well Tip
 Hand Auger

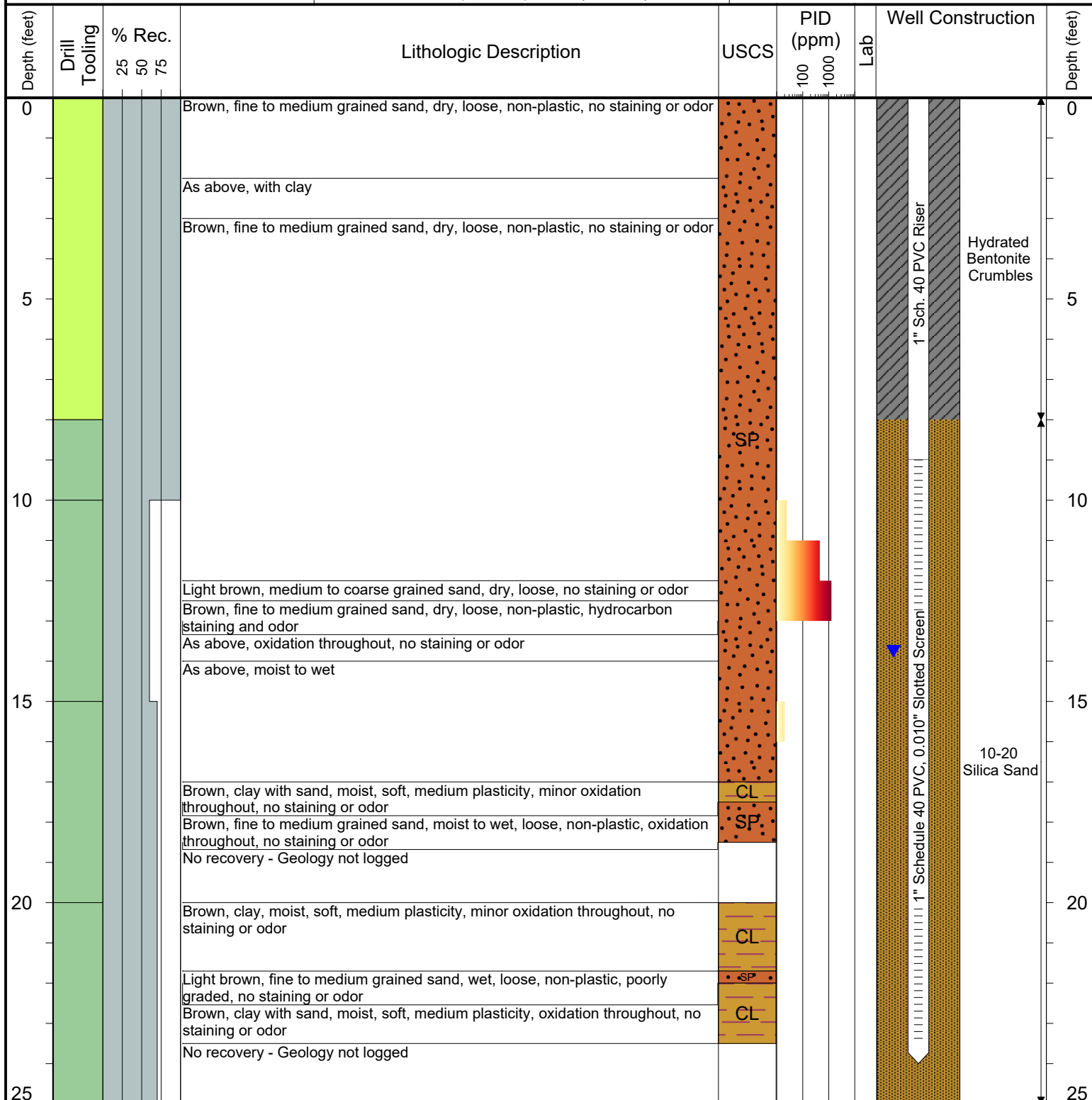
Laboratory Sample Types:

Geotechnical Lab
 Analytical Chemistry Lab



6855 W. 119th Ave
Broomfield, Colorado 80020

CLIENT: Kerr-McGee Oil and Gas Onshore LP	Brown 32-35
LOGGED BY: Robert Aronoff	
PROJECT MANAGER: Robert Cornez	BORING / WELL ID: BH07
DRILLING CONTRACTOR: Tasman Geosciences, Inc.	
DRILLING EQUIPMENT: AMS Powerprobe 9300-SK	SURFACE COMPLETION: Flush Mount
DRILL BIT SIZE (INCHES): 2.375"	LATITUDE (WGS 1984): 40.180216143
DATE STARTED - COMPLETED: 8/30/2019	LONGITUDE (WGS 1984): -104.751475289
TOTAL WELL DEPTH (FT. BGS): 24	CASING ELEVATION (FT. AMSL): 5001.097
DEPTH TO WATER (FT. BGS): 13.75 (10/25/19) ▼	GROUND ELEVATION (FT. AMSL): 5001.457



Drilling / Sample Method:

- Macro-Core
- Hydrovac
- CME - Hollow Stem Auger
- Expendable Well Tip
- Hand Auger

Laboratory Sample Types:

- Geotechnical Lab
- Analytical Chemistry Lab



6855 W. 119th Ave
Broomfield, Colorado 80020

CLIENT: Kerr-McGee Oil and Gas Onshore LP

LOGGED BY: Brandon LeVasseur

PROJECT MANAGER: Robert Cornez

DRILLING CONTRACTOR: Site Services Drilling, LLC

DRILLING EQUIPMENT: CME 75

DRILL BIT SIZE (INCHES): 6"

DATE STARTED - COMPLETED: 10/9/2019

TOTAL WELL DEPTH (FT. BGS): 24

DEPTH TO WATER (FT. BGS): 14.11 (10/25/19) ▼

Brown 32-35

BORING / WELL ID: BH08

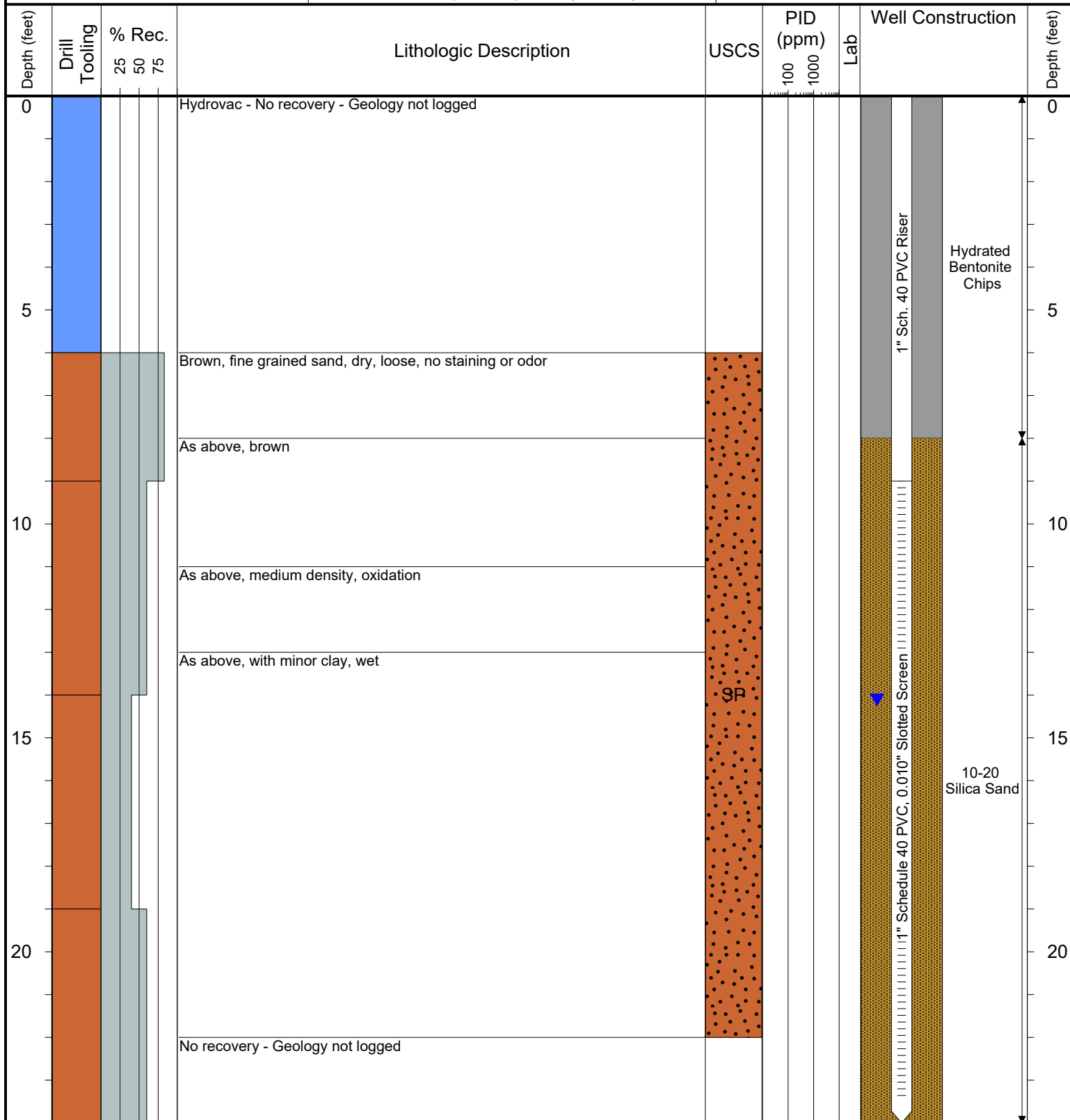
SURFACE COMPLETION: Flush Mount

LATITUDE (WGS 1984): 40.180334269

LONGITUDE (WGS 1984): -104.751899194

CASING ELEVATION (FT. AMSL): 5001.017

GROUND ELEVATION (FT. AMSL): 5001.107



Drilling / Sample Method:

Macro-Core
 Hydrovac
 CME - Hollow Stem Auger
 Expendable Well Tip
 Hand Auger

Laboratory Sample Types:

Geotechnical Lab
 Analytical Chemistry Lab



6855 W. 119th Ave
Broomfield, Colorado 80020

CLIENT: Kerr-McGee Oil and Gas Onshore LP

LOGGED BY: Brandon LeVasseur

PROJECT MANAGER: Robert Cornez

DRILLING CONTRACTOR: Site Services Drilling, LLC

DRILLING EQUIPMENT: CME 75

DRILL BIT SIZE (INCHES): 6"

DATE STARTED - COMPLETED: 10/9/2019

TOTAL WELL DEPTH (FT. BGS): 24

DEPTH TO WATER (FT. BGS): 13.59 (10/25/19) ▼

Brown 32-35

BORING / WELL ID: BH09

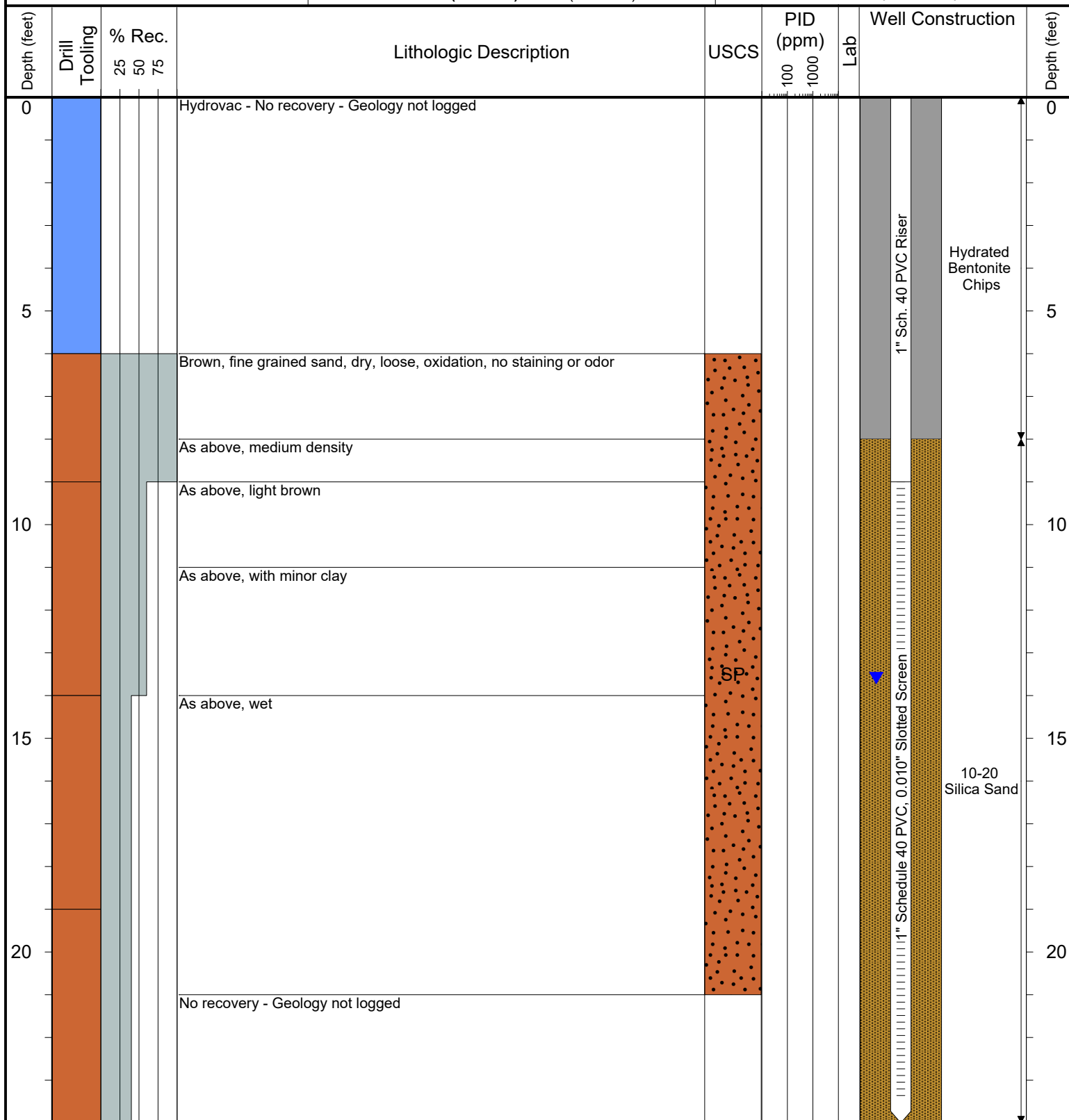
SURFACE COMPLETION: Flush Mount

LATITUDE (WGS 1984): 40.180383496

LONGITUDE (WGS 1984): -104.751709146

CASING ELEVATION (FT. AMSL): 5000.177

GROUND ELEVATION (FT. AMSL): 5000.447



Drilling / Sample Method:

Macro-Core Hydrovac CME - Hollow Stem Auger
 Expendable Well Tip Hand Auger

Laboratory Sample Types:

Geotechnical Lab
 Analytical Chemistry Lab



6855 W. 119th Ave
Broomfield, Colorado 80020

CLIENT: Kerr-McGee Oil and Gas Onshore LP

LOGGED BY: Brandon LeVasseur

PROJECT MANAGER: Robert Cornez

DRILLING CONTRACTOR: Site Services Drilling, LLC

DRILLING EQUIPMENT: CME 75

DRILL BIT SIZE (INCHES): 6"

DATE STARTED - COMPLETED: 10/9/2019

TOTAL WELL DEPTH (FT. BGS): 24

DEPTH TO WATER (FT. BGS): 12.55 (10/25/19)

Brown 32-35

BORING / WELL ID: BH10

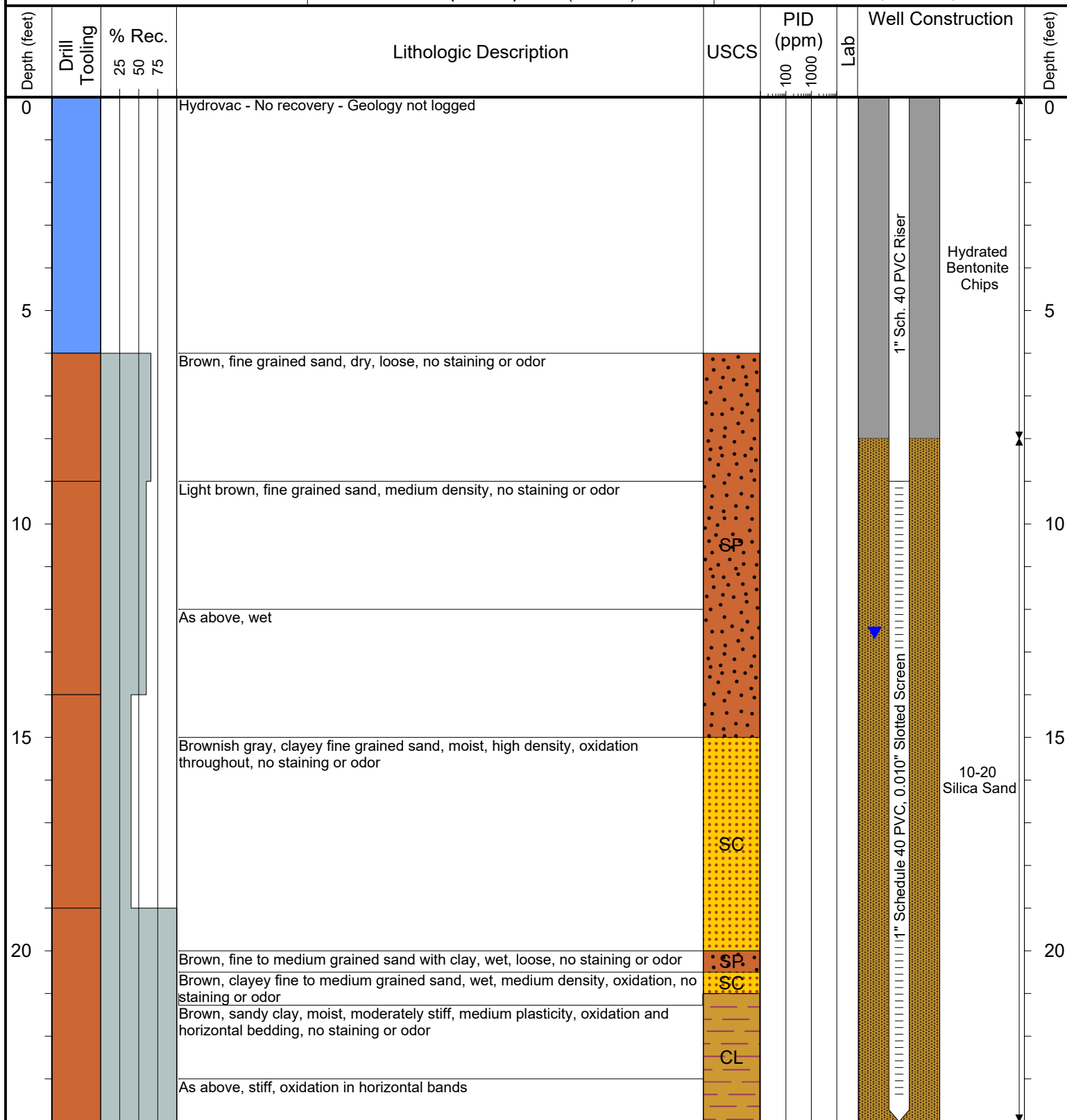
SURFACE COMPLETION: Flush Mount

LATITUDE (WGS 1984): 40.180370567

LONGITUDE (WGS 1984): -104.751462851

CASING ELEVATION (FT. AMSL): 4999.477

GROUND ELEVATION (FT. AMSL): 4999.597



Drilling / Sample Method:

Macro-Core Hydrovac CME - Hollow Stem Auger
Expendable Well Tip Hand Auger

Laboratory Sample Types:

Geotechnical Lab
Analytical Chemistry Lab