



01849833

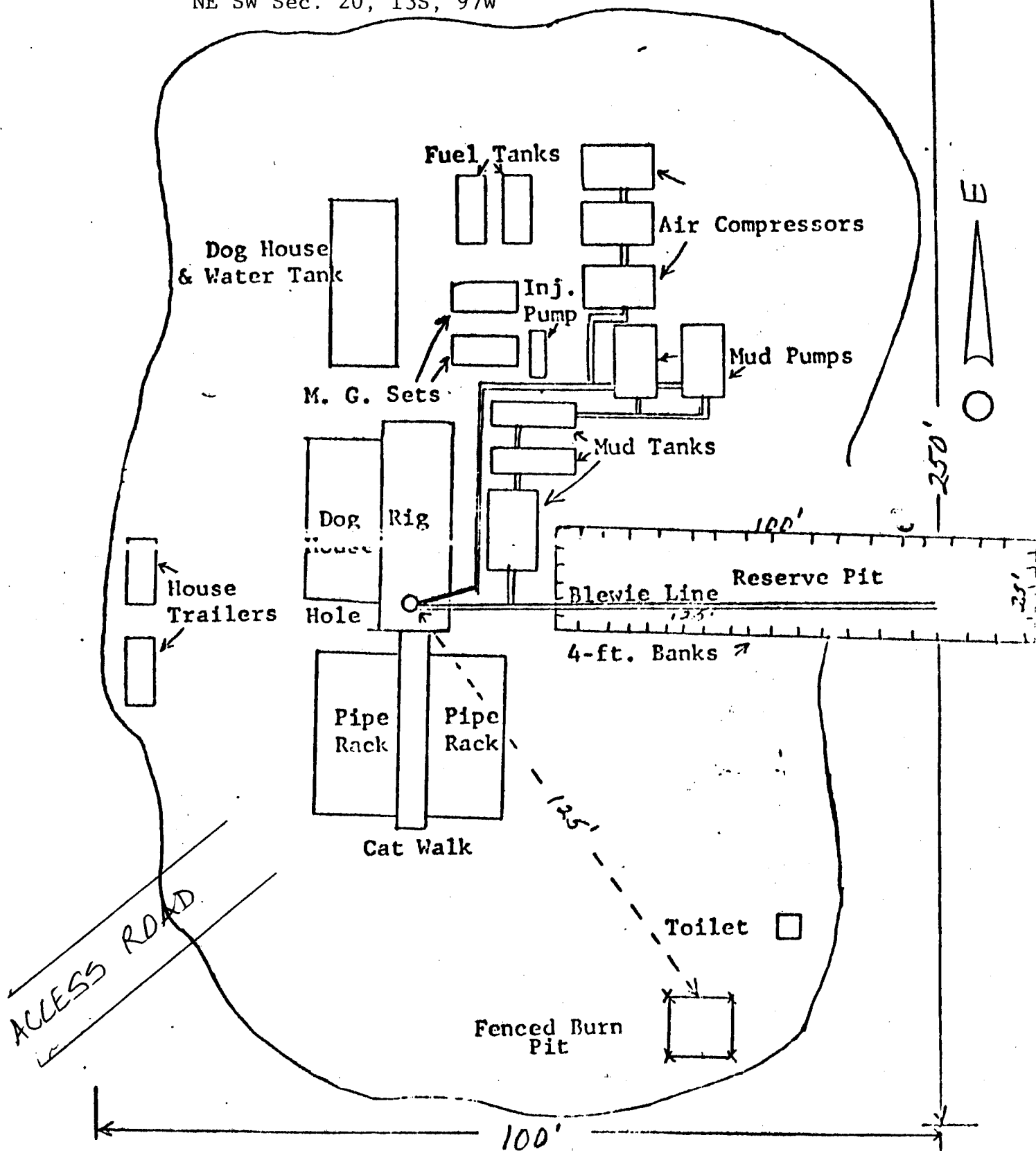
RECEIVED

SEP 14 1979

COLORADO-PACIFIC PETROLEUM CORPORATION

Well Name & Lease No. Kannah Creek Grazing Assoc. #1
NE SW Sec. 20, 13S, 97W

COLO. OIL & GAS CONS. COMM.



Scale: 1 in. = approx. 30 ft.