



# CEMENT BOND LOG

## GAMMA RAY C C L

### V D L

Company Noble Energy INC.

Well OSTER 03-1614

Field Wattenberg

County Weld

State Colorado

Location:

API #: 05123178410000

Other Services

SE SE

SEC 03 TWP 4N RGE 64W

Elevation

Permanent Datum

GL

Elevation

4628

K.B. 4642

Log Measured From

14

D.F. 4641

Drilling Measured From

KB

G.L. 4628

Date January 31, 2012

Run Number One

Depth Driller 6898

Depth Logger 6630

Bottom Logged Interval 6629

Top Log Interval 6100

Casing Size 3.5"

Type Fluid Water

Max. Recorded Temp. Not Recorded

Estimated Cement Top Surface

Time Well Ready AM

Time Logger On Bottom AM

Unit Number 4367

Tool Size / ID Number 1 11/16 Gearhart

Location Platteville, CO

Recorded By K. Monaghan

Witnessed By B. Murray

#### Borehole Record

#### Tubing Record

Run Number	Bit	From	To	Size	Weight	From	To
------------	-----	------	----	------	--------	------	----

#### Casing Record

Surface String

Prot. String

Production String

Liner

Size

Wgt/Ft

Top

Bottom

3 1/2"

Surface

TD

<<< Fold Here >>>



All interpretations are opinions based on inferences from electrical or other measurements and we cannot and do not guarantee the accuracy or correctness of any interpretation, and we shall not, except in the case of gross or willful negligence on our part, be liable or responsible for any loss, costs, damages, or expenses incurred or sustained by anyone resulting from any interpretation made by any of our officers, agents or employees. These interpretations are also subject to our general terms and conditions set out in our current Price Schedule.

### Comments

Thank You For Choosing Superior Well Services!!!

API# 05-123-17841-0000

Correlated to: Atlas Wireline Service's

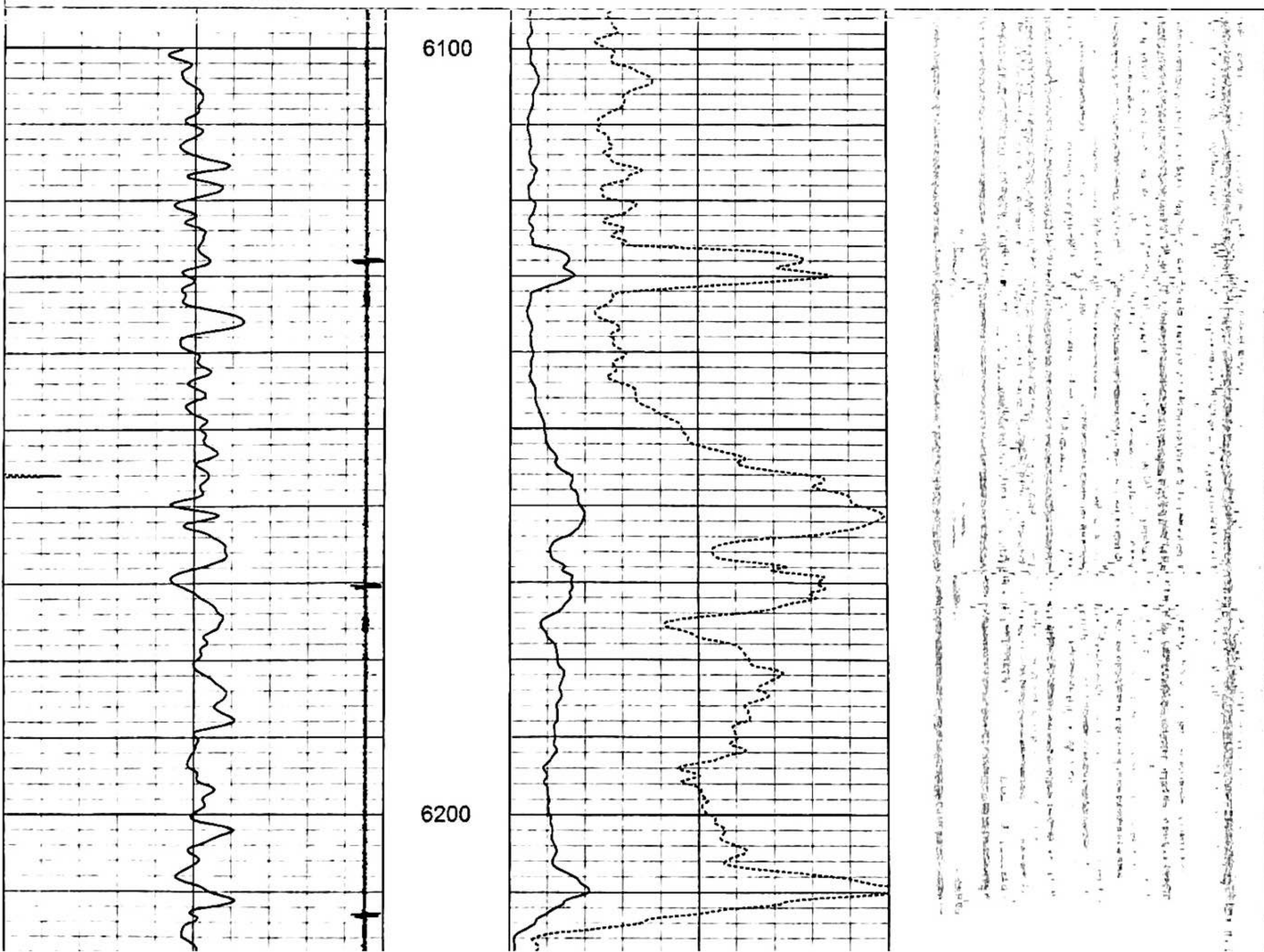
Dated: February 3, 1994

Dual Induction Focused Log

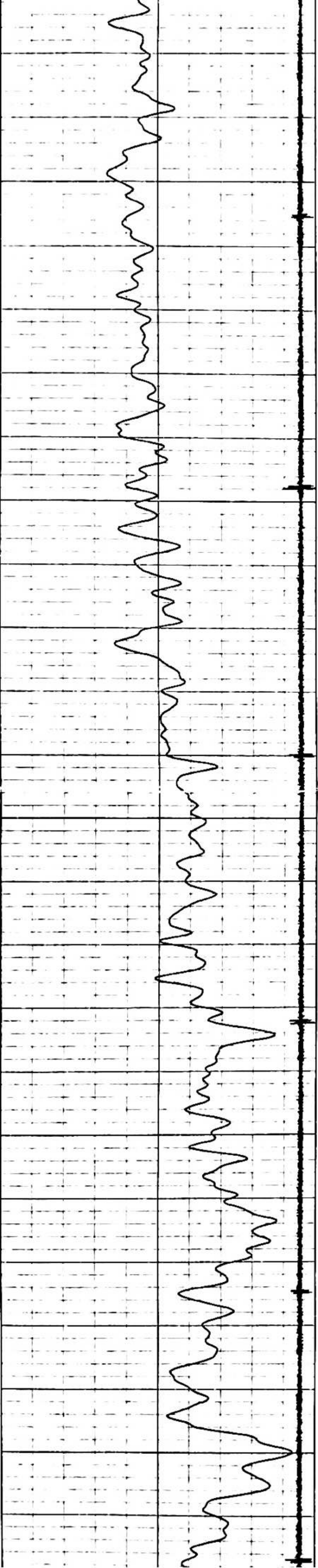
Directions: 57 & 48, N 1/2, W Into

Database File: cbloster 03-16i4.db  
 Dataset Pathname: pass3  
 Presentation Format: nuexbond  
 Dataset Creation: Tue Jan 31 07:44:28 2012 by Log SCH 111116  
 Charted by: Depth in Feet scaled 1:240

0	Gamma Ray (GAPI)	150	0	Amplified Amplitude (mV)	20 200	VDL	1200
30	CCL	-1.5	0	Amplitude (mV)	100		
340	TT3 (usec)	240					







6300

6400

