

Inspection Photos
Operator: Williford Resources
Location/API #: 067-06607
Date: 11-19-2019



Photo 1. View of the project area from the southwestern corner facing center.

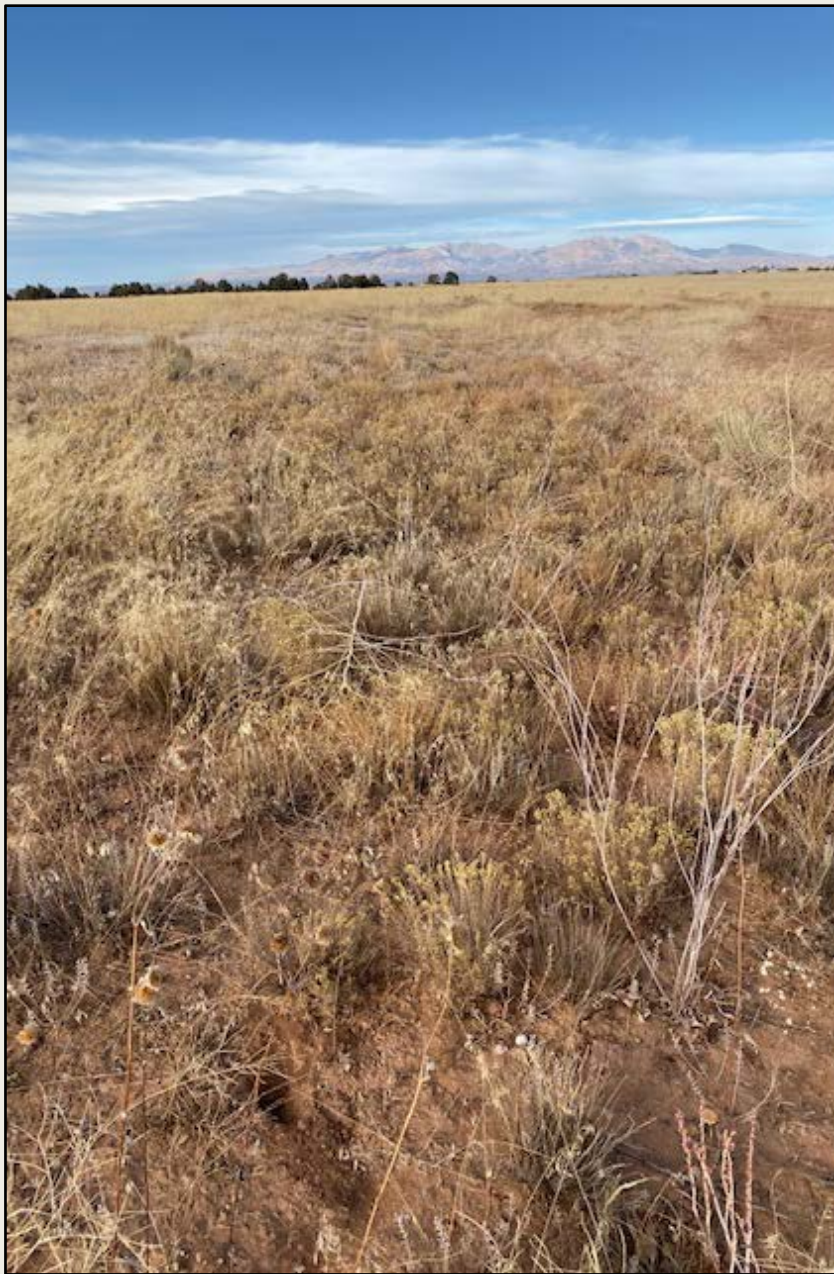


Photo 2. View of the western project area from the southwestern corner facing northward. Vegetation is largely in a dormant condition at this time, but largely comprised of mixed wheatgrasses, snakeweed, sagebrush, and annual weeds.



Photo 3. View of reference area, largely comprised of sagebrush, mixed wheatgrasses, and snakeweed.