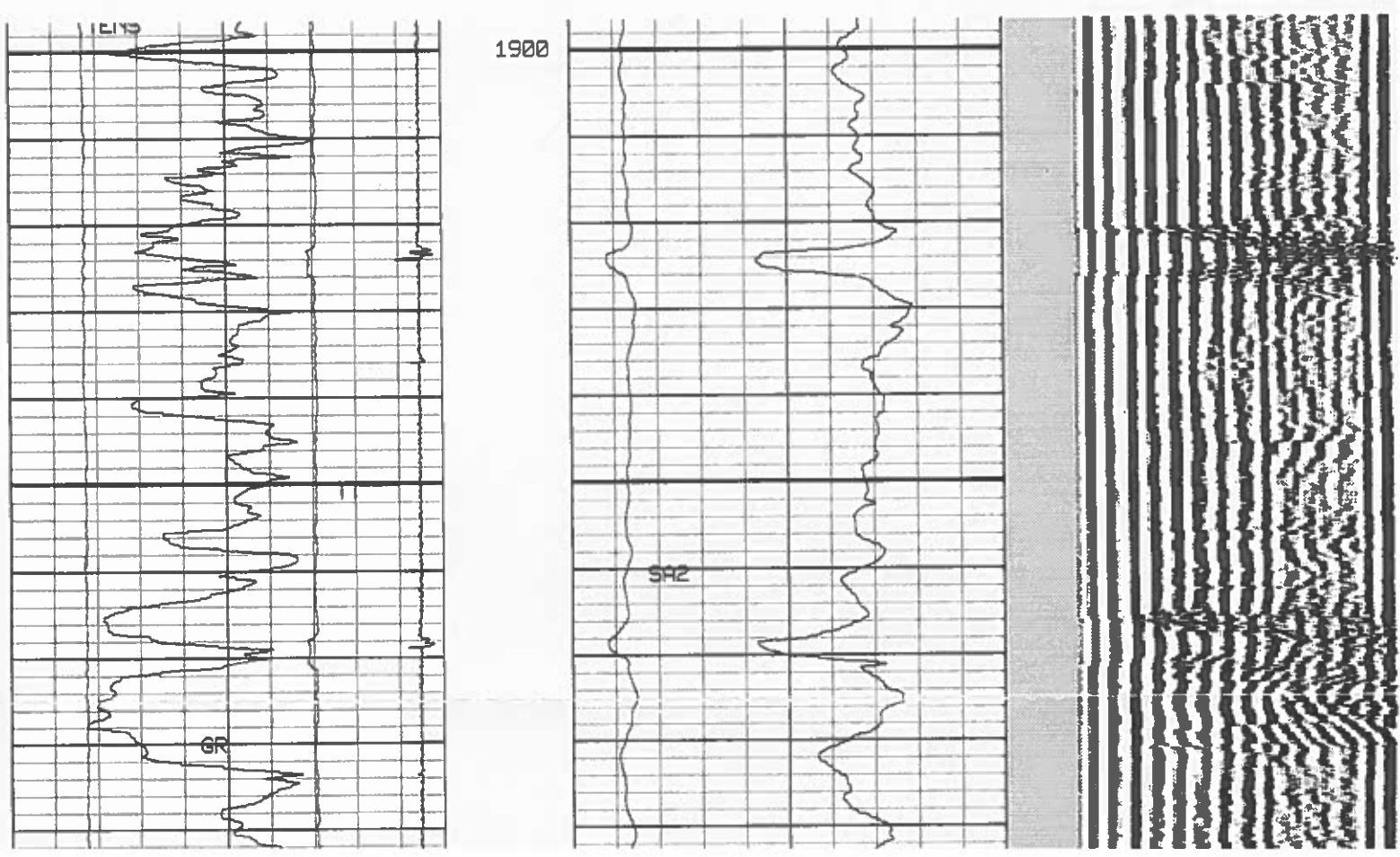
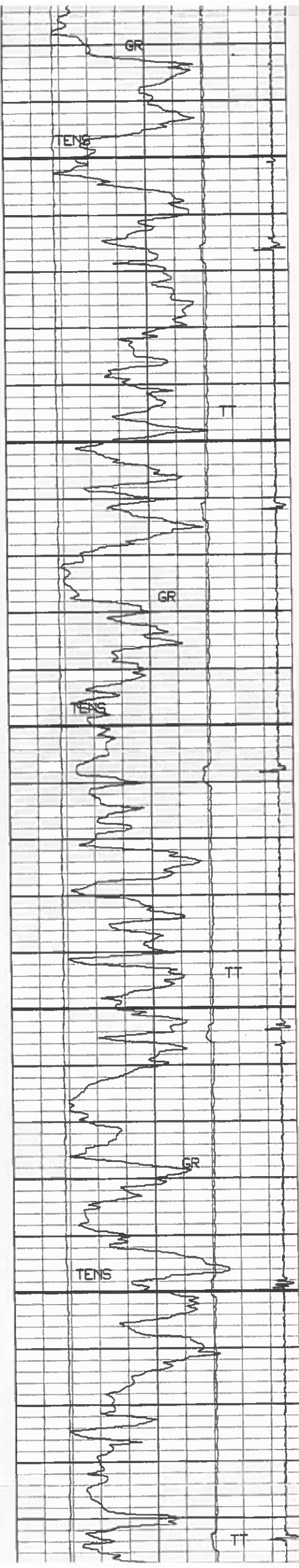


County		COMPANY		Koch	
Field		WELL		HORSE SHOE CANYON 3-28	
Location		FIELD		HORSE SHOE CANYON	
Well		COUNTY		MESA	
Company		STATE		COLORADO	
Permanent Datum		Location		nw/4 of nw/4	
Log Measured From		API Serial No.		1315 FUEL AND 1094 FUEL	
Drilling Measured From		Sect.		28	
Date		Elev.		5400	
Run No.		Casing Fluid		WATER	
Depth-Driller		Fluid Level		FULL	
Depth-Logger		Max. Rec. Temp.		64.55 @ 2380	
Btm. Log Interval		Unit		District	
Top Log Interval		Recorded By		H. ROBERT	
Open Hole Size		Witnessed By		J. WEAVER	
Casing REC.		Size		W/Ft	
Surface String		5 1/2		Grade	
Prot. String		Type Joint		Top	
Prod. String		Bottom		TD	
Liner		PRIMARY CEMENTING DATA		Surface	
STRING		Protection		Production	
Vol. of Cement		Liner		Type of Cement	
Additive		Retarder		Wt. of slurry	
Water loss		Type fluid in csg.		Fluid wt.	

No Scale Changes			
TT2 (US)		Amp. SA2 (MV)	
400	200	0	20
TENS (LB)		SA2 (MV)	
0	3000	0	100
GR (GAPI)		VDL	
0	150	200	120
CCL			
-550	550		

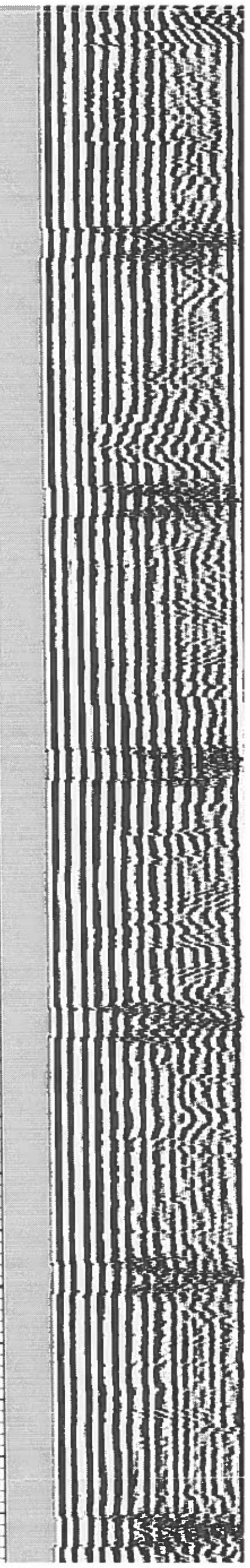
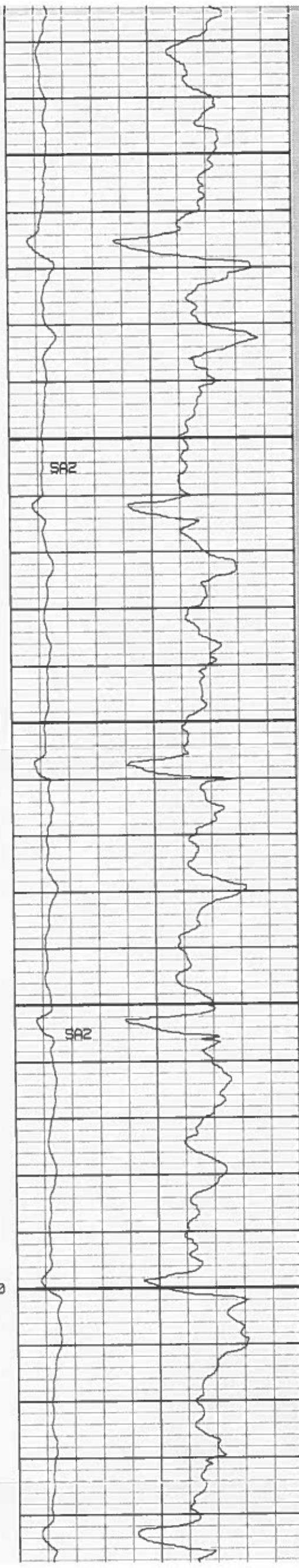


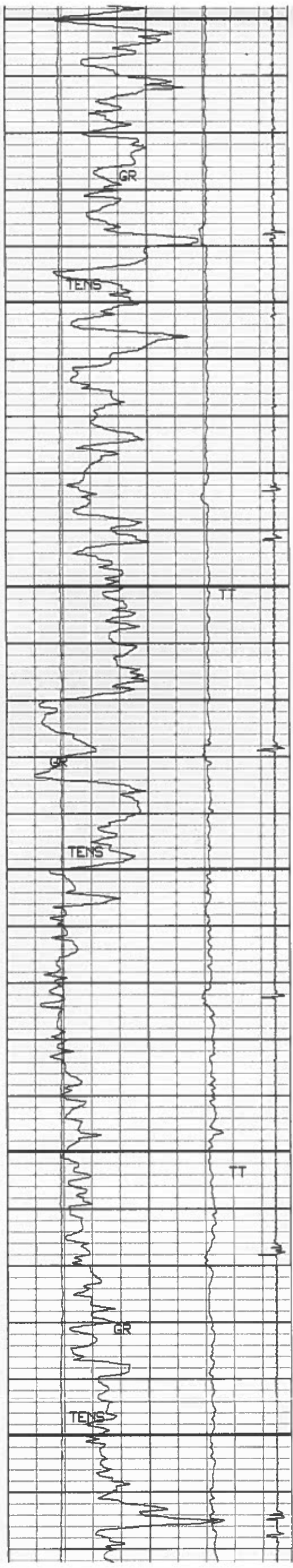


2000

2100

2200

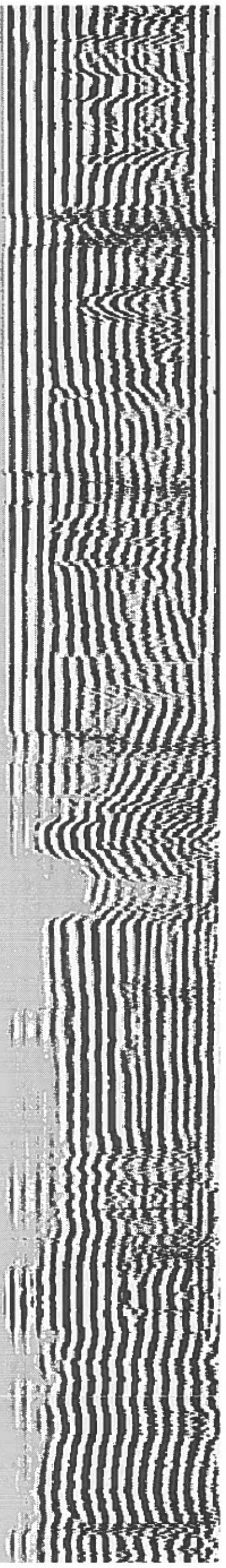
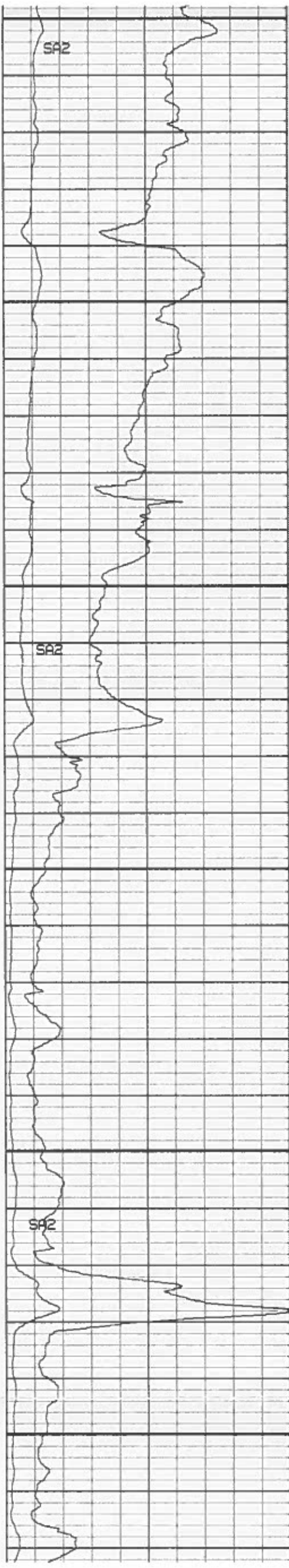


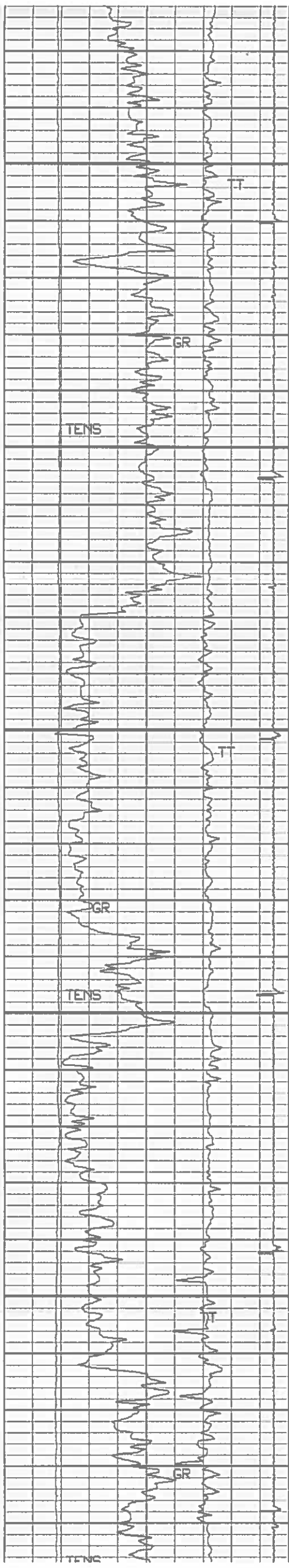


2300

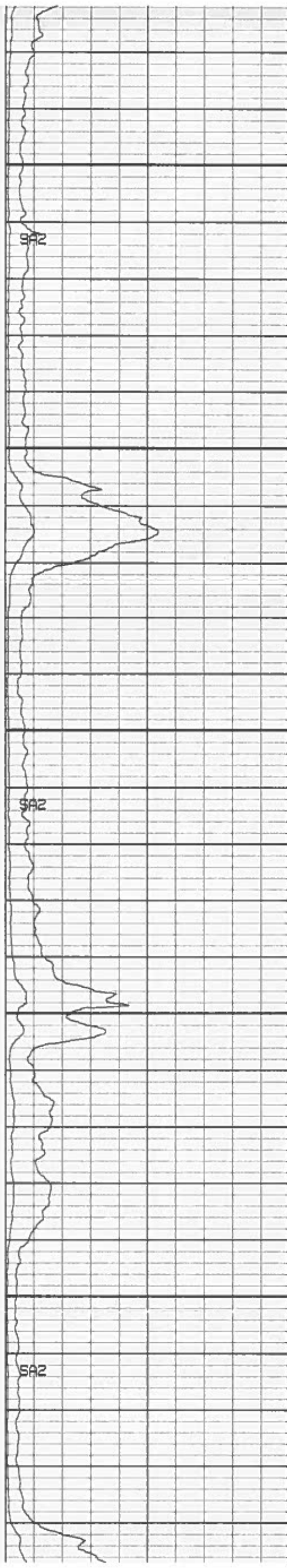
2400

2500

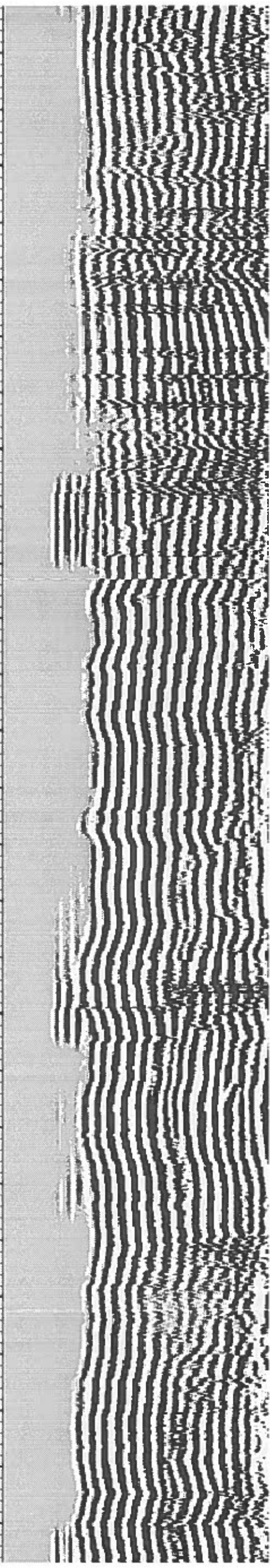


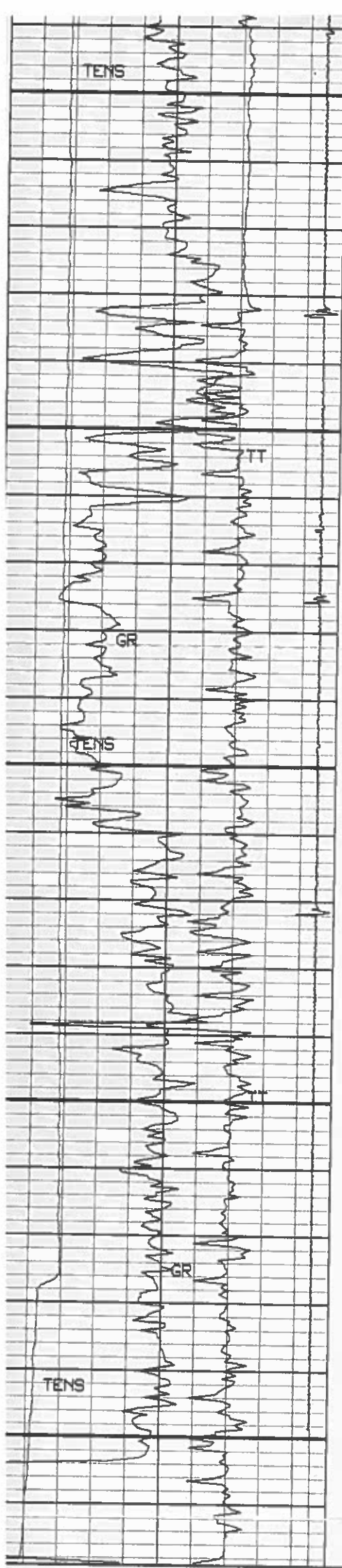


2600



2700

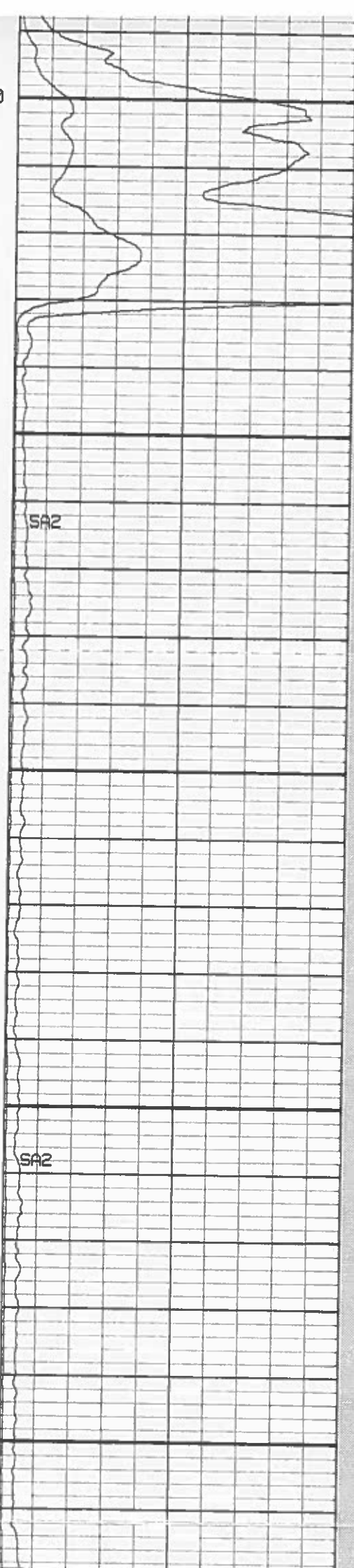




2800

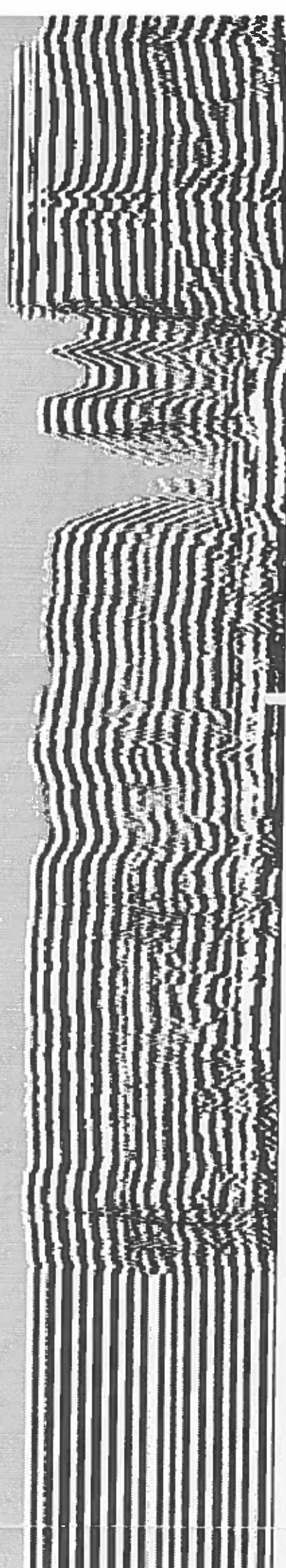
2900

3000



SA2

SA2



400	TT2 (US)	200
0	TENS (LB)	3000
0	GR (GAPI)	150
550	CCL	550

Amp. SA2 (MV)		VDL	
0	20		
SA2 (MV)			
0	100	200	1200

Film Scale 5 in = 100 feet (5 inch)

Sensor Measure Point to Tool Zero

Tension 0.0 feet
SLTJ 3.4 feet
SGT 15.5 feet
CCL-AJ 20.2 feet

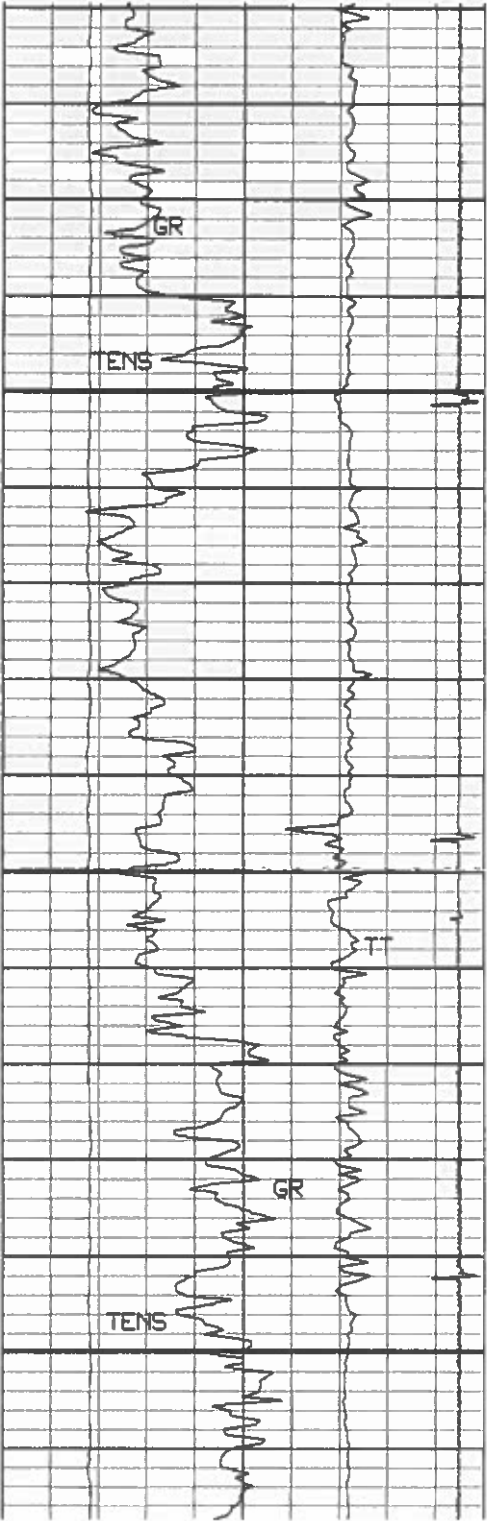
Software Version UX122

Logging Pass Stop Depth 2659.5 feet
Logging Pass Start Depth 2935.7 feet

Job Name 12222222
File Name 02059301

No Scale Changes

TT2 (US)			Amp. SA2 (MV)			
400	200		0	20		
TENS (LB)			SA2 (MV)		VDL	
0	3000		0	100	200	120
GR (GAPI)						
0	150					
CCL						
-550	550					



2700

2800

