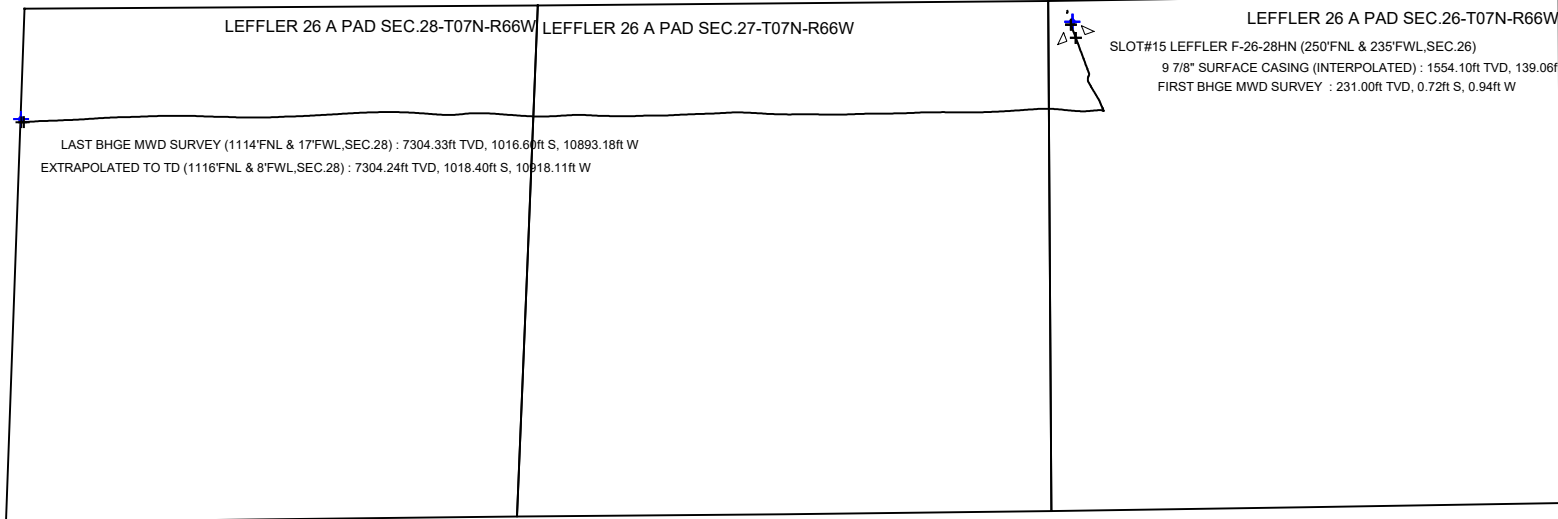


Scale 1 inch = 2000

Easting (ft)  
-11000 -10000 -9000 -8000 -7000 -6000 -5000 -4000 -3000 -2000 -1000 0 1000 2000 3000 4000 5000 6000



0  
-1000  
-2000  
-3000  
-4000  
-5000  
Northing (ft)

Scale 1 inch = 1500

13 7/8" SURFACE CASING (INTERPOLATED) : 13.66° Inc, 1568.00ft MD, 1554.10ft TVD, -38.07ft VS

# BAYSWATER E&P, LLC

Location: COLORADO Slot: SLOT#15 LEFFLER F-26-28HN (250'FNL & 235'FWL, SEC.26)  
Field: WELD COUNTY (NAD83/TRUE NORTH) Well: LEFFLER F-26-28HN  
Facility: SEC.26-T07N-R66W Wellbore: LEFFLER F-26-28HN AWB

## Location Information

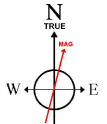
Facility Name		Grid East (US ft)	Grid North (US ft)	Latitude	Longitude	
SEC.26-T07N-R66W		326187.941	1445113.084	40°33'10.156"N	104°45'02.869"W	
Slot	Local N (ft)	Local E (ft)	Grid East (US ft)	Grid North (US ft)	Latitude	Longitude
SLOT#15 LEFFLER F-26-28HN (250'FNL & 235'FWL, SEC.26)	-69.54	-730.30	3207458.109	1445057.381	40°33'09.665"N	104°45'12.330"W
TRUE 38 (4898.0'GL+25'KB@4923.0'RK) to Ground level (At Slot: SLOT#15 LEFFLER F-26-28HN (250'FNL & 235'FWL, SEC.26))						
4923ft						
Mean Sea Level to Ground level (At Slot: SLOT#15 LEFFLER F-26-28HN (250'FNL & 235'FWL, SEC.26))						
0ft						
TRUE 38 (4898.0'GL+25'KB@4923.0'RK) to Mean Sea Level						
4923ft						

## Targets

Name	MD (ft)	TVD (ft)	Local N (ft)	Local E (ft)	Grid East (US ft)	Grid North (US ft)	Latitude	Longitude
LEFFLER 26 A PAD SEC.26-T07N-R66W		0.00	30.24	14.45	3207472.30	1445087.74	40°33'09.965"N	104°45'12.143"W
LEFFLER 26 A PAD SEC.27-T07N-R66W		0.00	30.24	14.45	3207472.30	1445087.74	40°33'09.965"N	104°45'12.143"W
LEFFLER 26 A PAD SEC.28-T07N-R66W		0.00	30.24	14.45	3207472.30	1445087.74	40°33'09.965"N	104°45'12.143"W
LEFFLER F-26-28HN BHL REV-1 (1150'FNL & 9'FWL, SEC.28)		7303.00	-894.89	-10921.89	3196545.24	1443960.61	40°32'59.910"N	104°47'33.814"W
LEFFLER F-26-28HN BHL PLAT (1150'FNL & 9'FWL, SEC.28)		7308.00	-894.89	-10921.89	3196545.24	1443960.61	40°32'59.910"N	104°47'33.814"W
LEFFLER F-26-28HN WAYPOINT #6 REV-1		7313.00	-974.88	-9584.59	3197882.37	1444001.87	40°33'00.014"N	104°47'16.490"W
LEFFLER F-26-28HN WAYPOINT #4 REV-2		7328.00	-950.45	-6384.50	3201082.04	1444053.24	40°33'00.266"N	104°46'35.026"W
LEFFLER F-26-28HN WAYPOINT #5 REV-2		7328.00	-956.70	-7234.65	3200231.99	1444039.84	40°33'00.202"N	104°46'46.049"W
LEFFLER F-26-28HN WAYPOINT #3 REV-2		7333.00	-937.67	-4734.61	3202731.71	1444079.91	40°33'00.396"N	104°46'13.663"W
LEFFLER F-26-28HN WAYPOINT #2 REV-1		7343.00	-926.26	-3234.78	3204231.34	1444103.95	40°33'00.511"N	104°45'54.234"W
LEFFLER F-26-28HN WAYPOINT #1 REV-1		7353.00	-919.80	-2384.68	3205681.33	1444117.57	40°33'00.576"N	104°45'43.222"W
LEFFLER F-26-28HN LP PLAT (1150'FNL & 9'FWL, SEC.27)		7363.00	-903.52	-234.83	3207230.90	1444151.95	40°33'00.738"N	104°45'15.372"W

Plot reference wellpath is LEFFLER F-26-28HN AWP  
Grid System: NAD83 / Lambert Colorado SP, Northern Zone (501), US feet  
True vertical depths are referenced to TRUE 38 (4898.0'GL+25'KB@4923.0'RK) (RKB)  
North Reference: True north  
Measured depths are referenced to TRUE 38 (4898.0'GL+25'KB@4923.0'RK) (RKB)  
Scale: True distance  
TRUE 38 (4898.0'GL+25'KB@4923.0'RK) (RKB) to Mean Sea Level: 4923 feet  
Depths are in feet  
Mean Sea Level to Ground level (At Slot: SLOT#15 LEFFLER F-26-28HN (250'FNL & 235'FWL, SEC.26)): 0 feet  
Created by: manojh on 2019-09-17  
Coordinates are in feet referenced to Slot  
Database: WA DENVER

True Vertical Depth (ft)  
1500  
2250  
3000  
3750  
4500  
5250  
6000  
6750  
7500



BGCM (1900.0 to 2020.0) Dip: 66.89° Field: 52284.8 nT  
Magnetic North is 8.19 degrees East of True North (at 6/6/2019)

To correct azimuth from Magnetic to True add 8.19 degrees

EXTRAPOLATED TO TD (1116'FNL & 8'FWL, SEC.28) : 90.22° Inc, 18493.00ft MD, 7304.24ft TVD, 10965.45ft VS  
LAST BHGE MWD SURVEY (1114'FNL & 17'FWL, SEC.28) : 90.22° Inc, 18468.00ft MD, 7304.33ft TVD, 10940.46ft VS

Vertical Section (ft)  
Azimuth 264.85° with reference 0.00 N, 0.00 E

Scale 1 inch = 1500

0 750 1500 2250 3000 3750 4500 5250 6000 6750 7500 8250 9000 9750 10500 11250

REFERENCE WELLPATH IDENTIFICATION			
Operator	BAYSWATER E&P, LLC	Slot	SLOT#15 LEFFLER F-26-28HN (250'FNL & 235'FWL, SEC.26)
Area	COLORADO	Well	LEFFLER F-26-28HN
Field	WELD COUNTY (NAD83/TRUE NORTH)	Wellbore	LEFFLER F-26-28HN AWB
Facility	SEC.26-T07N-R66W		

REPORT SETUP INFORMATION			
Projection System	NAD83 / Lambert Colorado SP, Northern Zone (501), US feet	Software System	WellArchitect® 5.1
North Reference	True	User	Manajohj
Scale	0.999971	Report Generated	9/17/2019 at 10:24:03 AM
Convergence at slot	0.48° East	Database/Source file	WA DENVER/LEFFLER_F-26-28HN_AWP.xml

WELLPATH LOCATION						
	Local coordinates		Grid coordinates		Geographic coordinates	
	North[ft]	East[ft]	Easting[US ft]	Northing[US ft]	Latitude	Longitude
Slot Location	-49.54	-730.30	3207458.11	1445057.38	40°33'09.666"N	104°45'12.330"W
Facility Reference Pt			3208187.94	1445113.08	40°33'10.156"N	104°45'02.869"W
Field Reference Pt			3174587.00	1430859.71	40°30'51.890"N	104°52'19.470"W

WELLPATH DATUM			
Calculation method	Minimum curvature	TRUE 38 (4898.0'GL+25'KB@4923.0'RKB) (RKB) to Facility Vertical Datum	4923.00ft
Horizontal Reference Pt	Slot	TRUE 38 (4898.0'GL+25'KB@4923.0'RKB) (RKB) to Mean Sea Level	4923.00ft
Vertical Reference Pt	TRUE 38 (4898.0'GL+25'KB@4923.0'RKB) (RKB)	TRUE 38 (4898.0'GL+25'KB@4923.0'RKB) (RKB) to Ground Level at Slot (SLOT#15 LEFFLER F-26-28HN (250'FNL & 235'FWL, SEC.26))	4923.00ft
MD Reference Pt	TRUE 38 (4898.0'GL+25'KB@4923.0'RKB) (RKB)	Section Origin	N 0.00, E 0.00 ft
Field Vertical Reference	Mean Sea Level	Section Azimuth	264.85°

REFERENCE WELLPATH IDENTIFICATION				
Operator	BAYSWATER E&P, LLC		Slot	SLOT#15 LEFFLER F-26-28HN (250'FNL & 235'FWL,SEC.26)
Area	COLORADO		Well	LEFFLER F-26-28HN
Field	WELD COUNTY (NAD83/TRUE NORTH)		Wellbore	LEFFLER F-26-28HN AWB
Facility	SEC.26-T07N-R66W			

WELLPATH DATA (199 stations) † = interpolated/extrapolated station														
MD [ft]	Inclination [°]	Azimuth [°]	TVD [ft]	TVDSS [ft]	Vert Sect [ft]	North [ft]	East [ft]	Latitude	Longitude	DLS [°/100ft]	Tooface [°]	Build Rate [°/100ft]	Turn Rate [°/100ft]	Comments
0.00†	0.000	232.630	0.00	-4923.00	0.00	0.00	0.00	40°33'09.666"N	104°45'12.330"W	0.00	0.00	0.00	0.00	KB
25.00	0.000	232.630	25.00	-4898.00	0.00	0.00	0.00	40°33'09.666"N	104°45'12.330"W	0.00	-127.37	0.00	0.00	GL
231.00	0.660	232.630	231.00	-4692.00	1.00	-0.72	-0.94	40°33'09.659"N	104°45'12.342"W	0.32	49.14	0.32	-61.83	FIRST BHGE MWD SURVEY
325.00	0.720	237.880	324.99	-4598.01	1.99	-1.36	-1.87	40°33'09.653"N	104°45'12.354"W	0.09	179.49	0.06	5.59	
419.00	0.030	45.090	418.99	-4504.01	2.50	-1.66	-2.36	40°33'09.650"N	104°45'12.361"W	0.80	82.72	-0.73	177.88	
514.00	0.190	118.800	513.99	-4409.01	2.35	-1.72	-2.20	40°33'09.649"N	104°45'12.359"W	0.19	52.80	0.17	77.59	
609.00	0.880	161.700	608.98	-4314.02	2.05	-2.49	-1.83	40°33'09.641"N	104°45'12.354"W	0.79	-6.37	0.73	45.16	
703.00	2.050	158.060	702.95	-4220.05	1.40	-4.73	-0.98	40°33'09.619"N	104°45'12.343"W	1.25	6.61	1.24	-3.87	
798.00	3.460	160.760	797.84	-4125.16	0.21	-9.01	0.60	40°33'09.577"N	104°45'12.322"W	1.49	1.61	1.48	2.84	
893.00	6.060	161.450	892.50	-4030.50	-1.65	-16.48	3.14	40°33'09.503"N	104°45'12.289"W	2.74	-13.72	2.74	0.73	
987.00	8.250	157.750	985.76	-3937.24	-4.78	-27.42	7.27	40°33'09.395"N	104°45'12.236"W	2.38	13.10	2.33	-3.94	
1082.00	10.760	160.860	1079.45	-3843.55	-8.93	-42.11	12.76	40°33'09.250"N	104°45'12.165"W	2.70	-75.55	2.64	3.27	
1177.00	11.070	155.530	1172.74	-3750.26	-14.09	-58.79	19.45	40°33'09.085"N	104°45'12.078"W	1.11	17.03	0.33	-5.61	
1271.00	12.870	157.990	1264.69	-3658.31	-20.11	-76.71	27.11	40°33'08.908"N	104°45'11.979"W	1.99	160.09	1.91	2.62	
1365.00	12.380	158.820	1356.42	-3566.58	-25.93	-95.81	34.68	40°33'08.719"N	104°45'11.881"W	0.56	19.44	-0.52	0.88	
1460.00	13.240	160.140	1449.05	-3473.95	-31.50	-115.54	42.05	40°33'08.524"N	104°45'11.785"W	0.96	-45.98	0.91	1.39	
1512.00	13.400	159.430	1499.65	-3423.35	-34.62	-126.78	46.19	40°33'08.413"N	104°45'11.732"W	0.44	13.75	0.31	-1.37	
1568.00†	13.663	159.702	1554.10	-3368.90	-38.07	-139.06	50.76	40°33'08.292"N	104°45'11.672"W	0.48	13.48	0.47	0.49	9 7/8" SURFACE CASING (INTERPOLATED)
1593.00	13.780	159.820	1578.38	-3344.62	-39.61	-144.63	52.82	40°33'08.237"N	104°45'11.646"W	0.48	166.08	0.47	0.47	
1688.00	13.470	160.150	1670.71	-3252.29	-45.35	-165.65	60.48	40°33'08.029"N	104°45'11.547"W	0.34	-116.75	-0.33	0.35	
1783.00	13.360	159.190	1763.12	-3159.88	-51.12	-186.32	68.13	40°33'07.825"N	104°45'11.447"W	0.26	167.09	-0.12	-1.01	
1878.00	13.250	159.300	1855.57	-3067.43	-57.00	-206.76	75.88	40°33'07.623"N	104°45'11.347"W	0.12	171.46	-0.12	0.12	
1972.00	12.420	159.880	1947.22	-2975.78	-62.50	-226.33	83.17	40°33'07.430"N	104°45'11.253"W	0.89	20.35	-0.88	0.62	
2067.00	15.090	163.640	2039.49	-2883.51	-67.55	-247.80	90.16	40°33'07.217"N	104°45'11.162"W	2.96	-120.11	2.81	3.96	
2162.00	14.030	154.980	2131.45	-2791.55	-73.86	-270.10	98.52	40°33'06.997"N	104°45'11.054"W	2.55	54.12	-1.12	-9.12	
2256.00	14.610	158.050	2222.53	-2700.47	-81.16	-291.42	107.77	40°33'06.786"N	104°45'10.934"W	1.02	120.27	0.62	3.27	
2350.00	14.230	160.810	2313.57	-2609.43	-87.39	-313.33	116.00	40°33'06.570"N	104°45'10.827"W	0.84	-144.43	-0.40	2.94	
2444.00	13.880	159.760	2404.75	-2518.25	-93.13	-334.82	123.70	40°33'06.358"N	104°45'10.728"W	0.46	-178.27	-0.37	-1.12	
2538.00	13.570	159.720	2496.07	-2426.93	-98.94	-355.74	131.42	40°33'06.151"N	104°45'10.628"W	0.33	-64.27	-0.33	-0.04	
2632.00	13.860	157.310	2587.39	-2335.61	-105.21	-376.47	139.59	40°33'05.946"N	104°45'10.522"W	0.68	119.76	0.31	-2.56	
2727.00	12.960	165.300	2679.81	-2243.19	-110.41	-397.28	146.68	40°33'05.740"N	104°45'10.430"W	2.17	-45.73	-0.95	8.41	
2822.00	14.800	158.320	2772.04	-2150.96	-115.63	-418.86	153.87	40°33'05.527"N	104°45'10.337"W	2.62	179.80	1.94	-7.35	
2917.00	14.110	158.330	2864.03	-2058.97	-122.37	-440.90	162.62	40°33'05.309"N	104°45'10.223"W	0.73	122.04	-0.73	0.01	
3011.00	13.980	159.200	2955.22	-1967.78	-128.69	-462.16	170.89	40°33'05.099"N	104°45'10.116"W	0.26	-39.40	-0.14	0.93	
3106.00	14.060	158.930	3047.39	-1875.61	-134.95	-483.65	179.11	40°33'04.887"N	104°45'10.010"W	0.11	149.44	0.08	-0.28	
3200.00	12.760	162.470	3138.82	-1784.18	-140.31	-504.21	186.34	40°33'04.684"N	104°45'09.916"W	1.64	130.16	-1.38	3.77	
3295.00	9.980	190.050	3232.02	-1690.98	-140.40	-522.34	188.07	40°33'04.505"N	104°45'09.894"W	6.34	59.19	-2.93	29.03	
3390.00	12.520	206.180	3325.21	-1597.79	-132.88	-539.69	182.09	40°33'04.333"N	104°45'09.971"W	4.23	-82.96	2.67	16.98	
3484.00	13.380	191.240	3416.84	-1506.16	-124.51	-559.51	175.47	40°33'04.137"N	104°45'10.057"W	3.67	-98.09	0.91	-15.89	
3579.00	13.710	167.680	3509.27	-1413.73	-122.81	-581.30	175.73	40°33'03.922"N	104°45'10.054"W	5.78	-88.20	0.35	-24.80	
3673.00	14.390	151.400	3600.49	-1322.51	-128.85	-602.45	183.70	40°33'03.713"N	104°45'09.950"W	4.25	-54.15	0.72	-17.32	
3767.00	14.650	150.000	3691.49	-1231.51	-138.49	-623.00	195.23	40°33'03.510"N	104°45'09.801"W	0.46	-64.45	0.28	-1.49	
3861.00	14.710	149.510	3782.42	-1140.58	-148.60	-643.58	207.23	40°33'03.307"N	104°45'09.645"W	0.15	10.69	0.06	-0.52	
3956.00	14.970	149.700	3874.25	-1048.75	-158.97	-664.56	219.54	40°33'03.099"N	104°45'09.486"W	0.28	-47.63	0.27	0.20	
4050.00	15.070	149.280	3965.04	-957.96	-169.40	-685.55	231.91	40°33'02.892"N	104°45'09.326"W	0.16	1.63	0.11	-0.45	

REFERENCE WELLPATH IDENTIFICATION			
Operator	BAYSWATER E&P, LLC	Slot	SLOT#15 LEFFLER F-26-28HN (250'FNL & 235'FWL,SEC.26)
Area	COLORADO	Well	LEFFLER F-26-28HN
Field	WELD COUNTY (NAD83/TRUE NORTH)	Wellbore	LEFFLER F-26-28HN AWB
Facility	SEC.26-T07N-R66W		

WELLPATH DATA (199 stations)															
MD [ft]	Inclination [°]	Azimuth [°]	TVD [ft]	TVSS [ft]	Vert Sect [ft]	North [ft]	East [ft]	Latitude	Longitude	DLS [°/100ft]	Tooface [°]	Build Rate [°/100ft]	Turn Rate [°/100ft]	Comments	
4145.00	15.350	149.310	4056.71	-866.29	-180.15	-706.98	244.64	40°33'02.680"N	104°45'09.161"W	0.29	-165.40	0.29	0.03		
4240.00	14.830	148.780	4148.44	-774.56	-190.92	-728.19	257.36	40°33'02.470"N	104°45'08.996"W	0.57	80.84	-0.55	-0.56		
4335.00	14.880	149.920	4240.26	-682.74	-201.40	-749.14	269.77	40°33'02.263"N	104°45'08.835"W	0.31	-149.52	0.05	1.20		
4429.00	13.320	145.850	4331.43	-591.57	-211.74	-768.55	281.90	40°33'02.072"N	104°45'08.678"W	1.97	109.83	-1.66	-4.33		
4523.00	12.700	156.280	4423.03	-499.97	-220.28	-786.98	292.14	40°33'01.890"N	104°45'08.546"W	2.58	97.70	-0.66	11.10		
4618.00	12.660	157.770	4515.71	-407.29	-226.66	-806.17	300.28	40°33'01.700"N	104°45'08.440"W	0.35	-12.38	-0.04	1.57		
4713.00	13.030	157.410	4608.34	-314.66	-232.93	-825.70	308.33	40°33'01.507"N	104°45'08.336"W	0.40	-160.12	0.39	-0.38		
4807.00	12.220	156.020	4700.06	-222.94	-239.31	-844.57	316.44	40°33'01.320"N	104°45'08.231"W	0.92	-176.86	-0.86	-1.48		
4902.00	10.380	155.460	4793.22	-129.78	-245.40	-861.54	324.09	40°33'01.153"N	104°45'08.132"W	1.94	-178.32	-1.94	-0.59		
4997.00	1.850	147.680	4887.59	-35.41	-248.95	-870.64	328.47	40°33'01.063"N	104°45'08.075"W	9.00	16.54	-8.98	-8.19		
5091.00	3.980	156.620	4981.46	58.46	-250.66	-874.92	330.57	40°33'01.021"N	104°45'08.048"W	2.31	156.59	2.27	9.51		
5186.00	3.310	161.750	5076.27	153.27	-252.31	-880.55	332.74	40°33'00.965"N	104°45'08.020"W	0.78	164.78	-0.71	5.40		
5280.00	3.170	162.440	5170.12	247.12	-253.49	-885.60	334.38	40°33'00.915"N	104°45'07.998"W	0.15	-82.60	-0.15	0.73		
5375.00	3.270	153.850	5264.97	341.97	-255.02	-890.54	336.36	40°33'00.866"N	104°45'07.973"W	0.52	105.85	0.11	-9.04		
5470.00	3.170	162.600	5359.82	436.82	-256.55	-895.48	338.34	40°33'00.817"N	104°45'07.947"W	0.53	-170.12	-0.11	9.21		
5565.00	2.680	160.770	5454.70	531.70	-257.65	-900.08	339.86	40°33'00.772"N	104°45'07.927"W	0.53	179.45	-0.52	-1.93		
5659.00	0.770	338.300	5548.67	625.67	-258.00	-901.57	340.35	40°33'00.757"N	104°45'07.921"W	3.67	-177.84	-2.03	188.86		
5754.00	0.520	337.260	5643.67	720.67	-257.69	-900.58	339.95	40°33'00.767"N	104°45'07.926"W	0.26	-103.93	-0.26	-1.09		
5848.00	0.520	309.400	5737.66	814.66	-257.26	-899.92	339.45	40°33'00.774"N	104°45'07.933"W	0.27	101.26	0.00	-29.64		
5943.00	0.700	3.900	5832.66	909.66	-257.04	-899.06	339.16	40°33'00.782"N	104°45'07.936"W	0.61	-149.62	0.19	57.37		
6037.00	0.730	243.290	5926.65	1003.65	-256.57	-898.76	338.66	40°33'00.785"N	104°45'07.943"W	1.32	179.98	0.03	-128.31		
6131.00	0.090	63.120	6020.65	1097.65	-256.09	-899.00	338.19	40°33'00.783"N	104°45'07.949"W	0.87	-143.21	-0.68	191.31		
6226.00	0.140	302.560	6115.65	1192.65	-256.06	-898.90	338.16	40°33'00.784"N	104°45'07.949"W	0.21	176.28	0.05	-126.91		
6320.00	0.120	114.500	6209.65	1286.65	-256.06	-898.88	338.15	40°33'00.784"N	104°45'07.949"W	0.28	-173.00	-0.02	182.91		
6414.00	0.040	322.940	6303.65	1380.65	-256.13	-898.89	338.22	40°33'00.784"N	104°45'07.949"W	0.17	157.46	-0.09	-161.23		
6508.00	0.440	118.400	6397.65	1474.65	-256.41	-899.04	338.52	40°33'00.782"N	104°45'07.945"W	0.51	147.12	0.43	165.38		
6603.00	0.240	181.150	6492.65	1569.65	-256.69	-899.41	338.84	40°33'00.779"N	104°45'07.941"W	0.41	179.95	-0.21	66.05		
6697.00	0.110	0.990	6586.65	1663.65	-256.68	-899.52	338.84	40°33'00.777"N	104°45'07.941"W	0.37	-97.79	-0.14	191.32		
6792.00	0.150	309.800	6681.65	1758.65	-256.60	-899.35	338.74	40°33'00.779"N	104°45'07.942"W	0.12	42.73	0.04	-53.88		
6886.00	0.470	340.020	6775.65	1852.65	-256.42	-898.91	338.52	40°33'00.784"N	104°45'07.945"W	0.37	-51.21	0.34	32.15		
6981.00	7.770	291.500	6870.34	1947.34	-250.57	-896.18	332.40	40°33'00.810"N	104°45'08.024"W	7.86	-29.16	7.68	-51.07		
7075.00	16.870	275.140	6962.11	2039.11	-231.42	-892.62	312.86	40°33'00.846"N	104°45'08.277"W	10.28	-22.48	9.68	-17.40		
7170.00	26.270	266.610	7050.38	2127.38	-196.76	-892.63	278.05	40°33'00.846"N	104°45'08.728"W	10.41	-9.07	9.89	-8.98		
7265.00	36.390	263.910	7131.42	2208.42	-147.44	-896.88	228.92	40°33'00.804"N	104°45'09.365"W	10.75	6.91	10.65	-2.84		
7360.00	46.590	265.600	7202.49	2279.49	-84.59	-902.53	166.32	40°33'00.748"N	104°45'10.175"W	10.80	34.89	10.74	1.78		
7455.00	56.350	273.500	7261.66	2338.66	-10.75	-902.76	92.20	40°33'00.745"N	104°45'11.136"W	12.15	6.09	10.27	8.32		
7549.00	67.810	274.810	7305.60	2382.60	71.07	-896.70	9.50	40°33'00.805"N	104°45'12.207"W	12.25	6.30	12.19	1.39		
7643.00	77.690	275.920	7333.44	2410.44	159.22	-888.30	-79.76	40°33'00.888"N	104°45'13.363"W	10.57	-9.92	10.51	1.18		
7738.00	86.520	274.380	7346.48	2423.48	251.71	-879.87	-173.39	40°33'00.972"N	104°45'14.576"W	9.43	-61.23	9.29	-1.62		
7833.00	89.420	269.120	7349.84	2426.84	345.92	-876.98	-268.24	40°33'01.000"N	104°45'15.805"W	6.32	-88.83	3.05	-5.54		
7928.00	89.480	266.220	7350.75	2427.75	440.79	-880.84	-363.15	40°33'00.962"N	104°45'17.034"W	3.05	-90.00	0.06	-3.05		
8022.00	89.480	266.150	7351.61	2428.61	534.76	-887.09	-456.93	40°33'00.900"N	104°45'18.249"W	0.07	-82.24	0.00	-0.07		
8116.00	89.540	265.710	7352.41	2429.41	628.74	-893.77	-550.69	40°33'00.834"N	104°45'19.464"W	0.47	93.37	0.06	-0.47		
8211.00	89.510	266.220	7353.20	2430.20	723.72	-900.45	-645.45	40°33'00.768"N	104°45'20.691"W	0.54	91.40	-0.03	0.54		
8305.00	89.480	267.450	7354.03	2431.03	817.65	-905.64	-739.31	40°33'00.717"N	104°45'21.907"W	1.31	-90.00	-0.03	1.31		

REFERENCE WELLPATH IDENTIFICATION			
Operator	BAYSWATER E&P, LLC	Slot	SLOT#15 LEFFLER F-26-28HN (250'FNL & 235'FWL,SEC.26)
Area	COLORADO	Well	LEFFLER F-26-28HN
Field	WELD COUNTY (NAD83/TRUE NORTH)	Wellbore	LEFFLER F-26-28HN AWB
Facility	SEC.26-T07N-R66W		

WELLPATH DATA (199 stations)														
MD [ft]	Inclination [°]	Azimuth [°]	TVD [ft]	TVDSS [ft]	Vert Sect [ft]	North [ft]	East [ft]	Latitude	Longitude	DLS [°/100ft]	Tooface [°]	Build Rate [°/100ft]	Turn Rate [°/100ft]	Comments
8399.00	89.480	267.190	7354.88	2431.88	911.56	-910.04	-833.20	40°33'00.673"N	104°45'23.123"W	0.28	72.40	0.00	-0.28	
8494.00	89.940	268.640	7355.36	2432.36	1006.42	-913.49	-928.13	40°33'00.639"N	104°45'24.353"W	1.60	84.09	0.48	1.53	
8588.00	90.120	270.380	7355.31	2432.31	1100.11	-914.30	-1022.12	40°33'00.631"N	104°45'25.571"W	1.86	-151.93	0.19	1.85	
8683.00	89.820	270.220	7355.36	2432.36	1194.68	-913.80	-1117.12	40°33'00.636"N	104°45'26.801"W	0.36	9.29	-0.32	-0.17	
8778.00	90.370	270.310	7355.20	2432.20	1289.25	-913.36	-1212.12	40°33'00.640"N	104°45'28.032"W	0.59	-139.09	0.58	0.09	
8873.00	90.220	270.180	7354.72	2431.72	1383.83	-912.95	-1307.12	40°33'00.644"N	104°45'29.263"W	0.21	-101.04	-0.16	-0.14	
8968.00	90.060	269.360	7354.48	2431.48	1478.48	-913.33	-1402.12	40°33'00.641"N	104°45'30.493"W	0.88	-14.04	-0.17	-0.86	
9063.00	90.180	269.330	7354.28	2431.28	1573.19	-914.42	-1497.11	40°33'00.630"N	104°45'31.724"W	0.13	-92.29	0.13	-0.03	
9157.00	90.090	267.080	7354.06	2431.06	1667.02	-917.36	-1591.06	40°33'00.601"N	104°45'32.941"W	2.40	115.51	-0.10	-2.39	
9251.00	89.880	267.520	7354.09	2431.09	1760.93	-921.79	-1684.95	40°33'00.557"N	104°45'34.157"W	0.52	87.14	-0.22	0.47	
9346.00	89.940	268.720	7354.24	2431.24	1855.78	-924.91	-1779.90	40°33'00.526"N	104°45'35.387"W	1.26	72.30	0.06	1.26	
9440.00	90.090	269.190	7354.21	2431.21	1949.53	-926.62	-1873.89	40°33'00.509"N	104°45'36.605"W	0.52	61.11	0.16	0.50	
9535.00	90.250	269.480	7353.93	2430.93	2044.24	-927.73	-1968.88	40°33'00.498"N	104°45'37.835"W	0.35	148.39	0.17	0.31	
9630.00	90.120	269.560	7353.62	2430.62	2138.93	-928.52	-2063.87	40°33'00.490"N	104°45'39.066"W	0.16	-80.88	-0.14	0.08	
9725.00	90.250	268.750	7353.32	2430.32	2233.66	-929.92	-2158.86	40°33'00.476"N	104°45'40.296"W	0.86	-92.60	0.14	-0.85	
9819.00	90.180	267.210	7352.96	2429.96	2327.51	-933.24	-2252.80	40°33'00.443"N	104°45'41.513"W	1.64	69.29	-0.07	-1.64	
9914.00	90.490	268.030	7352.41	2429.41	2422.40	-937.18	-2347.72	40°33'00.404"N	104°45'42.743"W	0.92	90.92	0.33	0.86	
10008.00	90.460	269.880	7351.63	2428.63	2516.15	-938.89	-2441.69	40°33'00.387"N	104°45'43.960"W	1.97	87.18	-0.03	1.97	
10103.00	90.520	271.100	7350.82	2427.82	2610.68	-938.08	-2536.68	40°33'00.395"N	104°45'45.191"W	1.29	146.31	0.06	1.28	
10198.00	90.490	271.120	7349.98	2426.98	2705.11	-936.24	-2631.66	40°33'00.413"N	104°45'46.421"W	0.04	-92.36	-0.03	0.02	
10292.00	90.430	269.670	7349.23	2426.23	2798.67	-935.59	-2725.66	40°33'00.420"N	104°45'47.639"W	1.54	60.64	-0.06	-1.54	
10387.00	90.520	269.830	7348.44	2425.44	2893.32	-936.01	-2820.65	40°33'00.415"N	104°45'48.869"W	0.19	-45.00	0.09	0.17	
10482.00	90.550	269.800	7347.55	2424.55	2987.96	-936.32	-2915.65	40°33'00.412"N	104°45'50.100"W	0.04	87.01	0.03	-0.03	
10577.00	90.650	271.720	7346.56	2423.56	3082.44	-935.06	-3010.63	40°33'00.425"N	104°45'51.330"W	2.02	-166.22	0.11	2.02	
10671.00	90.120	271.590	7345.92	2422.92	3175.78	-932.34	-3104.59	40°33'00.451"N	104°45'52.547"W	0.58	79.77	-0.56	-0.14	
10766.00	90.580	274.140	7345.34	2422.34	3269.84	-927.59	-3199.46	40°33'00.498"N	104°45'53.776"W	2.73	-43.69	0.48	2.68	
10861.00	91.480	273.280	7343.64	2420.64	3363.69	-921.45	-3294.24	40°33'00.559"N	104°45'55.004"W	1.31	-86.81	0.95	-0.91	
10956.00	91.540	272.200	7341.13	2418.13	3457.75	-916.91	-3389.10	40°33'00.603"N	104°45'56.233"W	1.14	-110.53	0.06	-1.14	
11051.00	90.550	269.560	7339.40	2416.40	3552.20	-915.45	-3484.06	40°33'00.618"N	104°45'57.463"W	2.97	-99.10	-1.04	-2.78	
11146.00	90.090	266.690	7338.87	2415.87	3647.03	-918.56	-3579.00	40°33'00.587"N	104°45'58.693"W	3.06	-34.38	-0.48	-3.02	
11240.00	90.280	266.560	7338.57	2415.57	3740.99	-924.09	-3672.84	40°33'00.532"N	104°45'59.909"W	0.24	90.00	0.20	-0.14	
11334.00	90.280	268.100	7338.11	2415.11	3834.90	-928.47	-3766.73	40°33'00.489"N	104°46'01.125"W	1.64	77.91	0.00	1.64	
11429.00	90.310	268.240	7337.62	2414.62	3929.73	-931.50	-3861.68	40°33'00.458"N	104°46'02.355"W	0.15	-90.00	0.03	0.15	
11523.00	90.310	267.590	7337.11	2414.11	4023.60	-934.92	-3955.62	40°33'00.425"N	104°46'03.572"W	0.69	-56.31	0.00	-0.69	
11618.00	90.370	267.500	7336.54	2413.54	4118.49	-938.99	-4050.53	40°33'00.384"N	104°46'04.801"W	0.11	-101.54	0.06	-0.09	
11712.00	90.180	266.570	7336.09	2413.09	4212.42	-943.85	-4144.40	40°33'00.336"N	104°46'06.017"W	1.01	92.15	-0.20	-0.99	
11807.00	90.090	268.960	7335.87	2412.87	4307.29	-947.56	-4239.32	40°33'00.299"N	104°46'07.247"W	2.52	84.97	-0.09	2.52	
11901.00	90.250	270.780	7335.59	2412.59	4400.92	-947.77	-4333.32	40°33'00.297"N	104°46'08.465"W	1.94	-87.45	0.17	1.94	
11996.00	90.370	268.080	7335.08	2412.08	4495.61	-948.72	-4428.30	40°33'00.287"N	104°46'09.695"W	2.84	-140.86	0.13	-2.84	
12090.00	89.510	267.380	7335.17	2412.17	4589.49	-952.44	-4522.23	40°33'00.250"N	104°46'10.912"W	1.18	80.12	-0.91	-0.74	
12185.00	90.000	270.190	7335.58	2412.58	4684.26	-954.45	-4617.19	40°33'00.230"N	104°46'12.142"W	3.00	141.84	0.52	2.96	
12279.00	89.720	270.410	7335.81	2412.81	4777.83	-953.96	-4711.19	40°33'00.235"N	104°46'13.360"W	0.38	40.96	-0.30	0.23	
12374.00	90.250	270.870	7335.84	2412.84	4872.34	-952.90	-4806.19	40°33'00.245"N	104°46'14.590"W	0.74	86.88	0.56	0.48	
12469.00	90.310	271.970	7335.37	2412.37	4966.72	-950.55	-4901.15	40°33'00.268"N	104°46'15.820"W	1.16	95.31	0.06	1.16	
12563.00	90.150	273.690	7334.99	2411.99	5059.80	-945.91	-4995.03	40°33'00.314"N	104°46'17.037"W	1.84	-90.00	-0.17	1.83	

REFERENCE WELLPATH IDENTIFICATION			
Operator	BAYSWATER E&P, LLC	Slot	SLOT#15 LEFFLER F-26-28HN (250'FNL & 235'FWL,SEC.26)
Area	COLORADO	Well	LEFFLER F-26-28HN
Field	WELD COUNTY (NAD83/TRUE NORTH)	Wellbore	LEFFLER F-26-28HN AWB
Facility	SEC.26-T07N-R66W		

WELLPATH DATA (199 stations)														
MD [ft]	Inclination [°]	Azimuth [°]	TVD [ft]	TVDSS [ft]	Vert Sect [ft]	North [ft]	East [ft]	Latitude	Longitude	DLS [°/100ft]	Tooface [°]	Build Rate [°/100ft]	Turn Rate [°/100ft]	Comments
12658.00	90.150	271.100	7334.75	2411.75	5153.97	-941.94	-5089.94	40°33'00.353"N	104°46'18.266"W	2.73	-83.28	0.00	-2.73	
12752.00	90.550	267.700	7334.17	2411.17	5247.66	-942.92	-5183.92	40°33'00.343"N	104°46'19.483"W	3.64	-96.95	0.43	-3.62	
12847.00	90.340	265.980	7333.43	2410.43	5342.59	-948.16	-5278.77	40°33'00.291"N	104°46'20.712"W	1.82	93.30	-0.22	-1.81	
12942.00	90.280	267.020	7332.92	2409.92	5437.55	-953.96	-5373.59	40°33'00.234"N	104°46'21.940"W	1.10	92.84	-0.06	1.09	
13036.00	90.220	268.230	7332.51	2409.51	5531.44	-957.85	-5467.51	40°33'00.195"N	104°46'23.157"W	1.29	84.33	-0.06	1.29	
13130.00	90.550	271.560	7331.88	2408.88	5625.06	-958.02	-5561.49	40°33'00.193"N	104°46'24.375"W	3.56	103.43	0.35	3.54	
13225.00	90.120	273.360	7331.32	2408.32	5719.22	-953.95	-5656.40	40°33'00.233"N	104°46'25.604"W	1.95	78.33	-0.45	1.89	
13320.00	90.310	274.280	7330.97	2407.97	5813.05	-947.62	-5751.19	40°33'00.296"N	104°46'26.832"W	0.99	-18.43	0.20	0.97	
13414.00	90.340	274.270	7330.43	2407.43	5905.78	-940.61	-5844.92	40°33'00.365"N	104°46'28.046"W	0.03	79.38	0.03	-0.01	
13509.00	90.400	274.590	7329.82	2406.82	5999.45	-933.27	-5939.64	40°33'00.437"N	104°46'29.273"W	0.34	-88.83	0.06	0.34	
13603.00	90.430	273.120	7329.14	2406.14	6092.29	-926.95	-6033.42	40°33'00.499"N	104°46'30.488"W	1.56	-97.09	0.03	-1.56	
13698.00	90.150	270.870	7328.66	2405.66	6186.54	-923.65	-6128.35	40°33'00.532"N	104°46'31.718"W	2.39	-72.96	-0.29	-2.37	
13793.00	90.980	268.160	7327.72	2404.72	6281.21	-924.45	-6223.34	40°33'00.523"N	104°46'32.948"W	2.98	-103.11	0.87	-2.85	
13887.00	89.720	262.760	7327.14	2404.14	6375.17	-931.89	-6317.00	40°33'00.450"N	104°46'34.162"W	5.90	89.15	-1.34	-5.74	
13982.00	89.780	266.780	7327.56	2404.56	6470.15	-940.55	-6411.59	40°33'00.364"N	104°46'35.387"W	4.23	91.65	0.06	4.23	
14076.00	89.630	272.040	7328.04	2405.04	6563.82	-941.51	-6505.55	40°33'00.354"N	104°46'36.604"W	5.60	80.72	-0.16	5.60	
14171.00	90.060	274.670	7328.30	2405.30	6657.76	-935.95	-6600.38	40°33'00.409"N	104°46'37.833"W	2.81	-67.48	0.45	2.77	
14265.00	90.400	273.850	7327.92	2404.92	6750.50	-928.97	-6694.12	40°33'00.477"N	104°46'39.047"W	0.94	147.77	0.36	-0.87	
14360.00	89.940	274.140	7327.64	2404.64	6844.29	-922.35	-6788.88	40°33'00.543"N	104°46'40.275"W	0.57	-100.87	-0.48	0.31	
14455.00	89.750	273.150	7327.90	2404.90	6938.17	-916.31	-6883.69	40°33'00.602"N	104°46'41.503"W	1.06	-87.32	-0.20	-1.04	
14548.00	89.850	271.020	7328.22	2405.22	7030.42	-912.93	-6976.62	40°33'00.635"N	104°46'42.707"W	2.29	-86.22	0.11	-2.29	
14642.00	89.940	269.660	7328.40	2405.40	7123.99	-912.37	-7070.62	40°33'00.640"N	104°46'43.924"W	1.45	60.02	0.10	-1.45	
14737.00	90.090	269.920	7328.37	2405.37	7218.63	-912.72	-7165.62	40°33'00.637"N	104°46'45.155"W	0.32	-73.57	0.16	0.27	
14832.00	90.550	268.360	7327.84	2404.84	7313.36	-914.15	-7260.60	40°33'00.622"N	104°46'46.385"W	1.71	-90.00	0.48	-1.64	
14927.00	90.550	267.300	7326.93	2403.93	7408.23	-917.74	-7355.53	40°33'00.587"N	104°46'47.615"W	1.12	-116.56	0.00	-1.12	
15022.00	90.340	266.880	7326.19	2403.19	7503.15	-922.57	-7450.40	40°33'00.539"N	104°46'48.844"W	0.49	-113.20	-0.22	-0.44	
15116.00	90.310	266.810	7325.66	2402.66	7597.09	-927.74	-7544.26	40°33'00.487"N	104°46'50.060"W	0.08	-83.16	-0.03	-0.07	
15211.00	90.370	266.310	7325.09	2402.09	7692.05	-933.44	-7639.09	40°33'00.431"N	104°46'51.288"W	0.53	81.25	0.06	-0.53	
15305.00	90.430	266.700	7324.44	2401.44	7786.01	-939.17	-7732.91	40°33'00.374"N	104°46'52.504"W	0.42	-18.43	0.06	0.41	
15400.00	90.520	266.670	7323.65	2400.65	7880.95	-944.66	-7827.75	40°33'00.319"N	104°46'53.732"W	0.10	125.22	0.09	-0.03	
15494.00	90.400	266.840	7322.90	2399.90	7974.90	-949.98	-7921.59	40°33'00.266"N	104°46'54.948"W	0.22	85.30	-0.13	0.18	
15589.00	90.460	267.570	7322.18	2399.18	8069.82	-954.62	-8016.48	40°33'00.220"N	104°46'56.177"W	0.77	99.92	0.06	0.77	
15683.00	90.250	268.770	7321.60	2398.60	8163.65	-957.62	-8110.42	40°33'00.190"N	104°46'57.394"W	1.30	-107.08	-0.22	1.28	
15777.00	89.780	267.240	7321.58	2398.58	8257.51	-960.89	-8204.36	40°33'00.158"N	104°46'58.611"W	1.70	30.61	-0.50	-1.63	
15872.00	90.490	267.660	7321.35	2398.35	8352.41	-965.12	-8299.27	40°33'00.116"N	104°46'59.840"W	0.87	96.11	0.75	0.44	
15966.00	90.340	269.060	7320.67	2397.67	8446.23	-967.81	-8393.23	40°33'00.089"N	104°47'01.057"W	1.50	83.66	-0.16	1.49	
16061.00	90.400	269.600	7320.06	2397.06	8540.93	-968.92	-8488.22	40°33'00.077"N	104°47'02.288"W	0.57	141.19	0.06	0.57	
16156.00	89.480	270.340	7320.16	2397.16	8635.55	-968.97	-8583.22	40°33'00.076"N	104°47'03.518"W	1.24	67.05	-0.97	0.78	
16250.00	90.310	272.300	7320.33	2397.33	8728.95	-966.80	-8677.18	40°33'00.098"N	104°47'04.736"W	2.26	85.03	0.88	2.09	
16345.00	90.370	272.990	7319.76	2396.76	8823.07	-962.42	-8772.08	40°33'00.141"N	104°47'05.965"W	0.73	-97.30	0.06	0.73	
16440.00	89.970	269.870	7319.48	2396.48	8917.43	-960.05	-8867.04	40°33'00.164"N	104°47'07.195"W	3.31	79.80	-0.42	-3.28	
16536.00	90.400	272.260	7319.17	2396.17	9012.86	-958.26	-8963.02	40°33'00.181"N	104°47'08.439"W	2.53	-18.43	0.45	2.49	
16630.00	90.430	272.250	7318.49	2395.49	9106.07	-954.57	-9056.94	40°33'00.217"N	104°47'09.655"W	0.03	-95.97	0.03	-0.01	
16725.00	90.340	271.390	7317.85	2394.85	9200.36	-951.55	-9151.89	40°33'00.247"N	104°47'10.885"W	0.91	-63.43	-0.09	-0.91	
16820.00	90.710	270.650	7316.98	2393.98	9294.81	-949.86	-9246.87	40°33'00.263"N	104°47'12.116"W	0.87	-91.06	0.39	-0.78	

REFERENCE WELLPATH IDENTIFICATION			
Operator	BAYSWATER E&P, LLC	Slot	SLOT#15 LEFFLER F-26-28HN (250'FNL & 235'FWL,SEC.26)
Area	COLORADO	Well	LEFFLER F-26-28HN
Field	WELD COUNTY (NAD83/TRUE NORTH)	Wellbore	LEFFLER F-26-28HN AWB
Facility	SEC.26-T07N-R66W		

WELLPATH DATA (199 stations)														
MD [ft]	Inclination [°]	Azimuth [°]	TVD [ft]	TVSS [ft]	Vert Sect [ft]	North [ft]	East [ft]	Latitude	Longitude	DLS [°/100ft]	Tooface [°]	Build Rate [°/100ft]	Turn Rate [°/100ft]	Comments
16915.00	90.680	269.040	7315.83	2392.83	9389.44	-950.11	-9341.86	40°33'00.260"N	104°47'13.346"W	1.69	165.53	-0.03	-1.69	
17008.00	90.370	269.120	7314.98	2391.98	9482.18	-951.61	-9434.84	40°33'00.245"N	104°47'14.551"W	0.34	-90.00	-0.33	0.09	
17103.00	90.370	268.480	7314.37	2391.37	9576.95	-953.60	-9529.82	40°33'00.225"N	104°47'15.781"W	0.67	-75.46	0.00	-0.67	
17197.00	90.650	267.400	7313.53	2390.53	9670.81	-956.98	-9623.75	40°33'00.191"N	104°47'16.998"W	1.19	122.66	0.30	-1.15	
17291.00	90.400	267.790	7312.67	2389.67	9764.70	-960.92	-9717.67	40°33'00.152"N	104°47'18.214"W	0.49	97.88	-0.27	0.41	
17386.00	90.220	269.090	7312.15	2389.15	9859.51	-963.51	-9812.63	40°33'00.126"N	104°47'19.445"W	1.38	-81.79	-0.19	1.37	
17481.00	90.370	268.050	7311.66	2388.66	9954.30	-965.88	-9907.60	40°33'00.102"N	104°47'20.675"W	1.11	-90.00	0.16	-1.09	
17576.00	90.370	267.130	7311.05	2388.05	10049.19	-969.87	-10002.51	40°33'00.062"N	104°47'21.904"W	0.97	-85.36	0.00	-0.97	
17670.00	90.430	266.390	7310.39	2387.39	10143.14	-975.18	-10096.36	40°33'00.009"N	104°47'23.120"W	0.79	-82.40	0.06	-0.79	
17764.00	90.490	265.940	7309.64	2386.64	10237.11	-981.47	-10190.14	40°32'59.947"N	104°47'24.335"W	0.48	84.64	0.06	-0.48	
17856.00	90.520	266.260	7308.83	2385.83	10329.08	-987.73	-10281.92	40°32'59.885"N	104°47'25.524"W	0.35	92.95	0.03	0.35	
17951.00	90.430	268.000	7308.04	2385.04	10424.00	-992.48	-10376.80	40°32'59.837"N	104°47'26.753"W	1.83	-85.91	-0.09	1.83	
18045.00	90.460	267.580	7307.31	2384.31	10517.87	-996.11	-10470.73	40°32'59.801"N	104°47'27.969"W	0.45	-61.11	0.03	-0.45	
18139.00	90.620	267.290	7306.43	2383.43	10611.77	-1000.32	-10564.63	40°32'59.759"N	104°47'29.186"W	0.35	94.05	0.17	-0.31	
18234.00	90.520	268.700	7305.48	2382.48	10706.62	-1003.64	-10659.56	40°32'59.726"N	104°47'30.416"W	1.49	-98.32	-0.11	1.48	
18329.00	90.220	266.650	7304.87	2381.87	10801.50	-1007.49	-10754.48	40°32'59.687"N	104°47'31.645"W	2.18	-90.00	-0.32	-2.16	
18424.00	90.220	266.090	7304.50	2381.50	10896.47	-1013.51	-10849.28	40°32'59.628"N	104°47'32.873"W	0.59	-90.00	0.00	-0.59	
18468.00	90.220	265.860	7304.33	2381.33	10940.46	-1016.60	-10893.18	40°32'59.597"N	104°47'33.442"W	0.52	0.00	0.00	-0.52	LAST BHGE MWD SURVEY (1114'FNL & 17'FWL,SEC.28)
18493.00	90.220	265.860	7304.24	2381.24	10965.45	-1018.40	-10918.11	40°32'59.579"N	104°47'33.765"W	0.00		0.00	0.00	EXTRAPOLATED TO TD (1116'FNL & 8'FWL,SEC.28)

HOLE & CASING SECTIONS - Ref Wellbore: LEFFLER F-26-28HN AWB Ref Wellpath: LEFFLER F-26-28HN AWP									
String/Diameter	Start MD [ft]	End MD [ft]	Interval [ft]	Start TVD [ft]	End TVD [ft]	Start N/S [ft]	Start E/W [ft]	End N/S [ft]	End E/W [ft]
17in Conductor	25.00	105.00	80.00	25.00	105.00	0.00	0.00	-0.11	-0.14
13.5in Open Hole	25.00	1568.00	1543.00	25.00	1554.10	0.00	0.00	-139.06	50.76
9.625in Casing Surface	25.00	1568.00	1543.00	25.00	1554.10	0.00	0.00	-139.06	50.76
8.5in Open Hole	1568.00	18493.00	16925.00	1554.10	7304.24	-139.06	50.76	-1018.40	-10918.11

REFERENCE WELLPATH IDENTIFICATION			
Operator	BAYSWATER E&P, LLC	Slot	SLOT#15 LEFFLER F-26-28HN (250'FNL & 235'FWL,SEC.26)
Area	COLORADO	Well	LEFFLER F-26-28HN
Field	WELD COUNTY (NAD83/TRUE NORTH)	Wellbore	LEFFLER F-26-28HN AWB
Facility	SEC.26-T07N-R66W		

TARGETS								
Name	TVD [ft]	North [ft]	East [ft]	Grid East [US ft]	Grid North [US ft]	Latitude	Longitude	Shape
LEFFLER 26 A PAD SEC.26-T07N-R66W	0.00	30.24	14.45	3207472.30	1445087.74	40°33'09.965"N	104°45'12.143"W	polygon
LEFFLER 26 A PAD SEC.27-T07N-R66W	0.00	30.24	14.45	3207472.30	1445087.74	40°33'09.965"N	104°45'12.143"W	polygon
LEFFLER 26 A PAD SEC.28-T07N-R66W	0.00	30.24	14.45	3207472.30	1445087.74	40°33'09.965"N	104°45'12.143"W	polygon
LEFFLER F-26-28HN BHL REV-1 (1150'FNL & 5'FWL,SEC.28)	7303.00	-984.89	-10921.89	3196545.24	1443980.61	40°32'59.910"N	104°47'33.814"W	point
LEFFLER F-26-28HN BHL PLAT (1150'FNL & 5'FWL,SEC.28)	7308.00	-984.89	-10921.89	3196545.24	1443980.61	40°32'59.910"N	104°47'33.814"W	point
LEFFLER F-26-28HN WAYPOINT #6 REV-1	7313.00	-974.88	-9584.59	3197882.37	1444001.87	40°33'00.014"N	104°47'16.490"W	point
LEFFLER F-26-28HN WAYPOINT #4 REV-2	7328.00	-950.46	-6384.50	3201082.04	1444053.24	40°33'00.266"N	104°46'35.036"W	point
LEFFLER F-26-28HN WAYPOINT #5 REV-2	7328.00	-956.70	-7234.65	3200231.99	1444039.84	40°33'00.202"N	104°46'46.049"W	point
LEFFLER F-26-28HN WAYPOINT #3 REV-2	7333.00	-937.67	-4734.61	3202731.71	1444079.91	40°33'00.396"N	104°46'13.663"W	point
LEFFLER F-26-28HN WAYPOINT #2 REV-1	7343.00	-926.26	-3234.78	3204231.34	1444103.95	40°33'00.511"N	104°45'54.234"W	point
LEFFLER F-26-28HN WAYPOINT #1 REV-1	7353.00	-919.80	-2384.68	3205081.33	1444117.57	40°33'00.576"N	104°45'43.222"W	point
LEFFLER F-26-28HN LP PLAT (1150'FNL & 5'FEL,SEC.27)	7353.00	-903.52	-234.83	3207230.90	1444151.95	40°33'00.738"N	104°45'15.372"W	point

WELLPATH COMPOSITION - Ref Wellbore: LEFFLER F-26-28HN AWB Ref Wellpath: LEFFLER F-26-28HN AWP				
Start MD [ft]	End MD [ft]	Positional Uncertainty Model	Log Name/Comment	Wellbore
25.00	1512.00	BHI NaviTrak (Rotating+Axial Corr) 1	13.5" Surface Section - BHI NaviTrak (Rotating+Axial Corr) <25' - 1512'>	LEFFLER F-26-28HN AWB
1512.00	18468.00	BHI AutoTrak Curve (Short)	8.5" Monobore Section - BHI AutoTrak Curve (Short) <1593'-18468'>	LEFFLER F-26-28HN AWB
18468.00	18493.00	Blind Drilling (std)	Projection to bit	LEFFLER F-26-28HN AWB

REFERENCE WELLPATH IDENTIFICATION			
Operator	BAYSWATER E&P, LLC	Slot	SLOT#15 LEFFLER F-26-28HN (250'FNL & 235'FWL,SEC.26)
Area	COLORADO	Well	LEFFLER F-26-28HN
Field	WELD COUNTY (NAD83/TRUE NORTH)	Wellbore	LEFFLER F-26-28HN AWB
Facility	SEC.26-T07N-R66W		

WELLPATH COMMENTS				
MD [ft]	Inclination [°]	Azimuth [°]	TVD [ft]	Comment
0.00	0.000	232.630	0.00	KB
25.00	0.000	232.630	25.00	GL
231.00	0.660	232.630	231.00	FIRST BHGE MWD SURVEY
1568.00	13.663	159.702	1554.10	9 7/8" SURFACE CASING (INTERPOLATED)
18468.00	90.220	265.860	7304.33	LAST BHGE MWD SURVEY (1114'FNL & 17'FWL,SEC.28)
18493.00	90.220	265.860	7304.24	EXTRAPOLATED TO TD (1116'FNL & 8'FWL,SEC.28)