

LINE TABLE		
LINE	DIRECTION	LENGTH
L43	N37°44'15"E	2788.57'
L44	S60°00'09"W	63.24'
L45	N39°26'15"E	2532.55'
L46	S60°00'01"W	57.88'
L47	N43°18'31"E	2339.22'
L48	S60°00'10"W	63.26'
L49	N47°51'26"E	2126.43'
L50	S60°00'25"W	57.69'
L51	N53°16'41"E	1962.46'
L52	S59°59'37"W	63.82'
L53	N59°50'10"E	1793.14'
L54	S59°59'51"W	64.22'

LINE TABLE		
LINE	DIRECTION	LENGTH
L55	N67°17'59"E	1672.12'
L56	S60°00'11"W	65.67'
L57	N73°49'47"E	1487.87'
L58	S59°59'41"W	62.55'

LINE TABLE			LINE TABLE			LINE TABLE		
LINE	DIRECTION	LENGTH	LINE	DIRECTION	LENGTH	LINE	DIRECTION	LENGTH
L1	N15°06'38"W	3104.34'	L15	N42°31'20"W	1627.26'	L29	S60°25'18"W	1310.70'
L2	S60°24'14"W	53.96'	L16	S59°59'40"W	38.63'	L30	S59°59'46"W	64.91'
L3	N17°54'17"W	2904.50'	L17	N48°56'46"W	1424.25'	L31	S51°54'56"W	1482.86'
L4	S60°00'03"W	61.23'	L18	S60°00'14"W	58.44'	L32	S59°59'47"W	55.97'
L5	N19°42'17"W	2665.29'	L19	N58°13'00"W	1268.03'	L33	S46°30'03"W	2124.85'
L6	S59°59'45"W	64.92'	L20	S60°00'20"W	60.31'	L34	S60°00'34"W	63.29'
L7	N22°23'34"W	2407.51'	L21	N70°02'43"W	1159.42'	L35	S44°48'30"W	1693.46'
L8	S60°00'11"W	53.93'	L22	S60°00'01"W	52.85'	L36	S59°59'54"W	48.79'
L9	N25°04'53"W	2164.54'	L23	N82°44'58"W	1124.90'	L37	S43°03'23"W	2307.63'
L10	S59°59'54"W	59.78'	L24	S60°00'15"W	61.35'	L38	S60°00'07"W	54.98'
L11	N28°37'11"W	1945.25'	L25	S83°42'30"W	1109.16'	L39	N32°22'37"E	3232.21'
L12	S59°59'47"W	61.88'	L26	S59°59'56"W	62.93'	L40	S59°59'52"W	54.08'
L13	N33°13'53"W	1717.74'	L27	S71°01'41"W	1190.74'	L41	N34°50'47"E	2997.43'
L14	S60°00'27"W	57.12'	L28	S60°00'19"W	58.24'	L42	S59°59'36"W	59.72'

- LEGEND:**
- ◆ = TOP OF GAS INTERVAL.
 - = TARGET BOTTOM HOLE.
 - ▲ = SECTION CORNERS LOCATED.



UELS, LLC
Corporate Office * 85 South 200 East
Vernal, UT 84078 * (435) 789-1017

REV: 4 12-04-19 T.L.L. (TGI & BHL MOVES)

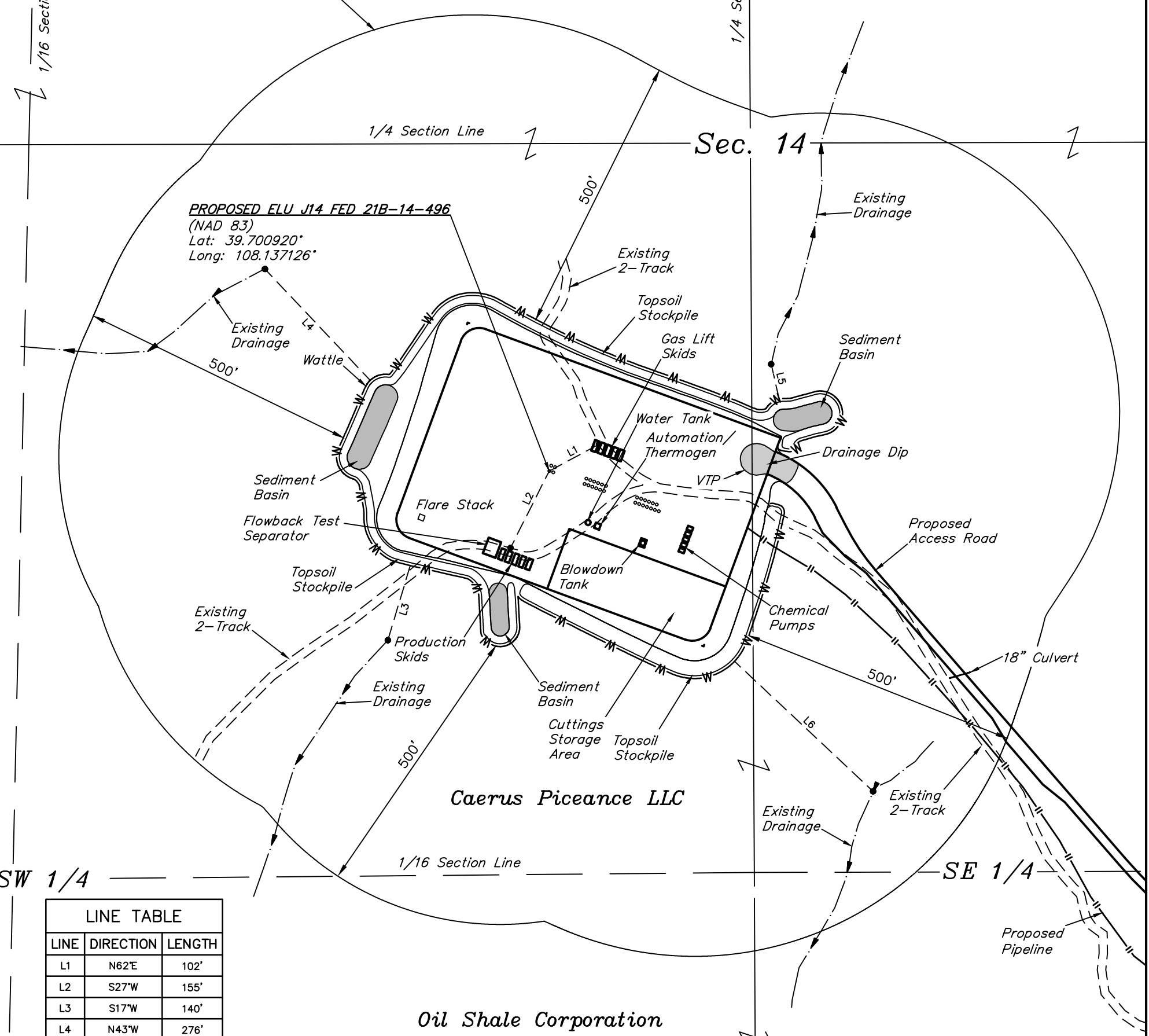
Caerus Oil & Gas LLC

ELU J14 FED 496 PAD
NE 1/4 SW 1/4, SECTION 14, T4S, R96W, 6th P.M.
RIO BLANCO COUNTY, COLORADO

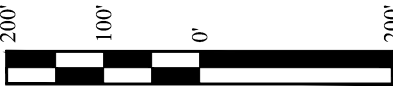
SURVEYED BY	DENNIS PETTY, J.L.	12-20-18	SCALE
DRAWN BY	M.D.	02-26-19	1" = 400'
TARGET BOTTOM HOLE DRAWING		FIGURE #5A	



NE 1/4



LINE TABLE		
LINE	DIRECTION	LENGTH
L1	N62°E	102'
L2	S27°W	155'
L3	S17°W	140'
L4	N43°W	276'
L5	N13°W	64'
L6	S47°E	342'



REV: 7 12-06-19 M.D. (CULVERT CHANGE)

PLANT COMMUNITY	
<input type="checkbox"/> DISTURBED GRASSLAND	
<input type="checkbox"/> NATIVE GRASSLAND	
<input checked="" type="checkbox"/> SHRUB LAND	
<input type="checkbox"/> PLAINS RIPARIAN	
<input type="checkbox"/> MOUNTAIN RIPARIAN	
<input type="checkbox"/> FOREST LAND	
<input type="checkbox"/> WETLANDS AQUATIC	
<input type="checkbox"/> ALPINE	
<input type="checkbox"/> OTHER (Describe):	

CURRENT LAND USE					
CROP LAND:	<input type="checkbox"/> IRRIGATED	<input type="checkbox"/> DRY LAND	<input type="checkbox"/> IMPROVED PASTURE	<input type="checkbox"/> HAY MEADOW	<input type="checkbox"/> CRP
NON-CROP LAND:	<input checked="" type="checkbox"/> RANGELAND	<input type="checkbox"/> TIMBER	<input type="checkbox"/> RECREATIONAL	<input type="checkbox"/> OTHER (Describe)	
SUBDIVIDED:	<input type="checkbox"/> INDUSTRIAL	<input type="checkbox"/> COMMERCIAL	<input type="checkbox"/> RESIDENTIAL		

FUTURE LAND USE					
CROP LAND:	<input type="checkbox"/> IRRIGATED	<input type="checkbox"/> DRY LAND	<input type="checkbox"/> IMPROVED PASTURE	<input type="checkbox"/> HAY MEADOW	<input type="checkbox"/> CRP
NON-CROP LAND:	<input checked="" type="checkbox"/> RANGELAND	<input type="checkbox"/> TIMBER	<input type="checkbox"/> RECREATIONAL	<input type="checkbox"/> OTHER (Describe)	
SUBDIVIDED:	<input type="checkbox"/> INDUSTRIAL	<input type="checkbox"/> COMMERCIAL	<input type="checkbox"/> RESIDENTIAL		

NOTES:
• There are no existing improvements within 500' of the proposed disturbance.

Caerus Oil & Gas LLC

ELU J14 FED 496 PAD
NE 1/4 SW 1/4, SECTION 14, T4S, R96W, 6th P.M.
RIO BLANCO COUNTY, COLORADO



UELS, LLC
Corporate Office * 85 South 200 East
Vernal, UT 84078 * (435) 789-1017

SURVEYED BY	DENNIS PETTY, J.L.	12-20-18	SCALE
DRAWN BY	M.D.	01-22-19	1" = 200'

LOCATION DRAWING

FIGURE #6