



FORM F-106

80-1930



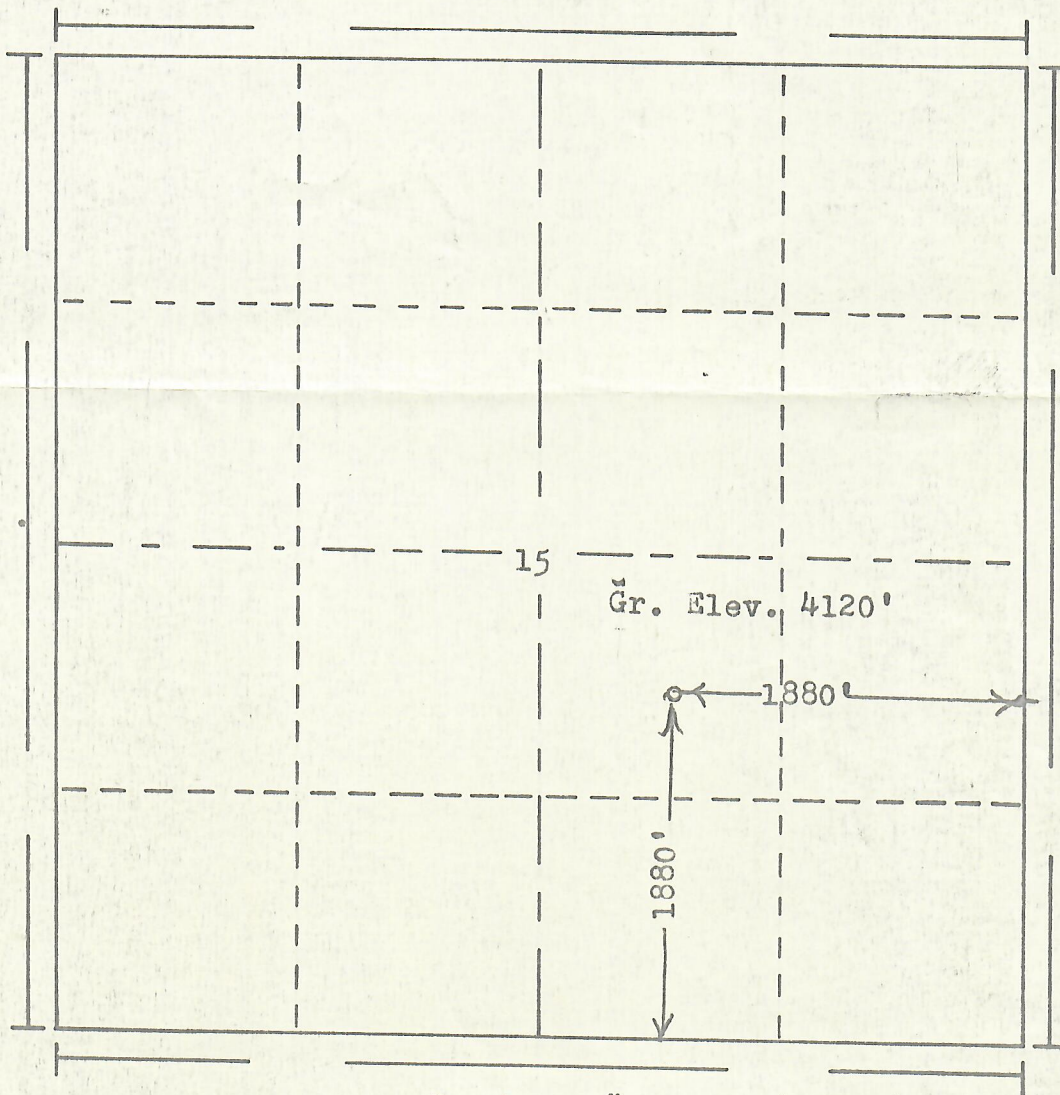
00238499

R. 53W

RECEIVED
FEB 17 1981

COLO. OIL & GAS CONS. COMM.

N

T. 9
N

Scale... 1" = 1000'

Powers Elevation of Denver, Colorado
has in accordance with a request from Mr. Gear
for Centennial Petroleum, Inc.
determined the location of No. 1 Ricke
to be 1880'FS & 1880'FE Section 15 Township 9N
Range 53W of the 6th Principal Meridian
Logan County, Colorado

I hereby certify that this plat is an
accurate representation of a correct
survey showing the location of

Date: 12-31-80

B. L. H. H.
Licensed Land Surveyor No. 2853
State of Colorado