

Steve



FORM F-106



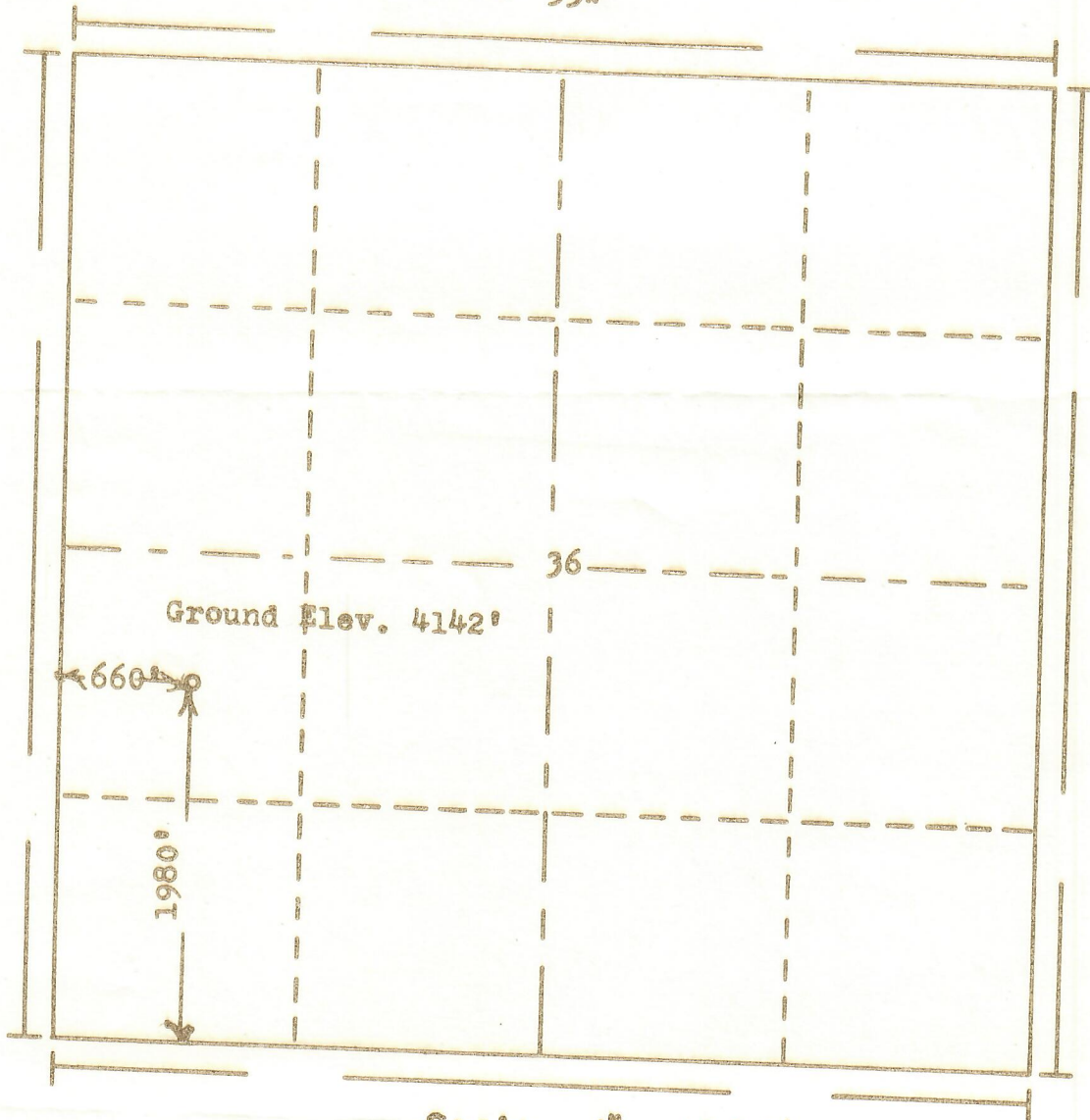
00241467

RECEIVED

JUL 6 1973

COLO. OIL & GAS CONS. COMM.

R. 53W



T. 9 N

Scale... 1" = 1000'

Powers Elevation Company, Inc. of Denver, Colorado has in accordance with a request from Mr. Gear for Thomas B. Burns et al

determined the location of No. 1 State to be CNW SW Section 36 Township 9N Range 53W of the 6th Principal Meridian Logan County, Colorado

I hereby certify that this plat is an accurate representation of a correct survey showing the location of

Date: 6-26-73

B. J. Hall
Licensed Land Surveyor No. 2853
State of Colorado

73-438