

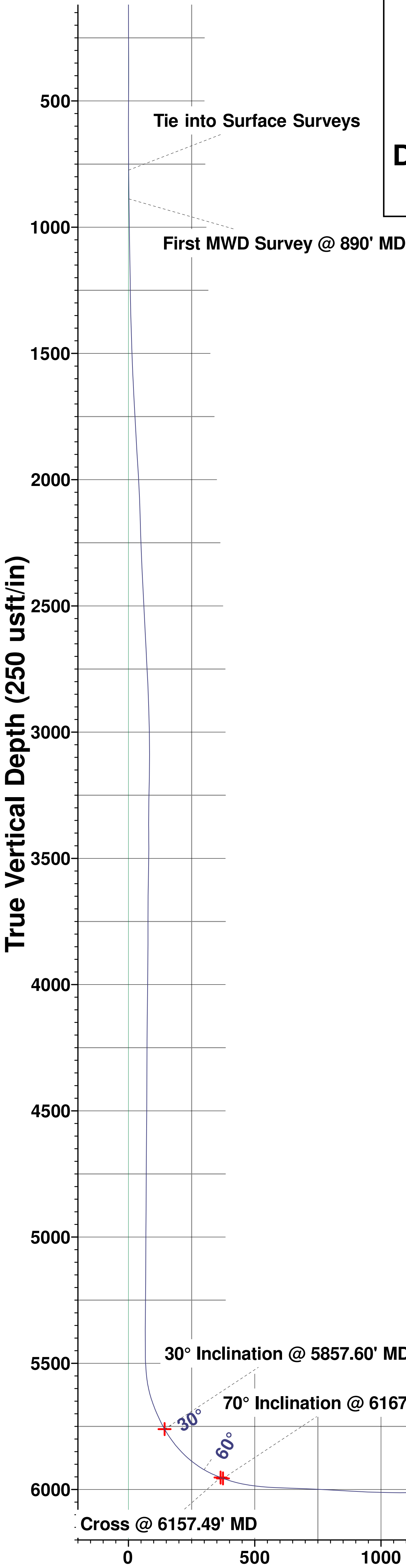
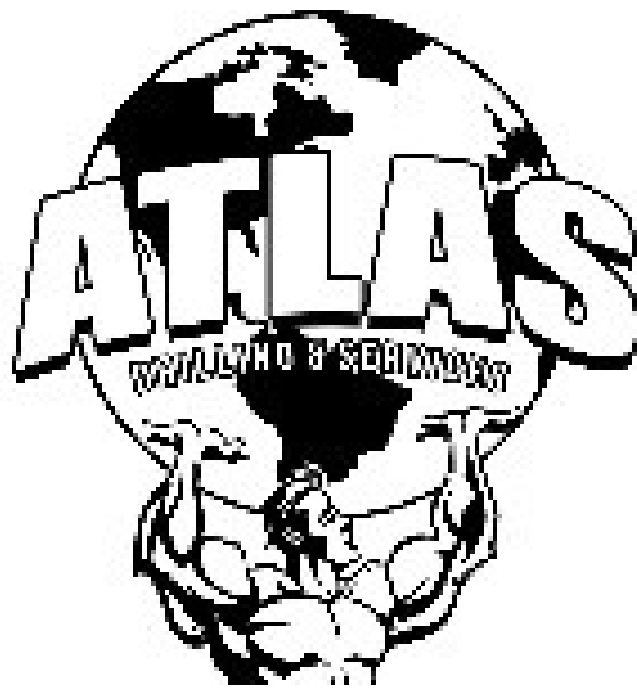


PROJECT DETAILS: Weld County, CO (NAD83)
Geodetic System: US State Plane 1983
Datum: North American Datum 1983
Ellipsoid: GRS 1980
Zone: Colorado Northern Zone
System Datum: Mean Sea Level
Local North: True

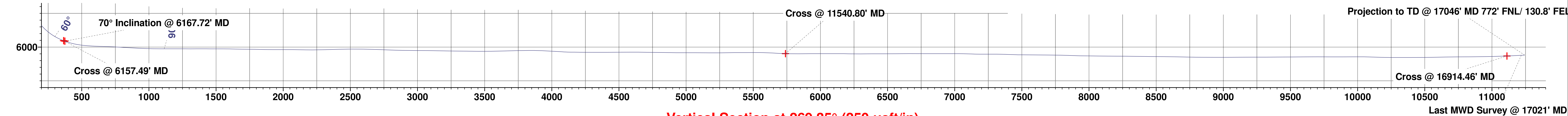
HighPoint Resources
Project: Weld County, CO (NAD83)
Site: Sec 04-T04N-R61W
Well: RSU Anschutz Fed 4-61-05-0909CN
Wellbore: Wellbore #1
Design: Wellbore #1 (RSU Anschutz Fed 4-61-05-0909CN)
Cade 23

WELL DETAILS: RSU Anschutz Fed 4-61-05-0909CN

Ground Elevation:: 4501.50
RKB Elevation: KB @ 4518.00usft (Cade 23)
Rig Name: Cade 23



Vertical Section at 269.35° (250 usft/in)



Vertical Section at 269.35° (250 usft/in)

ANNOTATIONS									
MD	Inc	Azi	TVD	+N/-S	+E/-W	VSect	Departure	Annotation	
775.00	5.92	355.84	773.85	27.51	-1.21	0.90	31.11	Tie into Surface Surveys	
890.00	6.24	353.46	888.20	39.63	-2.36	1.91	43.29	First MWD Survey @ 890' MD	
5857.60	29.93	270.90	5760.80	683.98	-150.80	143.03	818.69	30° Inclination @ 5857.60' MD	
6157.49	68.86	271.09	5952.61	669.23	-372.50	364.89	1040.37	Cross @ 6157.49' MD	
6167.72	69.99	271.51	5956.20	669.45	-382.08	374.46	1049.93	70° Inclination @ 6167.72' MD	
11540.80	88.33	270.53	6048.63	594.56	-5747.00	5739.89	6416.81	Cross @ 11540.80' MD	
16914.46	92.38	270.37	6066.13	549.85	-11119.00	11112.05	11789.92	Cross @ 16914.46' MD	
17021.00	93.34	270.44	6060.81	550.69	-11225.40	11218.43	11896.33	Last MWD Survey @ 17021' MD	
17046.00	93.51	270.33	6059.31	550.86	-11250.36	11243.38	11921.29	Projection to TD @ 17046' MD 772' FNL/ 130.8' FEL	



Directional Survey Report

Company Name: High Point

Well Name: RSU Anshutz 04-61-05-0909CN

Field: DJ Basin

Rig ID: Cade 23

State/Prov: Colorado

County: Weld

Location: East of Greeley

API/UWI: 05-123-50078

Survey Company: Atlas Drilling Services

Job Number: 00251-HI-CO

Latitude: 40.346010

Longitude: -104.224228

Proposed Azimuth: 269.35

Declination: 7.68

North Reference: True

KB: 4518

Svy	Depth	Inc	Azm	TVD	NS	EW	VS	DLS	Northing	Easting	A/B	L/R	GTot	HTot	DipA
Tiein	0	0	0	0	0	0	0	0	0	0			0	0	0
1	242	0.62	198.83	242.00	-1.24	-0.42	0.44	0.26	-1.24	-0.42			1.00	0.53	67.68
2	334	0.49	342.18	333.99	-1.34	-0.70	0.72	1.15	-1.34	-0.70			1.00	0.52	69.52
3	426	1.94	5.27	425.97	0.59	-0.68	0.67	1.63	0.59	-0.68			1.00	0.53	67.94
4	517	3.45	2.89	516.87	4.86	-0.40	0.35	1.66	4.86	-0.40			1.00	0.53	68.38
5	610	4.91	358.71	609.62	11.63	-0.35	0.22	1.60	11.63	-0.35			1.00	0.52	66.36
6	701	5.70	356.50	700.23	20.04	-0.71	0.49	0.90	20.04	-0.71			1.00	0.52	67.50
7	775	5.92	355.84	773.85	27.51	-1.21	0.90	0.31	27.51	-1.21			1.00	0.52	67.50
8	890	6.24	353.46	888.20	39.63	-2.36	1.91	0.35	39.63	-2.36			1.00	0.52	68.16
9	982	6.70	352.83	979.61	49.93	-3.60	3.03	0.51	49.93	-3.60			1.00	0.52	66.33
10	1074	6.95	351.67	1,070.96	60.76	-5.07	4.38	0.31	60.76	-5.07			1.00	0.53	66.81
11	1166	7.33	350.76	1,162.25	72.06	-6.82	6.00	0.43	72.06	-6.82			1.00	0.52	65.37
12	1258	8.82	354.55	1,253.33	84.87	-8.43	7.47	1.72	84.87	-8.43			1.00	0.52	67.42
13	1350	10.77	351.93	1,343.99	100.41	-10.31	9.17	2.17	100.41	-10.31			1.00	0.52	66.52
14	1442	10.81	349.42	1,434.36	117.40	-13.10	11.77	0.51	117.40	-13.10			1.00	0.52	66.81
15	1534	12.46	348.98	1,524.47	135.62	-16.58	15.04	1.80	135.62	-16.58			1.00	0.52	67.31
16	1630	14.67	348.58	1,617.79	157.71	-20.97	19.18	2.30	157.71	-20.97			1.00	0.53	67.41
17	1726	16.26	349.42	1,710.31	182.84	-25.84	23.77	1.67	182.84	-25.84			1.00	0.52	66.82
18	1821	16.60	348.56	1,801.43	209.21	-30.98	28.60	0.44	209.21	-30.98			1.00	0.52	66.83
19	1916	16.42	347.92	1,892.51	235.64	-36.48	33.80	0.27	235.64	-36.48			1.00	0.53	67.43
20	2011	15.83	346.70	1,983.77	261.38	-42.27	39.30	0.72	261.38	-42.27			1.00	0.52	66.81
21	2107	15.16	350.91	2,076.29	286.52	-47.27	44.01	1.36	286.52	-47.27			1.00	0.53	66.86
22	2202	14.94	354.31	2,168.03	310.97	-50.44	46.91	0.96	310.97	-50.44			1.00	0.52	66.70
23	2298	16.06	351.17	2,260.54	336.41	-53.71	49.89	1.46	336.41	-53.71			1.00	0.52	67
24	2393	16.11	349.94	2,351.82	362.37	-58.03	53.91	0.36	362.37	-58.03			1.00	0.52	66.98
25	2488	16.81	350.15	2,442.93	388.88	-62.68	58.26	0.74	388.88	-62.68			1.00	0.52	66.98
26	2584	16.91	349.63	2,534.80	416.29	-67.57	62.84	0.19	416.29	-67.57			1.00	0.53	66.98
27	2679	16.47	349.59	2,625.80	443.13	-72.49	67.46	0.46	443.13	-72.49			1.00	0.52	66.96
28	2775	15.12	348.22	2,718.17	468.77	-77.50	72.18	1.46	468.77	-77.50			1.00	0.52	66.92
29	2871	13.62	348.35	2,811.16	492.10	-82.34	76.75	1.56	492.10	-82.34			1.00	0.53	67.07
30	2967	14.10	352.20	2,904.37	514.76	-86.21	80.37	1.08	514.76	-86.21			1.00	0.52	66.85
31	3062	14.16	353.53	2,996.50	537.77	-89.09	82.99	0.35	537.77	-89.09			1.00	0.53	66.84
32	3157	13.70	0.61	3,088.71	560.56	-90.28	83.92	1.86	560.56	-90.28			1.00	0.52	66.71
33	3253	14.50	3.68	3,181.82	583.93	-89.39	82.76	1.14	583.93	-89.39			1.00	0.52	66.99

Svy	Depth	Inc	Azm	TVD	NS	EW	VS	DLS	Northing	Easting	A/B	L/R	GTot	HTot	DipA
34	3348	14.93	3.97	3,273.70	608.00	-87.78	80.88	0.46	608.00	-87.78			1.00	0.52	67.26
35	3444	13.53	358.01	3,366.76	631.57	-87.31	80.14	2.11	631.57	-87.31			1.00	0.53	66.90
36	3540	11.47	358.62	3,460.48	652.33	-87.93	80.53	2.15	652.33	-87.93			1.00	0.52	66.67
37	3635	9.93	5.77	3,553.83	669.93	-87.34	79.73	2.14	669.93	-87.34			1.00	0.52	67
38	3731	7.35	9.21	3,648.73	684.23	-85.52	77.75	2.74	684.23	-85.52			1.00	0.52	66.90
39	3827	4.32	344.64	3,744.24	693.78	-85.50	77.62	4.02	693.78	-85.50			1.00	0.52	66.89
40	3923	2.45	28.03	3,840.08	699.08	-85.49	77.55	3.17	699.08	-85.49			1.00	0.52	67.07
41	4019	0.34	180.86	3,936.05	700.60	-84.53	76.58	2.87	700.60	-84.53			1.00	0.52	67.14
42	4114	1.55	143.27	4,031.04	699.29	-83.76	75.83	1.37	699.29	-83.76			1.00	0.52	67
43	4210	1.63	153.33	4,127.00	697.03	-82.38	74.46	0.30	697.03	-82.38			1.00	0.52	67.03
44	4305	0.90	156.91	4,221.98	695.14	-81.48	73.59	0.77	695.14	-81.48			1.00	0.52	67.04
45	4400	0.80	163.31	4,316.97	693.82	-80.99	73.12	0.14	693.82	-80.99			1.00	0.52	66.90
46	4495	0.74	166.40	4,411.96	692.58	-80.66	72.80	0.08	692.58	-80.66			1.00	0.52	66.97
47	4590	0.91	148.01	4,506.95	691.35	-80.11	72.27	0.33	691.35	-80.11			1.00	0.52	67.09
48	4686	0.72	143.58	4,602.94	690.22	-79.35	71.52	0.21	690.22	-79.35			1.00	0.52	67.15
49	4782	0.67	140.29	4,698.93	689.30	-78.64	70.81	0.07	689.30	-78.64			1.00	0.52	67.05
50	4878	0.78	169.92	4,794.93	688.22	-78.16	70.35	0.40	688.22	-78.16			1.00	0.52	66.99
51	4973	1.04	144.97	4,889.91	686.88	-77.55	69.76	0.49	686.88	-77.55			1.00	0.52	67.01
52	5069	0.60	163.18	4,985.90	685.69	-76.91	69.13	0.53	685.69	-76.91			1.00	0.52	67.08
53	5165	1.04	166.25	5,081.89	684.36	-76.56	68.79	0.46	684.36	-76.56			1.00	0.52	67.13
54	5260	0.82	164.09	5,176.88	682.87	-76.17	68.41	0.23	682.87	-76.17			1.00	0.52	67.10
55	5355	1.27	146.43	5,271.87	681.34	-75.40	67.66	0.58	681.34	-75.40			1.00	0.52	67.06
56	5450	1.46	156.25	5,366.84	679.35	-74.33	66.62	0.32	679.35	-74.33			1.00	0.52	66.93
57	5546	1.16	219.37	5,462.82	677.48	-74.45	66.76	1.45	677.48	-74.45			1.00	0.52	66.99
58	5640	6.35	279.39	5,556.60	677.59	-80.19	72.50	6.23	677.59	-80.19			1.00	0.52	67.12
59	5735	19.07	276.37	5,649.08	680.18	-100.88	93.16	13.40	680.18	-100.88			1.00	0.52	67.20
60	5829	26.69	274.12	5,735.63	683.41	-137.25	129.49	8.16	683.41	-137.25			1.00	0.52	67.16
61	5925	37.80	265.35	5,816.74	682.57	-188.27	180.51	12.53	682.57	-188.27			1.00	0.52	67.29
62	6019	50.56	261.70	5,884.02	674.96	-253.17	245.50	13.84	674.96	-253.17			1.00	0.52	67.02
63	6114	64.08	269.27	5,935.25	669.09	-332.64	325.03	15.72	669.09	-332.64			1.00	0.52	66.97
64	6209	74.55	273.11	5,968.77	671.03	-421.35	413.71	11.65	671.03	-421.35			1.00	0.52	66.90
65	6305	83.83	272	5,986.76	675.22	-515.45	507.76	9.73	675.22	-515.45			1.00	0.52	66.99
66	6400	88.20	270.78	5,993.36	677.52	-610.17	602.44	4.77	677.52	-610.17			1.00	0.52	66.96
67	6491	87.78	270.44	5,996.55	678.48	-701.11	693.37	0.59	678.48	-701.11			1.00	0.52	66.85
68	6586	86.73	271.19	6,001.10	679.83	-795.99	788.22	1.36	679.83	-795.99			1.00	0.52	66.87
69	6682	86.69	271.07	6,006.61	681.72	-891.81	884.02	0.13	681.72	-891.81			1.00	0.52	66.88
70	6778	88.08	269.46	6,010.99	682.17	-987.70	979.90	2.21	682.17	-987.70			1.00	0.52	66.91
71	6874	89.78	270.29	6,012.78	681.96	-1,083.68	1,075.88	1.97	681.96	-1,083.68			1.00	0.52	66.88
72	6968	90.32	273.12	6,012.70	684.75	-1,177.63	1,169.79	3.06	684.75	-1,177.63			1.00	0.52	66.90
73	7064	89.52	272.24	6,012.83	689.24	-1,273.52	1,265.62	1.24	689.24	-1,273.52			1.00	0.52	66.90
74	7110	89.83	274.23	6,013.09	691.84	-1,319.45	1,311.51	4.38	691.84	-1,319.45			1.00	0.52	66.89
75	7159	90.60	273.79	6,012.91	695.26	-1,368.33	1,360.35	1.81	695.26	-1,368.33			1.00	0.52	66.86
76	7191	89.79	271.10	6,012.80	696.63	-1,400.29	1,392.30	8.78	696.63	-1,400.29			1.00	0.52	66.86
77	7223	89.68	270.25	6,012.95	697.01	-1,432.29	1,424.29	2.68	697.01	-1,432.29			1.00	0.52	66.87
78	7254	90.01	269.26	6,013.03	696.87	-1,463.29	1,455.29	3.37	696.87	-1,463.29			1.00	0.52	66.90

Svy	Depth	Inc	Azm	TVD	NS	EW	VS	DLS	Northing	Easting	A/B	L/R	GTot	HTot	DipA
79	7350	89.88	267.53	6,013.13	694.18	-1,559.25	1,551.27	1.81	694.18	-1,559.25			1.00	0.52	66.90
80	7445	88.32	266.81	6,014.62	689.50	-1,654.12	1,646.19	1.81	689.50	-1,654.12			1.00	0.52	66.87
81	7540	89.90	267.34	6,016.09	684.65	-1,748.98	1,741.10	1.75	684.65	-1,748.98			1.00	0.52	66.88
82	7635	88.35	267.06	6,017.54	680.01	-1,843.85	1,836.02	1.66	680.01	-1,843.85			1.00	0.52	66.88
83	7730	89.71	267.10	6,019.15	675.17	-1,938.71	1,930.93	1.43	675.17	-1,938.71			1.00	0.52	66.89
84	7825	90.30	267.76	6,019.14	670.91	-2,033.62	2,025.87	0.93	670.91	-2,033.62			1.00	0.52	66.87
85	7921	88.90	266.72	6,019.81	666.29	-2,129.50	2,121.80	1.82	666.29	-2,129.50			1.00	0.52	66.89
86	8016	89.93	267.23	6,020.78	661.27	-2,224.36	2,216.72	1.21	661.27	-2,224.36			1.00	0.52	66.96
87	8112	91.80	267.67	6,019.34	657.00	-2,320.25	2,312.65	2.00	657.00	-2,320.25			1.00	0.52	66.88
88	8207	91.68	267.94	6,016.45	653.37	-2,415.14	2,407.57	0.31	653.37	-2,415.14			1.00	0.52	66.91
89	8302	90.12	269.06	6,014.96	650.88	-2,510.09	2,502.54	2.02	650.88	-2,510.09			1.00	0.52	66.89
90	8397	89.29	268.83	6,015.45	649.13	-2,605.07	2,597.54	0.91	649.13	-2,605.07			1.00	0.52	66.92
91	8492	88.11	267.91	6,017.60	646.43	-2,700.00	2,692.50	1.57	646.43	-2,700.00			1.00	0.52	66.91
92	8587	87.37	268.43	6,021.35	643.40	-2,794.88	2,787.40	0.95	643.40	-2,794.88			1.00	0.52	66.90
93	8682	88.92	269.24	6,024.42	641.47	-2,889.81	2,882.34	1.84	641.47	-2,889.81			1.00	0.52	66.88
94	8778	89.70	269.56	6,025.58	640.46	-2,985.79	2,978.34	0.88	640.46	-2,985.79			1.00	0.52	66.88
95	8874	89.54	270.02	6,026.22	640.11	-3,081.79	3,074.33	0.51	640.11	-3,081.79			1.00	0.52	66.89
96	8969	88.63	269.48	6,027.73	639.70	-3,176.78	3,169.32	1.11	639.70	-3,176.78			1.00	0.52	66.91
97	9065	89.50	268.51	6,029.30	638.01	-3,272.75	3,265.30	1.36	638.01	-3,272.75			1.00	0.52	66.92
98	9160	89.38	268.14	6,030.23	635.24	-3,367.70	3,360.28	0.41	635.24	-3,367.70			1.00	0.52	66.90
99	9255	89.30	267.41	6,031.32	631.55	-3,462.62	3,455.24	0.77	631.55	-3,462.62			1.00	0.52	66.94
100	9349	91.20	269.27	6,030.91	628.83	-3,556.57	3,549.21	2.83	628.83	-3,556.57			1.00	0.52	66.91
101	9444	91.30	269.47	6,028.84	627.78	-3,651.55	3,644.19	0.24	627.78	-3,651.55			1.00	0.52	66.91
102	9539	91.59	269.20	6,026.45	626.68	-3,746.51	3,739.16	0.42	626.68	-3,746.51			1.00	0.52	66.89
103	9634	90.13	269.86	6,025.02	625.90	-3,841.49	3,834.14	1.69	625.90	-3,841.49			1.00	0.52	66.89
104	9729	87.50	270.61	6,026.98	626.29	-3,936.46	3,929.10	2.88	626.29	-3,936.46			1.00	0.52	66.87
105	9824	86.69	271	6,031.80	627.62	-4,031.33	4,023.95	0.95	627.62	-4,031.33			1.00	0.52	66.89
106	9876	86.37	270.68	6,034.95	628.38	-4,083.23	4,075.84	0.87	628.38	-4,083.23			1.00	0.52	66.93
107	9919	88.12	269.66	6,037.01	628.51	-4,126.18	4,118.78	4.71	628.51	-4,126.18			1.00	0.52	66.97
108	9966	89.77	268.61	6,037.88	627.80	-4,173.16	4,165.77	4.16	627.80	-4,173.16			1.00	0.52	66.93
109	10014	89.32	269.67	6,038.26	627.08	-4,221.15	4,213.77	2.40	627.08	-4,221.15			1.00	0.52	66.94
110	10110	89.63	269.55	6,039.14	626.43	-4,317.15	4,309.76	0.35	626.43	-4,317.15			1.00	0.52	66.95
111	10205	90.73	269.28	6,038.84	625.46	-4,412.14	4,404.76	1.19	625.46	-4,412.14			1.00	0.52	66.95
112	10300	90.05	270.24	6,038.19	625.06	-4,507.14	4,499.75	1.24	625.06	-4,507.14			1.00	0.52	66.92
113	10396	90.37	269.92	6,037.84	625.19	-4,603.13	4,595.75	0.47	625.19	-4,603.13			1.00	0.52	66.95
114	10490	88.85	269.33	6,038.48	624.58	-4,697.13	4,689.74	1.73	624.58	-4,697.13			1.00	0.52	66.91
115	10586	89.82	268.28	6,039.60	622.58	-4,793.10	4,785.73	1.49	622.58	-4,793.10			1.00	0.52	66.91
116	10681	88.58	268.70	6,040.92	620.07	-4,888.05	4,880.70	1.38	620.07	-4,888.05			1.00	0.52	66.96
117	10777	90.14	268.25	6,041.99	617.52	-4,984.01	4,976.68	1.69	617.52	-4,984.01			1.00	0.52	66.91
118	10873	89.94	267.85	6,041.93	614.25	-5,079.95	5,072.66	0.47	614.25	-5,079.95			1.00	0.52	66.89
119	10969	89.02	268.34	6,042.80	611.06	-5,175.90	5,168.63	1.09	611.06	-5,175.90			1.00	0.52	66.95
120	11064	91.32	268.16	6,042.52	608.16	-5,270.84	5,263.61	2.43	608.16	-5,270.84			1.00	0.52	66.93
121	11160	90.43	266.48	6,041.05	603.67	-5,366.72	5,359.53	1.98	603.67	-5,366.72			1.00	0.52	66.88
122	11201	89.76	265.95	6,040.98	600.97	-5,407.63	5,400.47	2.08	600.97	-5,407.63			1.00	0.52	66.92
123	11255	90.16	265.33	6,041.02	596.86	-5,461.48	5,454.35	1.37	596.86	-5,461.48			1.00	0.52	66.92

Svy	Depth	Inc	Azm	TVD	NS	EW	VS	DLS	Northing	Easting	A/B	L/R	GTot	HTot	DipA
124	11300	90.73	268.20	6,040.67	594.32	-5,506.40	5,499.30	6.50	594.32	-5,506.40			1.00	0.52	66.89
125	11351	89.31	269.93	6,040.65	593.49	-5,557.39	5,550.30	4.39	593.49	-5,557.39			1.00	0.52	66.93
126	11446	86.36	270.42	6,044.24	593.78	-5,652.31	5,645.21	3.15	593.78	-5,652.31			1.00	0.52	66.87
127	11542	88.36	270.53	6,048.66	594.57	-5,748.20	5,741.09	2.09	594.57	-5,748.20			1.00	0.52	66.92
128	11638	90.40	271.55	6,049.70	596.32	-5,844.17	5,837.03	2.38	596.32	-5,844.17			1.00	0.52	66.93
129	11730	90.29	271.92	6,049.15	599.10	-5,936.13	5,928.95	0.42	599.10	-5,936.13			1.00	0.52	66.90
130	11822	89.62	269.55	6,049.22	600.28	-6,028.11	6,020.92	2.68	600.28	-6,028.11			1.00	0.52	66.89
131	11914	90.64	268.11	6,049.01	598.40	-6,120.09	6,112.91	1.92	598.40	-6,120.09			1.00	0.52	66.87
132	12006	88.31	266.47	6,049.85	594.05	-6,211.97	6,204.84	3.10	594.05	-6,211.97			1.00	0.52	66.87
133	12098	90.81	269.10	6,050.56	590.50	-6,303.89	6,296.78	3.94	590.50	-6,303.89			1.00	0.52	66.90
134	12190	90.21	269.31	6,049.74	589.22	-6,395.87	6,388.78	0.69	589.22	-6,395.87			1.00	0.52	66.94
135	12282	89.62	268.43	6,049.88	587.41	-6,487.86	6,480.77	1.15	587.41	-6,487.86			1.00	0.52	66.94
136	12374	91.07	269.76	6,049.32	585.96	-6,579.84	6,572.77	2.14	585.96	-6,579.84			1.00	0.52	66.90
137	12465	89.66	269.04	6,048.74	585.00	-6,670.83	6,663.76	1.74	585.00	-6,670.83			1.00	0.52	66.86
138	12557	89.82	270.19	6,049.16	584.38	-6,762.82	6,755.76	1.26	584.38	-6,762.82			1.00	0.52	66.90
139	12649	90.13	270.98	6,049.20	585.32	-6,854.82	6,847.74	0.92	585.32	-6,854.82			1.00	0.52	66.92
140	12741	90.15	270.69	6,048.98	586.66	-6,946.81	6,939.71	0.32	586.66	-6,946.81			1.00	0.52	66.92
141	12834	89.70	270.13	6,049.10	587.33	-7,039.80	7,032.69	0.77	587.33	-7,039.80			1.00	0.52	66.92
142	12926	87.70	269.55	6,051.19	587.07	-7,131.78	7,124.66	2.26	587.07	-7,131.78			1.00	0.52	66.92
143	13018	90.24	269.99	6,052.84	586.70	-7,223.75	7,216.63	2.80	586.70	-7,223.75			1.00	0.52	66.91
144	13114	89.75	270.96	6,052.85	587.50	-7,319.75	7,312.61	1.13	587.50	-7,319.75			1.00	0.52	66.90
145	13209	87.59	271.69	6,055.05	589.70	-7,414.69	7,407.52	2.40	589.70	-7,414.69			1.00	0.52	66.92
146	13305	89.57	270.46	6,057.43	591.50	-7,510.64	7,503.44	2.43	591.50	-7,510.64			1.00	0.52	66.92
147	13399	89.59	266.43	6,058.12	588.95	-7,604.58	7,597.41	4.29	588.95	-7,604.58			1.00	0.52	66.94
148	13495	89.60	266.95	6,058.80	583.40	-7,700.42	7,693.30	0.54	583.40	-7,700.42			1.00	0.52	66.97
149	13591	88.75	270.96	6,060.18	581.65	-7,796.37	7,789.27	4.27	581.65	-7,796.37			1.00	0.52	66.89
150	13686	87.75	271.05	6,063.08	583.32	-7,891.31	7,884.19	1.06	583.32	-7,891.31			1.00	0.52	66.94
151	13781	89.56	270.52	6,065.31	584.62	-7,986.27	7,979.13	1.99	584.62	-7,986.27			1.00	0.52	66.90
152	13876	89.16	270.11	6,066.38	585.14	-8,081.26	8,074.11	0.60	585.14	-8,081.26			1.00	0.52	66.91
153	13971	89.83	268.79	6,067.21	584.23	-8,176.25	8,169.10	1.56	584.23	-8,176.25			1.00	0.52	66.89
154	14067	89.36	269.41	6,067.89	582.72	-8,272.24	8,265.10	0.81	582.72	-8,272.24			1.00	0.52	66.92
155	14163	89.14	268.68	6,069.15	581.12	-8,368.22	8,361.09	0.79	581.12	-8,368.22			1.00	0.52	66.89
156	14259	89.65	268.79	6,070.16	579.00	-8,464.19	8,457.07	0.54	579.00	-8,464.19			1.00	0.52	66.92
157	14355	89.26	269	6,071.07	577.15	-8,560.16	8,553.07	0.46	577.15	-8,560.16			1.00	0.52	66.93
158	14451	89.04	269.35	6,072.50	575.77	-8,656.14	8,649.06	0.43	575.77	-8,656.14			1.00	0.52	66.90
159	14546	88.57	269.60	6,074.48	574.90	-8,751.12	8,744.03	0.56	574.90	-8,751.12			1.00	0.52	66.90
160	14642	90.09	268.99	6,075.60	573.72	-8,847.10	8,840.02	1.71	573.72	-8,847.10			1.00	0.52	66.92
161	14738	89.62	269.55	6,075.85	572.49	-8,943.09	8,936.02	0.76	572.49	-8,943.09			1.00	0.52	66.92
162	14834	90.35	270.84	6,075.87	572.82	-9,039.09	9,032.01	1.54	572.82	-9,039.09			1.00	0.52	66.94
163	14930	90.37	271.24	6,075.27	574.56	-9,135.07	9,127.97	0.42	574.56	-9,135.07			1.00	0.52	66.92
164	15025	90.09	270.61	6,074.89	576.10	-9,230.06	9,222.93	0.73	576.10	-9,230.06			1.00	0.52	66.95
165	15120	90.23	270.04	6,074.62	576.64	-9,325.06	9,317.91	0.62	576.64	-9,325.06			1.00	0.52	66.95
166	15216	90.50	270.04	6,074.01	576.70	-9,421.05	9,413.91	0.28	576.70	-9,421.05			1.00	0.52	66.92
167	15311	90.32	269.85	6,073.33	576.61	-9,516.05	9,508.90	0.28	576.61	-9,516.05			1.00	0.52	66.91
168	15407	90.58	269.92	6,072.58	576.42	-9,612.05	9,604.89	0.28	576.42	-9,612.05			1.00	0.52	66.93

Svy	Depth	Inc	Azm	TVD	NS	EW	VS	DLS	Northing	Easting	A/B	L/R	GTot	HTot	DipA
169	15502	89.79	268.91	6,072.27	575.45	-9,707.04	9,699.89	1.35	575.45	-9,707.04			1.00	0.52	66.93
170	15598	89.80	267.96	6,072.61	572.83	-9,803.00	9,795.87	0.99	572.83	-9,803.00			1.00	0.52	66.94
171	15693	90.06	268.23	6,072.73	569.67	-9,897.95	9,890.85	0.39	569.67	-9,897.95			1.00	0.52	66.97
172	15787	90.51	267.82	6,072.26	566.43	-9,991.89	9,984.82	0.65	566.43	-9,991.89			1.00	0.52	66.90
173	15882	88.52	269.53	6,073.06	564.23	-10,086.86	10,079.81	2.76	564.23	-10,086.86			1.00	0.52	66.96
174	15976	88.13	268.83	6,075.81	562.89	-10,180.81	10,173.76	0.85	562.89	-10,180.81			1.00	0.52	66.96
175	16071	89.91	269	6,077.44	561.09	-10,275.77	10,268.74	1.88	561.09	-10,275.77			1.00	0.52	66.97
176	16167	90.07	268.50	6,077.45	559.00	-10,371.75	10,364.74	0.55	559.00	-10,371.75			1.00	0.52	66.90
177	16262	90.49	268.83	6,076.99	556.78	-10,466.72	10,459.73	0.56	556.78	-10,466.72			1.00	0.52	66.91
178	16356	90.94	269.23	6,075.82	555.19	-10,560.70	10,553.72	0.64	555.19	-10,560.70			1.00	0.52	66.94
179	16452	91.48	268.74	6,073.79	553.49	-10,656.66	10,649.70	0.76	553.49	-10,656.66			1.00	0.52	66.93
180	16546	89.86	269.15	6,072.69	551.76	-10,750.64	10,743.68	1.78	551.76	-10,750.64			1.00	0.52	66.89
181	16642	90.46	269.38	6,072.42	550.53	-10,846.63	10,839.68	0.67	550.53	-10,846.63			1.00	0.52	66.92
182	16737	91.02	270.05	6,071.20	550.06	-10,941.62	10,934.67	0.92	550.06	-10,941.62			1.00	0.52	66.92
183	16832	91.62	269.67	6,069.01	549.82	-11,036.59	11,029.64	0.75	549.82	-11,036.59			1.00	0.52	66.90
184	16926	92.49	270.47	6,065.64	549.94	-11,130.53	11,123.57	1.26	549.94	-11,130.53			1.00	0.52	66.96
185	17021	93.34	270.44	6,060.81	550.69	-11,225.40	11,218.43	0.90	550.69	-11,225.40			1.00	0.52	66.92
186	17046	93.51	270.33	6,059.31	550.86	-11,250.36	11,243.38	0.81	550.86	-11,250.36			1.00	0.52	66.94
PTB	17114	93.51	270.33	6,055.15	551.25	-11,318.23	11,311.25	0	551.25	-11,318.23			0	0	0