

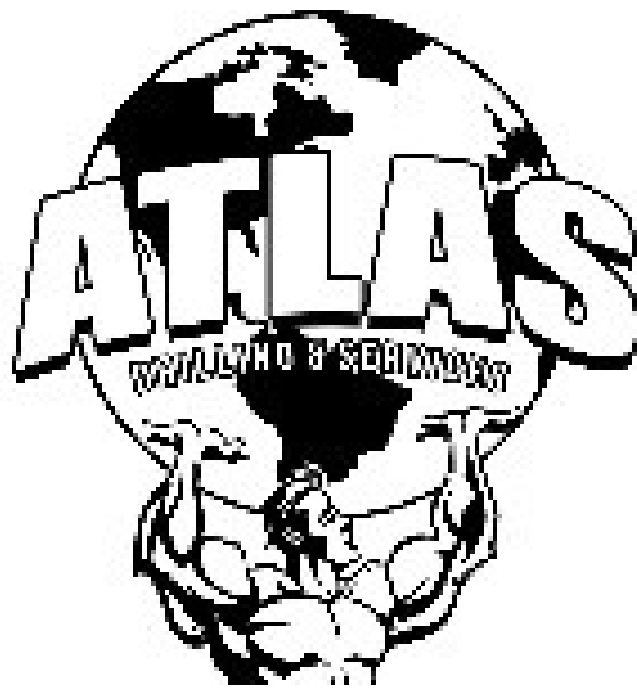


PROJECT DETAILS: Weld County, CO (NAD83)  
Geodetic System: US State Plane 1983  
Datum: North American Datum 1983  
Ellipsoid: GRS 1980  
Zone: Colorado Northern Zone  
System Datum: Mean Sea Level  
Local North: True

HighPoint Resources  
Project: Weld County, CO (NAD83)  
Site: Sec 04-T04N-R61W RSU  
Well: RSU Anschutz Fed 4-61-05-0808C  
Wellbore: Wellbore #1  
Design: Wellbore #1 (RSU Anschutz Fed 4-61-05-0808C/Wellbore #1)  
Cade 23

WELL DETAILS: RSU Anschutz Fed 4-61-05-0808C

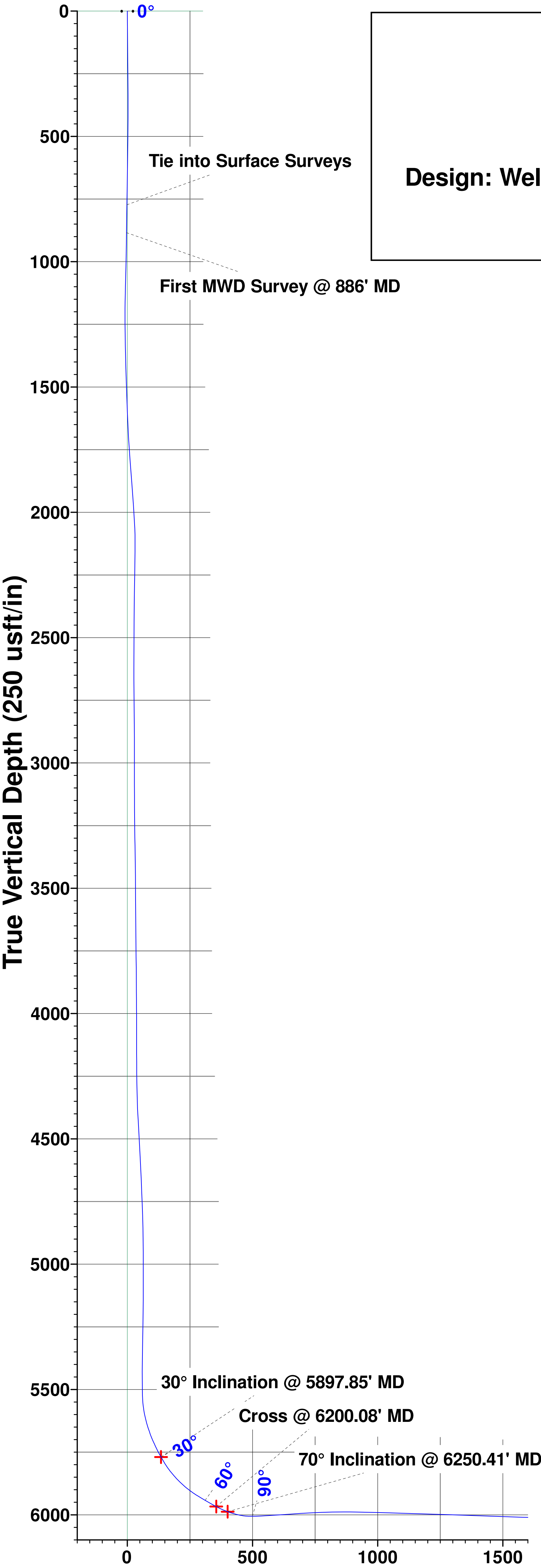
Ground Elevation:: 4501.50  
RKB Elevation: KB @ 4518.00usft (Cade 23)  
Rig Name: Cade 23



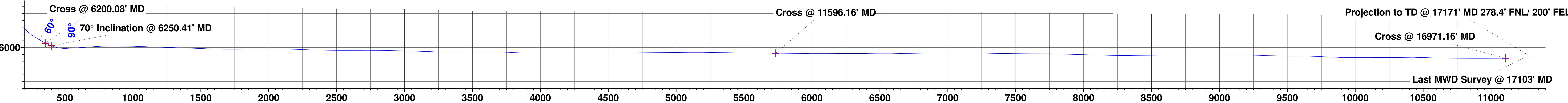
Northing	Easting	Latitude	Longitude
1371465.38	3355586.47	40.346052	-104.224227

ANNOTATIONS

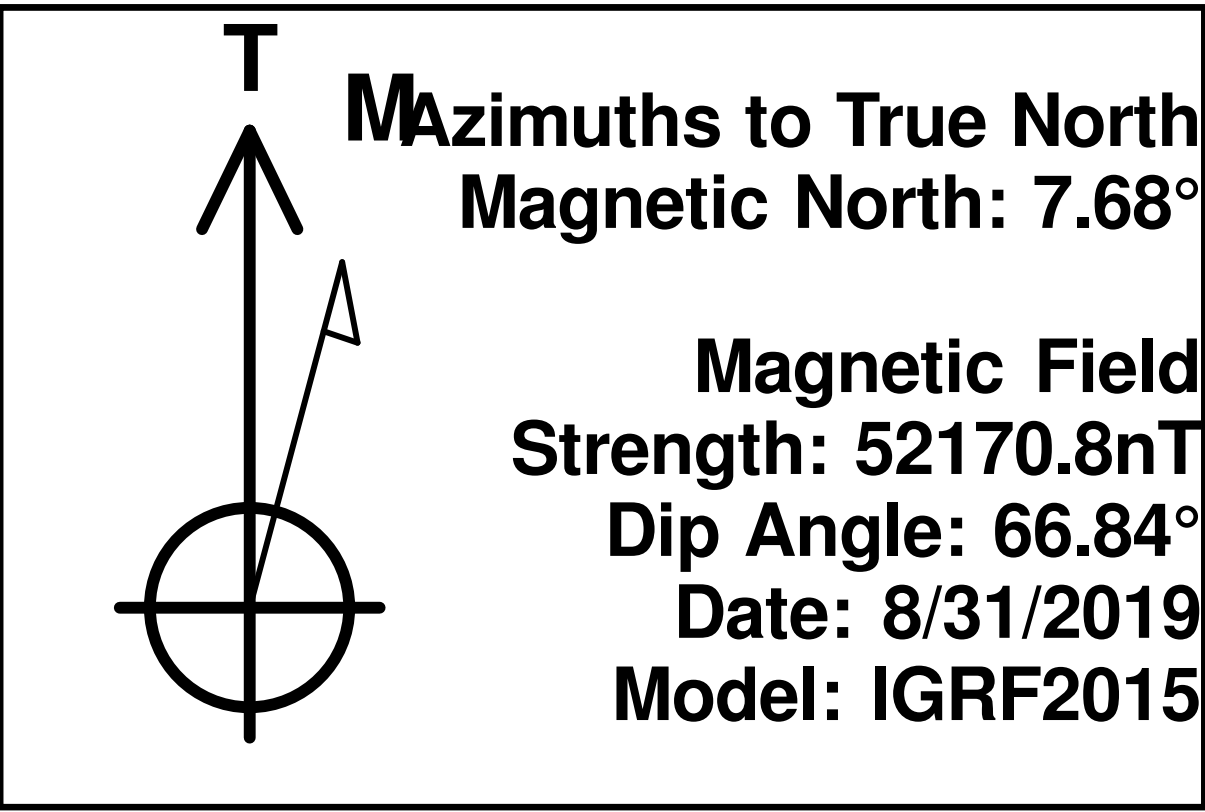
MD	Inc	Azi	TVD	+N/-S	+E/-W	VSect	Departure	Annotation
774.00	6.27	7.93	772.90	25.62	1.41	-1.71	31.37	Tie into Surface Surveys
886.00	6.41	5.11	884.21	37.91	2.81	-3.25	43.74	First MWD Survey @ 886' MD
5897.85	29.99	280.59	5769.51	987.05	-146.11	134.56	1078.52	30° Inclination @ 5897.85' MD
6200.08	62.46	275.95	5967.07	1008.50	-367.00	355.18	1299.64	Cross @ 6200.08' MD
6250.41	70.00	275.39	5987.66	1013.11	-412.65	400.77	1346.47	70° Inclination @ 6250.41' MD
11596.16	89.67	269.19	6041.31	1092.79	-5746.00	5732.83	6687.42	Cross @ 11596.16' MD
16971.16	90.64	270.58	6077.90	1025.45	-11119.00	11106.25	12061.69	Cross @ 16971.16' MD
17103.00	90.85	270.89	6076.12	1026.82	-11250.82	11238.05	12193.52	Last MWD Survey @ 17103' MD
17171.00	90.85	270.89	6075.11	1027.87	-11318.81	11306.01	12261.51	Projection to TD @ 17171' MD 278.4' FNL/ 200' FEL



Vertical Section at 269.33° (250 usft/in)



Vertical Section at 269.33° (250 usft/in)



# **HighPoint Resources**

**Weld County, CO (NAD83)**

**Sec 04-T04N-R61W RSU**

**RSU Anschutz Fed 4-61-05-0808C**

**Wellbore #1**

**Design: Wellbore #1**

## **Standard Survey Report**

**13 November, 2019**

## Survey Report

<b>Company:</b>	HighPoint Resources	<b>Local Co-ordinate Reference:</b>	Well RSU Anschutz Fed 4-61-05-0808C
<b>Project:</b>	Weld County, CO (NAD83)	<b>TVD Reference:</b>	KB @ 4518.00usft (Cade 23)
<b>Site:</b>	Sec 04-T04N-R61W RSU	<b>MD Reference:</b>	KB @ 4518.00usft (Cade 23)
<b>Well:</b>	RSU Anschutz Fed 4-61-05-0808C	<b>North Reference:</b>	True
<b>Wellbore:</b>	Wellbore #1	<b>Survey Calculation Method:</b>	Minimum Curvature
<b>Design:</b>	Wellbore #1	<b>Database:</b>	EDM 5000.15 Single User Db

<b>Project</b>	Weld County, CO (NAD83)		
<b>Map System:</b>	US State Plane 1983	<b>System Datum:</b>	Mean Sea Level
<b>Geo Datum:</b>	North American Datum 1983		
<b>Map Zone:</b>	Colorado Northern Zone		

Site		Sec 04-T04N-R61W RSU			
Site Position:		Northing:	1,372,892.85 usft	Latitude:	40.349985
From:	Lat/Long	Easting:	3,355,207.48 usft	Longitude:	-104.225513
Position Uncertainty:	0.00 usft	Slot Radius:	13-3/16 "	Grid Convergence:	0.82 °

Well	RSU Anschutz Fed 4-61-05-0808C					
Well Position	+N/-S	0.00 usft	Northing:	1,371,465.38 usft	Latitude:	40.346052
	+E/-W	0.00 usft	Easting:	3,355,586.47 usft	Longitude:	-104.224227
Position Uncertainty		0.00 usft	Wellhead Elevation:	usft	Ground Level:	4,501.50 usft

<b>Wellbore</b>	Wellbore #1				
<b>Magnetics</b>	<b>Model Name</b>	<b>Sample Date</b>	<b>Declination (°)</b>	<b>Dip Angle (°)</b>	<b>Field Strength (nT)</b>
	IGRF2015	8/31/2019	7.68	66.84	52,170.78741516

<b>Design</b>	Wellbore #1				
<b>Audit Notes:</b>					
<b>Version:</b>	1.0	<b>Phase:</b>	ACTUAL	<b>Tie On Depth:</b>	0.00
<b>Vertical Section:</b>	<b>Depth From (TVD) (usft)</b>	<b>+N/-S (usft)</b>	<b>+E/-W (usft)</b>	<b>Direction (°)</b>	
	0.00	0.00	0.00	269.33	

<b>Survey Program</b>	<b>Date</b>	11/13/2019			
<b>From (usft)</b>	<b>To (usft)</b>	<b>Survey (Wellbore)</b>	<b>Tool Name</b>	<b>Description</b>	
149.00	774.00	Surface Surveys (Wellbore #1)	MWD	MWD - Standard	
886.00	17,171.00	Atlas MWD Surveys (Wellbore #1)	MWD	MWD - Standard	

<b>Survey</b>										
<b>Measured Depth (usft)</b>	<b>Inclination (°)</b>	<b>Azimuth (°)</b>	<b>Vertical Depth (usft)</b>	<b>+N/-S (usft)</b>	<b>+E/-W (usft)</b>	<b>Vertical Section (usft)</b>	<b>Dogleg Rate (°/100usft)</b>	<b>Build Rate (°/100usft)</b>	<b>Turn Rate (°/100usft)</b>	
0.00	0.00	0.00	0.00	0.00	0.00	0.00	0.00	0.00	0.00	
149.00	0.93	235.80	148.99	-0.68	-1.00	1.01	0.62	0.62	0.00	
242.00	0.84	235.14	241.98	-1.49	-2.18	2.20	0.10	-0.10	-0.71	
334.00	0.62	332.57	333.98	-1.44	-2.97	2.98	1.20	-0.24	105.90	
426.00	1.64	13.17	425.96	0.29	-2.90	2.89	1.34	1.11	44.13	
517.00	3.05	15.69	516.88	3.89	-1.94	1.90	1.55	1.55	2.77	
610.00	4.46	8.77	609.68	9.84	-0.72	0.61	1.59	1.52	-7.44	
701.00	5.88	7.12	700.31	17.96	0.39	-0.60	1.57	1.56	-1.81	
774.00	6.27	7.93	772.90	25.62	1.41	-1.71	0.55	0.53	1.11	
Tie into Surface Surveys										

## Survey Report

<b>Company:</b>	HighPoint Resources	<b>Local Co-ordinate Reference:</b>	Well RSU Anschutz Fed 4-61-05-0808C
<b>Project:</b>	Weld County, CO (NAD83)	<b>TVD Reference:</b>	KB @ 4518.00usft (Cade 23)
<b>Site:</b>	Sec 04-T04N-R61W RSU	<b>MD Reference:</b>	KB @ 4518.00usft (Cade 23)
<b>Well:</b>	RSU Anschutz Fed 4-61-05-0808C	<b>North Reference:</b>	True
<b>Wellbore:</b>	Wellbore #1	<b>Survey Calculation Method:</b>	Minimum Curvature
<b>Design:</b>	Wellbore #1	<b>Database:</b>	EDM 5000.15 Single User Db

Survey									
Measured Depth (usft)	Inclination (°)	Azimuth (°)	Vertical Depth (usft)	+N/-S (usft)	+E/-W (usft)	Vertical Section (usft)	Dogleg Rate (°/100usft)	Build Rate (°/100usft)	Turn Rate (°/100usft)
886.00	6.41	5.11	884.21	37.91	2.81	-3.25	0.30	0.13	-2.52
First MWD Survey @ 886' MD									
978.00	8.22	7.31	975.46	49.55	4.10	-4.68	1.99	1.97	2.39
1,070.00	10.08	7.18	1,066.29	64.06	5.95	-6.69	2.02	2.02	-0.14
1,162.00	12.42	4.32	1,156.51	81.92	7.70	-8.65	2.61	2.54	-3.11
1,254.00	14.23	358.24	1,246.04	103.09	8.09	-9.30	2.49	1.97	-6.61
1,346.00	14.72	354.36	1,335.12	126.02	6.60	-8.07	1.18	0.53	-4.22
1,438.00	13.88	353.34	1,424.27	148.61	4.17	-5.91	0.95	-0.91	-1.11
1,530.00	13.39	350.13	1,513.67	170.07	1.06	-3.05	0.98	-0.53	-3.49
1,625.00	15.25	351.63	1,605.72	193.27	-2.64	0.38	2.00	1.96	1.58
1,721.00	15.02	347.66	1,698.39	217.91	-7.14	4.59	1.11	-0.24	-4.14
1,816.00	14.63	340.70	1,790.24	241.26	-13.73	10.91	1.92	-0.41	-7.33
1,911.00	15.11	344.49	1,882.06	264.52	-21.01	17.92	1.14	0.51	3.99
2,006.00	14.72	342.15	1,973.86	287.94	-28.02	24.65	0.76	-0.41	-2.46
2,101.00	14.41	351.10	2,065.82	311.11	-33.55	29.91	2.39	-0.33	9.42
2,197.00	15.51	2.33	2,158.58	335.74	-34.88	30.95	3.22	1.15	11.70
2,292.00	15.91	3.04	2,250.03	361.43	-33.67	29.44	0.47	0.42	0.75
2,388.00	15.73	1.98	2,342.40	387.58	-32.52	27.99	0.35	-0.19	-1.10
2,485.00	15.38	0.75	2,435.84	413.58	-31.90	27.06	0.50	-0.36	-1.27
2,580.00	14.98	0.22	2,527.53	438.46	-31.69	26.56	0.45	-0.42	-0.56
2,676.00	15.11	359.78	2,620.24	463.38	-31.69	26.27	0.18	0.14	-0.46
2,771.00	14.01	357.35	2,712.19	487.25	-32.27	26.57	1.32	-1.16	-2.56
2,866.00	12.64	356.16	2,804.63	509.11	-33.49	27.54	1.47	-1.44	-1.25
2,962.00	12.68	359.38	2,898.29	530.12	-34.31	28.11	0.74	0.04	3.35
3,058.00	12.64	359.07	2,991.96	551.16	-34.60	28.15	0.08	-0.04	-0.32
3,154.00	15.29	358.68	3,085.11	574.32	-35.06	28.34	2.76	2.76	-0.41
3,250.00	16.70	358.24	3,177.39	600.76	-35.77	28.75	1.47	1.47	-0.46
3,345.00	18.43	357.31	3,267.96	629.41	-36.90	29.54	1.84	1.82	-0.98
3,441.00	15.78	354.40	3,359.71	657.56	-38.88	31.19	2.90	-2.76	-3.03
3,535.00	14.80	358.41	3,450.38	682.29	-40.46	32.48	1.53	-1.04	4.27
3,631.00	14.85	358.37	3,543.19	706.84	-41.15	32.89	0.05	0.05	-0.04
3,727.00	14.63	357.18	3,636.03	731.25	-42.10	33.55	0.39	-0.23	-1.24
3,822.00	13.26	356.25	3,728.23	754.10	-43.40	34.58	1.46	-1.44	-0.98
3,917.00	12.15	356.43	3,820.90	774.95	-44.74	35.67	1.17	-1.17	0.19
4,012.00	11.67	357.66	3,913.85	794.53	-45.75	36.46	0.57	-0.51	1.29
4,108.00	13.74	358.99	4,007.50	815.63	-46.35	36.81	2.18	2.16	1.39
4,203.00	13.83	358.99	4,099.76	838.27	-46.75	36.95	0.09	0.09	0.00
4,299.00	11.75	357.22	4,193.38	859.50	-47.43	37.37	2.20	-2.17	-1.84
4,395.00	10.74	357.22	4,287.53	878.20	-48.34	38.06	1.05	-1.05	0.00
4,491.00	10.12	341.40	4,381.96	895.13	-51.46	40.99	3.04	-0.65	-16.48
4,587.00	9.10	339.24	4,476.62	910.23	-56.84	46.19	1.13	-1.06	-2.25
4,683.00	7.82	338.80	4,571.57	923.41	-61.89	51.09	1.34	-1.33	-0.46
4,778.00	8.13	340.39	4,665.65	935.77	-66.49	55.54	0.40	0.33	1.67

# Survey Report

<b>Company:</b>	HighPoint Resources	<b>Local Co-ordinate Reference:</b>	Well RSU Anschutz Fed 4-61-05-0808C
<b>Project:</b>	Weld County, CO (NAD83)	<b>TVD Reference:</b>	KB @ 4518.00usft (Cade 23)
<b>Site:</b>	Sec 04-T04N-R61W RSU	<b>MD Reference:</b>	KB @ 4518.00usft (Cade 23)
<b>Well:</b>	RSU Anschutz Fed 4-61-05-0808C	<b>North Reference:</b>	True
<b>Wellbore:</b>	Wellbore #1	<b>Survey Calculation Method:</b>	Minimum Curvature
<b>Design:</b>	Wellbore #1	<b>Database:</b>	EDM 5000.15 Single User Db

Survey									
Measured Depth (usft)	Inclination (°)	Azimuth (°)	Vertical Depth (usft)	+N/-S (usft)	+E/-W (usft)	Vertical Section (usft)	Dogleg Rate (°/100usft)	Build Rate (°/100usft)	Turn Rate (°/100usft)
4,874.00	6.72	341.23	4,760.84	947.48	-70.57	59.49	1.47	-1.47	0.88
4,970.00	5.39	341.49	4,856.31	957.07	-73.81	62.61	1.39	-1.39	0.27
5,066.00	4.46	0.22	4,951.96	965.08	-75.23	63.94	1.92	-0.97	19.51
5,161.00	3.58	2.33	5,046.72	971.74	-75.09	63.72	0.94	-0.93	2.22
5,256.00	2.78	359.12	5,141.57	977.01	-75.01	63.58	0.86	-0.84	-3.38
5,352.00	1.81	50.87	5,237.51	980.29	-73.87	62.40	2.28	-1.01	53.91
5,447.00	0.80	77.88	5,332.48	981.38	-72.05	60.57	1.22	-1.06	28.43
5,543.00	0.66	131.95	5,428.47	981.15	-70.99	59.51	0.70	-0.15	56.32
5,638.00	1.55	261.73	5,523.46	980.60	-71.85	60.38	2.14	0.94	136.61
5,734.00	13.92	267.24	5,618.41	979.85	-84.72	73.26	12.89	12.89	5.74
5,829.00	23.95	277.90	5,708.18	981.96	-115.32	103.83	11.13	10.56	11.22
5,897.85	29.99	280.59	5,769.51	987.05	-146.11	134.56	8.95	8.78	3.91
30° Inclination @ 5897.85' MD									
5,923.00	32.21	281.34	5,791.04	989.52	-158.86	147.28	8.95	8.82	2.98
6,018.00	45.03	273.49	5,865.16	996.58	-217.51	205.84	14.42	13.49	-8.26
6,113.00	58.24	274.33	5,923.99	1,001.70	-291.65	279.92	13.92	13.91	0.88
6,200.08	62.46	275.95	5,967.07	1,008.50	-367.00	355.18	5.10	4.84	1.86
Cross @ 6200.08' MD									
6,208.00	62.84	276.09	5,970.70	1,009.24	-374.00	362.17	5.10	4.85	1.78
6,250.41	70.00	275.39	5,987.66	1,013.11	-412.65	400.77	16.95	16.88	-1.66
70° Inclination @ 6250.41' MD									
6,303.00	78.88	274.60	6,001.75	1,017.51	-463.07	451.14	16.95	16.89	-1.50
6,339.00	87.72	275.43	6,005.95	1,020.64	-498.65	486.68	24.66	24.56	2.31
6,365.00	92.27	275.26	6,005.95	1,023.06	-524.53	512.53	17.51	17.50	-0.65
6,387.00	93.28	275.70	6,004.89	1,025.16	-546.40	534.38	5.01	4.59	2.00
6,482.00	93.70	274.24	5,999.10	1,033.37	-640.87	628.74	1.60	0.44	-1.54
6,546.00	94.12	274.33	5,994.74	1,038.14	-704.54	692.35	0.67	0.66	0.14
6,578.00	92.89	274.51	5,992.78	1,040.60	-736.38	724.16	3.88	-3.84	0.56
6,631.00	92.14	274.95	5,990.46	1,044.97	-789.15	776.88	1.64	-1.42	0.83
6,673.00	91.30	275.74	5,989.20	1,048.88	-830.95	818.63	2.74	-2.00	1.88
6,719.00	90.15	275.83	5,988.61	1,053.52	-876.71	864.33	2.51	-2.50	0.20
6,769.00	89.00	275.83	5,988.98	1,058.59	-926.45	914.01	2.30	-2.30	0.00
6,866.00	88.51	276.76	5,991.09	1,069.23	-1,022.84	1,010.27	1.08	-0.51	0.96
6,961.00	88.20	276.62	5,993.82	1,080.29	-1,117.15	1,104.45	0.36	-0.33	-0.15
7,057.00	88.11	277.15	5,996.91	1,091.79	-1,212.41	1,199.56	0.56	-0.09	0.55
7,152.00	88.29	277.37	5,999.89	1,103.79	-1,306.60	1,293.61	0.30	0.19	0.23
7,247.00	87.94	277.20	6,003.02	1,115.83	-1,400.79	1,387.64	0.41	-0.37	-0.18
7,343.00	87.67	277.37	6,006.70	1,128.00	-1,495.94	1,482.65	0.33	-0.28	0.18
7,439.00	88.56	276.23	6,009.85	1,139.36	-1,591.21	1,577.78	1.51	0.93	-1.19
7,535.00	89.17	274.90	6,011.76	1,148.66	-1,686.74	1,673.19	1.52	0.64	-1.39
7,631.00	90.63	273.45	6,011.92	1,155.65	-1,782.48	1,768.84	2.14	1.52	-1.51
7,726.00	90.46	271.73	6,011.02	1,159.94	-1,877.37	1,863.68	1.82	-0.18	-1.81
7,794.00	91.07	270.28	6,010.11	1,161.14	-1,945.35	1,931.64	2.31	0.90	-2.13
7,822.00	90.23	269.97	6,009.79	1,161.20	-1,973.35	1,959.64	3.20	-3.00	-1.11



# Survey Report

<b>Company:</b>	HighPoint Resources	<b>Local Co-ordinate Reference:</b>	Well RSU Anschutz Fed 4-61-05-0808C
<b>Project:</b>	Weld County, CO (NAD83)	<b>TVD Reference:</b>	KB @ 4518.00usft (Cade 23)
<b>Site:</b>	Sec 04-T04N-R61W RSU	<b>MD Reference:</b>	KB @ 4518.00usft (Cade 23)
<b>Well:</b>	RSU Anschutz Fed 4-61-05-0808C	<b>North Reference:</b>	True
<b>Wellbore:</b>	Wellbore #1	<b>Survey Calculation Method:</b>	Minimum Curvature
<b>Design:</b>	Wellbore #1	<b>Database:</b>	EDM 5000.15 Single User Db

Survey									
Measured Depth (usft)	Inclination (°)	Azimuth (°)	Vertical Depth (usft)	+N/-S (usft)	+E/-W (usft)	Vertical Section (usft)	Dogleg Rate (°/100usft)	Build Rate (°/100usft)	Turn Rate (°/100usft)
7,916.00	89.84	268.29	6,009.74	1,159.77	-2,067.34	2,053.63	1.83	-0.41	-1.79
8,012.00	88.16	267.06	6,011.41	1,155.88	-2,163.24	2,149.57	2.17	-1.75	-1.28
8,108.00	88.16	267.28	6,014.49	1,151.14	-2,259.07	2,245.46	0.23	0.00	0.23
8,203.00	87.85	267.85	6,017.80	1,147.11	-2,353.93	2,340.35	0.68	-0.33	0.60
8,298.00	89.57	268.12	6,019.94	1,143.77	-2,448.84	2,435.30	1.83	1.81	0.28
8,393.00	89.75	268.38	6,020.50	1,140.87	-2,543.80	2,530.28	0.33	0.19	0.27
8,489.00	90.19	268.65	6,020.55	1,138.38	-2,639.76	2,626.27	0.54	0.46	0.28
8,584.00	90.06	268.96	6,020.35	1,136.40	-2,734.74	2,721.27	0.35	-0.14	0.33
8,680.00	89.57	268.43	6,020.66	1,134.21	-2,830.72	2,817.26	0.75	-0.51	-0.55
8,776.00	88.42	267.90	6,022.34	1,131.14	-2,926.65	2,913.22	1.32	-1.20	-0.55
8,872.00	88.69	268.03	6,024.76	1,127.73	-3,022.56	3,009.17	0.31	0.28	0.14
8,968.00	88.42	268.43	6,027.18	1,124.77	-3,118.48	3,105.12	0.50	-0.28	0.42
9,064.00	87.80	268.74	6,030.35	1,122.40	-3,214.40	3,201.06	0.72	-0.65	0.32
9,159.00	89.17	269.09	6,032.86	1,120.60	-3,309.35	3,296.02	1.49	1.44	0.37
9,255.00	90.06	269.13	6,033.51	1,119.11	-3,405.33	3,392.01	0.93	0.93	0.04
9,351.00	90.63	269.22	6,032.93	1,117.72	-3,501.32	3,488.01	0.60	0.59	0.09
9,447.00	90.94	269.44	6,031.61	1,116.60	-3,597.30	3,584.00	0.40	0.32	0.23
9,542.00	88.56	269.35	6,032.03	1,115.60	-3,692.29	3,678.99	2.51	-2.51	-0.09
9,637.00	87.19	269.66	6,035.55	1,114.78	-3,787.22	3,773.93	1.48	-1.44	0.33
9,733.00	88.16	268.34	6,039.44	1,113.10	-3,883.12	3,869.84	1.71	1.01	-1.38
9,828.00	90.10	268.74	6,040.89	1,110.68	-3,978.08	3,964.82	2.09	2.04	0.42
9,916.00	90.59	270.15	6,040.36	1,109.83	-4,066.07	4,052.81	1.70	0.56	1.60
10,011.00	90.19	270.72	6,039.71	1,110.55	-4,161.06	4,147.79	0.73	-0.42	0.60
10,106.00	90.32	269.84	6,039.29	1,111.02	-4,256.06	4,242.78	0.94	0.14	-0.93
10,202.00	89.62	270.45	6,039.34	1,111.26	-4,352.06	4,338.77	0.97	-0.73	0.64
10,297.00	90.23	269.62	6,039.46	1,111.32	-4,447.06	4,433.76	1.08	0.64	-0.87
10,392.00	89.44	269.48	6,039.73	1,110.57	-4,542.05	4,528.76	0.84	-0.83	-0.15
10,486.00	90.81	268.74	6,039.53	1,109.11	-4,636.04	4,622.75	1.66	1.46	-0.79
10,582.00	90.19	268.96	6,038.69	1,107.19	-4,732.02	4,718.75	0.69	-0.65	0.23
10,678.00	90.68	270.01	6,037.96	1,106.32	-4,828.01	4,814.74	1.21	0.51	1.09
10,773.00	90.63	268.78	6,036.88	1,105.32	-4,922.99	4,909.73	1.30	-0.05	-1.29
10,869.00	90.59	268.82	6,035.86	1,103.31	-5,018.97	5,005.72	0.06	-0.04	0.04
10,965.00	90.15	269.09	6,035.24	1,101.56	-5,114.95	5,101.72	0.54	-0.46	0.28
11,057.00	89.62	269.22	6,035.42	1,100.20	-5,206.94	5,193.72	0.59	-0.58	0.14
11,149.00	89.26	269.70	6,036.32	1,099.34	-5,298.93	5,285.71	0.65	-0.39	0.52
11,241.00	88.69	269.70	6,037.96	1,098.85	-5,390.91	5,377.70	0.62	-0.62	0.00
11,332.00	89.57	268.56	6,039.35	1,097.47	-5,481.89	5,468.68	1.58	0.97	-1.25
11,424.00	89.13	269.13	6,040.39	1,095.62	-5,573.86	5,560.67	0.78	-0.48	0.62
11,517.00	90.01	268.96	6,041.09	1,094.07	-5,666.85	5,653.67	0.96	0.95	-0.18
11,596.16	89.67	269.19	6,041.31	1,092.79	-5,746.00	5,732.83	0.52	-0.43	0.29
Cross @ 11596.16' MD									
11,608.00	89.62	269.22	6,041.38	1,092.62	-5,757.84	5,744.67	0.52	-0.43	0.29
11,700.00	89.31	268.65	6,042.24	1,090.91	-5,849.82	5,836.66	0.71	-0.34	-0.62
11,792.00	88.91	268.91	6,043.67	1,088.95	-5,941.78	5,928.64	0.52	-0.43	0.28

## Survey Report

<b>Company:</b>	HighPoint Resources	<b>Local Co-ordinate Reference:</b>	Well RSU Anschutz Fed 4-61-05-0808C
<b>Project:</b>	Weld County, CO (NAD83)	<b>TVD Reference:</b>	KB @ 4518.00usft (Cade 23)
<b>Site:</b>	Sec 04-T04N-R61W RSU	<b>MD Reference:</b>	KB @ 4518.00usft (Cade 23)
<b>Well:</b>	RSU Anschutz Fed 4-61-05-0808C	<b>North Reference:</b>	True
<b>Wellbore:</b>	Wellbore #1	<b>Survey Calculation Method:</b>	Minimum Curvature
<b>Design:</b>	Wellbore #1	<b>Database:</b>	EDM 5000.15 Single User Db

Survey									
Measured Depth (usft)	Inclination (°)	Azimuth (°)	Vertical Depth (usft)	+N/-S (usft)	+E/-W (usft)	Vertical Section (usft)	Dogleg Rate (°/100usft)	Build Rate (°/100usft)	Turn Rate (°/100usft)
11,884.00	90.19	271.56	6,044.39	1,089.33	-6,033.77	6,020.62	3.20	1.39	2.88
11,976.00	89.93	269.53	6,044.30	1,090.21	-6,125.76	6,112.59	2.22	-0.28	-2.21
12,068.00	90.32	268.12	6,044.10	1,088.32	-6,217.74	6,204.59	1.59	0.42	-1.53
12,161.00	89.97	268.03	6,043.86	1,085.20	-6,310.69	6,297.56	0.39	-0.38	-0.10
12,252.00	89.66	268.25	6,044.15	1,082.24	-6,401.64	6,388.54	0.42	-0.34	0.24
12,345.00	88.91	267.99	6,045.31	1,079.19	-6,494.58	6,481.52	0.85	-0.81	-0.28
12,440.00	91.16	267.02	6,045.26	1,075.06	-6,589.48	6,576.46	2.58	2.37	-1.02
12,536.00	90.99	266.84	6,043.46	1,069.92	-6,685.33	6,672.36	0.26	-0.18	-0.19
12,631.00	90.90	269.66	6,041.89	1,067.02	-6,780.26	6,767.32	2.97	-0.09	2.97
12,726.00	90.54	269.75	6,040.69	1,066.53	-6,875.25	6,862.31	0.39	-0.38	0.09
12,822.00	90.54	270.06	6,039.79	1,066.37	-6,971.25	6,958.30	0.32	0.00	0.32
12,918.00	90.59	270.98	6,038.84	1,067.24	-7,067.24	7,054.27	0.96	0.05	0.96
13,014.00	89.62	270.67	6,038.67	1,068.62	-7,163.23	7,150.24	1.06	-1.01	-0.32
13,110.00	88.56	269.92	6,040.19	1,069.11	-7,259.21	7,246.21	1.35	-1.10	-0.78
13,205.00	88.29	270.06	6,042.80	1,069.10	-7,354.17	7,341.17	0.32	-0.28	0.15
13,301.00	90.19	269.18	6,044.08	1,068.46	-7,450.16	7,437.16	2.18	1.98	-0.92
13,395.00	89.22	267.28	6,044.56	1,065.56	-7,544.11	7,531.13	2.27	-1.03	-2.02
13,491.00	89.62	268.47	6,045.53	1,062.00	-7,640.03	7,627.09	1.31	0.42	1.24
13,587.00	90.01	270.54	6,045.84	1,061.17	-7,736.02	7,723.09	2.19	0.41	2.16
13,682.00	88.47	269.13	6,047.10	1,060.90	-7,831.01	7,818.07	2.20	-1.62	-1.48
13,777.00	88.60	269.04	6,049.53	1,059.38	-7,925.97	7,913.04	0.17	0.14	-0.09
13,872.00	88.07	268.82	6,052.29	1,057.61	-8,020.91	8,007.99	0.60	-0.56	-0.23
13,968.00	89.09	268.16	6,054.67	1,055.08	-8,116.85	8,103.95	1.27	1.06	-0.69
14,063.00	88.03	267.99	6,057.06	1,051.89	-8,211.76	8,198.90	1.13	-1.12	-0.18
14,159.00	90.41	268.34	6,058.36	1,048.81	-8,307.70	8,294.86	2.51	2.48	0.36
14,255.00	90.63	268.51	6,057.49	1,046.18	-8,403.66	8,390.85	0.29	0.23	0.18
14,351.00	90.59	268.43	6,056.47	1,043.61	-8,499.62	8,486.83	0.09	-0.04	-0.08
14,447.00	90.72	268.34	6,055.37	1,040.91	-8,595.57	8,582.81	0.16	0.14	-0.09
14,543.00	90.19	267.99	6,054.61	1,037.83	-8,691.52	8,678.79	0.66	-0.55	-0.36
14,638.00	89.79	269.26	6,054.63	1,035.55	-8,786.49	8,773.78	1.40	-0.42	1.34
14,734.00	89.62	270.67	6,055.12	1,035.49	-8,882.49	8,869.77	1.48	-0.18	1.47
14,830.00	90.59	270.98	6,054.95	1,036.88	-8,978.47	8,965.74	1.06	1.01	0.32
14,926.00	90.10	270.72	6,054.37	1,038.30	-9,074.46	9,061.70	0.58	-0.51	-0.27
15,021.00	90.06	271.47	6,054.24	1,040.12	-9,169.44	9,156.65	0.79	-0.04	0.79
15,116.00	87.89	269.53	6,055.94	1,040.95	-9,264.41	9,251.61	3.06	-2.28	-2.04
15,212.00	88.60	268.03	6,058.88	1,038.90	-9,360.34	9,347.56	1.73	0.74	-1.56
15,307.00	88.60	268.96	6,061.20	1,036.41	-9,455.28	9,442.52	0.98	0.00	0.98
15,403.00	90.50	269.00	6,061.95	1,034.70	-9,551.26	9,538.51	1.98	1.98	0.04
15,498.00	88.78	268.78	6,062.55	1,032.86	-9,646.24	9,633.50	1.83	-1.81	-0.23
15,594.00	87.85	268.69	6,065.37	1,030.74	-9,742.17	9,729.45	0.97	-0.97	-0.09
15,689.00	86.92	268.87	6,069.70	1,028.72	-9,837.05	9,824.35	1.00	-0.98	0.19
15,783.00	89.79	268.78	6,072.40	1,026.79	-9,930.98	9,918.29	3.05	3.05	-0.10
15,878.00	90.15	269.35	6,072.45	1,025.24	-10,025.97	10,013.29	0.71	0.38	0.60

## Survey Report

<b>Company:</b>	HighPoint Resources	<b>Local Co-ordinate Reference:</b>	Well RSU Anschutz Fed 4-61-05-0808C
<b>Project:</b>	Weld County, CO (NAD83)	<b>TVD Reference:</b>	KB @ 4518.00usft (Cade 23)
<b>Site:</b>	Sec 04-T04N-R61W RSU	<b>MD Reference:</b>	KB @ 4518.00usft (Cade 23)
<b>Well:</b>	RSU Anschutz Fed 4-61-05-0808C	<b>North Reference:</b>	True
<b>Wellbore:</b>	Wellbore #1	<b>Survey Calculation Method:</b>	Minimum Curvature
<b>Design:</b>	Wellbore #1	<b>Database:</b>	EDM 5000.15 Single User Db

Survey										
Measured Depth (usft)	Inclination (°)	Azimuth (°)	Vertical Depth (usft)	+N/-S (usft)	+E/-W (usft)	Vertical Section (usft)	Dogleg Rate (°/100usft)	Build Rate (°/100usft)	Turn Rate (°/100usft)	
15,973.00	89.93	270.19	6,072.39	1,024.86	-10,120.97	10,108.29	0.91	-0.23	0.88	
16,068.00	89.84	270.01	6,072.58	1,025.03	-10,215.96	10,203.28	0.21	-0.09	-0.19	
16,163.00	90.23	269.13	6,072.52	1,024.31	-10,310.96	10,298.28	1.01	0.41	-0.93	
16,258.00	90.63	269.92	6,071.81	1,023.53	-10,405.95	10,393.27	0.93	0.42	0.83	
16,352.00	88.16	269.44	6,072.80	1,023.00	-10,499.94	10,487.26	2.68	-2.63	-0.51	
16,448.00	88.33	269.40	6,075.74	1,022.03	-10,595.89	10,583.21	0.18	0.18	-0.04	
16,543.00	89.35	270.50	6,077.66	1,021.95	-10,690.87	10,678.19	1.58	1.07	1.16	
16,638.00	89.66	270.45	6,078.48	1,022.74	-10,785.86	10,773.16	0.33	0.33	-0.05	
16,733.00	89.79	270.32	6,078.94	1,023.37	-10,880.86	10,868.15	0.19	0.14	-0.14	
16,828.00	90.19	270.37	6,078.95	1,023.95	-10,975.86	10,963.13	0.42	0.42	0.05	
16,922.00	90.50	270.76	6,078.39	1,024.87	-11,069.85	11,057.11	0.53	0.33	0.41	
16,971.16	90.64	270.58	6,077.90	1,025.45	-11,119.00	11,106.25	0.46	0.28	-0.36	
Cross @ 16971.16' MD										
17,018.00	90.77	270.41	6,077.32	1,025.85	-11,165.84	11,153.08	0.46	0.28	-0.36	
17,103.00	90.85	270.89	6,076.12	1,026.82	-11,250.82	11,238.05	0.57	0.09	0.56	
Last MWD Survey @ 17103' MD										
17,171.00	90.85	270.89	6,075.11	1,027.87	-11,318.81	11,306.01	0.00	0.00	0.00	
Projection to TD @ 17171' MD 278.4' FNL/ 200' FEL										

Design Targets										
Target Name - hit/miss target - Shape	Dip Angle (°)	Dip Dir. (°)	TVD (usft)	+N/-S (usft)	+E/-W (usft)	Northing (usft)	Easting (usft)	Latitude Longitude		
30° Inclination @ 5897.8 - actual wellpath misses target center by 0.05usft at 5897.85usft MD (5769.51 TVD, 987.05 N, -146.11 E) - Point	0.00	0.00	5,769.51	987.00	-146.12	1,372,450.17	3,355,426.17	40.348761 -104.224752		
Cross @ 6200.08' MD - actual wellpath hits target center - Point	0.00	0.00	5,967.06	1,008.50	-367.00	1,372,468.49	3,355,205.01	40.348820 -104.225544		
70° Inclination @ 6250.4 - actual wellpath misses target center by 0.01usft at 6250.41usft MD (5987.66 TVD, 1013.11 N, -412.64 E) - Point	0.00	0.00	5,987.66	1,013.13	-412.64	1,372,472.46	3,355,159.31	40.348833 -104.225708		
Cross @ 11596.16' MD - actual wellpath hits target center - Point	0.00	0.00	6,041.31	1,092.79	-5,746.00	1,372,475.38	3,349,825.35	40.349050 -104.244843		
Cross @ 16971.16' MD - actual wellpath hits target center - Point	0.00	0.00	6,077.90	1,025.45	-11,119.00	1,372,330.75	3,344,453.88	40.348860 -104.264120		



## Survey Report

<b>Company:</b>	HighPoint Resources	<b>Local Co-ordinate Reference:</b>	Well RSU Anschutz Fed 4-61-05-0808C
<b>Project:</b>	Weld County, CO (NAD83)	<b>TVD Reference:</b>	KB @ 4518.00usft (Cade 23)
<b>Site:</b>	Sec 04-T04N-R61W RSU	<b>MD Reference:</b>	KB @ 4518.00usft (Cade 23)
<b>Well:</b>	RSU Anschutz Fed 4-61-05-0808C	<b>North Reference:</b>	True
<b>Wellbore:</b>	Wellbore #1	<b>Survey Calculation Method:</b>	Minimum Curvature
<b>Design:</b>	Wellbore #1	<b>Database:</b>	EDM 5000.15 Single User Db

### Design Annotations

Measured Depth (usft)	Vertical Depth (usft)	Local Coordinates		Comment
		+N/-S (usft)	+E/-W (usft)	
774.00	772.90	25.62	1.41	Tie into Surface Surveys
886.00	884.21	37.91	2.81	First MWD Survey @ 886' MD
5,897.85	5,769.51	987.05	-146.11	30° Inclination @ 5897.85' MD
6,200.08	5,967.07	1,008.50	-367.00	Cross @ 6200.08' MD
6,250.41	5,987.66	1,013.11	-412.65	70° Inclination @ 6250.41' MD
11,596.16	6,041.31	1,092.79	-5,746.00	Cross @ 11596.16' MD
16,971.16	6,077.90	1,025.45	-11,119.00	Cross @ 16971.16' MD
17,103.00	6,076.12	1,026.82	-11,250.82	Last MWD Survey @ 17103' MD
17,171.00	6,075.11	1,027.87	-11,318.81	Projection to TD @ 17171' MD 278.4' FNL/ 200' FEL

Checked By: _____	Approved By: _____	Date: _____
-------------------	--------------------	-------------