

Inspection Photos  
Operator: Enduring Resources  
Location/API #: 067-08667  
Date: 11-14-2019



Photo 1. View of the project area from the well pad entrance facing center.



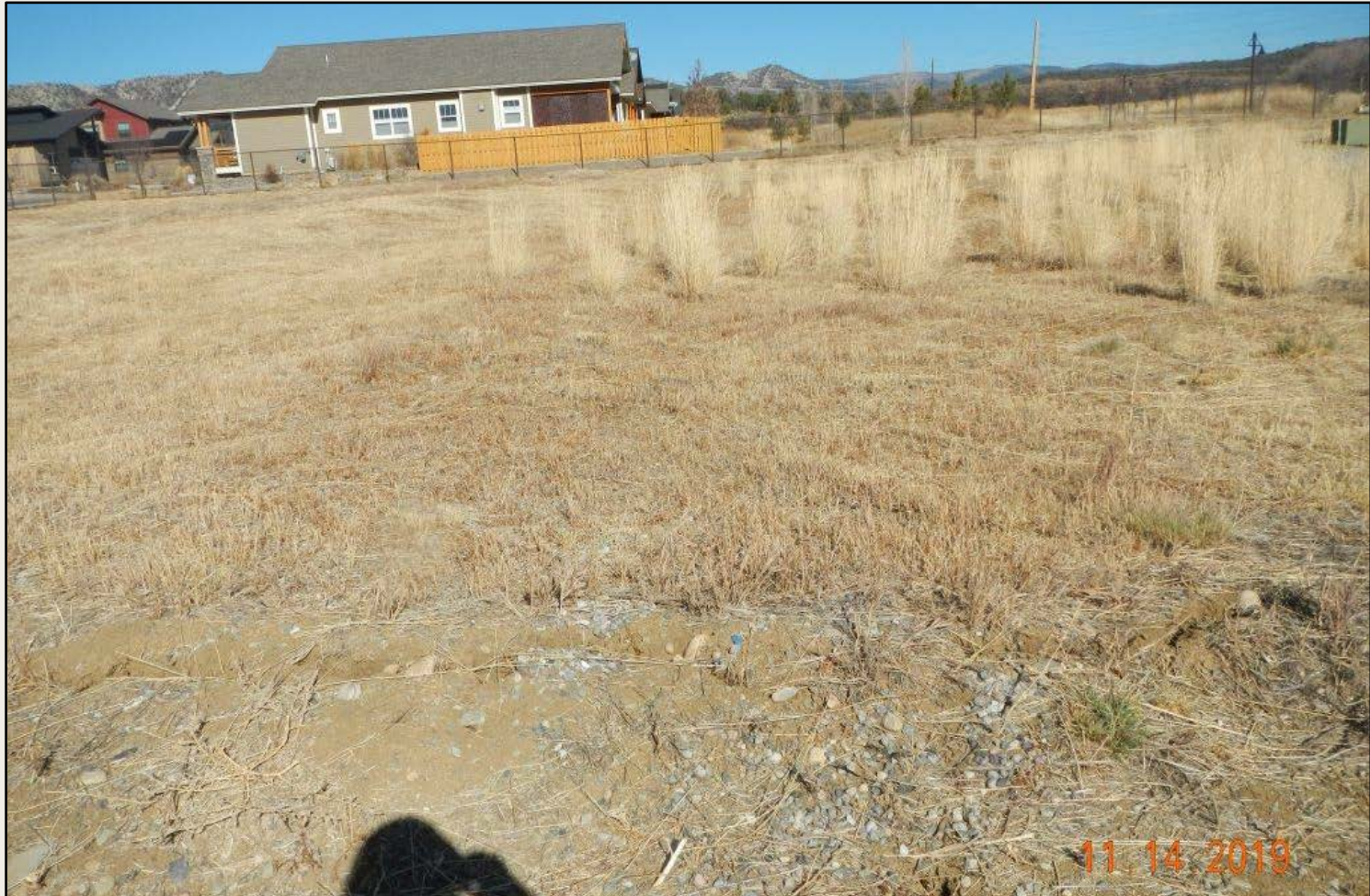


Photo 2. View of the northwestern project area from the access entrance facing northward. Revegetation is progressing with intermediate wheatgrass, smooth brome, and crested wheatgrass. Location is partially surrounded by residential development. Most of the vegetation is mowed.





Photo 3. View of the northern project area from the northwestern corner facing eastward. Revegetation is progressing as described above.





Photo 4. View of reference area, comprised of sagebrush shrubland, with grasses planted in openings.