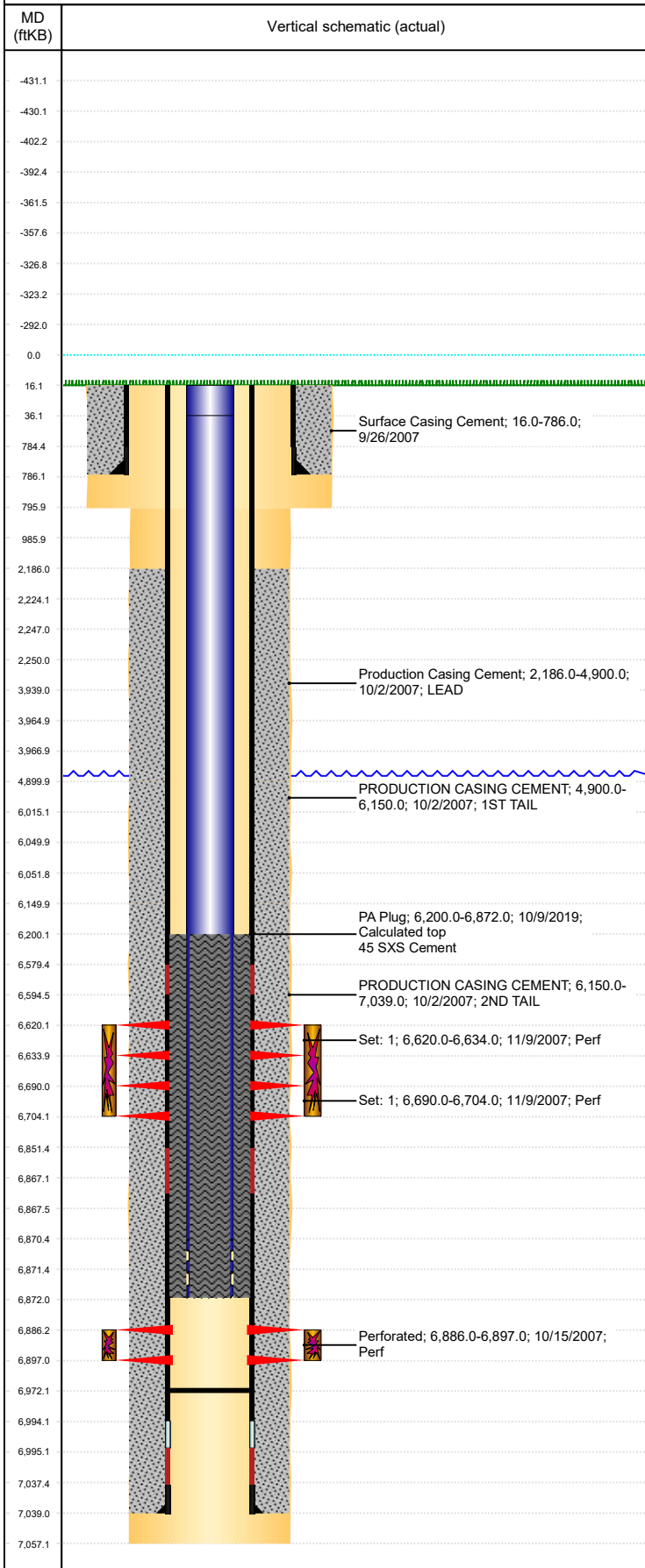


Well Name: LEONARD C21-16

VERTICAL, ORIGINAL HOLE, 12/3/2019 4:40:14 PM



Well Header									
API 05-123-26188			Business Unit DJ BASIN			District 15		Well Config VERTICAL	
KB - GL / MSL (ft... 16.00		Spud Date 9/26/2007		P & A Date		Well Production Status PA			SoRT Yes
Comment STATE SHOWS SHUT IN SINCE SEP 2017.									
Surface Location (Congressional)									
Qtr 3 SE	Qtr 4 SE	Section 21	Twnshp 4	Twnsh... N	Range 64	Rng E/... W	Actual Latitude (°) 40.29235766	Actual Longitude (°) -104.54938028	
Wellbore Sections									
Section Des			Size (in)			Act Top, MD (ftKB)		Act Btm, MD (ftKB)	
SURFACE			12 1/4			16		796	
PRODUCTION			7 7/8			796		7,057	
Casing Strings									
Csg Des			Run Date		OD (in)	Wt/Len (lb/ft)	Grade	Top, MD (ftKB)	MD (ftKB)
Surface			9/26/2007		8 5/8	24.00		16.0	786.0
Production			10/2/2007		4 1/2	11.60	M-80	16.0	7,039.0
Cement									
Des					Start Date		Top (ftKB)		Btm (ftKB)
Surface Casing Cement					9/26/2007		16.0		786.0
Production Casing Cement					10/2/2007		2,186.0		4,900.0
PRODUCTION CASING CEMENT					10/2/2007		4,900.0		6,150.0
PRODUCTION CASING CEMENT					10/2/2007		6,150.0		7,039.0
PA Plug					10/9/2019		6,200.0		6,872.0
Zone Statuses									
Zone Name		Status Date	Status	Fluid Type	Job			Prod Method	
NIOBRARA		11/11/2007	PR	Water	DRILLING/COMPLETION - ORIGINAL, 9/26/2007...			Flowing	
NIOBRARA		6/4/2009	PR					Flowing	
CODELL		6/4/2009	PR					Flowing	
CODELL		11/17/2017	SI						
Perforation Data									
Linked Zone			Bnch/Stg	Entered Shot Total	Top (ftKB)		Btm (ftKB)		Date
NIOBRARA, ORIGINAL HOLE				56	6,620.00		6,634.00		11/9/2007
NIOBRARA, ORIGINAL HOLE				56	6,690.00		6,704.00		11/9/2007
CODELL, ORIGINAL HOLE				44	6,886.00		6,897.00		10/15/2007
Stimulation Intervals									
Zone					Start Date		Top (ftKB)		Btm (ftKB)
NIOBRARA, ORIGINAL HOLE					11/9/2007		6,620.0		6,704.0
CODELL, ORIGINAL HOLE					11/9/2007		6,886.0		6,897.0
Other In Hole									
Run Date		Des				OD (in)	Top (ftKB)		Btm (ftKB)
11/17/2016		Plunger Lift				1.9			
Logs									
Date		Type				Top, MD (ftKB)		Btm, MD (ftKB)	
10/1/2007		COMPENSATED DENSITY				2,650.0		7,035.0	
10/1/2007		INDUCTION				760.0		7,055.0	
10/12/2007		CEMENT BOND				2,080.0		6,978.0	
3/14/2011		GYRO				10.0		6,800.0	
Plug Back Total Depths									
Date		Type			Com				Depth (ftKB)
10/12/2007		FILL			DEPTH LOGGER ON CBL				6,985.0
3/10/2008		FILL			DRILL PLUG FREE, PUSH DOWN TO 6972, ROLL HOLE CLEA...				6,972.0