

GOODWELL PERFORATORS

GREELEY COLORADO

SONIC CEMENT BOND

NO.	COMPANY SNYDER OIL CORP.	
	WELL UPRC NO. 9-3 1 6	
	FIELD WATTENBERG	
	COUNTY WELD	STATE CO
LOCATION SE NW SURF NE NW TD		OTHER SERVICE PERF
SEC 9	TWP 4N	RGE 66W
T DATUM GROUND LEVEL ELEV 4695 MEASURED FROM K.B. 11 FT. ABOVE PERMANENT DATUM MEASURED FROM KELLY BUSHING		ELEVATIONS KB 4706 DF GL 4695

	OS 24 94			
	ONE			
	GR CBL			
LLER	7578			
GER	7512			
GGED INT.	7507			
D INT.	3100			
D IN HOLE	WATER			
EL	FULL			
TEMP.	250 F			
	811			
	GREELEY			
BY	A. MUNDAY			
BY				

BORE HOLE RECORD

CASING RECORD

T	FROM	TO	SIZE	WT.	FROM	TO
2 1/4	000	492	8 5/8	24	000	492
7/8	492	7578	3 1/2	7.7	000	T.D.

COL 2 1/8 COMPROBE SINGLE RECEIVER 3' SPACING

0 KILO HERTZ TRANSITTER AT 4 WATTS OUTPUT

NA SX PREM CMT

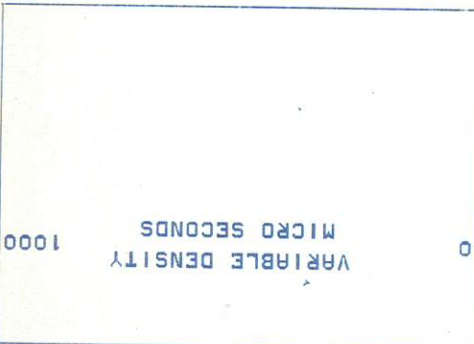
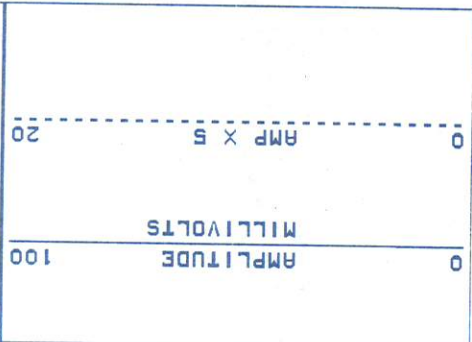
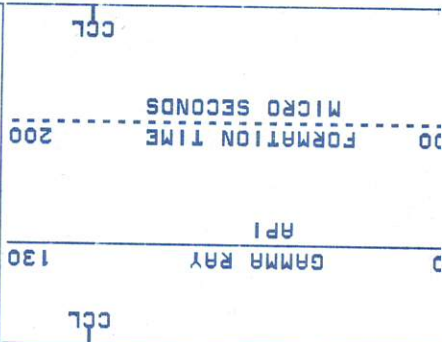
SERIAL NUMBER 122843

NA SX PREM CMT

CINTILLATION GAMMA RAY DETECTOR 1 FT.

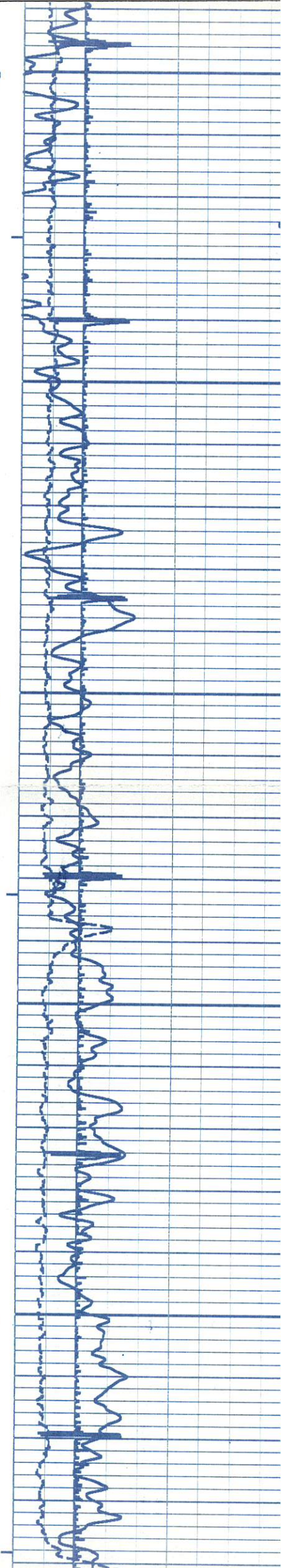
THANK YOU FOR CALLING GOODWELL

303 353 518



03100

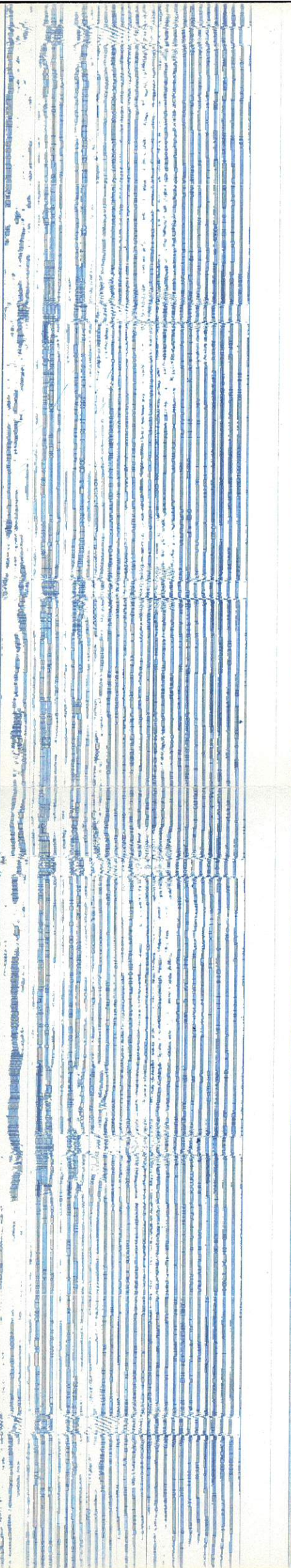
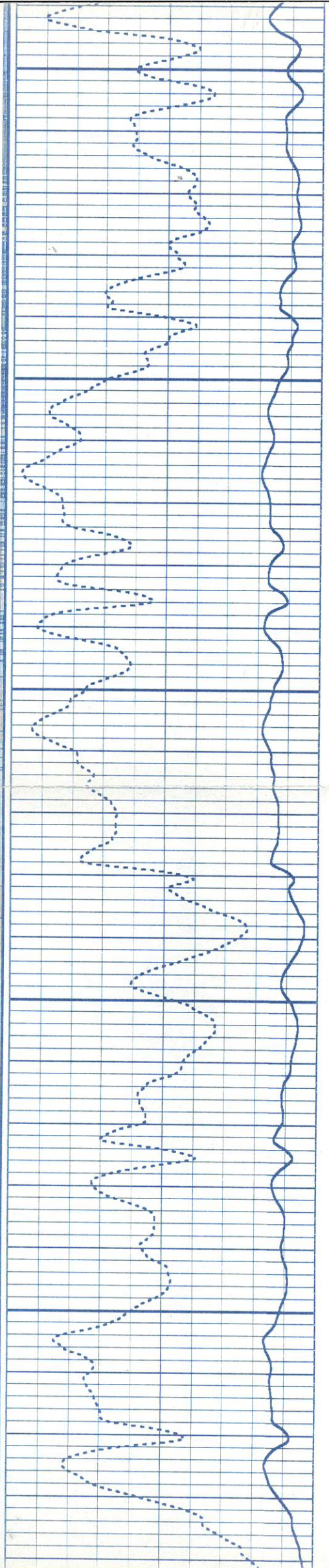
03200

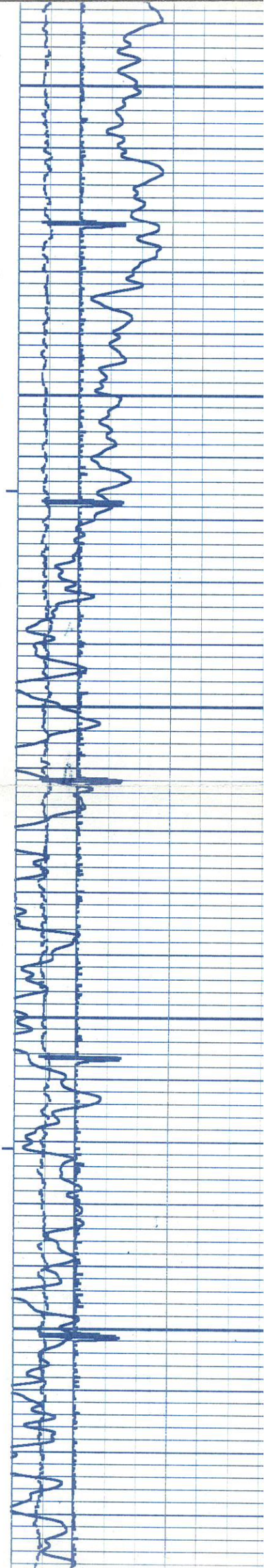


03500

03400

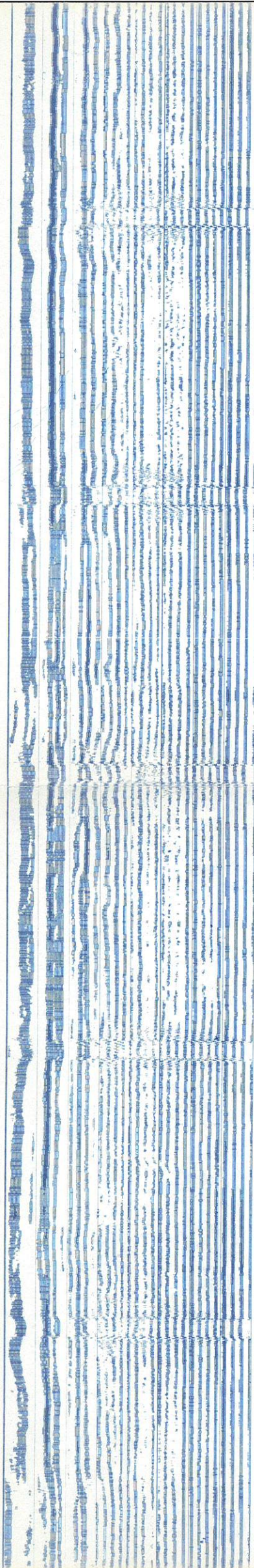
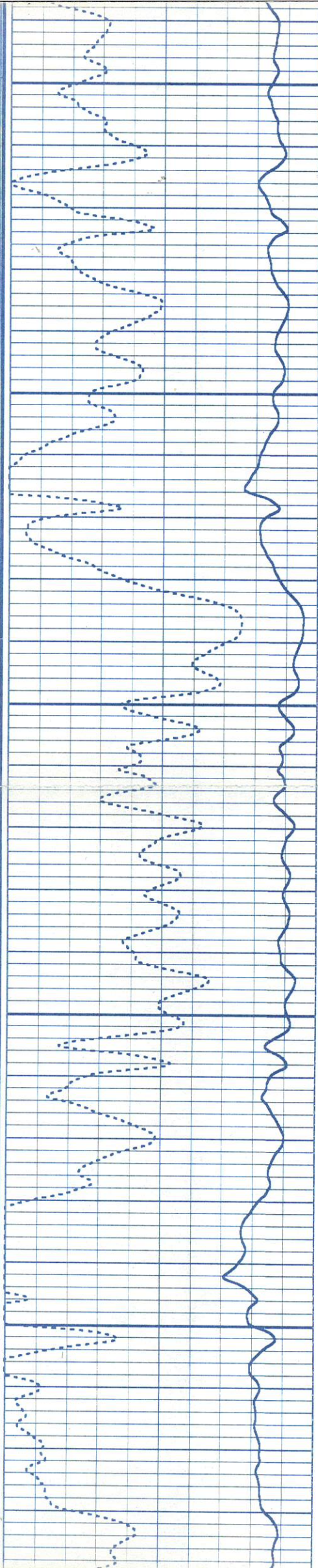
03300





03700

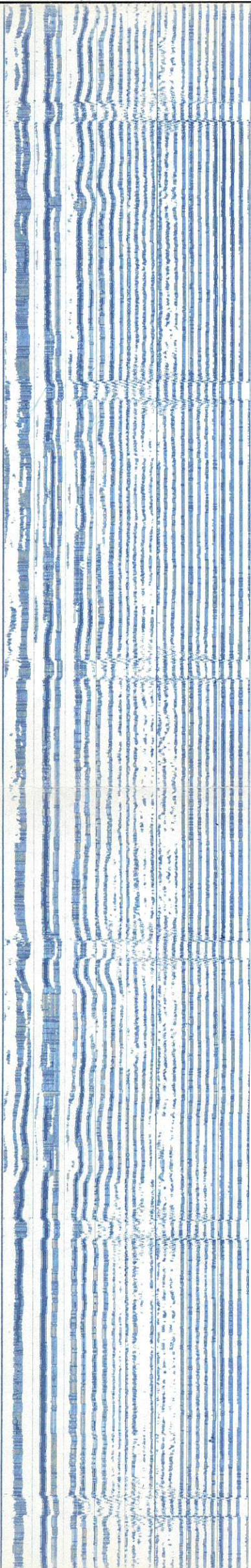
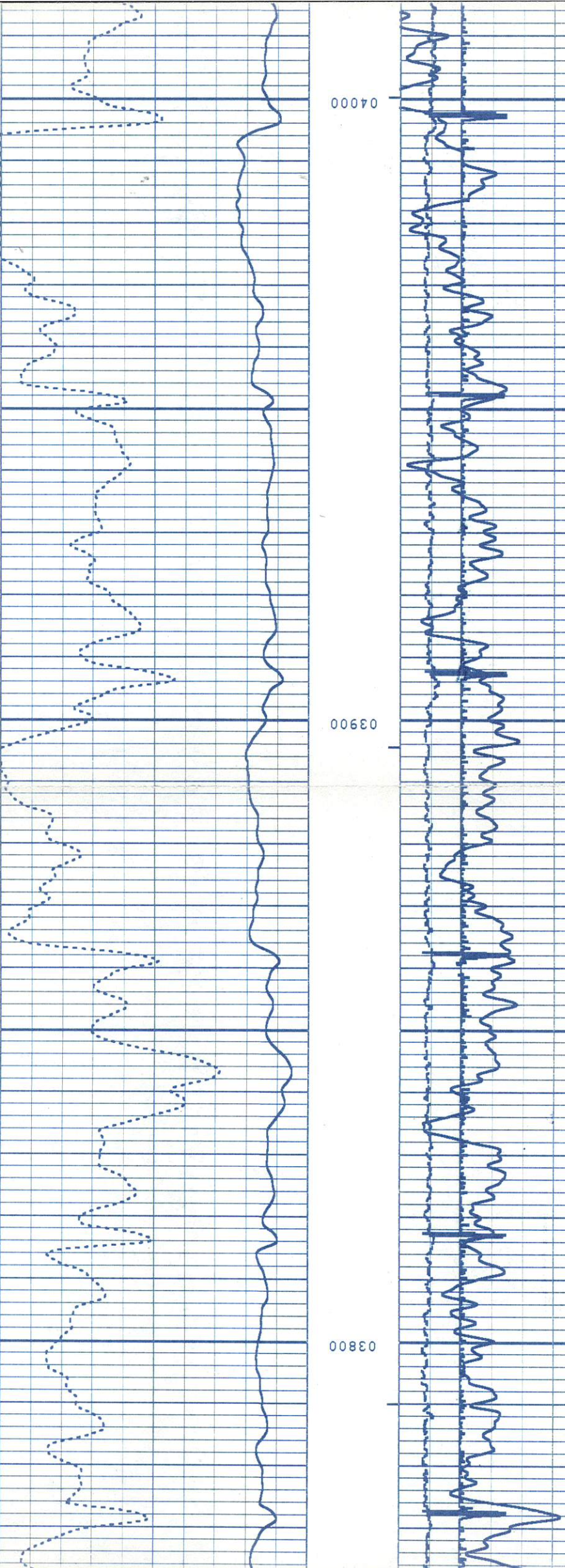
03600



04000

03900

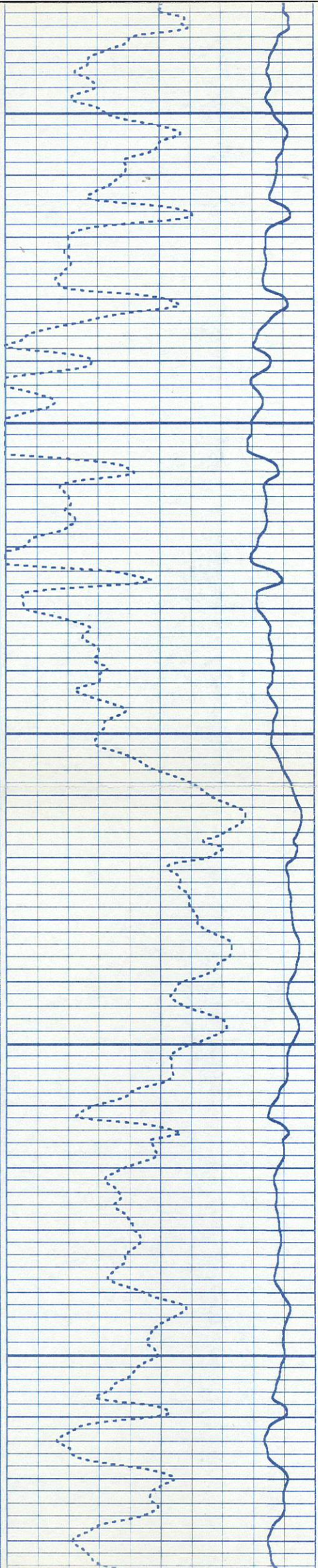
03800

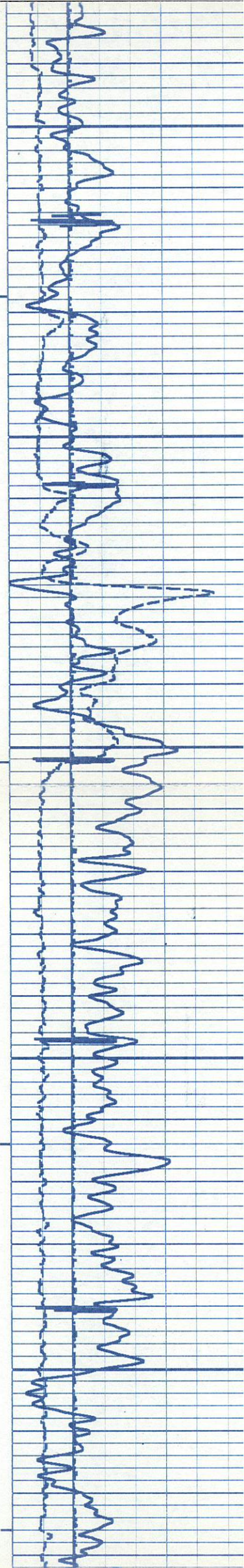




04200

04100

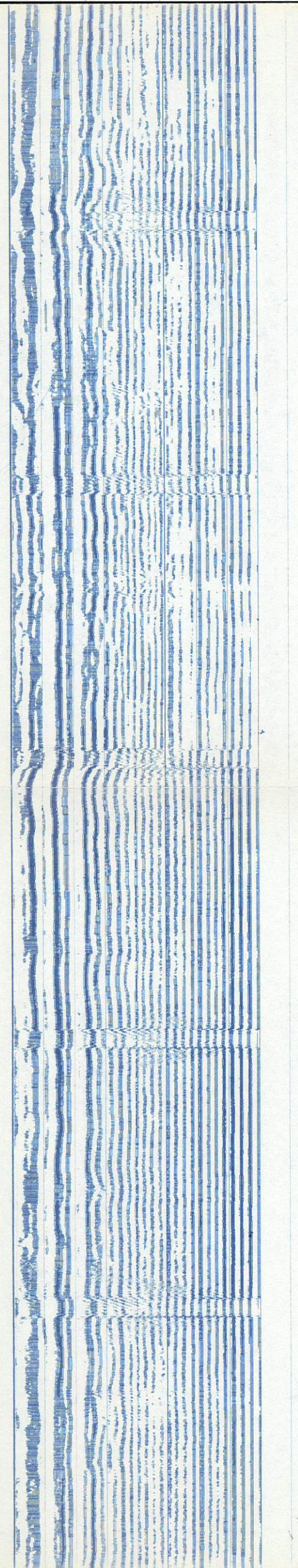
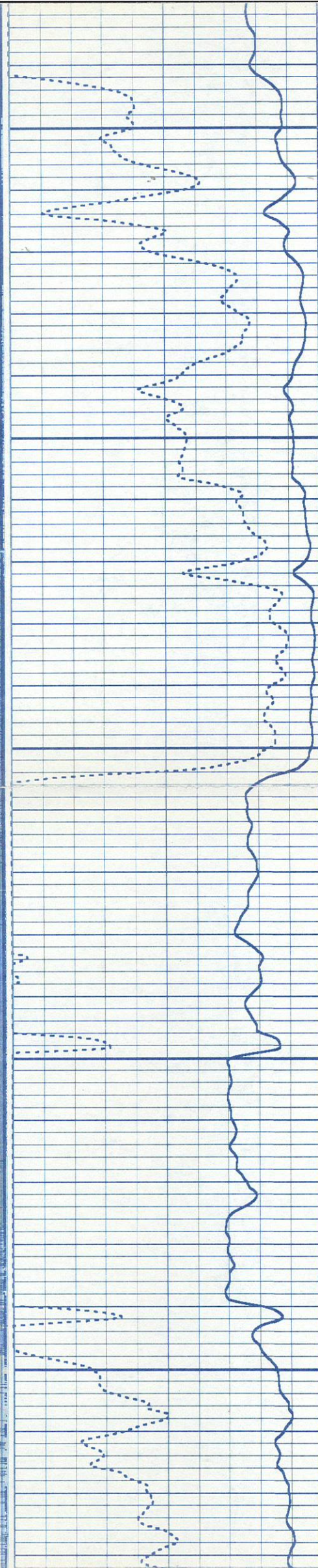


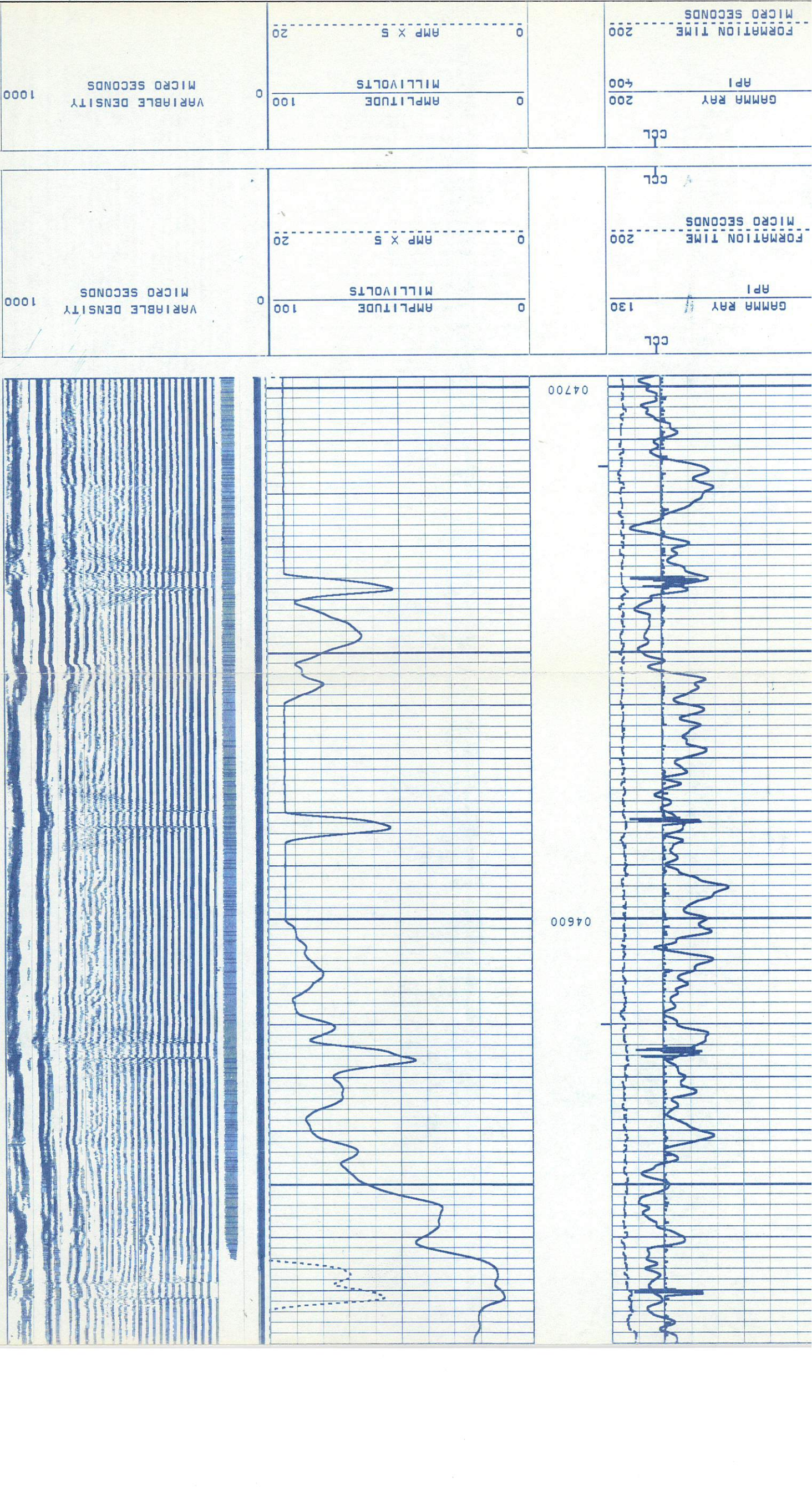


04500

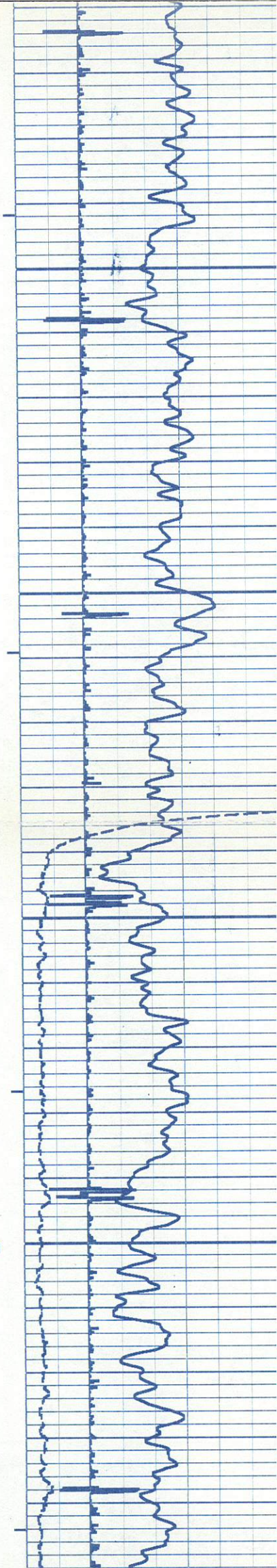
04400

04300



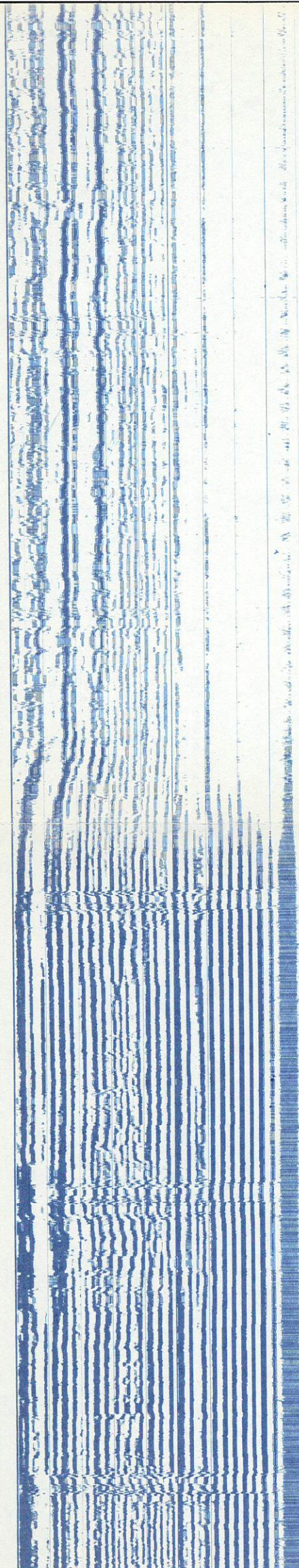
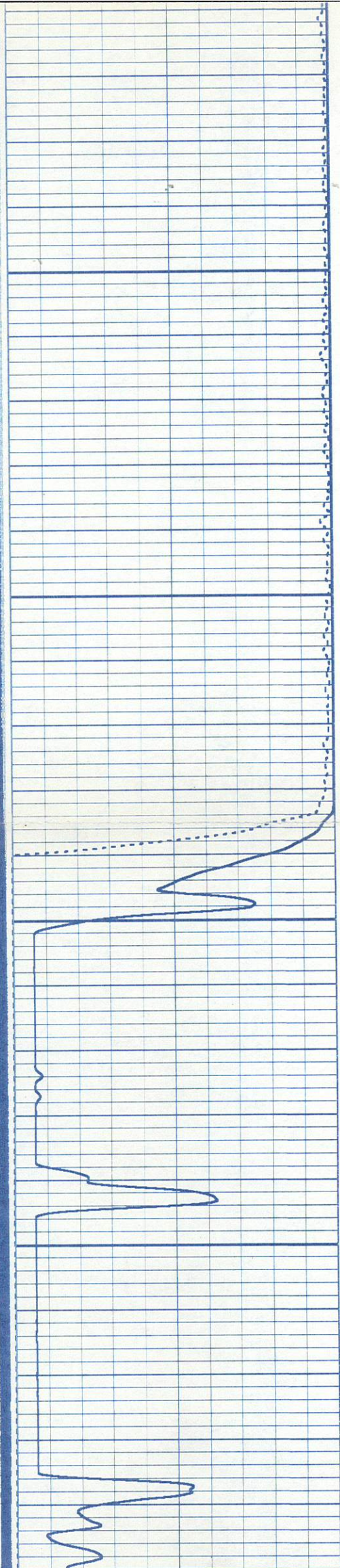


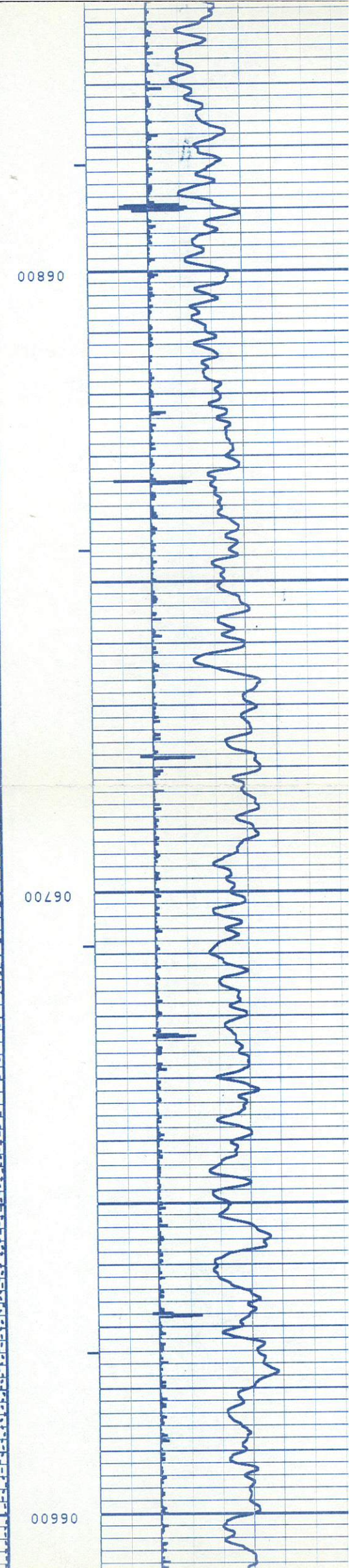
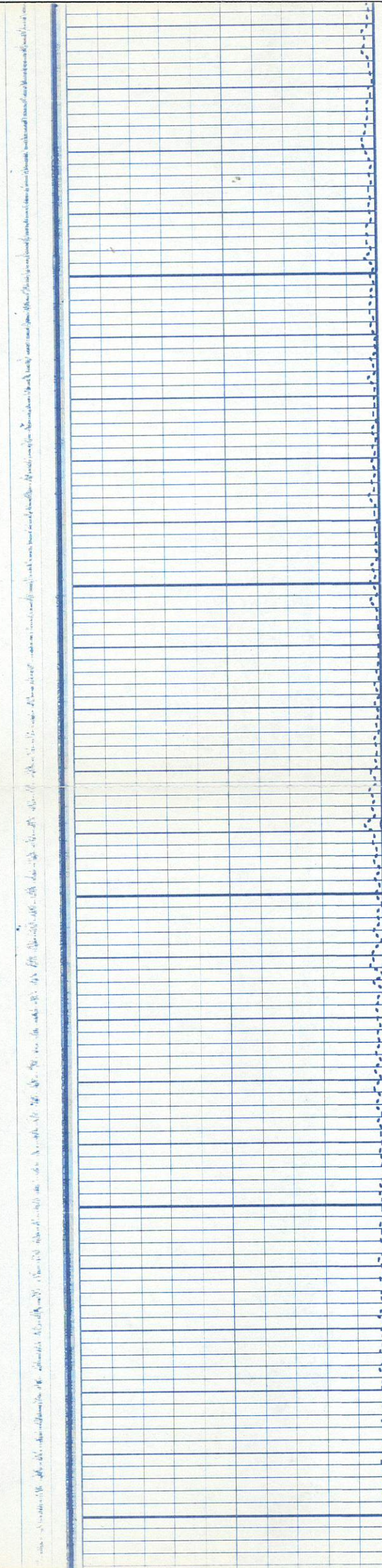
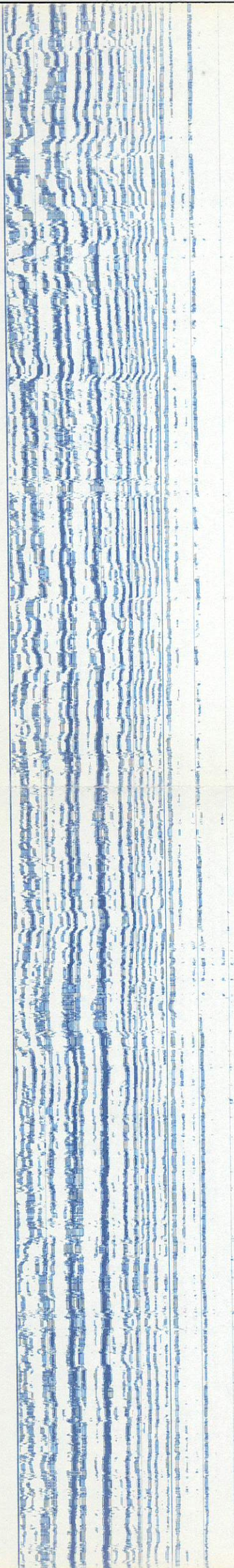
CCL

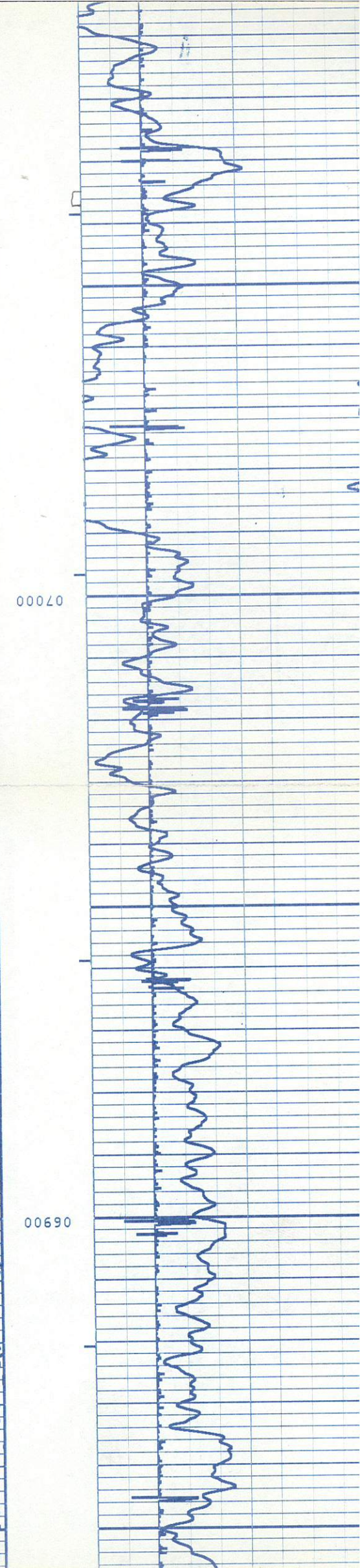
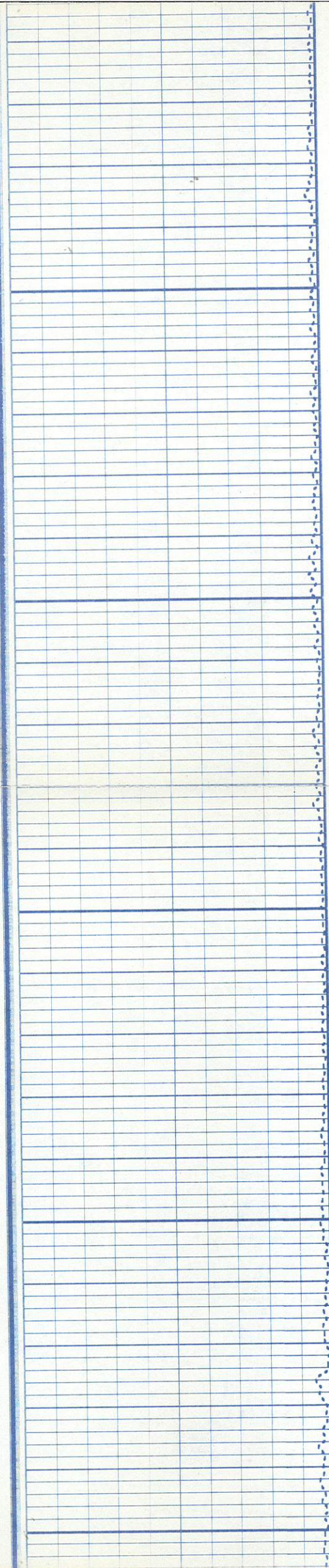
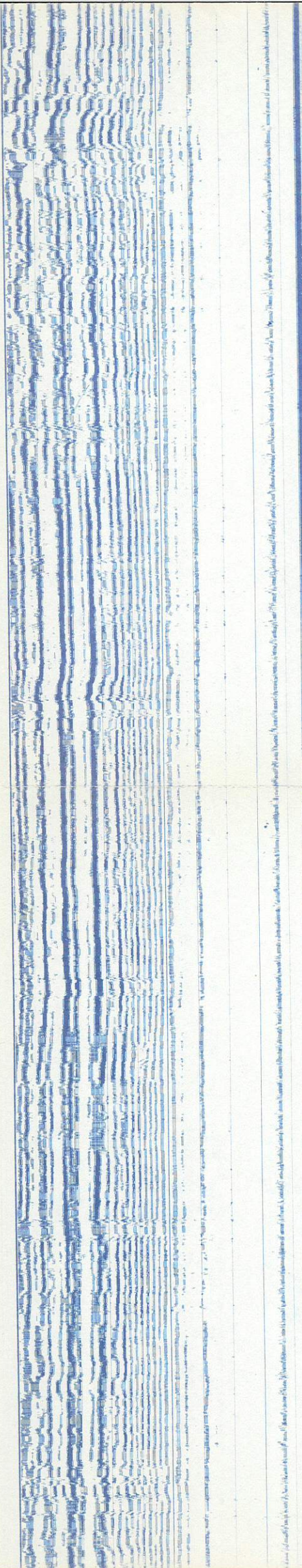


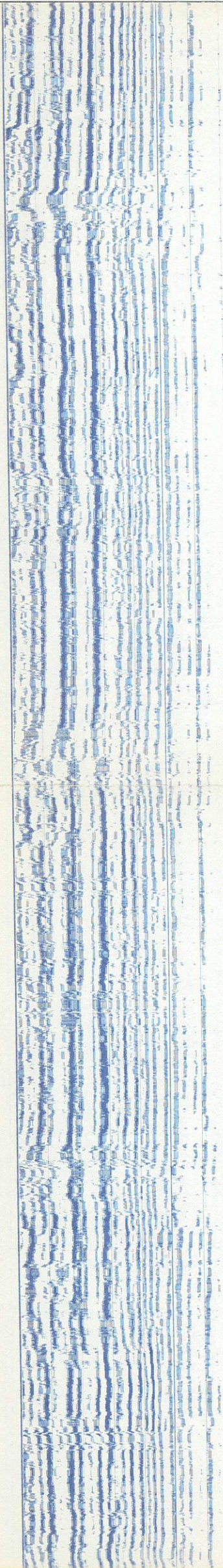
06500

06400

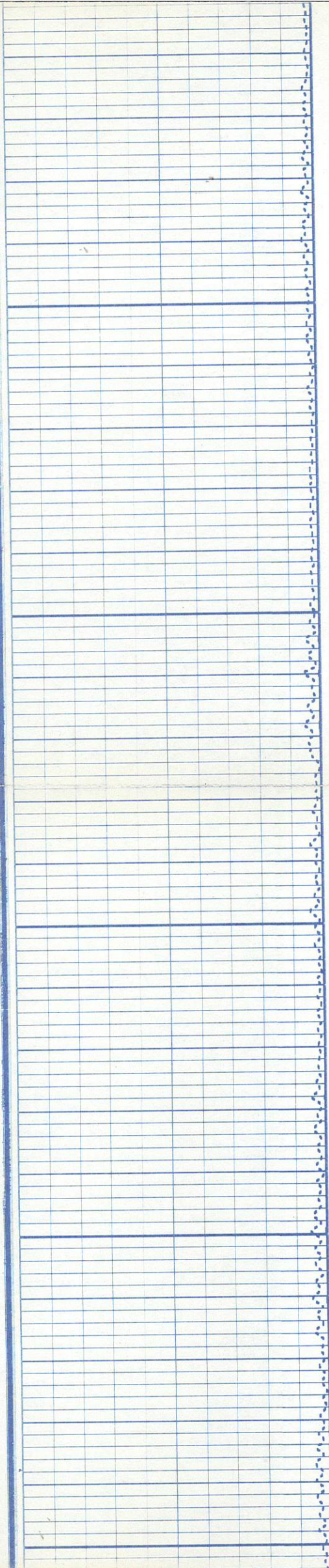








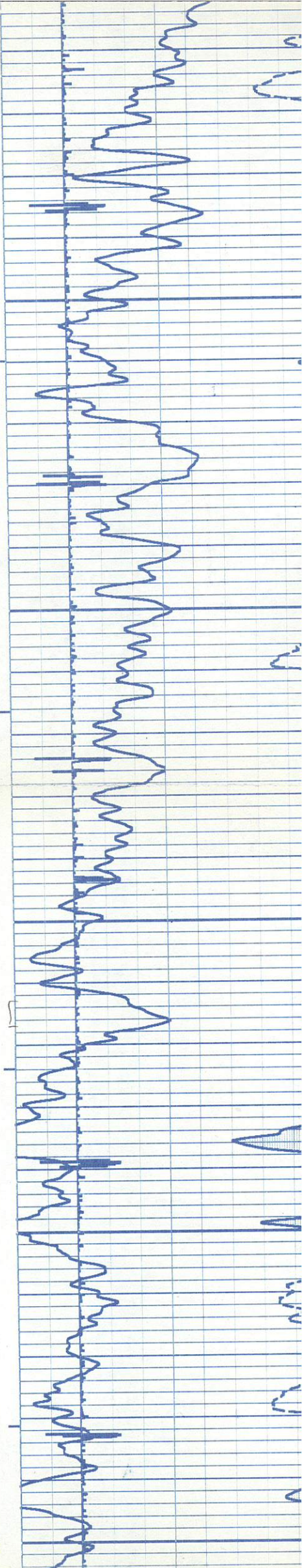
07100 07200 07300



07300

07200

07100



DRILLER T.D. 7528
LOGGER T.D. 7512
BOTTOM LOGGED 7507
INTERVAL

COMPANY SNYDER OIL CORP.
WELL UPRC NO. 9-3 I 6
FIELD WATTENBERG
LOCATION SEC. 9 4N 65W
COUNTY WELD
STATE COLO.

05-24-94

