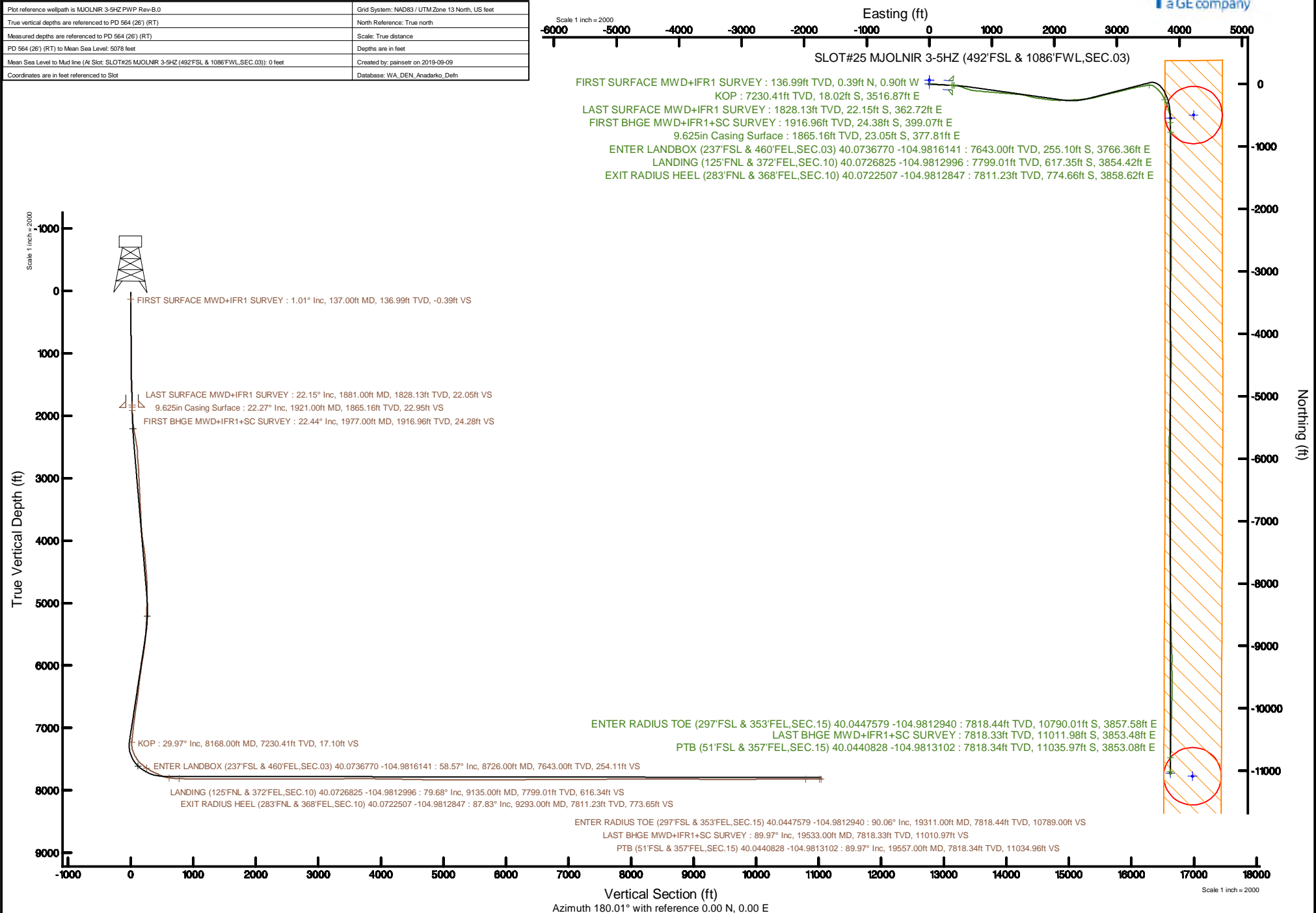


Location:	COLORADO	Slot:	SLOT#25 MJOLNIR 3-5HZ (492FSL & 1086FWL, SEC.03)
Field:	WELD COUNTY (UTM/TRUE NORTH)	Well:	MJOLNIR 3-5HZ
Facility:	SEC.03-T1N-R68W	Wellbore:	MJOLNIR 3-5HZ PWB

Plot reference wellpath is MJOLNIR 3-5HZ PWP Rev-B.0	Grid System: NAD83 / UTM Zone 13 North, US feet
True vertical depths are referenced to PD 564 (26) (RT)	North Reference: True north
Measured depths are referenced to PD 564 (26) (RT)	Scale: True distance
PD 564 (26) (RT) to Mean Sea Level: 5078 feet	Depths are in feet
Mean Sea Level to Mud line (At Slot: SLOTH25 MJOLNIR 3-5HZ (492FSL & 1086FWL,SEC.03)): 0 feet	Created by: panset on 2019-09-09
Coordinates are in feet referenced to Slot	Database: WA, DEN, Anadarko, Delphi



REFERENCE WELLPATH IDENTIFICATION			
Operator	KERR-MCGEE OIL & GAS ONSHORE LP (WA)	Slot	SLOT#25 MJOLNIR 3-5HZ (492'FSL & 1086'FWL,SEC.03)
Area	COLORADO	Well	MJOLNIR 3-5HZ
Field	WELD COUNTY (UTM/TRUE NORTH)	Wellbore	MJOLNIR 3-5HZ AWP
Facility	SEC.03-T1N-R68W		

REPORT SETUP INFORMATION			
Projection System	NAD83 / UTM Zone 13 North, US feet	Software System	WellArchitect® 5.1
North Reference	True	User	Painsetr
Scale	0.999600	Report Generated	9/9/2019 at 9:22:18 AM
Convergence at slot	0.00°	Database/Source file	WA_DEN_Anadarko_Defn/MJOLNIR_3-5HZ_AWP.xml

WELLPATH LOCATION						
	Local coordinates		Grid coordinates		Geographic coordinates	
	North[ft]	East[ft]	Easting[US ft]	Northing[US ft]	Latitude	Longitude
Slot Location	-1213.82	-95.71	1641795.26	14553817.72	40°04'27.761"N	104°59'42.259"W
Facility Reference Pt			1641890.86	14555031.06	40°04'39.756"N	104°59'41.028"W
Field Reference Pt			1698235.31	14552047.82	40°04'09.600"N	104°47'36.000"W

WELLPATH DATUM			
Calculation method	Minimum curvature	PD 564 (26') (RT) to Facility Vertical Datum	5078.00ft
Horizontal Reference Pt	Slot	PD 564 (26') (RT) to Mean Sea Level	5078.00ft
Vertical Reference Pt	PD 564 (26') (RT)	PD 564 (26') (RT) to Mud Line at Slot (SLOT#25 MJOLNIR 3-5HZ (492'FSL & 1086'FWL,SEC.03))	5078.00ft
MD Reference Pt	PD 564 (26') (RT)	Section Origin	N 0.00, E 0.00 ft
Field Vertical Reference	Mean Sea Level	Section Azimuth	180.01°

REFERENCE WELLPATH IDENTIFICATION			
Operator	KERR-MCGEE OIL & GAS ONSHORE LP (WA)	Slot	SLOT#25 MJOLNIR 3-5HZ (492'FSL & 1086'FWL,SEC.03)
Area	COLORADO	Well	MJOLNIR 3-5HZ
Field	WELD COUNTY (UTM/TRUE NORTH)	Wellbore	MJOLNIR 3-5HZ AWB
Facility	SEC.03-T1N-R68W		

WELLPATH DATA (223 stations) † = interpolated/extrapolated station												
MD [ft]	Inclination [°]	Azimuth [°]	TVD [ft]	Vert Sect [ft]	North [ft]	East [ft]	Grid East [US ft]	Grid North [US ft]	Latitude	Longitude	DLS [°/100ft]	Comments
0.00†	0.000	293.240	0.00	0.00	0.00	0.00	1641795.26	14553817.72	40°04'27.761°N	104°59'42.259°W	0.00	
26.00	0.000	293.240	26.00	0.00	0.00	0.00	1641795.26	14553817.72	40°04'27.761°N	104°59'42.259°W	0.00	
137.00	1.010	293.240	136.99	-0.39	0.39	-0.90	1641794.36	14553818.11	40°04'27.765°N	104°59'42.271°W	0.91	FIRST SURFACE MWD+IFR1 SURVEY
232.00	0.350	310.020	231.99	-0.90	0.90	-1.89	1641793.37	14553818.63	40°04'27.770°N	104°59'42.284°W	0.72	
327.00	1.230	92.580	326.98	-1.04	1.04	-1.09	1641794.17	14553818.77	40°04'27.771°N	104°59'42.273°W	1.60	
422.00	2.990	102.510	421.91	-0.46	0.46	2.34	1641797.60	14553818.18	40°04'27.765°N	104°59'42.229°W	1.89	
517.00	5.010	97.500	516.68	0.61	-0.62	8.88	1641804.13	14553817.11	40°04'27.755°N	104°59'42.145°W	2.16	
613.00	8.880	101.020	611.95	2.58	-2.58	20.31	1641815.56	14553815.14	40°04'27.735°N	104°59'41.998°W	4.05	
708.00	10.500	98.210	705.60	5.21	-5.22	36.07	1641831.32	14553812.51	40°04'27.709°N	104°59'41.795°W	1.78	
803.00	11.430	92.580	798.86	6.87	-6.88	54.05	1641849.28	14553810.85	40°04'27.693°N	104°59'41.564°W	1.49	
898.00	12.390	92.670	891.82	7.76	-7.78	73.63	1641868.86	14553809.95	40°04'27.684°N	104°59'41.312°W	1.01	
993.00	12.790	92.850	984.53	8.75	-8.78	94.31	1641889.54	14553808.96	40°04'27.674°N	104°59'41.046°W	0.42	
1089.00	12.480	91.530	1078.21	9.55	-9.58	115.30	1641910.51	14553808.15	40°04'27.666°N	104°59'40.776°W	0.44	
1184.00	12.740	91.700	1170.92	10.13	-10.17	136.03	1641931.23	14553807.57	40°04'27.660°N	104°59'40.509°W	0.28	
1278.00	13.360	90.390	1262.49	10.51	-10.55	157.25	1641952.45	14553807.19	40°04'27.657°N	104°59'40.236°W	0.73	
1373.00	15.380	91.260	1354.51	10.85	-10.90	180.82	1641976.01	14553806.84	40°04'27.653°N	104°59'39.933°W	2.14	
1469.00	18.060	95.750	1446.45	12.62	-12.67	208.36	1642003.54	14553805.07	40°04'27.636°N	104°59'39.579°W	3.10	
1564.00	21.010	95.220	1535.97	15.63	-15.70	239.98	1642035.14	14553802.05	40°04'27.606°N	104°59'39.172°W	3.11	
1659.00	23.640	94.520	1623.84	18.67	-18.75	275.93	1642071.08	14553799.00	40°04'27.576°N	104°59'38.710°W	2.78	
1754.00	23.420	91.260	1710.95	20.58	-20.66	313.80	1642108.93	14553797.09	40°04'27.557°N	104°59'38.223°W	1.39	
1849.00	22.240	91.700	1798.50	21.52	-21.61	350.64	1642145.76	14553796.14	40°04'27.547°N	104°59'37.749°W	1.26	
1881.00	22.150	93.370	1828.13	22.05	-22.15	362.72	1642157.83	14553795.61	40°04'27.542°N	104°59'37.593°W	1.99	LAST SURFACE MWD+IFR1 SURVEY
1977.00	22.440	93.670	1916.96	24.28	-24.38	399.07	1642194.17	14553793.37	40°04'27.520°N	104°59'37.126°W	0.32	FIRST BHGE MWD+IFR1+SC SURVEY
2066.00	21.960	95.800	1999.36	27.04	-27.15	432.58	1642227.67	14553790.61	40°04'27.492°N	104°59'36.695°W	1.05	
2156.00	23.410	102.740	2082.41	32.67	-32.80	466.77	1642261.84	14553784.97	40°04'27.437°N	104°59'36.255°W	3.38	
2245.00	24.570	109.360	2163.74	42.70	-42.83	501.48	1642296.54	14553774.94	40°04'27.337°N	104°59'35.808°W	3.29	
2335.00	26.830	111.480	2244.83	56.33	-56.47	538.04	1642333.08	14553761.30	40°04'27.203°N	104°59'35.338°W	2.71	
2424.00	28.540	108.620	2323.64	70.47	-70.62	576.88	1642371.91	14553747.17	40°04'27.063°N	104°59'34.838°W	2.43	
2513.00	30.510	107.530	2401.08	84.05	-84.21	618.57	1642413.59	14553733.58	40°04'26.929°N	104°59'34.302°W	2.29	
2603.00	32.070	104.710	2477.99	96.99	-97.16	663.47	1642458.47	14553720.64	40°04'26.801°N	104°59'33.725°W	2.38	
2693.00	32.510	97.930	2554.10	106.38	-106.57	710.55	1642505.53	14553711.24	40°04'26.708°N	104°59'33.119°W	4.05	
2782.00	31.850	90.910	2629.45	110.04	-110.24	757.74	1642552.70	14553707.57	40°04'26.671°N	104°59'32.512°W	4.26	
2872.00	29.630	96.960	2706.82	113.11	-113.32	803.58	1642598.52	14553704.50	40°04'26.641°N	104°59'31.922°W	4.23	
2961.00	31.800	100.440	2783.34	120.01	-120.23	848.49	1642643.42	14553697.58	40°04'26.572°N	104°59'31.345°W	3.15	
3051.00	32.270	93.410	2859.66	125.73	-125.96	895.81	1642690.72	14553691.86	40°04'26.516°N	104°59'30.736°W	4.17	
3140.00	32.290	94.530	2934.90	129.01	-129.25	943.23	1642738.11	14553688.57	40°04'26.483°N	104°59'30.126°W	0.67	
3230.00	32.340	94.330	3010.97	132.71	-132.97	991.19	1642786.06	14553684.86	40°04'26.447°N	104°59'29.509°W	0.13	
3319.00	32.450	93.910	3086.11	136.12	-136.39	1038.75	1642833.60	14553681.44	40°04'26.413°N	104°59'28.897°W	0.28	
3409.00	31.800	95.380	3162.34	139.98	-140.26	1086.45	1642881.28	14553677.58	40°04'26.374°N	104°59'28.284°W	1.13	
3498.00	32.480	94.500	3237.70	144.04	-144.34	1133.62	1642928.43	14553673.51	40°04'26.334°N	104°59'27.677°W	0.93	
3588.00	32.380	94.230	3313.66	147.70	-148.01	1181.75	1642976.54	14553669.84	40°04'26.298°N	104°59'27.058°W	0.20	
3677.00	32.460	94.370	3388.79	151.27	-151.59	1229.33	1643024.10	14553666.26	40°04'26.262°N	104°59'26.446°W	0.12	
3766.00	32.160	95.310	3464.01	155.27	-155.60	1276.73	1643071.48	14553662.26	40°04'26.223°N	104°59'25.836°W	0.66	
3856.00	31.920	94.230	3540.30	159.23	-159.57	1324.31	1643119.04	14553658.29	40°04'26.184°N	104°59'25.224°W	0.69	
3945.00	30.050	94.690	3616.60	162.77	-163.13	1369.98	1643164.70	14553654.73	40°04'26.148°N	104°59'24.636°W	2.12	

REFERENCE WELLPATH IDENTIFICATION			
Operator	KERR-MCGEE OIL & GAS ONSHORE LP (WA)	Slot	SLOT#25 MJOLNIR 3-5HZ (492'FSL & 1086'FWL,SEC.03)
Area	COLORADO	Well	MJOLNIR 3-5HZ
Field	WELD COUNTY (UTM/TRUE NORTH)	Wellbore	MJOLNIR 3-5HZ AWB
Facility	SEC.03-T1N-R68W		

WELLPATH DATA (223 stations)

MD [ft]	Inclination [°]	Azimuth [°]	TVD [ft]	Vert Sect [ft]	North [ft]	East [ft]	Grid East [US ft]	Grid North [US ft]	Latitude	Longitude	DLS [°/100ft]	Comments
4035.00	30.140	94.120	3694.47	166.23	-166.60	1414.98	1643209.68	14553651.27	40°04'26.114"N	104°59'24.058"W	0.33	
4124.00	29.000	96.430	3771.87	170.24	-170.62	1458.71	1643253.39	14553647.25	40°04'26.074"N	104°59'23.495"W	1.81	
4214.00	26.400	99.500	3851.56	175.97	-176.36	1500.13	1643294.79	14553641.51	40°04'26.017"N	104°59'22.962"W	3.29	
4303.00	28.380	103.040	3930.58	184.00	-184.40	1540.26	1643334.91	14553633.48	40°04'25.938"N	104°59'22.446"W	2.88	
4393.00	30.170	106.160	4009.09	195.11	-195.53	1582.82	1643377.46	14553622.36	40°04'25.828"N	104°59'21.899"W	2.61	
4482.00	31.860	104.130	4085.36	207.06	-207.49	1627.09	1643421.70	14553610.41	40°04'25.710"N	104°59'21.329"W	2.23	
4571.00	32.860	103.180	4160.54	218.29	-218.73	1673.37	1643467.97	14553599.18	40°04'25.599"N	104°59'20.734"W	1.26	
4661.00	32.290	96.430	4236.41	226.54	-226.99	1721.05	1643515.63	14553590.92	40°04'25.517"N	104°59'20.120"W	4.09	
4750.00	32.310	97.340	4311.64	232.23	-232.69	1768.27	1643562.83	14553585.22	40°04'25.461"N	104°59'19.513"W	0.55	
4840.00	32.230	97.270	4387.74	238.32	-238.80	1815.93	1643610.47	14553579.12	40°04'25.400"N	104°59'18.900"W	0.10	
4929.00	32.240	98.010	4463.02	244.62	-245.11	1862.98	1643657.50	14553572.81	40°04'25.338"N	104°59'18.295"W	0.44	
5019.00	31.920	97.860	4539.28	251.21	-251.71	1910.32	1643704.82	14553566.22	40°04'25.273"N	104°59'17.686"W	0.37	
5108.00	32.420	95.550	4614.61	256.72	-257.23	1957.37	1643751.86	14553560.70	40°04'25.218"N	104°59'17.081"W	1.49	
5197.00	32.340	91.960	4689.78	259.83	-260.36	2004.91	1643799.38	14553557.58	40°04'25.187"N	104°59'16.469"W	2.16	
5287.00	32.300	93.450	4765.84	262.09	-262.63	2052.98	1643847.42	14553555.32	40°04'25.165"N	104°59'15.851"W	0.89	
5376.00	32.300	88.220	4841.09	262.77	-263.32	2100.49	1643894.92	14553554.63	40°04'25.158"N	104°59'15.240"W	3.14	
5464.00	32.060	88.090	4915.57	261.25	-261.81	2147.33	1643941.74	14553556.14	40°04'25.173"N	104°59'14.637"W	0.28	
5554.00	32.040	88.440	4991.85	259.79	-260.36	2195.07	1643989.46	14553557.58	40°04'25.187"N	104°59'14.023"W	0.21	
5643.00	32.260	88.030	5067.20	258.32	-258.91	2242.41	1644036.78	14553559.05	40°04'25.201"N	104°59'13.414"W	0.35	
5732.00	32.160	87.660	5142.50	256.52	-257.12	2289.81	1644084.16	14553560.83	40°04'25.219"N	104°59'12.804"W	0.25	
5822.00	32.300	88.780	5218.64	255.02	-255.63	2337.79	1644132.12	14553562.32	40°04'25.234"N	104°59'12.187"W	0.68	
5911.00	32.330	84.880	5293.86	252.38	-253.00	2385.27	1644179.58	14553564.96	40°04'25.259"N	104°59'11.576"W	2.34	
6001.00	32.290	83.240	5369.93	247.39	-248.02	2433.11	1644227.40	14553569.93	40°04'25.309"N	104°59'10.961"W	0.97	
6090.00	31.670	84.900	5445.42	242.50	-243.15	2479.99	1644274.26	14553574.81	40°04'25.357"N	104°59'10.358"W	1.21	
6179.00	31.320	83.740	5521.31	237.89	-238.55	2526.25	1644320.51	14553579.41	40°04'25.402"N	104°59'09.763"W	0.79	
6268.00	31.190	81.030	5597.40	231.76	-232.43	2572.01	1644366.25	14553585.53	40°04'25.463"N	104°59'09.174"W	1.59	
6358.00	31.430	78.840	5674.29	223.57	-224.26	2618.06	1644412.28	14553593.70	40°04'25.543"N	104°59'08.582"W	1.29	
6447.00	31.220	77.080	5750.32	213.91	-214.61	2663.31	1644457.51	14553603.35	40°04'25.639"N	104°59'08.000"W	1.05	
6537.00	31.440	74.770	5827.20	202.52	-203.23	2708.69	1644502.87	14553614.73	40°04'25.751"N	104°59'07.416"W	1.36	
6626.00	31.300	75.090	5903.19	190.46	-191.18	2753.43	1644547.59	14553626.77	40°04'25.870"N	104°59'06.840"W	0.24	
6715.00	31.320	74.850	5979.23	178.46	-179.19	2798.09	1644592.24	14553638.76	40°04'25.988"N	104°59'06.266"W	0.14	
6804.00	31.210	76.200	6055.31	166.90	-167.64	2842.82	1644636.94	14553650.31	40°04'26.103"N	104°59'05.691"W	0.80	
6893.00	31.230	74.560	6131.42	155.24	-156.00	2887.45	1644681.56	14553661.95	40°04'26.218"N	104°59'05.116"W	0.96	
6983.00	30.880	77.690	6208.53	144.09	-144.86	2932.51	1644726.60	14553673.08	40°04'26.328"N	104°59'04.537"W	1.84	
7072.00	30.200	79.230	6285.18	135.03	-135.81	2976.81	1644770.88	14553682.13	40°04'26.417"N	104°59'03.967"W	1.16	
7161.00	24.180	74.620	6364.32	125.99	-126.78	3016.42	1644810.47	14553691.16	40°04'26.506"N	104°59'03.457"W	7.16	
7250.00	26.270	76.870	6444.83	116.67	-117.47	3053.18	1644847.22	14553700.47	40°04'26.598"N	104°59'02.985"W	2.58	
7340.00	28.830	75.970	6524.62	106.88	-107.69	3093.63	1644887.66	14553710.25	40°04'26.695"N	104°59'02.464"W	2.88	
7429.00	31.260	75.420	6601.65	95.85	-96.67	3136.81	1644930.81	14553721.26	40°04'26.804"N	104°59'01.909"W	2.75	
7519.00	32.240	75.940	6678.18	84.13	-84.96	3182.70	1644976.68	14553732.97	40°04'26.919"N	104°59'01.318"W	1.13	
7608.00	31.410	76.640	6753.80	72.99	-73.83	3228.29	1645022.25	14553744.10	40°04'27.029"N	104°59'00.732"W	1.02	
7697.00	31.880	77.630	6829.57	62.58	-63.44	3273.81	1645067.76	14553754.49	40°04'27.132"N	104°59'00.146"W	0.79	
7787.00	31.480	78.490	6906.16	52.79	-53.66	3320.05	1645113.98	14553764.27	40°04'27.228"N	104°58'59.551"W	0.67	
7876.00	31.400	79.990	6982.09	44.11	-44.99	3365.65	1645159.56	14553772.93	40°04'27.314"N	104°58'58.965"W	0.88	
7966.00	32.470	79.950	7058.47	35.81	-36.70	3412.53	1645206.42	14553781.23	40°04'27.396"N	104°58'58.362"W	1.19	

REFERENCE WELLPATH IDENTIFICATION			
Operator	KERR-MCGEE OIL & GAS ONSHORE LP (WA)	Slot	SLOT#25 MJOLNIR 3-5HZ (492'FSL & 1086'FWL,SEC.03)
Area	COLORADO	Well	MJOLNIR 3-5HZ
Field	WELD COUNTY (UTM/TRUE NORTH)	Wellbore	MJOLNIR 3-5HZ AWB
Facility	SEC.03-T1N-R68W		

WELLPATH DATA (223 stations) † = interpolated/extrapolated station												
MD [ft]	Inclination [°]	Azimuth [°]	TVD [ft]	Vert Sect [ft]	North [ft]	East [ft]	Grid East [US ft]	Grid North [US ft]	Latitude	Longitude	DLS [°/100ft]	Comments
8055.00	31.710	79.500	7133.87	27.36	-28.27	3459.05	1645252.93	14553789.66	40°04'27.479"N	104°58'57.763"W	0.90	
8144.00	31.300	79.420	7209.75	18.84	-19.76	3504.78	1645298.63	14553798.16	40°04'27.563"N	104°58'57.175"W	0.46	
8168.00†	29.965	84.305	7230.41	17.10	-18.02	3516.87	1645310.72	14553799.90	40°04'27.580"N	104°58'57.020"W	11.76	KOP
8234.00	27.370	99.610	7288.39	17.99	-18.92	3548.28	1645342.12	14553799.01	40°04'27.571"N	104°58'56.616"W	11.76	
8323.00	30.270	124.860	7366.65	34.28	-35.22	3587.01	1645380.83	14553782.71	40°04'27.410"N	104°58'56.117"W	13.96	
8412.00	39.140	128.310	7439.75	64.57	-65.52	3627.54	1645421.35	14553752.43	40°04'27.111"N	104°58'55.596"W	10.20	
8502.00	45.640	136.550	7506.24	105.60	-106.56	3672.04	1645465.83	14553711.41	40°04'26.705"N	104°58'55.024"W	9.49	
8591.00	51.410	145.450	7565.22	157.44	-158.41	3713.73	1645507.50	14553659.58	40°04'26.193"N	104°58'54.488"W	9.90	
8681.00	55.860	153.940	7618.64	219.96	-220.94	3750.10	1645543.86	14553597.08	40°04'25.575"N	104°58'54.020"W	9.06	
8726.00†	58.570	155.125	7643.00	254.11	-255.10	3766.36	1645560.12	14553562.94	40°04'25.237"N	104°58'53.811"W	6.42	ENTER LANDBOX (237'FSL & 460'FEL,SEC.03) 40.0736770 -104.9816141
8770.00	61.230	156.220	7665.07	288.79	-289.78	3782.03	1645575.79	14553528.27	40°04'24.894"N	104°58'53.609"W	6.42	
8860.00	64.890	159.900	7705.85	363.19	-364.19	3811.96	1645605.71	14553453.89	40°04'24.159"N	104°58'53.224"W	5.46	
8950.00	67.080	166.930	7742.51	441.92	-442.92	3835.36	1645629.11	14553375.19	40°04'23.381"N	104°58'52.923"W	7.54	
9039.00	70.780	174.710	7774.54	523.82	-524.82	3848.53	1645642.27	14553293.32	40°04'22.571"N	104°58'52.754"W	9.15	
9129.00	79.110	177.750	7797.91	610.45	-611.46	3854.19	1645647.94	14553206.72	40°04'21.715"N	104°58'52.682"W	9.81	
9135.00†	79.680	177.824	7799.01	616.34	-617.35	3854.42	1645648.17	14553200.83	40°04'21.657"N	104°58'52.679"W	9.58	LANDING (125'FNL & 372'FEL,SEC.10) 40.0726825 -104.9812996
9218.00	87.570	178.820	7808.22	698.73	-699.74	3856.83	1645650.58	14553118.48	40°04'20.843"N	104°58'52.648"W	9.58	
9293.00†	87.831	178.449	7811.23	773.65	-774.66	3858.62	1645652.37	14553043.59	40°04'20.103"N	104°58'52.625"W	0.60	EXIT RADIUS HEEL (283'FNL & 368'FEL,SEC.10) 40.0722507 -104.9812847
9307.00	87.880	178.380	7811.75	787.63	-788.64	3859.00	1645652.75	14553029.61	40°04'19.964"N	104°58'52.620"W	0.60	
9397.00	87.880	178.990	7815.08	877.55	-878.56	3861.07	1645654.82	14552939.73	40°04'19.076"N	104°58'52.594"W	0.68	
9486.00	88.090	178.460	7818.21	966.47	-967.48	3863.05	1645656.81	14552850.85	40°04'18.197"N	104°58'52.568"W	0.64	
9576.00	89.570	179.230	7820.05	1056.43	-1057.44	3864.86	1645658.62	14552760.92	40°04'17.308"N	104°58'52.545"W	1.85	
9665.00	90.120	179.060	7820.29	1145.42	-1146.43	3866.19	1645659.96	14552671.97	40°04'16.429"N	104°58'52.528"W	0.65	
9755.00	89.940	179.950	7820.24	1235.41	-1236.42	3866.96	1645660.74	14552582.01	40°04'15.539"N	104°58'52.519"W	1.01	
9844.00	90.030	180.120	7820.26	1324.41	-1325.42	3866.91	1645660.69	14552493.05	40°04'14.660"N	104°58'52.519"W	0.22	
10024.00	90.060	180.190	7820.12	1504.41	-1505.42	3866.42	1645660.21	14552313.12	40°04'12.881"N	104°58'52.526"W	0.04	
10113.00	90.090	180.020	7820.01	1593.41	-1594.42	3866.26	1645660.05	14552224.15	40°04'12.001"N	104°58'52.528"W	0.19	
10203.00	90.220	179.660	7819.76	1683.41	-1684.42	3866.51	1645660.31	14552134.19	40°04'11.112"N	104°58'52.525"W	0.43	
10292.00	90.090	179.860	7819.52	1772.41	-1773.42	3866.88	1645660.69	14552045.23	40°04'10.233"N	104°58'52.521"W	0.27	
10382.00	89.910	179.960	7819.52	1862.41	-1863.42	3867.03	1645660.83	14551955.27	40°04'09.343"N	104°58'52.519"W	0.23	
10471.00	89.880	179.570	7819.69	1951.41	-1952.42	3867.39	1645661.20	14551866.30	40°04'08.464"N	104°58'52.515"W	0.44	
10561.00	89.970	179.760	7819.80	2041.41	-2042.42	3867.92	1645661.73	14551776.34	40°04'07.574"N	104°58'52.508"W	0.23	
10650.00	90.090	180.150	7819.76	2130.40	-2131.42	3867.99	1645661.81	14551687.38	40°04'06.695"N	104°58'52.507"W	0.46	
10740.00	91.320	180.040	7818.65	2220.40	-2221.41	3867.84	1645661.67	14551597.42	40°04'05.805"N	104°58'52.509"W	1.37	
10829.00	90.580	179.940	7817.17	2309.38	-2310.40	3867.85	1645661.69	14551508.47	40°04'04.926"N	104°58'52.509"W	0.84	
10917.00	90.520	179.770	7816.33	2397.38	-2398.39	3868.08	1645661.91	14551420.51	40°04'04.056"N	104°58'52.507"W	0.20	
11007.00	89.910	179.570	7815.99	2487.38	-2488.39	3868.59	1645662.44	14551330.55	40°04'03.167"N	104°58'52.500"W	0.71	
11096.00	90.090	179.900	7815.99	2576.38	-2577.39	3869.01	1645662.85	14551241.58	40°04'02.288"N	104°58'52.495"W	0.42	
11185.00	89.910	179.980	7815.99	2665.37	-2666.39	3869.10	1645662.95	14551152.62	40°04'01.408"N	104°58'52.494"W	0.22	
11276.00	89.820	180.220	7816.21	2756.37	-2757.39	3868.94	1645662.80	14551061.66	40°04'00.509"N	104°58'52.496"W	0.28	
11366.00	89.820	180.960	7816.49	2846.37	-2847.38	3868.01	1645661.88	14550971.70	40°03'59.619"N	104°58'52.508"W	0.82	
11455.00	89.720	180.790	7816.85	2935.36	-2936.37	3866.65	1645660.52	14550882.75	40°03'58.740"N	104°58'52.526"W	0.22	
11544.00	90.460	181.040	7816.71	3024.35	-3025.36	3865.23	1645659.11	14550793.79	40°03'57.861"N	104°58'52.544"W	0.88	
11633.00	90.520	183.540	7815.94	3113.27	-3114.28	3861.68	1645655.56	14550704.91	40°03'56.982"N	104°58'52.590"W	2.81	
11723.00	90.090	183.570	7815.47	3203.09	-3204.10	3856.10	1645649.98	14550615.12	40°03'56.094"N	104°58'52.662"W	0.48	

REFERENCE WELLPATH IDENTIFICATION			
Operator	KERR-MCGEE OIL & GAS ONSHORE LP (WA)	Slot	SLOT#25 MJOLNIR 3-5HZ (492'FSL & 1086'FWL,SEC.03)
Area	COLORADO	Well	MJOLNIR 3-5HZ
Field	WELD COUNTY (UTM/TRUE NORTH)	Wellbore	MJOLNIR 3-5HZ AWP
Facility	SEC.03-T1N-R68W		

WELLPATH DATA (223 stations)

MD [ft]	Inclination [°]	Azimuth [°]	TVD [ft]	Vert Sect [ft]	North [ft]	East [ft]	Grid East [US ft]	Grid North [US ft]	Latitude	Longitude	DLS [°/100ft]	Comments
11812.00	90.340	180.830	7815.13	3292.02	-3293.03	3852.68	1645646.57	14550526.23	40°03'55.215"N	104°58'52.706"W	3.09	
11901.00	90.340	181.370	7814.60	3381.00	-3382.01	3850.97	1645644.87	14550437.29	40°03'54.336"N	104°58'52.729"W	0.61	
11991.00	90.250	181.270	7814.14	3470.98	-3471.98	3848.90	1645642.80	14550347.35	40°03'53.447"N	104°58'52.755"W	0.15	
12080.00	90.250	181.450	7813.75	3559.95	-3560.96	3846.79	1645640.70	14550258.41	40°03'52.568"N	104°58'52.783"W	0.20	
12169.00	90.030	178.170	7813.53	3648.94	-3649.95	3847.08	1645641.00	14550169.46	40°03'51.688"N	104°58'52.779"W	3.69	
12259.00	90.220	178.070	7813.34	3738.89	-3739.90	3850.03	1645643.95	14550079.54	40°03'50.799"N	104°58'52.741"W	0.24	
12348.00	89.600	177.490	7813.48	3827.82	-3828.83	3853.48	1645647.40	14549990.65	40°03'49.921"N	104°58'52.697"W	0.95	
12437.00	89.020	177.270	7814.55	3916.72	-3917.73	3857.55	1645651.48	14549901.78	40°03'49.042"N	104°58'52.645"W	0.70	
12527.00	89.110	177.760	7816.02	4006.62	-4007.63	3861.45	1645655.38	14549811.92	40°03'48.154"N	104°58'52.595"W	0.55	
12616.00	89.260	177.870	7817.28	4095.55	-4096.56	3864.84	1645658.78	14549723.03	40°03'47.275"N	104°58'52.552"W	0.21	
12706.00	89.200	177.550	7818.49	4185.47	-4186.48	3868.44	1645662.38	14549633.14	40°03'46.386"N	104°58'52.505"W	0.36	
12795.00	89.110	179.940	7819.81	4274.43	-4275.44	3870.39	1645664.33	14549544.21	40°03'45.507"N	104°58'52.481"W	2.69	
12884.00	88.770	181.130	7821.45	4363.41	-4364.42	3869.56	1645663.50	14549455.27	40°03'44.628"N	104°58'52.491"W	1.39	
12974.00	88.800	181.420	7823.36	4453.36	-4454.38	3867.56	1645661.51	14549365.35	40°03'43.739"N	104°58'52.517"W	0.32	
13063.00	88.740	181.610	7825.27	4542.31	-4543.33	3865.20	1645659.16	14549276.44	40°03'42.860"N	104°58'52.548"W	0.22	
13243.00	88.800	181.220	7829.14	4722.22	-4723.23	3860.76	1645654.73	14549096.61	40°03'41.082"N	104°58'52.605"W	0.22	
13332.00	88.800	181.760	7831.00	4811.17	-4812.18	3858.45	1645652.42	14549007.69	40°03'40.203"N	104°58'52.635"W	0.61	
13422.00	89.780	180.790	7832.11	4901.14	-4902.15	3856.44	1645650.42	14548917.76	40°03'39.314"N	104°58'52.661"W	1.53	
13511.00	89.780	181.030	7832.46	4990.13	-4991.14	3855.03	1645649.02	14548828.81	40°03'38.434"N	104°58'52.680"W	0.27	
13601.00	89.780	181.170	7832.80	5080.11	-5081.12	3853.30	1645647.29	14548738.86	40°03'37.545"N	104°58'52.702"W	0.16	
13690.00	90.030	181.620	7832.95	5169.08	-5170.09	3851.14	1645645.13	14548649.92	40°03'36.666"N	104°58'52.730"W	0.58	
13779.00	90.000	181.510	7832.93	5258.05	-5259.06	3848.71	1645642.71	14548560.99	40°03'35.787"N	104°58'52.761"W	0.13	
13869.00	89.660	181.280	7833.19	5348.02	-5349.03	3846.51	1645640.52	14548471.05	40°03'34.898"N	104°58'52.790"W	0.46	
13958.00	89.690	181.640	7833.70	5436.99	-5438.00	3844.25	1645638.26	14548382.12	40°03'34.018"N	104°58'52.819"W	0.41	
14048.00	90.550	181.370	7833.51	5526.96	-5527.97	3841.88	1645635.90	14548292.19	40°03'33.129"N	104°58'52.850"W	1.00	
14137.00	90.430	181.850	7832.75	5615.92	-5616.93	3839.38	1645633.41	14548203.26	40°03'32.250"N	104°58'52.882"W	0.56	
14227.00	90.400	181.760	7832.10	5705.88	-5706.88	3836.55	1645630.58	14548113.35	40°03'31.361"N	104°58'52.919"W	0.11	
14316.00	90.280	179.150	7831.57	5794.87	-5795.87	3835.84	1645629.88	14548024.39	40°03'30.482"N	104°58'52.928"W	2.94	
14406.00	90.400	179.800	7831.03	5884.86	-5885.86	3836.67	1645630.71	14547934.44	40°03'29.593"N	104°58'52.918"W	0.73	
14495.00	90.680	179.560	7830.20	5973.85	-5974.86	3837.16	1645631.21	14547845.48	40°03'28.713"N	104°58'52.911"W	0.41	
14585.00	90.370	179.810	7829.37	6063.85	-6064.85	3837.66	1645631.71	14547755.52	40°03'27.824"N	104°58'52.905"W	0.44	
14674.00	90.340	179.440	7828.82	6152.85	-6153.85	3838.24	1645632.30	14547666.56	40°03'26.944"N	104°58'52.898"W	0.42	
14764.00	90.460	179.600	7828.19	6242.84	-6243.84	3838.99	1645633.06	14547576.60	40°03'26.055"N	104°58'52.888"W	0.22	
14853.00	90.150	179.510	7827.72	6331.84	-6332.84	3839.69	1645633.75	14547487.64	40°03'25.175"N	104°58'52.880"W	0.36	
14943.00	90.280	179.360	7827.38	6421.83	-6422.84	3840.57	1645634.64	14547397.68	40°03'24.286"N	104°58'52.868"W	0.22	
15032.00	90.340	179.680	7826.90	6510.83	-6511.83	3841.32	1645635.39	14547308.72	40°03'23.407"N	104°58'52.859"W	0.37	
15121.00	90.310	179.380	7826.39	6599.82	-6600.83	3842.05	1645636.13	14547219.76	40°03'22.527"N	104°58'52.850"W	0.34	
15211.00	90.490	179.620	7825.76	6689.81	-6690.82	3842.83	1645636.92	14547129.80	40°03'21.638"N	104°58'52.840"W	0.33	
15300.00	90.280	179.410	7825.17	6778.81	-6779.82	3843.59	1645637.68	14547040.85	40°03'20.758"N	104°58'52.830"W	0.33	
15389.00	90.310	179.660	7824.71	6867.80	-6868.81	3844.31	1645638.40	14546951.89	40°03'19.879"N	104°58'52.821"W	0.28	
15479.00	90.180	179.490	7824.32	6957.80	-6958.81	3844.98	1645639.08	14546861.92	40°03'18.989"N	104°58'52.813"W	0.24	
15568.00	90.280	179.440	7823.97	7046.80	-7047.80	3845.81	1645639.91	14546772.97	40°03'18.110"N	104°58'52.802"W	0.13	
15657.00	90.310	179.640	7823.51	7135.79	-7136.80	3846.52	1645640.63	14546684.01	40°03'17.231"N	104°58'52.793"W	0.23	
15747.00	90.400	179.620	7822.95	7225.79	-7226.80	3847.10	1645641.22	14546594.05	40°03'16.341"N	104°58'52.786"W	0.10	
15836.00	90.250	179.090	7822.45	7314.78	-7315.79	3848.11	1645642.22	14546505.09	40°03'15.462"N	104°58'52.773"W	0.62	

REFERENCE WELLPATH IDENTIFICATION			
Operator	KERR-MCGEE OIL & GAS ONSHORE LP (WA)	Slot	SLOT#25 MJOLNIR 3-5HZ (492'FSL & 1086'FWL,SEC.03)
Area	COLORADO	Well	MJOLNIR 3-5HZ
Field	WELD COUNTY (UTM/TRUE NORTH)	Wellbore	MJOLNIR 3-5HZ AWB
Facility	SEC.03-T1N-R68W		

WELLPATH DATA (223 stations) † = interpolated/extrapolated station												
MD [ft]	Inclination [°]	Azimuth [°]	TVD [ft]	Vert Sect [ft]	North [ft]	East [ft]	Grid East [US ft]	Grid North [US ft]	Latitude	Longitude	DLS °/100ft	Comments
15925.00	90.220	179.420	7822.08	7403.77	-7404.78	3849.26	1645643.38	14546416.13	40°03'14.582"N	104°58'52.759"W	0.37	
16015.00	90.220	179.450	7821.74	7493.77	-7494.77	3850.15	1645644.28	14546326.17	40°03'13.693"N	104°58'52.747"W	0.03	
16104.00	90.400	179.400	7821.25	7582.76	-7583.77	3851.04	1645645.17	14546237.22	40°03'12.813"N	104°58'52.736"W	0.21	
16194.00	90.370	179.450	7820.65	7672.75	-7673.76	3851.95	1645646.08	14546147.26	40°03'11.924"N	104°58'52.725"W	0.06	
16283.00	90.280	179.400	7820.14	7761.75	-7762.76	3852.84	1645646.98	14546058.30	40°03'11.045"N	104°58'52.713"W	0.12	
16373.00	90.280	179.500	7819.70	7851.74	-7852.75	3853.70	1645647.85	14545968.34	40°03'10.155"N	104°58'52.702"W	0.11	
16462.00	90.370	179.900	7819.20	7940.74	-7941.75	3854.17	1645648.32	14545879.38	40°03'09.276"N	104°58'52.696"W	0.46	
16552.00	89.970	178.950	7818.93	8030.73	-8031.74	3855.07	1645649.23	14545789.42	40°03'08.386"N	104°58'52.685"W	1.15	
16641.00	90.090	179.290	7818.89	8119.72	-8120.73	3856.44	1645650.60	14545700.47	40°03'07.507"N	104°58'52.668"W	0.41	
16730.00	89.970	179.100	7818.84	8208.71	-8209.72	3857.69	1645651.85	14545611.51	40°03'06.628"N	104°58'52.652"W	0.25	
16820.00	90.060	179.630	7818.82	8298.71	-8299.72	3858.69	1645652.85	14545521.56	40°03'05.738"N	104°58'52.639"W	0.60	
16909.00	90.030	179.190	7818.75	8387.70	-8388.71	3859.60	1645653.78	14545432.60	40°03'04.859"N	104°58'52.627"W	0.50	
16998.00	90.120	179.160	7818.63	8476.69	-8477.70	3860.89	1645655.06	14545343.64	40°03'03.979"N	104°58'52.611"W	0.11	
17088.00	90.120	179.170	7818.44	8566.68	-8567.69	3862.20	1645656.38	14545253.69	40°03'03.090"N	104°58'52.595"W	0.01	
17177.00	90.090	178.790	7818.28	8655.67	-8656.68	3863.78	1645657.97	14545164.74	40°03'02.211"N	104°58'52.574"W	0.43	
17267.00	90.120	178.870	7818.11	8745.65	-8746.66	3865.62	1645659.81	14545074.79	40°03'01.321"N	104°58'52.551"W	0.09	
17356.00	90.060	177.650	7817.97	8834.60	-8835.62	3868.32	1645662.51	14544985.87	40°03'00.442"N	104°58'52.516"W	1.37	
17446.00	89.320	178.350	7818.46	8924.55	-8925.56	3871.46	1645665.66	14544895.97	40°02'59.554"N	104°58'52.476"W	1.13	
17536.00	89.260	177.660	7819.57	9014.48	-9015.50	3874.59	1645668.80	14544806.06	40°02'58.665"N	104°58'52.436"W	0.77	
17625.00	88.150	177.930	7821.59	9103.39	-9104.41	3878.02	1645672.22	14544717.19	40°02'57.786"N	104°58'52.392"W	1.28	
17715.00	88.800	180.370	7823.98	9193.34	-9194.36	3879.35	1645673.56	14544627.28	40°02'56.897"N	104°58'52.375"W	2.80	
17893.00	90.150	179.910	7825.61	9371.33	-9372.35	3878.92	1645673.14	14544449.36	40°02'55.138"N	104°58'52.381"W	0.80	
17983.00	90.120	179.690	7825.40	9461.33	-9462.34	3879.23	1645673.46	14544359.40	40°02'54.249"N	104°58'52.377"W	0.25	
18072.00	90.090	179.590	7825.24	9550.33	-9551.34	3879.79	1645674.02	14544270.43	40°02'53.369"N	104°58'52.370"W	0.12	
18162.00	90.520	179.370	7824.76	9640.32	-9641.34	3880.61	1645674.84	14544180.48	40°02'52.480"N	104°58'52.360"W	0.54	
18251.00	90.650	179.450	7823.85	9729.31	-9730.33	3881.52	1645675.76	14544091.52	40°02'51.601"N	104°58'52.348"W	0.17	
18341.00	90.490	181.700	7822.95	9819.30	-9820.31	3880.62	1645674.86	14544001.57	40°02'50.711"N	104°58'52.360"W	2.51	
18430.00	90.680	181.440	7822.05	9908.26	-9909.28	3878.18	1645672.43	14543912.65	40°02'49.832"N	104°58'52.392"W	0.36	
18519.00	90.520	181.190	7821.11	9997.23	-9998.25	3876.14	1645670.39	14543823.71	40°02'48.953"N	104°58'52.418"W	0.33	
18608.00	90.520	181.290	7820.31	10086.21	-10087.22	3874.21	1645668.47	14543734.77	40°02'48.074"N	104°58'52.443"W	0.11	
18698.00	90.580	181.270	7819.44	10176.18	-10177.20	3872.20	1645666.47	14543644.83	40°02'47.185"N	104°58'52.469"W	0.07	
18787.00	90.060	181.360	7818.95	10265.16	-10266.17	3870.16	1645664.43	14543555.89	40°02'46.305"N	104°58'52.495"W	0.59	
18876.00	90.030	181.710	7818.88	10354.13	-10355.14	3867.78	1645662.06	14543466.96	40°02'45.426"N	104°58'52.526"W	0.39	
18965.00	90.150	181.760	7818.74	10443.09	-10444.10	3865.08	1645659.37	14543378.04	40°02'44.547"N	104°58'52.561"W	0.15	
19055.00	90.120	181.290	7818.52	10533.05	-10534.07	3862.69	1645656.98	14543288.11	40°02'43.658"N	104°58'52.592"W	0.52	
19144.00	89.940	181.260	7818.48	10622.03	-10623.04	3860.71	1645655.00	14543199.16	40°02'42.779"N	104°58'52.618"W	0.21	
19233.00	90.030	180.980	7818.50	10711.02	-10712.03	3858.97	1645653.27	14543110.22	40°02'41.899"N	104°58'52.640"W	0.33	
19311.00†	90.056	181.059	7818.44	10789.00	-10790.01	3857.58	1645651.89	14543032.26	40°02'41.129"N	104°58'52.658"W	0.11	ENTER RADIUS TOE (297'FSL & 353'FEL, SEC.15) 40.0447579 -104.9812940
19322.00	90.060	181.070	7818.43	10800.00	-10801.01	3857.38	1645651.68	14543021.27	40°02'41.020"N	104°58'52.661"W	0.11	
19412.00	90.000	181.090	7818.38	10889.99	-10891.00	3855.68	1645649.99	14542931.32	40°02'40.131"N	104°58'52.683"W	0.07	
19501.00	90.060	181.030	7818.34	10978.97	-10979.98	3854.03	1645648.35	14542842.37	40°02'39.251"N	104°58'52.704"W	0.10	
19533.00	89.970	180.950	7818.33	11010.97	-11011.98	3853.48	1645647.80	14542810.39	40°02'38.935"N	104°58'52.711"W	0.38	LAST BHGE MWD+IFR1+SC SURVEY
19557.00	89.970	180.950	7818.34	11034.96	-11035.97	3853.08	1645647.40	14542786.40	40°02'38.698"N	104°58'52.717"W	0.00	PTB (51'FSL & 357'FEL, SEC.15) 40.0440828 -104.9813102

REFERENCE WELLPATH IDENTIFICATION			
Operator	KERR-MCGEE OIL & GAS ONSHORE LP (WA)	Slot	SLOT#25 MJOLNIR 3-5HZ (492'FSL & 1086'FWL,SEC.03)
Area	COLORADO	Well	MJOLNIR 3-5HZ
Field	WELD COUNTY (UTM/TRUE NORTH)	Wellbore	MJOLNIR 3-5HZ AWB
Facility	SEC.03-T1N-R68W		

HOLE & CASING SECTIONS - Ref Wellbore: MJOLNIR 3-5HZ AWB Ref Wellpath: MJOLNIR 3-5HZ AWP									
String/Diameter	Start MD [ft]	End MD [ft]	Interval [ft]	Start TVD [ft]	End TVD [ft]	Start N/S [ft]	Start E/W [ft]	End N/S [ft]	End E/W [ft]
9.625in Casing Surface	26.00	1921.00	1895.00	26.00	1865.16	0.00	0.00	-23.05	377.81

TARGETS								
Name	TVD [ft]	North [ft]	East [ft]	Grid East [US ft]	Grid North [US ft]	Latitude	Longitude	Shape
SEC.10-T1N-R68W	2.00	59.74	0.28	1641795.54	14553877.44	40°04'28.351"N	104°59'42.256"W	polygon
SEC.15-T1N-R68W	2.00	59.74	0.28	1641795.54	14553877.44	40°04'28.351"N	104°59'42.256"W	polygon
MJOLNIR 3-5HZ HEEL REV-1(50'FNL & 371'FEL,SEC.10)	7776.00	-547.94	3855.40	1645649.14	14553270.22	40°04'22.343"N	104°58'52.666"W	point
MJOLNIR 3-5HZ BHL REV-1(51'FSL & 357'FEL,SEC.15)	7792.00	-11036.27	3852.59	1645646.91	14542786.10	40°02'38.695"N	104°58'52.723"W	point
MJOLNIR 3-5HZ LANDBOX	7830.00	0.00	0.00	1641795.26	14553817.72	40°04'27.761"N	104°59'42.259"W	polygon
MJOLNIR 3-5HZ RADIUS 1	7830.00	-498.76	4226.21	1646019.80	14553319.40	40°04'22.828"N	104°58'47.896"W	polygon
MJOLNIR 3-5HZ RADIUS 2	7830.00	-11085.71	4209.02	1646003.20	14542736.70	40°02'38.206"N	104°58'48.140"W	polygon

WELLPATH COMPOSITION - Ref Wellbore: MJOLNIR 3-5HZ AWB Ref Wellpath: MJOLNIR 3-5HZ AWP				
Start MD [ft]	End MD [ft]	Positional Uncertainty Model	Log Name/Comment	Wellbore
26.00	1881.00	Custom APC_ISCWSA REV 2 MWD+IFR1 (approximation)	Custom APC ISCWSA Rev-2 MWD+IFR1 <137 - 1881>	MJOLNIR 3-5HZ AWB
1881.00	19533.00	Custom APC_ISCWSA REV 2 MWD+IFR1+SC (approximation)	BHGE Custom APC ISCWSA Rev-2 MWD+IFR1+SC <1977 - 19533>	MJOLNIR 3-5HZ AWB
19533.00	19557.00	Blind Drilling (std)	Projection to bit	MJOLNIR 3-5HZ AWB

REFERENCE WELLPATH IDENTIFICATION			
Operator	KERR-MCGEE OIL & GAS ONSHORE LP (WA)	Slot	SLOT#25 MJOLNIR 3-5HZ (492'FSL & 1086'FWL,SEC.03)
Area	COLORADO	Well	MJOLNIR 3-5HZ
Field	WELD COUNTY (UTM/TRUE NORTH)	Wellbore	MJOLNIR 3-5HZ AWB
Facility	SEC.03-T1N-R68W		

WELLPATH COMMENTS				
MD [ft]	Inclination [°]	Azimuth [°]	TVD [ft]	Comment
137.00	1.010	293.240	136.99	FIRST SURFACE MWD+IFR1 SURVEY
1881.00	22.150	93.370	1828.13	LAST SURFACE MWD+IFR1 SURVEY
1977.00	22.440	93.670	1916.96	FIRST BHGE MWD+IFR1+SC SURVEY
8168.00	29.965	84.305	7230.41	KOP
8726.00	58.570	155.125	7643.00	ENTER LANDBOX (237'FSL & 460'FEL,SEC.03) 40.0736770 -104.9816141
9135.00	79.680	177.824	7799.01	LANDING (125'FNL & 372'FEL,SEC.10) 40.0726825 -104.9812996
9293.00	87.831	178.449	7811.23	EXIT RADIUS HEEL (283'FNL & 368'FEL,SEC.10) 40.0722507 -104.9812847
19311.00	90.056	181.059	7818.44	ENTER RADIUS TOE (297'FSL & 353'FEL,SEC.15) 40.0447579 -104.9812940
19533.00	89.970	180.950	7818.33	LAST BHGE MWD+IFR1+SC SURVEY
19557.00	89.970	180.950	7818.34	PTB (51'FSL & 357'FEL,SEC.15) 40.0440828 -104.9813102