

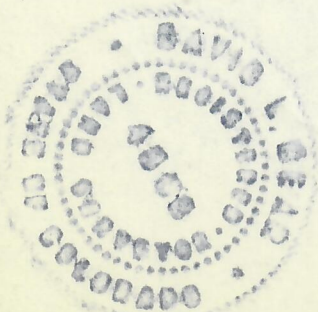
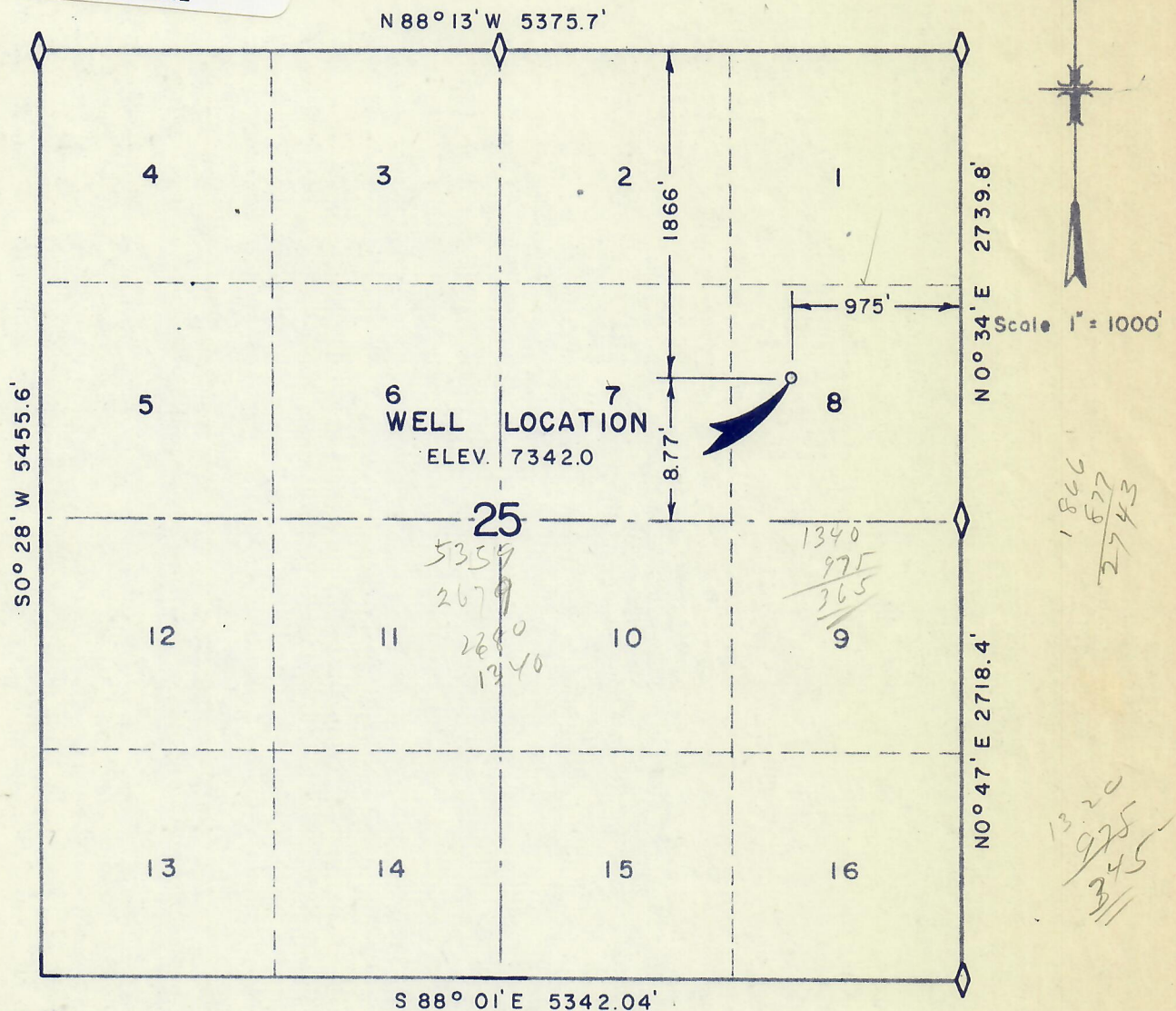
NOV 6 1974

WELL LOCATION  
975.0 FT.WEL.- 1866.0FT.S.N.L.  
SECTION 25, T6N R9OW 6TH.PM.

COLO. OIL & GAS CONS. COMM.



00213502



I, David L. Bear do hereby certify that this plat was plotted from notes of a field survey made under my direct responsibility, supervision and checking on October 30 1974.

David L. Bear  
Registered Land Surveyor

WESTERN ENGINEERS, INC.  
WELL LOCATION  
ATLANTIC RICHFIELD CO.  
VOLOSHIN ALTERNAT # 3  
MOFFAT COUNTY, COLORADO  
SURVEYED D.L.B. DRAWN G.L.A.  
GRAND JUNCTION, COLO. 10/31/74