

RECEIVED

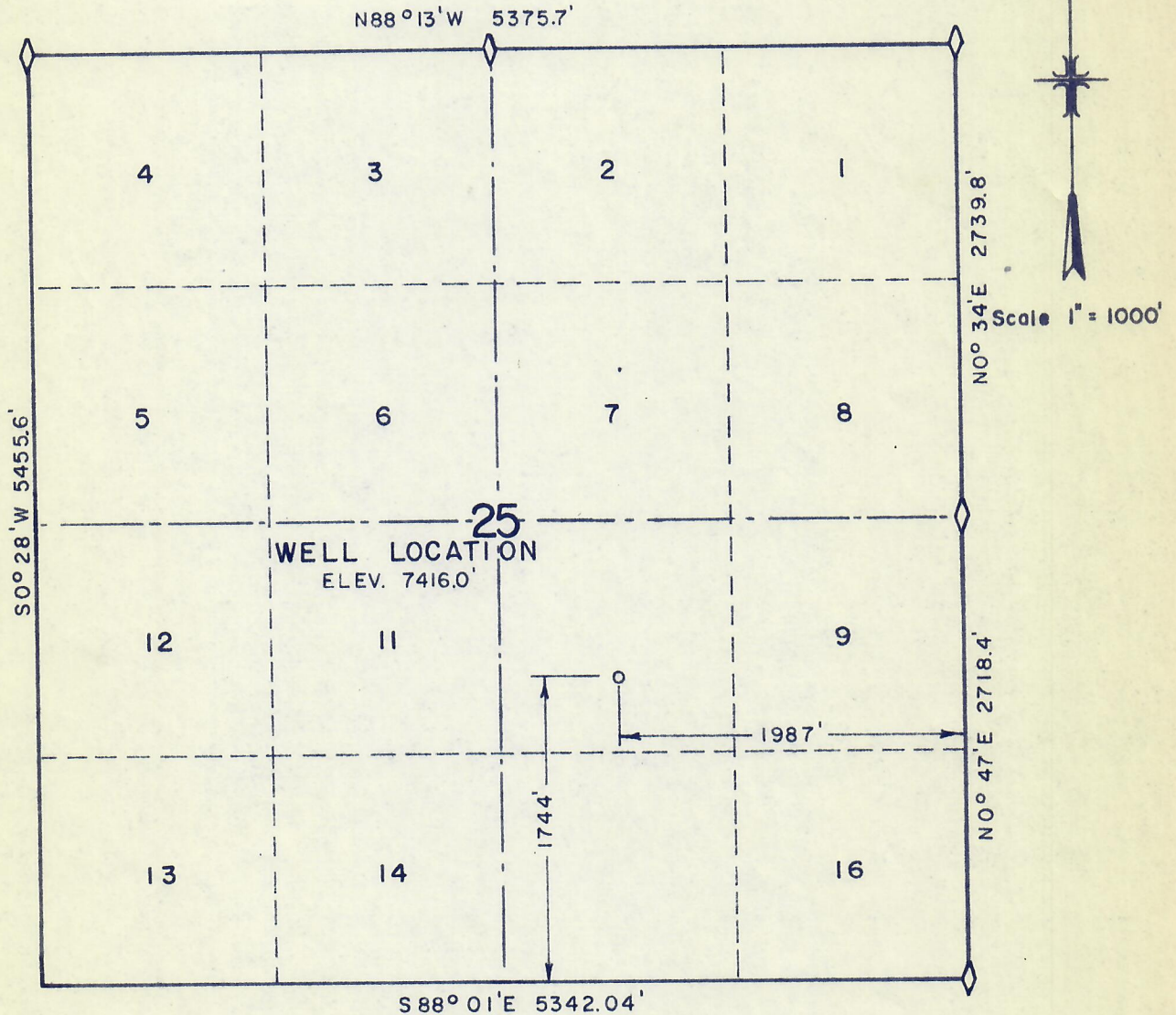
NOV 6 1974

WELL LOCATION  
1987.0 FT. W.E.L. - 1744.0 FT. N.S.L.  
SECTION 25, T6N R9W 6TH.P.M.

COLO. OIL & GAS CONS. COMM.



00197610



I, David L. Bear do hereby certify that this plat was plotted from notes of a field survey made under my direct responsibility, supervision and checking on October 30, 1974.

*David L. Bear*  
Registered Land Surveyor

WESTERN ENGINEERS, INC.  
WELL LOCATION

ATLANTIC RICHFIELD CO.  
VOLOSHIN ALTERNAT # 4  
MOFFAT COUNTY, COLORADO

SURVEYED D.L.B. DRAWN G.L.A.  
GRAND JUNCTION, COLO. 10/31/74

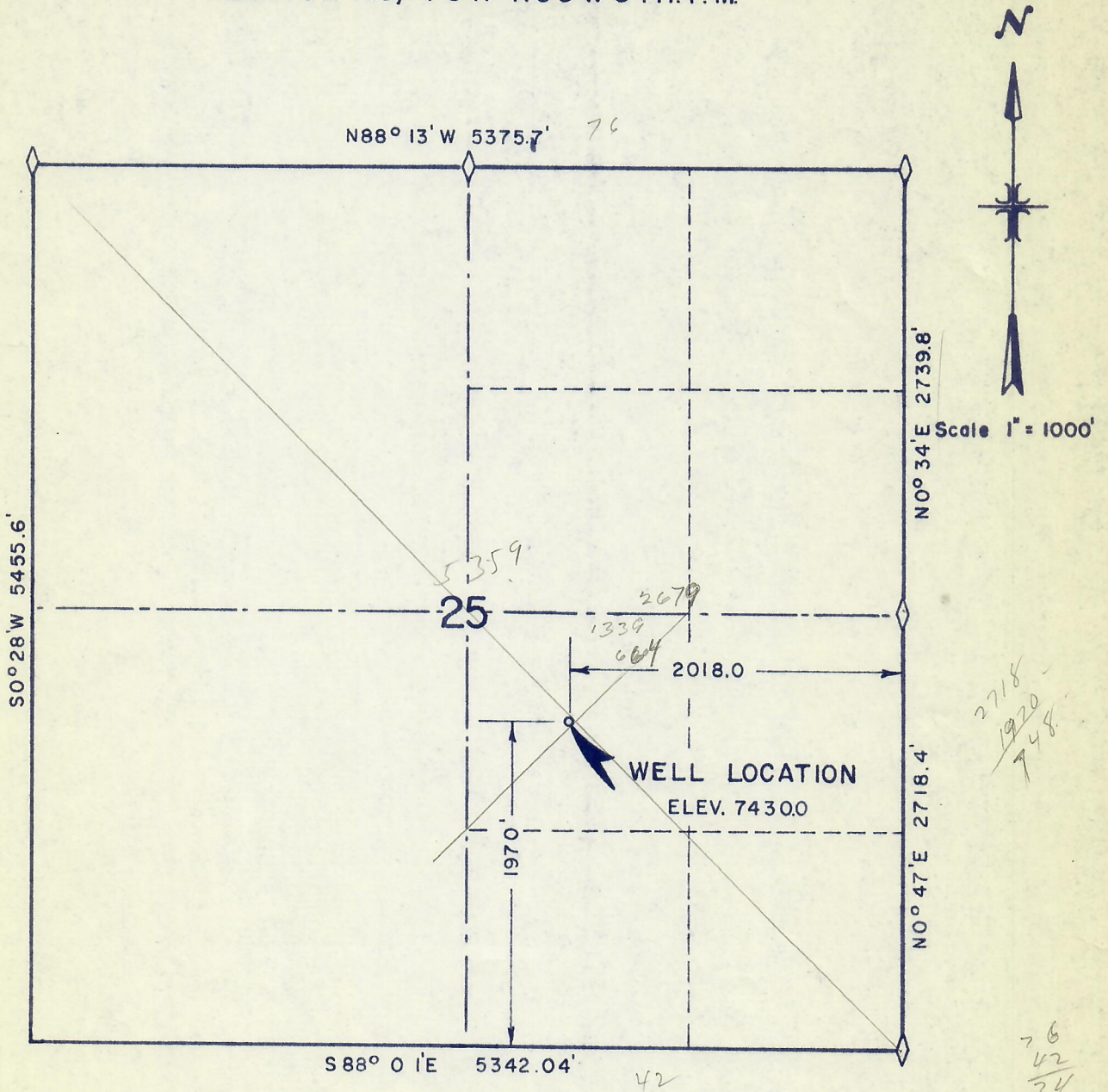


RECEIVED

OCT 25 1974

WELL LOCATION

1970.0 FT. N.S.L. - 2018.0 FT. W.E.L. COLO. OIL & GAS CONS. COMM.  
SECTION 25, T6 N R90 W 6TH.P.M.



74 921

I, David L. Bear do hereby certify that this plat was plotted from notes of a field survey made under my direct responsibility, supervision and checking on Oct 15, 1974.

*David L. Bear*  
Registered Land Surveyor

WESTERN ENGINEERS, INC.	
WELL LOCATION	
ATLANTIC RICHFIELD COMPANY	
VOLOSHIN #43	
MOFFAT COUNTY, COLORADO	
SURVEYED D.L.B.	DRAWN G.L.A.
GRAND JUNCTION, COLO. 10/16/74	