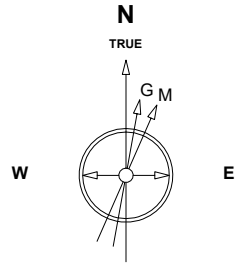


Great Western Operating Company, LLC

Location Colorado
Field Wattenburg
Installation Gus
Slot C10 - Gus LD 15-028HNX
Well Gus LD 15-028HNX
Wellbore Gus LD 15-028HNX (PWB)

Created by admin
Date plotted 24-Oct-2018
Plot reference is Gus LD 15-028HNX (PWB).
Ref wellpath is Gus LD 15-028HNX (PWP#1).
Coordinates are in Feet reference C10 - Gus LD 15-028HNX.
True Vertical Depths are reference Rig Datum.
Measured Depths are reference Rig Datum.
Rig Datum: Planned Datum #1
Rig Datum to Mean Sea Level: 5143.30 ft.
Plot North is aligned to TRUE North.



Oct-22-2018
EMM-2015 [2000.0-2020.0] Dip: 66.27 deg Field: 51954.5 nT
Lat: N39 57 11.9124 Long: W104 53 9.4056 Elev: 5123.30 ft
Magnetic North is 8.17 deg East of TRUE North
To correct azimuth from Magnetic to TRUE add 8.17 deg

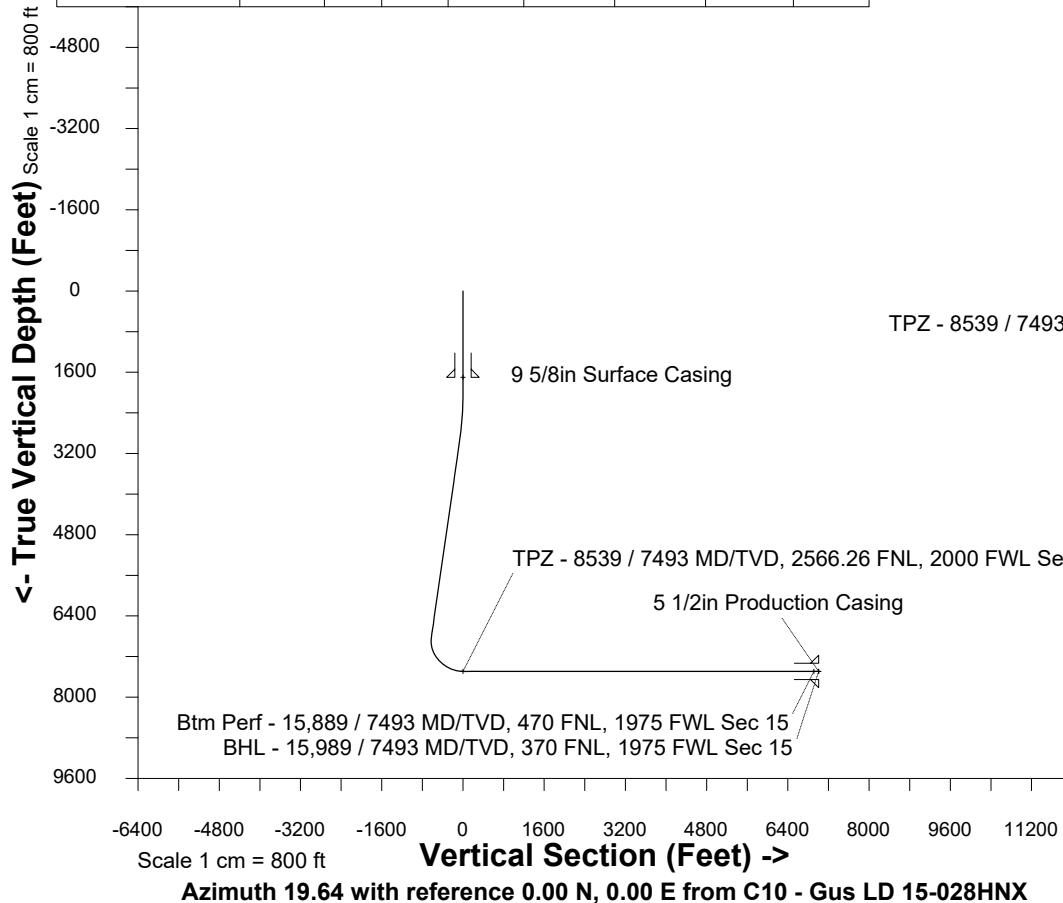
Scale 1 cm = 500 ft

East (Feet) ->

-7000 -6000 -5000 -4000 -3000 -2000 -1000 0 1000 2000 3000 4000 5000 6000

WELL PROFILE DATA

Point	MD	Inc	Azi	TVD	North	East	deg/100ft	V. Sect
Tie on	0.00	0.00	0.00	0.00	S 0.00	W 0.00		0.00
KOP	1995.00	0.00	124.13	1995.00	S 0.00	W 0.00	0.00	0.00
End of Build	2994.94	30.00	124.13	2949.87	S 143.53	E 211.79	3.00	-64.01
End of Hold	7475.25	30.00	124.13	6830.02	S 1400.20	E 2066.10	0.00	-624.47
Target TPZ - ...Sec 22	8539.00	90.00	359.80	7493.00	S 849.40	E 2380.30	10.00	-0.11
Target Btm Pe...Sec 15	15888.83	90.00	359.80	7493.00	N 6500.40	E 2354.93	0.00	6913.74
End of Turn	15890.78	90.00	360.00	7493.00	N 6502.34	E 2354.93	10.00	6915.57
T.D. & Target BHL... 15	15988.65	90.00	360.00	7493.00	N 6600.21	E 2354.92	0.00	7007.74



BHL - 15,989 / 7493 MD/TVD, 370 FNL, 1975 FWL Sec 15
Btm Perf - 15,889 / 7493 MD/TVD, 470 FNL, 1975 FWL Sec 15

TPZ - 8539 / 7493 MD/TVD, 2566.26 FNL, 2000 FWL Sec 22

