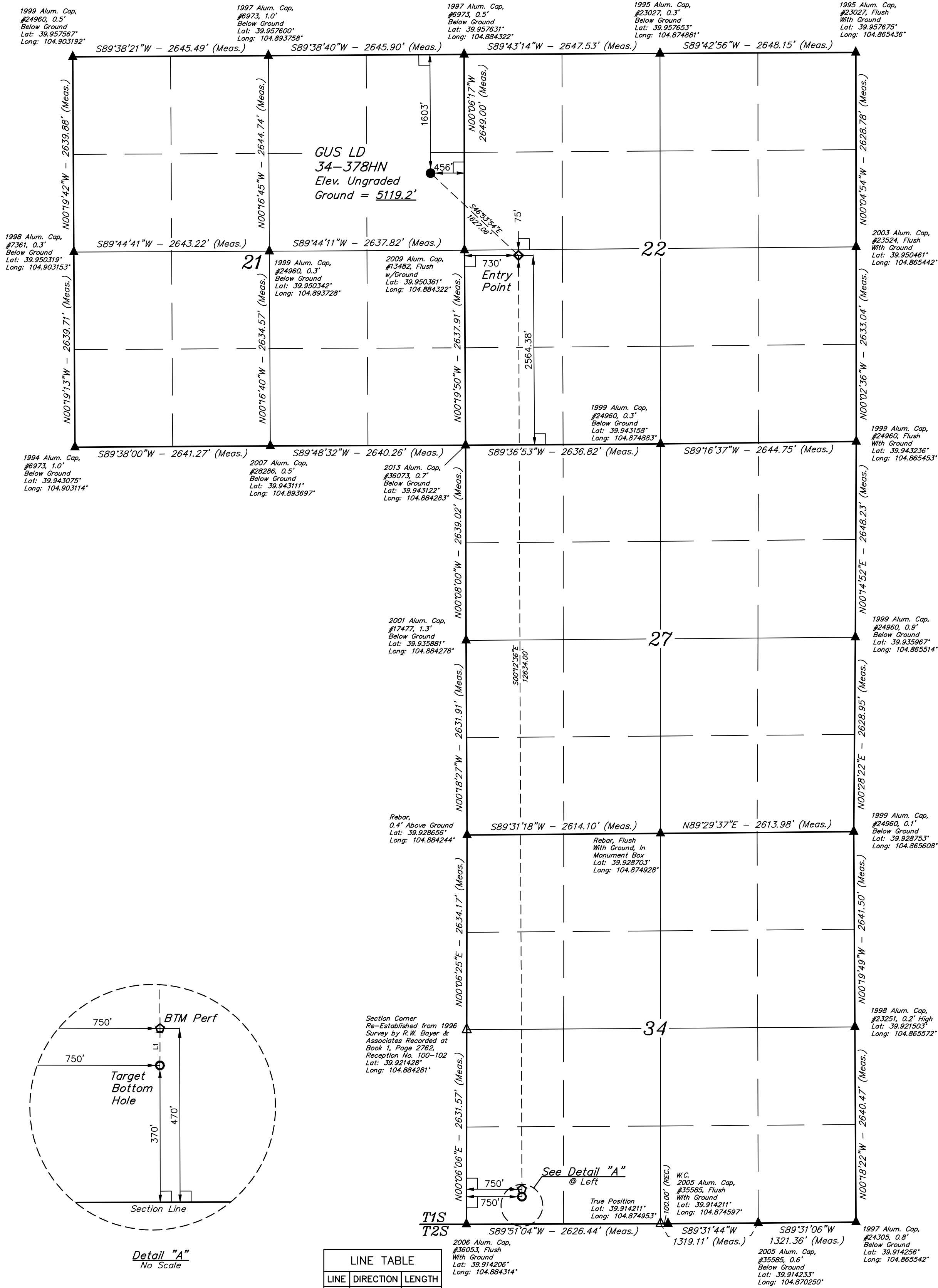


LEGEND:

- 90° SYMBOL
- PROPOSED WELLHEAD.
- ENTRY POINT.
- BTM PERF.
- TARGET BOTTOM HOLE.
- SECTION CORNERS LOCATED. (NAD 83)
- SECTION CORNERS RE-ESTABLISHED. (Not Set on Ground.) (NAD 83)

T1S, R67W, 6th P.M.



Detail "A"
No Scale

PDOP = 1.3

NAD 83 (SURFACE LOCATION)	NAD 83 (ENTRY POINT)	NAD 83 (BTM PERF)	NAD 83 (TARGET BOTTOM HOLE)
LATITUDE = 39°57'11.62" (39.953227)	LATITUDE = 39°57'00.61" (39.950170)	LATITUDE = 39°54'55.79" (39.915496)	LATITUDE = 39°54'54.80" (39.915222)
LONGITUDE = 104°53'09.41" (104.885946)	LONGITUDE = 104°52'54.18" (104.881717)	LONGITUDE = 104°52'53.88" (104.881634)	LONGITUDE = 104°52'53.89" (104.881635)
NAD 27 (SURFACE LOCATION)	NAD 27 (ENTRY POINT)	NAD 27 (BTM PERF)	NAD 27 (TARGET BOTTOM HOLE)
LATITUDE = 39°57'11.67" (39.953242)	LATITUDE = 39°57'00.67" (39.950185)	LATITUDE = 39°54'55.84" (39.915511)	LATITUDE = 39°54'54.85" (39.915237)
LONGITUDE = 104°53'07.49" (104.885415)	LONGITUDE = 104°52'52.27" (104.881186)	LONGITUDE = 104°52'51.97" (104.881103)	LONGITUDE = 104°52'51.97" (104.881104)

BASIS OF BEARINGS
BASIS OF BEARINGS IS A G.P.S. OBSERVATION

BASIS OF ELEVATION
BENCHMARK JR 53 5026 LOCATED IN THE SW 1/4 SE 1/4 OF SECTION 18, T1N, R68W, 6th P.M., TAKEN FROM 1988 PUBLISHED DATUM BY THE UNITED STATES DEPARTMENT OF THE INTERIOR, GEOLOGICAL SURVEY AS BEING 5028 FEET.

UEL, LLC
Corporate Office * 85 South 200 East
Vernal, UT 84078 * (435) 789-1017



REV: 1 07-27-18 B.L.B. (RELOCATE WELL HEADS, EP & TBH, ADDED BTM PERF)

GREAT WESTERN OPERATING COMPANY
GUS LD 34-378HN
SE 1/4 NE 1/4, SECTION 21, T1S, R67W, 6th P.M.
ADAMS COUNTY, COLORADO

SURVEYED BY	GREG WEIMER, D.D.	06-12-18	SCALE
DRAWN BY	K.B.	01-23-17	1" = 1000'

WELL LOCATION PLAT

CERTIFICATE OF RECORD
THIS IS TO CERTIFY THAT THE ABOVE PLAT IS A TRUE AND CORRECT COPY OF THE ORIGINAL PLAT AS FILED IN THE PUBLIC RECORDS OF THE STATE OF COLORADO, AND THAT THE SAME ARE TRUE AND CORRECT TO THE BEST OF MY KNOWLEDGE AND BELIEF.

RECORDED LAND SURVEYOR
REGISTRATION NO. 28285
STATE OF COLORADO
JAN 28 2018