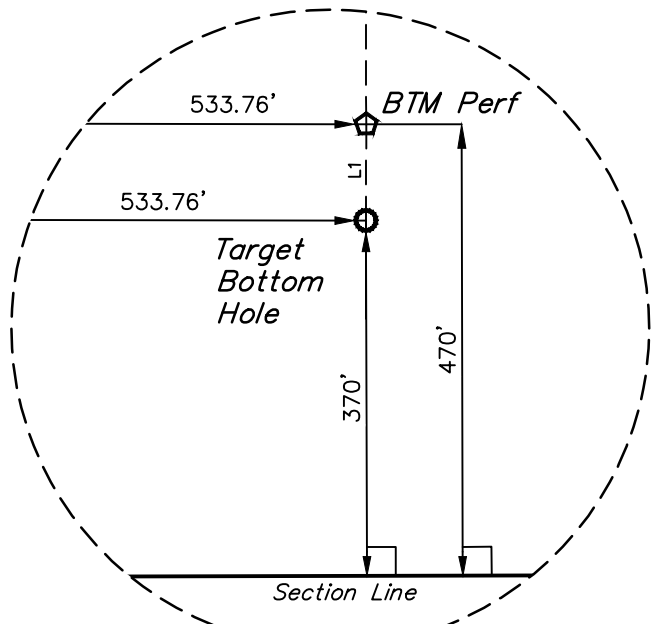
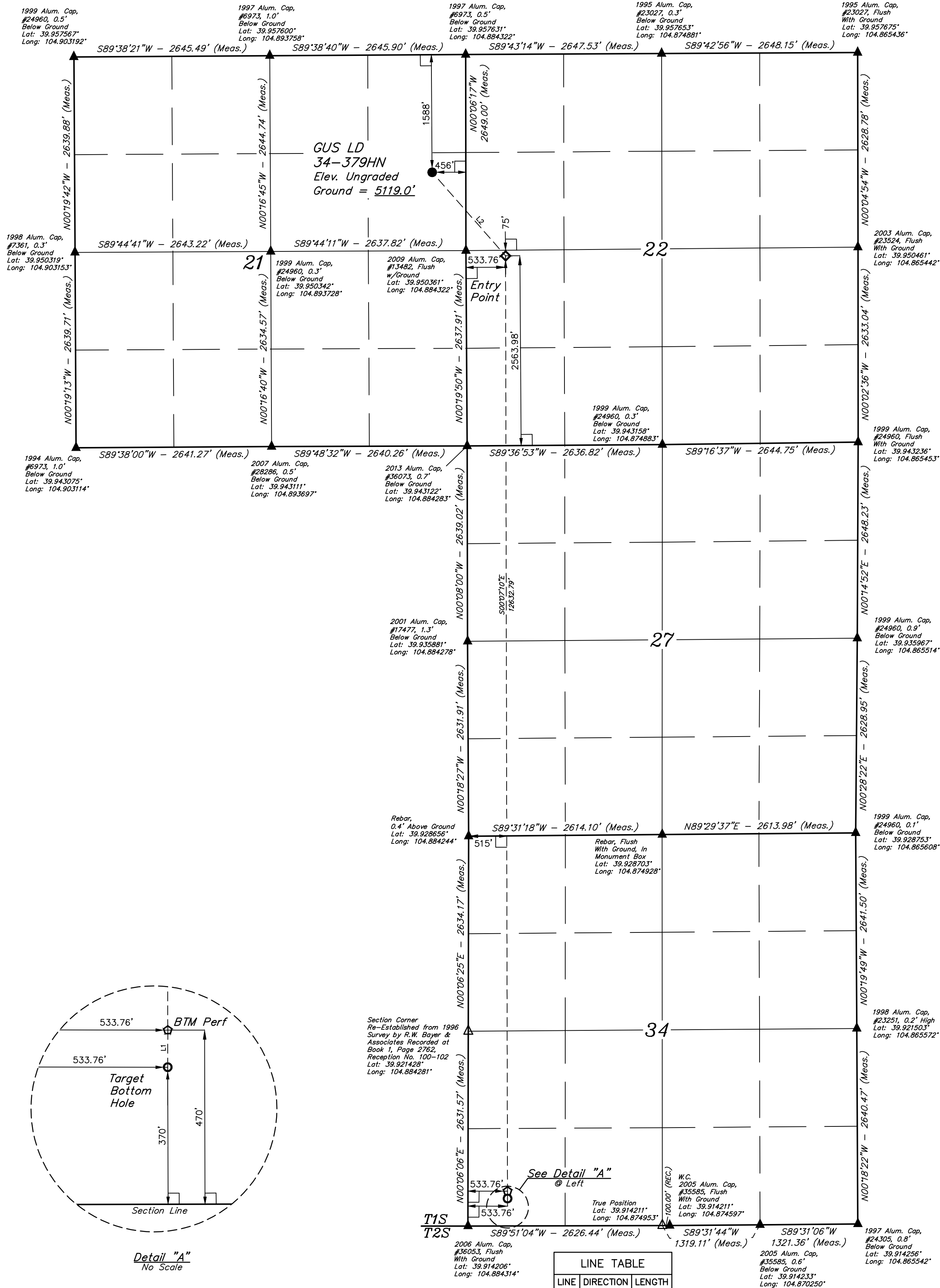


LEGEND:

- = 90° SYMBOL  
● = PROPOSED WELLHEAD.  
◇ = ENTRY POINT.  
○ = BTM PERF.  
○ = TARGET BOTTOM HOLE.  
▲ = SECTION CORNERS LOCATED. (NAD 83)  
△ = SECTION CORNERS RE-ESTABLISHED. (Not Set on Ground.) (NAD 83)

T1S, R67W, 6th P.M.



Detail "A"  
No Scale

PDOP = 1.3



NAD 83 (SURFACE LOCATION)	NAD 83 (ENTRY POINT)	NAD 83 (BTM PERF)	NAD 83 (TARGET BOTTOM HOLE)
LATITUDE = 39°57'11.76" (39.953268) LONGITUDE = 104°53'09.41" (104.885946)	LATITUDE = 39°57'00.60" (39.950166) LONGITUDE = 104°52'56.70" (104.882417)	LATITUDE = 39°54'55.79" (39.915496) LONGITUDE = 104°52'56.66" (104.882405)	LATITUDE = 39°54'54.80" (39.915221) LONGITUDE = 104°52'56.66" (104.882406)
NAD 27 (SURFACE LOCATION)	NAD 27 (ENTRY POINT)	NAD 27 (BTM PERF)	NAD 27 (TARGET BOTTOM HOLE)
LATITUDE = 39°57'11.82" (39.953284) LONGITUDE = 104°53'07.49" (104.885415)	LATITUDE = 39°57'00.65" (39.950182) LONGITUDE = 104°52'54.79" (104.881886)	LATITUDE = 39°54'55.84" (39.915511) LONGITUDE = 104°52'54.74" (104.881873)	LATITUDE = 39°54'54.85" (39.915236) LONGITUDE = 104°52'54.75" (104.881875)

BASIS OF BEARINGS

BASIS OF BEARINGS IS A G.P.S. OBSERVATION

BASIS OF ELEVATION

BENCHMARK JR 53 5026 LOCATED IN THE SW 1/4 SE 1/4 OF SECTION 18, T1N, R68W, 6th P.M., TAKEN FROM 1988 PUBLISHED DATUM BY THE UNITED STATES DEPARTMENT OF THE INTERIOR, GEOLOGICAL SURVEY AS BEING 5028 FEET.

UELS, LLC

Corporate Office \* 85 South 200 East  
Vernal, UT 84078 \* (435) 789-1017



REV: 1 07-27-18 B.L.B. (RELOCATE WELL HEADS, EP & TBH, ADDED BTM PERF)

GREAT WESTERN OPERATING COMPANY

GUS LD 34-379HN  
SE 1/4 NE 1/4, SECTION 21, T1S, R67W, 6th P.M.  
ADAMS COUNTY, COLORADO

SURVEYED BY	GREG WEIMER, D.D.	06-12-18	SCALE
DRAWN BY	K.B.	01-23-17	1" = 1000'

WELL LOCATION PLAT

CERTIFICATE OF RECORD  
THIS IS TO CERTIFY THAT THE ABOVE PLAT IS A TRUE AND CORRECT COPY OF THE ORIGINAL PLAT AS FILED IN THE PUBLIC RECORDS OF THE STATE OF COLORADO, AND THAT THE SAME ARE TRUE AND CORRECT TO THE BEST OF MY KNOWLEDGE AND BELIEF.

RECORDED LAND SURVEYOR  
RECORDATION NO. 28285  
STATE OF COLORADO  
JAN 28 2018