

First Quarter 2018 Groundwater Monitoring Summary Report

County Road 20 and Highway 85 Release Fort Lupton, Colorado

Prepared for:



370 17th St., Suite 2500
Denver, CO 80202

Prepared by:



6899 Pecos Street, Unit C
Denver, Colorado 80221

April 9, 2018

Table of Contents

1. Introduction	1
2. Site Location and Background.....	1
3. Groundwater Monitoring.....	1
3.1 Groundwater Elevation Monitoring.....	1
3.2 Groundwater Quality Monitoring	2
4. Remediation Activities	3
4.1 Groundwater Remediation Activities	3
5. Conclusions	3
6. Recommendations	3

Tables

- | | |
|---|--|
| 1 | First Quarter 2018 Summary of Groundwater Elevation Data |
| 2 | First Quarter 2018 Summary of BTEX Concentrations in Groundwater |

Figures

- | | |
|---|---|
| 1 | Site Location Map |
| 2 | Site Map with Monitoring Well Locations |
| 3 | Groundwater Elevation Contour Map – February 13, 2018 |
| 4 | Analytical Results Map – February 13, 2018 |

Appendices

- | | |
|---|---|
| A | Historical Analytical Groundwater Data – BTEX Concentrations in Groundwater |
| B | Laboratory Analytical Report – Summit Scientific 1802126 |

1. Introduction

This report summarizes the groundwater monitoring and remediation activities conducted during the first quarter 2018 at the County Road (CR) 20 and Highway (Hwy) 85 pipeline release (Site) in Fort Lupton, Colorado (Figure 1). Tasman Geosciences (Tasman) performed these activities on behalf of DCP Midstream, LP (DCP). The field activities were conducted with the purpose of monitoring groundwater flow and quality conditions. Current Site conditions were evaluated from field data and analytical laboratory results collected during the reporting period on February 13, 2018.

2. Site Location and Background

The Site is located in the southwestern quarter of the southwestern quarter of Section 17, Township 2 North, Range 66 West (approximate coordinates 40.130908 degrees north and 104.806673 degrees west). It is approximately 0.2 miles east on CR 20 from the intersection with Hwy 85, Ft. Lupton, Colorado.

On May 28, 2014, a petroleum hydrocarbon release was discovered following pipeline repair activities. An initial Form 19 was submitted to the Colorado Oil and Gas Conservation Commission (COGCC) on June 5, 2014. Quarterly groundwater monitoring activities were initiated during May 2015 at the Site.

3. Groundwater Monitoring

This section describes the field and laboratory activities performed during the first quarter 2018 groundwater monitoring event. Quarterly monitoring activities were conducted on February 13, 2018 and included Site-wide groundwater gauging and sampling. Figure 2 illustrates the groundwater monitoring network locations utilized to monitor the Site.

3.1 Groundwater Elevation Monitoring

Groundwater levels were measured to evaluate hydraulic characteristics and provide information regarding seasonal fluctuations in groundwater elevations at the Site. During the first quarter 2018, groundwater levels were measured at six (6) monitoring well locations (BH01 to BH03 and BH05 to BH07).

Groundwater levels were measured on the north side of the well casing to the nearest 0.01-foot using an oil-water interface probe (IP). Groundwater level data was later converted to elevation (feet above mean sea level [AMSL]). Measured groundwater levels and the calculated groundwater elevations are presented in Table 1.

A first quarter 2018 groundwater elevation map, included as Figure 3, indicates that a minimal groundwater gradient is present in proximity to the Site monitoring network. The relatively small scale between the differences in groundwater elevation and spatial distances between monitoring locations at the Site do not allow for accurate gradient contouring. Observed variations in groundwater elevations are likely attributed to several factors including seasonal fluctuations, increased use of the irrigation ditch to the west of the Site, flooding or increased irrigation of the farm to the north of the Site, and/or shallow groundwater use for irrigation to the east of the Site. Groundwater elevations will continue to be monitored during subsequent events. The range of groundwater elevations, average elevation change

from the previous monitoring event, and the calculated average hydraulic gradient (using elevations from BH01 and BH06) at the Site are summarized in the table below.

Summary of Measured Hydraulic Parameters

	First Quarter 2018 (2/13/18)
Maximum Elevation (Well ID)	4,859.43 (BH01)
Minimum Elevation (Well ID)	4,859.31 (BH06)
Average Change from Previous Monitoring Event – All Wells	-3.53 feet
Average Hydraulic Gradient (ft/ft) / (Well IDs)	0.0013 (BH01 to BH06)

3.2 Groundwater Quality Monitoring

Subsequent to recording groundwater level measurements at each monitoring well, groundwater samples were collected from the six (6) Site monitoring wells using disposable polyethylene bailers.

A minimum of three well casing volumes of groundwater were purged from each monitoring well prior to collecting groundwater samples. Groundwater samples were placed in clean laboratory supplied containers for the selected analytical methods, packed in an ice-filled cooler and maintained at approximately four (4) degrees Celsius (°C) for transportation to the laboratory. Groundwater samples were then delivered under chain-of-custody procedures to Summit Scientific Laboratories (Summit) in Golden, Colorado for analysis.

Water quality samples were submitted for analysis of benzene, toluene, ethylbenzene, and xylene (BTEX) by United States Environmental Protection Agency (USEPA) Method 8260B.

Table 2 summarizes BTEX concentrations in groundwater samples collected during the first quarter 2018 monitoring event. Historical analytical results up to and including the first quarter 2018 event are included in Appendix A and the laboratory analytical report for the first quarter 2018 is included in Appendix B. Analytical results are also displayed on Figure 4.

Analytical results/observations are summarized below:

- The benzene concentration at monitoring well BH07 (8.1 micrograms per liter [µg/L]) was in exceedance of the COGCC Table 910-1 standard of 5 µg/L. The benzene concentration decreased compared to the previous fourth quarter 2017 monitoring event but remains within historical ranges previously observed at this location.
- The total xylenes concentration at monitoring well BH02 (2,100 µg/L) was in exceedance of the COGCC Table 910-1 standard of 1,400 µg/L, and represents a historical high for this locations since monitoring was initiated in May 2015. Total xylenes were previously reported above the COGCC standards at this location in May 2015.

- BTEX concentrations at the four (4) other monitoring wells (BH01, BH03, BH05, and BH06) were reported below the COGCC Table 910-1 standards and/or laboratory detection limits during the first quarter 2018 monitoring event.

4. Remediation Activities

This Section includes a description of the active remediation activities at the Site along with observations during remediation efforts.

4.1 Groundwater Remediation Activities

As reported in previous quarterly monitoring reports, mobile, vacuum enhanced fluid recovery (EFR) groundwater remediation events were initiated at the Site starting the third quarter 2015 and discontinued during the fourth quarter 2016 due to the absence of light non-aqueous phase liquid (LNAPL) as well as decreased dissolved phase BTEX concentrations. Supplemental groundwater remediation activities were last performed at the Site during December 2016.

5. Conclusions

Comparison of the first quarter 2018 monitoring data and historical information provides the following general observations:

- Groundwater elevations and flow direction at the Site continue to fluctuate when compared to previous quarterly sampling events as indicated by the groundwater elevations depicted on Figure 3 and summarized on Table 1. During the first quarter 2018 monitoring event, groundwater flow was generally consistent with historical monitoring data. Groundwater elevation and flow directions will continue to be monitored during subsequent quarterly events.
- At BH02 and BH07, concentrations of benzene and/ or xylenes have periodically fluctuated from below to above COGCC Table 910-1 standards since monitoring was initiated at this location in May 2015. Variability in concentrations is likely a result of residual impacts in soils coming into contact with fluctuating groundwater levels as a result of seasonal runoff and local irrigation practices.
- BTEX concentrations at the four (4) other monitoring well locations were below COGCC standards and/or laboratory detection limits during the first quarter 2018 monitoring event.

6. Recommendations

Based on evaluation of data from the first quarter 2018 and historical Site observations and monitoring results, recommendations for future activities include:

- Continue quarterly groundwater monitoring and sampling at the monitoring well locations illustrated on Figure 2.

Tables

TABLE 1
FIRST QUARTER 2018
SUMMARY OF GROUNDWATER ELEVATION DATA
DCP CR 20 AND HWY 85 RELEASE
WELD COUNTY, COLORADO

Location	Date	Depth to Groundwater (feet)	Depth to Product (feet)	Free Phase Hydrocarbon Thickness (feet)	Total Depth (feet)	TOC Elevation (feet amsl)	Groundwater Elevation (feet amsl)	Change in Groundwater Elevation Since Previous Event (1) (feet)
BH01	5/8/2017	15.45			18.13	4,875.68	4,860.23	1.06
BH01	8/1/2017	11.00			18.11	4,875.68	4,864.68	4.45
BH01	11/1/2017	12.70			18.13	4,875.68	4,862.98	-1.70
BH01	2/13/2018	16.25			18.10	4,875.68	4,859.43	-3.55
BH02	5/8/2017	14.72			18.73	4,874.94	4,860.22	1.10
BH02	8/1/2017	10.29			18.73	4,874.94	4,864.65	4.43
BH02	11/1/2017	12.11			18.80	4,874.94	4,862.83	-1.82
BH02	2/13/2018	15.62			18.71	4,874.94	4,859.32	-3.51
BH03	5/8/2017	14.27			18.80	4,874.51	4,860.24	1.07
BH03	8/1/2017	9.80			18.82	4,874.51	4,864.71	4.47
BH03	11/1/2017	11.59			18.84	4,874.51	4,862.92	-1.79
BH03	2/13/2018	15.11			18.77	4,874.51	4,859.40	-3.52
BH05	5/8/2017	14.47			18.97	4,874.67	4,860.20	1.05
BH05	8/1/2017	9.97			19.00	4,874.67	4,864.70	4.50
BH05	11/1/2017	12.09			18.80	4,874.67	4,862.58	-2.12
BH05	2/13/2018	15.29			18.88	4,874.67	4,859.38	-3.20
BH06	5/8/2017	14.87			18.80	4,874.95	4,860.08	1.01
BH06	8/1/2017	10.30			18.81	4,874.95	4,864.65	4.57
BH06	11/1/2017	11.75			19.00	4,874.95	4,863.20	-1.45
BH06	2/13/2018	15.64			18.75	4,874.95	4,859.31	-3.89
BH07	5/8/2017	13.83			18.67	4,874.04	4,860.21	1.10
BH07	8/1/2017	9.37			18.73	4,874.04	4,864.67	4.46
BH07	11/1/2017	11.22			18.75	4,874.04	4,862.82	-1.85
BH07	2/13/2018	14.72			18.67	4,874.04	4,859.32	-3.50
Average change in groundwater elevation (11/1/2017 to 2/13/2018)								-3.53

Notes:

1- Changes in groundwater elevation calculated by subtracting the measurement collected during the previous monitoring event from the measurement

amsl = feet above mean sea level

TOC = top of casing

Groundwater elevation = (TOC Elevation - Measured Depth to Water)

NM = Not Measured

NA = Not Applicable

TABLE 2
FIRST QUARTER 2018
SUMMARY OF BTEX CONCENTRATIONS IN GROUNDWATER
DCP CR 20 AND HWY 85 RELEASE
WELD COUNTY, COLORADO

Location Identification	Sample Date	Benzene (µg/L)	Toluene (µg/L)	Ethylbenzene (µg/L)	Total Xylenes (µg/L)	Comments
COGCC Standards (µg/L)		5	560	700	1,400	
BH01	2/13/2018	<1.0	<1.0	<1.0	<2.0	
BH02	2/13/2018	<1.0	<1.0	230	2,100	
BH03	2/13/2018	<1.0	<1.0	<1.0	72	
BH05	2/13/2018	<1.0	<1.0	<1.0	<2.0	
BH06	2/13/2018	<1.0	<1.0	<1.0	<2.0	
BH07	2/13/2018	8.1	<1.0	230	560	

Notes:

1). The environmental cleanup standards for groundwater that are applicable to this site are the Colorado Oil and Gas Conservation Commission (COGCC) standards for contaminants in groundwater according to Table 910-1 of the COGCC 900 Series Rule for E&P Waste Management.

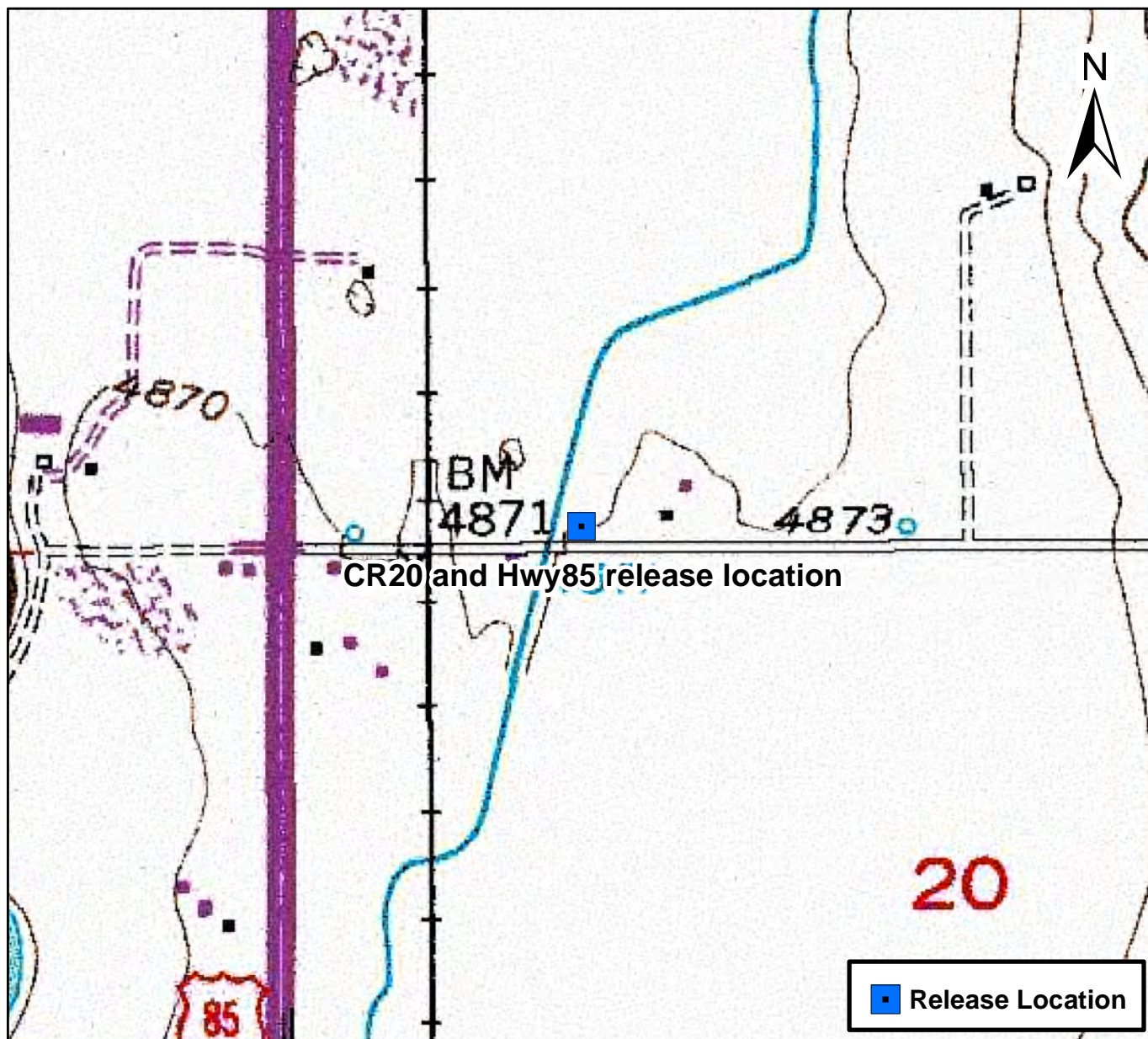
Bold red values indicate an exceedance of the COGCC groundwater standards for the Site.

NS = Not sampled.

µg/L = micrograms per liter.

LNAPL - Light non-aqueous phase liquid

Figures



0 750 1,500 Feet




Figure 1

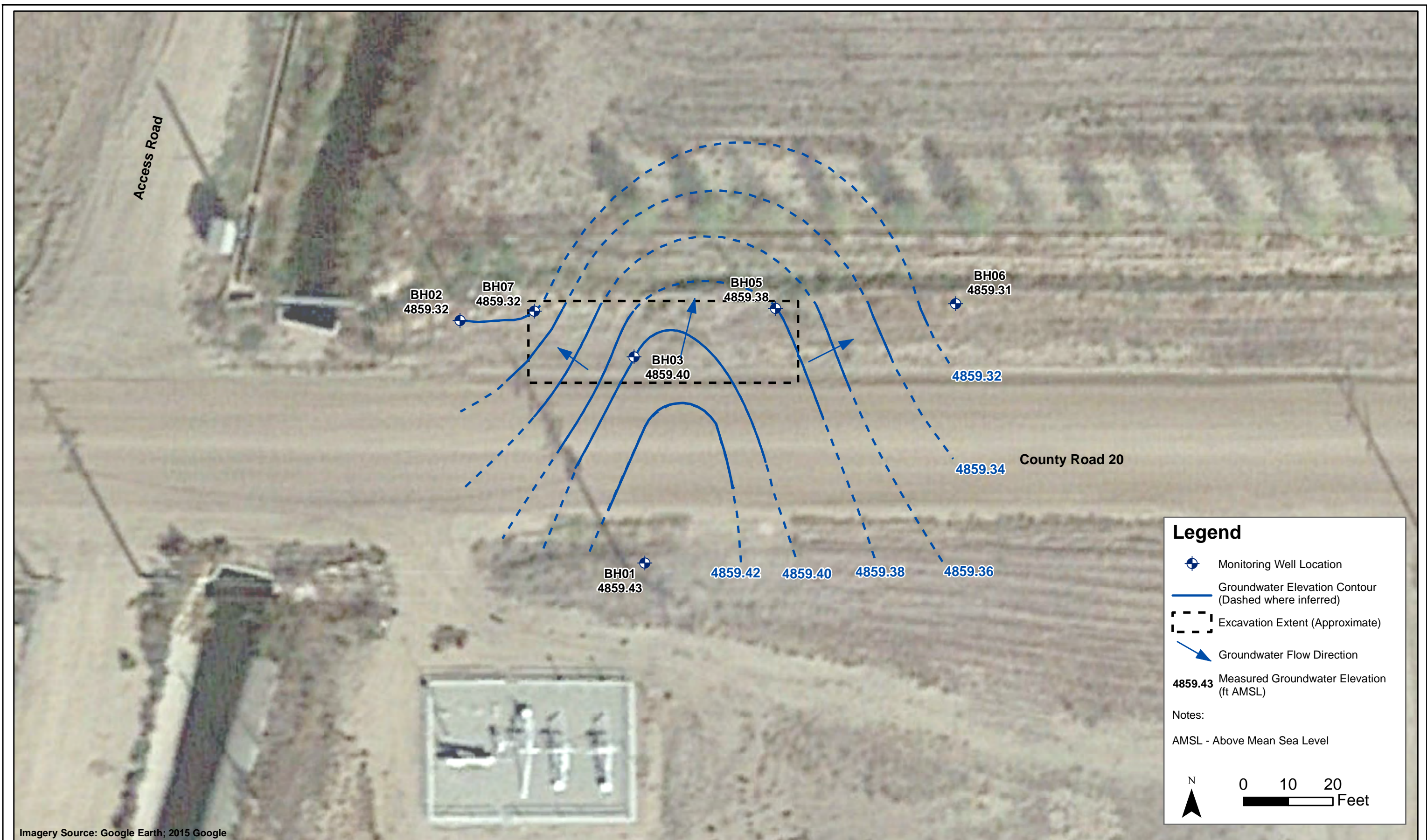
Site Location Map
CR20 and Hwy85 release location
SWSW S17 T2N R66W
Weld County, Colorado

Drawn By: DBA
Date: 06/04/2014


Tasman Geosciences



DATE: March 2018	 TASMAN GEOSCIENCES Tasman Geosciences, Inc 6899 Pecos Street - Unit C Denver, CO 80221	DCP Midstream County Road 20 and Highway 85 Release SWSW Section 17, Township 2 North, Range 66 West Weld County, Colorado	Site Overview Map	Figure 2
DESIGNED BY: B. Humphrey				
DRAWN BY: D. Arnold				



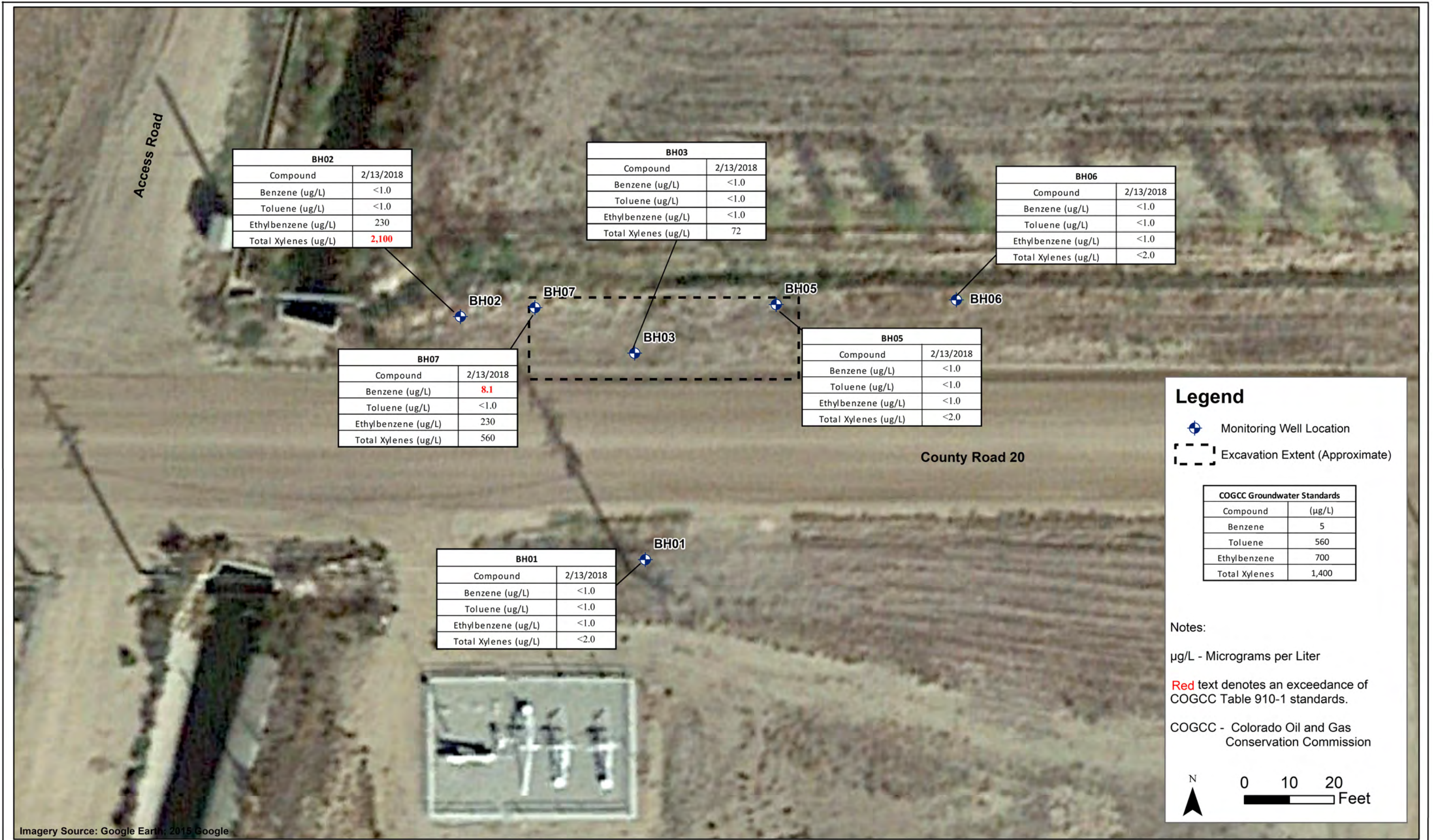
DATE:	March 2018
DESIGNED BY:	B. Humphrey
DRAWN BY:	D. Arnold



DCP Midstream
County Road 20 and Highway 85 Release
SWSW Section 17, Township 2 North, Range 66 West
Weld County, Colorado

Groundwater Elevation
Contour Map
(February 13, 2018)

Figure
3



DATE:	March 2018
DESIGNED BY:	B. Humphrey
DRAWN BY:	D. Arnold

Appendix A

Historical Analytical Groundwater Data

APPENDIX A
HISTORICAL ANALYTICAL GROUNDWATER DATA
DCP CR 20 AND HWY 85 RELEASE
WELD COUNTY, COLORADO

Location Identification	Sample Date	Benzene (µg/L)	Toluene (µg/L)	Ethylbenzene (µg/L)	Total Xylenes (µg/L)	Comments
COGCC Standards (µg/L)		5	560	700	1,400	
BH01	5/14/2015	<1.0	<1.0	<1.0	<1.0	
BH01	9/24/2015	<1.0	<1.0	<1.0	<1.0	
BH01	11/17/2015	<1.0	<1.0	<1.0	<1.0	
BH01	2/15/2016	<1.0	<1.0	<1.0	<1.0	
BH01	5/13/2016	<1.0	<1.0	<1.0	<1.0	
BH01	8/10/2016	<1.0	<1.0	<1.0	<1.0	
BH01	11/11/2016	<1.0	<1.0	<1.0	<1.0	
BH01	2/28/2017	<1.0	<1.0	<1.0	<1.0	
BH01	5/8/2017	<1.0	<1.0	<1.0	<2.0	
BH01	8/1/2017	<1.0	<1.0	<1.0	<2.0	
BH01	11/1/2017	<1.0	<1.0	<1.0	<2.0	
BH01	2/13/2018	<1.0	<1.0	<1.0	<2.0	
BH02	5/14/2015	120	5	210	2,000	
BH02	9/24/2015	20	<1.0	48	370	
BH02	11/17/2015	14	<1.0	72	490	
BH02	2/15/2016	2.4	1.4	260	730	
BH02	5/13/2016	2.2	<1.0	160	1,100	
BH02	8/10/2016	<1.0	<1.0	13	340	
BH02	11/11/2016	1.5	<1.0	17	910	
BH02	2/28/2017	<1.0	<1.0	<1.0	560	
BH02	5/8/2017	<1.0	<1.0	<1.0	240	
BH02	8/1/2017	<1.0	<1.0	150	700	
BH02	11/1/2017	<1.0	<1.0	<1.0	770	
BH02	2/13/2018	<1.0	<1.0	230	2,100	
BH03	5/14/2015	220	130	400	3,500	
BH03	9/24/2015	1.8	<1.0	7.0	150	
BH03	11/17/2015	<1.0	<1.0	43	400	
BH03	2/15/2016	<1.0	<1.0	42	280	
BH03*	5/17/2016	5.3	<1.0	79	590	
BH03	8/10/2016	3.1	<1.0	230	1,400	
BH03	11/11/2016	<1.0	<1.0	<1.0	1,200	
BH03	2/28/2017	<1.0	<1.0	<1.0	410	
BH03	5/8/2017	<1.0	<1.0	<1.0	130	
BH03	8/1/2017	4.6	<1.0	97	1,300	
BH03	11/1/2017	<1.0	<1.0	<1.0	110	
BH03	2/13/2018	<1.0	<1.0	<1.0	72	

APPENDIX A
HISTORICAL ANALYTICAL GROUNDWATER DATA
DCP CR 20 AND HWY 85 RELEASE
WELD COUNTY, COLORADO

Location Identification	Sample Date	Benzene (µg/L)	Toluene (µg/L)	Ethylbenzene (µg/L)	Total Xylenes (µg/L)	Comments
COGCC Standards (µg/L)		5	560	700	1,400	
BH05	5/14/2015	<1.0	<1.0	3	22	
BH05	9/24/2015	<1.0	<1.0	<1.0	<1.0	
BH05	11/17/2015	<1.0	<1.0	<1.0	<1.0	
BH05	2/15/2016	<1.0	<1.0	<1.0	<1.0	
BH05	5/13/2016	NS	NS	NS	NS	Well was dry
BH05	8/10/2016	<1.0	<1.0	<1.0	<1.0	
BH05	11/11/2016	<1.0	<1.0	<1.0	<1.0	
BH05	2/28/2017	<1.0	<1.0	<1.0	<1.0	
BH05	5/8/2017	<1.0	<1.0	<1.0	<2.0	
BH05	8/1/2017	<1.0	<1.0	<1.0	<2.0	
BH05	11/1/2017	<1.0	<1.0	<1.0	<2.0	
BH05	2/13/2018	<1.0	<1.0	<1.0	<2.0	
BH06	5/14/2015	<1.0	<1.0	<1.0	5	
BH06	9/24/2015	<1.0	<1.0	<1.0	<1.0	
BH06	11/17/2015	<1.0	<1.0	<1.0	<1.0	
BH06	2/15/2016	<1.0	<1.0	<1.0	<1.0	
BH06	5/13/2016	<1.0	<1.0	<1.0	<1.0	
BH06	8/10/2016	<1.0	<1.0	<1.0	<1.0	
BH06	11/11/2016	<1.0	<1.0	<1.0	<1.0	
BH06	2/28/2017	<1.0	<1.0	<1.0	<1.0	
BH06	5/8/2017	<1.0	<1.0	<1.0	<2.0	
BH06	8/1/2017	<1.0	<1.0	<1.0	<2.0	
BH06	11/1/2017	<1.0	<1.0	<1.0	<2.0	
BH06	2/13/2018	<1.0	<1.0	<1.0	<2.0	
BH07	5/14/2015	44	310	200	2,600	
BH07	9/24/2015	NS	NS	NS	NS	Trace amount of LNAPL
BH07	11/17/2015	85	1.1	210	3,100	
BH07	2/15/2016	NS	NS	NS	NS	LNAPL - 0.03 ft
BH07	5/13/2016	52	<1.0	500	3,300	
BH07	8/10/2016	1.8	<1.0	<1.0	560	Trace amount of LNAPL
BH07	11/11/2016	DRY				
BH07	2/28/2017	4.1	<1.0	90	1,400	
BH07	5/8/2017	<1.0	<1.0	<1.0	730	
BH07	8/1/2017	1.2	<1.0	17	210	
BH07	11/1/2017	31	<1.0	7.2	890	
BH07	2/13/2018	8.1	<1.0	230	560	

Notes:

1). The environmental cleanup standards for groundwater that are applicable to this site are the Colorado Oil and Gas Conservation Commission (COGCC) standards for contaminants in groundwater according to Table 910-1 of the COGCC 900 Series Rule for E&P Waste Management.

* Monitoring well BH03 was sampled on May 17, 2016 subsequent to purging apparent LNAPL from the well.

Bold red values indicate an exceedance of the COGCC groundwater standards for the Site.

NS = Not sampled.

µg/L = micrograms per liter.

LNAPL - Light non-aqueous phase liquid

Appendix B

Laboratory Analytical Report

- Summit Scientific 1802126

Summit Scientific

741 Corporate Circle – Suite I ♦ Golden, Colorado 80401

303.277.9310 - laboratory ♦ 303.277.9531 - fax

February 18, 2018

Brian Humphrey
DCP Operating Company
370 17th Street #2500
Denver, CO 80202
RE: CR20 + Hwy 85 Release

Enclosed are the results of analyses for samples received by Summit Scientific on 02/13/18 16:40. If you have any questions concerning this report, please feel free to contact me.

Sincerely,

A handwritten signature in black ink, appearing to read 'Paul Shrewsbury', with a stylized, cursive script.

Paul Shrewsbury For Ben Shrewsbury
Laboratory Manager



DCP Operating Company
370 17th Street #2500
Denver CO, 80202

Project: CR20 + Hwy 85 Release

Project Number: [none]
Project Manager: Brian Humphrey

Reported:
02/18/18 14:25

ANALYTICAL REPORT FOR SAMPLES

Sample ID	Laboratory ID	Matrix	Date Sampled	Date Received
BH01	1802126-01	Water	02/13/18 11:35	02/13/18 16:40
BH02	1802126-02	Water	02/13/18 11:30	02/13/18 16:40
BH03	1802126-03	Water	02/13/18 11:45	02/13/18 16:40
BH05	1802126-04	Water	02/13/18 11:50	02/13/18 16:40
BH06	1802126-05	Water	02/13/18 11:55	02/13/18 16:40
BH07	1802126-06	Water	02/13/18 11:40	02/13/18 16:40

Summit Scientific

The results in this report apply to the samples analyzed in accordance with the chain of custody document. This analytical report must be reproduced in its entirety.

1802126

741 Corporate Circle Suite I ♦ Golden, Colorado 80401
303-277-9310 ♦ 303-374-5933 Fax

Page 1 of 1

Project Manager: Steve Weathers
E-Mail: swweathers@dcpmidstream.com
Project Name: CR 20 & HW85
Project Number:

[illegible]

Sample Receipt Checklist

S2 Work Order: 1802126

Client: DCP Tasman

Client Project ID: CR20 to Highway 85

Shipped Via: P.V.
(UPS, FedEx, Hand Delivered, Pick-up, etc.)

Airbill #: _____

Matrix (check all that apply): Air Soil/Solid X Water Other: _____
(Describe)

Cooler ID					
Temp (°C)	<u>37</u>				

Thermometer ID: 61857155-K

	Yes	No	N/A	Comments (if any)
If samples require cooling, was the temperature at 4°C +/- 2°C ⁽¹⁾ ?				
NOTE: If samples are delivered the same day of sampling, this requirement is met provided that there is evidence that cooling has begun.	<u>✓</u>			
Were all samples received intact ⁽¹⁾ ?	<u>✓</u>			
Was adequate sample volume provided ⁽¹⁾ ?	<u>✓</u>			
If custody seals are present, are they intact ⁽¹⁾ ?			<u>✓</u>	
Are short holding time analytes or samples with HTs due within 48 hours present?			<u>✓</u>	
Is a chain-of-custody (COC) form present and filled out completely ⁽¹⁾ ?	<u>✓</u>			
Does the COC agree with the number and type of sample bottles received ⁽¹⁾ ?	<u>✓</u>			
Do the sample IDs on the bottle labels match the COC ⁽¹⁾ ?	<u>✓</u>			
Is the COC properly relinquished by the client w/ date and time recorded ⁽¹⁾ ?	<u>✓</u>			
For volatiles in water – is there headspace present? If yes, contact client and note in narrative.		<u>✓</u>	<u>✗</u>	
Are samples preserved that require preservation (excluding cooling) ⁽¹⁾ ?				
Note the type of preservative in the Comments column – HCl, H2SO4, NaOH, HNO3, ect			<u>✓</u>	
If samples are acid preserved for metals, is the pH ≤ 2 ⁽¹⁾ ?			<u>✓</u>	
Record the pH in Comments.			<u>✓</u>	
If dissolved metals are requested, were samples field filtered?			<u>✓</u>	
Additional Comments (if any):				

⁽¹⁾ If NO, then contact the client before proceeding with analysis and note in case narrative.

Muri P.
Custodian Printed Name

HA 2-13-18
Signature or Initials of Custodian

17:00
Date/Time



DCP Operating Company
370 17th Street #2500
Denver CO, 80202

Project: CR20 + Hwy 85 Release
Project Number: [none]
Project Manager: Brian Humphrey

Reported:
02/18/18 14:25

BH01
1802126-01 (Water)

Summit Scientific

Volatile Organic Compounds by EPA Method 8260B

Date Sampled: **02/13/18 11:35**

Analyte	Result	Reporting Limit	Units	Dilution	Batch	Prepared	Analyzed	Method	Notes
Benzene	ND	1.0	ug/l	1	1802190	02/17/18	02/17/18	EPA 8260B	
Toluene	ND	1.0	"	"	"	"	"	"	
Ethylbenzene	ND	1.0	"	"	"	"	"	"	
Xylenes (total)	ND	2.0	"	"	"	"	"	"	

Date Sampled: **02/13/18 11:35**

Analyte	Result	Reporting Limit	Units	Dilution	Batch	Prepared	Analyzed	Method	Notes
Surrogate: 1,2-Dichloroethane-d4		108 %	37-154		"	"	"	"	
Surrogate: Toluene-d8		96.2 %	45-149		"	"	"	"	
Surrogate: 4-Bromofluorobenzene		100 %	45-146		"	"	"	"	

Summit Scientific

The results in this report apply to the samples analyzed in accordance with the chain of custody document. This analytical report must be reproduced in its entirety.



DCP Operating Company
370 17th Street #2500
Denver CO, 80202

Project: CR20 + Hwy 85 Release
Project Number: [none]
Project Manager: Brian Humphrey

Reported:
02/18/18 14:25

BH02
1802126-02 (Water)

Summit Scientific

Volatile Organic Compounds by EPA Method 8260B

Date Sampled: **02/13/18 11:30**

Analyte	Result	Reporting Limit	Units	Dilution	Batch	Prepared	Analyzed	Method	Notes
Benzene	ND	1.0	ug/l	1	1802190	02/17/18	02/17/18	EPA 8260B	
Toluene	ND	1.0	"	"	"	"	"	"	
Ethylbenzene	230	1.0	"	"	"	"	"	"	
Xylenes (total)	2100	20	"	10	"	"	"	"	

Date Sampled: **02/13/18 11:30**

Analyte	Result	Reporting Limit	Units	Dilution	Batch	Prepared	Analyzed	Method	Notes
Surrogate: 1,2-Dichloroethane-d4		104 %	37-154		"	"	"	"	
Surrogate: Toluene-d8		102 %	45-149		"	"	"	"	
Surrogate: 4-Bromofluorobenzene		100 %	45-146		"	"	"	"	

Summit Scientific

The results in this report apply to the samples analyzed in accordance with the chain of custody document. This analytical report must be reproduced in its entirety.



DCP Operating Company
370 17th Street #2500
Denver CO, 80202

Project: CR20 + Hwy 85 Release
Project Number: [none]
Project Manager: Brian Humphrey

Reported:
02/18/18 14:25

BH03
1802126-03 (Water)

Summit Scientific

Volatile Organic Compounds by EPA Method 8260B

Date Sampled: **02/13/18 11:45**

Analyte	Result	Reporting Limit	Units	Dilution	Batch	Prepared	Analyzed	Method	Notes
Benzene	ND	1.0	ug/l	1	1802190	02/17/18	02/17/18	EPA 8260B	
Toluene	ND	1.0	"	"	"	"	"	"	
Ethylbenzene	ND	1.0	"	"	"	"	"	"	
Xylenes (total)	72	2.0	"	"	"	"	"	"	

Date Sampled: **02/13/18 11:45**

Analyte	Result	Reporting Limit	Units	Dilution	Batch	Prepared	Analyzed	Method	Notes
Surrogate: 1,2-Dichloroethane-d4		107 %	37-154		"	"	"	"	
Surrogate: Toluene-d8		94.5 %	45-149		"	"	"	"	
Surrogate: 4-Bromofluorobenzene		101 %	45-146		"	"	"	"	

Summit Scientific

The results in this report apply to the samples analyzed in accordance with the chain of custody document. This analytical report must be reproduced in its entirety.



DCP Operating Company
370 17th Street #2500
Denver CO, 80202

Project: CR20 + Hwy 85 Release
Project Number: [none]
Project Manager: Brian Humphrey

Reported:
02/18/18 14:25

BH05
1802126-04 (Water)

Summit Scientific

Volatile Organic Compounds by EPA Method 8260B

Date Sampled: **02/13/18 11:50**

Analyte	Result	Reporting Limit	Units	Dilution	Batch	Prepared	Analyzed	Method	Notes
Benzene	ND	1.0	ug/l	1	1802190	02/17/18	02/17/18	EPA 8260B	
Toluene	ND	1.0	"	"	"	"	"	"	
Ethylbenzene	ND	1.0	"	"	"	"	"	"	
Xylenes (total)	ND	2.0	"	"	"	"	"	"	

Date Sampled: **02/13/18 11:50**

Analyte	Result	Reporting Limit	Units	Dilution	Batch	Prepared	Analyzed	Method	Notes
Surrogate: 1,2-Dichloroethane-d4		108 %	37-154		"	"	"	"	
Surrogate: Toluene-d8		94.0 %	45-149		"	"	"	"	
Surrogate: 4-Bromofluorobenzene		103 %	45-146		"	"	"	"	

Summit Scientific

The results in this report apply to the samples analyzed in accordance with the chain of custody document. This analytical report must be reproduced in its entirety.



DCP Operating Company
370 17th Street #2500
Denver CO, 80202

Project: CR20 + Hwy 85 Release
Project Number: [none]
Project Manager: Brian Humphrey

Reported:
02/18/18 14:25

BH06
1802126-05 (Water)

Summit Scientific

Volatile Organic Compounds by EPA Method 8260B

Date Sampled: **02/13/18 11:55**

Analyte	Result	Reporting Limit	Units	Dilution	Batch	Prepared	Analyzed	Method	Notes
Benzene	ND	1.0	ug/l	1	1802190	02/17/18	02/17/18	EPA 8260B	
Toluene	ND	1.0	"	"	"	"	"	"	
Ethylbenzene	ND	1.0	"	"	"	"	"	"	
Xylenes (total)	ND	2.0	"	"	"	"	"	"	

Date Sampled: **02/13/18 11:55**

Analyte	Result	Reporting Limit	Units	Dilution	Batch	Prepared	Analyzed	Method	Notes
Surrogate: 1,2-Dichloroethane-d4		105 %	37-154		"	"	"	"	
Surrogate: Toluene-d8		94.6 %	45-149		"	"	"	"	
Surrogate: 4-Bromofluorobenzene		101 %	45-146		"	"	"	"	

Summit Scientific

The results in this report apply to the samples analyzed in accordance with the chain of custody document. This analytical report must be reproduced in its entirety.



DCP Operating Company
370 17th Street #2500
Denver CO, 80202

Project: CR20 + Hwy 85 Release
Project Number: [none]
Project Manager: Brian Humphrey

Reported:
02/18/18 14:25

BH07
1802126-06 (Water)

Summit Scientific

Volatile Organic Compounds by EPA Method 8260B

Date Sampled: **02/13/18 11:40**

Analyte	Result	Reporting Limit	Units	Dilution	Batch	Prepared	Analyzed	Method	Notes
Benzene	8.1	1.0	ug/l	1	1802190	02/17/18	02/17/18	EPA 8260B	
Toluene	ND	1.0	"	"	"	"	"	"	
Ethylbenzene	230	1.0	"	"	"	"	"	"	
Xylenes (total)	560	20	"	10	"	"	"	"	

Date Sampled: **02/13/18 11:40**

Analyte	Result	Reporting Limit	Units	Dilution	Batch	Prepared	Analyzed	Method	Notes
Surrogate: 1,2-Dichloroethane-d4		108 %	37-154		"	"	"	"	
Surrogate: Toluene-d8		105 %	45-149		"	"	"	"	
Surrogate: 4-Bromofluorobenzene		103 %	45-146		"	"	"	"	

Summit Scientific

The results in this report apply to the samples analyzed in accordance with the chain of custody document. This analytical report must be reproduced in its entirety.



DCP Operating Company
370 17th Street #2500
Denver CO, 80202

Project: CR20 + Hwy 85 Release
Project Number: [none]
Project Manager: Brian Humphrey

Reported:
02/18/18 14:25

Volatile Organic Compounds by EPA Method 8260B - Quality Control

Summit Scientific

Analyte	Reporting			Spike	Source		%REC		RPD	
	Result	Limit	Units	Level	Result	%REC	Limits	RPD	Limit	Notes

Batch 1802190 - EPA 5030 Water MS

Blank (1802190-BLK1)

Prepared & Analyzed: 02/17/18

Benzene	ND	1.0	ug/l							
Toluene	ND	1.0	"							
Ethylbenzene	ND	1.0	"							
Xylenes (total)	ND	2.0	"							
Surrogate: 1,2-Dichloroethane-d4	13.2		"	13.3		99.4	37-154			
Surrogate: Toluene-d8	12.9		"	13.3		96.5	45-149			
Surrogate: 4-Bromofluorobenzene	13.6		"	13.3		102	45-146			

LCS (1802190-BS1)

Prepared & Analyzed: 02/17/18

Benzene	37.9	1.0	ug/l	33.3		114	51-132			
Toluene	38.5	1.0	"	33.3		116	51-138			
Ethylbenzene	43.2	1.0	"	33.1		130	58-146			
m,p-Xylene	84.4	2.0	"	66.5		127	57-144			
o-Xylene	40.5	1.0	"	32.7		124	53-146			
Surrogate: 1,2-Dichloroethane-d4	14.2		"	13.3		106	37-154			
Surrogate: Toluene-d8	13.0		"	13.3		97.7	45-149			
Surrogate: 4-Bromofluorobenzene	13.4		"	13.3		100	45-146			

Matrix Spike (1802190-MS1)

Source: 1802126-01

Prepared & Analyzed: 02/17/18

Benzene	38.7	1.0	ug/l	33.3	ND	116	34-141			
Toluene	39.1	1.0	"	33.3	ND	117	27-151			
Ethylbenzene	44.1	1.0	"	33.1	ND	133	29-160			
m,p-Xylene	85.9	2.0	"	66.5	ND	129	20-166			
o-Xylene	41.0	1.0	"	32.7	ND	125	33-159			
Surrogate: 1,2-Dichloroethane-d4	14.6		"	13.3		110	37-154			
Surrogate: Toluene-d8	13.0		"	13.3		97.7	45-149			
Surrogate: 4-Bromofluorobenzene	13.3		"	13.3		100	45-146			

Summit Scientific

The results in this report apply to the samples analyzed in accordance with the chain of custody document. This analytical report must be reproduced in its entirety.



DCP Operating Company
370 17th Street #2500
Denver CO, 80202

Project: CR20 + Hwy 85 Release
Project Number: [none]
Project Manager: Brian Humphrey

Reported:
02/18/18 14:25

Volatile Organic Compounds by EPA Method 8260B - Quality Control
Summit Scientific

Analyte	Reporting			Spike	Source		%REC		RPD	
	Result	Limit	Units	Level	Result	%REC	Limits	RPD	Limit	Notes

Batch 1802190 - EPA 5030 Water MS

Matrix Spike Dup (1802190-MSD1)	Source: 1802126-01			Prepared & Analyzed: 02/17/18						
Benzene	39.0	1.0	ug/l	33.3	ND	117	34-141	0.721	32	
Toluene	39.7	1.0	"	33.3	ND	119	27-151	1.40	25	
Ethylbenzene	44.0	1.0	"	33.1	ND	133	29-160	0.295	50	
m,p-Xylene	86.3	2.0	"	66.5	ND	130	20-166	0.406	36	
o-Xylene	41.6	1.0	"	32.7	ND	127	33-159	1.43	26	
Surrogate: 1,2-Dichloroethane-d4	14.5		"	13.3		109	37-154			
Surrogate: Toluene-d8	13.0		"	13.3		97.2	45-149			
Surrogate: 4-Bromofluorobenzene	13.2		"	13.3		98.9	45-146			

Summit Scientific

The results in this report apply to the samples analyzed in accordance with the chain of custody document. This analytical report must be reproduced in its entirety.



DCP Operating Company
370 17th Street #2500
Denver CO, 80202

Project: CR20 + Hwy 85 Release

Project Number: [none]
Project Manager: Brian Humphrey

Reported:
02/18/18 14:25

Notes and Definitions

DET	Analyte DETECTED
ND	Analyte NOT DETECTED at or above the reporting limit
NR	Not Reported
dry	Sample results reported on a dry weight basis
RPD	Relative Percent Difference