



6899 Pecos Street, Unit C
Denver, Colorado 80221

CLIENT: Kerr-McGee Oil & Gas Onshore LP

LOGGED BY: Brandon LeVasseur

PROJECT MANAGER: Robert Cornez

DRILLING CONTRACTOR: Tasman Geosciences, Inc.

DRILLING EQUIPMENT: AMS PowerProbe

DRILL BIT SIZE (INCHES): 2-3/8"

DATE STARTED - COMPLETED: 4/2/2015

TOTAL WELL DEPTH (FT. BGS): 19

DEPTH TO WATER (FT. BGS): 11.02 (4/14/2015) ▼

Albert Sack Unit 1 Production Facility

BORING/WELL ID: BH01 (Abandoned)

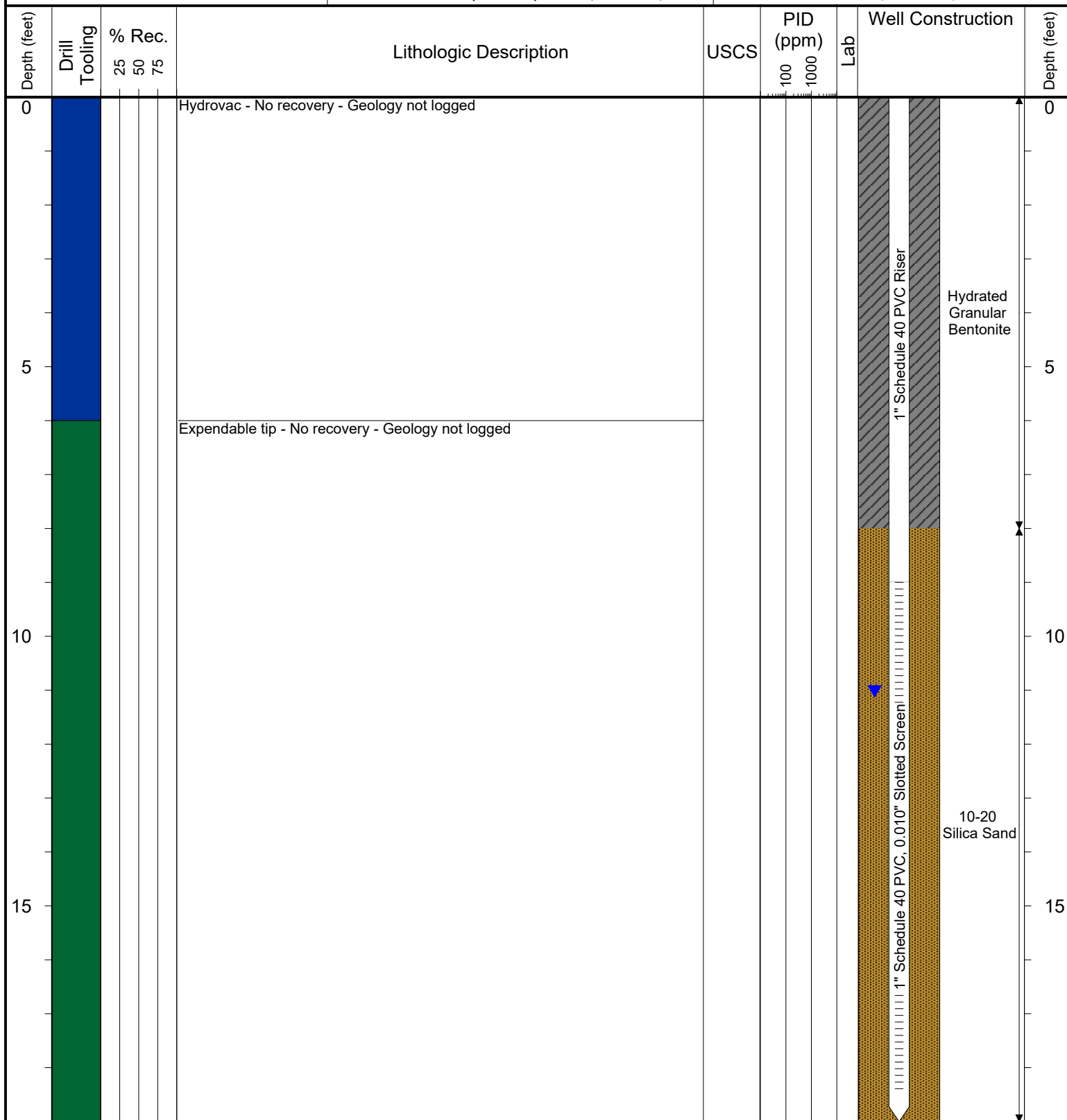
SURFACE COMPLETION: Stick up: 3.95'

LATITUDE (WGS 1984): 40.0400978106

LONGITUDE (WGS 1984): -104.87213991

CASING ELEVATION (FT. AMSL): 4975.58

GROUND ELEVATION (FT. AMSL): 4971.63



Drilling / Sample Method:

Macro-Core
 Hydrovac
 Expendable Well Tip
 Hand Auger

Laboratory Sample Types:

Geotechnical Lab
 Analytical Chemistry Lab
 Geotechnical & Analytical Chemistry Lab



6899 Pecos Street, Unit C
Denver, Colorado 80221

CLIENT: Kerr-McGee Oil & Gas Onshore LP

LOGGED BY: Brandon LeVasseur

PROJECT MANAGER: Robert Cornez

DRILLING CONTRACTOR: Tasman Geosciences, Inc.

DRILLING EQUIPMENT: AMS PowerProbe

DRILL BIT SIZE (INCHES): 2-3/8"

DATE STARTED - COMPLETED: 3/18/2019

TOTAL WELL DEPTH (FT. BGS): 14

DEPTH TO WATER (FT. BGS): Not Measured

Albert Sack Unit 1 Production Facility

BORING/WELL ID: BH01R (Abandoned)

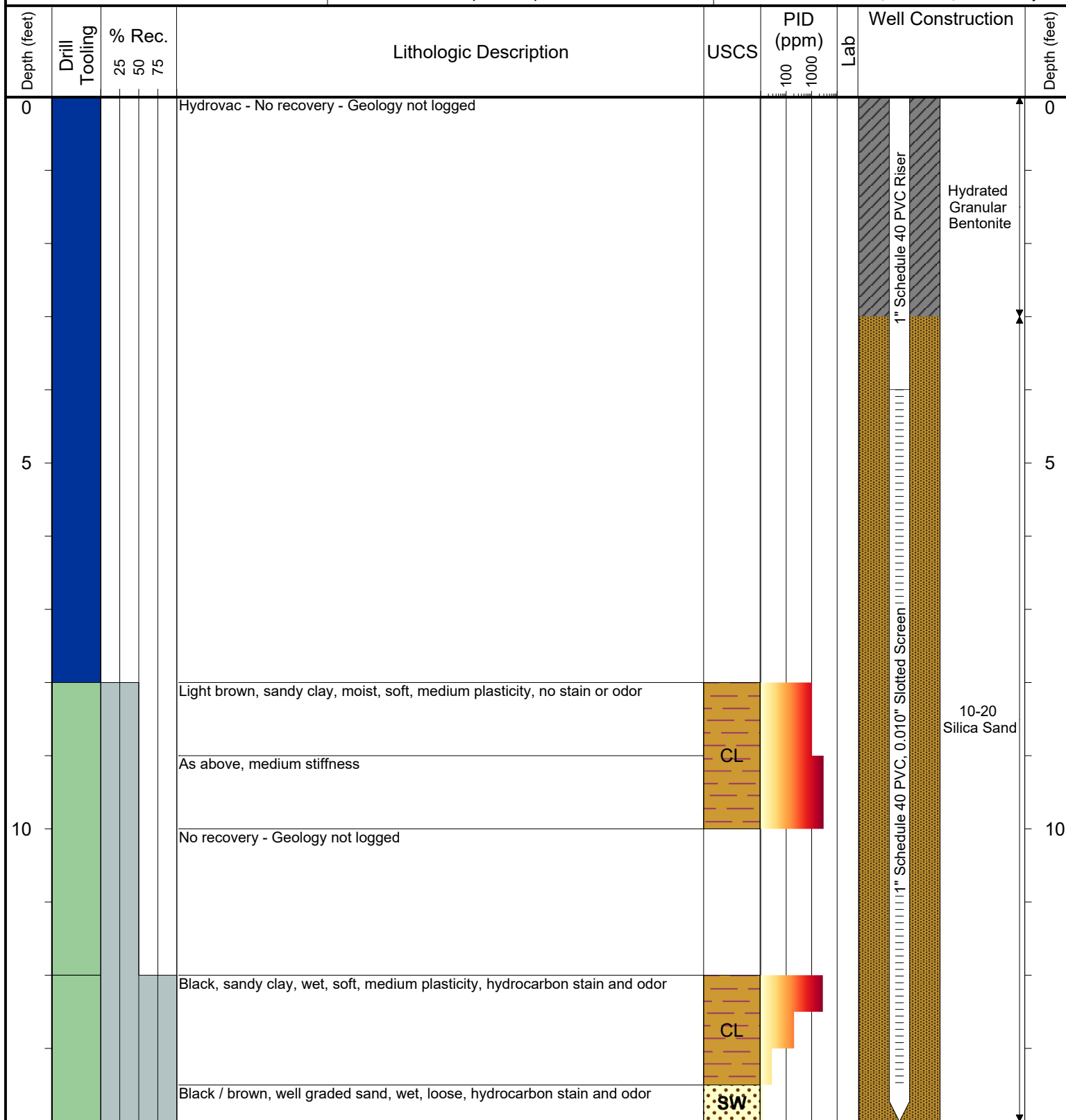
SURFACE COMPLETION: Flush Mount

LATITUDE (WGS 1984): Not Surveyed

LONGITUDE (WGS 1984): Not Surveyed

CASING ELEVATION (FT. AMSL): Not Surveyed

GROUND ELEVATION (FT. AMSL): Not Surveyed



Drilling / Sample Method:

Macro-Core
 Expendable Well Tip
 Hydrovac
 Hand Auger

Laboratory Sample Types:

Geotechnical Lab
 Analytical Chemistry Lab
 Geotechnical & Analytical Chemistry Lab



6899 Pecos Street, Unit C
Denver, Colorado 80221

CLIENT: Kerr-McGee Oil & Gas Onshore LP

LOGGED BY: Brandon LeVasseur

PROJECT MANAGER: Robert Cornez

DRILLING CONTRACTOR: Tasman Geosciences, Inc.

DRILLING EQUIPMENT: AMS PowerProbe

DRILL BIT SIZE (INCHES): 2-3/8"

DATE STARTED - COMPLETED: 4/2/2015

TOTAL WELL DEPTH (FT. BGS): 19

DEPTH TO WATER (FT. BGS): 10.79 (4/14/2015) ▼

Albert Sack Unit 1 Production Facility

BORING/WELL ID: BH02 (Abandoned)

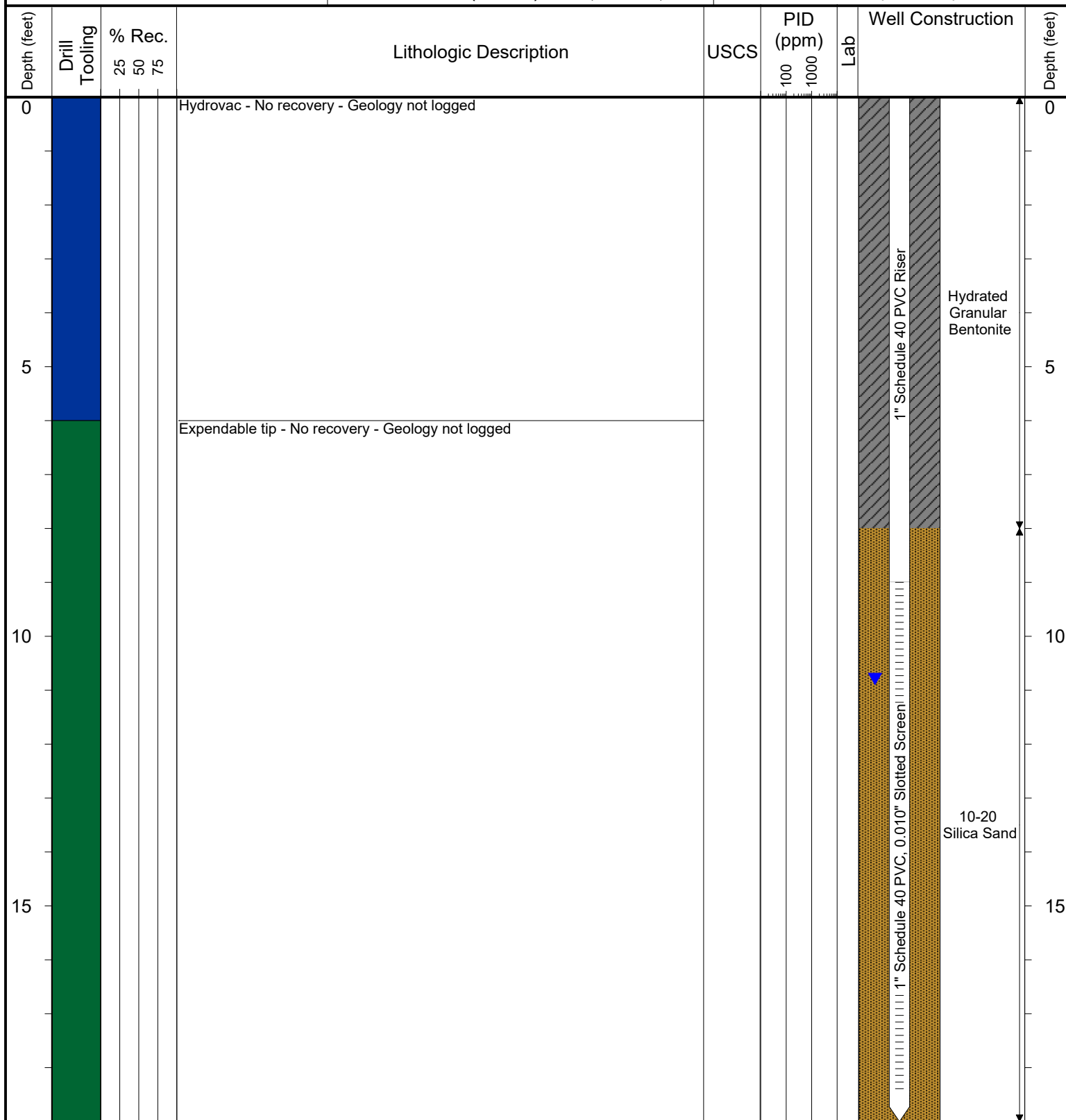
SURFACE COMPLETION: Stick up: 3.61'

LATITUDE (WGS 1984): 40.040089625

LONGITUDE (WGS 1984): -104.87232577

CASING ELEVATION (FT. AMSL): 4974.66

GROUND ELEVATION (FT. AMSL): 4971.05



Drilling / Sample Method:

- Macro-Core
- Hydrovac
- Expendable Well Tip
- Hand Auger

Laboratory Sample Types:

- Geotechnical Lab
- Analytical Chemistry Lab
- Geotechnical & Analytical Chemistry Lab



6899 Pecos Street, Unit C
Denver, Colorado 80221

CLIENT: Kerr-McGee Oil & Gas Onshore LP

LOGGED BY: Brandon LeVasseur

PROJECT MANAGER: Robert Cornez

DRILLING CONTRACTOR: Tasman Geosciences, Inc.

DRILLING EQUIPMENT: AMS PowerProbe

DRILL BIT SIZE (INCHES): 2-3/8"

DATE STARTED - COMPLETED: 3/12/2019

TOTAL WELL DEPTH (FT. BGS): 16

DEPTH TO WATER (FT. BGS): 10.87 (3/28/19) ▼

Albert Sack Unit 1 Production Facility

BORING/WELL ID: BH02R (Abandoned)

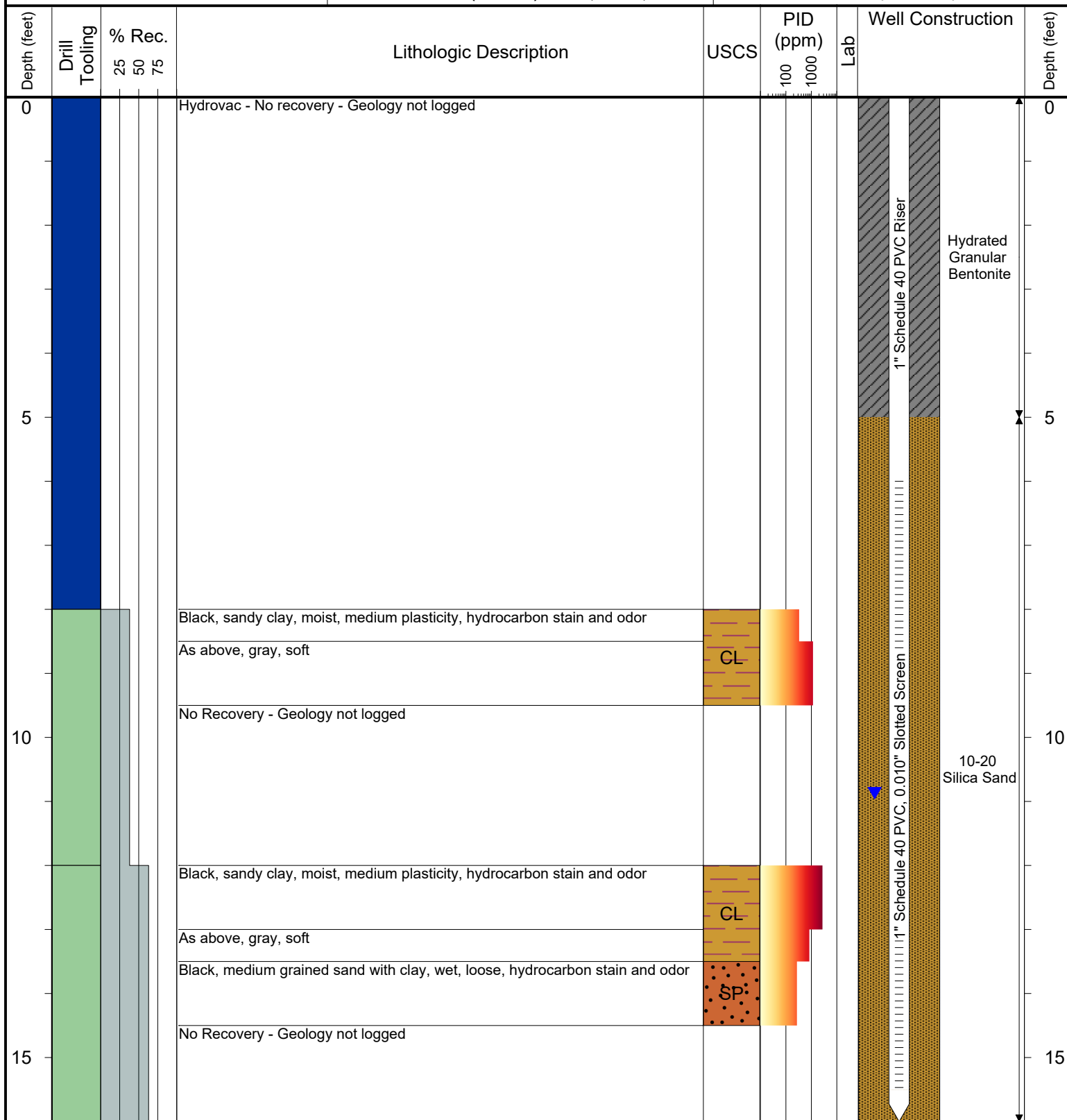
SURFACE COMPLETION: Flush Mount

LATITUDE (WGS 1984): 40.04008178343

LONGITUDE (WGS 1984): -104.87229165628

CASING ELEVATION (FT. AMSL): 4970.88

GROUND ELEVATION (FT. AMSL): 4971.18



Drilling / Sample Method:

Macro-Core

Hydrovac

Expendable Well Tip

Hand Auger

Laboratory Sample Types:

Geotechnical Lab

Analytical Chemistry Lab

Geotechnical & Analytical Chemistry Lab



6899 Pecos Street, Unit C
Denver, Colorado 80221

CLIENT: Kerr-McGee Oil & Gas Onshore LP

LOGGED BY: Brandon LeVasseur

PROJECT MANAGER: Robert Cornez

DRILLING CONTRACTOR: Tasman Geosciences, Inc.

DRILLING EQUIPMENT: AMS PowerProbe

DRILL BIT SIZE (INCHES): 2-3/8"

DATE STARTED - COMPLETED: 4/2/2015

TOTAL WELL DEPTH (FT. BGS): 19

DEPTH TO WATER (FT. BGS): 10.56 (4/14/2015) ▼

Albert Sack Unit 1 Production Facility

BORING/WELL ID: BH03 (Abandoned)

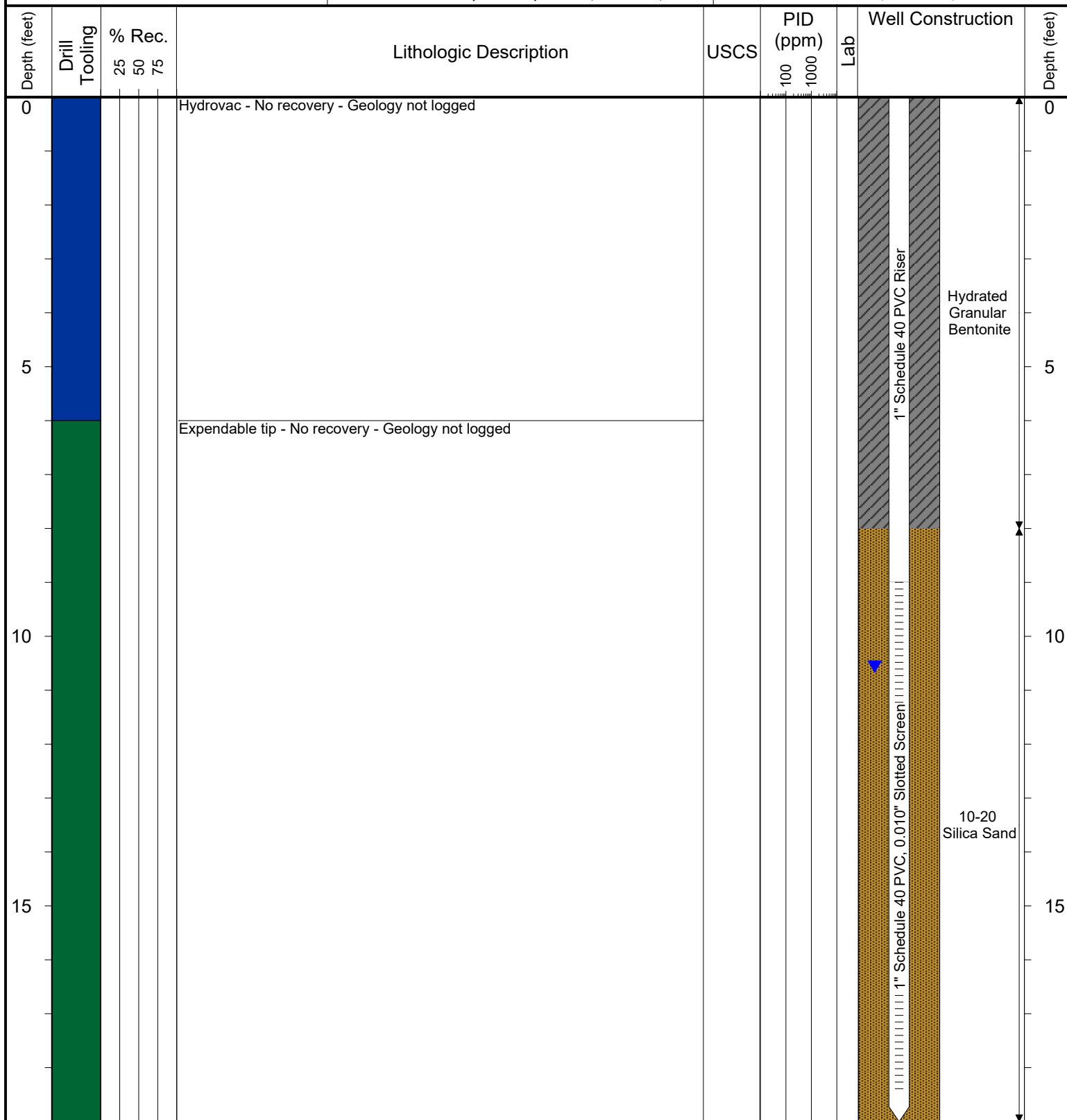
SURFACE COMPLETION: Flush Mount

LATITUDE (WGS 1984): 40.039982512

LONGITUDE (WGS 1984): -104.87231163

CASING ELEVATION (FT. AMSL): 4971.08

GROUND ELEVATION (FT. AMSL): 4971.28



Drilling / Sample Method:

- Macro-Core
- Hydrovac
- Expendable Well Tip
- Hand Auger

Laboratory Sample Types:

- Geotechnical Lab
- Analytical Chemistry Lab
- Geotechnical & Analytical Chemistry Lab



6899 Pecos Street, Unit C
Denver, Colorado 80221

CLIENT: Kerr-McGee Oil & Gas Onshore LP

LOGGED BY: Brandon LeVasseur

PROJECT MANAGER: Robert Cornez

DRILLING CONTRACTOR: Tasman Geosciences, Inc.

DRILLING EQUIPMENT: AMS PowerProbe

DRILL BIT SIZE (INCHES): 2-3/8"

DATE STARTED - COMPLETED: 4/2/2015

TOTAL WELL DEPTH (FT. BGS): 19

DEPTH TO WATER (FT. BGS): 10.83 (4/14/2015) ▼

Albert Sack Unit 1 Production Facility

BORING/WELL ID: BH04 (Abandoned)

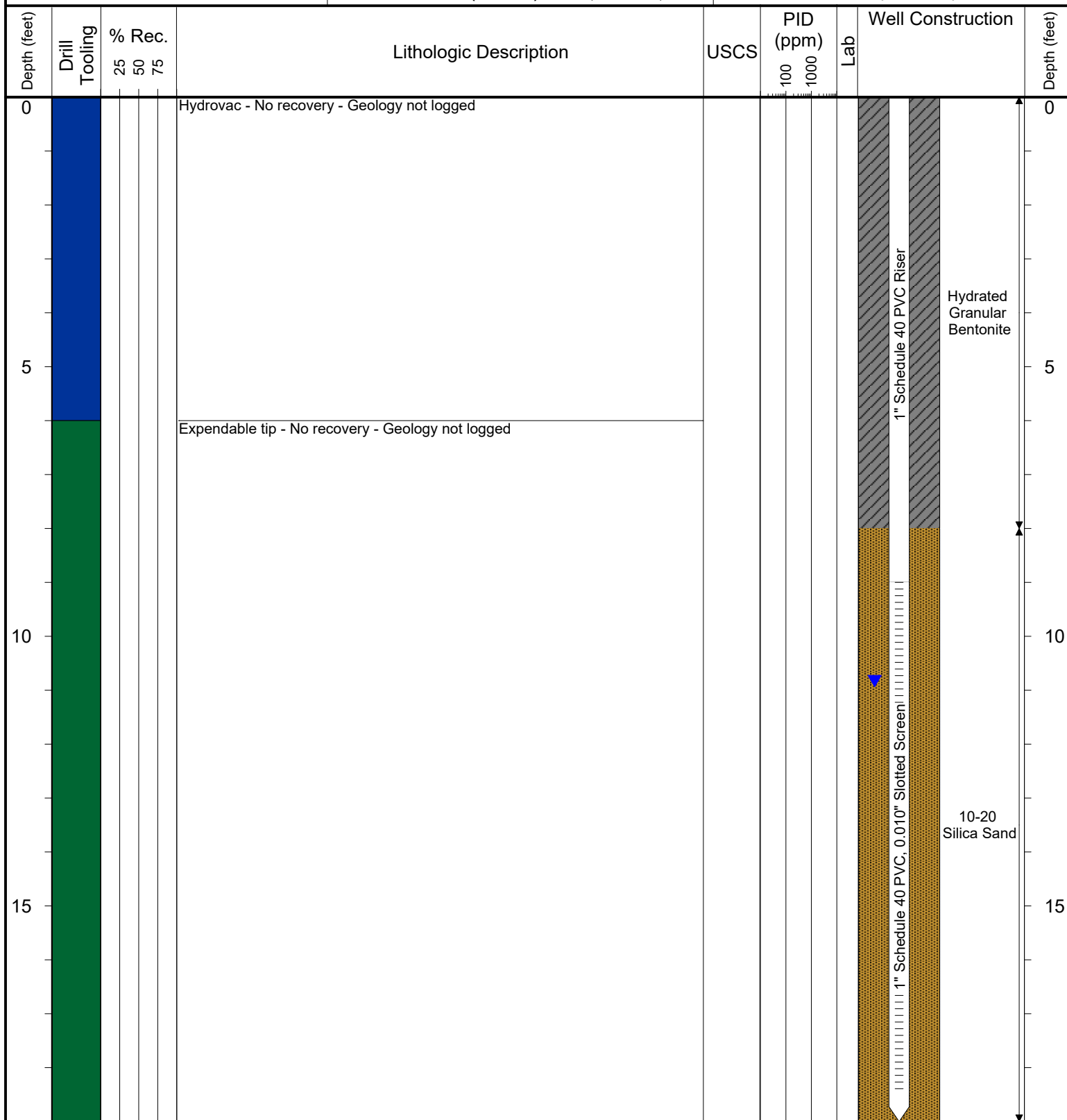
SURFACE COMPLETION: Flush Mount

LATITUDE (WGS 1984): 40.040103897

LONGITUDE (WGS 1984): -104.87246153

CASING ELEVATION (FT. AMSL): 4971.69

GROUND ELEVATION (FT. AMSL): 4971.98



Drilling / Sample Method:

- Macro-Core
- Hydrovac
- Expendable Well Tip
- Hand Auger

Laboratory Sample Types:

- Geotechnical Lab
- Analytical Chemistry Lab
- Geotechnical & Analytical Chemistry Lab



6899 Pecos Street, Unit C
Denver, Colorado 80221

CLIENT: Kerr-McGee Oil & Gas Onshore LP

LOGGED BY: Brandon LeVasseur

PROJECT MANAGER: Robert Cornez

DRILLING CONTRACTOR: Tasman Geosciences, Inc.

DRILLING EQUIPMENT: AMS PowerProbe

DRILL BIT SIZE (INCHES): 2-3/8"

DATE STARTED - COMPLETED: 4/2/2015

TOTAL WELL DEPTH (FT. BGS): 19

DEPTH TO WATER (FT. BGS): 10.90 (4/14/2015) ▼

Albert Sack Unit 1 Production Facility

BORING/WELL ID: BH05 (Destroyed)

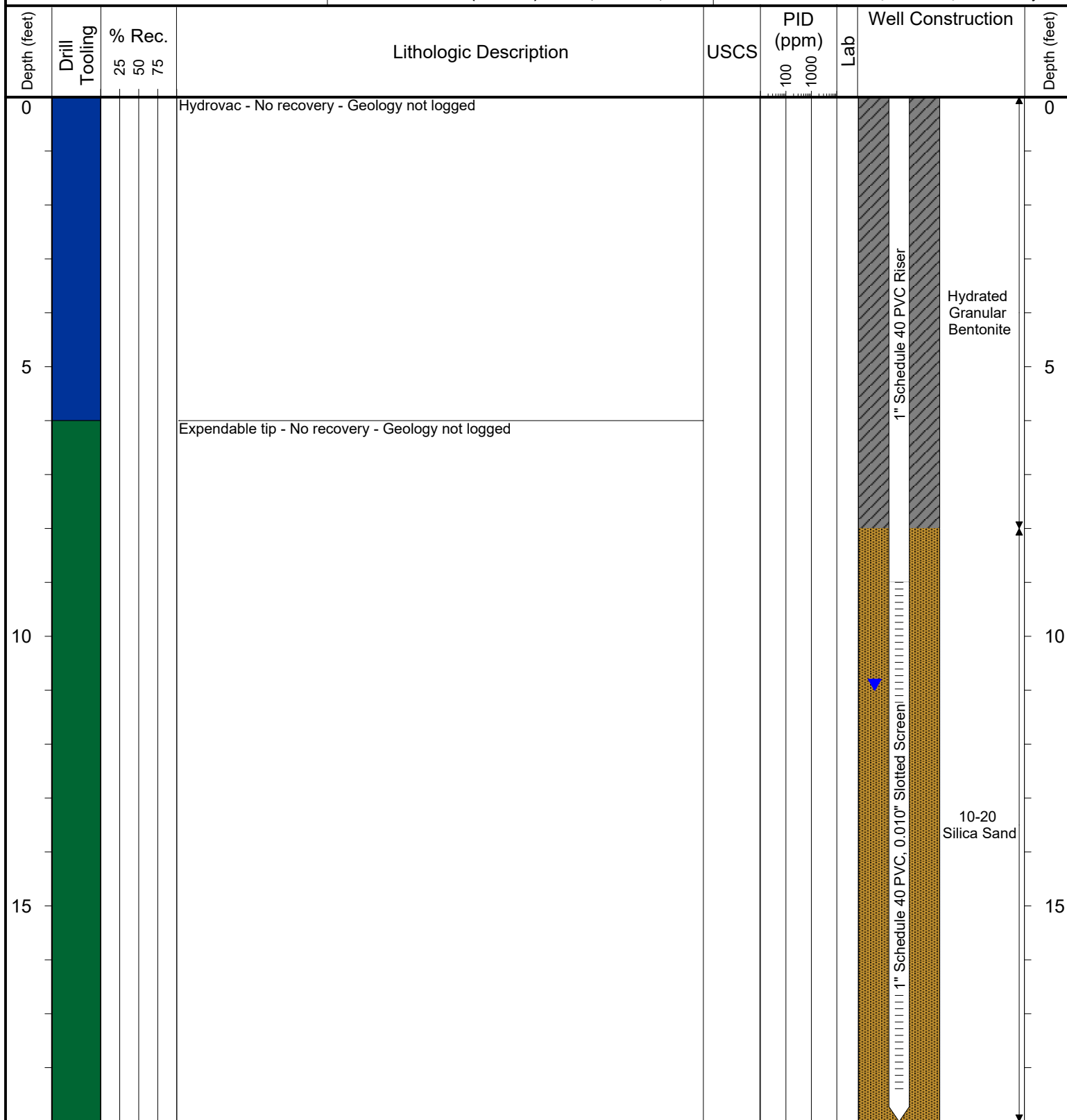
SURFACE COMPLETION: Flush Mount

LATITUDE (WGS 1984): 40.040191706

LONGITUDE (WGS 1984): -104.872287

CASING ELEVATION (FT. AMSL): 4971.59

GROUND ELEVATION (FT. AMSL): Not Surveyed



Drilling / Sample Method:

Macro-Core
 Hydrovac
 Expendable Well Tip
 Hand Auger

Laboratory Sample Types:

Geotechnical Lab
 Analytical Chemistry Lab
 Geotechnical & Analytical Chemistry Lab



6899 Pecos Street, Unit C
Denver, Colorado 80221

CLIENT: Kerr-McGee Oil & Gas Onshore LP

LOGGED BY: Brandon LeVasseur

PROJECT MANAGER: Robert Cornez

DRILLING CONTRACTOR: Tasman Geosciences, Inc.

DRILLING EQUIPMENT: AMS PowerProbe

DRILL BIT SIZE (INCHES): 2-3/8"

DATE STARTED - COMPLETED: 5/9/2016

TOTAL WELL DEPTH (FT. BGS): 15

DEPTH TO WATER (FT. BGS): 7.49 (7/12/2016) ▼

Albert Sack Unit 1 Production Facility

BORING/WELL ID: BH05R (Abandoned)

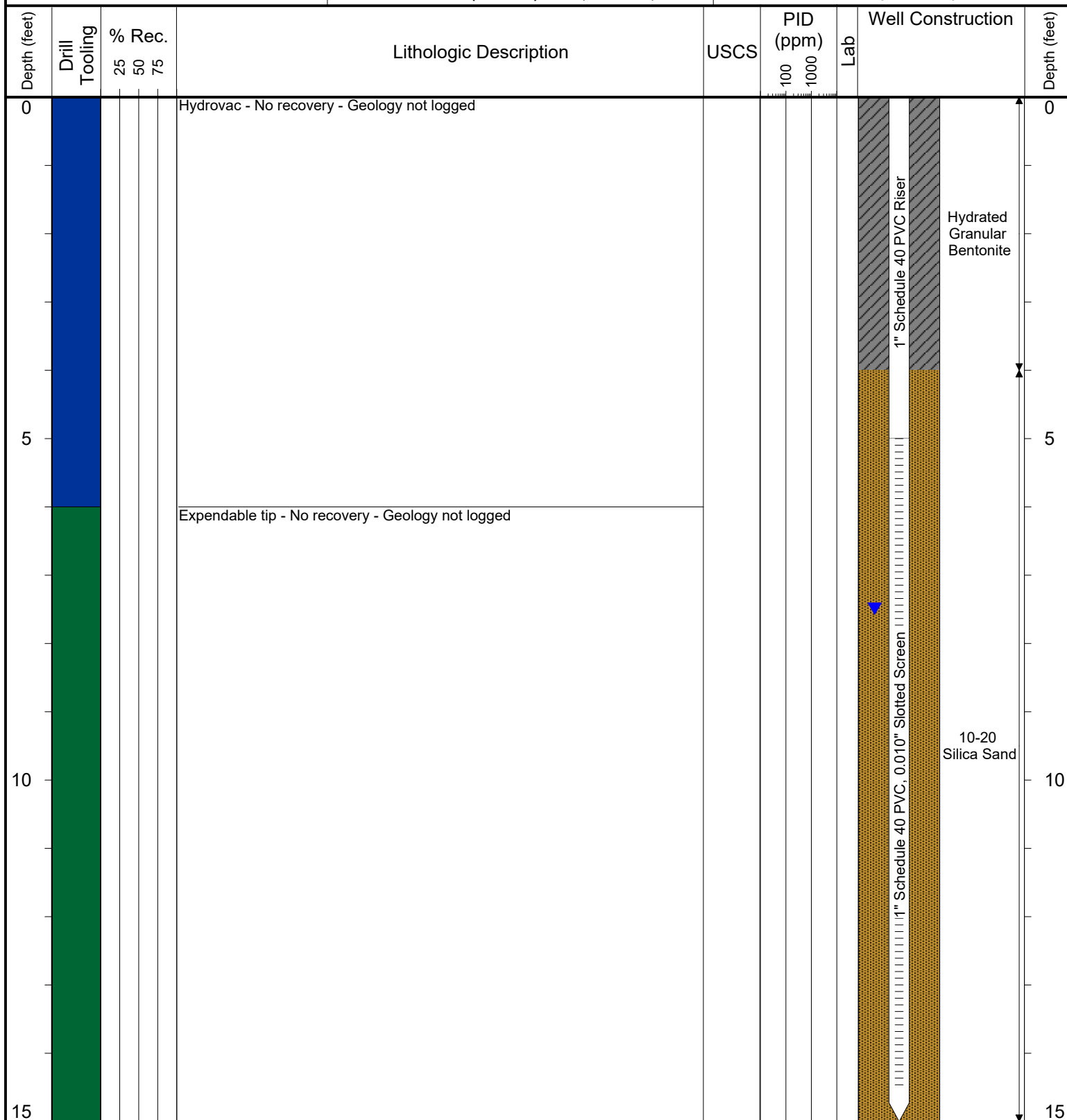
SURFACE COMPLETION: Flush Mount

LATITUDE (WGS 1984): 40.402018698

LONGITUDE (WGS 1984): -104.87228811

CASING ELEVATION (FT. AMSL): 4971.59

GROUND ELEVATION (FT. AMSL): 4971.83



Drilling / Sample Method:

Macro-Core

Hydrovac

Expendable Well Tip

Hand Auger

Laboratory Sample Types:

Geotechnical Lab

Analytical Chemistry Lab

Geotechnical & Analytical Chemistry Lab



6899 Pecos Street, Unit C
Denver, Colorado 80221

CLIENT: Kerr-McGee Oil & Gas Onshore LP

LOGGED BY: Brandon LeVasseur

PROJECT MANAGER: Robert Cornez

DRILLING CONTRACTOR: Tasman Geosciences, Inc.

DRILLING EQUIPMENT: AMS PowerProbe

DRILL BIT SIZE (INCHES): 2-3/8"

DATE STARTED - COMPLETED: 3/12/2019

TOTAL WELL DEPTH (FT. BGS): 15

DEPTH TO WATER (FT. BGS): 10.24 (3/28/19) ▼

Albert Sack Unit 1 Production Facility

BORING/WELL ID: BH05R2

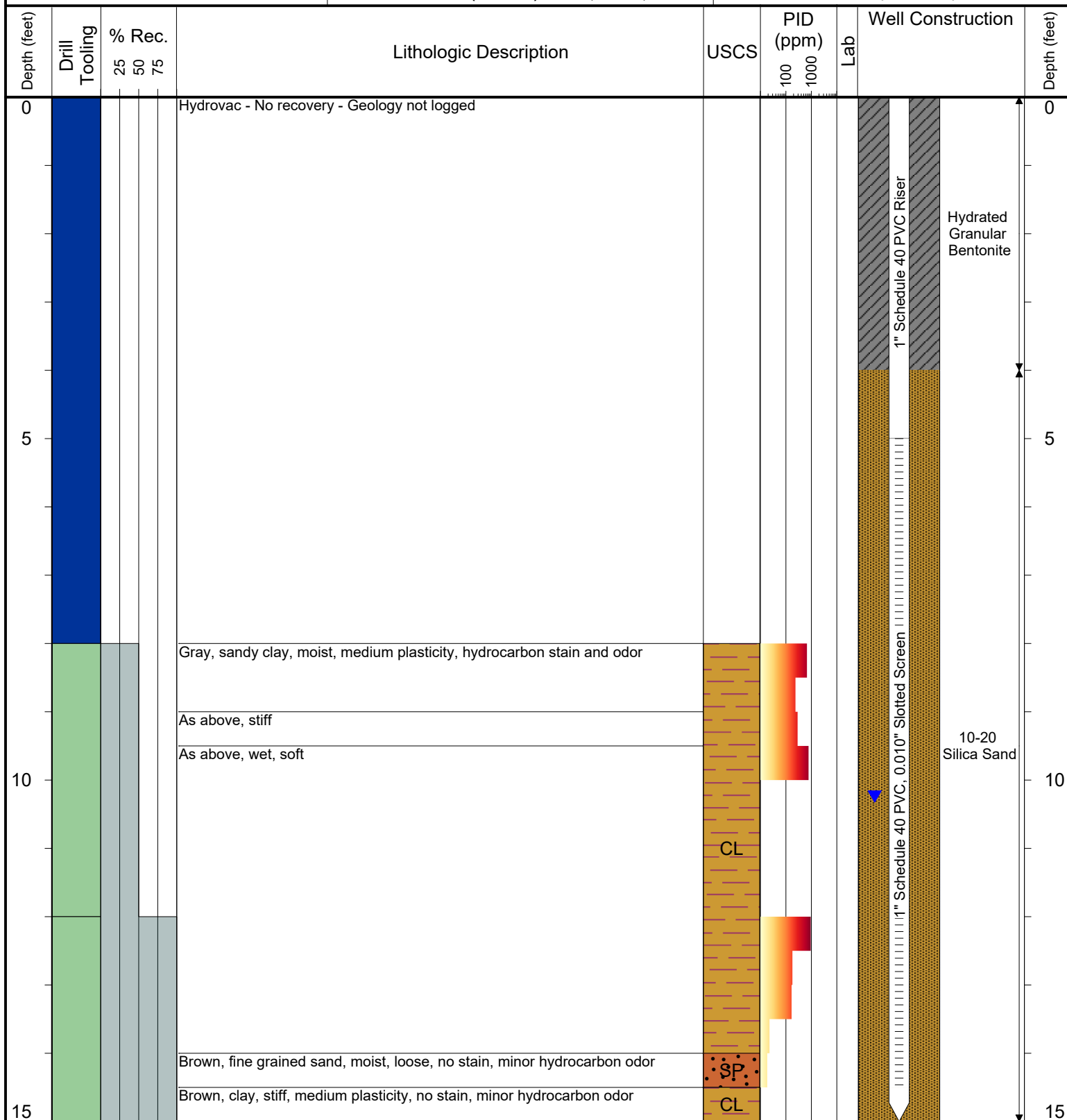
SURFACE COMPLETION: Flush Mount

LATITUDE (WGS 1984): 40.040198860406

LONGITUDE (WGS 1984): -104.87226597675

CASING ELEVATION (FT. AMSL): 4970.4

GROUND ELEVATION (FT. AMSL): 4970.63



Drilling / Sample Method:

Macro-Core
Expendable Well Tip

Hydrovac

Hand Auger

Laboratory Sample Types:

Geotechnical Lab

Analytical Chemistry Lab

Geotechnical & Analytical Chemistry Lab



6899 Pecos Street, Unit C
Denver, Colorado 80221

CLIENT: Kerr-McGee Oil & Gas Onshore LP

LOGGED BY: Brandon LeVasseur

PROJECT MANAGER: Robert Cornez

DRILLING CONTRACTOR: Tasman Geosciences, Inc.

DRILLING EQUIPMENT: AMS PowerProbe

DRILL BIT SIZE (INCHES): 2-3/8"

DATE STARTED - COMPLETED: 6/19/2015

TOTAL WELL DEPTH (FT. BGS): 17.5

DEPTH TO WATER (FT. BGS): 9.18 (7/6/2015) ▼

Albert Sack Unit 1 Production Facility

BORING/WELL ID: BH06 (Abandoned)

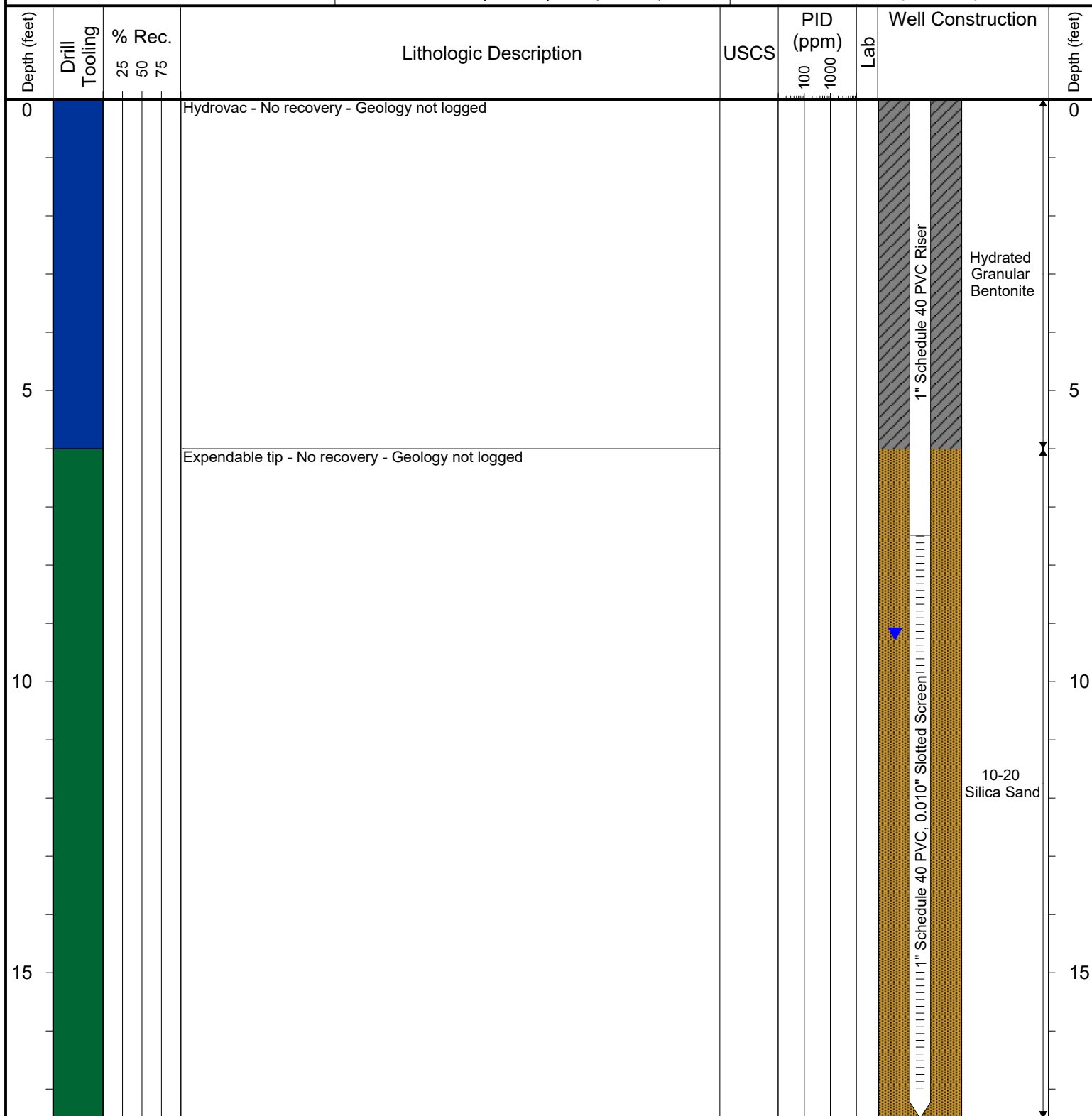
SURFACE COMPLETION: Flush Mount

LATITUDE (WGS 1984): 40.040206362

LONGITUDE (WGS 1984): -104.87222961

CASING ELEVATION (FT. AMSL): 4971.46

GROUND ELEVATION (FT. AMSL): 4971.7



Drilling / Sample Method:

- Macro-Core
- Hydrovac
- Expendable Well Tip
- Hand Auger

Laboratory Sample Types:

- Geotechnical Lab
- Analytical Chemistry Lab
- Geotechnical & Analytical Chemistry Lab



6899 Pecos Street, Unit C
Denver, Colorado 80221

CLIENT: Kerr-McGee Oil & Gas Onshore LP

LOGGED BY: Brandon LeVasseur

PROJECT MANAGER: Robert Cornez

DRILLING CONTRACTOR: Tasman Geosciences, Inc.

DRILLING EQUIPMENT: AMS PowerProbe

DRILL BIT SIZE (INCHES): 2-3/8"

DATE STARTED - COMPLETED: 6/19/2015

TOTAL WELL DEPTH (FT. BGS): 17.5

DEPTH TO WATER (FT. BGS): 9.14 (7/6/2015) ▼

Albert Sack Unit 1 Production Facility

BORING/WELL ID: BH07 (Abandoned)

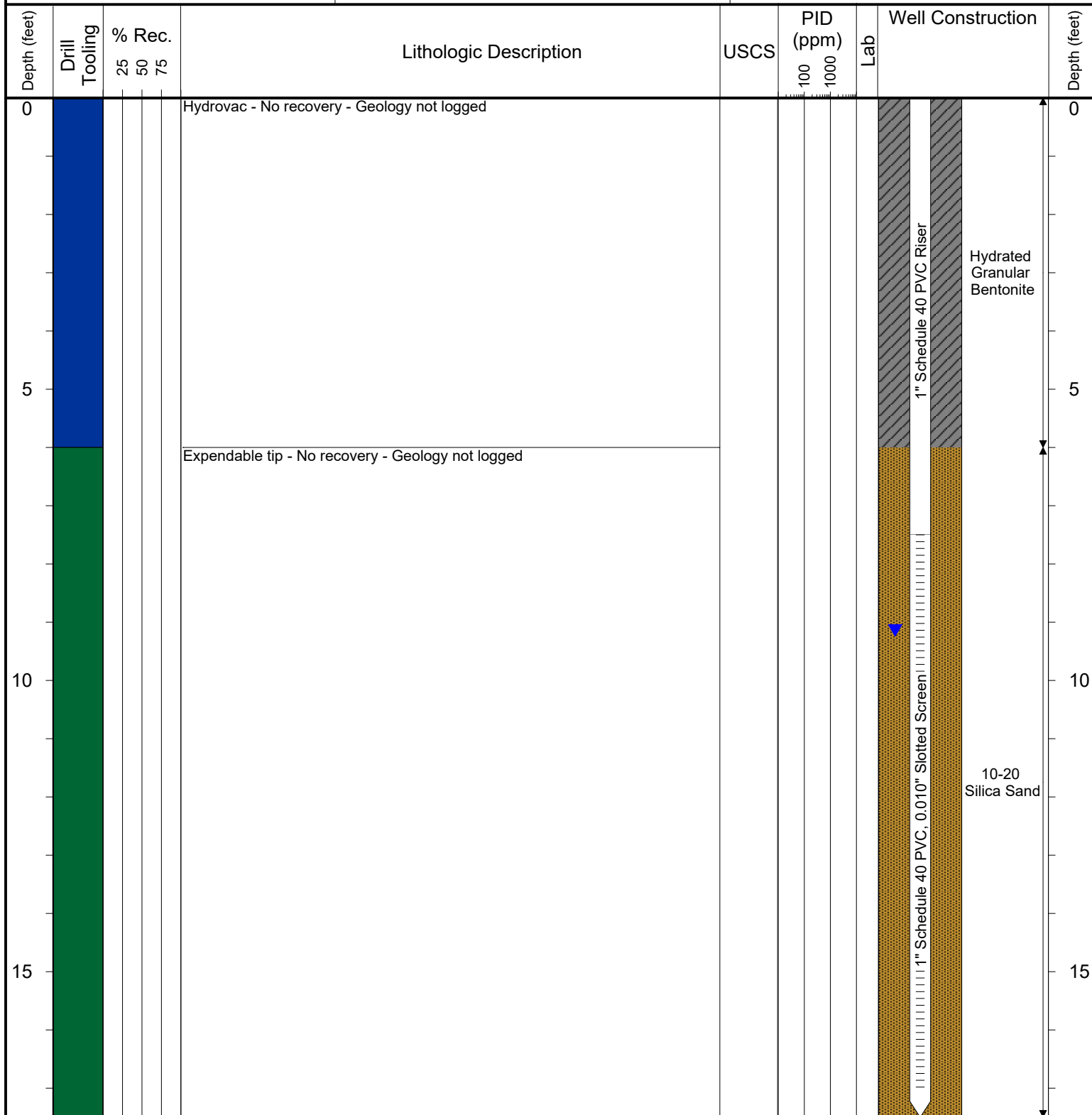
SURFACE COMPLETION: Flush Mount

LATITUDE (WGS 1984): 40.040206124

LONGITUDE (WGS 1984): -104.87233442

CASING ELEVATION (FT. AMSL): 4971.72

GROUND ELEVATION (FT. AMSL): 4971.92



Drilling / Sample Method:

- Macro-Core
- Hydrovac
- Expendable Well Tip
- Hand Auger

Laboratory Sample Types:

- Geotechnical Lab
- Analytical Chemistry Lab
- Geotechnical & Analytical Chemistry Lab



6899 Pecos Street, Unit C
Denver, Colorado 80221

CLIENT: Kerr-McGee Oil & Gas Onshore LP

LOGGED BY: Brandon LeVasseur

PROJECT MANAGER: Robert Cornez

DRILLING CONTRACTOR: Tasman Geosciences, Inc.

DRILLING EQUIPMENT: AMS PowerProbe

DRILL BIT SIZE (INCHES): 2-3/8"

DATE STARTED - COMPLETED: 6/19/2015

TOTAL WELL DEPTH (FT. BGS): 17.5

DEPTH TO WATER (FT. BGS): 8.34 (7/6/2015) ▼

Albert Sack Unit 1 Production Facility

BORING/WELL ID: BH08 (Abandoned)

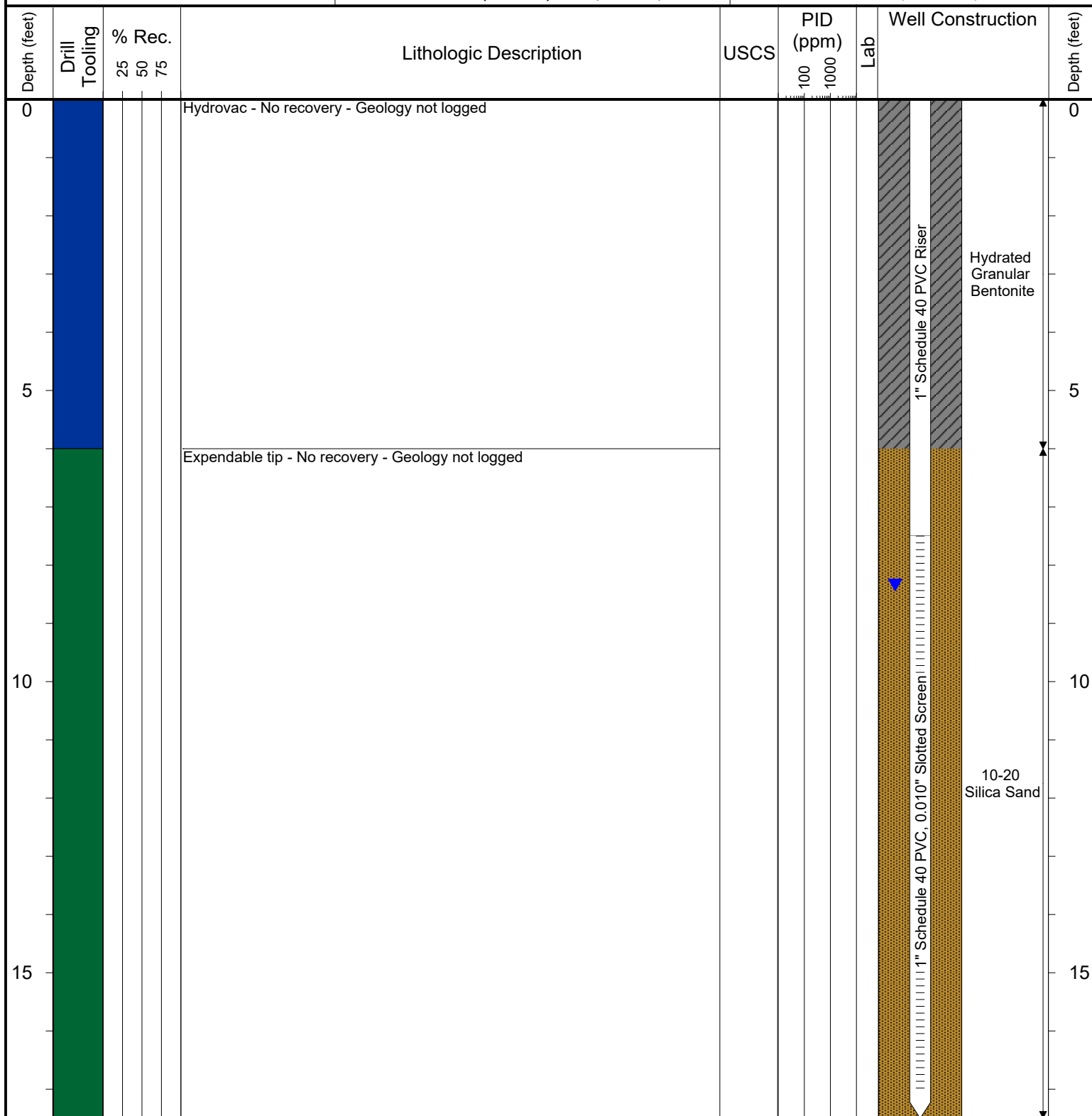
SURFACE COMPLETION: Flush Mount

LATITUDE (WGS 1984): 40.03994144

LONGITUDE (WGS 1984): -104.87236518

CASING ELEVATION (FT. AMSL): 4970.76

GROUND ELEVATION (FT. AMSL): 4970.94



Drilling / Sample Method:

- Macro-Core
- Hydrovac
- Expendable Well Tip
- Hand Auger

Laboratory Sample Types:

- Geotechnical Lab
- Analytical Chemistry Lab
- Geotechnical & Analytical Chemistry Lab



6899 Pecos Street, Unit C
Denver, Colorado 80221

CLIENT: Kerr-McGee Oil & Gas Onshore LP

LOGGED BY: Brandon LeVasseur

PROJECT MANAGER: Robert Cornez

DRILLING CONTRACTOR: Tasman Geosciences, Inc.

DRILLING EQUIPMENT: AMS PowerProbe

DRILL BIT SIZE (INCHES): 2-3/8"

DATE STARTED - COMPLETED: 3/12/2019

TOTAL WELL DEPTH (FT. BGS): 15

DEPTH TO WATER (FT. BGS): Not Measured

Albert Sack Unit 1 Production Facility

BORING/WELL ID: BH08R (Abandoned)

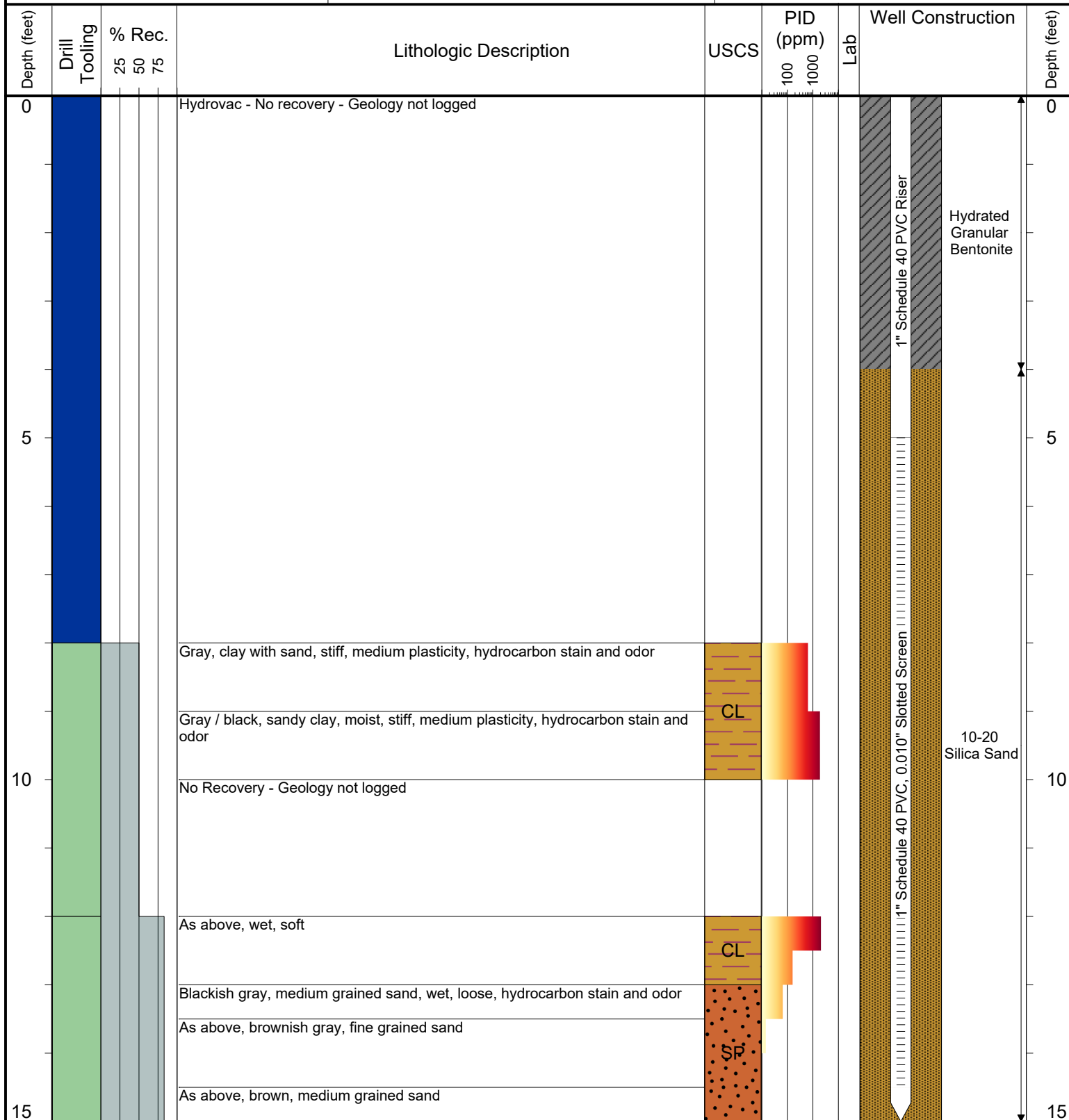
SURFACE COMPLETION: Flush Mount

LATITUDE (WGS 1984): Not Surveyed

LONGITUDE (WGS 1984): Not Surveyed

CASING ELEVATION (FT. AMSL): Not Surveyed

GROUND ELEVATION (FT. AMSL): Not Surveyed



Drilling / Sample Method:

Macro-Core
Expendable Well Tip

Hydrovac
Hand Auger

Laboratory Sample Types:

Geotechnical Lab
Analytical Chemistry Lab

Geotechnical & Analytical Chemistry Lab



6899 Pecos Street, Unit C
Denver, Colorado 80221

CLIENT: Kerr-McGee Oil & Gas Onshore LP

LOGGED BY: Brandon LeVasseur

PROJECT MANAGER: Robert Cornez

DRILLING CONTRACTOR: Tasman Geosciences, Inc.

DRILLING EQUIPMENT: AMS PowerProbe

DRILL BIT SIZE (INCHES): 2-3/8"

DATE STARTED - COMPLETED: 6/19/2015

TOTAL WELL DEPTH (FT. BGS): 17.25

DEPTH TO WATER (FT. BGS): 8.84 (7/6/2015) ▼

Albert Sack Unit 1 Production Facility

BORING/WELL ID: BH09 (Abandoned)

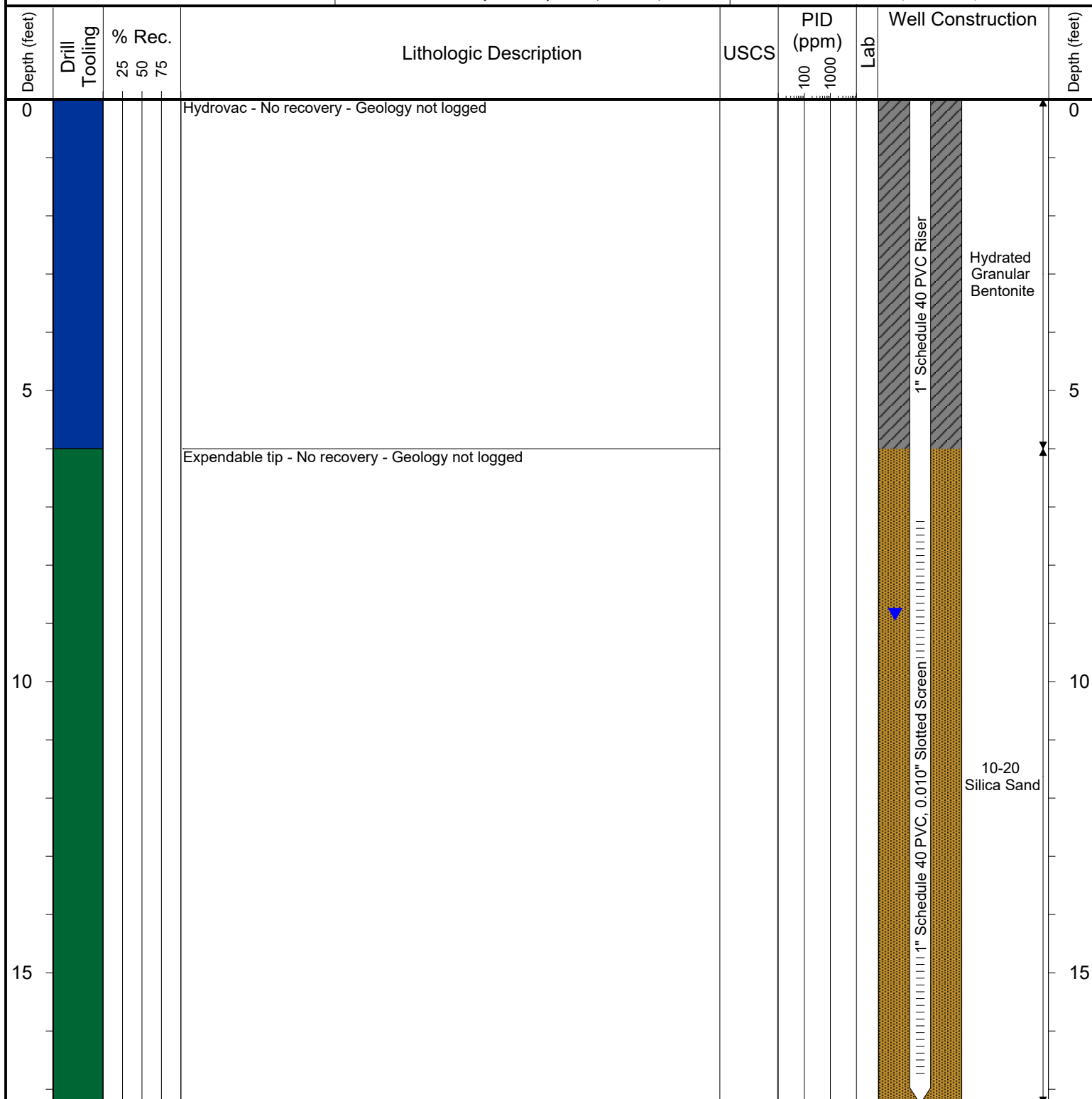
SURFACE COMPLETION: Flush Mount

LATITUDE (WGS 1984): 40.03996939

LONGITUDE (WGS 1984): -104.87213596

CASING ELEVATION (FT. AMSL): 4970.79

GROUND ELEVATION (FT. AMSL): 4971.02



Drilling / Sample Method:

 Macro-Core
 Hydrovac
 Expendable Well Tip
 Hand Auger

Laboratory Sample Types:

 Geotechnical Lab
 Analytical Chemistry Lab
 Geotechnical & Analytical Chemistry Lab



6899 Pecos Street, Unit C
Denver, Colorado 80221

CLIENT: Kerr-McGee Oil & Gas Onshore LP

LOGGED BY: Brandon LeVasseur

PROJECT MANAGER: Robert Cornez

DRILLING CONTRACTOR: Tasman Geosciences, Inc.

DRILLING EQUIPMENT: AMS PowerProbe

DRILL BIT SIZE (INCHES): 2-3/8"

DATE STARTED - COMPLETED: 6/19/2015

TOTAL WELL DEPTH (FT. BGS): 17.25

DEPTH TO WATER (FT. BGS): 8.24 (7/6/2015) ▼

Albert Sack Unit 1 Production Facility

BORING/WELL ID: BH10 (Abandoned)

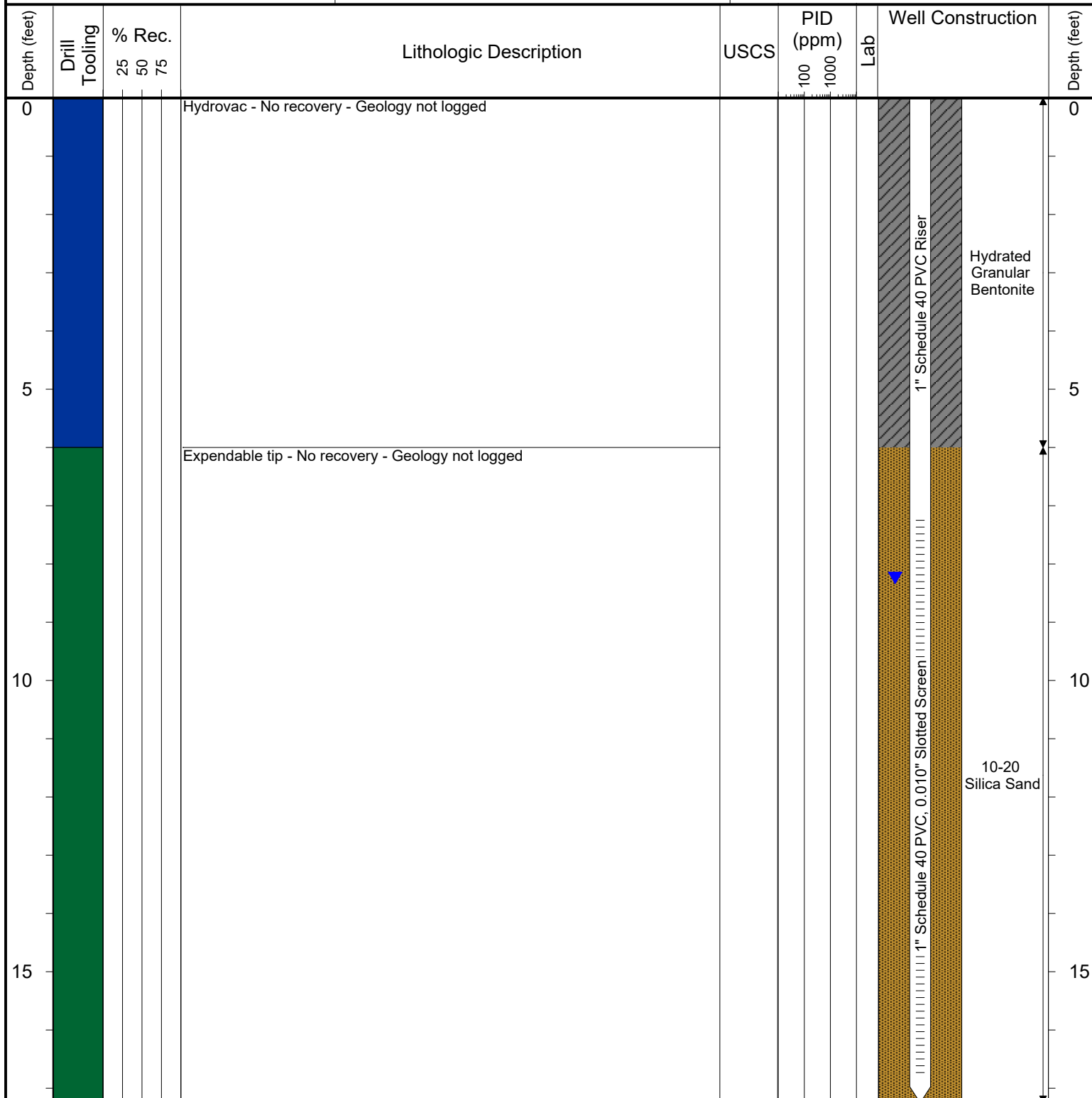
SURFACE COMPLETION: Flush Mount

LATITUDE (WGS 1984): 40.04010656

LONGITUDE (WGS 1984): -104.8720379

CASING ELEVATION (FT. AMSL): 4971.16

GROUND ELEVATION (FT. AMSL): 4971.56



Drilling / Sample Method:

Macro-Core
 Expendable Well Tip
 Hydrovac
 Hand Auger

Laboratory Sample Types:

Geotechnical Lab
 Analytical Chemistry Lab
 Geotechnical & Analytical Chemistry Lab



6899 Pecos Street, Unit C
Denver, Colorado 80221

CLIENT: Kerr-McGee Oil & Gas Onshore LP

LOGGED BY: Brandon LeVasseur

PROJECT MANAGER: Robert Cornez

DRILLING CONTRACTOR: Tasman Geosciences, Inc.

DRILLING EQUIPMENT: AMS PowerProbe

DRILL BIT SIZE (INCHES): 2-3/8"

DATE STARTED - COMPLETED: 3/18/2019

TOTAL WELL DEPTH (FT. BGS): 14

DEPTH TO WATER (FT. BGS): Not Measured

Albert Sack Unit 1 Production Facility

BORING/WELL ID: BH10R (Abandoned)

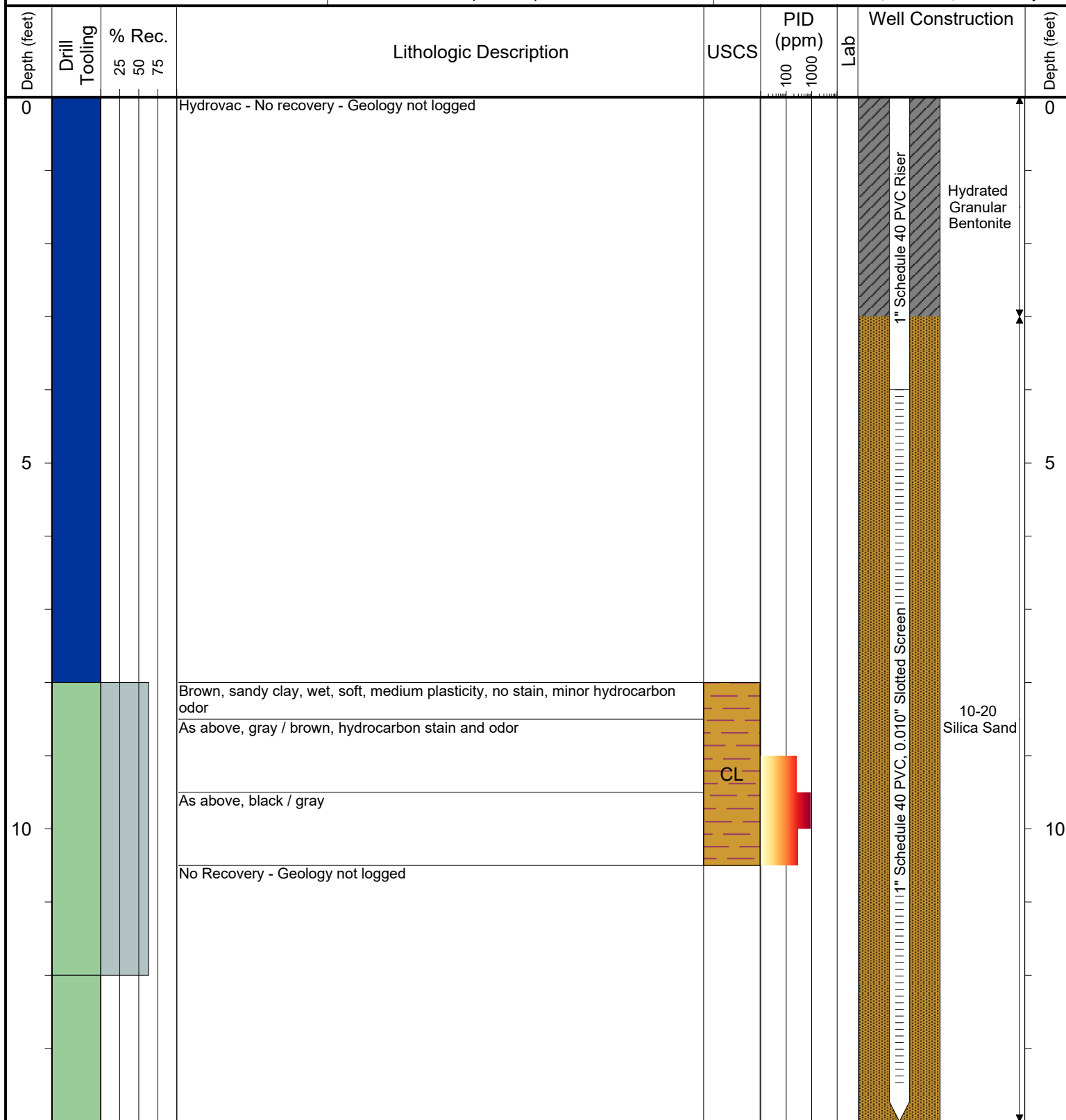
SURFACE COMPLETION: Flush Mount

LATITUDE (WGS 1984): Not Surveyed

LONGITUDE (WGS 1984): Not Surveyed

CASING ELEVATION (FT. AMSL): Not Surveyed

GROUND ELEVATION (FT. AMSL): Not Surveyed



Drilling / Sample Method:

Macro-Core
 Hydrovac
 Expendable Well Tip
 Hand Auger

Laboratory Sample Types:

Geotechnical Lab
 Analytical Chemistry Lab
 Geotechnical & Analytical Chemistry Lab



6899 Pecos Street, Unit C
Denver, Colorado 80221

CLIENT: Kerr-McGee Oil & Gas Onshore LP

LOGGED BY: Brandon LeVasseur

PROJECT MANAGER: Robert Cornez

DRILLING CONTRACTOR: Tasman Geosciences, Inc.

DRILLING EQUIPMENT: AMS PowerProbe

DRILL BIT SIZE (INCHES): 2-3/8"

DATE STARTED - COMPLETED: 10/12/2015

TOTAL WELL DEPTH (FT. BGS): 13

DEPTH TO WATER (FT. BGS): 6.82 (10/26/2015) ▼

Albert Sack Unit 1 Production Facility

BORING/WELL ID: BH11 (Destroyed)

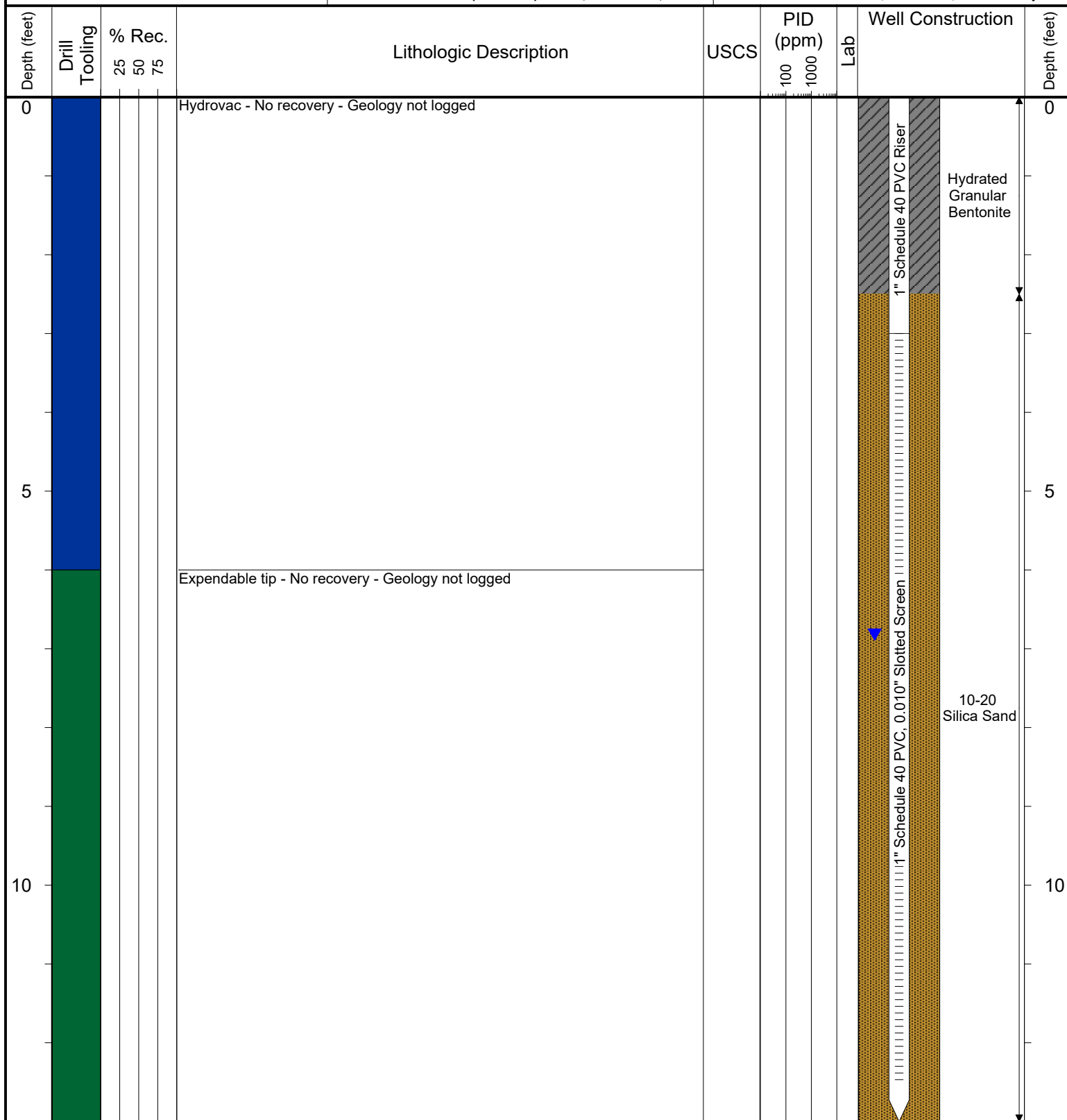
SURFACE COMPLETION: Flush Mount

LATITUDE (WGS 1984): 40.039873411

LONGITUDE (WGS 1984): -104.8720966

CASING ELEVATION (FT. AMSL): 4970.58

GROUND ELEVATION (FT. AMSL): Not Surveyed



Drilling / Sample Method:

Macro-Core

Hydrovac

Expendable Well Tip

Hand Auger

Laboratory Sample Types:

Geotechnical Lab

Analytical Chemistry Lab

Geotechnical & Analytical Chemistry Lab



6899 Pecos Street, Unit C
Denver, Colorado 80221

CLIENT: Kerr-McGee Oil & Gas Onshore LP

LOGGED BY: Brandon LeVasseur

PROJECT MANAGER: Robert Cornez

DRILLING CONTRACTOR: Tasman Geosciences, Inc.

DRILLING EQUIPMENT: AMS PowerProbe

DRILL BIT SIZE (INCHES): 2-3/8"

DATE STARTED - COMPLETED: 5/9/2016

TOTAL WELL DEPTH (FT. BGS): 15

DEPTH TO WATER (FT. BGS): 7.05 (7/12/2016) ▼

Albert Sack Unit 1 Production Facility

BORING/WELL ID: BH11R (Abandoned)

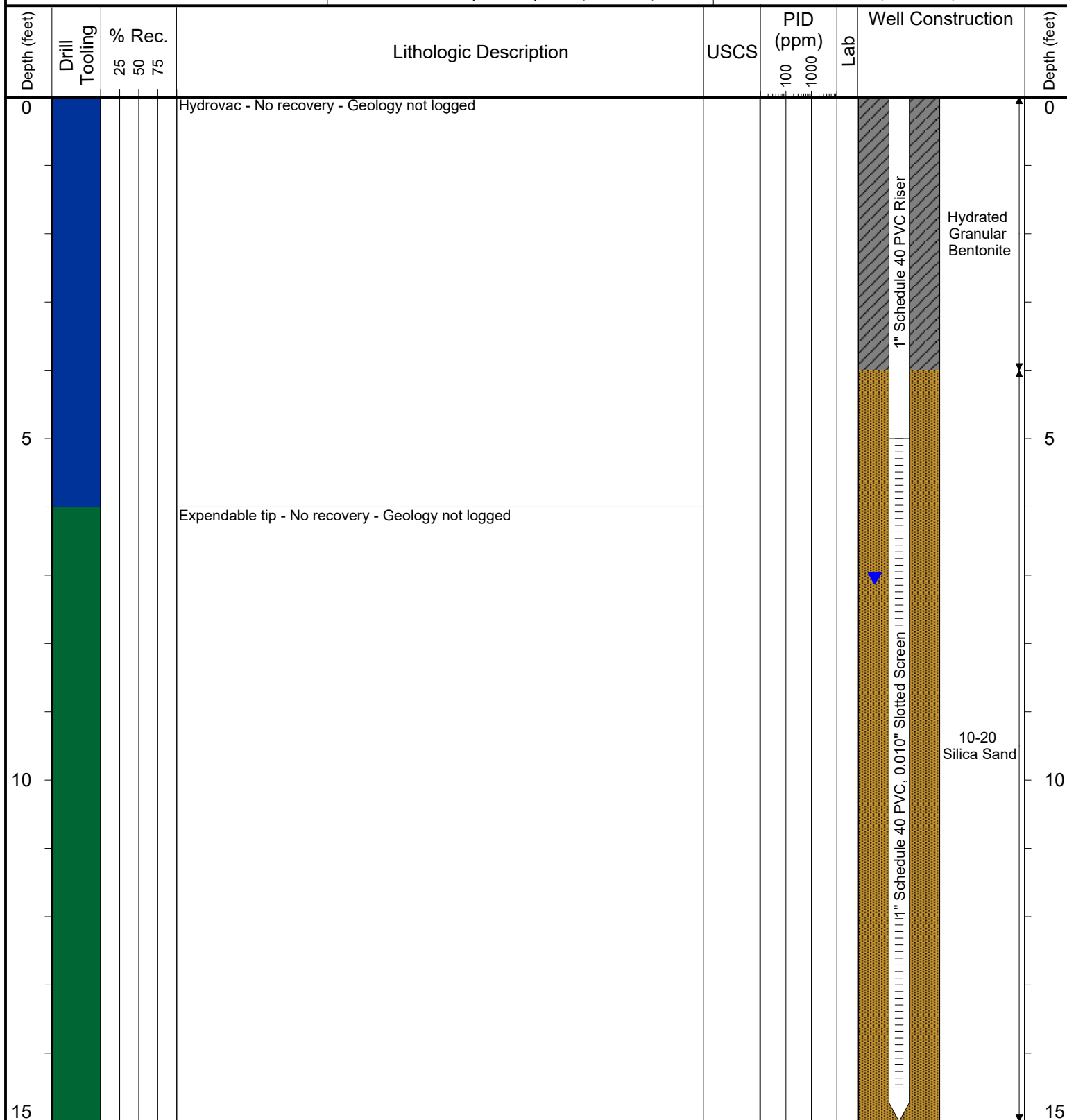
SURFACE COMPLETION: Flush Mount

LATITUDE (WGS 1984): 40.039869341

LONGITUDE (WGS 1984): -104.87210222

CASING ELEVATION (FT. AMSL): 4970.45

GROUND ELEVATION (FT. AMSL): 4970.64



Drilling / Sample Method:

Macro-Core
Expendable Well Tip

Hydrovac
Hand Auger

Laboratory Sample Types:

Geotechnical Lab
Analytical Chemistry Lab

Geotechnical & Analytical Chemistry Lab



6899 Pecos Street, Unit C
Denver, Colorado 80221

CLIENT: Kerr-McGee Oil & Gas Onshore LP

LOGGED BY: Brandon LeVasseur

PROJECT MANAGER: Robert Cornez

DRILLING CONTRACTOR: Tasman Geosciences, Inc.

DRILLING EQUIPMENT: AMS PowerProbe

DRILL BIT SIZE (INCHES): 2-3/8"

DATE STARTED - COMPLETED: 3/15/2019

TOTAL WELL DEPTH (FT. BGS): 14

DEPTH TO WATER (FT. BGS): Not Measured

Albert Sack Unit 1 Production Facility

BORING/WELL ID: BH11R2 (Abandoned)

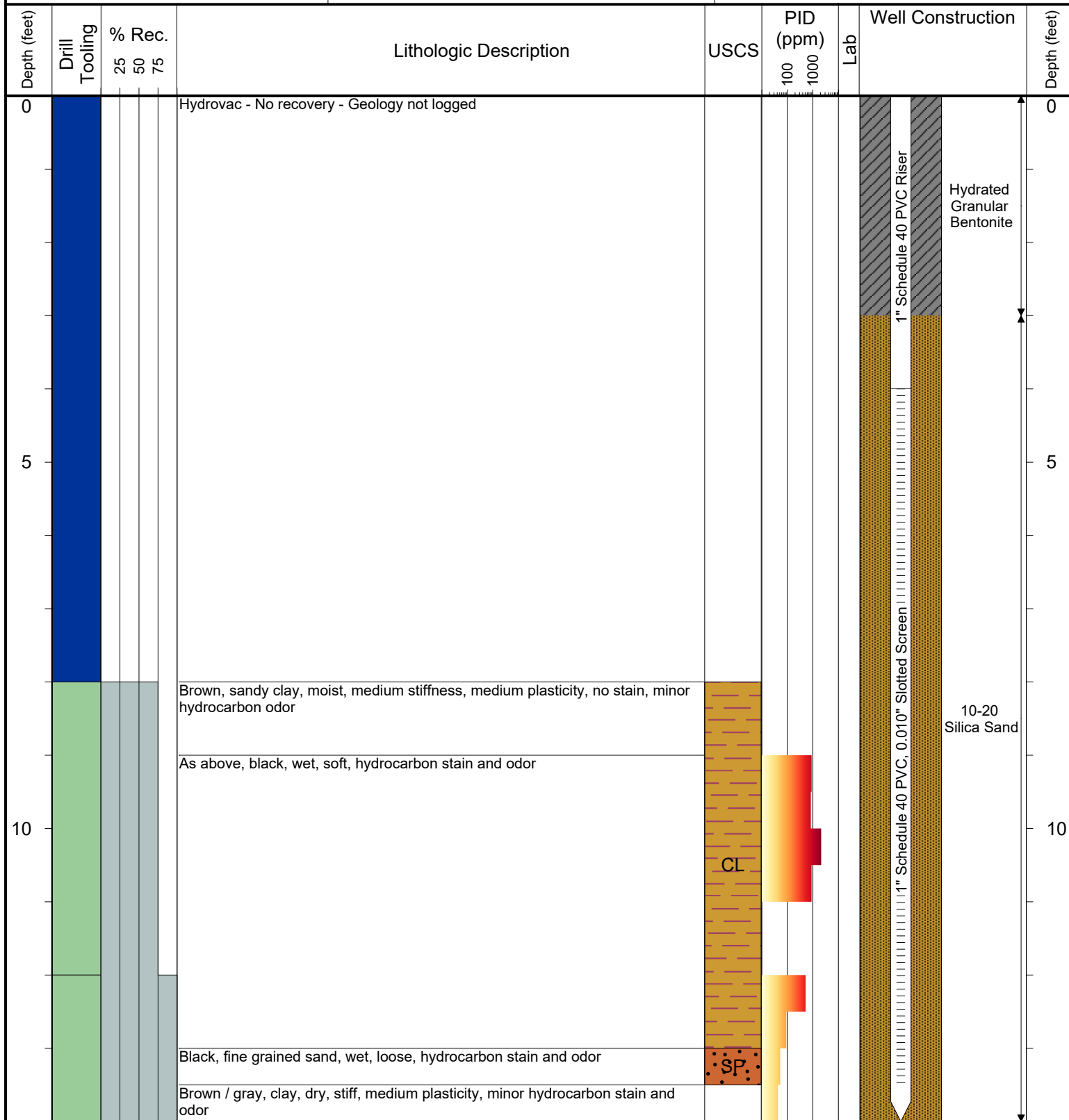
SURFACE COMPLETION: Flush Mount

LATITUDE (WGS 1984): Not Surveyed

LONGITUDE (WGS 1984): Not Surveyed

CASING ELEVATION (FT. AMSL): Not Surveyed

GROUND ELEVATION (FT. AMSL): Not Surveyed



Drilling / Sample Method:

Macro-Core
Expendable Well Tip

Hydrovac
Hand Auger

Laboratory Sample Types:

Geotechnical Lab
Analytical Chemistry Lab

Geotechnical & Analytical Chemistry Lab



6899 Pecos Street, Unit C
Denver, Colorado 80221

CLIENT: Kerr-McGee Oil & Gas Onshore LP

LOGGED BY: Brandon LeVasseur

PROJECT MANAGER: Robert Cornez

DRILLING CONTRACTOR: Tasman Geosciences, Inc.

DRILLING EQUIPMENT: AMS PowerProbe

DRILL BIT SIZE (INCHES): 2-3/8"

DATE STARTED - COMPLETED: 10/12/2015

TOTAL WELL DEPTH (FT. BGS): 15

DEPTH TO WATER (FT. BGS): 6.45 (10/26/2015) ▼

Albert Sack Unit 1 Production Facility

BORING/WELL ID: BH12 (Abandoned)

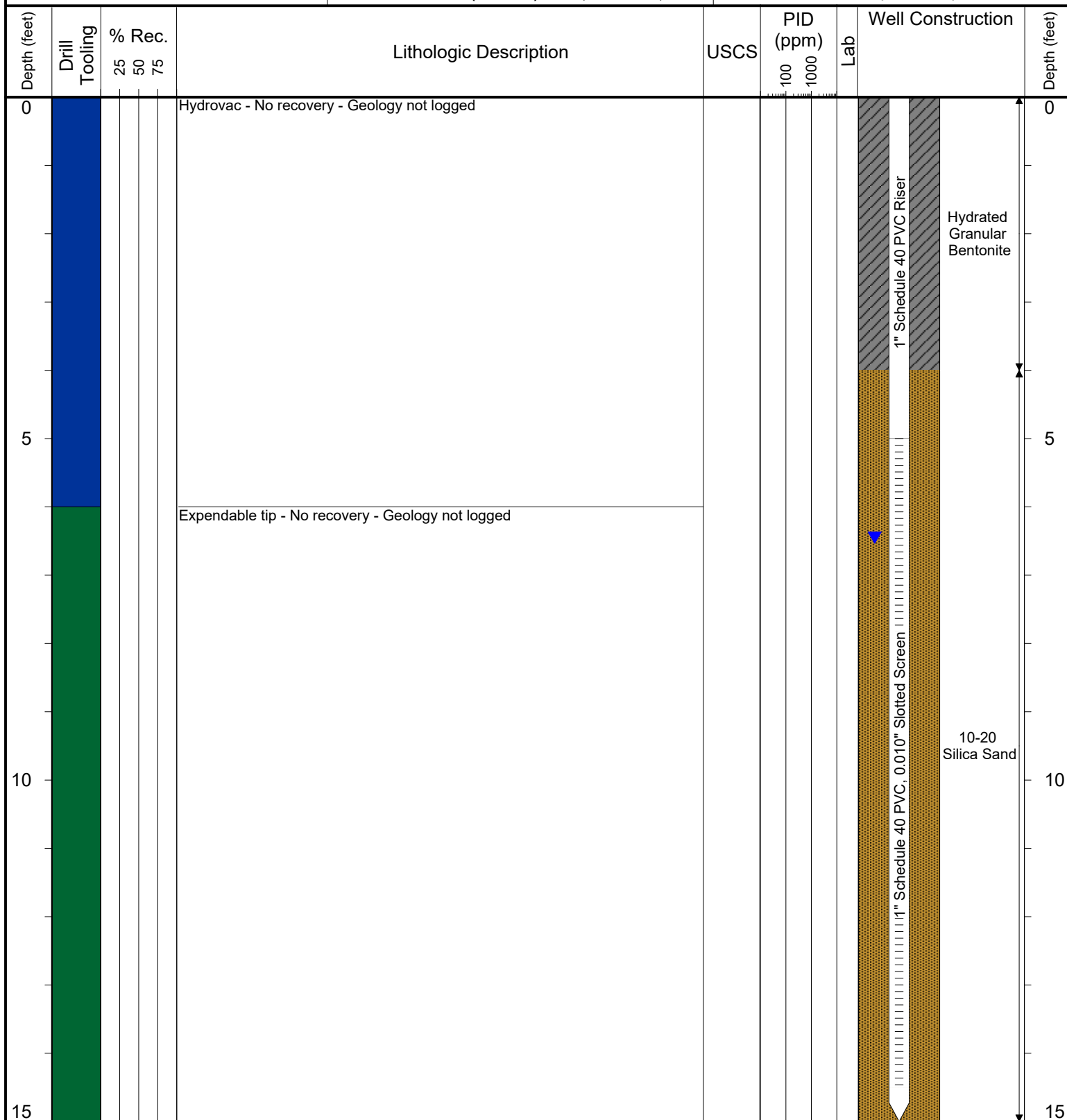
SURFACE COMPLETION: Flush Mount

LATITUDE (WGS 1984): 40.039779664

LONGITUDE (WGS 1984): -104.87224641

CASING ELEVATION (FT. AMSL): 4969.8

GROUND ELEVATION (FT. AMSL): 4970.21



Drilling / Sample Method:

- Macro-Core
- Hydrovac
- Expendable Well Tip
- Hand Auger

Laboratory Sample Types:

- Geotechnical Lab
- Analytical Chemistry Lab
- Geotechnical & Analytical Chemistry Lab



6899 Pecos Street, Unit C
Denver, Colorado 80221

CLIENT: Kerr-McGee Oil & Gas Onshore LP

LOGGED BY: Brandon LeVasseur

PROJECT MANAGER: Robert Cornez

DRILLING CONTRACTOR: Tasman Geosciences, Inc.

DRILLING EQUIPMENT: AMS PowerProbe

DRILL BIT SIZE (INCHES): 2-3/8"

DATE STARTED - COMPLETED: 3/15/2019

TOTAL WELL DEPTH (FT. BGS): 14

DEPTH TO WATER (FT. BGS): Not Measured

Albert Sack Unit 1 Production Facility

BORING/WELL ID: BH12R (Abandoned)

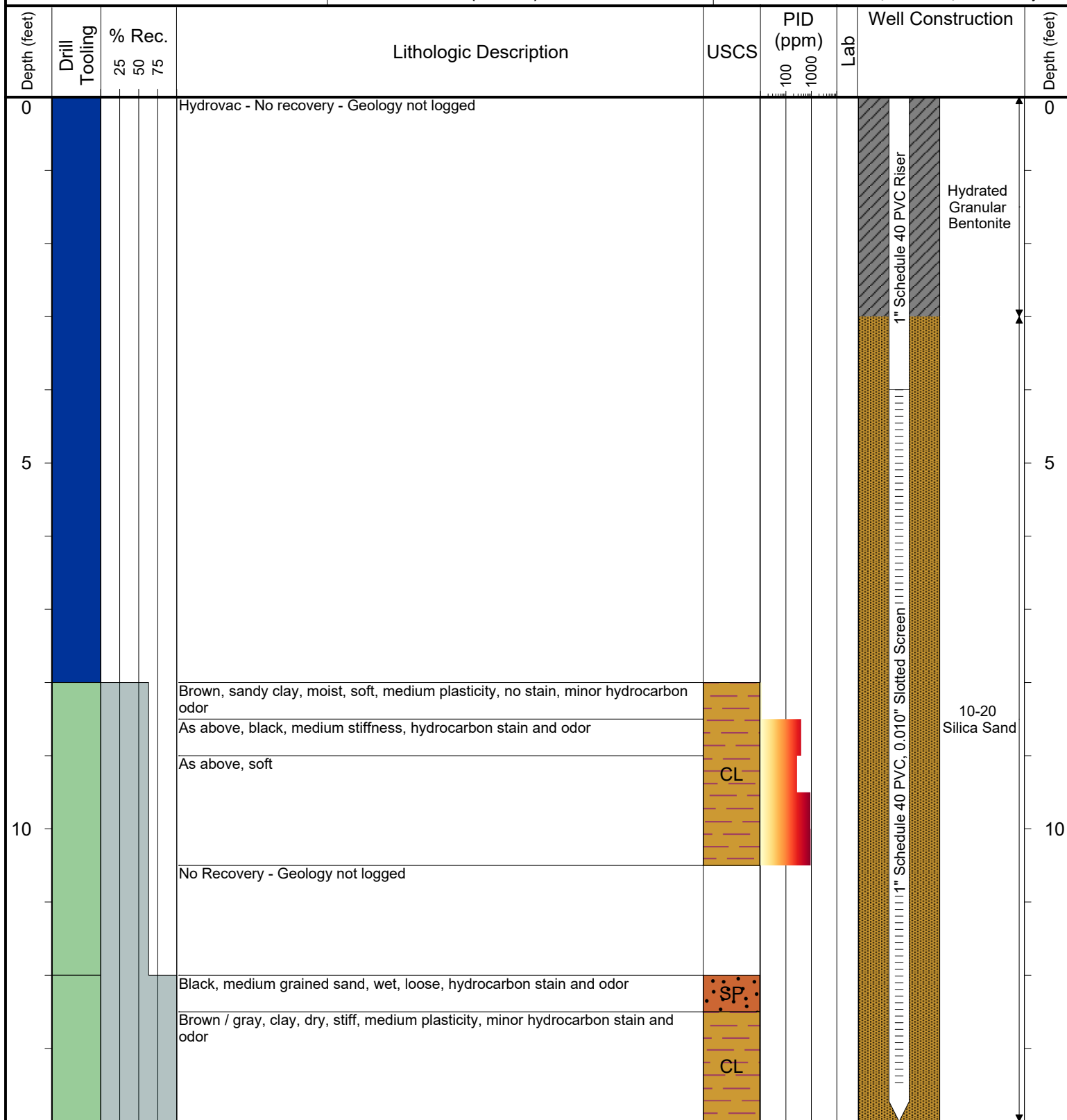
SURFACE COMPLETION: Flush Mount

LATITUDE (WGS 1984): Not Surveyed

LONGITUDE (WGS 1984): Not Surveyed

CASING ELEVATION (FT. AMSL): Not Surveyed

GROUND ELEVATION (FT. AMSL): Not Surveyed



Drilling / Sample Method:

Macro-Core
Expendable Well Tip

Hydrovac
Hand Auger

Laboratory Sample Types:

Geotechnical Lab
Analytical Chemistry Lab

Geotechnical & Analytical Chemistry Lab



DEPTH TO WATER (FT. BGS): Not Measured

GROUND ELEVATION (FT. AMSL): Not Surveyed





6899 Pecos Street, Unit C
Denver, Colorado 80221

CLIENT: Kerr-McGee Oil & Gas Onshore LP

LOGGED BY: Brandon LeVasseur

PROJECT MANAGER: Robert Cornez

DRILLING CONTRACTOR: Tasman Geosciences, Inc.

DRILLING EQUIPMENT: AMS PowerProbe

DRILL BIT SIZE (INCHES): 2-3/8"

DATE STARTED - COMPLETED: 3/15/2019

TOTAL WELL DEPTH (FT. BGS): 14

DEPTH TO WATER (FT. BGS): Not Measured

Albert Sack Unit 1 Production Facility

BORING/WELL ID: BH14 (Abandoned)

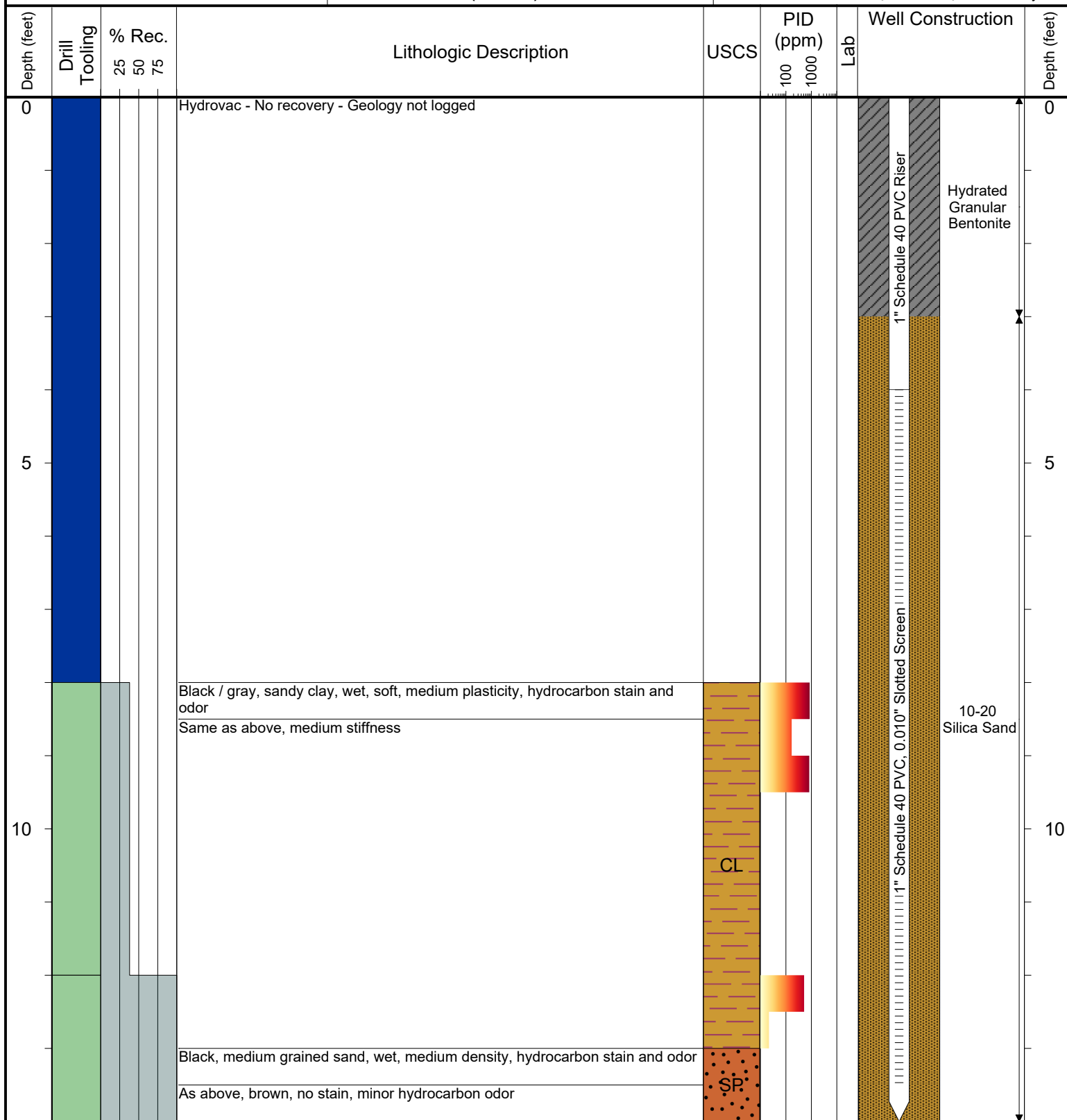
SURFACE COMPLETION: Flush Mount

LATITUDE (WGS 1984): Not Surveyed

LONGITUDE (WGS 1984): Not Surveyed

CASING ELEVATION (FT. AMSL): Not Surveyed

GROUND ELEVATION (FT. AMSL): Not Surveyed



Drilling / Sample Method:

Macro-Core
 Expendable Well Tip
 Hydrovac
 Hand Auger

Laboratory Sample Types:

Geotechnical Lab
 Analytical Chemistry Lab
 Geotechnical & Analytical Chemistry Lab



6899 Pecos Street, Unit C
Denver, Colorado 80221

CLIENT: Kerr-McGee Oil & Gas Onshore LP

LOGGED BY: Brandon LeVasseur

PROJECT MANAGER: Robert Cornez

DRILLING CONTRACTOR: Tasman Geosciences, Inc.

DRILLING EQUIPMENT: AMS PowerProbe

DRILL BIT SIZE (INCHES): 2-3/8"

DATE STARTED - COMPLETED: 3/18/2019

TOTAL WELL DEPTH (FT. BGS): 14

DEPTH TO WATER (FT. BGS): Not Measured

Albert Sack Unit 1 Production Facility

BORING/WELL ID: BH15 (Abandoned)

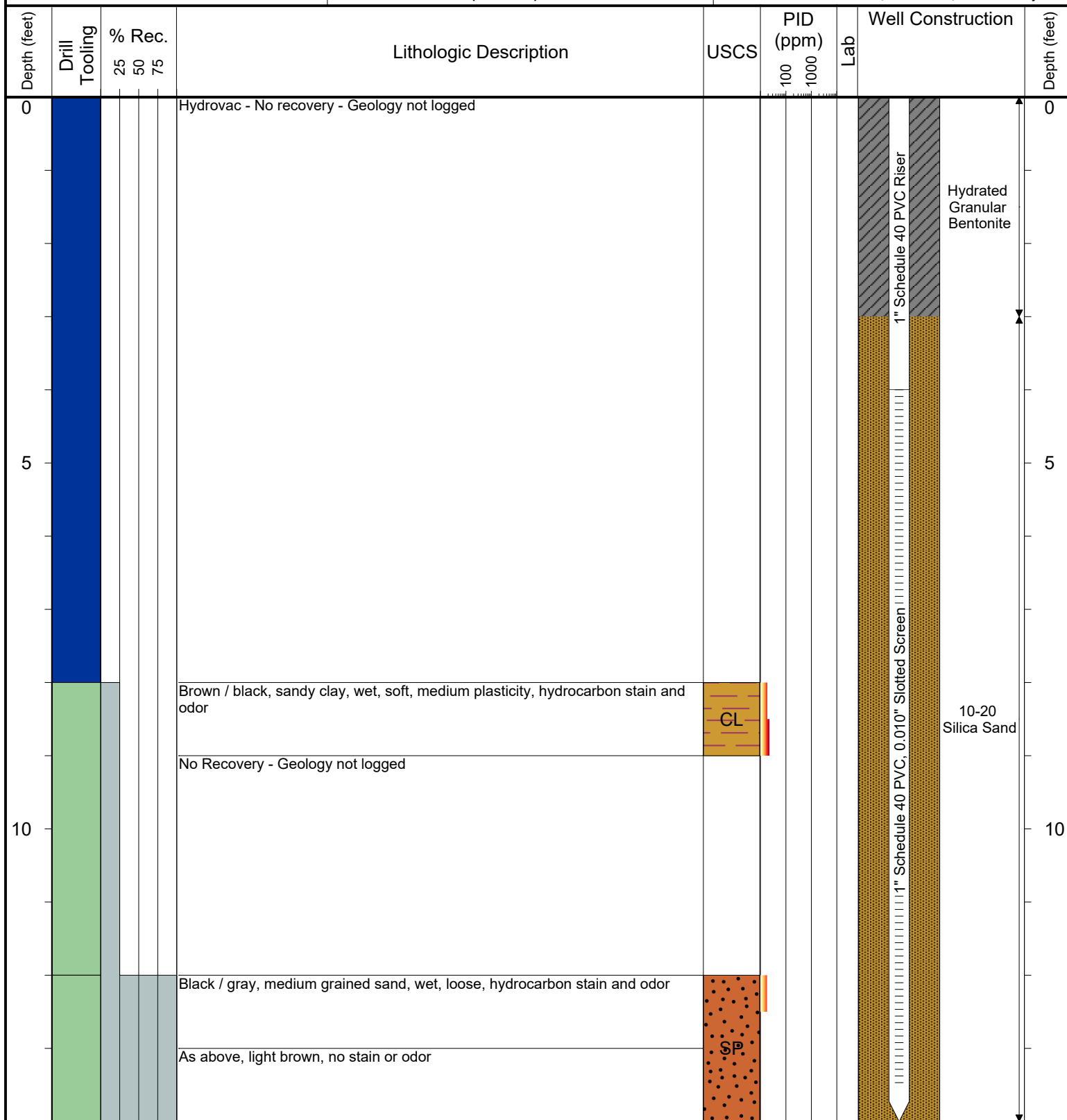
SURFACE COMPLETION: Flush Mount

LATITUDE (WGS 1984): Not Surveyed

LONGITUDE (WGS 1984): Not Surveyed

CASING ELEVATION (FT. AMSL): Not Surveyed

GROUND ELEVATION (FT. AMSL): Not Surveyed



Drilling / Sample Method:

Macro-Core
Expendable Well Tip

Hydrovac
Hand Auger

Laboratory Sample Types:

Geotechnical Lab
Analytical Chemistry Lab

Geotechnical & Analytical Chemistry Lab