



6899 Pecos Street, Unit C
Denver, Colorado 80221

CLIENT: Kerr-McGee Oil & Gas Onshore LP

LOGGED BY: Brandon LeVasseur

PROJECT MANAGER: Robert Cornez

DRILLING CONTRACTOR: Tasman Geosciences, Inc.

DRILLING EQUIPMENT: AMS Powerprobe 9300-SK

DRILL BIT SIZE (INCHES): 2.375"

DATE STARTED - COMPLETED: 4/1/2015

TOTAL WELL DEPTH (FT. BGS): 19

DEPTH TO WATER (FT. BGS): 10.88 (4/14/2015) ▼

Coughlin Red VV 22-1, 22-2
Production Facility

BORING / WELL ID: BH01 (Destroyed)

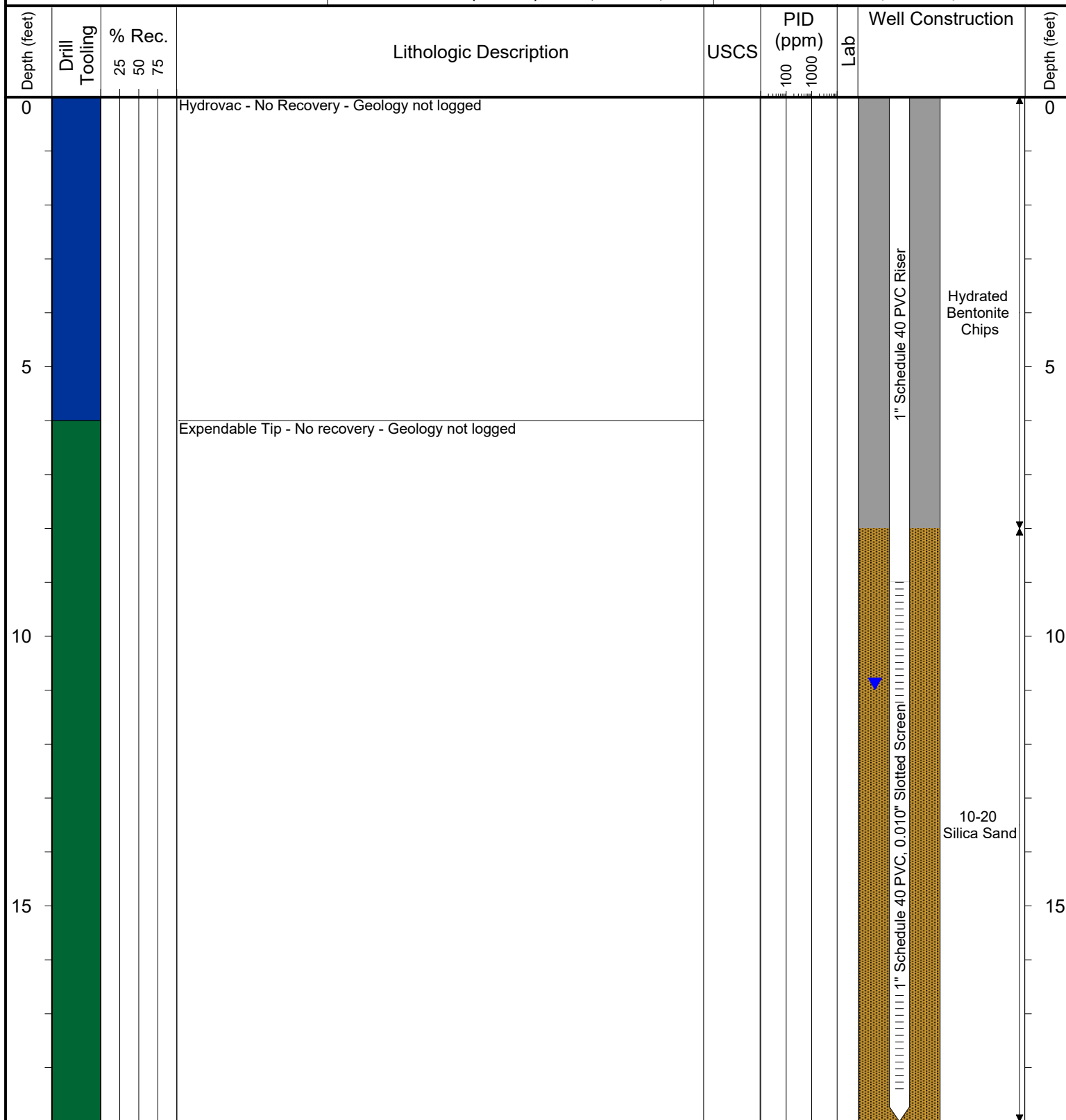
SURFACE COMPLETION: Flush Mount

LATITUDE (WGS 1984): 40.0401061

LONGITUDE (WGS 1984): -104.873063

CASING ELEVATION (FT. AMSL): 4972.985

GROUND ELEVATION (FT. AMSL): 4973.085



Drilling / Sample Method:

Macro-Core
 Expendable Well Tip
 Hydrovac
 Hand Auger

Laboratory Sample Types:

Geotechnical Lab
 Analytical Chemistry Lab
 Geotechnical & Analytical Chemistry Lab



6899 Pecos Street, Unit C
Denver, Colorado 80221

CLIENT: Kerr-McGee Oil & Gas Onshore LP

LOGGED BY: Brandon LeVasseur

PROJECT MANAGER: Robert Cornez

DRILLING CONTRACTOR: Tasman Geosciences, Inc.

DRILLING EQUIPMENT: AMS Powerprobe 9300-SK

DRILL BIT SIZE (INCHES): 2.375"

DATE STARTED - COMPLETED: 4/1/2015

TOTAL WELL DEPTH (FT. BGS): 19

DEPTH TO WATER (FT. BGS): 10.88 (4/14/2015) ▼

Coughlin Red VV 22-1, 22-2
Production Facility

BORING / WELL ID: BH02 (Destroyed)

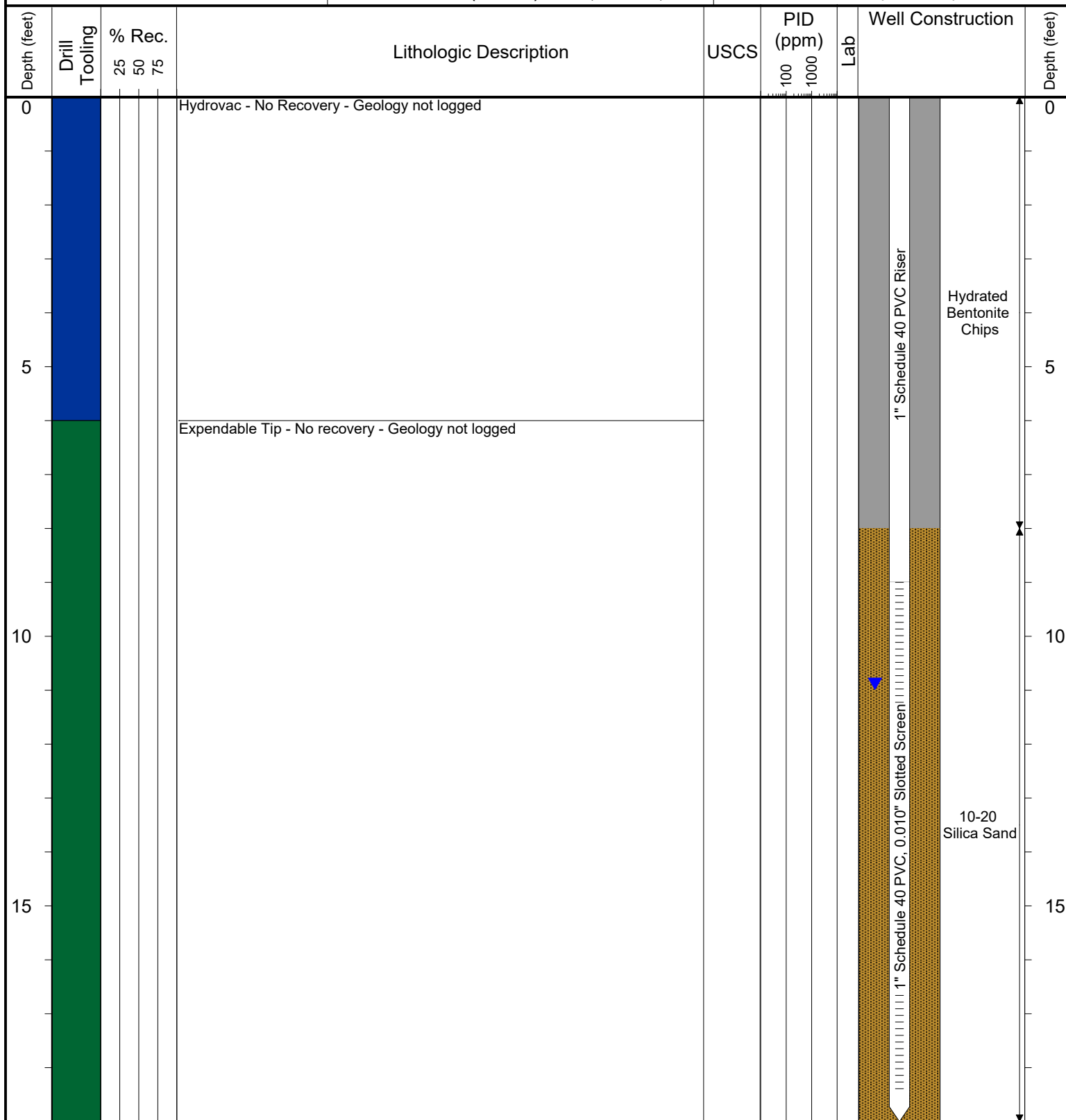
SURFACE COMPLETION: Flush Mount

LATITUDE (WGS 1984): 40.0402048

LONGITUDE (WGS 1984): -104.8728842

CASING ELEVATION (FT. AMSL): 4972.805

GROUND ELEVATION (FT. AMSL): 4972.955



Drilling / Sample Method:

Macro-Core

Hydrovac

Expendable Well Tip

Hand Auger

Laboratory Sample Types:

Geotechnical Lab

Analytical Chemistry Lab

Geotechnical & Analytical Chemistry Lab



6899 Pecos Street, Unit C
Denver, Colorado 80221

CLIENT: Kerr-McGee Oil & Gas Onshore LP

LOGGED BY: Brandon LeVasseur

PROJECT MANAGER: Robert Cornez

DRILLING CONTRACTOR: Tasman Geosciences, Inc.

DRILLING EQUIPMENT: AMS Powerprobe 9300-SK

DRILL BIT SIZE (INCHES): 2.375"

DATE STARTED - COMPLETED: 3/12/2019

TOTAL WELL DEPTH (FT. BGS): 16

DEPTH TO WATER (FT. BGS): 10.39 (3/28/2019) ▼

Coughlin Red VV 22-1, 22-2
Production Facility

BORING / WELL ID: BH02R

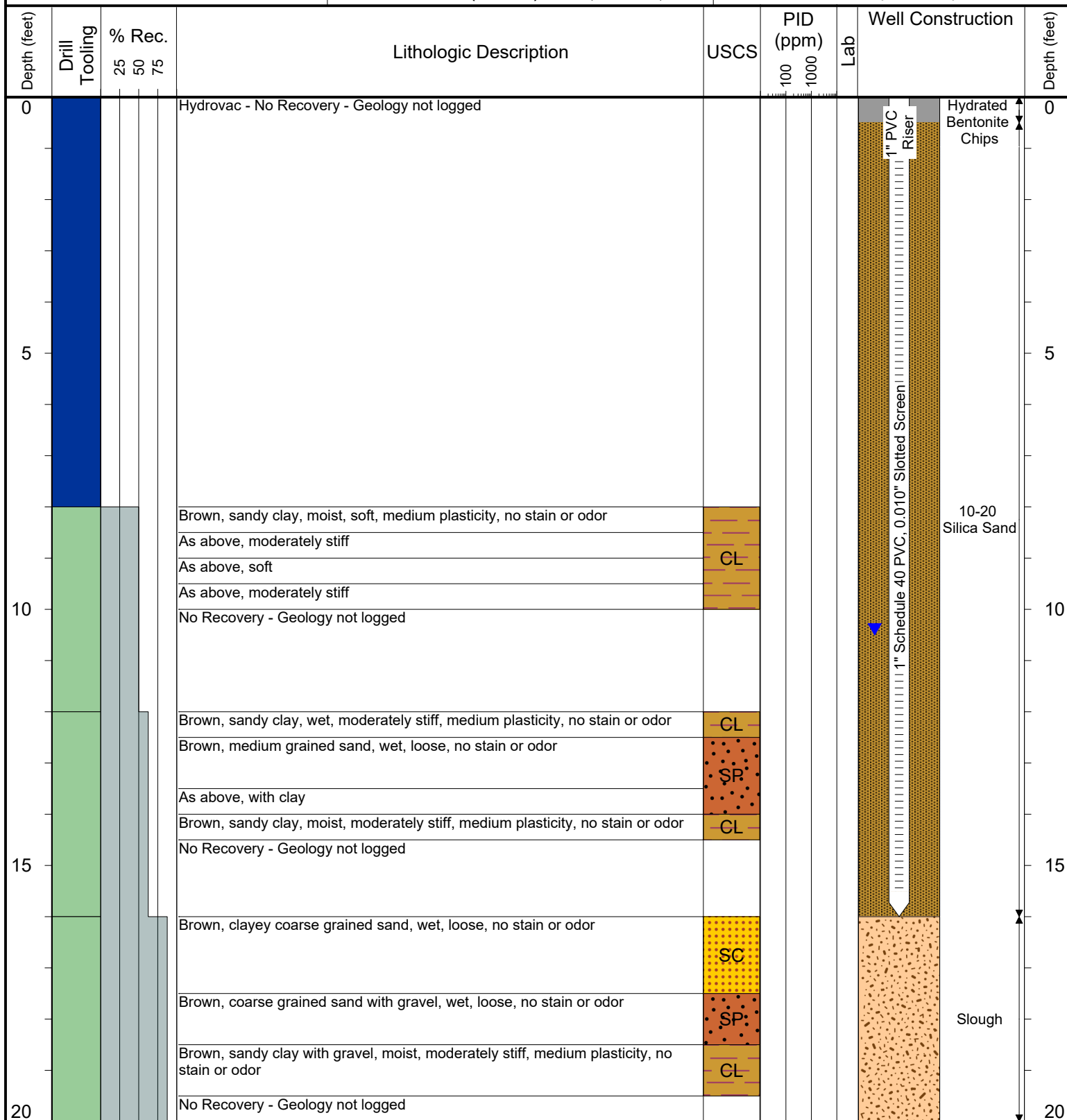
SURFACE COMPLETION: Flush Mount

LATITUDE (WGS 1984): 40.040198170955

LONGITUDE (WGS 1984): -104.87290669437

CASING ELEVATION (FT. AMSL): 4971.54

GROUND ELEVATION (FT. AMSL): 4971.69



Drilling / Sample Method:

Macro-Core
Expendable Well Tip

Hydrovac
Hand Auger

Laboratory Sample Types:

Geotechnical Lab
Analytical Chemistry Lab

Geotechnical & Analytical Chemistry Lab



6899 Pecos Street, Unit C
Denver, Colorado 80221

CLIENT: Kerr-McGee Oil & Gas Onshore LP

LOGGED BY: Brandon LeVasseur

PROJECT MANAGER: Robert Cornez

DRILLING CONTRACTOR: Tasman Geosciences, Inc.

DRILLING EQUIPMENT: AMS Powerprobe 9300-SK

DRILL BIT SIZE (INCHES): 2.375"

DATE STARTED - COMPLETED: 4/1/2015

TOTAL WELL DEPTH (FT. BGS): 19

DEPTH TO WATER (FT. BGS): 10.64 (4/14/2015) ▼

Coughlin Red VV 22-1, 22-2
Production Facility

BORING / WELL ID: BH03 (Destroyed)

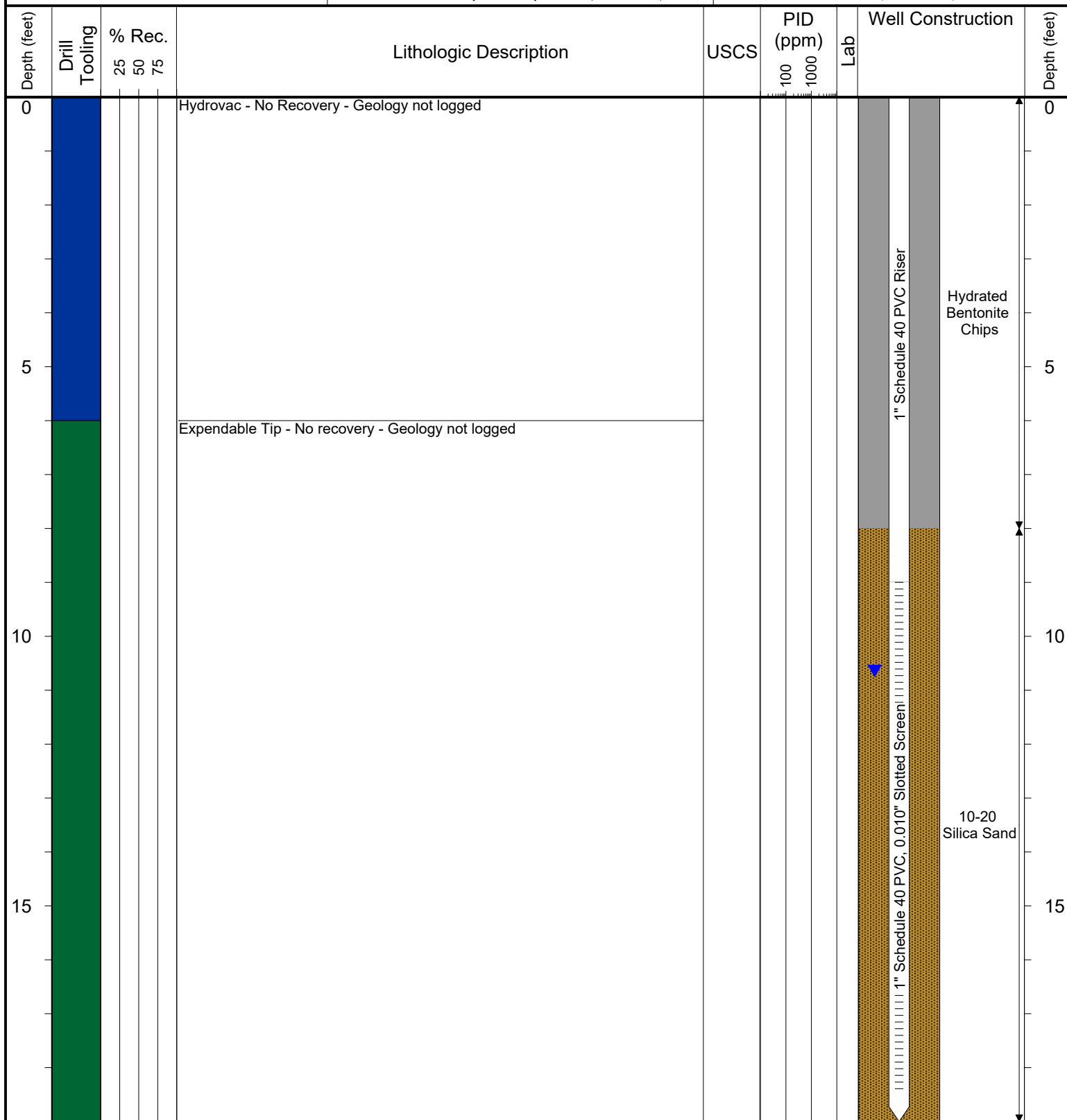
SURFACE COMPLETION: Flush Mount

LATITUDE (WGS 1984): 40.0400873

LONGITUDE (WGS 1984): -104.872822

CASING ELEVATION (FT. AMSL): 4972.345

GROUND ELEVATION (FT. AMSL): 4972.365



Drilling / Sample Method:

Macro-Core

Hydrovac

Expendable Well Tip

Hand Auger

Laboratory Sample Types:

Geotechnical Lab

Analytical Chemistry Lab

Geotechnical & Analytical Chemistry Lab



6899 Pecos Street, Unit C
Denver, Colorado 80221

CLIENT: Kerr-McGee Oil & Gas Onshore LP

LOGGED BY: Brandon LeVasseur

PROJECT MANAGER: Robert Cornez

DRILLING CONTRACTOR: Tasman Geosciences, Inc.

DRILLING EQUIPMENT: AMS Powerprobe 9300-SK

DRILL BIT SIZE (INCHES): 2.375"

DATE STARTED - COMPLETED: 4/1/2015

TOTAL WELL DEPTH (FT. BGS): 19

DEPTH TO WATER (FT. BGS): 10.97 (4/14/2015) ▼

Coughlin Red VV 22-1, 22-2
Production Facility

BORING / WELL ID: BH04 (Destroyed)

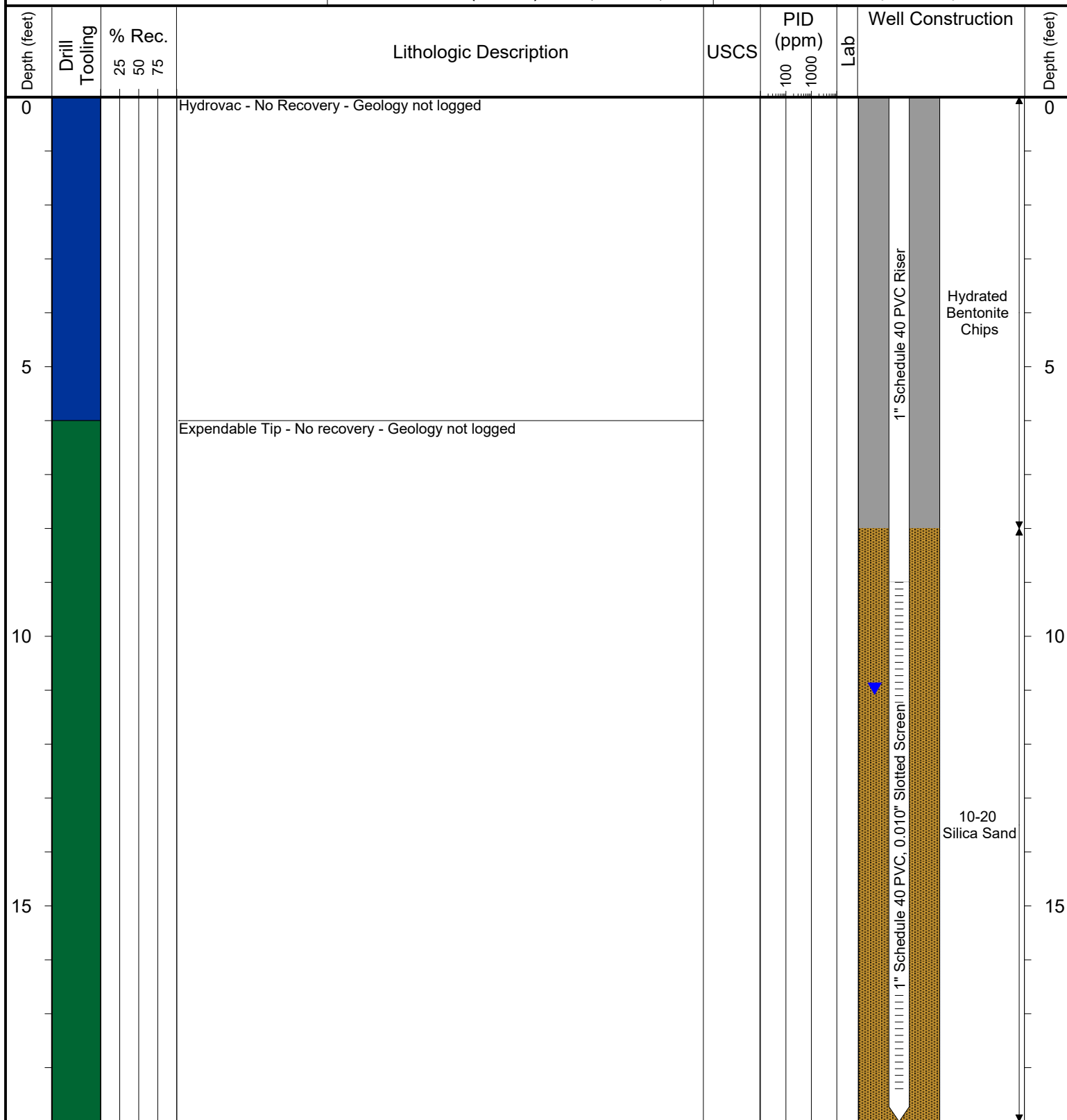
SURFACE COMPLETION: Flush Mount

LATITUDE (WGS 1984): 40.0400821

LONGITUDE (WGS 1984): -104.87273

CASING ELEVATION (FT. AMSL): 4972.345

GROUND ELEVATION (FT. AMSL): 4972.615



Drilling / Sample Method:

Macro-Core
Expendable Well Tip
Hydrovac
Hand Auger

Laboratory Sample Types:

Geotechnical Lab
Analytical Chemistry Lab
Geotechnical & Analytical Chemistry Lab



6899 Pecos Street, Unit C
Denver, Colorado 80221

CLIENT: Kerr-McGee Oil & Gas Onshore LP

LOGGED BY: Brandon LeVasseur

PROJECT MANAGER: Robert Cornez

DRILLING CONTRACTOR: Tasman Geosciences, Inc.

DRILLING EQUIPMENT: AMS Powerprobe 9300-SK

DRILL BIT SIZE (INCHES): 2.375"

DATE STARTED - COMPLETED: 4/1/2015

TOTAL WELL DEPTH (FT. BGS): 19

DEPTH TO WATER (FT. BGS): 10.37 (4/14/2015) ▼

Coughlin Red VV 22-1, 22-2
Production Facility

BORING / WELL ID: BH05 (Destroyed)

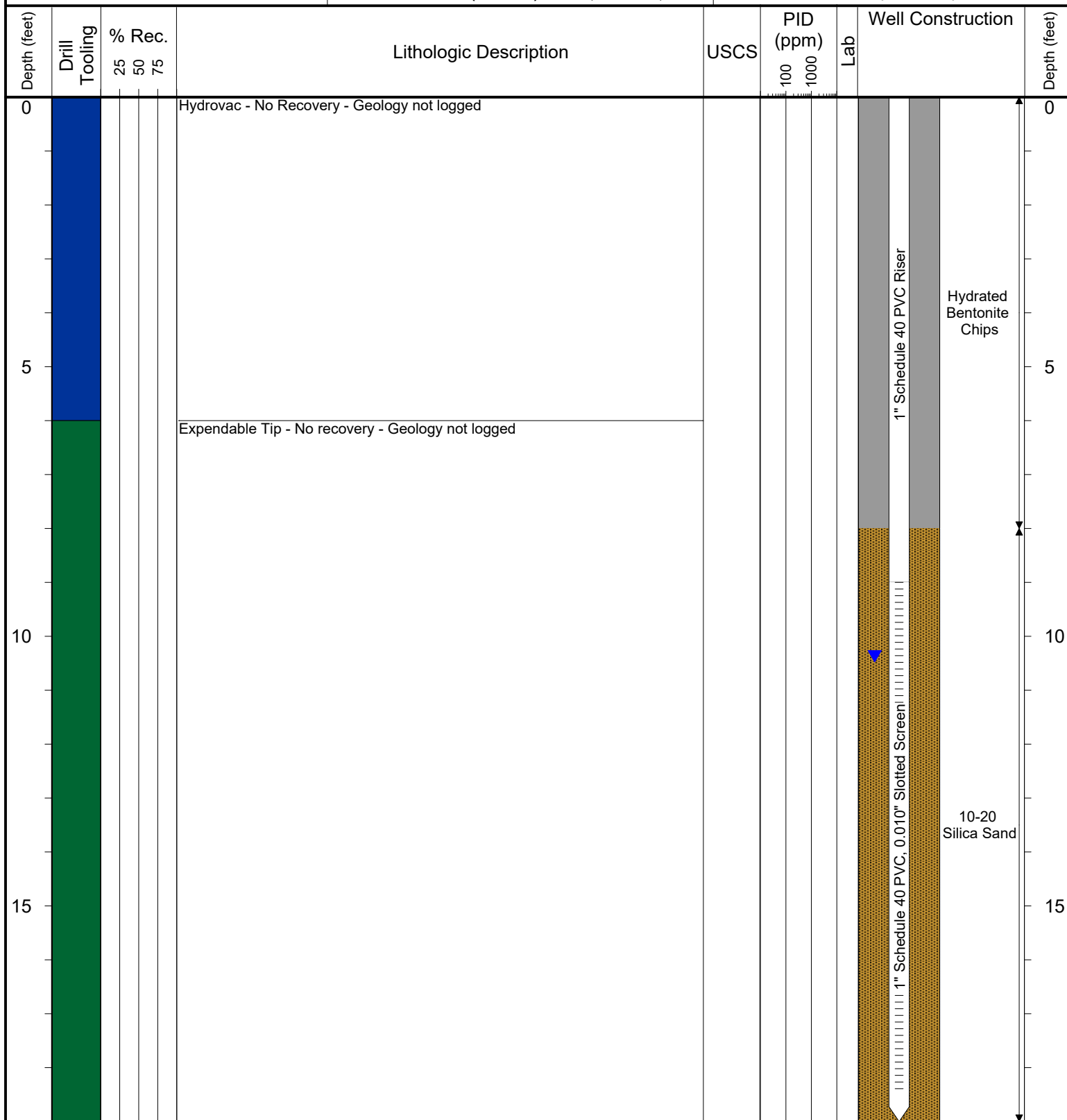
SURFACE COMPLETION: Flush Mount

LATITUDE (WGS 1984): 40.0400209

LONGITUDE (WGS 1984): -104.872871

CASING ELEVATION (FT. AMSL): 4971.955

GROUND ELEVATION (FT. AMSL): 4972.085



Drilling / Sample Method:

Macro-Core

Hydrovac

Expendable Well Tip

Hand Auger

Laboratory Sample Types:

Geotechnical Lab

Analytical Chemistry Lab

Geotechnical & Analytical Chemistry Lab



6899 Pecos Street, Unit C
Denver, Colorado 80221

CLIENT: Kerr-McGee Oil & Gas Onshore LP

LOGGED BY: Brandon LeVasseur

PROJECT MANAGER: Robert Cornez

DRILLING CONTRACTOR: Tasman Geosciences, Inc.

DRILLING EQUIPMENT: AMS Powerprobe 9300-SK

DRILL BIT SIZE (INCHES): 2.375"

DATE STARTED - COMPLETED: 10/12/2015

TOTAL WELL DEPTH (FT. BGS): 15

DEPTH TO WATER (FT. BGS): 7.36 (10/26/2015) ▼

Coughlin Red VV 22-1, 22-2
Production Facility

BORING / WELL ID: BH06 (Destroyed)

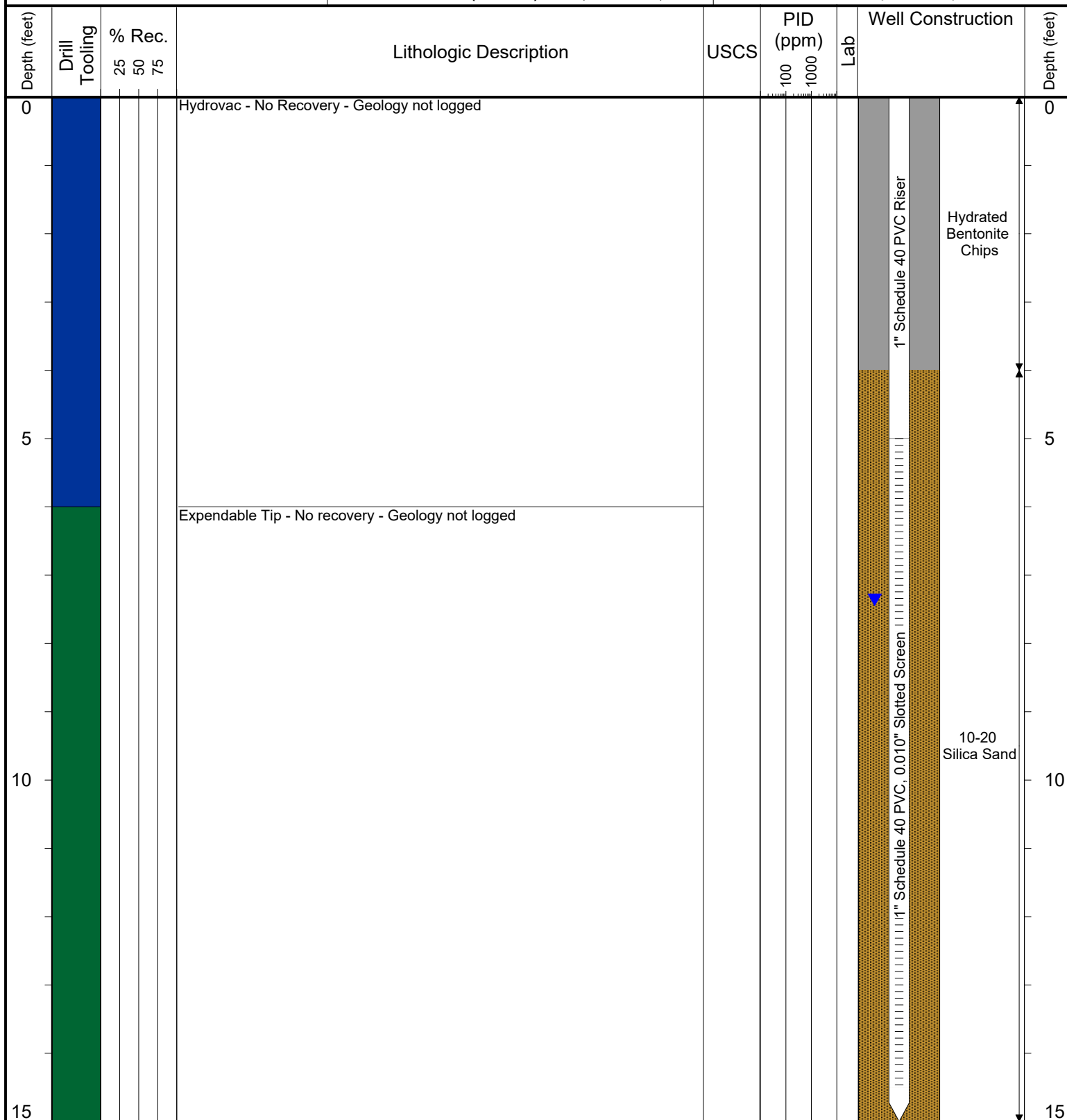
SURFACE COMPLETION: Flush Mount

LATITUDE (WGS 1984): 40.03997467

LONGITUDE (WGS 1984): -104.8726805

CASING ELEVATION (FT. AMSL): 4971.935

GROUND ELEVATION (FT. AMSL): 4972.345



Drilling / Sample Method:

Macro-Core

Hydrovac

Expendable Well Tip

Hand Auger

Laboratory Sample Types:

Geotechnical Lab

Analytical Chemistry Lab

Geotechnical & Analytical Chemistry Lab



6899 Pecos Street, Unit C
Denver, Colorado 80221

CLIENT: Kerr-McGee Oil & Gas Onshore LP

LOGGED BY: Brandon LeVasseur

PROJECT MANAGER: Robert Cornez

DRILLING CONTRACTOR: Tasman Geosciences, Inc.

DRILLING EQUIPMENT: AMS Powerprobe 9300-SK

DRILL BIT SIZE (INCHES): 2.375"

DATE STARTED - COMPLETED: 10/12/2015

TOTAL WELL DEPTH (FT. BGS): 15

DEPTH TO WATER (FT. BGS): 7.43 (10/26/2015) ▼

Coughlin Red VV 22-1, 22-2
Production Facility

BORING / WELL ID: BH07 (Destroyed)

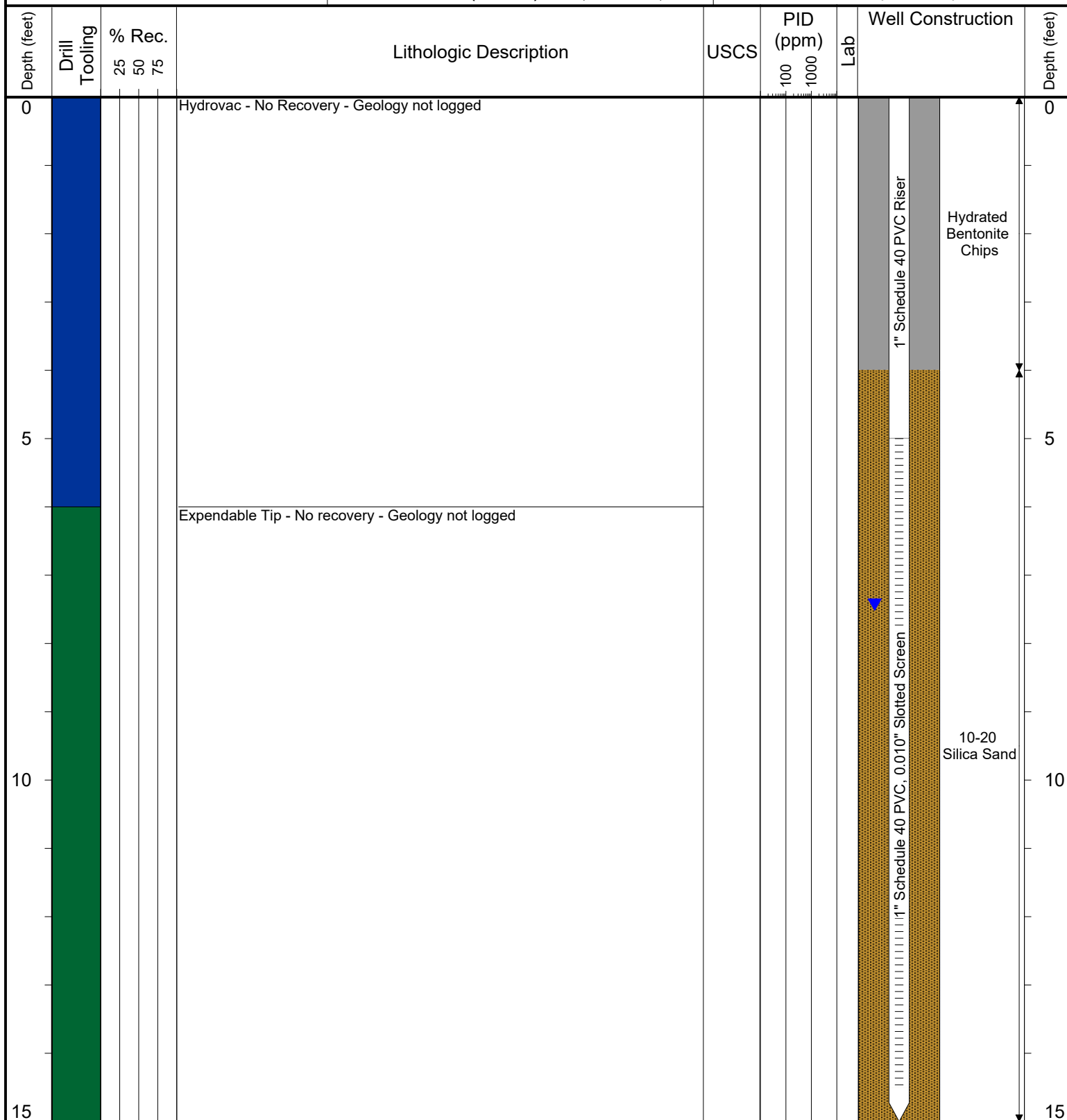
SURFACE COMPLETION: Flush Mount

LATITUDE (WGS 1984): 40.03986242

LONGITUDE (WGS 1984): -104.8728673

CASING ELEVATION (FT. AMSL): 4972.095

GROUND ELEVATION (FT. AMSL): 4972.295



Drilling / Sample Method:

Macro-Core

Hydrovac

Expendable Well Tip

Hand Auger

Laboratory Sample Types:

Geotechnical Lab

Analytical Chemistry Lab

Geotechnical & Analytical Chemistry Lab



6899 Pecos Street, Unit C
Denver, Colorado 80221

CLIENT: Kerr-McGee Oil & Gas Onshore LP

LOGGED BY: Brandon LeVasseur

PROJECT MANAGER: Robert Cornez

DRILLING CONTRACTOR: Tasman Geosciences, Inc.

DRILLING EQUIPMENT: AMS Powerprobe 9300-SK

DRILL BIT SIZE (INCHES): 2.375"

DATE STARTED - COMPLETED: 3/12/2019

TOTAL WELL DEPTH (FT. BGS): 20

DEPTH TO WATER (FT. BGS): 12.45 (3/28/2019) ▼

**Coughlin Red VV 22-1, 22-2
Production Facility**

BORING / WELL ID: BH08

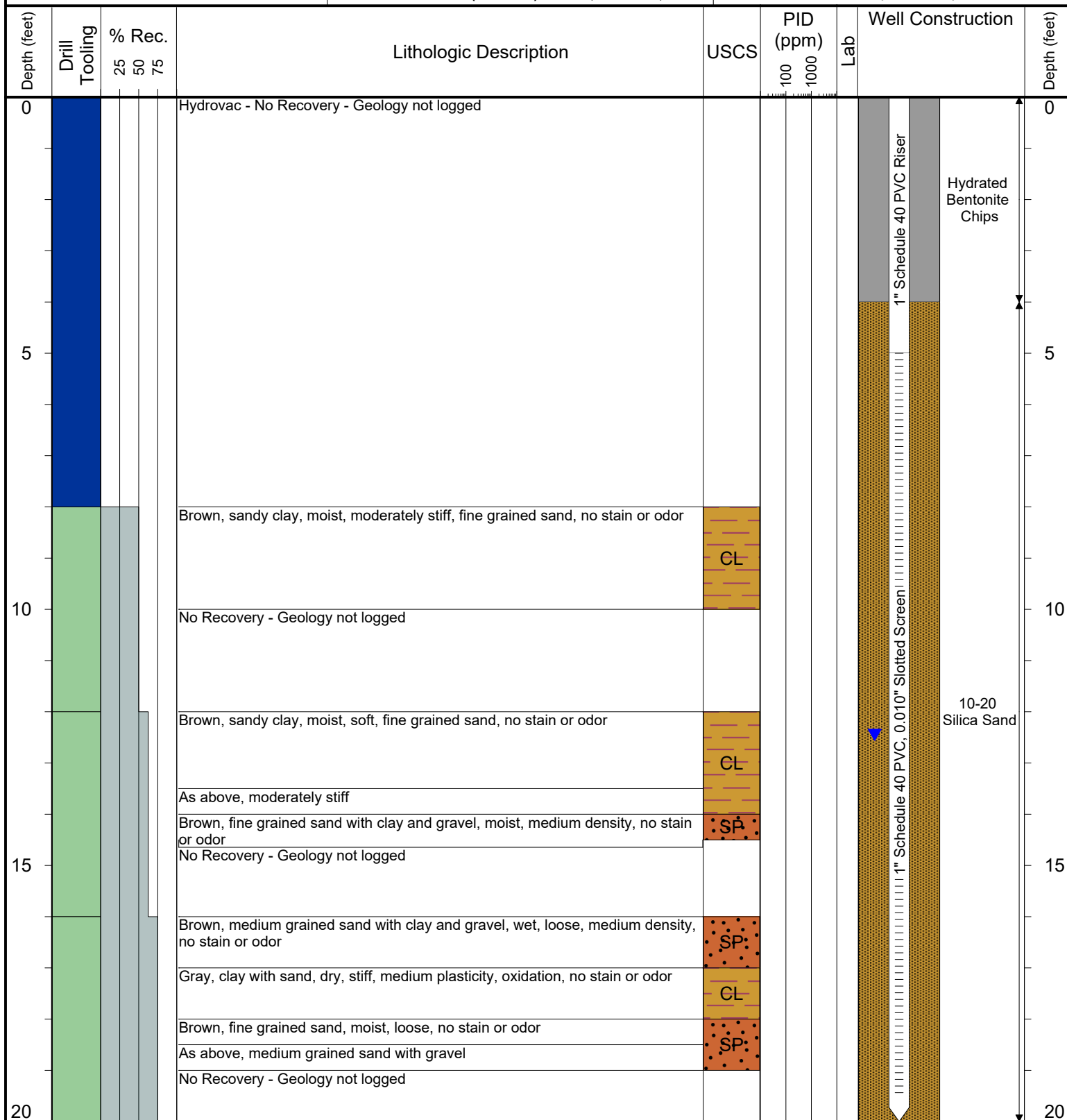
SURFACE COMPLETION: Flush Mount

LATITUDE (WGS 1984): 40.039741807593

LONGITUDE (WGS 1984): -104.87273371072

CASING ELEVATION (FT. AMSL): 4972.35

GROUND ELEVATION (FT. AMSL): 4972.61



Drilling / Sample Method:

Macro-Core
Expendable Well Tip

Hydrovac
Hand Auger

Laboratory Sample Types:

Geotechnical Lab
Analytical Chemistry Lab

Geotechnical & Analytical Chemistry Lab



6899 Pecos Street, Unit C
Denver, Colorado 80221

CLIENT: Kerr-McGee Oil & Gas Onshore LP

LOGGED BY: Brandon LeVasseur

PROJECT MANAGER: Robert Cornez

DRILLING CONTRACTOR: Tasman Geosciences, Inc.

DRILLING EQUIPMENT: AMS Powerprobe 9300-SK

DRILL BIT SIZE (INCHES): 2.375"

DATE STARTED - COMPLETED: 3/12/2019

TOTAL WELL DEPTH (FT. BGS): 20

DEPTH TO WATER (FT. BGS): 12.33 (3/28/2019) ▼

**Coughlin Red VV 22-1, 22-2
Production Facility**

BORING / WELL ID: BH09

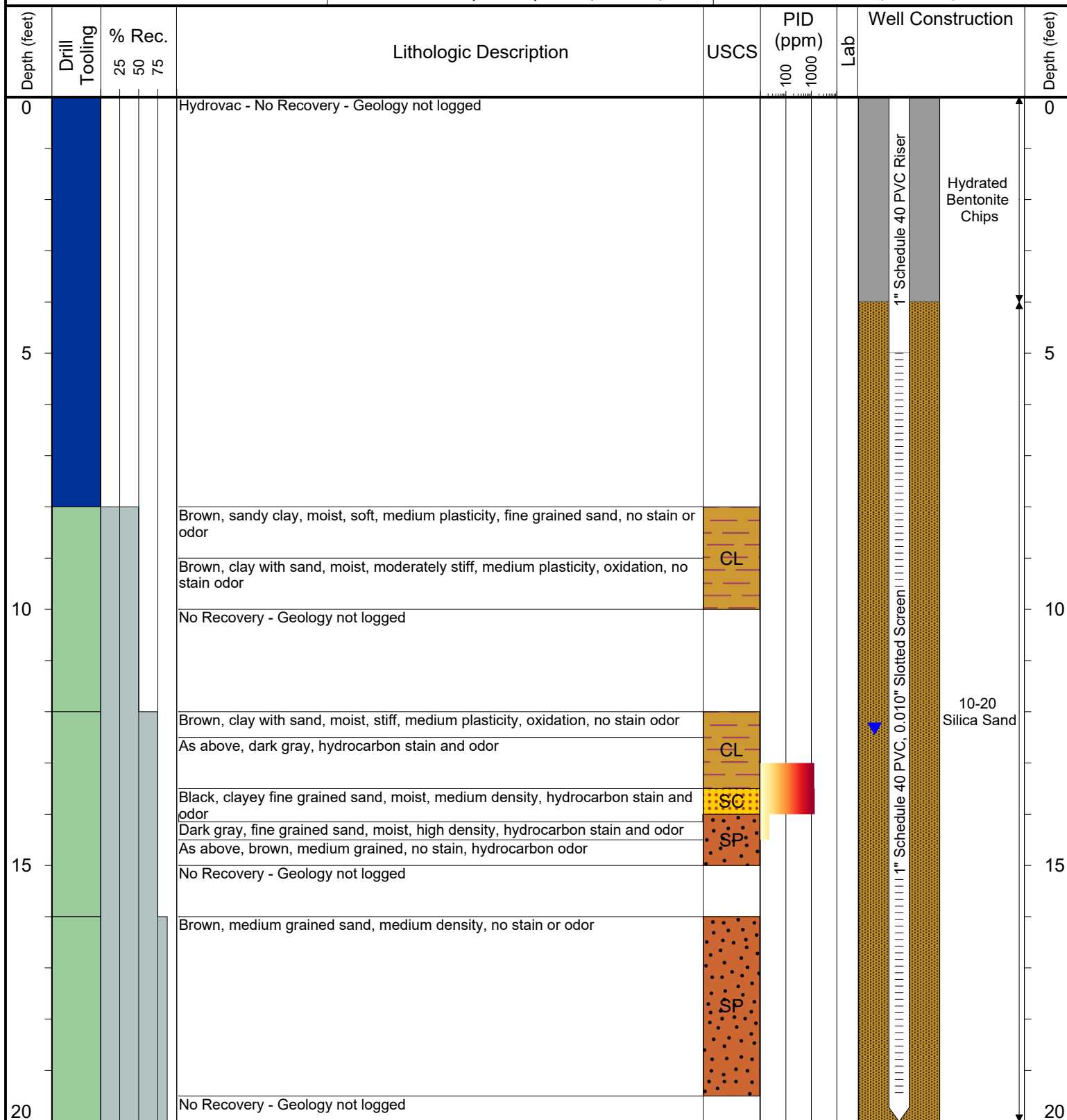
SURFACE COMPLETION: Flush Mount

LATITUDE (WGS 1984): 40.039858306172

LONGITUDE (WGS 1984): -104.87258352419

CASING ELEVATION (FT. AMSL): 4972.23

GROUND ELEVATION (FT. AMSL): 4972.55



Drilling / Sample Method:

Macro-Core

Expendable Well Tip

Hydrovac

Hand Auger

Laboratory Sample Types:

Geotechnical Lab

Analytical Chemistry Lab

Geotechnical & Analytical Chemistry Lab



6899 Pecos Street, Unit C
Denver, Colorado 80221

CLIENT: Kerr-McGee Oil & Gas Onshore LP

LOGGED BY: Brandon LeVasseur

PROJECT MANAGER: Robert Cornez

DRILLING CONTRACTOR: Tasman Geosciences, Inc.

DRILLING EQUIPMENT: AMS Powerprobe 9300-SK

DRILL BIT SIZE (INCHES): 2.375"

DATE STARTED - COMPLETED: 3/12/2019

TOTAL WELL DEPTH (FT. BGS): 20

DEPTH TO WATER (FT. BGS): 11.73 (3/28/2019) ▼

**Coughlin Red VV 22-1, 22-2
Production Facility**

BORING / WELL ID: BH10

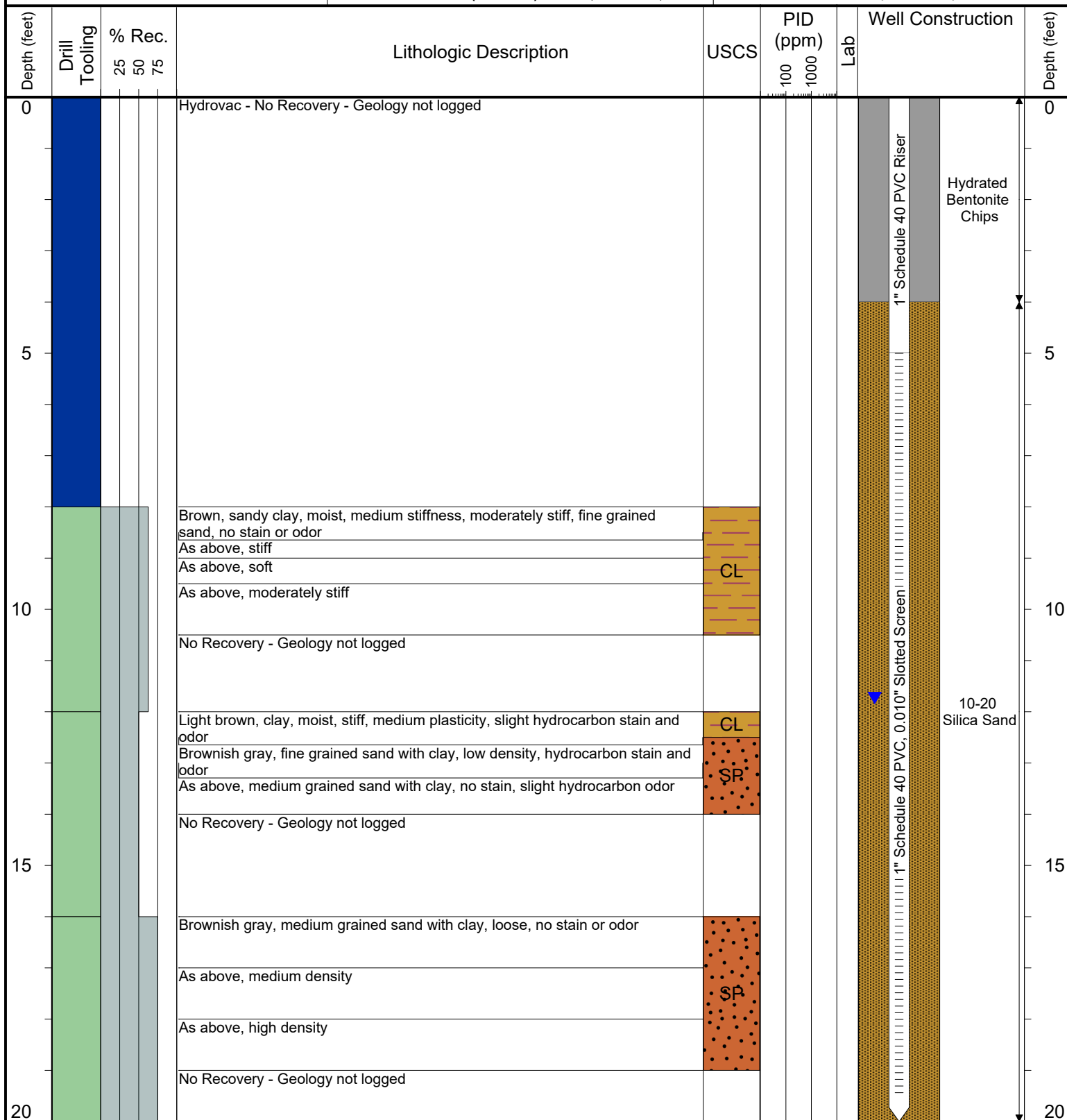
SURFACE COMPLETION: Flush Mount

LATITUDE (WGS 1984): 40.040106187742

LONGITUDE (WGS 1984): -104.87279272646

CASING ELEVATION (FT. AMSL): 4972.35

GROUND ELEVATION (FT. AMSL): 4972.65



Drilling / Sample Method:

Macro-Core Hydrovac
Expendable Well Tip Hand Auger

Laboratory Sample Types:

Geotechnical Lab Geotechnical & Analytical Chemistry Lab
Analytical Chemistry Lab



6899 Pecos Street, Unit C
Denver, Colorado 80221

CLIENT: Kerr-McGee Oil & Gas Onshore LP

LOGGED BY: Brandon LeVasseur

PROJECT MANAGER: Robert Cornez

DRILLING CONTRACTOR: Tasman Geosciences, Inc.

DRILLING EQUIPMENT: AMS Powerprobe 9300-SK

DRILL BIT SIZE (INCHES): 2.375"

DATE STARTED - COMPLETED: 3/12/2019

TOTAL WELL DEPTH (FT. BGS): 20

DEPTH TO WATER (FT. BGS): 11.93 (3/28/2019) ▼

Coughlin Red VV 22-1, 22-2
Production Facility

BORING / WELL ID: BH11

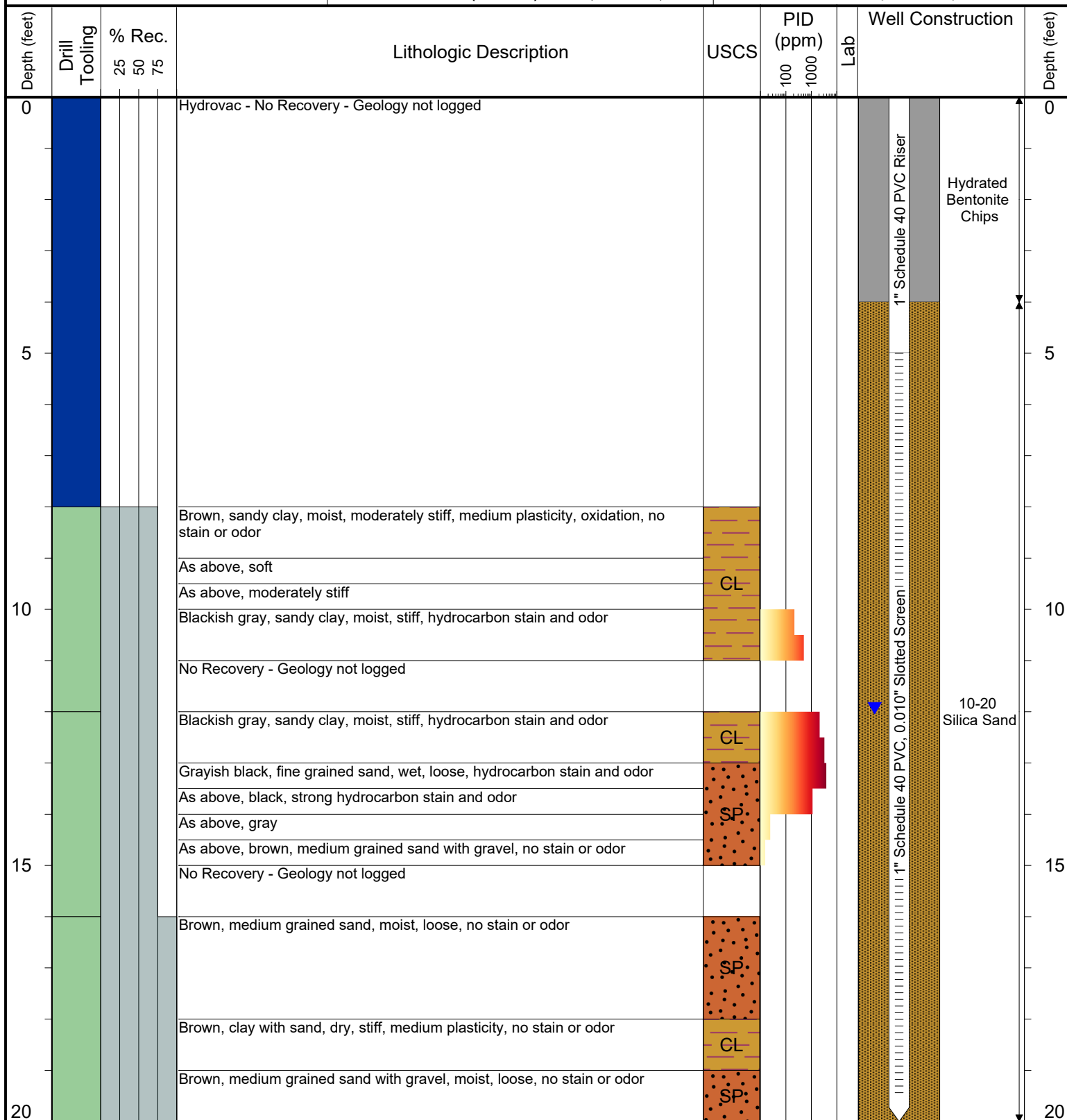
SURFACE COMPLETION: Flush Mount

LATITUDE (WGS 1984): 40.040059345128

LONGITUDE (WGS 1984): -104.87254307811

CASING ELEVATION (FT. AMSL): 4972.1

GROUND ELEVATION (FT. AMSL): 4972.42



Drilling / Sample Method:

Macro-Core
Expendable Well Tip
Hydrovac
Hand Auger

Laboratory Sample Types:

Geotechnical Lab
Analytical Chemistry Lab
Geotechnical & Analytical Chemistry Lab