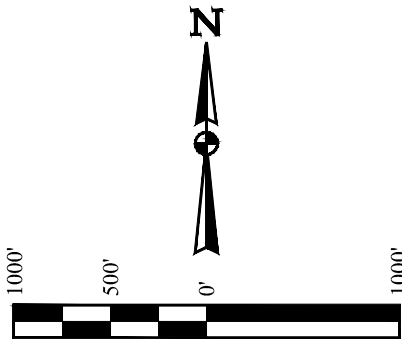


T4S, R65W, 6th P.M.

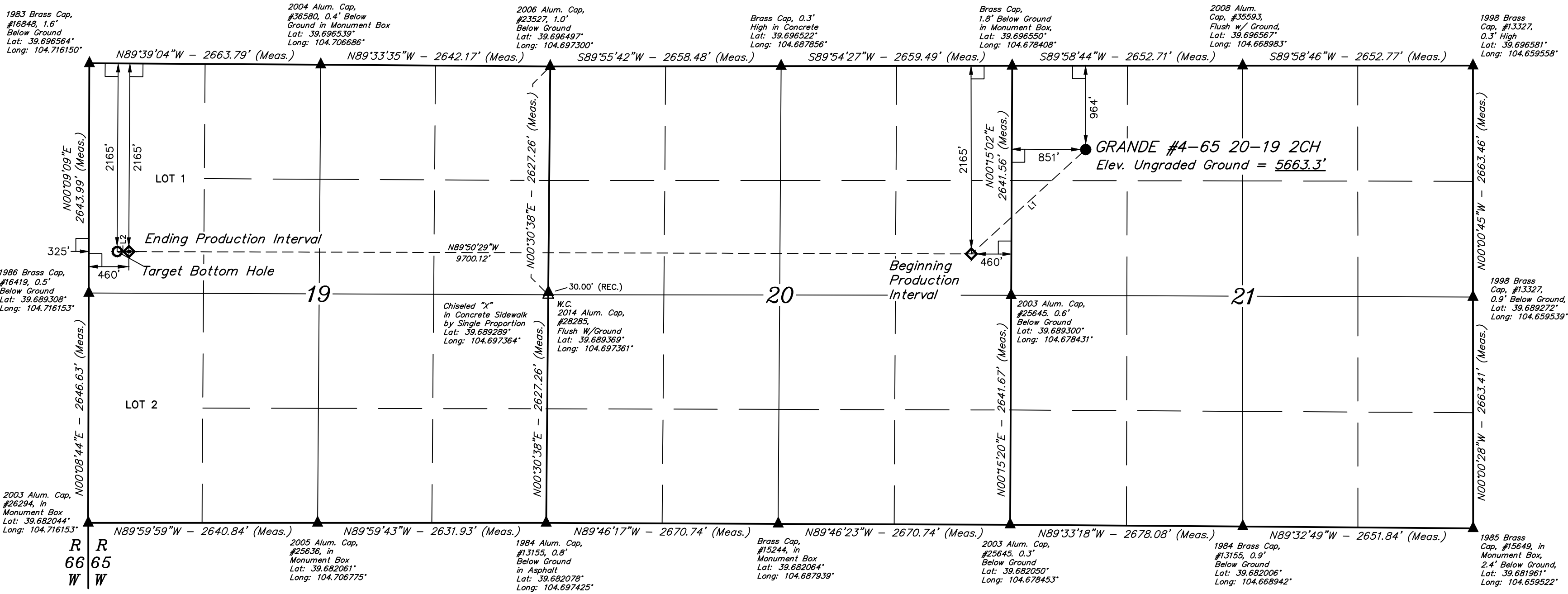
ConocoPhillips Company

GRANDE #4-65 20-19 2CH
NW 1/4 NW 1/4, SECTION 21, T4S, R65W, 6th P.M.,
ARAPAHOE COUNTY, COLORADO

BASIS OF BEARINGS
BASIS OF ELEVATION
BENCHMARK 374 LOCATED ON THE SECTION LINE BETWEEN
SECTIONS 12 & 13, T5S, R64W, 6th P.M., TAKEN FROM 1988
PUBLISHED DATUM BY THE UNITED STATES DEPARTMENT OF
THE INTERIOR, GEOLOGICAL SURVEY AS BEING 6054.61 FEET.



LINE TABLE		
LINE	DIRECTION	LENGTH
L1	S47°35'19"W	1782.31'
L2	N89°39'04"W	135.00'



- LEGEND:
- = 90° SYMBOL
 - = PROPOSED WELLHEAD.
 - ◆ = PRODUCTION INTERVAL.
 - = TARGET BOTTOM HOLE.
 - ▲ = SECTION CORNERS LOCATED. (NAD 83)
 - △ = SECTION CORNERS RE-ESTABLISHED. (Not Set on Ground.) (NAD 83)

PDOP = 1.8

REV: 1 09-11-18 D.J.W. (SHL RE-ORDER)

NAD 83 (SURFACE LOCATION)	NAD 83 (BEG. PROD. INTERVAL)	NAD 83 (ENDING PROD. INTERVAL)	NAD 83 (TARGET BOTTOM HOLE)
LATITUDE = 39°41'38.07" (39.693909)	LATITUDE = 39°41'26.17" (39.690603)	LATITUDE = 39°41'26.23" (39.690619)	LATITUDE = 39°41'26.23" (39.690620)
LONGITUDE = 104°40'31.42" (104.675393)	LONGITUDE = 104°40'48.21" (104.680060)	LONGITUDE = 104°42'52.26" (104.714518)	LONGITUDE = 104°42'53.99" (104.714997)
NAD 27 (SURFACE LOCATION)	NAD 27 (BEG. PROD. INTERVAL)	NAD 27 (ENDING PROD. INTERVAL)	NAD 27 (TARGET BOTTOM HOLE)
LATITUDE = 39°41'38.12" (39.693922)	LATITUDE = 39°41'26.22" (39.690615)	LATITUDE = 39°41'26.27" (39.690631)	LATITUDE = 39°41'26.28" (39.690632)
LONGITUDE = 104°40'29.53" (104.674868)	LONGITUDE = 104°40'46.32" (104.679534)	LATITUDE = 104°42'50.37" (104.713991)	LONGITUDE = 104°42'52.10" (104.714471)
STATE PLANE NAD 83 (CO. CEN.)	STATE PLANE NAD 83 (CO. CEN.)	STATE PLANE NAD 83 (CO. CEN.)	STATE PLANE NAD 83 (CO. CEN.)
N: 1678688.48 E: 3232046.89	N: 1677472.35 E: 3230744.66	N: 1677392.43 E: 3221047.74	N: 1677391.77 E: 3220912.78
STATE PLANE NAD 27 (CO. CEN.)	STATE PLANE NAD 27 (CO. CEN.)	STATE PLANE NAD 27 (CO. CEN.)	STATE PLANE NAD 27 (CO. CEN.)
N: 678680.82 E: 2232200.68	N: 677464.68 E: 2230898.48	N: 677384.61 E: 2221201.64	N: 677383.94 E: 2221066.68

CERTIFICATE OF RECORDING
THIS IS TO CERTIFY THAT THE ABOVE DESCRIBED SURVEY AND
NOTES OF ACTUAL SURVEYS MADE BY ME OR UNDER MY SUPERVISION
AND THAT THE SAME ARE TRUE AND CORRECT TO THE BEST OF MY
KNOWLEDGE AND BELIEF.

REGISTERED LAND SURVEYOR
REGISTRATION NO. 28285
STATE OF COLORADO
J. WALLACE
09-11-18



UELS, LLC
Corporate Office * 85 South 200 East
Vernal, UT 84078 * (435) 789-1017

SURVEYED BY CHAD MEIERS, O.R. 08-24-18 SCALE
DRAWN BY C.C. 08-30-18 1" = 1000'

WELL LOCATION PLAT