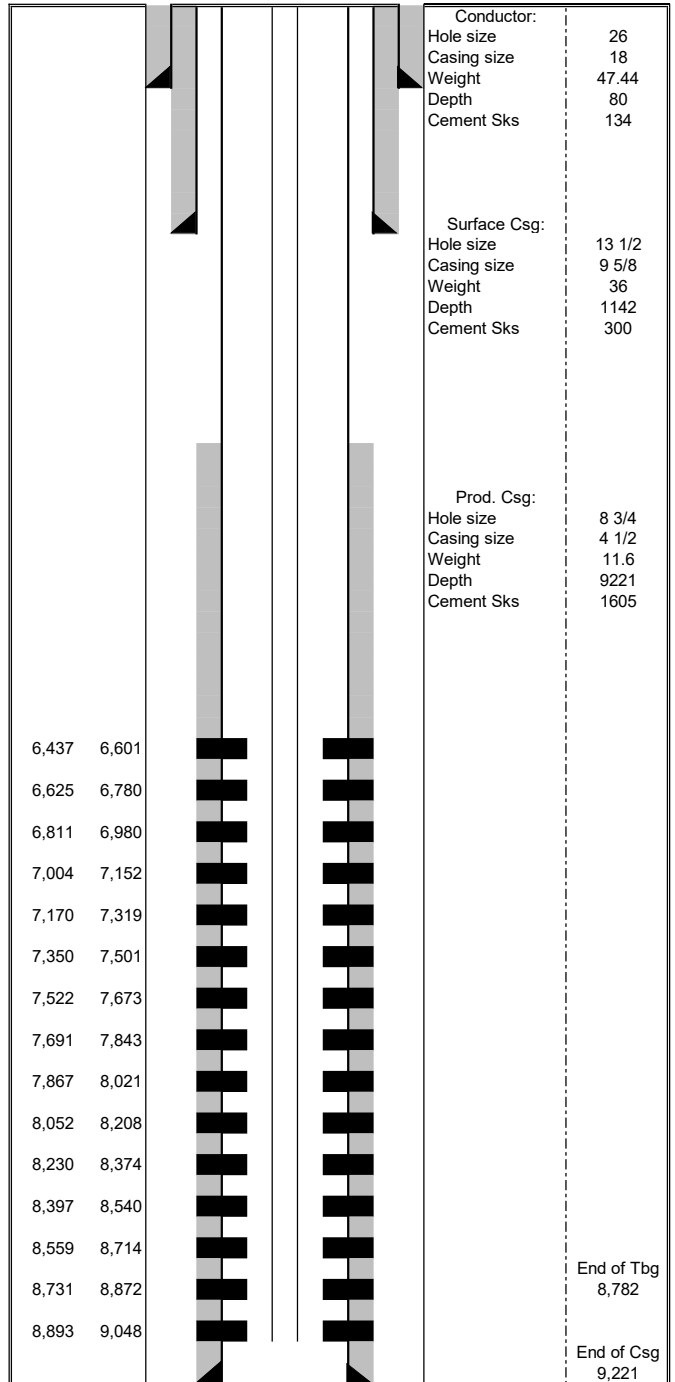


Federal RWF 514-8 Wellbore Diagram

Well	Pad	API	
Federal RWF 514-8	Doe 1-M-18	05-045-24034	
Diagram Date	Spud Date	First Production Date	
11/25/2019	7/15/2019	11/18/2019	
Location	Meridian	County	
Lot 4 Sec 17	6th	Garfield	
Top Perf	Bottom Perf	Current EOT	
6,437	9,048	8,782	
Bottom Surf Csg	Bottom Prod Csg	TOC	
1,142	9,221	854	
TD	TVD	Elevation	
9,231	8,983	6,175	
PBTD	PBTVD	KB	
9,192	8,944	6,199	

Formation Tops	
Wasatch G	2,848
Wasatch	4,747
Mesaverde	5,443
Ohio Creek	5,443
Williams Fork	5,535
Cameo	8,236
Rollins	9,118



Conductor:	
Hole size	26
Casing size	18
Weight	47.44
Depth	80
Cement Sks	134

Surface Csg:	
Hole size	13 1/2
Casing size	9 5/8
Weight	36
Depth	1142
Cement Sks	300

Prod. Csg:	
Hole size	8 3/4
Casing size	4 1/2
Weight	11.6
Depth	9221
Cement Sks	1605

6,437 6,601
 6,625 6,780
 6,811 6,980
 7,004 7,152
 7,170 7,319
 7,350 7,501
 7,522 7,673
 7,691 7,843
 7,867 8,021
 8,052 8,208
 8,230 8,374
 8,397 8,540
 8,559 8,714
 8,731 8,872
 8,893 9,048

End of Tbg
8,782

 End of Csg
9,221