

Inspection Photos

Location Name: COUNTRYMAN 24-31

API#: 05-071-09404

INSP. #: 695101824



PHOTO 1: LOCATION



PHOTO 2: WELL SIGN



Inspection Photos
Location Name: COUNTRYMAN 24-31
API#: 05-071-09404
INSP. #: 695101824



PHOTO 3: AREA OF IMPACTED SOIL NEAR PRIME MOVER (ENGINE SKID)
MOTOR ON ENGINE SKID HAS OIL LEAKS IN NUMEROUS PLACES. **Remove and dispose impacted material in approved manner, service and maintain equipment and self inspect to prevent recurrence of conditions per 1002.f(2) and 907. Increase frequency of maintenance and self inspection schedule of equipment to prevent impacting surface materials and mixing of wastes with precipitation. Rule 907 & 1002.f.(2). CA DATE 12-25-19.**



PHOTO 4: ANOTHER AREA OF IMPACTED SOIL AROUND COMPRESSOR. SAME CA AS PHOTO 3.

Inspection Photos
Location Name: COUNTRYMAN 24-31
API#: 05-071-09404
INSP. #: 695101824



PHOTO 5: ANOTHER AREA OF IMPACTED SOIL AROUND WELLHEAD.
SAME CA AS PHOTO 3.

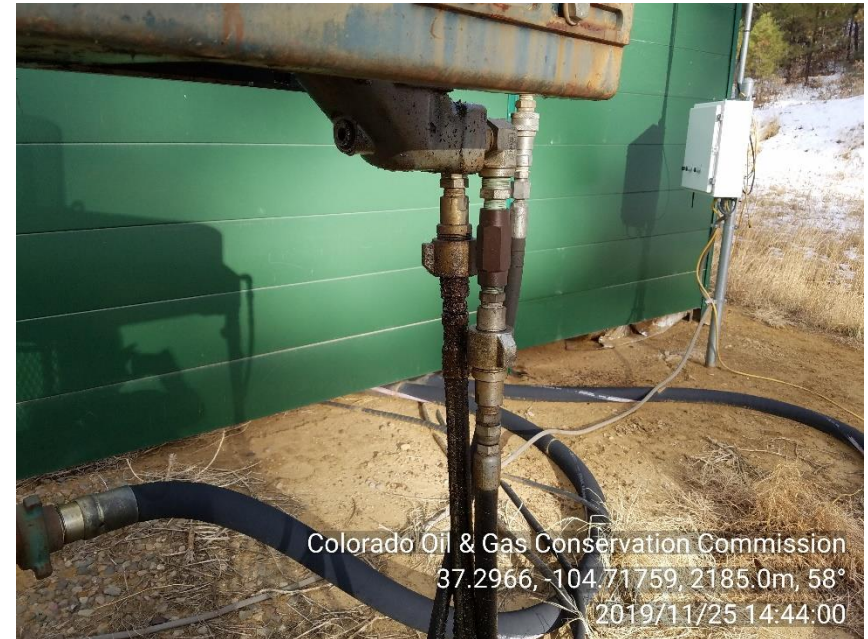


PHOTO 6: MECHANICAL CONDITION. HYDRAULIC HOSE
LEAKING AT CONNECTIONS. **Increase frequency of
maintenance and self inspection schedule of equipment to
prevent impacting surface materials and mixing of wastes
with precipitation. Rule 907 & 1002.f.(2). CA DATE 12-25-19.**