

NOBLE ENERGY, INC

Location: COLORADO Slot: SLOT#33 WELLS RANCH STATE BB03-676 (1290'FNL & 1000'FWL,SEC.03)
Field: WELD COUNTY (NOBLE NAD 83 GRID) Well: WELLS RANCH STATE BB03-676
Facility: SEC.03-T05N-R63W Wellbore: WELLS RANCH STATE BB03-676 PWB

Plot reference wellpath is WELLS RANCH STATE BB03-676 (REV-E-D) PWB
True vertical depths are referenced to RIG (30) (RKB)
Measured depths are referenced to RIG (30) (RKB)
RIG (30) (RKB) to Mean Sea Level: 4780 feet
Mean Sea Level to Ground level (At Slot: SLOT#33 WELLS RANCH STATE BB03-676 (1290'FNL & 1000'FWL,SEC.03)): 0 feet
Coordinates are in feet referenced to Slot

Grid System: NAD83 / Lambert Colorado SP, Northern Zone (501), US feet
North Reference: Grid north
Scale: True distance
Depths are in feet
Created by: doddanna on 2019-10-02
Database: WellArchitectDB2



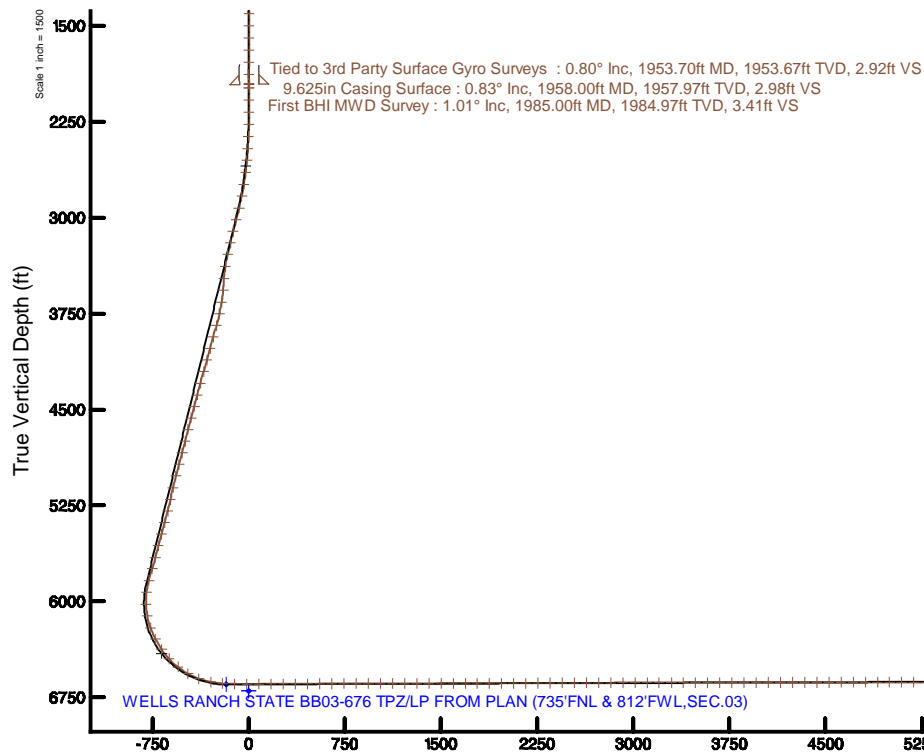
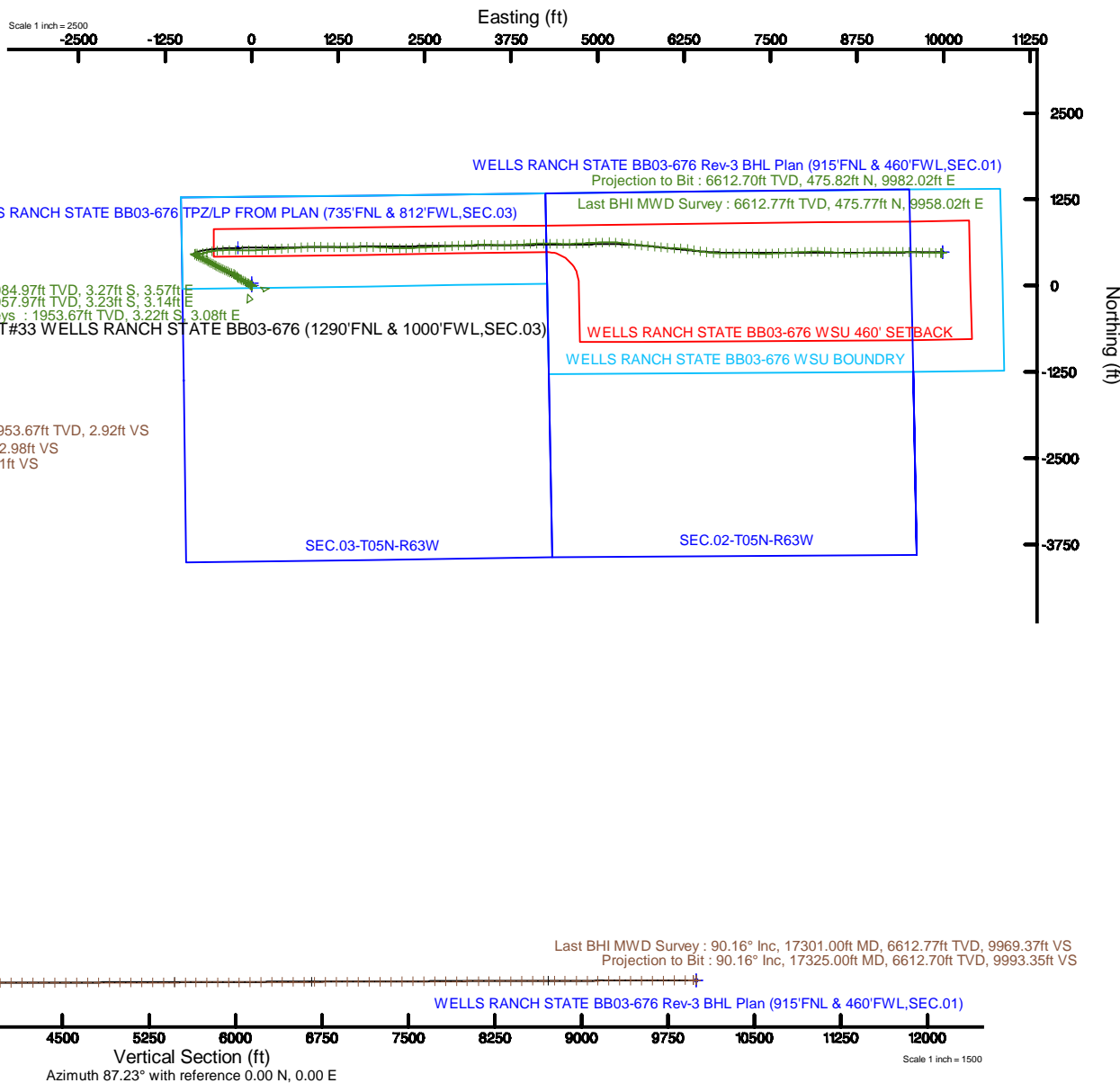
Location Information

| Facility Name | | Grid East (US Feet) | Grid North (US Feet) | Latitude | Longitude | |
|---|----------------|---------------------|----------------------|----------------------|----------------|----------------|
| SEC.03-T05N-R63W | | 888881.141 | 948881.330 | 40°20'01.387N | 104°20'46.322W | |
| Site | Local N (Feet) | Local E (Feet) | Grid East (US Feet) | Grid North (US Feet) | Latitude | Longitude |
| SLOT#33 WELLS RANCH STATE BB03-676 (1290'FNL & 1000'FWL,SEC.03) | 075.15 | 214.00 | 888881.141 | 948881.330 | 40°20'01.387N | 104°20'46.322W |
| RIG (30) (RKB) to Ground level (At Slot: SLOT#33 WELLS RANCH STATE BB03-676 (1290'FNL & 1000'FWL,SEC.03)) | | | | | | 4780 |
| Mean Sea Level to Ground level (At Slot: SLOT#33 WELLS RANCH STATE BB03-676 (1290'FNL & 1000'FWL,SEC.03)) | | | | | | 0 |
| RIG (30) (RKB) to Mean Sea Level | | | | | | 4780 |

Survey Program

| Start MD (ft) | End MD (ft) | Tool | Model | Log Name/Comment | Wellbore |
|---------------|-------------|---------------|--|------------------|--------------------------------|
| 30.00 | 17340.91 | OWSG MWD Rev2 | OWSG MWD Rev2 + PPR + Multi-Station Correction | | WELLS RANCH STATE BB03-676 PWB |

BAKER
HUGHES
a GE company





Actual Wellpath Report

WELLS RANCH STATE BB03-676 AWP

Page 1 of 10



REFERENCE WELLPATH IDENTIFICATION

| | | | |
|----------|---------------------------------|----------|---|
| Operator | NOBLE ENERGY, INC | Slot | SLOT#33 WELLS RANCH STATE BB03-676 (1290'FNL & 1000'FWL,SEC.03) |
| Area | COLORADO | Well | WELLS RANCH STATE BB03-676 |
| Field | WELD COUNTY (NOBLE NAD 83 GRID) | Wellbore | WELLS RANCH STATE BB03-676 AWP |
| Facility | SEC.03-T05N-R63W | | |

REPORT SETUP INFORMATION

| | | | |
|---------------------|---|----------------------|---|
| Projection System | NAD83 / Lambert Colorado SP, Northern Zone (501), US feet | Software System | WellArchitect® 5.1 |
| North Reference | Grid | User | Doddanna |
| Scale | 0.999962 | Report Generated | 10/2/2019 at 1:21:25 PM |
| Convergence at slot | 0.69° East | Database/Source file | WellArchitectDB2/WELLS_RANCH_STATE_BB03-676_AWP.xml |

WELLPATH LOCATION

| | Local coordinates | | Grid coordinates | | Geographic coordinates | |
|-----------------------|-------------------|----------|------------------|-----------------|------------------------|-----------------|
| | North[ft] | East[ft] | Easting[US ft] | Northing[US ft] | Latitude | Longitude |
| Slot Location | -579.13 | 316.02 | 3298147.15 | 1402062.22 | 40°25'55.632"N | 104°25'44.256"W |
| Facility Reference Pt | | | 3297831.14 | 1402641.33 | 40°26'01.392"N | 104°25'48.252"W |
| Field Reference Pt | | | 3000000.00 | 4454105.15 | 48°46'34.315"N | 105°30'00.000"W |

WELLPATH DATUM

| | | | |
|--------------------------|-------------------|---|-------------------|
| Calculation method | Minimum curvature | RIG (30') (RKB) to Facility Vertical Datum | 4780.00ft |
| Horizontal Reference Pt | Slot | RIG (30') (RKB) to Mean Sea Level | 4780.00ft |
| Vertical Reference Pt | RIG (30') (RKB) | RIG (30') (RKB) to Ground Level at Slot (SLOT#33 WELLS RANCH STATE BB03-676 (1290'FNL & 1000'FWL,SEC.03)) | 4780.00ft |
| MD Reference Pt | RIG (30') (RKB) | Section Origin | N 0.00, E 0.00 ft |
| Field Vertical Reference | Mean Sea Level | Section Azimuth | 87.23° |



Actual Wellpath Report

WELLS RANCH STATE BB03-676 AWP

Page 2 of 10



REFERENCE WELLPATH IDENTIFICATION

| | | | |
|----------|---------------------------------|----------|---|
| Operator | NOBLE ENERGY, INC | Slot | SLOT#33 WELLS RANCH STATE BB03-676 (1290'FNL & 1000'FWL,SEC.03) |
| Area | COLORADO | Well | WELLS RANCH STATE BB03-676 |
| Field | WELD COUNTY (NOBLE NAD 83 GRID) | Wellbore | WELLS RANCH STATE BB03-676 AWB |
| Facility | SEC.03-T05N-R63W | | |

WELLPATH DATA (186 stations)

| MD [ft] | Inclination [°] | Azimuth [°] | TVD [ft] | Vert Sect [ft] | North [ft] | East [ft] | Latitude | Longitude | DLS [°/100ft] | Comments |
|------------|--------------------|----------------|-------------|-------------------|---------------|--------------|----------------|-----------------|------------------|--|
| 0.00 | 0.000 | 147.330 | 0.00 | 0.00 | 0.00 | 0.00 | 40°25'55.632"N | 104°25'44.256"W | 0.00 | |
| 85.60 | 0.430 | 147.330 | 85.60 | 0.16 | -0.27 | 0.17 | 40°25'55.629"N | 104°25'44.254"W | 0.50 | |
| 179.40 | 0.270 | 188.790 | 179.40 | 0.29 | -0.79 | 0.33 | 40°25'55.624"N | 104°25'44.252"W | 0.31 | |
| 271.00 | 0.260 | 156.980 | 271.00 | 0.32 | -1.19 | 0.38 | 40°25'55.620"N | 104°25'44.251"W | 0.16 | |
| 365.70 | 0.470 | 174.980 | 365.69 | 0.41 | -1.77 | 0.50 | 40°25'55.614"N | 104°25'44.250"W | 0.25 | |
| 460.30 | 0.420 | 134.900 | 460.29 | 0.66 | -2.41 | 0.78 | 40°25'55.608"N | 104°25'44.246"W | 0.33 | |
| 555.00 | 0.450 | 122.820 | 554.99 | 1.19 | -2.85 | 1.33 | 40°25'55.604"N | 104°25'44.239"W | 0.10 | |
| 649.90 | 0.320 | 103.420 | 649.89 | 1.75 | -3.12 | 1.90 | 40°25'55.601"N | 104°25'44.232"W | 0.19 | |
| 744.50 | 0.020 | 181.370 | 744.49 | 2.00 | -3.19 | 2.16 | 40°25'55.600"N | 104°25'44.229"W | 0.33 | |
| 839.30 | 0.170 | 314.920 | 839.29 | 1.91 | -3.11 | 2.06 | 40°25'55.601"N | 104°25'44.230"W | 0.19 | |
| 933.90 | 0.190 | 358.660 | 933.89 | 1.82 | -2.85 | 1.96 | 40°25'55.604"N | 104°25'44.231"W | 0.14 | |
| 1028.70 | 0.340 | 8.390 | 1028.69 | 1.88 | -2.42 | 2.00 | 40°25'55.608"N | 104°25'44.231"W | 0.16 | |
| 1123.40 | 0.480 | 63.720 | 1123.38 | 2.29 | -1.97 | 2.39 | 40°25'55.612"N | 104°25'44.225"W | 0.42 | |
| 1218.30 | 0.480 | 88.760 | 1218.28 | 3.06 | -1.78 | 3.15 | 40°25'55.614"N | 104°25'44.216"W | 0.22 | |
| 1313.00 | 0.230 | 118.780 | 1312.98 | 3.61 | -1.86 | 3.71 | 40°25'55.613"N | 104°25'44.208"W | 0.32 | |
| 1407.70 | 0.170 | 146.260 | 1407.68 | 3.85 | -2.07 | 3.95 | 40°25'55.611"N | 104°25'44.205"W | 0.12 | |
| 1502.30 | 0.350 | 204.860 | 1502.28 | 3.79 | -2.45 | 3.91 | 40°25'55.607"N | 104°25'44.206"W | 0.32 | |
| 1596.80 | 0.210 | 279.500 | 1596.78 | 3.48 | -2.68 | 3.62 | 40°25'55.605"N | 104°25'44.210"W | 0.38 | |
| 1691.30 | 0.130 | 297.740 | 1691.28 | 3.22 | -2.61 | 3.35 | 40°25'55.606"N | 104°25'44.213"W | 0.10 | |
| 1785.90 | 0.460 | 238.990 | 1785.87 | 2.80 | -2.75 | 2.93 | 40°25'55.604"N | 104°25'44.219"W | 0.43 | |
| 1880.50 | 0.100 | 188.000 | 1880.47 | 2.45 | -3.03 | 2.60 | 40°25'55.602"N | 104°25'44.223"W | 0.43 | |
| 1953.70 | 0.800 | 104.150 | 1953.67 | 2.92 | -3.22 | 3.08 | 40°25'55.600"N | 104°25'44.217"W | 1.09 | Tied to 3rd Party Surface Gyro Surveys |
| 1985.00 | 1.010 | 90.290 | 1984.97 | 3.41 | -3.27 | 3.57 | 40°25'55.599"N | 104°25'44.210"W | 0.96 | First BHI MWD Survey |
| 2080.00 | 0.110 | 8.400 | 2079.96 | 4.26 | -3.19 | 4.42 | 40°25'55.600"N | 104°25'44.199"W | 1.05 | |
| 2175.00 | 0.100 | 57.680 | 2174.96 | 4.35 | -3.05 | 4.50 | 40°25'55.601"N | 104°25'44.198"W | 0.09 | |
| 2270.00 | 1.480 | 276.780 | 2269.95 | 3.21 | -2.86 | 3.36 | 40°25'55.603"N | 104°25'44.213"W | 1.64 | |
| 2365.00 | 3.830 | 305.110 | 2364.85 | -0.50 | -0.89 | -0.46 | 40°25'55.623"N | 104°25'44.262"W | 2.76 | |
| 2459.00 | 5.010 | 310.390 | 2458.56 | -5.97 | 3.57 | -6.15 | 40°25'55.668"N | 104°25'44.335"W | 1.33 | |
| 2554.00 | 7.010 | 311.680 | 2553.04 | -13.14 | 10.12 | -13.64 | 40°25'55.734"N | 104°25'44.431"W | 2.11 | |
| 2649.00 | 9.490 | 308.510 | 2647.05 | -23.16 | 18.85 | -24.10 | 40°25'55.821"N | 104°25'44.565"W | 2.65 | |



Actual Wellpath Report

WELLS RANCH STATE BB03-676 AWP

Page 3 of 10



REFERENCE WELLPATH IDENTIFICATION

| | | | |
|----------|---------------------------------|----------|---|
| Operator | NOBLE ENERGY, INC | Slot | SLOT#33 WELLS RANCH STATE BB03-676 (1290'FNL & 1000'FWL,SEC.03) |
| Area | COLORADO | Well | WELLS RANCH STATE BB03-676 |
| Field | WELD COUNTY (NOBLE NAD 83 GRID) | Wellbore | WELLS RANCH STATE BB03-676 AWB |
| Facility | SEC.03-T05N-R63W | | |

WELLPATH DATA (186 stations)

| MD [ft] | Inclination [°] | Azimuth [°] | TVD [ft] | Vert Sect [ft] | North [ft] | East [ft] | Latitude | Longitude | DLS [°/100ft] | Comments |
|------------|--------------------|----------------|-------------|-------------------|---------------|--------------|----------------|-----------------|------------------|----------|
| 2744.00 | 11.610 | 303.720 | 2740.44 | -36.73 | 29.03 | -38.18 | 40°25'55.923"N | 104°25'44.745"W | 2.41 | |
| 2839.00 | 14.150 | 299.290 | 2833.04 | -54.26 | 40.02 | -56.27 | 40°25'56.034"N | 104°25'44.977"W | 2.87 | |
| 2933.00 | 15.810 | 296.410 | 2923.85 | -75.18 | 51.34 | -77.76 | 40°25'56.149"N | 104°25'45.253"W | 1.93 | |
| 3028.00 | 15.830 | 297.510 | 3015.25 | -97.67 | 63.08 | -100.84 | 40°25'56.267"N | 104°25'45.550"W | 0.32 | |
| 3123.00 | 15.720 | 295.680 | 3106.67 | -120.17 | 74.64 | -123.93 | 40°25'56.384"N | 104°25'45.847"W | 0.54 | |
| 3217.00 | 15.070 | 298.610 | 3197.30 | -141.80 | 86.01 | -146.14 | 40°25'56.499"N | 104°25'46.132"W | 1.08 | |
| 3312.00 | 15.630 | 297.960 | 3288.91 | -163.34 | 97.93 | -168.28 | 40°25'56.620"N | 104°25'46.417"W | 0.62 | |
| 3407.00 | 10.000 | 286.720 | 3381.52 | -182.14 | 106.31 | -187.50 | 40°25'56.705"N | 104°25'46.664"W | 6.45 | |
| 3501.00 | 6.990 | 326.990 | 3474.56 | -192.72 | 113.46 | -198.45 | 40°25'56.777"N | 104°25'46.804"W | 6.89 | |
| 3595.00 | 10.850 | 329.890 | 3567.40 | -199.67 | 125.92 | -206.00 | 40°25'56.901"N | 104°25'46.900"W | 4.13 | |
| 3690.00 | 13.770 | 318.080 | 3660.22 | -210.92 | 142.07 | -218.05 | 40°25'57.062"N | 104°25'47.053"W | 4.04 | |
| 3785.00 | 16.700 | 309.650 | 3751.89 | -228.13 | 159.20 | -236.12 | 40°25'57.233"N | 104°25'47.284"W | 3.86 | |
| 3880.00 | 17.110 | 287.310 | 3842.88 | -251.36 | 172.08 | -259.99 | 40°25'57.363"N | 104°25'47.591"W | 6.81 | |
| 3974.00 | 17.080 | 293.050 | 3932.73 | -276.77 | 181.60 | -285.90 | 40°25'57.460"N | 104°25'47.925"W | 1.79 | |
| 4069.00 | 16.990 | 292.770 | 4023.56 | -301.86 | 192.43 | -311.54 | 40°25'57.571"N | 104°25'48.254"W | 0.13 | |
| 4164.00 | 16.940 | 293.590 | 4114.43 | -326.78 | 203.34 | -337.02 | 40°25'57.681"N | 104°25'48.582"W | 0.26 | |
| 4258.00 | 17.040 | 291.980 | 4204.33 | -351.56 | 213.98 | -362.34 | 40°25'57.790"N | 104°25'48.908"W | 0.51 | |
| 4353.00 | 17.060 | 296.160 | 4295.15 | -376.39 | 225.33 | -387.76 | 40°25'57.905"N | 104°25'49.235"W | 1.29 | |
| 4447.00 | 16.840 | 297.180 | 4385.07 | -400.26 | 237.63 | -412.24 | 40°25'58.029"N | 104°25'49.549"W | 0.39 | |
| 4542.00 | 16.890 | 295.860 | 4475.98 | -424.29 | 249.94 | -436.90 | 40°25'58.154"N | 104°25'49.866"W | 0.41 | |
| 4637.00 | 16.910 | 295.600 | 4566.88 | -448.56 | 261.93 | -461.78 | 40°25'58.275"N | 104°25'50.186"W | 0.08 | |
| 4731.00 | 16.720 | 297.450 | 4656.86 | -472.27 | 274.07 | -486.11 | 40°25'58.398"N | 104°25'50.499"W | 0.60 | |
| 4826.00 | 16.930 | 297.660 | 4747.80 | -496.01 | 286.79 | -510.49 | 40°25'58.527"N | 104°25'50.812"W | 0.23 | |
| 4921.00 | 16.310 | 298.750 | 4838.83 | -519.31 | 299.62 | -534.44 | 40°25'58.656"N | 104°25'51.120"W | 0.73 | |
| 5016.00 | 17.010 | 294.710 | 4929.84 | -543.01 | 311.85 | -558.76 | 40°25'58.780"N | 104°25'51.432"W | 1.42 | |
| 5110.00 | 17.180 | 297.780 | 5019.69 | -567.16 | 324.07 | -583.53 | 40°25'58.904"N | 104°25'51.751"W | 0.98 | |
| 5205.00 | 15.490 | 298.170 | 5110.85 | -590.12 | 336.60 | -607.13 | 40°25'59.030"N | 104°25'52.054"W | 1.78 | |
| 5300.00 | 14.340 | 304.730 | 5202.66 | -610.34 | 349.29 | -627.98 | 40°25'59.158"N | 104°25'52.322"W | 2.15 | |
| 5394.00 | 16.500 | 299.190 | 5293.27 | -630.90 | 362.43 | -649.20 | 40°25'59.291"N | 104°25'52.594"W | 2.78 | |
| 5489.00 | 17.290 | 291.770 | 5384.18 | -655.19 | 374.25 | -674.10 | 40°25'59.410"N | 104°25'52.914"W | 2.42 | |



Actual Wellpath Report

WELLS RANCH STATE BB03-676 AWP

Page 4 of 10



| REFERENCE WELLPATH IDENTIFICATION | | | |
|-----------------------------------|---------------------------------|----------|---|
| Operator | NOBLE ENERGY, INC | Slot | SLOT#33 WELLS RANCH STATE BB03-676 (1290'FNL & 1000'FWL,SEC.03) |
| Area | COLORADO | Well | WELLS RANCH STATE BB03-676 |
| Field | WELD COUNTY (NOBLE NAD 83 GRID) | Wellbore | WELLS RANCH STATE BB03-676 AWB |
| Facility | SEC.03-T05N-R63W | | |

| WELLPATH DATA (186 stations) | | | | | | | | | | |
|------------------------------|--------------------|----------------|-------------|-------------------|---------------|--------------|----------------|-----------------|------------------|----------|
| MD [ft] | Inclination [°] | Azimuth [°] | TVD [ft] | Vert Sect [ft] | North [ft] | East [ft] | Latitude | Longitude | DLS [°/100ft] | Comments |
| 5584.00 | 16.810 | 296.210 | 5475.01 | -680.05 | 385.55 | -699.53 | 40°25'59.525"N | 104°25'53.241"W | 1.46 | |
| 5678.00 | 17.340 | 293.620 | 5564.87 | -704.49 | 397.17 | -724.56 | 40°25'59.643"N | 104°25'53.563"W | 0.99 | |
| 5773.00 | 17.080 | 299.780 | 5655.62 | -728.93 | 409.77 | -749.64 | 40°25'59.770"N | 104°25'53.885"W | 1.94 | |
| 5867.00 | 17.150 | 294.840 | 5745.47 | -752.85 | 422.45 | -774.20 | 40°25'59.898"N | 104°25'54.201"W | 1.55 | |
| 5962.00 | 17.380 | 294.770 | 5836.18 | -777.84 | 434.28 | -799.80 | 40°26'00.018"N | 104°25'54.530"W | 0.24 | |
| 6057.00 | 10.760 | 314.440 | 5928.33 | -796.47 | 446.45 | -819.04 | 40°26'00.141"N | 104°25'54.777"W | 8.50 | |
| 6152.00 | 7.620 | 16.070 | 6022.31 | -800.47 | 458.75 | -823.64 | 40°26'00.263"N | 104°25'54.835"W | 10.28 | |
| 6246.00 | 11.070 | 90.680 | 6115.34 | -789.41 | 464.65 | -812.86 | 40°26'00.320"N | 104°25'54.694"W | 12.37 | |
| 6341.00 | 19.570 | 101.980 | 6206.90 | -764.87 | 461.23 | -788.12 | 40°26'00.283"N | 104°25'54.375"W | 9.44 | |
| 6436.00 | 27.540 | 85.700 | 6294.00 | -727.43 | 459.57 | -750.56 | 40°26'00.262"N | 104°25'53.890"W | 10.76 | |
| 6531.00 | 34.910 | 72.390 | 6375.28 | -679.08 | 469.47 | -702.63 | 40°26'00.354"N | 104°25'53.268"W | 10.59 | |
| 6626.00 | 43.660 | 75.950 | 6448.75 | -620.52 | 485.69 | -644.78 | 40°26'00.508"N | 104°25'52.518"W | 9.51 | |
| 6720.00 | 52.280 | 80.490 | 6511.64 | -551.63 | 499.74 | -576.49 | 40°26'00.639"N | 104°25'51.632"W | 9.84 | |
| 6815.00 | 59.890 | 84.870 | 6564.63 | -473.12 | 509.64 | -498.37 | 40°26'00.727"N | 104°25'50.621"W | 8.87 | |
| 6910.00 | 69.630 | 87.820 | 6605.09 | -387.31 | 515.02 | -412.72 | 40°26'00.770"N | 104°25'49.512"W | 10.63 | |
| 7005.00 | 80.070 | 89.720 | 6629.89 | -295.78 | 516.95 | -321.18 | 40°26'00.778"N | 104°25'48.328"W | 11.16 | |
| 7099.00 | 85.350 | 91.400 | 6641.82 | -202.73 | 516.03 | -227.98 | 40°26'00.758"N | 104°25'47.123"W | 5.89 | |
| 7194.00 | 89.480 | 91.410 | 6646.10 | -108.10 | 513.70 | -133.12 | 40°26'00.724"N | 104°25'45.897"W | 4.35 | |
| 7289.00 | 90.060 | 90.000 | 6646.48 | -13.28 | 512.53 | -38.13 | 40°26'00.701"N | 104°25'44.669"W | 1.60 | |
| 7384.00 | 90.310 | 87.130 | 6646.17 | 81.68 | 514.91 | 56.83 | 40°26'00.713"N | 104°25'43.441"W | 3.03 | |
| 7479.00 | 90.310 | 86.540 | 6645.66 | 176.68 | 520.15 | 151.68 | 40°26'00.753"N | 104°25'42.213"W | 0.62 | |
| 7573.00 | 90.180 | 86.580 | 6645.26 | 270.67 | 525.79 | 245.51 | 40°26'00.798"N | 104°25'40.999"W | 0.14 | |
| 7668.00 | 90.220 | 86.100 | 6644.93 | 365.66 | 531.86 | 340.31 | 40°26'00.847"N | 104°25'39.772"W | 0.51 | |
| 7762.00 | 90.340 | 87.520 | 6644.47 | 459.65 | 537.09 | 434.16 | 40°26'00.887"N | 104°25'38.558"W | 1.52 | |
| 7857.00 | 90.280 | 86.370 | 6643.95 | 554.65 | 542.15 | 529.03 | 40°26'00.926"N | 104°25'37.331"W | 1.21 | |
| 7951.00 | 90.310 | 86.860 | 6643.47 | 648.64 | 547.70 | 622.86 | 40°26'00.969"N | 104°25'36.116"W | 0.52 | |
| 8046.00 | 90.120 | 86.040 | 6643.11 | 743.63 | 553.59 | 717.68 | 40°26'01.016"N | 104°25'34.889"W | 0.89 | |
| 8141.00 | 90.310 | 87.830 | 6642.76 | 838.63 | 558.66 | 812.54 | 40°26'01.055"N | 104°25'33.662"W | 1.89 | |
| 8236.00 | 90.220 | 89.360 | 6642.32 | 933.60 | 560.99 | 907.50 | 40°26'01.067"N | 104°25'32.434"W | 1.61 | |
| 8330.00 | 90.060 | 90.110 | 6642.09 | 1027.50 | 561.43 | 1001.50 | 40°26'01.060"N | 104°25'31.218"W | 0.82 | |



Actual Wellpath Report

WELLS RANCH STATE BB03-676 AWP

Page 5 of 10



REFERENCE WELLPATH IDENTIFICATION

| | | | |
|----------|---------------------------------|----------|---|
| Operator | NOBLE ENERGY, INC | Slot | SLOT#33 WELLS RANCH STATE BB03-676 (1290'FNL & 1000'FWL,SEC.03) |
| Area | COLORADO | Well | WELLS RANCH STATE BB03-676 |
| Field | WELD COUNTY (NOBLE NAD 83 GRID) | Wellbore | WELLS RANCH STATE BB03-676 AWP |
| Facility | SEC.03-T05N-R63W | | |

WELLPATH DATA (186 stations)

| MD [ft] | Inclination [°] | Azimuth [°] | TVD [ft] | Vert Sect [ft] | North [ft] | East [ft] | Latitude | Longitude | DLS [°/100ft] | Comments |
|------------|--------------------|----------------|-------------|-------------------|---------------|--------------|----------------|-----------------|------------------|----------|
| 8425.00 | 90.220 | 91.220 | 6641.85 | 1122.33 | 560.33 | 1096.49 | 40°26'01.037"N | 104°25'29.990"W | 1.18 | |
| 8520.00 | 90.090 | 91.600 | 6641.60 | 1217.08 | 557.99 | 1191.47 | 40°26'01.003"N | 104°25'28.762"W | 0.42 | |
| 8614.00 | 90.220 | 90.160 | 6641.34 | 1310.88 | 556.54 | 1285.45 | 40°26'00.977"N | 104°25'27.547"W | 1.54 | |
| 8709.00 | 89.940 | 89.100 | 6641.21 | 1405.80 | 557.16 | 1380.45 | 40°26'00.972"N | 104°25'26.319"W | 1.15 | |
| 8804.00 | 90.180 | 88.600 | 6641.11 | 1500.76 | 559.06 | 1475.43 | 40°26'00.980"N | 104°25'25.090"W | 0.58 | |
| 8899.00 | 90.280 | 89.020 | 6640.73 | 1595.72 | 561.04 | 1570.41 | 40°26'00.988"N | 104°25'23.862"W | 0.45 | |
| 8994.00 | 90.310 | 90.670 | 6640.24 | 1690.62 | 561.29 | 1665.40 | 40°26'00.979"N | 104°25'22.633"W | 1.74 | |
| 9088.00 | 89.910 | 91.710 | 6640.06 | 1784.39 | 559.34 | 1759.38 | 40°26'00.948"N | 104°25'21.418"W | 1.19 | |
| 9183.00 | 90.090 | 93.210 | 6640.06 | 1878.99 | 555.26 | 1854.29 | 40°26'00.896"N | 104°25'20.192"W | 1.59 | |
| 9278.00 | 90.180 | 92.660 | 6639.84 | 1973.52 | 550.40 | 1949.16 | 40°26'00.837"N | 104°25'18.966"W | 0.59 | |
| 9372.00 | 89.940 | 92.110 | 6639.74 | 2067.14 | 546.49 | 2043.08 | 40°26'00.787"N | 104°25'17.752"W | 0.64 | |
| 9467.00 | 90.280 | 91.790 | 6639.56 | 2161.82 | 543.26 | 2138.03 | 40°26'00.744"N | 104°25'16.525"W | 0.49 | |
| 9562.00 | 90.520 | 88.010 | 6638.89 | 2256.69 | 543.42 | 2233.01 | 40°26'00.734"N | 104°25'15.296"W | 3.99 | |
| 9656.00 | 90.000 | 86.980 | 6638.47 | 2350.69 | 547.53 | 2326.91 | 40°26'00.763"N | 104°25'14.082"W | 1.23 | |
| 9751.00 | 90.710 | 87.920 | 6637.88 | 2445.69 | 551.76 | 2421.82 | 40°26'00.794"N | 104°25'12.854"W | 1.24 | |
| 9846.00 | 90.090 | 86.760 | 6637.21 | 2540.68 | 556.17 | 2516.71 | 40°26'00.826"N | 104°25'11.626"W | 1.38 | |
| 9941.00 | 90.280 | 87.380 | 6636.91 | 2635.68 | 561.02 | 2611.59 | 40°26'00.862"N | 104°25'10.398"W | 0.68 | |
| 10035.00 | 90.150 | 87.590 | 6636.55 | 2729.68 | 565.15 | 2705.49 | 40°26'00.892"N | 104°25'09.183"W | 0.26 | |
| 10130.00 | 90.220 | 87.220 | 6636.25 | 2824.68 | 569.45 | 2800.40 | 40°26'00.923"N | 104°25'07.956"W | 0.40 | |
| 10224.00 | 90.090 | 86.190 | 6635.99 | 2918.67 | 574.85 | 2894.24 | 40°26'00.965"N | 104°25'06.741"W | 1.10 | |
| 10319.00 | 90.150 | 87.930 | 6635.79 | 3013.67 | 579.72 | 2989.11 | 40°26'01.002"N | 104°25'05.514"W | 1.83 | |
| 10414.00 | 90.090 | 86.920 | 6635.59 | 3108.67 | 583.99 | 3084.01 | 40°26'01.032"N | 104°25'04.286"W | 1.07 | |
| 10508.00 | 90.060 | 87.050 | 6635.47 | 3202.66 | 588.93 | 3177.88 | 40°26'01.070"N | 104°25'03.071"W | 0.14 | |
| 10603.00 | 90.090 | 87.410 | 6635.35 | 3297.66 | 593.53 | 3272.77 | 40°26'01.104"N | 104°25'01.844"W | 0.38 | |
| 10697.00 | 90.090 | 90.990 | 6635.20 | 3391.59 | 594.84 | 3366.75 | 40°26'01.105"N | 104°25'00.628"W | 3.81 | |
| 10792.00 | 90.220 | 93.870 | 6634.94 | 3486.19 | 590.81 | 3461.65 | 40°26'01.054"N | 104°24'59.402"W | 3.03 | |
| 10887.00 | 90.030 | 91.550 | 6634.74 | 3580.75 | 586.32 | 3556.54 | 40°26'00.998"N | 104°24'58.175"W | 2.45 | |
| 10981.00 | 90.120 | 88.970 | 6634.61 | 3674.61 | 585.89 | 3650.53 | 40°26'00.983"N | 104°24'56.960"W | 2.75 | |
| 11076.00 | 90.150 | 88.080 | 6634.39 | 3769.58 | 588.34 | 3745.50 | 40°26'00.995"N | 104°24'55.732"W | 0.94 | |
| 11171.00 | 90.120 | 87.250 | 6634.16 | 3864.58 | 592.21 | 3840.42 | 40°26'01.022"N | 104°24'54.504"W | 0.87 | |



Actual Wellpath Report

WELLS RANCH STATE BB03-676 AWP

Page 6 of 10



| REFERENCE WELLPATH IDENTIFICATION | | | |
|-----------------------------------|---------------------------------|----------|---|
| Operator | NOBLE ENERGY, INC | Slot | SLOT#33 WELLS RANCH STATE BB03-676 (1290'FNL & 1000'FWL,SEC.03) |
| Area | COLORADO | Well | WELLS RANCH STATE BB03-676 |
| Field | WELD COUNTY (NOBLE NAD 83 GRID) | Wellbore | WELLS RANCH STATE BB03-676 AWP |
| Facility | SEC.03-T05N-R63W | | |

| WELLPATH DATA (186 stations) | | | | | | | | | | |
|------------------------------|--------------------|----------------|-------------|-------------------|---------------|--------------|----------------|-----------------|------------------|----------|
| MD [ft] | Inclination [°] | Azimuth [°] | TVD [ft] | Vert Sect [ft] | North [ft] | East [ft] | Latitude | Longitude | DLS [°/100ft] | Comments |
| 11266.00 | 90.060 | 86.070 | 6634.02 | 3959.57 | 597.74 | 3935.25 | 40°26'01.065"N | 104°24'53.276"W | 1.24 | |
| 11360.00 | 90.120 | 86.510 | 6633.87 | 4053.56 | 603.83 | 4029.06 | 40°26'01.114"N | 104°24'52.063"W | 0.47 | |
| 11455.00 | 90.090 | 87.740 | 6633.69 | 4148.56 | 608.59 | 4123.93 | 40°26'01.150"N | 104°24'50.835"W | 1.30 | |
| 11550.00 | 90.060 | 89.760 | 6633.57 | 4243.52 | 610.66 | 4218.91 | 40°26'01.159"N | 104°24'49.606"W | 2.13 | |
| 11644.00 | 90.060 | 90.320 | 6633.47 | 4337.41 | 610.60 | 4312.91 | 40°26'01.147"N | 104°24'48.391"W | 0.60 | |
| 11739.00 | 90.000 | 92.350 | 6633.42 | 4432.16 | 608.38 | 4407.88 | 40°26'01.113"N | 104°24'47.163"W | 2.14 | |
| 11834.00 | 90.150 | 91.180 | 6633.30 | 4526.86 | 605.46 | 4502.83 | 40°26'01.073"N | 104°24'45.936"W | 1.24 | |
| 11929.00 | 90.090 | 88.800 | 6633.10 | 4621.74 | 605.47 | 4597.82 | 40°26'01.062"N | 104°24'44.708"W | 2.51 | |
| 12024.00 | 90.150 | 87.570 | 6632.90 | 4716.72 | 608.48 | 4692.77 | 40°26'01.080"N | 104°24'43.479"W | 1.30 | |
| 12118.00 | 90.180 | 86.680 | 6632.63 | 4810.72 | 613.20 | 4786.85 | 40°26'01.115"N | 104°24'42.265"W | 0.95 | |
| 12213.00 | 90.060 | 86.310 | 6632.43 | 4905.71 | 619.01 | 4881.47 | 40°26'01.161"N | 104°24'41.038"W | 0.41 | |
| 12307.00 | 90.060 | 88.100 | 6632.33 | 4999.71 | 623.59 | 4975.36 | 40°26'01.195"N | 104°24'39.823"W | 1.90 | |
| 12402.00 | 90.090 | 87.620 | 6632.21 | 5094.70 | 627.14 | 5070.29 | 40°26'01.218"N | 104°24'38.595"W | 0.51 | |
| 12497.00 | 90.120 | 89.520 | 6632.03 | 5189.67 | 629.51 | 5165.26 | 40°26'01.230"N | 104°24'37.366"W | 2.00 | |
| 12592.00 | 90.150 | 93.830 | 6631.81 | 5284.37 | 626.73 | 5260.19 | 40°26'01.191"N | 104°24'36.139"W | 4.54 | |
| 12686.00 | 90.090 | 97.130 | 6631.61 | 5377.38 | 617.76 | 5353.75 | 40°26'01.091"N | 104°24'34.931"W | 3.51 | |
| 12781.00 | 90.250 | 97.090 | 6631.33 | 5470.97 | 606.00 | 5448.02 | 40°26'00.964"N | 104°24'33.714"W | 0.17 | |
| 12876.00 | 90.310 | 96.300 | 6630.87 | 5564.67 | 594.92 | 5542.37 | 40°26'00.843"N | 104°24'32.496"W | 0.83 | |
| 12970.00 | 90.220 | 95.550 | 6630.43 | 5657.59 | 585.22 | 5635.87 | 40°26'00.735"N | 104°24'31.288"W | 0.80 | |
| 13065.00 | 90.150 | 95.850 | 6630.12 | 5751.55 | 575.78 | 5730.40 | 40°26'00.631"N | 104°24'30.067"W | 0.32 | |
| 13160.00 | 90.120 | 97.710 | 6629.90 | 5845.23 | 564.57 | 5824.73 | 40°26'00.508"N | 104°24'28.849"W | 1.96 | |
| 13255.00 | 90.250 | 94.990 | 6629.59 | 5939.02 | 554.06 | 5919.14 | 40°26'00.393"N | 104°24'27.630"W | 2.87 | |
| 13349.00 | 90.180 | 93.750 | 6629.24 | 6032.28 | 546.90 | 6012.86 | 40°26'00.311"N | 104°24'26.419"W | 1.32 | |
| 13444.00 | 90.220 | 91.820 | 6628.91 | 6126.83 | 542.28 | 6107.74 | 40°26'00.254"N | 104°24'25.193"W | 2.03 | |
| 13539.00 | 90.220 | 92.780 | 6628.54 | 6221.46 | 538.47 | 6202.66 | 40°26'00.205"N | 104°24'23.966"W | 1.01 | |
| 13634.00 | 90.280 | 99.600 | 6628.13 | 6315.24 | 528.23 | 6297.05 | 40°26'00.092"N | 104°24'22.747"W | 7.18 | |
| 13729.00 | 90.250 | 99.750 | 6627.69 | 6408.01 | 512.27 | 6390.70 | 40°25'59.923"N | 104°24'21.539"W | 0.16 | |
| 13824.00 | 90.250 | 97.490 | 6627.27 | 6501.13 | 498.03 | 6484.62 | 40°25'59.771"N | 104°24'20.327"W | 2.38 | |
| 13918.00 | 90.220 | 97.320 | 6626.89 | 6593.65 | 485.92 | 6577.84 | 40°25'59.640"N | 104°24'19.123"W | 0.18 | |
| 14013.00 | 90.280 | 94.760 | 6626.47 | 6687.52 | 475.92 | 6672.30 | 40°25'59.529"N | 104°24'17.904"W | 2.70 | |



Actual Wellpath Report

WELLS RANCH STATE BB03-676 AWP

Page 7 of 10



| REFERENCE WELLPATH IDENTIFICATION | | | |
|-----------------------------------|---------------------------------|----------|---|
| Operator | NOBLE ENERGY, INC | Slot | SLOT#33 WELLS RANCH STATE BB03-676 (1290'FNL & 1000'FWL,SEC.03) |
| Area | COLORADO | Well | WELLS RANCH STATE BB03-676 |
| Field | WELD COUNTY (NOBLE NAD 83 GRID) | Wellbore | WELLS RANCH STATE BB03-676 AWP |
| Facility | SEC.03-T05N-R63W | | |

| WELLPATH DATA (186 stations) | | | | | | | | | | |
|------------------------------|--------------------|----------------|-------------|-------------------|---------------|--------------|----------------|-----------------|------------------|----------|
| MD [ft] | Inclination [°] | Azimuth [°] | TVD [ft] | Vert Sect [ft] | North [ft] | East [ft] | Latitude | Longitude | DLS [°/100ft] | Comments |
| 14108.00 | 90.180 | 92.390 | 6626.09 | 6781.93 | 470.00 | 6767.11 | 40°25'59.459"N | 104°24'16.679"W | 2.50 | |
| 14203.00 | 90.250 | 90.280 | 6625.74 | 6876.68 | 467.79 | 6862.08 | 40°25'59.426"N | 104°24'15.451"W | 2.22 | |
| 14297.00 | 90.150 | 89.270 | 6625.41 | 6970.58 | 468.15 | 6956.07 | 40°25'59.418"N | 104°24'14.235"W | 1.08 | |
| 14392.00 | 90.280 | 89.800 | 6625.05 | 7065.50 | 468.93 | 7051.07 | 40°25'59.414"N | 104°24'13.007"W | 0.57 | |
| 14487.00 | 90.180 | 89.940 | 6624.67 | 7160.40 | 469.14 | 7146.07 | 40°25'59.404"N | 104°24'11.779"W | 0.18 | |
| 14581.00 | 90.220 | 92.710 | 6624.34 | 7254.15 | 466.97 | 7240.03 | 40°25'59.371"N | 104°24'10.564"W | 2.95 | |
| 14676.00 | 90.150 | 91.720 | 6624.04 | 7348.79 | 463.30 | 7334.96 | 40°25'59.324"N | 104°24'09.337"W | 1.04 | |
| 14771.00 | 90.430 | 89.020 | 6623.55 | 7443.64 | 462.68 | 7429.95 | 40°25'59.306"N | 104°24'08.109"W | 2.86 | |
| 14865.00 | 90.220 | 87.090 | 6623.02 | 7537.62 | 465.87 | 7523.89 | 40°25'59.326"N | 104°24'06.894"W | 2.07 | |
| 14960.00 | 90.250 | 87.570 | 6622.63 | 7632.62 | 470.30 | 7618.78 | 40°25'59.358"N | 104°24'05.666"W | 0.51 | |
| 15054.00 | 90.180 | 86.660 | 6622.28 | 7726.62 | 475.03 | 7712.66 | 40°25'59.393"N | 104°24'04.451"W | 0.97 | |
| 15149.00 | 90.090 | 86.640 | 6622.06 | 7821.61 | 480.58 | 7807.50 | 40°25'59.437"N | 104°24'03.224"W | 0.10 | |
| 15244.00 | 90.340 | 88.160 | 6621.70 | 7916.61 | 484.89 | 7902.40 | 40°25'59.467"N | 104°24'01.996"W | 1.62 | |
| 15338.00 | 90.370 | 87.910 | 6621.12 | 8010.60 | 488.11 | 7996.34 | 40°25'59.488"N | 104°24'00.781"W | 0.27 | |
| 15433.00 | 90.310 | 88.000 | 6620.55 | 8105.59 | 491.50 | 8091.28 | 40°25'59.510"N | 104°23'59.553"W | 0.11 | |
| 15527.00 | 90.150 | 91.550 | 6620.18 | 8199.48 | 491.87 | 8185.26 | 40°25'59.502"N | 104°23'58.337"W | 3.78 | |
| 15622.00 | 90.340 | 91.500 | 6619.77 | 8294.21 | 489.34 | 8280.23 | 40°25'59.465"N | 104°23'57.110"W | 0.21 | |
| 15716.00 | 90.370 | 93.960 | 6619.19 | 8387.77 | 484.87 | 8374.11 | 40°25'59.409"N | 104°23'55.896"W | 2.62 | |
| 15811.00 | 90.400 | 93.960 | 6618.55 | 8482.11 | 478.31 | 8468.88 | 40°25'59.333"N | 104°23'54.672"W | 0.03 | |
| 15905.00 | 90.220 | 92.450 | 6618.04 | 8575.59 | 473.05 | 8562.73 | 40°25'59.270"N | 104°23'53.459"W | 1.62 | |
| 16000.00 | 90.090 | 89.840 | 6617.78 | 8670.36 | 471.15 | 8657.71 | 40°25'59.239"N | 104°23'52.232"W | 2.75 | |
| 16095.00 | 90.150 | 86.890 | 6617.58 | 8765.33 | 473.86 | 8752.66 | 40°25'59.254"N | 104°23'51.003"W | 3.11 | |
| 16189.00 | 90.060 | 86.660 | 6617.41 | 8859.33 | 479.15 | 8846.51 | 40°25'59.295"N | 104°23'49.789"W | 0.26 | |
| 16284.00 | 90.400 | 86.190 | 6617.03 | 8954.32 | 485.08 | 8941.32 | 40°25'59.342"N | 104°23'48.562"W | 0.61 | |
| 16379.00 | 90.060 | 88.730 | 6616.65 | 9049.31 | 489.28 | 9036.22 | 40°25'59.372"N | 104°23'47.334"W | 2.70 | |
| 16473.00 | 90.370 | 89.800 | 6616.30 | 9143.25 | 490.49 | 9130.21 | 40°25'59.372"N | 104°23'46.119"W | 1.19 | |
| 16568.00 | 90.220 | 90.170 | 6615.1 | 9238.14 | 490.52 | 9225.21 | 40°25'59.361"N | 104°23'44.890"W | 0.42 | |
| 16662.00 | 90.150 | 90.560 | 6615.50 | 9332.00 | 489.92 | 9319.21 | 40°25'59.343"N | 104°23'43.675"W | 0.42 | |
| 16757.00 | 90.310 | 91.330 | 6615.12 | 9426.79 | 488.35 | 9414.19 | 40°25'59.316"N | 104°23'42.447"W | 0.83 | |
| 16851.00 | 90.010 | 91.470 | 6614.86 | 9520.54 | 486.05 | 9508.16 | 40°25'59.282"N | 104°23'41.232"W | 0.35 | |



Actual Wellpath Report

WELLS RANCH STATE BB03-676 AWP

Page 8 of 10



| REFERENCE WELLPATH IDENTIFICATION | | | |
|-----------------------------------|---------------------------------|----------|---|
| Operator | NOBLE ENERGY, INC | Slot | SLOT#33 WELLS RANCH STATE BB03-676 (1290'FNL & 1000'FWL,SEC.03) |
| Area | COLORADO | Well | WELLS RANCH STATE BB03-676 |
| Field | WELD COUNTY (NOBLE NAD 83 GRID) | Wellbore | WELLS RANCH STATE BB03-676 AWB |
| Facility | SEC.03-T05N-R63W | | |

| WELLPATH DATA (186 stations) | | | | | | | | | | |
|------------------------------|--------------------|----------------|-------------|-------------------|---------------|--------------|----------------|-----------------|------------------|---------------------|
| MD [ft] | Inclination [°] | Azimuth [°] | TVD [ft] | Vert Sect [ft] | North [ft] | East [ft] | Latitude | Longitude | DLS [°/100ft] | Comments |
| 16946.00 | 90.380 | 91.080 | 6614.54 | 9615.31 | 483.94 | 9603.14 | 40°25'59.249"N | 104°23'40.004"W | 0.57 | |
| 17041.00 | 90.280 | 92.190 | 6613.99 | 9710.02 | 481.23 | 9698.10 | 40°25'59.211"N | 104°23'38.777"W | 1.17 | |
| 17136.00 | 90.320 | 91.710 | 6613.49 | 9804.70 | 478.00 | 9793.04 | 40°25'59.167"N | 104°23'37.550"W | 0.51 | |
| 17230.00 | 90.250 | 90.630 | 6613.02 | 9898.47 | 476.08 | 9887.02 | 40°25'59.136"N | 104°23'36.335"W | 1.15 | |
| 17301.00 | 90.160 | 89.870 | 6612.77 | 9969.37 | 475.77 | 9958.02 | 40°25'59.125"N | 104°23'35.417"W | 1.08 | Last BHI MWD Survey |
| 17325.00 | 90.160 | 89.870 | 6612.70 | 9993.35 | 475.82 | 9982.02 | 40°25'59.122"N | 104°23'35.107"W | 0.00 | Projection to Bit |

| HOLE & CASING SECTIONS - Ref Wellbore: WELLS RANCH STATE BB03-676 AWB Ref Wellpath: WELLS RANCH STATE BB03-676 AWP | | | | | | | | | |
|---|------------------|----------------|------------------|-------------------|-----------------|-------------------|-------------------|-----------------|-----------------|
| String/Diameter | Start MD [ft] | End MD [ft] | Interval [ft] | Start TVD [ft] | End TVD [ft] | Start N/S [ft] | Start E/W [ft] | End N/S [ft] | End E/W [ft] |
| 9.625in Casing Surface | 30.00 | 1958.00 | 1928.00 | 30.00 | 1957.97 | -0.03 | 0.02 | -3.23 | 3.14 |



Actual Wellpath Report

WELLS RANCH STATE BB03-676 AWP

Page 9 of 10



| REFERENCE WELLPATH IDENTIFICATION | | | |
|-----------------------------------|---------------------------------|----------|---|
| Operator | NOBLE ENERGY, INC | Slot | SLOT#33 WELLS RANCH STATE BB03-676 (1290'FNL & 1000'FWL,SEC.03) |
| Area | COLORADO | Well | WELLS RANCH STATE BB03-676 |
| Field | WELD COUNTY (NOBLE NAD 83 GRID) | Wellbore | WELLS RANCH STATE BB03-676 AWB |
| Facility | SEC.03-T05N-R63W | | |

| TARGETS | | | | | | | | |
|---|-------------|---------------|--------------|----------------------|-----------------------|----------------|-----------------|---------|
| Name | TVD [ft] | North [ft] | East [ft] | Grid East [US ft] | Grid North [US ft] | Latitude | Longitude | Shape |
| WELLS RANCH STATE BB03-684 SECTION 2 | 8.00 | 36.43 | -0.44 | 3298146.71 | 1402098.65 | 40°25'55.992"N | 104°25'44.256"W | polygon |
| WELLS RANCH STATE BB03-684 SECTION 3 | 8.00 | 36.43 | -0.44 | 3298146.71 | 1402098.65 | 40°25'55.992"N | 104°25'44.256"W | polygon |
| WELLS RANCH STATE BB03-676 Rev-3 BHL Plan (915'FNL & 460'FWL,SEC.01) | 6613.04 | 483.86 | 9984.34 | 3308131.09 | 1402546.06 | 40°25'59.201"N | 104°23'35.075"W | point |
| WELLS RANCH STATE BB03-676 Rev-2 BHL Plan (915'FNL & 460'FWL,SEC.01) | 6613.07 | 483.86 | 9984.34 | 3308131.09 | 1402546.06 | 40°25'59.201"N | 104°23'35.075"W | point |
| WELLS RANCH STATE BB03-676 BHL FROM PLAT (915'FNL & 460'FWL,SEC.01) | 6613.11 | 483.31 | 9983.36 | 3308130.11 | 1402545.51 | 40°25'59.196"N | 104°23'35.088"W | point |
| WELLS RANCH STATE BB03-676 TPZ/LP FROM PLAN (735'FNL & 812'FWL,SEC.03) | 6648.61 | 548.46 | -201.85 | 3297945.31 | 1402610.66 | 40°26'01.075"N | 104°25'46.780"W | point |
| WELLS RANCH STATE BB03-676 WSU 460' SETBACK | 6700.00 | 0.00 | 0.00 | 3298147.15 | 1402062.22 | 40°25'55.632"N | 104°25'44.256"W | polygon |
| WELLS RANCH STATE BB03-676 WSU BOUNDRY | 6700.00 | 0.00 | 0.00 | 3298147.15 | 1402062.22 | 40°25'55.632"N | 104°25'44.256"W | polygon |

| WELLPATH COMPOSITION - Ref Wellbore: WELLS RANCH STATE BB03-676 AWB Ref Wellpath: WELLS RANCH STATE BB03-676 AWP | | | | |
|---|----------------|---|---|--------------------------------|
| Start MD [ft] | End MD [ft] | Positional Uncertainty Model | Log Name/Comment | Wellbore |
| 0.00 | 1953.70 | Gyrodata standard - Drop gyro or Multi-shot | 13.5" Surface Gyrodata Surveys <85.6'-1953.7'> | WELLS RANCH STATE BB03-676 AWB |
| 1953.70 | 17301.00 | OWSG MWD rev2 + IFR1 + Multi-Station Correction | BH 8.5" Hole ATCurve OWSG MWD rev2+ IFR1+MSA <1985'-17301'> | WELLS RANCH STATE BB03-676 AWB |
| 17301.00 | 17325.00 | Blind Drilling (std) | Projection to bit | WELLS RANCH STATE BB03-676 AWB |



Actual Wellpath Report

WELLS RANCH STATE BB03-676 AWP

Page 10 of 10



| REFERENCE WELLPATH IDENTIFICATION | | | |
|-----------------------------------|---------------------------------|----------|---|
| Operator | NOBLE ENERGY, INC | Slot | SLOT#33 WELLS RANCH STATE BB03-676 (1290'FNL & 1000'FWL,SEC.03) |
| Area | COLORADO | Well | WELLS RANCH STATE BB03-676 |
| Field | WELD COUNTY (NOBLE NAD 83 GRID) | Wellbore | WELLS RANCH STATE BB03-676 AWB |
| Facility | SEC.03-T05N-R63W | | |

| WELLPATH COMMENTS | | | | |
|-------------------|--------------------|----------------|-------------|--|
| MD [ft] | Inclination [°] | Azimuth [°] | TVD [ft] | Comment |
| 1953.70 | 0.800 | 104.150 | 1953.67 | Tied to 3rd Party Surface Gyro Surveys |
| 1985.00 | 1.010 | 90.290 | 1984.97 | First BHI MWD Survey |
| 17301.00 | 90.160 | 89.870 | 6612.77 | Last BHI MWD Survey |
| 17325.00 | 90.160 | 89.870 | 6612.70 | Projection to Bit |