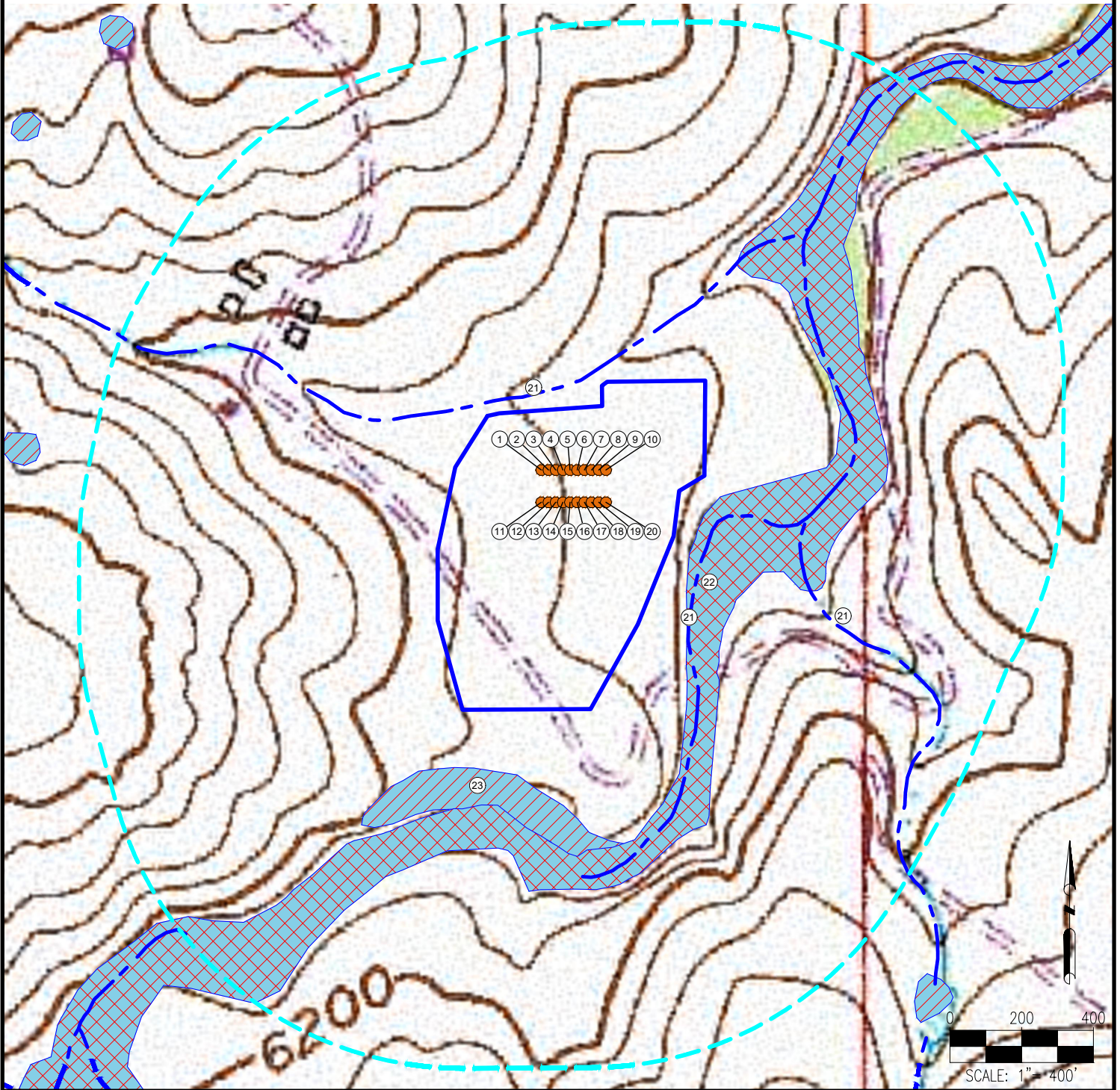


CRYSTAL-RUBY PAD HYDROLOGY MAP



MEASUREMENTS ARE MADE FROM THE NEAREST EDGE OF THE DISTURBANCE AREA.

1. CRYSTAL 6-65 22-10 1HN
2. CRYSTAL 6-65 22-10 2HN
3. CRYSTAL 6-65 22-10 3HN
4. CRYSTAL 6-65 22-10 4HN
5. CRYSTAL 6-65 22-10 5HN
6. CRYSTAL 6-65 22-10 6HN
7. CRYSTAL 6-65 22-10 7HN

8. CRYSTAL 6-65 22-10 8HN
9. CRYSTAL 6-65 22-10 9HN
10. CRYSTAL 6-65 22-10 10HN
11. RUBY 6-65 22-27 1HN
12. RUBY 6-65 22-27 2HN
13. RUBY 6-65 22-27 3HN
14. RUBY 6-65 22-27 4HN

15. RUBY 6-65 22-27 5HN
16. RUBY 6-65 22-27 6HN
17. RUBY 6-65 22-27 7HN
18. RUBY 6-65 22-27 8HN
19. RUBY 6-65 22-27 9HN
20. RUBY 6-65 22-27 10HN

22. FLOODPLAIN IS $\pm 59'$ SE
23. WETLAND IS $\pm 161'$ S

21. INTERMITTENT STREAMS ARE $\pm 37'$ N, $\pm 97'$ SE, $\pm 309'$ SE

LEGEND:

- = PROPOSED WELL
- = WETLAND
- = FLOODPLAIN
- = STREAM
- = 1000' RADIUS
- = PROPOSED DISTURBANCE AREA

DISCLAIMER:
THIS PLOT DOES NOT REPRESENT A MONUMENTED LAND SURVEY AND SHOULD NOT BE RELIED UPON TO DETERMINE BOUNDARY LINES, PROPERTY OWNERSHIP OR OTHER PROPERTY INTERESTS. PARCEL LINES, IF DEPICTED HAVE NOT BEEN FIELD VERIFIED AND MAY BE BASED UPON PUBLICLY AVAILABLE DATA THAT ALSO HAS NOT BEEN INDEPENDENTLY VERIFIED.

DATA SOURCE:
TOPO MAP: USGS
NHD: USGS
PUBLICLY AVAILABLE DATA SOURCES HAVE NOT BEEN INDEPENDENTLY VERIFIED BY ASCENT.



FIELD DATE:
04-25-19

DRAWING DATE:
07-16-19

BY:
DNS

CHECKED:
IJM

SITE NAME:
CRYSTAL-RUBY PAD

SURFACE LOCATION:
**NE 1/4 SE 1/4 SEC. 22, T6S, R65W, 6TH P.M.
ELBERT COUNTY, COLORADO**

PREPARED FOR:

GMT
Exploration Company LLC