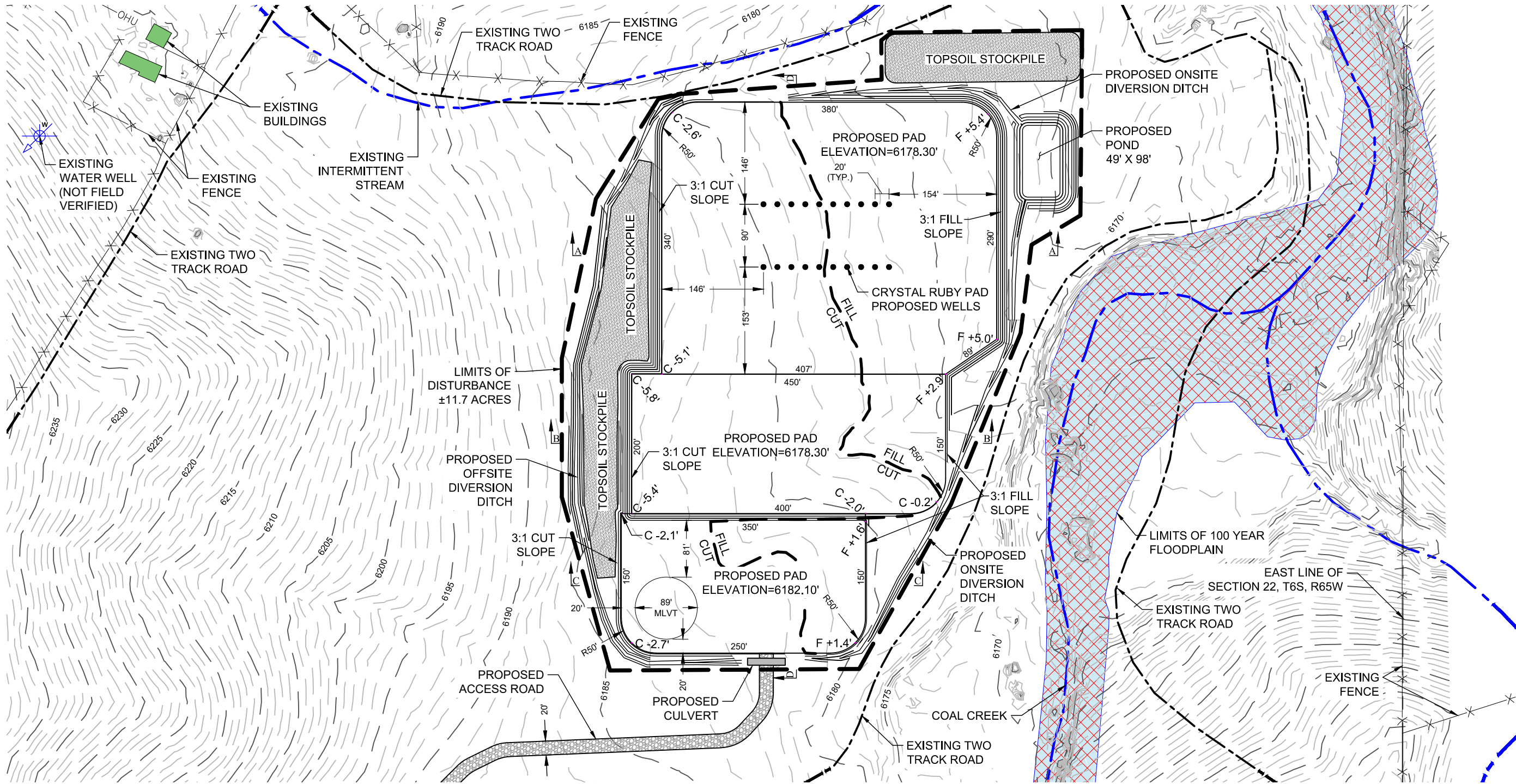


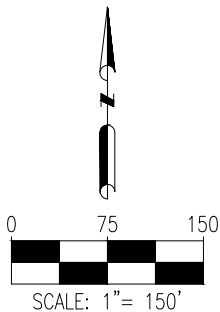
CRYSTAL RUBY PAD
PAD LAYOUT



NOTES:

1. A COMPLETE UTILITIES LOCATION IS RECOMMENDED BEFORE CONSTRUCTION.
2. GEOGRAPHIC POSITIONS/COORDINATES SHOWN HEREON ARE IN NAD83 DATUM.
3. EARTHWORK QUANTITIES ARE APPROXIMATE & FOR INFORMATION ONLY. 6" OF TOPSOIL HAS BEEN SUBTRACTED FROM EXISTING SURFACE PRIOR TO PERFORMING EARTHWORK CALCULATIONS. CUT/FILL LABELS ARE SUBGRADE. FINISHED ELEVATION INCLUDES 6" COMPACTED PLATING.
4. STOCKPILES ARE ASSUMED TO HAVE 3:1 SIDE SLOPES AND A MAX HEIGHT OF 10'.
5. STOCKPILE FOOTPRINTS ARE BASED ON AN EXPANSION VOLUME WITH A 1.25 FACTOR.

DISCLAIMER:
THIS PLOT DOES NOT REPRESENT A MONUMENTED LAND SURVEY AND SHOULD NOT BE RELIED UPON TO DETERMINE BOUNDARY LINES, PROPERTY OWNERSHIP OR OTHER PROPERTY INTERESTS. PARCEL LINES IF DEPICTED HAVE NOT BEEN FIELD VERIFIED AND MAY BE BASED UPON PUBLICLY AVAILABLE DATA THAT ALSO HAS NOT BEEN INDEPENDENTLY VERIFIED.



WELL PAD EARTHWORK QUANTITIES

SUB GRADE ELEVATION	6178.30' - 6182.10'
TOTAL CUT	15,488 CY
FILL	14,080 CY
10% FILL FACTOR	1,408 CY
TOTAL FILL	15,488 CY
NET EXCESS MATERIAL	0 CY
6" COMPACTED PLATING	6,346 CY
TOPSOIL FROM GRADED AREA (BANK VOLUME)	7,497 CY
TOTAL DISTURBANCE AREA	11.7 ACRES



8620 Wolff Court
Westminster, CO 80031
(303) 928-7128
www.ascentgeomatics.com

FIELD DATE:

04-04-18

DRAWING DATE:

11-15-19

BY: AM

CHECKED: JDB

SITE NAME:

CRYSTAL RUBY PAD

SURFACE LOCATION:

NE 1/4 SE 1/4 SEC. 22, T6S, R65W, 6TH P.M.

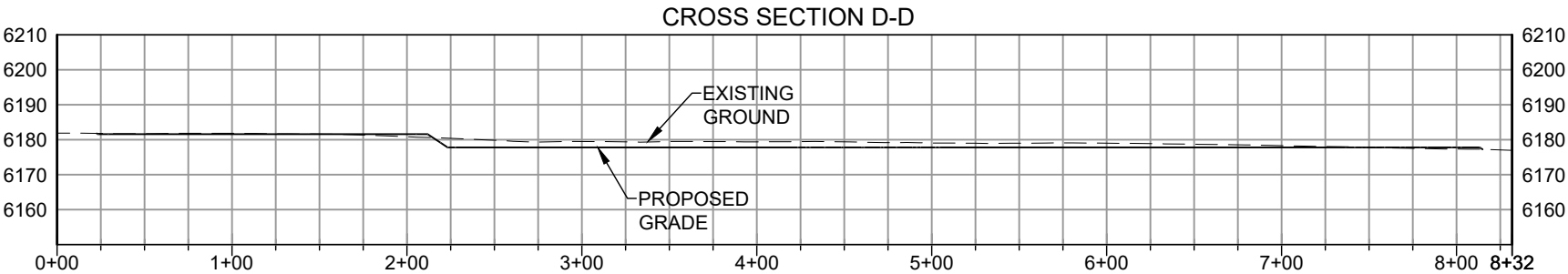
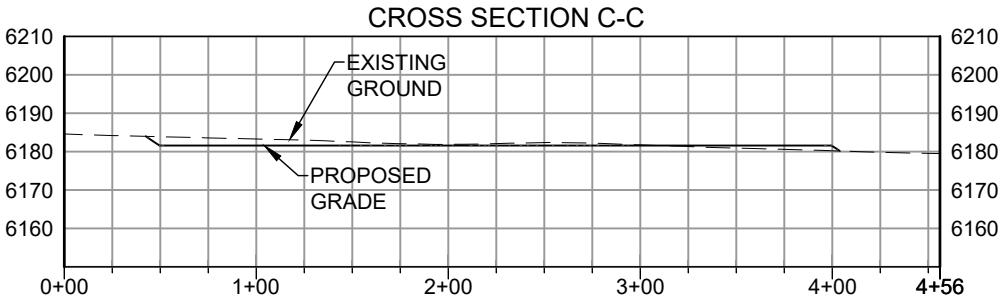
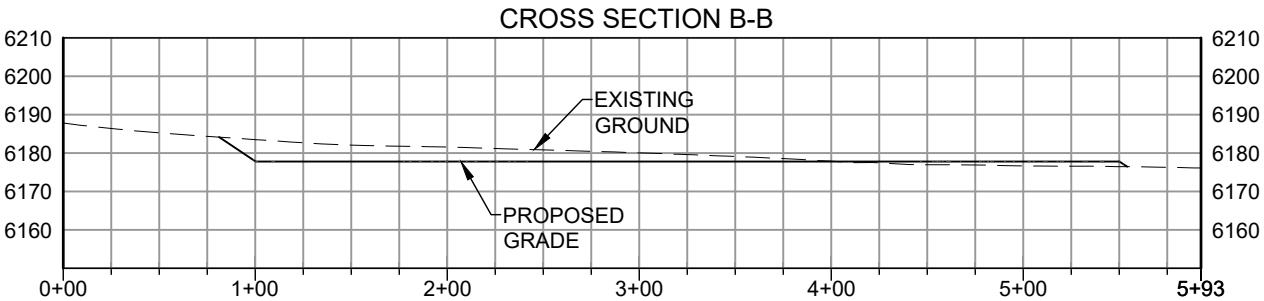
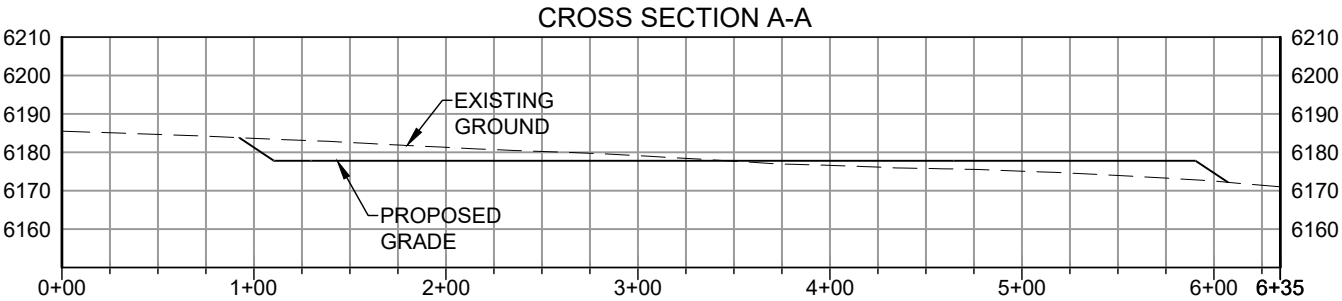
ELBERT COUNTY, COLORADO

PREPARED FOR:



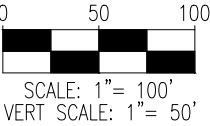
DIG SAFELY
BEFORE YOU DIG CALL:
1-800-922-1987
UTILITY NOTIFICATION
CENTER OF COLORADO

CRYSTAL RUBY PAD
CROSS SECTIONS



NOTE:
1. A COMPLETE UTILITIES LOCATION IS RECOMMENDED BEFORE CONSTRUCTION.

DISCLAIMER:
THIS PLOT DOES NOT REPRESENT A MONUMENTED LAND SURVEY AND SHOULD NOT BE RELIED UPON TO DETERMINE
BOUNDARY LINES, PROPERTY OWNERSHIP OR OTHER PROPERTY INTERESTS. PARCEL LINES, IF DEPICTED HAVE NOT BEEN
FIELD VERIFIED AND MAY BE BASED UPON PUBLICLY AVAILABLE DATA THAT ALSO HAS NOT BEEN INDEPENDENTLY VERIFIED.



8620 Wolff Court
Westminster, CO 80031
(303) 928-7128
www.ascsentgeomatics.com

FIELD DATE:
04-04-18

DRAWING DATE:
11-15-19

BY:
AM

CHECKED:
JDB

SITE NAME:
CRYSTAL RUBY PAD

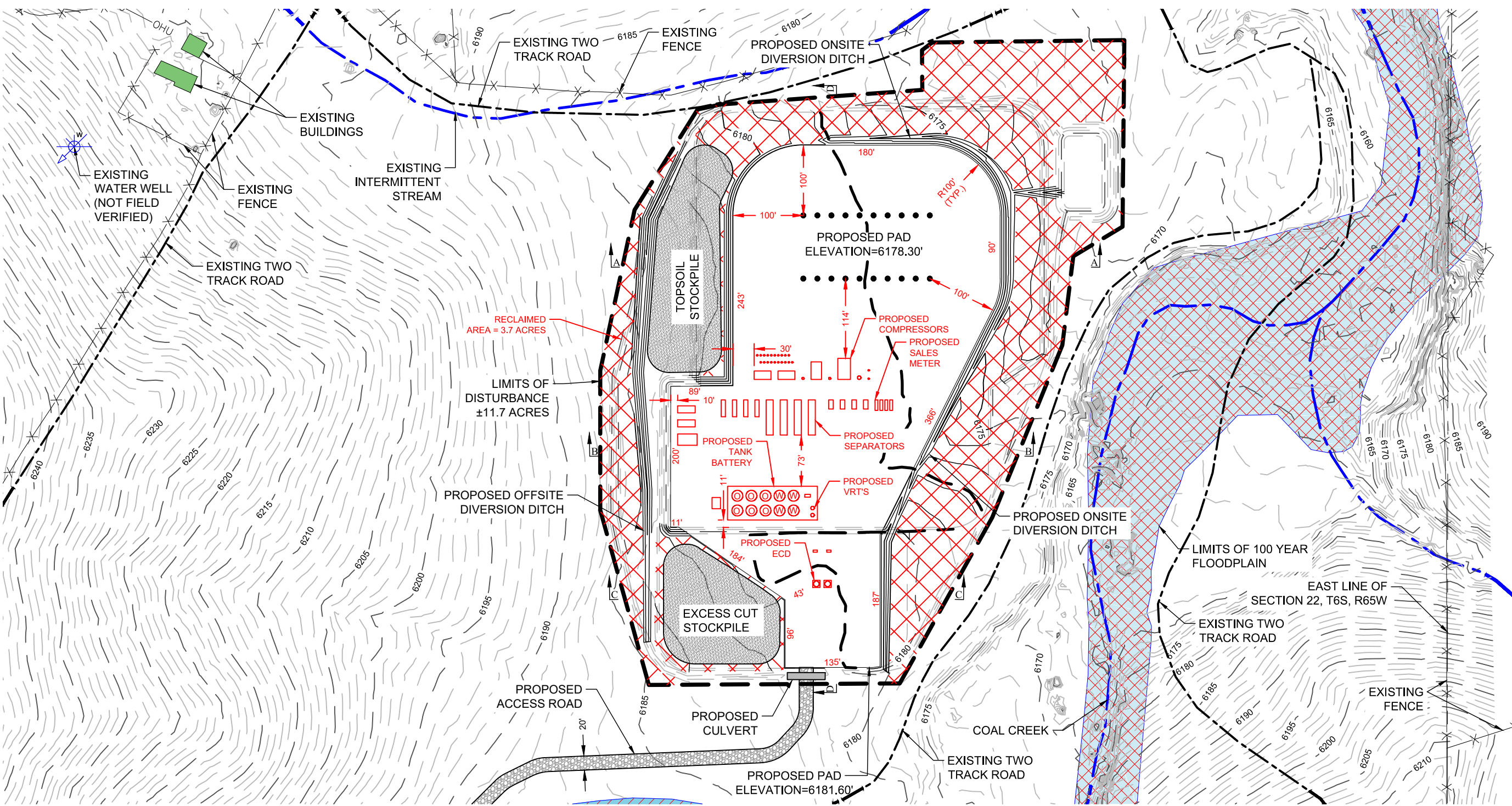
SURFACE LOCATION:
NE 1/4 SE 1/4 SEC. 22, T6S, R65W, 6TH P.M.
ELBERT COUNTY, COLORADO

PREPARED FOR:



DIG SAFELY
BEFORE YOU DIG CALL:
1-800-922-1987
UTILITY NOTIFICATION
CENTER OF COLORADO

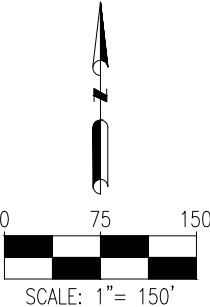
CRYSTAL RUBY PAD
PRODUCTION LAYOUT



- NOTES:
1. A COMPLETE UTILITIES LOCATION IS RECOMMENDED BEFORE CONSTRUCTION.
 2. GEOGRAPHIC POSITIONS/COORDINATES SHOWN HEREON ARE IN NAD83 DATUM.
 3. EARTHWORK QUANTITIES ARE APPROXIMATE & FOR INFORMATION ONLY. 6" OF TOPSOIL HAS BEEN SUBTRACTED FROM EXISTING SURFACE PRIOR TO PERFORMING EARTHWORK CALCULATIONS.
 4. CUT/FILL LABELS ARE SUBGRADE. FINISHED ELEVATION INCLUDES 6" COMPACTED PLATING.
 5. STOCKPILES ARE ASSUMED TO HAVE 3:1 SIDE SLOPES AND A MAX HEIGHT OF 10'.
 6. STOCKPILE FOOTPRINTS ARE BASED ON AN EXPANSION VOLUME WITH A 1.25 FACTOR.

RECLAIMED QUANTITIES

TOTAL CUT FOR RECLAIMED AREA	7,964 CY
TOTAL FILL	4,188 CY
REMAINING EXCESS CUT STOCKPILE	3,776 CY



DISCLAIMER:
THIS PLOT DOES NOT REPRESENT A MONUMENTED LAND SURVEY AND SHOULD NOT BE RELIED UPON TO DETERMINE BOUNDARY LINES, PROPERTY OWNERSHIP OR OTHER PROPERTY INTERESTS. PARCEL LINES, IF DEPICTED HAVE NOT BEEN FIELD VERIFIED AND MAY BE BASED UPON PUBLICLY AVAILABLE DATA THAT ALSO HAS NOT BEEN INDEPENDENTLY VERIFIED.

DIG SAFELY
BEFORE YOU DIG CALL:
1-800-922-1987
UTILITY NOTIFICATION
CENTER OF COLORADO

 8620 Wolff Court Westminster, CO 80031 (303) 928-7128 www.ascentgeomatics.com	FIELD DATE: 04-04-18	SITE NAME: CRYSTAL RUBY PAD	PREPARED FOR:
	DRAWING DATE: 11-15-19	SURFACE LOCATION: NE 1/4 SE 1/4 SEC. 22, T6S, R65W, 6TH P.M. ELBERT COUNTY, COLORADO	
BY: AM	CHECKED: JDB		