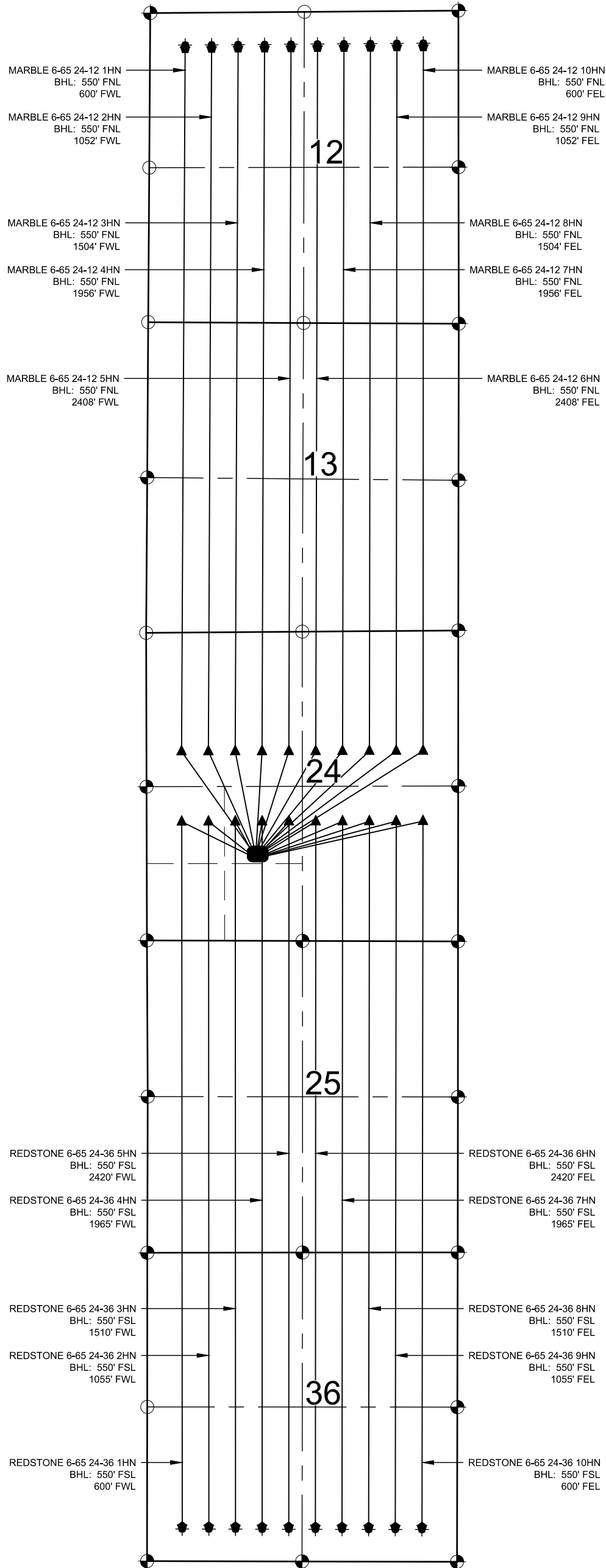


# MARBLE-REDSTONE PAD MULTI-WELL PLAN



**NOTES:**

1. THIS FIELD SURVEY CONFORMS TO THE MINIMUM STANDARDS SET BY THE COGCC, RULE NO. 215
2. ALL BEARINGS ARE GRID BEARINGS OF THE COLORADO STATE PLANE COORDINATE SYSTEM, CENTRAL ZONE, NORTH AMERICAN DATUM 1983/2011. THE LINEAL DIMENSIONS AS SHOWN HEREIN ARE GRID DISTANCES BASED UPON THE "U.S. SURVEY FOOT." TO GET GROUND DISTANCES MULTIPLY SHOWN DISTANCE BY 1.0003323.
3. FIELD VERIFICATION OF MONUMENTS COMPLETED WITHIN 1 YEAR OF SIGNATURE DATE, UNLESS OTHERWISE NOTED.

**NOTES:**

- MARBLE 6-65 24-12 1HN TO BE AT 1526' FSL & 1808' FWL. BOTTOM HOLE AT 550' FNL & 600' FWL, SEC. 12.  
 MARBLE 6-65 24-12 2HN TO BE AT 1527' FSL & 1828' FWL. BOTTOM HOLE AT 550' FNL & 1052' FWL, SEC. 12.  
 MARBLE 6-65 24-12 3HN TO BE AT 1527' FSL & 1848' FWL. BOTTOM HOLE AT 550' FNL & 1504' FWL, SEC. 12.  
 MARBLE 6-65 24-12 4HN TO BE AT 1527' FSL & 1868' FWL. BOTTOM HOLE AT 550' FNL & 1956' FWL, SEC. 12.  
 MARBLE 6-65 24-12 5HN TO BE AT 1527' FSL & 1888' FWL. BOTTOM HOLE AT 550' FNL & 2408' FWL, SEC. 12.  
 MARBLE 6-65 24-12 6HN TO BE AT 1527' FSL & 1908' FWL. BOTTOM HOLE AT 550' FNL & 2408' FWL, SEC. 12.  
 MARBLE 6-65 24-12 7HN TO BE AT 1527' FSL & 1928' FWL. BOTTOM HOLE AT 550' FNL & 1956' FEL, SEC. 12.  
 MARBLE 6-65 24-12 8HN TO BE AT 1527' FSL & 1948' FWL. BOTTOM HOLE AT 550' FNL & 1504' FEL, SEC. 12.  
 MARBLE 6-65 24-12 9HN TO BE AT 1527' FSL & 1968' FWL. BOTTOM HOLE AT 550' FNL & 1052' FEL, SEC. 12.  
 MARBLE 6-65 24-12 10HN TO BE AT 1527' FSL & 1988' FWL. BOTTOM HOLE AT 550' FNL & 600' FEL, SEC. 12.  
 REDSTONE 6-65 24-36 1HN TO BE AT 1436' FSL & 1808' FWL. BOTTOM HOLE AT 550' FSL & 600' FWL, SEC. 36.  
 REDSTONE 6-65 24-36 2HN TO BE AT 1437' FSL & 1828' FWL. BOTTOM HOLE AT 550' FSL & 1055' FWL, SEC. 36.  
 REDSTONE 6-65 24-36 3HN TO BE AT 1437' FSL & 1848' FWL. BOTTOM HOLE AT 550' FSL & 1510' FWL, SEC. 36.  
 REDSTONE 6-65 24-36 4HN TO BE AT 1437' FSL & 1868' FWL. BOTTOM HOLE AT 550' FSL & 1965' FWL, SEC. 36.  
 REDSTONE 6-65 24-36 5HN TO BE AT 1437' FSL & 1888' FWL. BOTTOM HOLE AT 550' FSL & 2420' FWL, SEC. 36.  
 REDSTONE 6-65 24-36 6HN TO BE AT 1437' FSL & 1908' FWL. BOTTOM HOLE AT 550' FSL & 2420' FEL, SEC. 36.  
 REDSTONE 6-65 24-36 7HN TO BE AT 1437' FSL & 1928' FWL. BOTTOM HOLE AT 550' FSL & 1965' FEL, SEC. 36.  
 REDSTONE 6-65 24-36 8HN TO BE AT 1437' FSL & 1948' FWL. BOTTOM HOLE AT 550' FSL & 1510' FEL, SEC. 36.  
 REDSTONE 6-65 24-36 9HN TO BE AT 1437' FSL & 1968' FWL. BOTTOM HOLE AT 550' FSL & 1055' FEL, SEC. 36.  
 REDSTONE 6-65 24-36 10HN TO BE AT 1437' FSL & 1988' FWL. BOTTOM HOLE AT 550' FSL & 600' FEL, SEC. 36.

**LEGEND**

- = EXISTING MONUMENT
- ▲ = LANDING POINT
- = CALCULATED POSITION
- ◆ = EXISTING WELL
- = PROPOSED WELL
- LP = LANDING POINT
- ⬇ = BOTTOM HOLE
- BHL = BOTTOM HOLE
- ⬆ = LAST TAKE POINT

