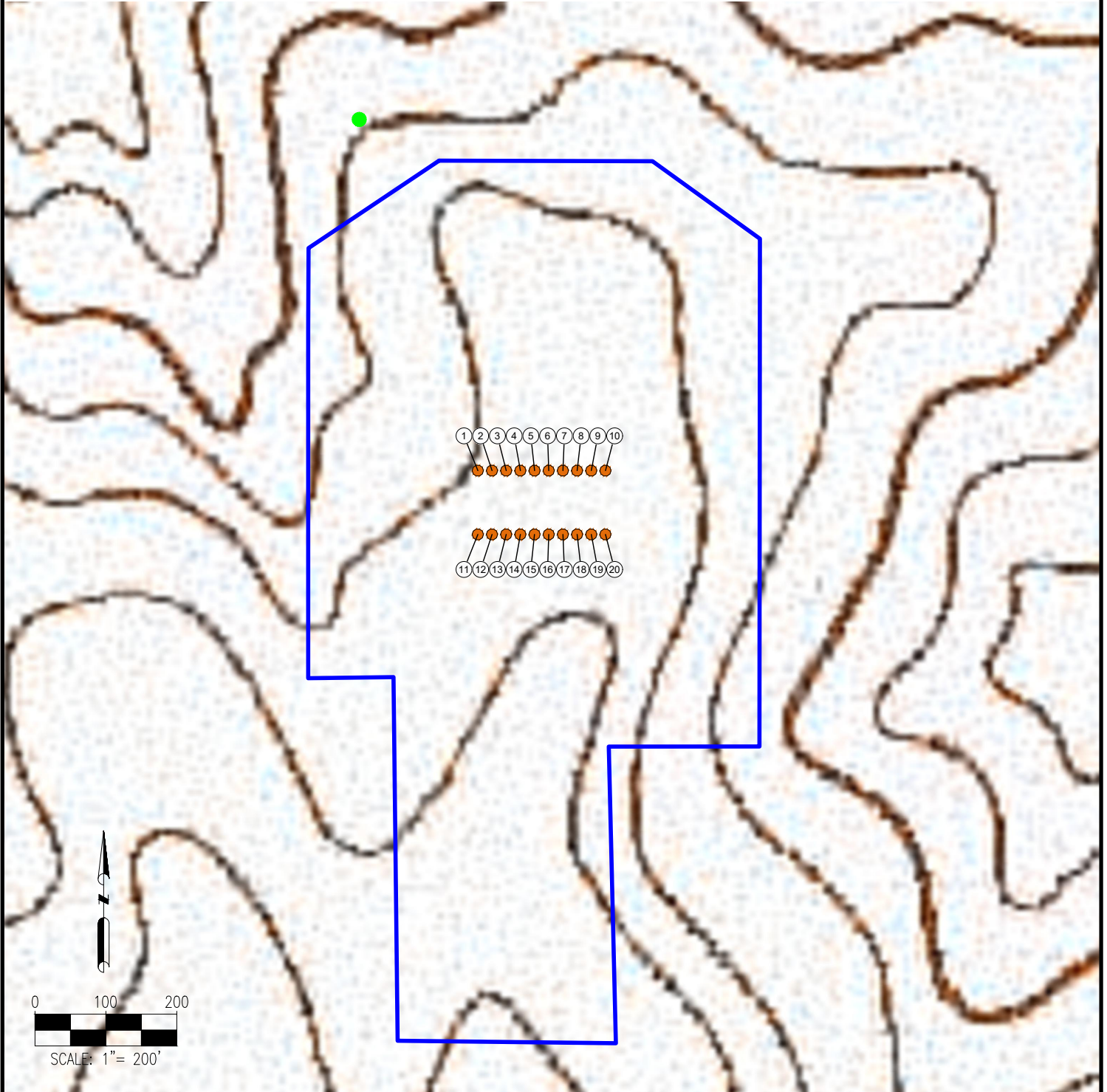


# MARBLE-REDSTONE PAD REFERENCE AREA MAP



- |                          |                             |                              |
|--------------------------|-----------------------------|------------------------------|
| 1. MARBLE 6-65 24-12 1HN | 9. MARBLE 6-65 24-12 9HN    | 17. REDSTONE 6-65 24-36 7HN  |
| 2. MARBLE 6-65 24-12 2HN | 10. MARBLE 6-65 24-12 10HN  | 18. REDSTONE 6-65 24-36 8HN  |
| 3. MARBLE 6-65 24-12 3HN | 11. REDSTONE 6-65 24-36 1HN | 19. REDSTONE 6-65 24-36 9HN  |
| 4. MARBLE 6-65 24-12 4HN | 12. REDSTONE 6-65 24-36 2HN | 20. REDSTONE 6-65 24-36 10HN |
| 5. MARBLE 6-65 24-12 5HN | 13. REDSTONE 6-65 24-36 3HN |                              |
| 6. MARBLE 6-65 24-12 6HN | 14. REDSTONE 6-65 24-36 4HN |                              |
| 7. MARBLE 6-65 24-12 7HN | 15. REDSTONE 6-65 24-36 5HN |                              |
| 8. MARBLE 6-65 24-12 8HN | 16. REDSTONE 6-65 24-36 6HN |                              |

### REFERENCE LOCATION

\*\*REFERENCE PHOTO POINT\*\*

LAT: 39.512231° N  
LONG: 104.618503° W  
ELEVATION: 6264'

DISCLAIMER:  
THIS PLOT DOES NOT REPRESENT A MONUMENTED LAND SURVEY AND SHOULD NOT BE RELIED UPON TO DETERMINE BOUNDARY LINES, PROPERTY OWNERSHIP OR OTHER PROPERTY INTERESTS. PARCEL LINES, IF DEPICTED HAVE NOT BEEN FIELD VERIFIED AND MAY BE BASED UPON PUBLICLY AVAILABLE DATA THAT ALSO HAS NOT BEEN INDEPENDENTLY VERIFIED.

DATA SOURCE:  
TOPO MAP: USGS  
  
PUBLICLY AVAILABLE DATA SOURCES HAVE NOT BEEN INDEPENDENTLY VERIFIED BY ASCENT.

### LEGEND:

- = PROPOSED WELL
- = REFERENCE PHOTO POINT
- = PROPOSED DISTURBANCE AREA

8620 Wolff Court  
Westminster, CO 80031  
(303) 928-7128  
www.ascentgeomatics.com

FIELD DATE:  
**04-25-19**  
  
DRAWING DATE:  
**07-16-19**  
  
BY:  
DNS

SITE NAME:  
**MARBLE-REDSTONE PAD**  
  
SURFACE LOCATION:  
**NE 1/4 SW 1/4 SEC. 24, T6S, R65W, 6TH P.M.  
ELBERT COUNTY, COLORADO**

PREPARED FOR:

**GMT**  
Exploration Company LLC