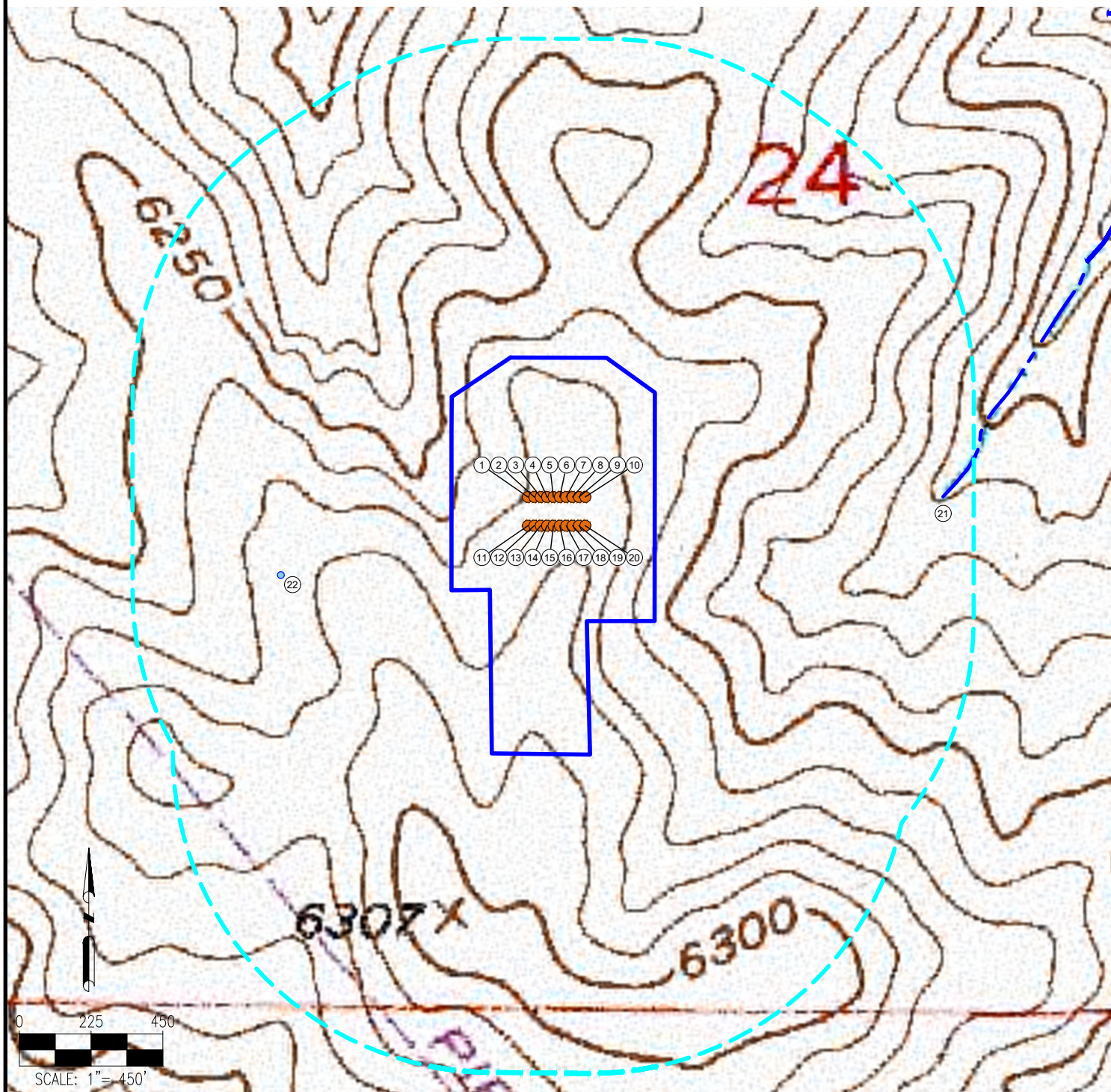


MARBLE-REDSTONE PAD HYDROLOGY MAP



MEASUREMENTS ARE MADE FROM THE NEAREST EDGE OF THE DISTURBANCE AREA.

- | | | | |
|--------------------------|-----------------------------|------------------------------|------------------------------------|
| 1. MARBLE 6-65 24-12 1HN | 8. MARBLE 6-65 24-12 8HN | 15. REDSTONE 6-65 24-36 5HN | 21. INTERMITTENT STREAM IS ±904' E |
| 2. MARBLE 6-65 24-12 2HN | 9. MARBLE 6-65 24-12 9HN | 16. REDSTONE 6-65 24-36 6HN | 22. WATER TROUGH IS ±525' W |
| 3. MARBLE 6-65 24-12 3HN | 10. MARBLE 6-65 24-12 10HN | 17. REDSTONE 6-65 24-36 7HN | |
| 4. MARBLE 6-65 24-12 4HN | 11. REDSTONE 6-65 24-36 1HN | 18. REDSTONE 6-65 24-36 8HN | |
| 5. MARBLE 6-65 24-12 5HN | 12. REDSTONE 6-65 24-36 2HN | 19. REDSTONE 6-65 24-36 9HN | |
| 6. MARBLE 6-65 24-12 6HN | 13. REDSTONE 6-65 24-36 3HN | 20. REDSTONE 6-65 24-36 10HN | |
| 7. MARBLE 6-65 24-12 7HN | 14. REDSTONE 6-65 24-36 4HN | | |

LEGEND:

- = PROPOSED WELL
- = WATER TROUGH
- = STREAM
- = 1000' RADIUS
- = PROPOSED DISTURBANCE AREA

DISCLAIMER:
THIS PLOT DOES NOT REPRESENT A MONUMENTED LAND SURVEY AND SHOULD NOT BE RELIED UPON TO DETERMINE BOUNDARY LINES, PROPERTY OWNERSHIP OR OTHER PROPERTY INTERESTS. PARCEL LINES, IF DEPICTED HAVE NOT BEEN FIELD VERIFIED AND MAY BE BASED UPON PUBLICLY AVAILABLE DATA THAT ALSO HAS NOT BEEN INDEPENDENTLY VERIFIED.

DATA SOURCE:
TOPO MAP: USGS
NHD: USGS

PUBLICLY AVAILABLE DATA SOURCES HAVE NOT BEEN INDEPENDENTLY VERIFIED BY ASCENT.

8620 Wolff Court
Westminster, CO 80031
(303) 928-7128
www.ascentgeomatics.com

FIELD DATE:
04-25-19

DRAWING DATE:
07-16-19

BY:
DNS

CHECKED:
IJM

SITE NAME:
MARBLE-REDSTONE PAD

SURFACE LOCATION:
**NE 1/4 SW 1/4 SEC. 24, T6S, R65W, 6TH P.M.
ELBERT COUNTY, COLORADO**

PREPARED FOR:

GMT
Exploration Company LLC