

FINAL PLOT

Well Name: **Kugel 1I-18H-H267**

Surface Location: Kugel Pad Sec.18-T2N-R67W

North American Datum 1983, US State Plane 1983, Colorado Northern Zone

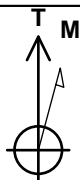
Ground Elevation: 4953.0

+N/-S +E/-W Northing Easting Latitude Longitude Slot
0.0 0.0 1294220.59 3160350.09 40.139606 -104.926457

Ensign 153 RKB - 23' WELL @ 4976.0ft (Ensign 153 RKB - 23')

WELLBORE TARGET DETAILS

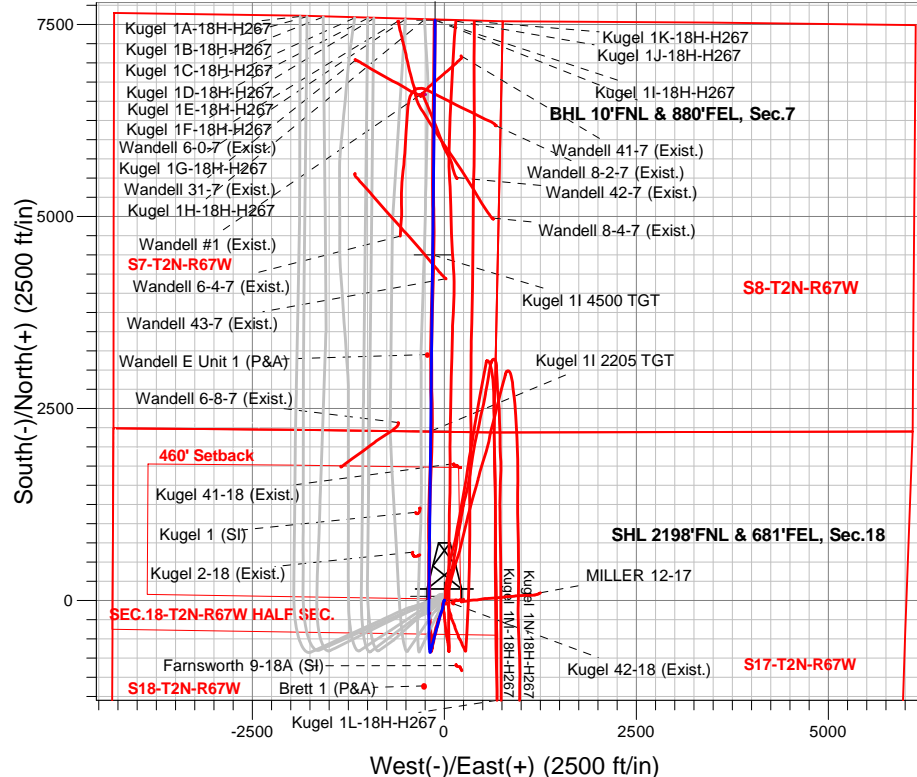
Name	TVD	+N/-S	+E/-W	Shape
SHL 2198'FNL & 681'FEL, Sec.18	1.0	0.0	0.0	Point
Kugel 1I 2205 TGT	7434.0	2205.0	-175.9	Point
BHL 10'FNL & 880'FEL, Sec.7	7440.0	7558.9	-117.7	Point
Kugel 1I 4500 TGT	7456.0	4500.0	-151.0	Point
TPZ 2145'FNL & 880'FEL, Sec.18	7482.0	55.8	-199.3	Point



Azimuths to True North
Magnetic North: 8.30°

Magnetic Field
Strength: 52035.8snT
Dip Angle: 66.52°
Date: 7/10/2019
Model: HDGM

Kugel Pad Sec.18-T2N-R67W
Kugel 1I-18H-H267
Plan #7 (7-10-19)
9:24, July 29 2019



West(-)/East(+) (2500 ft/in)

SECTION DETAILS

Sec	MD	Inc	Azi	TVD	+N/-S	+E/-W	Dleg	TFace	VSec	Target
1	2423.0	6.85	205.83	2413.7	-150.4	-39.6	0.00	0.00	-149.8	
2	2523.0	6.85	205.83	2513.0	-161.2	-44.8	0.00	0.00	-160.4	
3	2592.6	7.24	194.90	2582.1	-169.1	-47.8	2.00	-79.37	-168.4	
4	6722.4	7.24	194.90	6679.0	-671.8	-181.5	0.00	0.00	-668.9	
5	7951.5	91.32	0.62	7482.0	55.8	-199.3	8.00	165.57	58.9	TPZ 2145'FNL & 880'FEL, Sec.18
6	7951.6	91.32	0.62	7482.0	55.9	-199.3	0.10	132.09	58.9	
7	10008.0	91.32	0.62	7434.6	2111.6	-176.9	0.00	0.00	2114.1	
8	10101.5	89.45	0.62	7434.0	2205.0	-175.9	2.00	-179.90	2207.5	Kugel 1I 2205 TGT
9	12396.7	89.45	0.62	7456.0	4500.0	-151.0	0.00	0.00	4501.8	Kugel 1I 4500 TGT
10	12439.5	90.31	0.62	7456.1	4542.8	-150.5	2.00	0.18	4544.5	
11	15455.8	90.31	0.62	7440.0	7558.9	-117.7	0.00	0.00	7559.8	BHL 10'FNL & 880'FEL, Sec.7

