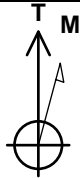


FINAL PLOT

Well Name: **Kugel 1B-18H-H267**
 Surface Location: Kugel Pad Sec.18-T2N-R67W
 North American Datum 1983, US State Plane 1983, Colorado Northern Zone
 Ground Elevation: 4954.0
 +N/-S +E/-W Northing Easting Latitude Longitude Slot
 0.0 0.0 1294290.53 3160349.63 40.139798 -104.926457
 Ensign 153 RKB - 23' WELL @ 4977.0ft (Ensign 153 RKB - 23')

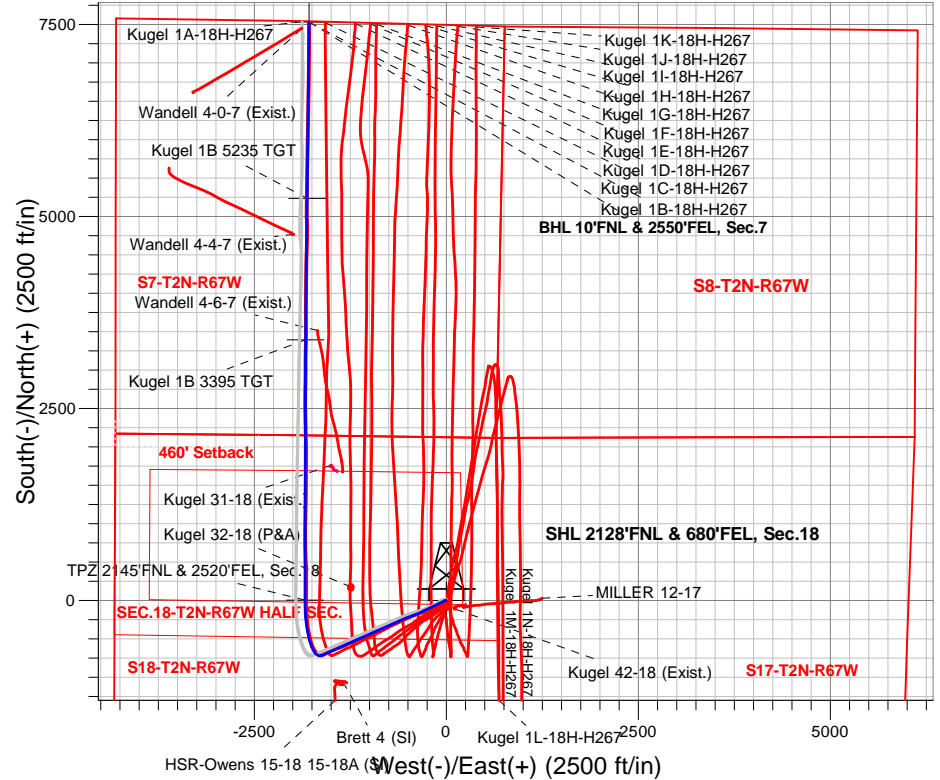
WELLBORE TARGET DETAILS

Name	TVD	+N/-S	+E/-W	Shape
SHL 2128'FNL & 680'FEL, Sec.18	1.0	0.0	0.0	Point
BHL 10'FNL & 2550'FEL, Sec.7	7306.0	7534.1	-1786.5	Point
Kugel 1B 5235 TGT	7320.0	5235.0	-1811.8	Point
Kugel 1B 3395 TGT	7321.0	3395.0	-1832.0	Point
TPZ 2145'FNL & 2520'FEL, Sec.18	7370.0	7.4	-1839.3	Point



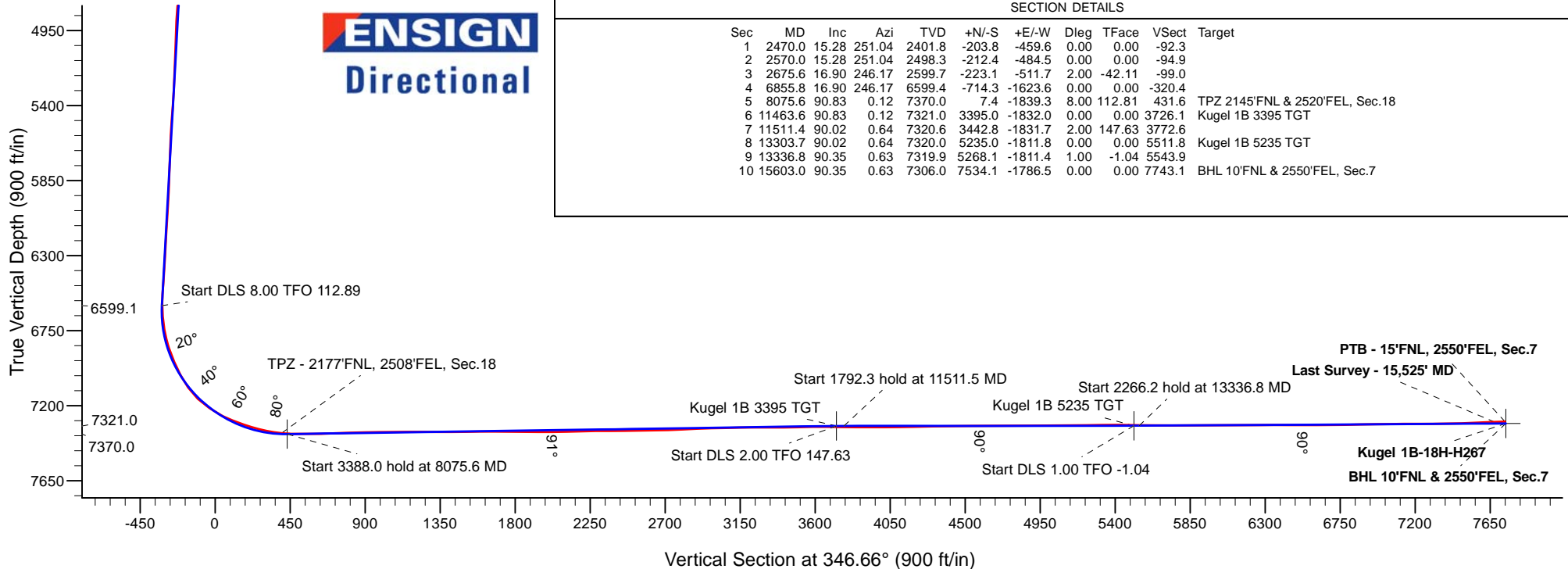
Azimuths to True North
 Magnetic North: 8.28°
 Magnetic Field
 Strength: 52016.2snT
 Dip Angle: 66.50°
 Date: 9/9/2019
 Model: HDGM

Kugel Pad Sec.18-T2N-R67W
Kugel 1B-18H-H267
Plan #7 (9-9-19)
8:41, September 23 2019



SECTION DETAILS

Sec	MD	Inc	Azi	TVD	+N/-S	+E/-W	Dleg	TFace	V Sect	Target
1	2470.0	15.28	251.04	2401.8	-203.8	-459.6	0.00	0.00	-92.3	
2	2570.0	15.28	251.04	2498.3	-212.4	-484.5	0.00	0.00	-94.9	
3	2675.6	16.90	246.17	2599.7	-223.1	-511.7	2.00	-42.11	-99.0	
4	6855.8	16.90	246.17	6599.4	-714.3	-1623.6	0.00	0.00	-320.4	
5	8075.6	90.83	0.12	7370.0	7.4	-1839.3	8.00	112.81	431.6	TPZ 2145'FNL & 2520'FEL, Sec.18
6	11463.6	90.83	0.12	7321.0	3395.0	-1832.0	0.00	0.00	3726.1	Kugel 1B 3395 TGT
7	11511.4	90.02	0.64	7320.6	3442.8	-1831.7	2.00	147.63	3772.6	
8	13303.7	90.02	0.64	7320.0	5235.0	-1811.8	0.00	0.00	5511.8	Kugel 1B 5235 TGT
9	13336.8	90.35	0.63	7319.9	5268.1	-1811.4	1.00	-1.04	5543.9	
10	15603.0	90.35	0.63	7306.0	7534.1	-1786.5	0.00	0.00	7743.1	BHL 10'FNL & 2550'FEL, Sec.7



Vertical Section at 346.66° (900 ft/in)