

T8N, R59W, 6th P.M.

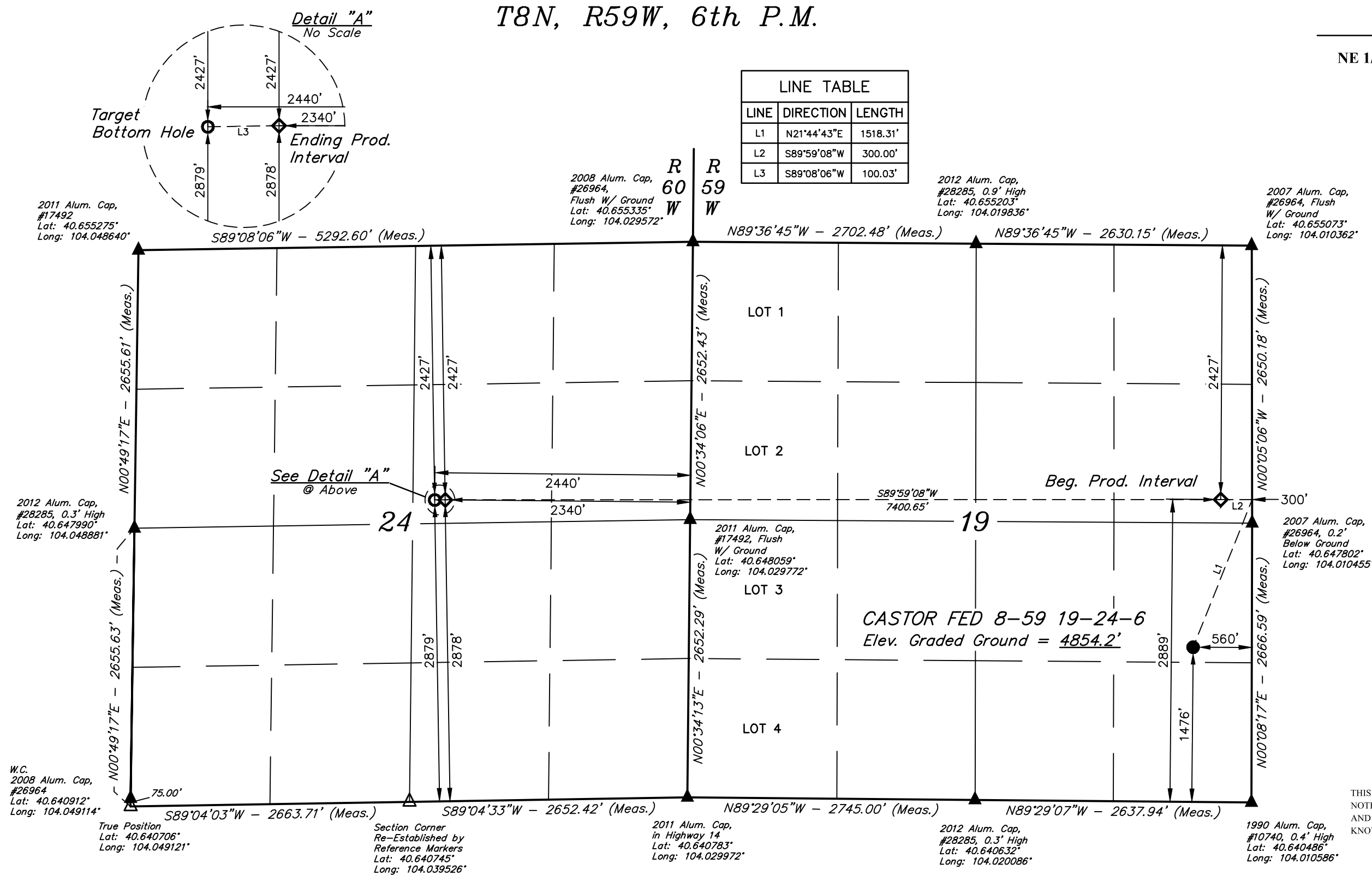
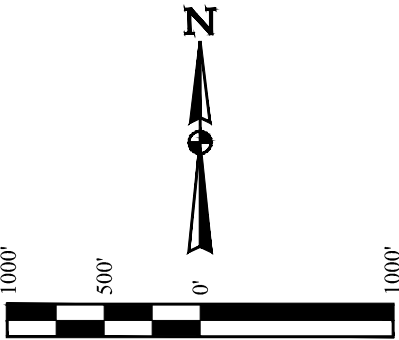
BISON OIL & GAS II

CASTOR FED 8-59 19-24-6  
NE 1/4 SE 1/4, SECTION 19, T8N, R59W, 6th P.M.  
WELD COUNTY, COLORADO

BASIS OF BEARINGS  
TRANSVERSE MERCATOR PROJECTION WITH  
A CENTRAL MERIDIAN OF W105°00'00".

BASIS OF ELEVATION  
OPUS SOLUTION GENERATED NAVD 88

LINE TABLE		
LINE	DIRECTION	LENGTH
L1	N21°44'43"E	1518.31'
L2	S89°59'08"W	300.00'
L3	S89°08'06"W	100.03'



NOTE:  
Distances referenced  
on plat to section lines  
are perpendicular.

LEGEND:

- = PROPOSED WELLHEAD.
- ◆ = PRODUCTION INTERVAL.
- = TARGET BOTTOM HOLE.
- ▲ = SECTION CORNERS LOCATED. (NAD 83)
- △ = SECTION CORNERS RE-ESTABLISHED.  
(Not Set on Ground.) (NAD 83)

SURFACE LOCATION 1476' FSL 560' FEL	BEG. PROD. INTERVAL 2427' FNL 2889' FSL 300' FEL	ENDING PROD. INTERVAL 2427' FNL 2878' FSL 2340' FEL	TARGET BOTTOM HOLE 2427' FNL 2879' FSL 2440' FEL
NAD 83 (SURFACE LOCATION)	NAD 83 (BEG. PROD. INTERVAL)	NAD 83 (ENDING PROD. INTERVAL)	NAD 83 (TARGET BOTTOM HOLE)
LATITUDE = 40°38'40.44" (40.644568°)	LATITUDE = 40°38'54.34" (40.648429°)	LATITUDE = 40°38'55.14" (40.648649°)	LATITUDE = 40°38'55.13" (40.648648°)
LONGITUDE = 104°00'45.11" (104.012530°)	LONGITUDE = 104°00'41.50" (104.011528°)	LONGITUDE = 104°02'17.47" (104.038187°)	LONGITUDE = 104°02'18.77" (104.038548°)
NAD 27 (SURFACE LOCATION)	NAD 27 (BEG. PROD. INTERVAL)	NAD 27 (ENDING PROD. INTERVAL)	NAD 27 (TARGET BOTTOM HOLE)
LATITUDE = 40°38'40.49" (40.644580°)	LATITUDE = 40°38'54.39" (40.648441°)	LATITUDE = 40°38'55.18" (40.648662°)	LATITUDE = 40°38'55.18" (40.648661°)
LONGITUDE = 104°00'43.29" (104.012025°)	LONGITUDE = 104°00'39.68" (104.011023°)	LONGITUDE = 104°02'15.66" (104.037682°)	LONGITUDE = 104°02'16.95" (104.038043°)
STATE PLANE NAD 83 (CO. NORTH)	STATE PLANE NAD 83 (CO. NORTH)	STATE PLANE NAD 83 (CO. NORTH)	STATE PLANE NAD 83 (CO. NORTH)
N: 1481120.32' E: 3412761.77'	N: 1482531.47' E: 3413016.36'	N: 1482488.57' E: 3405618.29'	N: 1482486.50' E: 3405518.31'
STATE PLANE NAD 27 (CO. NORTH)	STATE PLANE NAD 27 (CO. NORTH)	STATE PLANE NAD 27 (CO. NORTH)	STATE PLANE NAD 27 (CO. NORTH)
N: 481118.88' E: 2412912.84'	N: 482530.01' E: 2413167.42'	N: 482487.21' E: 2405769.13'	N: 482485.15' E: 2405669.15'

PDOP = 1.5

CERTIFICATE  
THIS IS TO CERTIFY THAT THE ABOVE PLAT WAS PREPARED FROM FIELD  
NOTES OF ACTUAL SURVEYS MADE BY ME OR UNDER MY SUPERVISION  
AND THAT THE SAME ARE TRUE AND CORRECT TO THE BEST OF MY  
KNOWLEDGE AND BELIEF.

RYAN WILLIAMS, K.M.  
REGISTERED LAND SURVEYOR  
REGISTRATION NO. 28285  
STATE OF COLORADO 09-13-19

REV: 3 09-13-19 C.IVIE (SL CHANGE)



UELS, LLC  
Corporate Office \* 85 South 200 East  
Vernal, UT 84078 \* (435) 789-1017

SURVEYED BY	RYAN WILLIAMS, K.M.	04-05-19	SCALE
DRAWN BY	C.IVIE	04-08-19	1" = 1000'

WELL LOCATION PLAT