



RECEIVED

SEP 05 1991

OGCC FORM 4
Rev. 8/89STATE OF COLORADO
OIL AND GAS CONSERVATION COMMISSION
DEPARTMENT OF NATURAL RESOURCES

COLO. OIL & GAS CONS. COMM.

SUBMIT ORIGINAL AND 1 COPY

FOR OFFICE USE ONLY			
ET	FE	UC	SE

SUNDRY NOTICES AND REPORTS ON WELLS

(Do not use this form for proposals to drill or to deepen or plug back to a different reservoir.
Use "APPLICATION FOR PERMIT—" for such proposals.)1. ☒ OIL WELL ☐ GAS WELL ☐ COALBED METHANE ☐ INJECTION WELL ☐ OTHER

2. NAME OF OPERATOR

Hondo Oil & Gas Company

3. ADDRESS OF OPERATOR

P. O. Box 2208

CITY STATE ZIP CODE

Roswell, NM 88202

4. LOCATION OF WELL (Report location clearly and in accordance with any State requirements.
See also space 17 below.)

At surface

At proposed prod. zone

750' FEL & 750' FSL

12. COUNTY

Routt

5. FEDERAL/INDIAN OR STATE LEASE NO.

6. PERMIT NO.

901169

7. API NO.

05 107 6172

8. WELL NAME

Zabel

9. WELL NUMBER

1

10. FIELD OR WILDCAT

Wildcat

11. QTR. QTR. SEC., T.R. AND MERIDIAN

SE/SE Sec 6, T6N, R85W

Check Appropriate Box To Indicate Nature of Notice, Report or Notification

13A. NOTICE OF INTENTION TO:

- ☒ PLUG AND ABANDON
- ☐ MULTIPLE COMPLETION
- ☐ COMMINGLE ZONES
- ☐ FRACTURE TREAT
- ☐ REPAIR WELL
- ☐ OTHER

13B. SUBSEQUENT REPORT OF:

- ☐ FINAL PLUG AND ABANDONMENT
(SUBMIT 3RD PARTY CEMENT VERIFICATION
AND JOB LOG)
- ☐ ABANDONED LOCATION (WELL NEVER DRILLED -
SITE MUST BE RESTORED WITHIN 6 MONTHS)
- ☐ REPAIRED WELL
- ☐ OTHER

*Use Form 5 - Well Completion or Recompletion Report and Log
for subsequent report of Multiple/Commingle Completions
and Recompletions

13C. NOTIFICATION OF:

- ☐ SHUT-IN, TEMPORARILY ABANDONED
(DATE _____)
(REQUIRED EVERY 6 MONTHS)
- ☐ PRODUCTION RESUMED
(DATE _____)
- ☐ LOCATION CHANGE (SUBMIT NEW PLAT)
- ☐ WELL NAME CHANGE
- ☐ OTHER

14. DESCRIBE PROPOSED OR COMPLETED OPERATIONS ON THIS FORM (Clearly state all pertinent details, and give pertinent dates, including estimated date of starting any proposed work. If well is directionally drilled, give subsurface locations and measured and true vertical depths for all markers and zones pertinent)

15. DATE OF WORK _____

Note attached sheets for casing data, survey information and formation tops.

Proposed procedure to P&A this well:

1. Set CIBP in 5-1/2" casing at 1800'. Dump 50' of cement on top of plug.
2. Perforate 5-1/2" at 415'. Run cement retainer set at 400' - squeeze perfs. with 100 sx cement, leave 35' on top.
3. Pump 50 sx cement down 13-3/8" - 9-5/8" annulus.
4. Cut off wellhead. Rehabilitate location.

16. I hereby certify that the foregoing is true and correct

SIGNED

TELEPHONE NO. (505)625-6731

NAME (PRINT)

B. J. Mahony

TITLE

Engineer

DATE

9/3/91

(This space for Federal or State office use)

APPROVED

TITLE

Sr. Engr.

DATE

12/11/91

CONDITIONS OF APPROVAL, IF ANY:



Hondo Oil & Gas Company

Calculation Sheet

Project

ZABEL# /

Item

CASING DESIGN

AFE No

Subject

Sheet

of

Prepared

Date

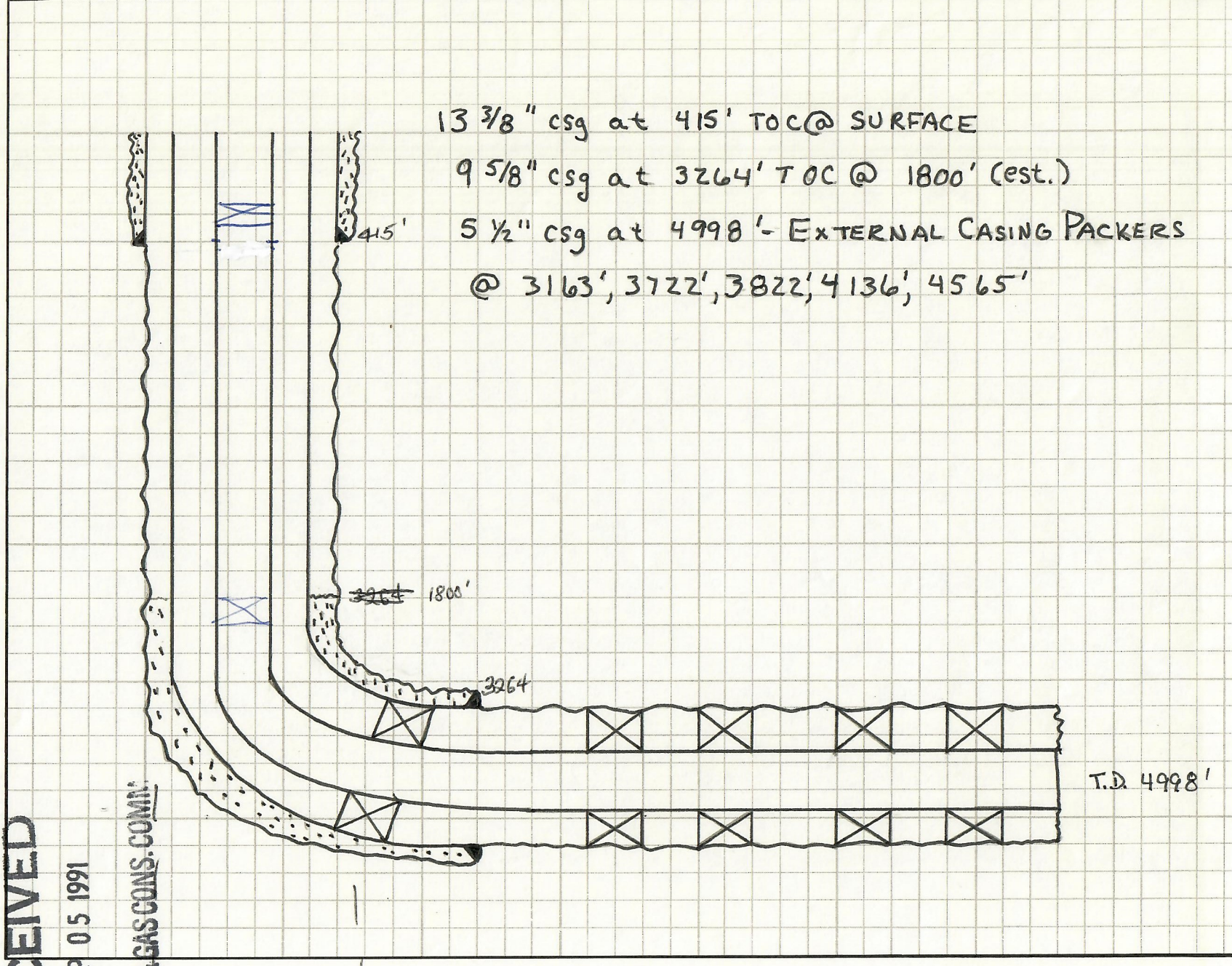
Checked

Date

RECEIVED

SEP 05 1991

COLO. OIL & GAS CONS. COMM.





Hondo Oil & Gas Company

Calculation Sheet

Project

ZABEL#1

Subject

Item CASING DESIGN

AFE No

Prepared

Sheet

of

Date

Checked

Date

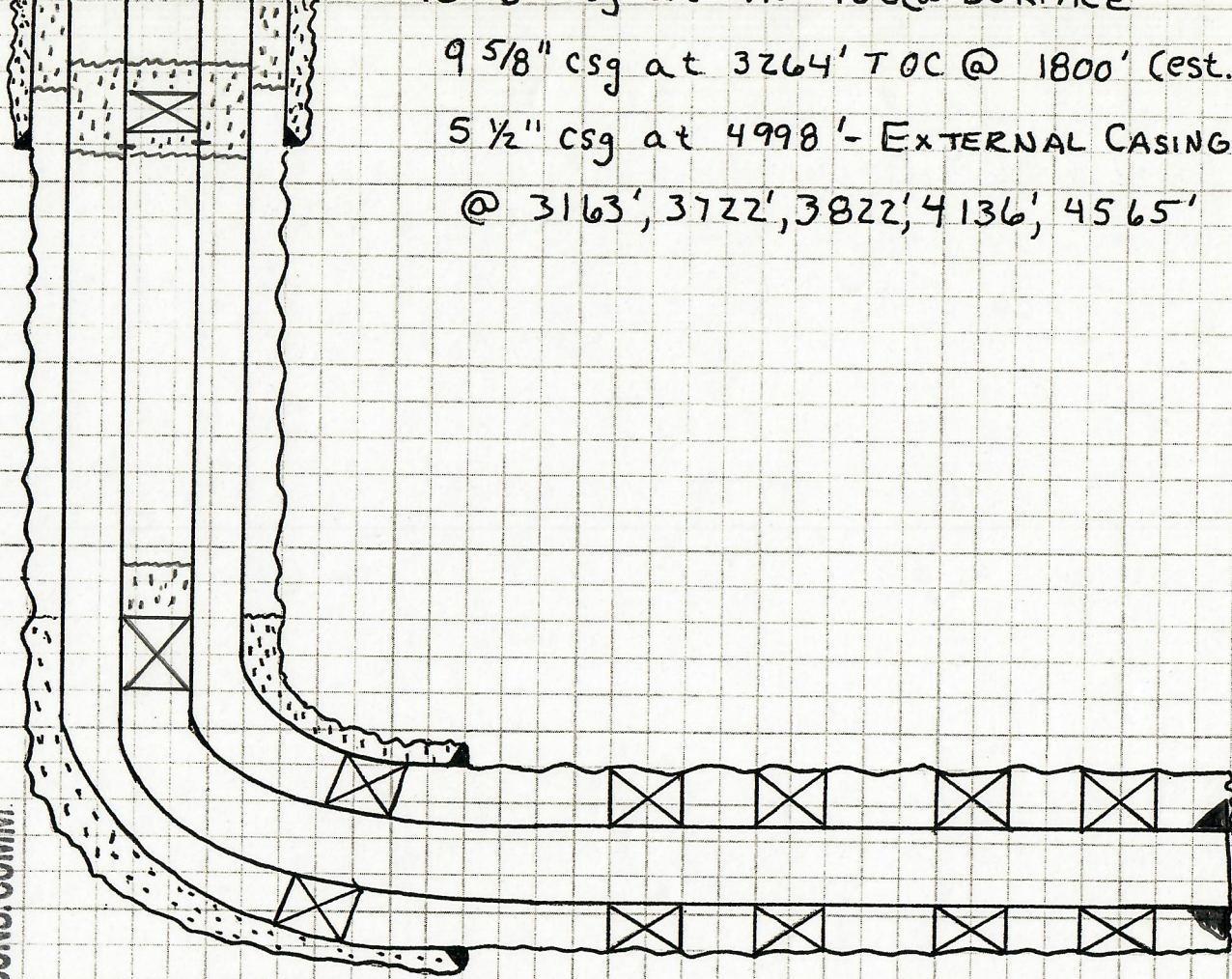
Date

RECEIVED

SEP 05 1991

PROPOSED P&A PROCEDURE

COLO. OIL & GAS CONS. COMM.



13 3/8" csg at 415' TOC@ SURFACE

9 5/8" csg at 3264' TOC @ 1800' (est.)

5 1/2" csg at 4998' - EXTERNAL CASING PACKERS
@ 3163', 3722', 3822', 4136', 4565'

T.D. 4998'

Smith International, Inc.

HONDO OIL & GAS COMPANY
 ZABEL #1
 SEC 6-T06N-R85W
 ROUTT COUNTY - COLORADO

RECEIVED

SEP 05 1991

File Name: HONDO1S

COLO.OIL & GAS CONS.COMM.

RECORD OF SURVEY
 Calculated by DATADRIL's CADDs System

Radius of Curvature Method
 All Angles are Decimal
 Vertical Section Plane: N 90.00 W

MEASURED DEPTH (FT)	INCL ANGLE (DEG)	D R I F T DIRECTION (DEG)	COURSE LENGTH (FT)	TOTAL VERTICAL DEPTH	T O T A L RECTANGULAR COORDINATES (FT)		VERTICAL SECTION (FT)	C L O S U R E DISTANCE DIRECTION (FT) (DEG)		DOGLEG SEVERITY (DEG/100')
1800.00	1.90	N 50.00 E	0.00	1798.60	27.60 N	50.90 E	-50.90	57.90	N 61.53 E	0.00
1834.00	3.50	N 77.50 W	34.00	1832.56	28.85 N	50.59 E	-50.59	58.24	N 60.30 E	14.39
1865.00	6.13	N 82.00 W	31.00	1863.45	29.32 N	48.03 E	-48.03	56.27	N 58.60 E	8.56
1894.00	9.13	N 83.00 W	29.00	1892.19	29.82 N	44.22 E	-44.22	53.33	N 56.00 E	10.35
1923.00	11.63	N 81.50 W	29.00	1920.71	30.52 N	39.04 E	-39.04	49.56	N 51.98 E	8.67
1960.00	15.25	N 80.50 W	37.00	1956.69	31.87 N	30.55 E	-30.55	44.14	N 43.79 E	9.80
1991.00	18.25	N 80.00 W	31.00	1986.37	33.38 N	21.74 E	-21.74	39.84	N 33.08 E	9.69
2022.00	21.63	N 80.50 W	31.00	2015.51	35.17 N	11.33 E	-11.33	36.95	N 17.85 E	10.92
2054.00	24.13	N 82.50 W	32.00	2044.99	37.01 N	.98 W	.98	37.02	N 1.51 W	8.18
2086.00	26.25	N 87.00 W	32.00	2073.95	38.26 N	14.54 W	14.54	40.93	N 20.81 W	8.92
2118.00	28.13	S 88.50 W	32.00	2102.41	38.45 N	29.15 W	29.15	48.25	N 37.17 W	8.70
2148.00	30.87	S 86.50 W	30.00	2128.52	37.80 N	43.91 W	43.91	57.94	N 49.27 W	9.70
2179.00	33.62	S 87.00 W	31.00	2154.73	36.87 N	60.42 W	60.42	70.78	N 58.61 W	8.91
2211.00	36.12	S 88.00 W	32.00	2180.99	36.07 N	78.70 W	78.70	86.57	N 65.38 W	8.01
2242.00	38.75	S 87.50 W	31.00	2205.60	35.33 N	97.52 W	97.52	103.73	N 70.09 W	8.54
2274.00	41.37	S 87.50 W	32.00	2230.09	34.43 N	118.10 W	118.10	123.01	N 73.75 W	8.19
2305.00	43.75	S 88.00 W	31.00	2252.92	33.61 N	139.05 W	139.05	143.05	N 76.41 W	7.75
2336.00	43.63	S 88.00 W	31.00	2275.34	32.86 N	160.45 W	160.45	163.78	N 78.43 W	.39
2367.00	43.13	S 88.50 W	31.00	2297.87	32.21 N	181.73 W	181.73	184.56	N 79.95 W	1.96
2398.00	42.75	S 88.00 W	31.00	2320.56	31.56 N	202.84 W	202.84	205.28	N 81.15 W	1.65
2428.00	42.88	S 87.50 W	30.00	2342.57	30.76 N	223.21 W	223.21	225.32	N 82.15 W	1.21

RECEIVED

SEP 05 1991

PAGE No. 2

DATADRIL

HONDO OIL & GAS COMPANY
ZABEL #1

COLO. OIL & GAS CONS. COMM

SEC 6-T06N-R85W

ROUTT COUNTY - COLORADO

MEASURED DEPTH (FT)	INCL ANGLE (DEG)	D R I F T DIRECTION (DEG)	COURSE LENGTH (FT)	TOTAL VERTICAL DEPTH	T O T A L RECTANGULAR COORDINATES (FT)		VERTICAL SECTION (FT)	C L O S U R E DISTANCE DIRECTION (FT) (DEG)		DOGLEG SEVERITY (DEG/100')
2460.00	42.88	S 86.50 W	32.00	2366.02	29.62 N	244.96 W	244.96	246.74	N 83.10 W	2.13
2492.00	43.25	S 86.00 W	32.00	2389.40	28.20 N	266.76 W	266.76	268.25	N 83.97 W	1.57
2523.00	42.75	S 86.00 W	31.00	2412.07	26.72 N	287.85 W	287.85	289.09	N 84.70 W	1.61
2555.00	42.75	S 86.00 W	32.00	2435.57	25.21 N	309.52 W	309.52	310.54	N 85.34 W	0.00
2587.00	42.25	S 86.00 W	32.00	2459.16	23.70 N	331.08 W	331.08	331.93	N 85.91 W	1.56
2617.00	42.38	S 87.50 W	30.00	2481.34	22.55 N	351.25 W	351.25	351.97	N 86.33 W	3.39
2649.00	42.63	S 86.00 W	32.00	2504.93	21.33 N	372.83 W	372.83	373.44	N 86.73 W	3.26
2673.00	42.88	S 85.50 W	24.00	2522.56	20.12 N	389.08 W	389.08	389.60	N 87.04 W	1.76
2710.00	43.38	S 85.50 W	37.00	2549.56	18.13 N	414.30 W	414.30	414.70	N 87.49 W	1.35
2740.00	45.25	S 86.50 W	30.00	2571.02	16.67 N	435.20 W	435.20	435.52	N 87.81 W	6.65
2771.00	47.38	S 88.50 W	31.00	2592.43	15.69 N	457.60 W	457.60	457.87	N 88.04 W	8.30
2803.00	50.00	N 90.00 W	32.00	2613.56	15.38 N	481.63 W	481.63	481.88	N 88.17 W	8.91
2834.00	52.38	N 89.50 W	31.00	2632.98	15.49 N	505.78 W	505.78	506.02	N 88.25 W	7.78
2866.00	55.63	N 90.00 W	32.00	2651.79	15.60 N	531.67 W	531.67	531.90	N 88.32 W	10.23
2897.00	58.63	S 89.50 W	31.00	2668.61	15.49 N	557.70 W	557.70	557.92	N 88.41 W	9.77
2929.00	61.88	S 89.00 W	32.00	2684.48	15.12 N	585.48 W	585.48	585.68	N 88.52 W	10.25
2960.00	65.13	S 89.00 W	31.00	2698.31	14.64 N	613.22 W	613.22	613.39	N 88.63 W	10.48
2992.00	68.38	S 89.00 W	32.00	2710.94	14.12 N	642.61 W	642.61	642.77	N 88.74 W	10.16
3023.00	71.38	S 89.50 W	31.00	2721.60	13.74 N	671.71 W	671.71	671.85	N 88.83 W	9.80
3054.00	74.13	N 89.50 W	31.00	2730.79	13.74 N	701.32 W	701.32	701.45	N 88.88 W	9.39
3084.00	76.75	N 89.50 W	30.00	2738.33	14.00 N	730.35 W	730.35	730.48	N 88.90 W	8.73
3115.00	79.88	N 90.00 W	31.00	2744.61	14.13 N	760.70 W	760.70	760.83	N 88.94 W	10.22
3146.00	80.13	N 90.00 W	31.00	2749.99	14.13 N	791.23 W	791.23	791.36	N 88.98 W	.81
3178.00	79.25	N 89.50 W	32.00	2755.72	14.27 N	822.72 W	822.72	822.84	N 89.01 W	3.15
3300.00	77.13	N 89.00 W	122.00	2780.69	15.83 N	942.12 W	942.12	942.25	N 89.04 W	1.78
3330.00	77.13	N 90.00 W	30.00	2787.37	16.08 N	971.36 W	971.36	971.49	N 89.05 W	3.25
3361.00	77.25	S 89.50 W	31.00	2794.24	15.95 N	1001.59 W	1001.59	1001.72	N 89.09 W	1.62
3391.00	77.38	S 89.00 W	30.00	2800.83	15.57 N	1030.85 W	1030.85	1030.97	N 89.13 W	1.68
3423.00	77.63	S 89.50 W	32.00	2807.75	15.16 N	1062.09 W	1062.09	1062.20	N 89.18 W	1.71
3455.00	77.88	S 89.50 W	32.00	2814.54	14.89 N	1093.36 W	1093.36	1093.47	N 89.22 W	.78
3485.00	78.00	S 89.50 W	30.00	2820.81	14.63 N	1122.70 W	1122.70	1122.80	N 89.25 W	.40
3516.00	78.13	S 89.50 W	31.00	2827.22	14.37 N	1153.03 W	1153.03	1153.12	N 89.29 W	.42
3547.00	78.25	S 89.50 W	31.00	2833.56	14.10 N	1183.37 W	1183.37	1183.46	N 89.32 W	.39

RECEIVED

SEP 05 1991

PAGE No. 3

DATADRIL

COLO. OIL & GAS CONS. COMM

HONDO OIL & GAS COMPANY
ZABEL #1

SEC 6-T06N-R85W
ROUTT COUNTY - COLORADO

MEASURED	INCL	D R I F T	COURSE	TOTAL	T O T A L		VERTICAL	C L O S U R E		DOGLEG
DEPTH	ANGLE	DIRECTION	LENGTH	VERTICAL	RECTANGULAR COORDINATES		SECTION	DISTANCE	DIRECTION	SEVERITY
(FT)	(DEG)	(DEG)	(FT)	DEPTH	(FT)		(FT)	(FT)	(DEG)	(DEG/100')
3578.00	78.25	S 89.50 W	31.00	2839.88	13.84 N	1213.72 W	1213.72	1213.80	N 89.35 W	0.00
3609.00	78.00	S 89.50 W	31.00	2846.26	13.57 N	1244.06 W	1244.06	1244.13	N 89.37 W	.81
3641.00	78.00	S 89.00 W	32.00	2852.91	13.16 N	1275.35 W	1275.35	1275.42	N 89.41 W	1.53
3673.00	77.88	S 89.50 W	32.00	2859.59	12.75 N	1306.65 W	1306.65	1306.71	N 89.44 W	1.57
3704.00	77.88	S 89.50 W	31.00	2866.10	12.49 N	1336.95 W	1336.95	1337.01	N 89.46 W	0.00
3736.00	77.75	N 90.00 W	32.00	2872.86	12.35 N	1368.23 W	1368.23	1368.29	N 89.48 W	1.58
3768.00	77.63	N 90.00 W	32.00	2879.68	12.35 N	1399.50 W	1399.50	1399.55	N 89.49 W	.37
3800.00	77.38	N 89.50 W	32.00	2886.60	12.49 N	1430.74 W	1430.74	1430.79	N 89.50 W	1.71
3830.00	76.88	N 89.50 W	30.00	2893.29	12.74 N	1459.98 W	1459.98	1460.04	N 89.50 W	1.67
3861.00	76.88	N 89.50 W	31.00	2900.32	13.01 N	1490.17 W	1490.17	1490.23	N 89.50 W	0.00
3892.00	77.00	N 89.00 W	31.00	2907.33	13.40 N	1520.37 W	1520.37	1520.43	N 89.49 W	1.62
3923.00	76.63	N 89.00 W	31.00	2914.40	13.93 N	1550.55 W	1550.55	1550.61	N 89.49 W	1.19
3956.00	76.63	N 89.00 W	33.00	2922.03	14.49 N	1582.65 W	1582.65	1582.71	N 89.48 W	0.00
3988.00	76.75	N 89.00 W	32.00	2929.40	15.03 N	1613.78 W	1613.78	1613.85	N 89.47 W	.37
4018.00	76.88	N 89.00 W	30.00	2936.24	15.54 N	1642.99 W	1642.99	1643.06	N 89.46 W	.43
4049.00	76.63	N 88.50 W	31.00	2943.34	16.20 N	1673.16 W	1673.16	1673.23	N 89.45 W	1.77
4080.00	76.25	N 88.00 W	31.00	2950.61	17.12 N	1703.28 W	1703.28	1703.36	N 89.42 W	1.99
4111.00	76.25	N 88.50 W	31.00	2957.98	18.04 N	1733.37 W	1733.37	1733.47	N 89.40 W	1.57
4143.00	76.00	N 88.00 W	32.00	2965.65	18.99 N	1764.43 W	1764.43	1764.53	N 89.38 W	1.71
4173.00	75.88	N 87.50 W	30.00	2972.94	20.13 N	1793.51 W	1793.51	1793.62	N 89.36 W	1.67
4205.00	76.00	N 87.50 W	32.00	2980.71	21.49 N	1824.52 W	1824.52	1824.64	N 89.33 W	.37
4236.00	76.13	N 87.50 W	31.00	2988.18	22.80 N	1854.58 W	1854.58	1854.72	N 89.30 W	.42
4267.00	76.25	N 87.50 W	31.00	2995.58	24.11 N	1884.65 W	1884.65	1884.81	N 89.27 W	.39
4299.00	76.50	N 87.50 W	32.00	3003.12	25.47 N	1915.72 W	1915.72	1915.89	N 89.24 W	.78
4331.00	76.38	N 87.50 W	32.00	3010.62	26.83 N	1946.80 W	1946.80	1946.98	N 89.21 W	.38
4360.00	75.88	N 87.00 W	29.00	3017.57	28.18 N	1974.92 W	1974.92	1975.12	N 89.18 W	2.40
4391.00	75.25	N 87.00 W	31.00	3025.30	29.75 N	2004.90 W	2004.90	2005.12	N 89.15 W	2.03
4423.00	75.00	N 87.00 W	32.00	3033.51	31.37 N	2035.79 W	2035.79	2036.03	N 89.12 W	.78
4453.00	74.25	N 87.00 W	30.00	3041.47	32.88 N	2064.67 W	2064.67	2064.93	N 89.09 W	2.50
4485.00	73.63	N 86.50 W	32.00	3050.32	34.62 N	2095.37 W	2095.37	2095.66	N 89.05 W	2.45
4514.00	73.25	N 86.50 W	29.00	3058.59	36.32 N	2123.12 W	2123.12	2123.43	N 89.02 W	1.31
4545.00	73.13	N 86.50 W	31.00	3067.55	38.13 N	2152.74 W	2152.74	2153.08	N 88.99 W	.39
4580.00	72.38	N 86.00 W	35.00	3077.93	40.32 N	2186.09 W	2186.09	2186.47	N 88.94 W	2.54

DATADRIL

HONDO OIL & GAS COMPANY
ZABEL #1

SEC 6-T06N-R85W
ROUTT COUNTY - COLORADO

MEASURED DEPTH (FT)	INCL ANGLE (DEG)	D R I F T DIRECTION (DEG)	COURSE LENGTH (FT)	TOTAL VERTICAL DEPTH	T O T A L RECTANGULAR COORDINATES (FT)		VERTICAL SECTION (FT)	C L O S U R E DISTANCE DIRECTION (FT) (DEG)		DOGLEG SEVERITY (DEG/100')
4612.00	71.00	N 86.00 W	32.00	3087.98	42.44 N	2216.40 W	2216.40	2216.81	N 88.90 W	4.31
4643.00	69.25	N 86.00 W	31.00	3098.52	44.47 N	2245.48 W	2245.48	2245.92	N 88.87 W	5.65
4674.00	68.38	N 86.00 W	31.00	3109.72	46.49 N	2274.32 W	2274.32	2274.79	N 88.83 W	2.81
4706.00	67.38	N 85.50 W	32.00	3121.77	48.68 N	2303.88 W	2303.88	2304.39	N 88.79 W	3.44
4737.00	66.63	N 86.00 W	31.00	3133.88	50.80 N	2332.34 W	2332.34	2332.89	N 88.75 W	2.84
4768.00	66.75	N 86.00 W	31.00	3146.15	52.78 N	2360.74 W	2360.74	2361.33	N 88.72 W	.39
4798.00	67.00	N 86.00 W	30.00	3157.93	54.71 N	2388.26 W	2388.26	2388.88	N 88.69 W	.83
4828.00	66.50	N 85.50 W	30.00	3169.77	56.75 N	2415.75 W	2415.75	2416.41	N 88.65 W	2.26
4860.00	64.75	N 85.00 W	32.00	3182.98	59.17 N	2444.79 W	2444.79	2445.51	N 88.61 W	5.65
4891.00	63.88	N 85.00 W	31.00	3196.41	61.60 N	2472.62 W	2472.62	2473.39	N 88.57 W	2.81
4922.00	63.63	N 84.50 W	31.00	3210.12	64.14 N	2500.31 W	2500.31	2501.13	N 88.53 W	1.66
4998.00	63.02	N 82.89 W	76.00	3244.24	71.60 N	2567.81 W	2567.81	2568.81	N 88.40 W	2.06

BOTTOM HOLE CLOSURE: 2568.81 Feet at N 88.40 Degrees W

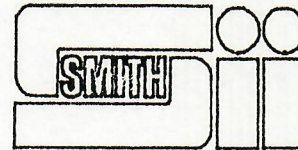
RECEIVED

SEP 05 1991

COLO.OIL & GAS CONS.COMM

HONDO OIL & GAS COMPANY
ZABEL #1
SEC 6-T06N-R85W
ROUTT COUNTY - COLORADO

3 Jan 1991 @ 14:34



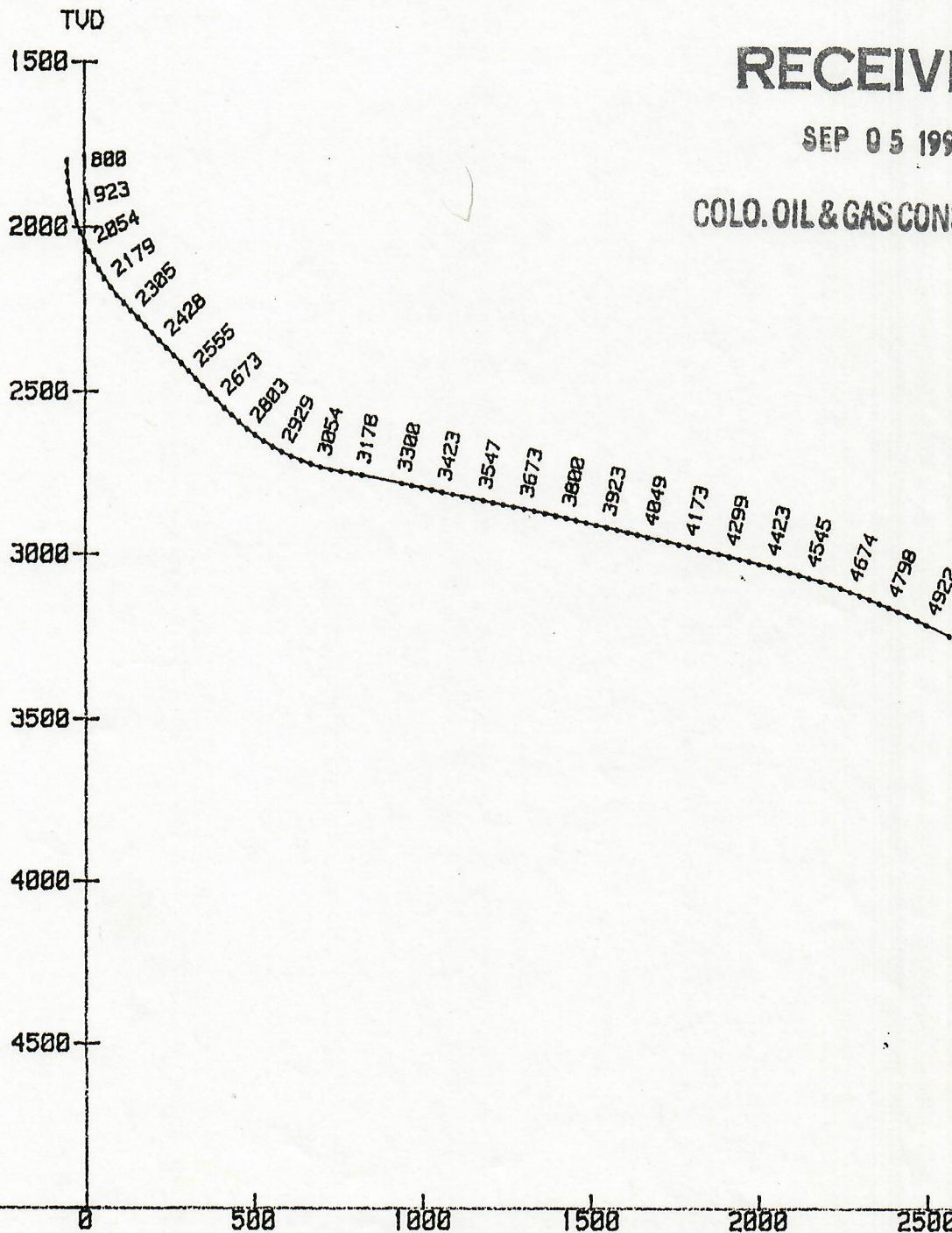
SCALE: 500 FEET/INCH

VERTICAL PLOT

RECEIVED

SEP 05 1991

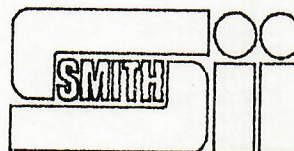
COLO. OIL & GAS CONS. COMM.



VERTICAL SECTION
SECTION PLANE: N 90.00 W

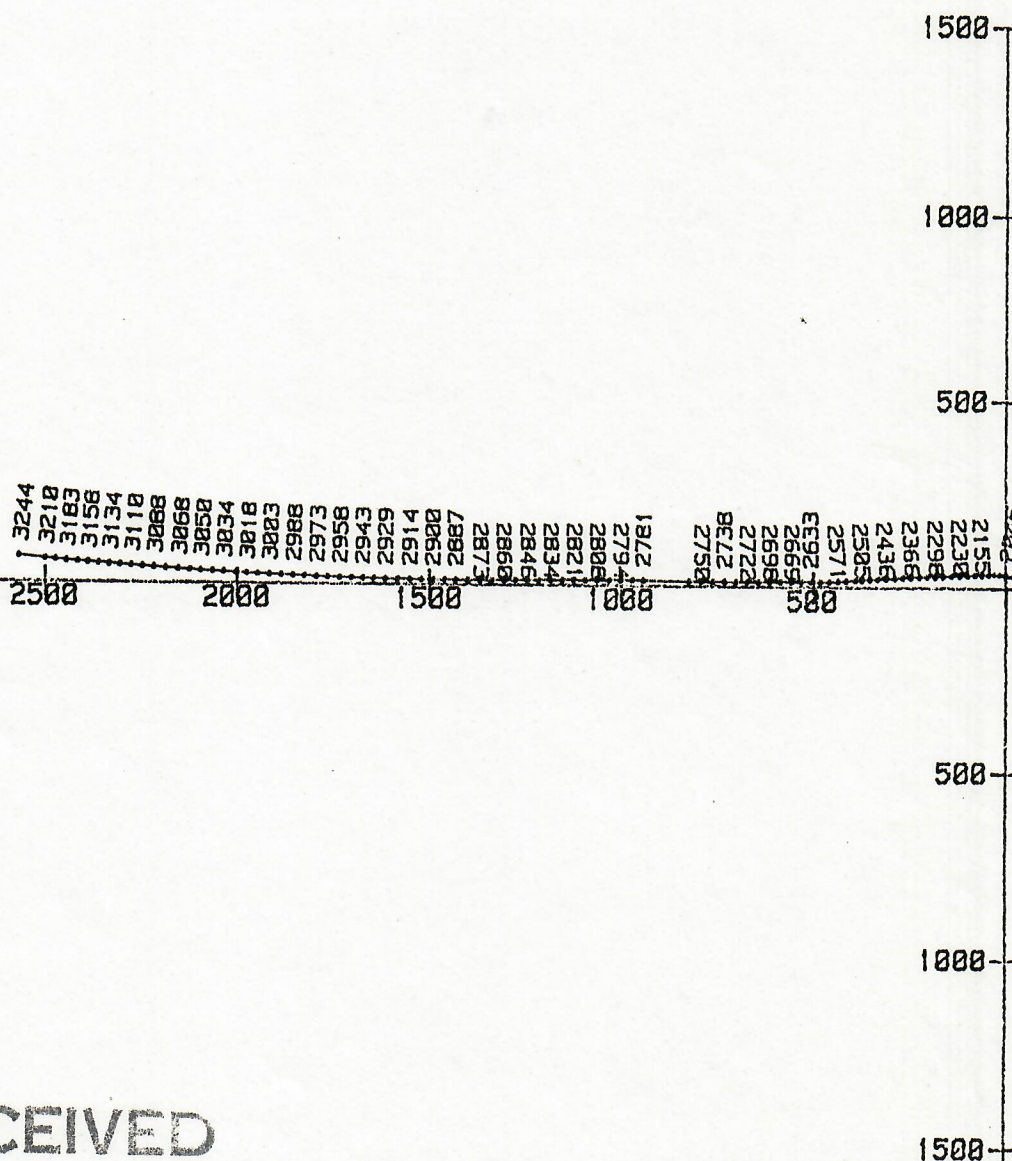
BHL: 2569 FEET
@ N 88.40 W
TVD: 3244 FEET
MD: 4998 FEET

3 Jan 1991 @ 14:30



SCALE: 500 FEET/INCH

BHL: 2569 FEET
@ N 88.40 W
TVD: 3244 FEET
MD: 4998 FEET



RECEIVED

SEP 05 1991

COLO. OIL & GAS CONS. COMM.

 FORMATION TOPS

Pilot Hole

FORMATION	PROG	ESTIMATED	E-LOG	DATUM
Transition	--	1815	1844	+4797
Buck Peak Kn	1622	1955	1952	+4689
Tow Ck Mbr	2172	2400	2362	+4279
Wolf Mtn Mbr	2452	2670	2656	+3985
Third Bench	2772	--	3048	+3593
Carlile	2896	3200	3188	+3453
Frontier SS	3211	3630	3604	+3037
Repeat Kf1	--	3820	3796	+2845
Mowry	3531	4240	4250	+2391
Dakota Slst	--	4515	4504	+2137
Dakota SS	3741	--	never contacted	

SIDETRACK

Buck Peak Kn1	--	1960 smp1	(1957TVD)	+4684
Tow Creek	2215	2515 smp1	(2410TVD)	+4231
Wolf Mtn	2905	3125 smp1	(2747TVD)	+3894
Base Wolf Mtn	--	3800 smp1	(2886TVD)	+3755

RECEIVED

SEP 05 1991

COLO.OIL & GAS CONS.COMM.