

LEGEND:

- = PROPOSED WELLHEAD.
- ◆ = ENTRY POINT.
- = BTM PERF.
- = TARGET BOTTOM HOLE.
- ▲ = SECTION CORNERS LOCATED. (NAD 83)
- △ = SECTION CORNERS RE-ESTABLISHED. (Not Set on Ground.) (NAD 83)

NOTE:

Distances referenced on plat to section lines are perpendicular.

NAD 83 (SURFACE LOCATION)
LATITUDE = 39°58'30.49" (39.975135°)
LONGITUDE = 104°57'55.88" (104.965521°)
NAD 27 (SURFACE LOCATION)
LATITUDE = 39°58'30.54" (39.975150°)
LONGITUDE = 104°57'53.95" (104.964987°)
NAD 83 (ENTRY POINT)
LATITUDE = 39°58'14.74" (39.970761°)
LONGITUDE = 104°57'55.28" (104.965357°)
NAD 27 (ENTRY POINT)
LATITUDE = 39°58'14.79" (39.970776°)
LONGITUDE = 104°57'53.36" (104.964822°)
NAD 83 (BTM PERF)
LATITUDE = 39°55'47.12" (39.929756°)
LONGITUDE = 104°57'53.95" (104.964986°)
NAD 27 (BTM PERF)
LATITUDE = 39°55'47.17" (39.929771°)
LONGITUDE = 104°57'52.03" (104.964452°)
NAD 83 (TARGET BOTTOM HOLE)
LATITUDE = 39°55'46.13" (39.929481°)
LONGITUDE = 104°57'53.94" (104.964982°)
NAD 27 (TARGET BOTTOM HOLE)
LATITUDE = 39°55'46.19" (39.929496°)
LONGITUDE = 104°57'52.01" (104.964448°)

PDOP = 1.2

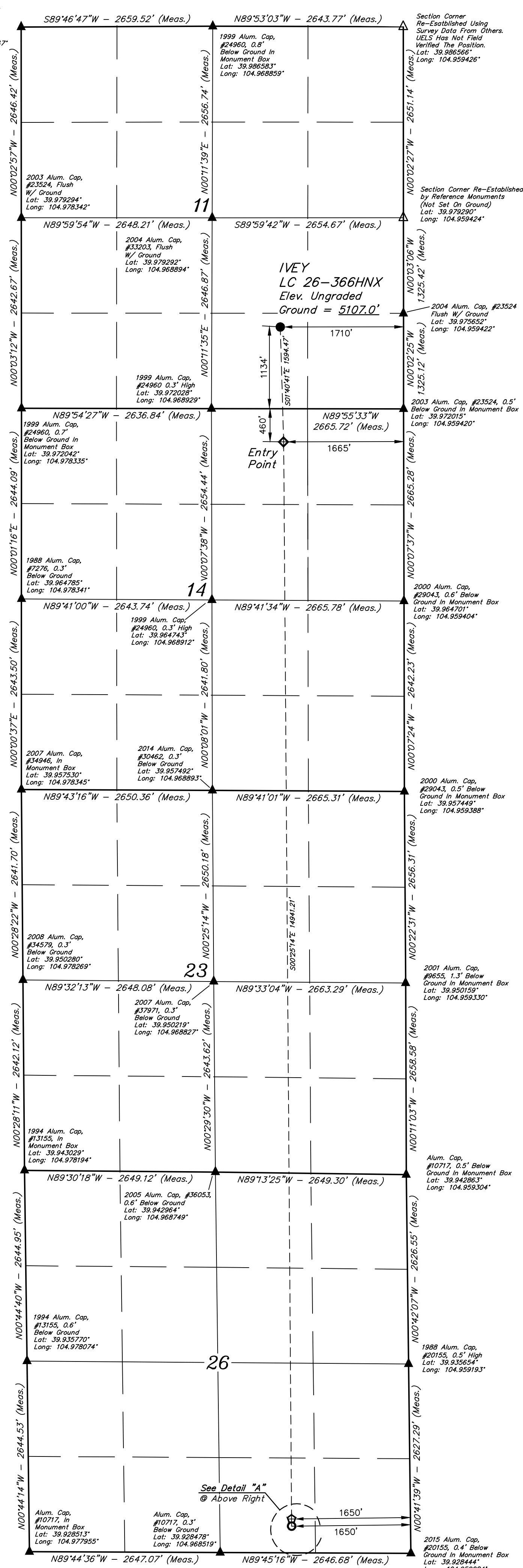
BASIS OF BEARINGS
BASIS OF BEARINGS IS A TRANSVERSE MERCATOR
PROJECTION WITH A CENTRAL MERIDIAN OF W105°00'00"

BASIS OF ELEVATION
OPUS SOLUTION GENERATED NAVD88



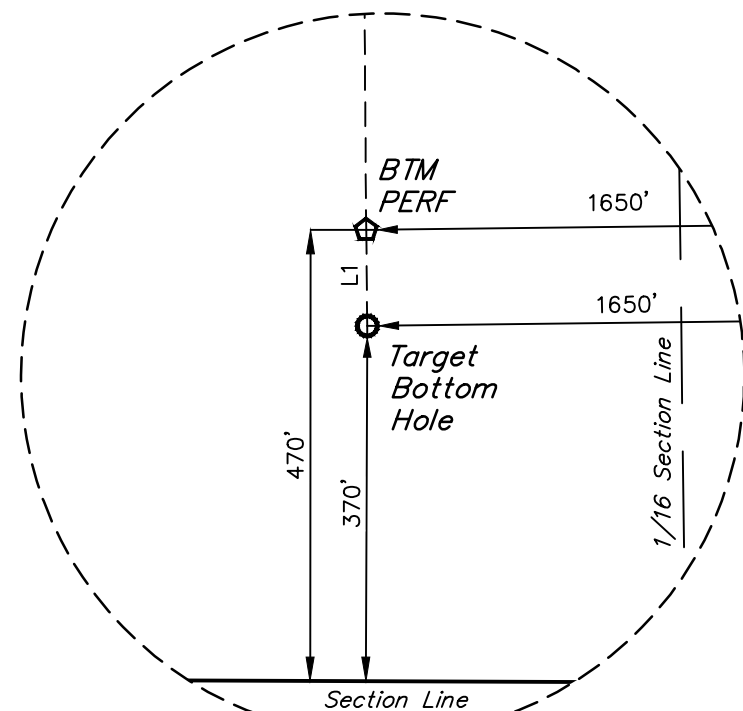
UELS, LLC
Corporate Office * 85 South 200 East
Vernal, UT 84078 * (435) 789-1017

2007 Alum. Cap,
#34977, 0.3'
Below Ground In
Monument Box
Lat: 39.986557°
Long: 104.978347°



T1S, R68W, 6th P.M.

LINE TABLE		
LINE	DIRECTION	LENGTH
L1	S00°41'39"E	100.01'



Detail "A"
No Scale

CERTIFICATE OF REGISTRATION
THIS IS TO CERTIFY THAT THE ABOVE DESCRIBED SURVEY WAS PREPARED BY THE UNDERSIGNED, A LICENSED LAND SURVEYOR, IN ACCORDANCE WITH THE RULES AND REGULATIONS OF THE BOARD OF LAND SURVEYORS, STATE OF COLORADO, AND THAT THE SAME ARE TRUE AND CORRECT TO THE BEST OF MY KNOWLEDGE AND BELIEF.

REGISTERED LAND SURVEYOR
RICK J. ADAMS, NO. 38385
STATE OF COLORADO
SURVEYING

REV: 2 07-24-19 T.A. (SL CHANGE)

GREAT WESTERN OPERATING COMPANY

IVEY LC 26-366HNX
SW 1/4 SE 1/4, SECTION 11, T1S, R68W, 6th P.M.
ADAMS COUNTY, COLORADO

SURVEYED BY	RYAN WILLIAMS, J.C.	06-08-18	SCALE
DRAWN BY	B.L.B.	06-28-18	1" = 1000'
WELL LOCATION PLAT			