

LEGEND:

- = PROPOSED WELLHEAD.  
◇ = ENTRY POINT.  
○ = BTM PERF.  
○ = TARGET BOTTOM HOLE.  
▲ = SECTION CORNERS LOCATED. (NAD 83)  
△ = SECTION CORNERS RE-ESTABLISHED. (Not Set on Ground.) (NAD 83)

NOTE:

Distances referenced on plat to section lines are perpendicular.

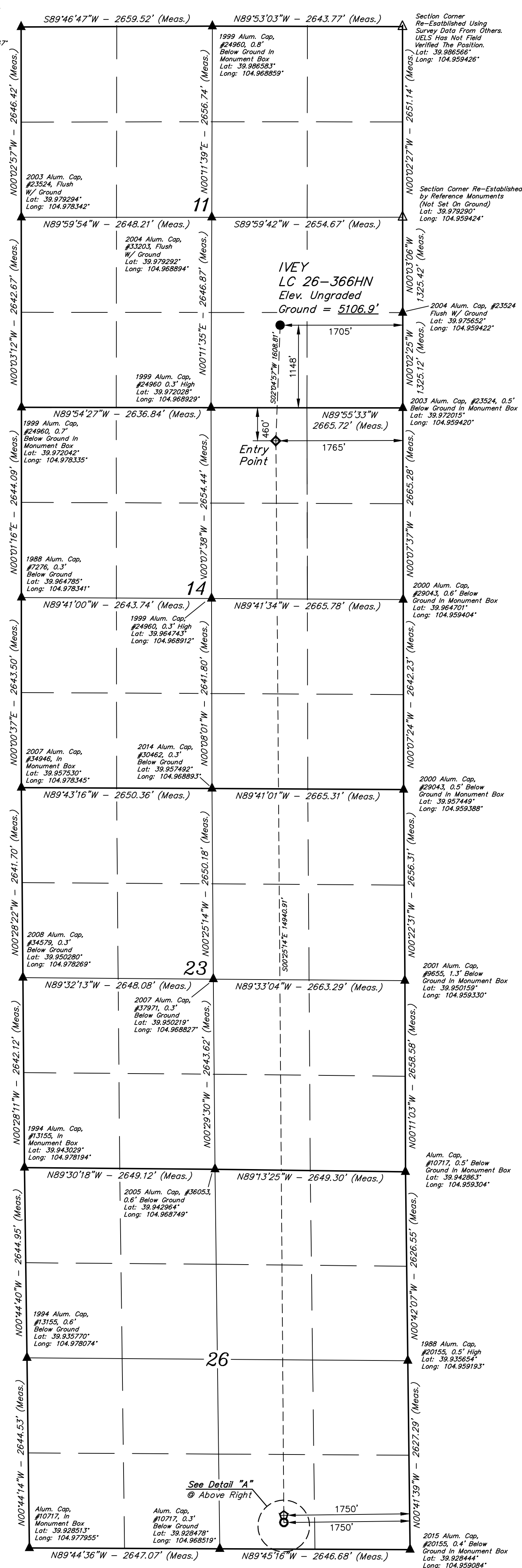
NAD 83 (SURFACE LOCATION)
LATITUDE = 39°58'30.62" (39.975174°)
LONGITUDE = 104°57'55.81" (104.965503°)
NAD 27 (SURFACE LOCATION)
LATITUDE = 39°58'30.68" (39.975189°)
LONGITUDE = 104°57'53.89" (104.964968°)
NAD 83 (ENTRY POINT)
LATITUDE = 39°58'14.74" (39.970761°)
LONGITUDE = 104°57'56.57" (104.965713°)
NAD 27 (ENTRY POINT)
LATITUDE = 39°58'14.80" (39.970777°)
LONGITUDE = 104°57'54.64" (104.965179°)
NAD 83 (BTM PERF)
LATITUDE = 39°55'47.13" (39.929757°)
LONGITUDE = 104°57'55.23" (104.965343°)
NAD 27 (BTM PERF)
LATITUDE = 39°55'47.18" (39.929772°)
LONGITUDE = 104°57'53.31" (104.964808°)
NAD 83 (TARGET BOTTOM HOLE)
LATITUDE = 39°55'46.14" (39.929483°)
LONGITUDE = 104°57'55.22" (104.965339°)
NAD 27 (TARGET BOTTOM HOLE)
LATITUDE = 39°55'46.19" (39.929498°)
LONGITUDE = 104°57'53.29" (104.964804°)

PDOP = 1.2



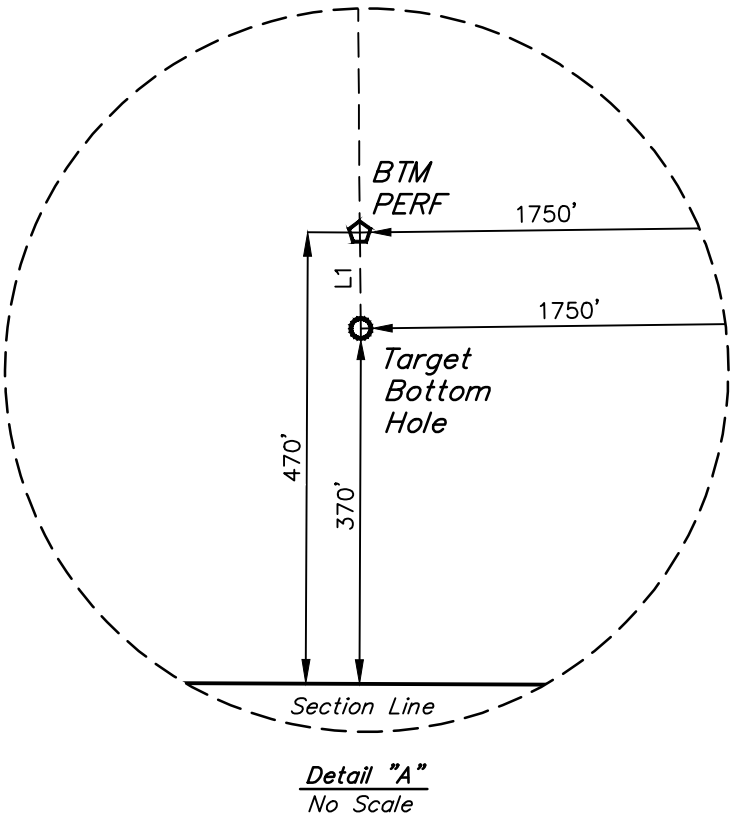
UELS, LLC  
Corporate Office \* 85 South 200 East  
Vernal, UT 84078 \* (435) 789-1017

2007 Alum. Cap,  
#34977, 0.3'  
Below Ground In  
Monument Box  
Lat: 39.986557°  
Long: 104.978347°



T1S, R68W, 6th P.M.

LINE TABLE		
LINE	DIRECTION	LENGTH
L1	S00°41'39"E	100.01'



CERTIFICATE OF RECORD  
THIS IS TO CERTIFY THAT THE ABOVE IS A TRUE AND CORRECT COPY OF THE ORIGINAL SURVEY PLAT AND THAT THE SAME ARE TRUE AND CORRECT TO THE BEST OF MY KNOWLEDGE AND BELIEF.



REV: 2 07-24-19 T.A. (ENTRY POINT CHANGE)

GREAT WESTERN OPERATING COMPANY

IVEY LC 26-366HN  
SW 1/4 SE 1/4, SECTION 11, T1S, R68W, 6th P.M.  
ADAMS COUNTY, COLORADO

SURVEYED BY	RYAN WILLIAMS, J.C.	06-08-18	SCALE
DRAWN BY	B.L.B.	06-28-18	1" = 1000'

WELL LOCATION PLAT