



00224064

R81 W

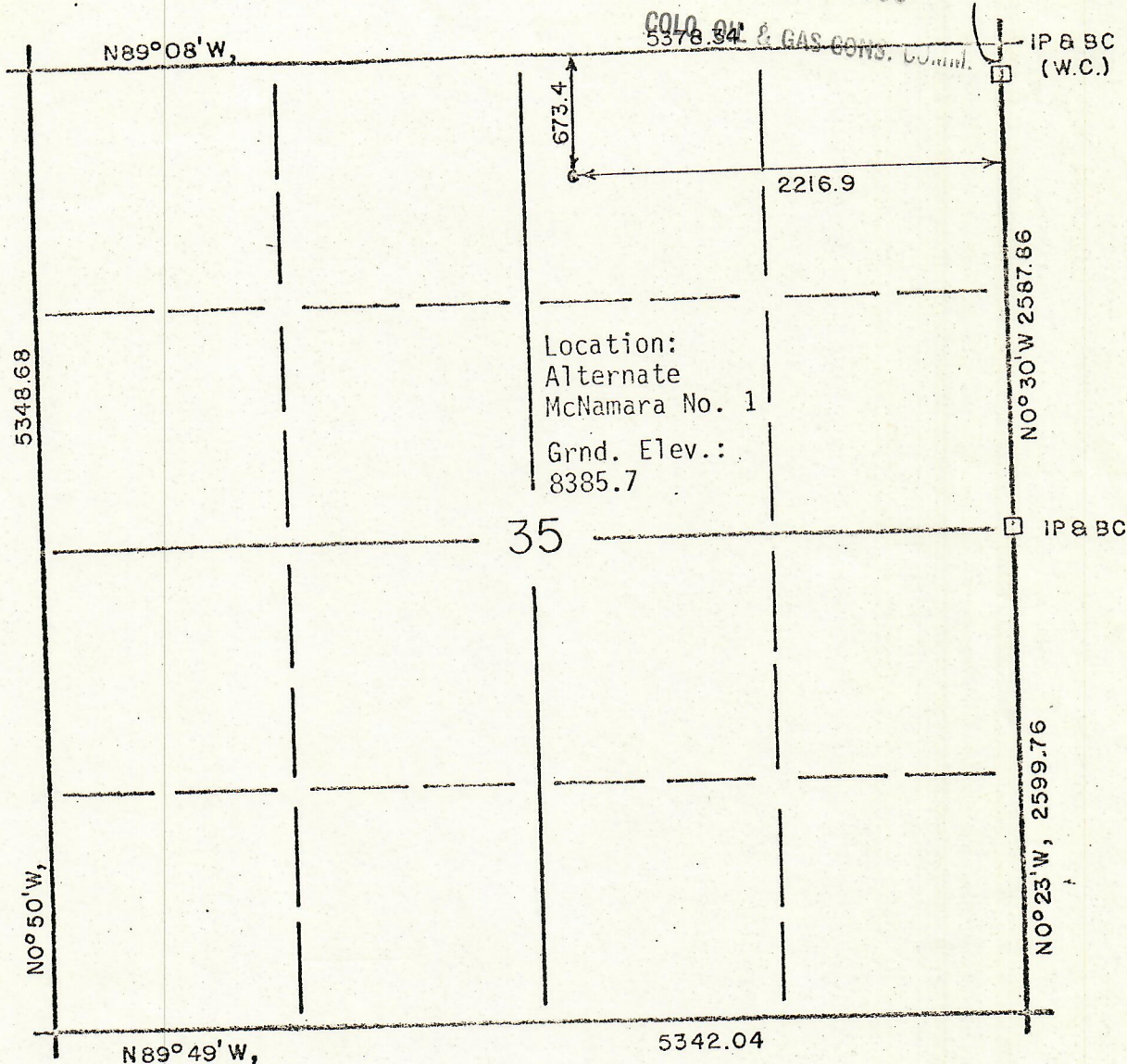
RECEIVED

JUL 31 1980

105.6'



T 6 N



## SURVEYOR'S CERTIFICATE

I, Martin A. Pedersen of Rawlins, Wyoming, hereby certify that this map was made from notes taken on a survey made under my supervision by Robert D. Haynes on June 23, 1980, and that it correctly represents the location "Alternate McNamara No. 1" as staked in the field.

CO Reg. No. 12437, L.S.

Ref. Point 200' North = 8385.7  
 Ref. Point 200' South = 8385.7  
 Ref. Point 200' East = 8385.7  
 Ref. Point 200' West = 8385.7

Elevations are referred to witness corner for the Northeast corner Section 35 = 8369

ROBERT JACK SMITH & ASSOC.  
 CONSULTING ENGINEER & LAND SURVEYOR  
 RAWLINS, WYO

## WELL LOCATION

Alternate McNamara No. 1

FOR

Marshall R. Young Oil Company

% McIlnay-Adams &amp; Co., Inc.

IN

NW¼ NE¼ Section 35, T6N, R81W

Jackson County

Colorado

Scale: 1" = 1000'

Map File No. 3478