

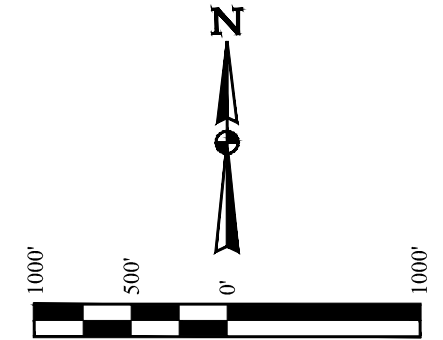
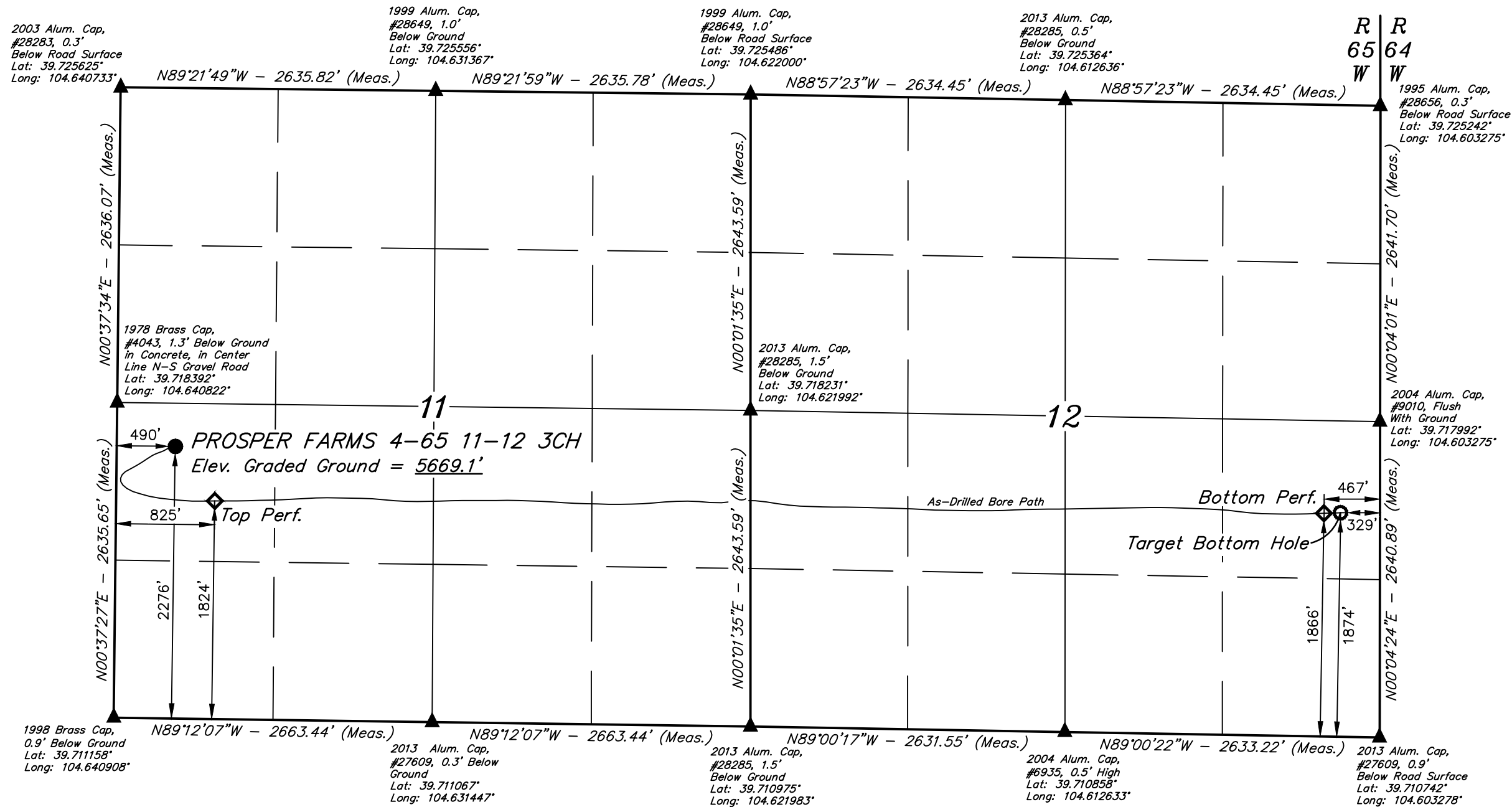
T4S, R65W, 6th P.M.

ConocoPhillips Company

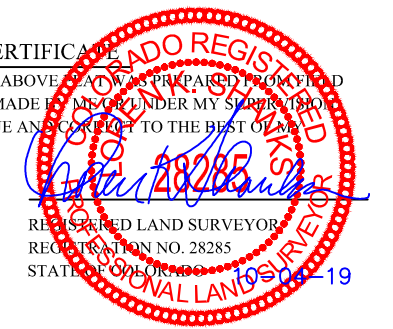
PROSPER FARMS 4-65 11-12 3CH (AS-DRILLED)
 NW 1/4 SW 1/4, SECTION 11, T4S, R65W, 6th P.M.
 ARAPAHOE COUNTY, COLORADO

BASIS OF BEARINGS
 BASIS OF BEARINGS IS A G.P.S. OBSERVATION
BASIS OF ELEVATION

USGS COOPERATIVE BASE NETWORK CONTROL STATION,
 DESIGNATION "K 374". NGS DATA SHEET LISTS THE NAVD 88
 ELEVATION AS BEING 6054.61 FEET.



CERTIFICATE
 THIS IS TO CERTIFY THAT THE ABOVE PLAT WAS PREPARED FROM THE
 NOTES OF ACTUAL SURVEYS MADE BY ME OR UNDER MY SUPERVISION
 AND THAT THE SAME ARE TRUE AND CORRECT TO THE BEST OF MY
 KNOWLEDGE AND BELIEF.



PDOP = 1.3

NOTE:
 Distances referenced on plat to section lines are perpendicular.

LEGEND:
 ● = PROPOSED WELLHEAD.
 ◆ = PERF POINT.
 ◊ = TARGET BOTTOM HOLE.
 ▲ = SECTION CORNERS LOCATED. (NAD 83)

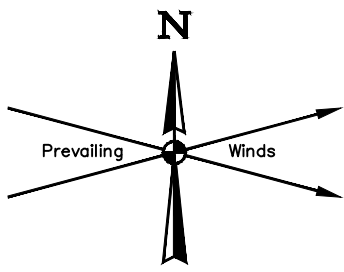
NAD 83 (SURFACE LOCATION)	NAD 83 (TOP PERF.)	NAD 83 (BOTTOM PERF.)	NAD 83 (AS-DRILLED BOTTOM HOLE)
LATITUDE = 39°43'02.59" (39.717386) LONGITUDE = 104°38'20.73" (104.639092)	LATITUDE = 39°42'58.09" (39.716136) LONGITUDE = 104°38'16.51" (104.637918)	LATITUDE = 39°42'57.19" (39.715886) LONGITUDE = 104°36'17.77" (104.604937)	LATITUDE = 39°42'57.24" (39.715900) LONGITUDE = 104°36'16.00" (104.604444)
NAD 27 (SURFACE LOCATION)	NAD 27 (TOP PERF.)	NAD 27 (BOTTOM PERF.)	NAD 27 (AS-DRILLED BOTTOM HOLE)
LATITUDE = 39°43'02.64" (39.717400) LONGITUDE = 104°38'18.85" (104.638569)	LATITUDE = 39°42'58.14" (39.716149) LONGITUDE = 104°38'14.62" (104.637395)	LATITUDE = 39°42'57.24" (39.715899) LONGITUDE = 104°36'15.89" (104.604415)	LATITUDE = 39°42'57.29" (39.715913) LONGITUDE = 104°36'14.12" (104.603921)
STATE PLANE NAD 83 (CO. CEN.)	STATE PLANE NAD 83 (CO. CEN.)	STATE PLANE NAD 83 (CO. CEN.)	STATE PLANE NAD 83 (CO. CEN.)
N: 1687335.16 E: 3242180.62	N: 1686882.64 E: 3242515.30	N: 1686881.18 E: 3251793.94	N: 1686887.60 E: 3251932.75
STATE PLANE NAD 27 (CO. CEN.)	STATE PLANE NAD 27 (CO. CEN.)	STATE PLANE NAD 27 (CO. CEN.)	STATE PLANE NAD 27 (CO. CEN.)
N: 687327.54 E: 2242334.19	N: 686875.03 E: 2242668.87	N: 686873.70 E: 2251947.44	N: 686880.13 E: 2252086.24

UINTAH
 ENGINEERING & LAND SURVEYING

WELL LOCATION PLAT

SURVEYED BY	DALLAS NIELSEN, C.M.	09-21-17	SCALE
DRAWN BY	J.U.	10-04-19	1" = 1000'

Corporate Office * 85 South 200 East
 Vernal, UT 84078 * (435) 789-1017



County Road 89

As-Built Road
Disturbance ±0.429 Acres

Existing Fence

Existing Gate

As-Built Access Road

Existing
Sediment
Basin

- Existing 4-65
11-12 3AH Wellhead
- Existing 4-65
11-12 3BH Wellhead
- Existing 4-65
11-12 3CH Wellhead
- Existing 4-65
11-12 3DH Wellhead

As-Built Pad Disturbance
±11.758 Acres

Edge of
As-Built Pad

Existing Pile

Section Line

Section 10
Section 11

APPROXIMATE SURFACE DISTURBANCE AREAS	
	ACRES
AS-BUILT WELL SITE DISTURBANCE	±11.758
AS-BUILT ROAD DISTURBANCE	±0.429
TOTAL AS-BUILT SURFACE USE AREA	±12.187

NOTES:

ConocoPhillips Company

**PROSPER FARMS 4-65 11-12 3AH, 3BH, 3CH & 3DH
NW 1/4 SW 1/4, SECTION 11, T4S, R65W, 6th P.M.
ARAPAHOE COUNTY, COLORADO**

SURVEYED BY	CHAD MEIERS, O.R.	04-02-19	SCALE
DRAWN BY	S.F.	04-03-19	1" = 100'
AS-BUILT			



UELS, LLC
Corporate Office * 85 South 200 East
Vernal, UT 84078 * (435) 789-1017