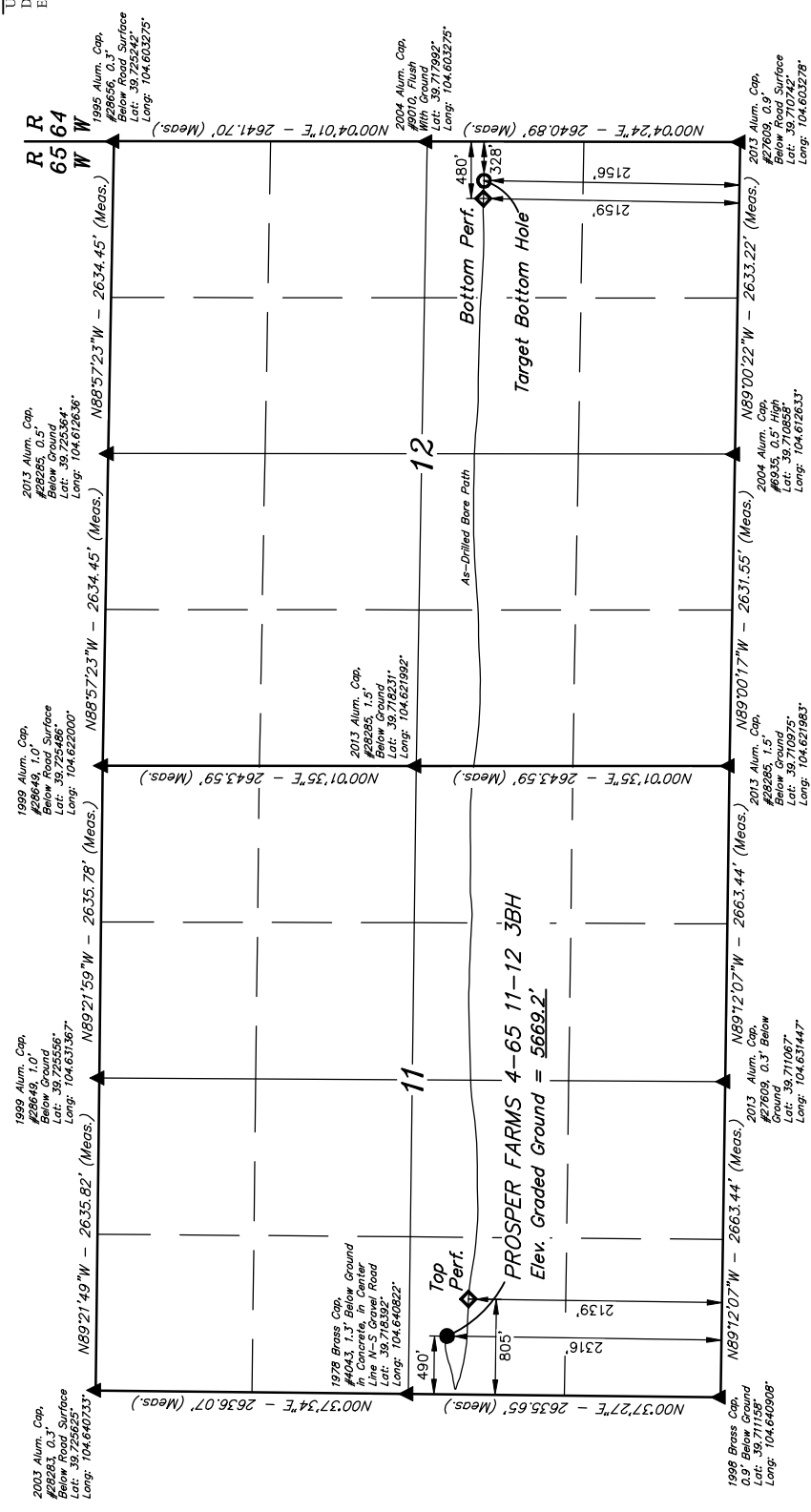
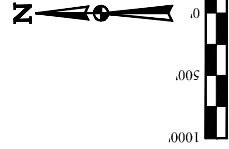


T4S, R65W, 6th P.M.

ConocoPhillips Company

PROSPER FARMS 4-65 11-12 3BH (AS-DRILLED)
NW 1/4 SW 1/4 SECTION 11, T4S, R65W, 6th P.M.
ARAPAHOE COUNTY, COLORADO

BASIS OF BEARINGS
USGS COOPERATIVE BASE NETWORK CONTROL STATION
DESIGNATION "K 374" - NGS DATA SHEET LISTS THE NAD 88
ELEVATION AS BEING 6054.61 FEET.



PDOP = 1.6

Well ID	Well Type	Latitude (NAD 83)	Longitude (NAD 83)	State Plane NAD 83 (CO. CEN.)
NAD 83 (SURFACE LOCATION)		39°43'02.99" (39.71497)	104°38'20.73" (104.63902)	3943029.99 (39.71497)
NAD 27 (SURFACE LOCATION)		39°43'03.04" (39.71511)	104°38'18.84" (104.63857)	3943030.4 (39.71511)
NAD 83 (TOP PERF.)		39°43'01.21" (39.717002)	104°38'16.72" (104.637972)	3943012.1 (39.717002)
NAD 27 (TOP PERF.)		39°43'01.25" (39.717015)	104°38'14.83" (104.637433)	3943012.5 (39.717015)
NAD 83 (BOTTOM PERF.)		39°43'00.08" (39.716689)	104°38'17.93" (104.609811)	3943000.8 (39.716689)
NAD 27 (BOTTOM PERF.)		39°43'00.08" (39.716689)	104°38'16.05" (104.604459)	3943000.8 (39.716689)
NAD 83 (AS-DRILLED BOTTOM HOLE)		39°43'00.03" (39.716674)	104°38'15.99" (104.604442)	3943000.3 (39.716674)
NAD 27 (AS-DRILLED BOTTOM HOLE)		39°43'00.08" (39.716689)	104°38'14.1" (104.603919)	3943000.8 (39.716689)

NOTE: Distances referenced on plat to section lines are perpendicular.

LEGEND:
 ● = PROPOSED WELLHEAD.
 ○ = PERF POINT.
 ◇ = TARGET BOTTOM HOLE.
 ▲ = SECTION CORNERS LOCATED. (NAD 83)



CERTIFICATE TO CERTIFY THAT THE ABOVE SURVEY WAS CONDUCTED IN ACCORDANCE WITH THE RULES AND REGULATIONS OF THE BOARD OF LAND SURVEYORS OF THE STATE OF COLORADO AND THAT THE SAME ARE TRUE AND CORRECT TO THE BEST OF HIS KNOWLEDGE AND BELIEF.

JINTAH
ENGINEERING & LAND SURVEYING

UELS, LLC
Corporate Office * 85 South 200 East
Vernal, UT 84078 * (435) 789-1017

SURVEYED BY: DALLAS NIELSEN, C.M.
DRAWN BY: J.U.
SCALE: 1" = 1000'

10-04-19

WELL LOCATION PLAT