

T4S, R65W, 6th P.M.

ConocoPhillips Company

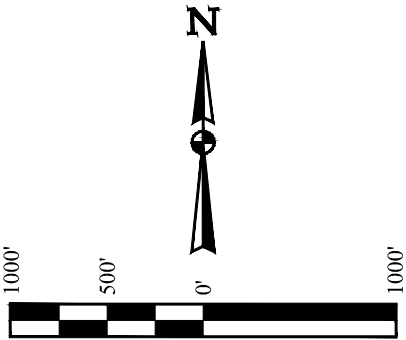
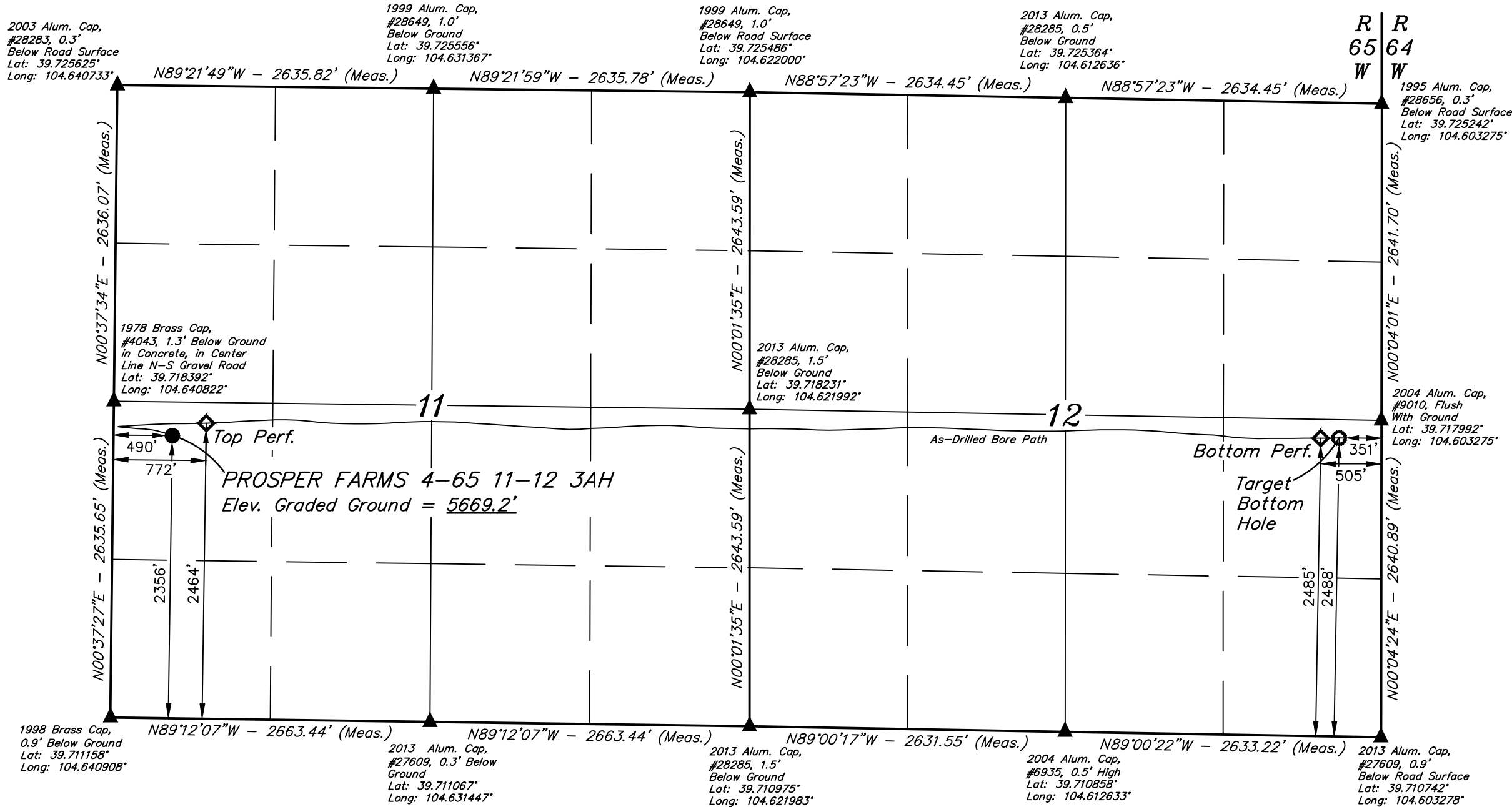
PROSPER FARMS 4-65 11-12 3AH (AS-DRILLED)
NW 1/4 SW 1/4, SECTION 11, T4S, R65W, 6th P.M.
ARAPAHOE COUNTY, COLORADO

BASIS OF BEARINGS

BASIS OF BEARINGS IS A G.P.S. OBSERVATION

BASIS OF ELEVATION

USGS COOPERATIVE BASE NETWORK CONTROL STATION,
DESIGNATION "K 374". NGS DATA SHEET LISTS THE NAVD 88
ELEVATION AS BEING 6054.61 FEET.



CERTIFICATE

THIS IS TO CERTIFY THAT THE ABOVE PLAT WAS PREPARED FROM FIELD NOTES OF ACTUAL SURVEYS MADE BY ME OR UNDER MY SUPERVISION AND THAT THE SAME ARE TRUE AND CORRECT TO THE BEST OF MY KNOWLEDGE AND BELIEF.

REGISTERED LAND SURVEYOR
REGISTRATION NO. 28285
STATE OF COLORADO
09-04-19

PDOP = 1.6

NOTE:
• Distances referenced on plat to section lines are perpendicular.

LEGEND:

- = PROPOSED WELLHEAD.
- ◆ = PERF POINT.
- = TARGET BOTTOM HOLE.
- ▲ = SECTION CORNERS LOCATED. (NAD 83)

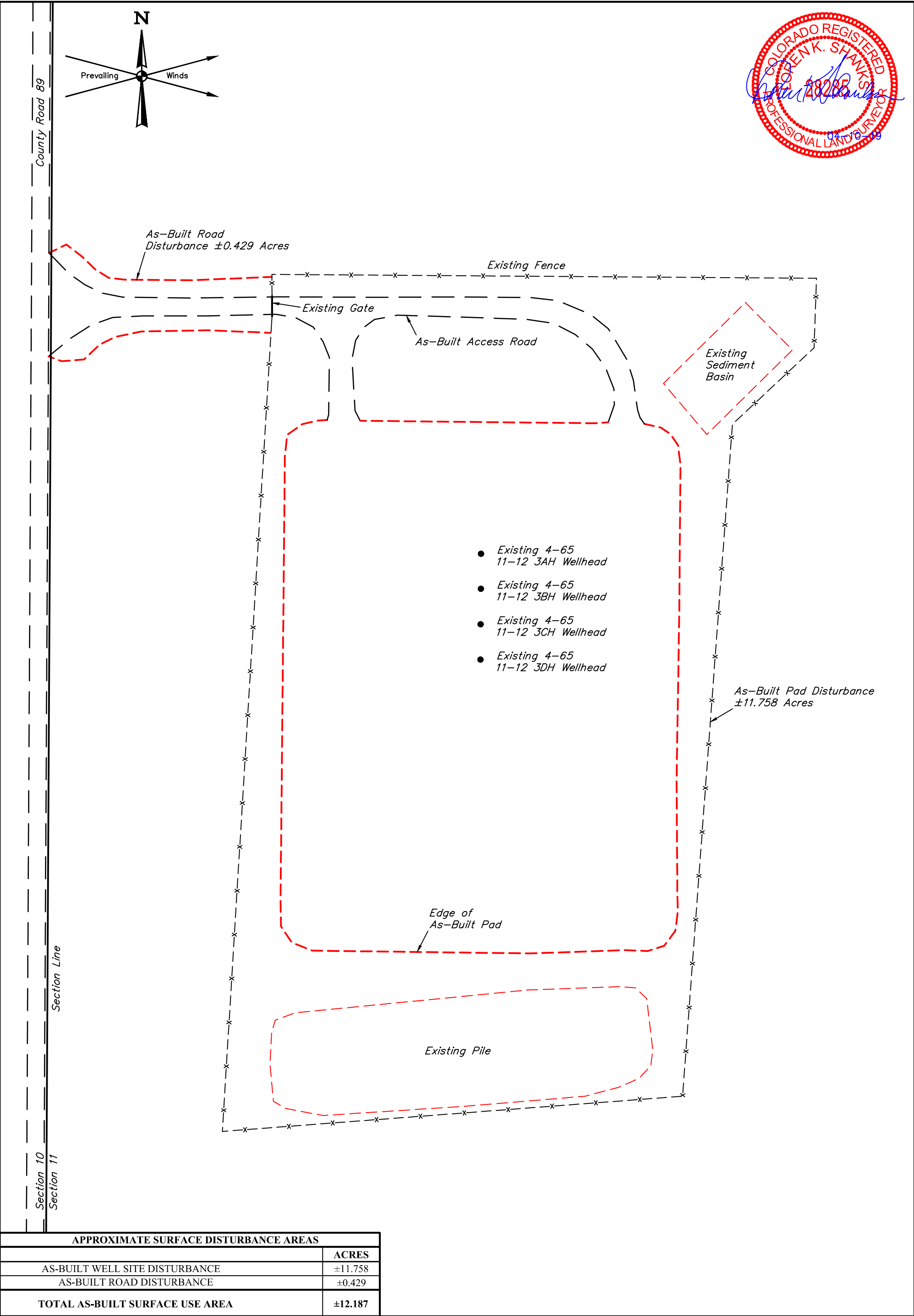
NAD 83 (SURFACE LOCATION)	NAD 83 (TOP PERF.)	NAD 83 (BOTTOM PERF.)	NAD 83 (AS-DRILLED BOTTOM HOLE)
LATITUDE = 39°43'03.38" (39.717606)	LATITUDE = 39°43'04.42" (39.717893)	LATITUDE = 39°43'03.31" (39.717585)	LATITUDE = 39°43'03.31" (39.717587)
LONGITUDE = 104°38'20.72" (104.639089)	LONGITUDE = 104°38'17.11" (104.638086)	LONGITUDE = 104°36'18.26" (104.605071)	LONGITUDE = 104°36'16.29" (104.604524)
NAD 27 (SURFACE LOCATION)	NAD 27 (TOP PERF.)	NAD 27 (BOTTOM PERF.)	NAD 27 (AS-DRILLED BOTTOM HOLE)
LATITUDE = 39°43'03.43" (39.717619)	LATITUDE = 39°43'04.46" (39.717906)	LATITUDE = 39°43'03.35" (39.717598)	LATITUDE = 39°43'03.36" (39.717600)
LONGITUDE = 104°38'18.84" (104.638567)	LONGITUDE = 104°38'15.22" (104.637562)	LONGITUDE = 104°36'16.37" (104.604549)	LONGITUDE = 104°36'14.40" (104.604001)
STATE PLANE NAD 83 (CO. CEN.)	STATE PLANE NAD 83 (CO. CEN.)	STATE PLANE NAD 83 (CO. CEN.)	STATE PLANE NAD 83 (CO. CEN.)
N: 1687415.14 E: 3242180.59	N: 1687522.13 E: 3242462.18	N: 1687499.66 E: 3251750.22	N: 1687501.98 E: 3251904.15
STATE PLANE NAD 27 (CO. CEN.)	STATE PLANE NAD 27 (CO. CEN.)	STATE PLANE NAD 27 (CO. CEN.)	STATE PLANE NAD 27 (CO. CEN.)
N: 687407.51 E: 2242334.16	N: 687514.51 E: 2242615.74	N: 687492.18 E: 2251903.70	N: 687494.50 E: 2252057.63



UELS, LLC
Corporate Office * 85 South 200 East
Vernal, UT 84078 * (435) 789-1017

SURVEYED BY	DALLAS NIELSEN, C.M.	09-21-17	SCALE
DRAWN BY	J.U.	10-04-19	1" = 1000'

WELL LOCATION PLAT



NOTES:

ConocoPhillips Company

PROSPER FARMS 4-65 11-12 3AH, 3BH, 3CH & 3DH
NW 1/4 SW 1/4, SECTION 11, T4S, R65W, 6th P.M.
ARAPAHOE COUNTY, COLORADO

SURVEYED BY	CHAD MEIERS, O.R.	04-02-19	SCALE
DRAWN BY	S.F.	04-03-19	1" = 100'

AS-BUILT

UINTEAH
ENGINEERING & LAND SURVEYING

UELS, LLC
Corporate Office * 85 South 200 East
Vernal, UT 84078 * (435) 789-1017