

Piceance Creek Unit 297-10A1 to 10A9

API: 05-103-11309, 10729 to 10736

Inspection: 679706228

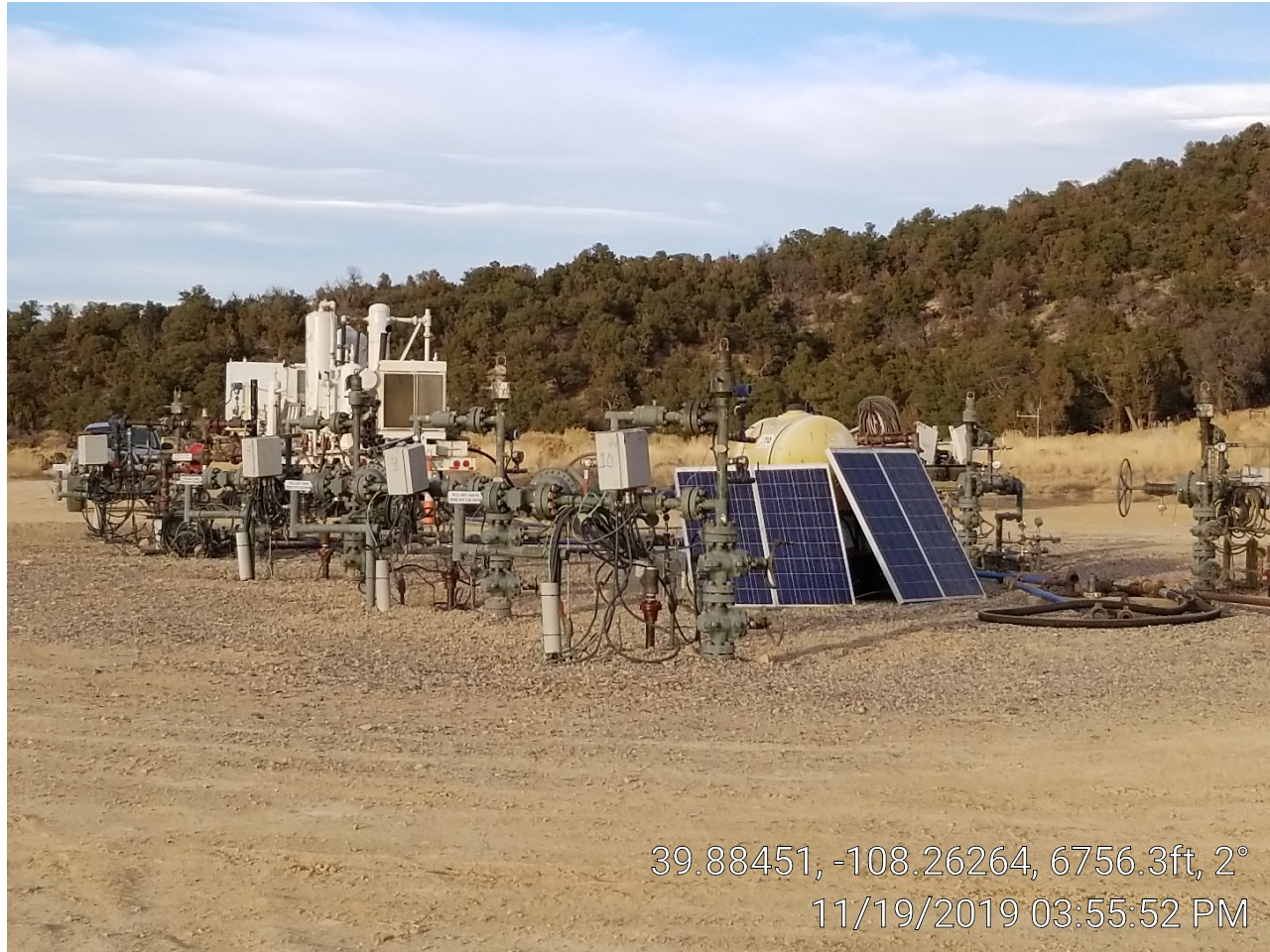


Photo 1. Well heads & compressor.



COLORADO
Oil & Gas Conservation
Commission
Department of Natural Resources

Piceance Creek Unit 297-10A1 to 10A9
API: 05-103-11309, 10729 to 10736
Inspection: 679706228



Photo 2. Battery, separator, chemical, and well header.

Piceance Creek Unit 297-10A1 to 10A9
API: 05-103-11309, 10729 to 10736
Inspection: 679706228



39.88593, -108.26163, 6717.4ft, 144°
11/19/2019 03:45:55 PM

Photo 3. Chemical.