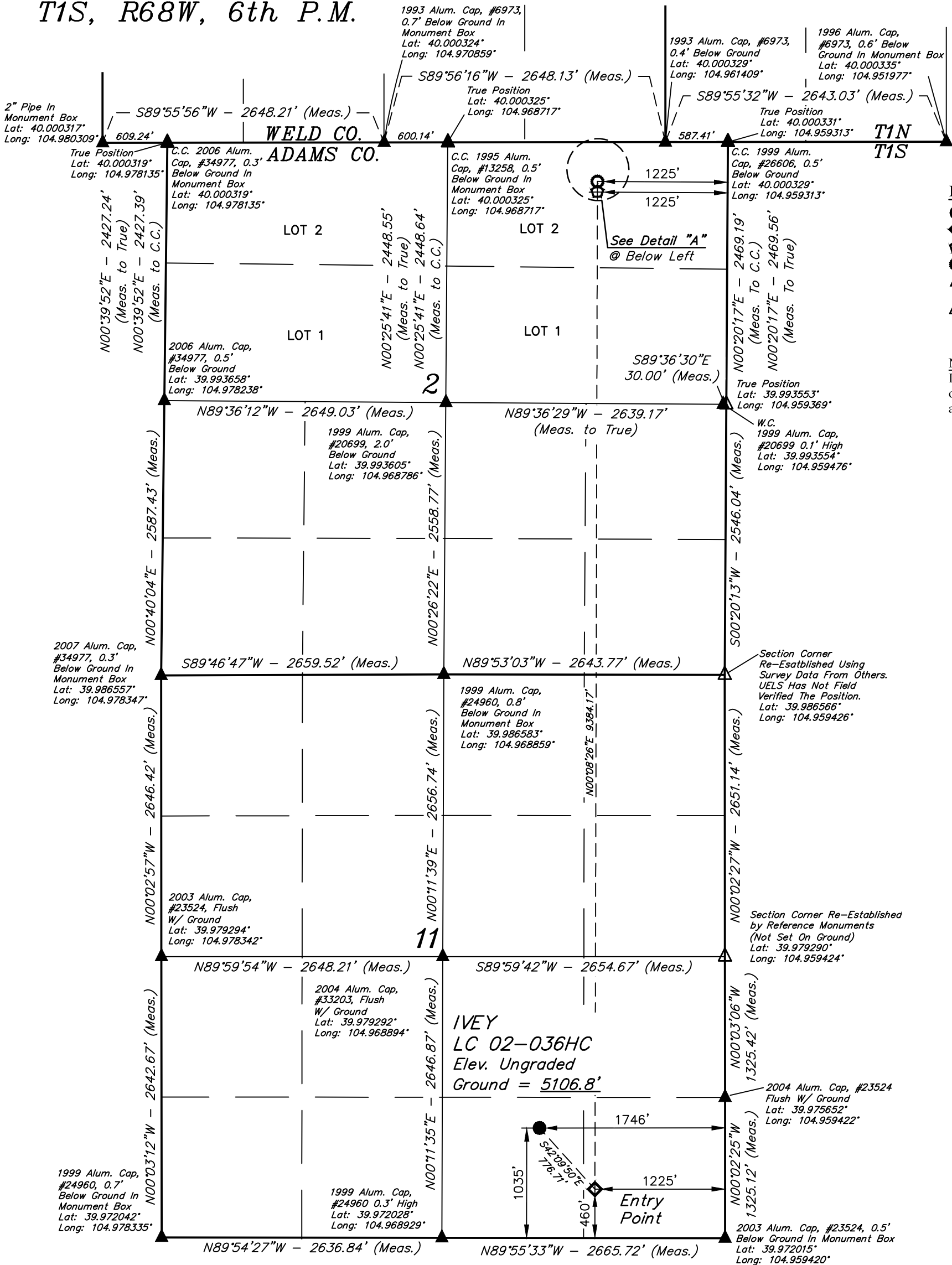
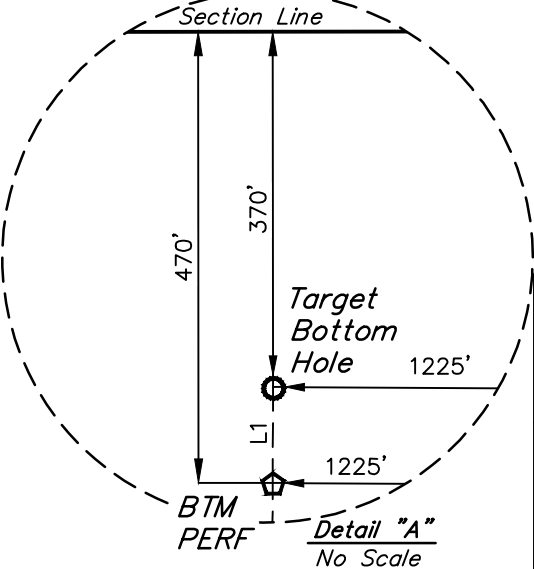


T1S, R68W, 6th P.M.



- LEGEND:**
- = PROPOSED WELLHEAD.
 - ◆ = ENTRY POINT.
 - ◻ = BTM PERF.
 - = TARGET BOTTOM HOLE.
 - ▲ = SECTION CORNERS LOCATED. (NAD 83)
 - △ = SECTION CORNERS RE-ESTABLISHED. (Not Set on Ground.) (NAD 83)

NOTE:
Distances referenced on plat to section lines are perpendicular.



LINE TABLE		
LINE	DIRECTION	LENGTH
L1	N00°20'17"E	100.00'

PDOP = 1.2



NAD 83 (SURFACE LOCATION)		NAD 83 (ENTRY POINT)	
LATITUDE = 39°58'29.51" (39.974864°)		LATITUDE = 39°58'23.82" (39.973284°)	
LONGITUDE = 104°57'56.34" (104.965650°)		LONGITUDE = 104°57'49.65" (104.963791°)	
NAD 27 (SURFACE LOCATION)		NAD 27 (ENTRY POINT)	
LATITUDE = 39°58'29.57" (39.974880°)		LATITUDE = 39°58'23.88" (39.973299°)	
LONGITUDE = 104°57'54.41" (104.965115°)		LONGITUDE = 104°57'47.72" (104.963256°)	
NAD 83 (BTM PERF)		NAD 83 (TARGET BOTTOM HOLE)	
LATITUDE = 39°59'56.54" (39.999038°)		LATITUDE = 39°59'57.53" (39.999313°)	
LONGITUDE = 104°57'49.30" (104.963695°)		LONGITUDE = 104°57'49.29" (104.963693°)	
NAD 27 (BTM PERF)		NAD 27 (TARGET BOTTOM HOLE)	
LATITUDE = 39°59'56.59" (39.999054°)		LATITUDE = 39°59'57.58" (39.999328°)	
LONGITUDE = 104°57'47.38" (104.963161°)		LONGITUDE = 104°57'47.37" (104.963158°)	

CERTIFICATE
THIS IS TO CERTIFY THAT THE ABOVE PLAT WAS PREPARED FROM FIELD NOTES OF ACTUAL SURVEYS MADE BY ME OR UNDER MY SUPERVISION AND THAT THE SAME ARE TRUE AND CORRECT TO THE BEST OF MY KNOWLEDGE AND BELIEF.



REV: 2 07-24-19 T.A. (SL CHANGE)

BASIS OF BEARINGS
BASIS OF BEARINGS IS A TRANSVERSE MERCATOR PROJECTION WITH A CENTRAL MERIDIAN OF W105°00'00"

BASIS OF ELEVATION
OPUS SOLUTION GENERATED NAVD88



UELS, LLC
Corporate Office * 85 South 200 East
Vernal, UT 84078 * (435) 789-1017

GREAT WESTERN OPERATING COMPANY

IVEY LC 02-036HC
SW 1/4 SE 1/4, SECTION 11, T1S, R68W, 6th P.M.
ADAMS COUNTY, COLORADO

SURVEYED BY	RYAN WILLIAMS, J.C.	06-08-18	SCALE
DRAWN BY	B.L.B.	06-28-18	1" = 1000'

WELL LOCATION PLAT