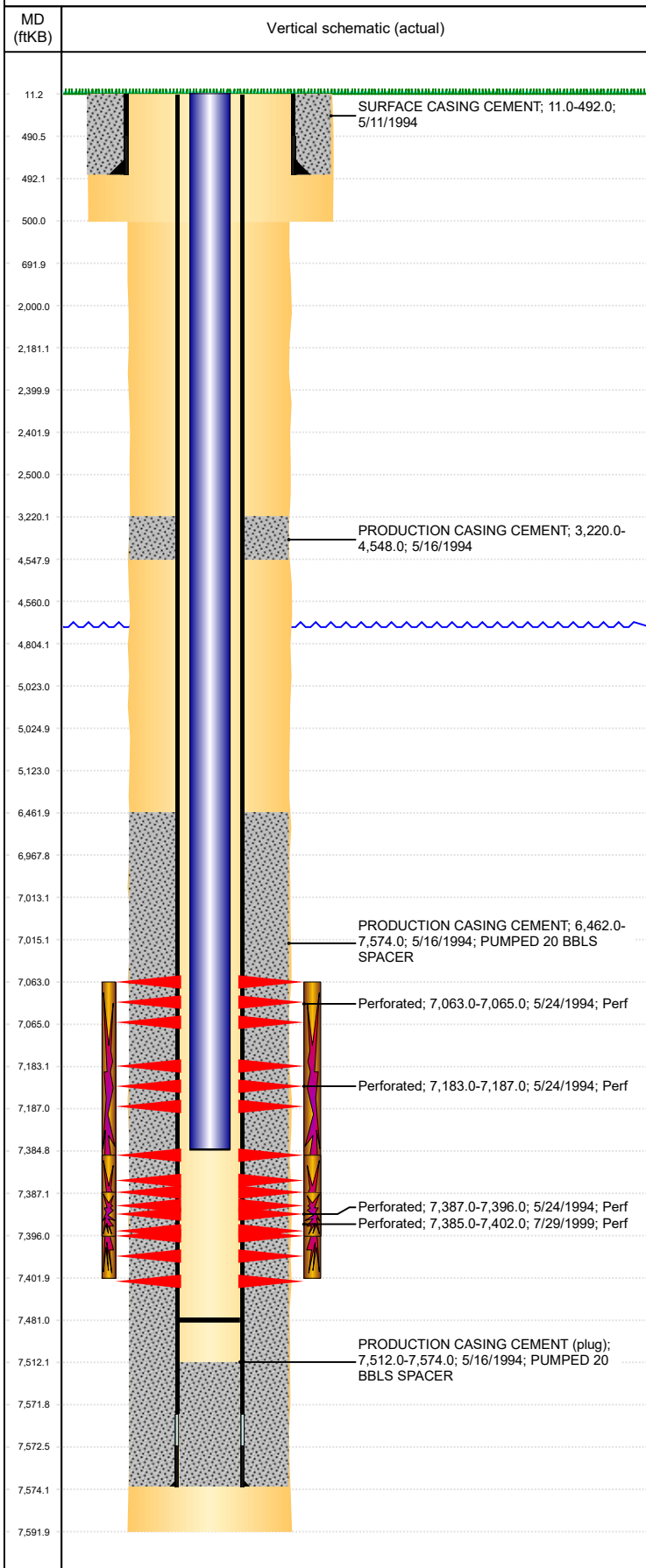


Well Name: UPRC 09-0316

DEVIATED, ORIGINAL HOLE, 11/21/2019 10:45:21 AM



Well Header									
API 05-123-18262		Business Unit DJ BASIN			District 15		Well Config DEVIATED		
KB - GL / MSL (ft... 11.00		Spud Date 5/10/1994		P & A Date		Well Production Status PR			SoRT No
Comment LIMITED ENTRY. DISCREPANCY: TRIFRAC PERF DEPTHS- TREATMENT RPT- 7385-7400', DRL RPT & ST 7387-7396'. 7/17/15- CHASED TOOL TO 7355'.									
Surface Location (Congressional)									
Qtr 3 SE	Qtr 4 NW	Section 9	Twnshp 4	Twnsh... N	Range 66	Rng E... W	Actual Latitude (°) 40.32937608	Actual Longitude (°) -104.78697500	
Wellbore Sections									
Section Des			Size (in)			Act Top, MD (ftKB)		Act Btm, MD (ftKB)	
SURFACE			12 1/4			11		500	
PRODUCTION			7 7/8			500		7,592	
Casing Strings									
Csg Des		Run Date		OD (in)	Wt/Len (lb/ft)	Grade	Top, MD (ftKB)	MD (ftKB)	
Surface		5/11/1994		8 5/8	23.00		11.0	492.0	
Production		5/16/1994		3 1/2	7.70	B-70	11.0	7,574.0	
Cement									
Des				Start Date		Top (ftKB)		Btm (ftKB)	
SURFACE CASING CEMENT				5/11/1994		11.0		492.0	
PRODUCTION CASING CEMENT				5/16/1994		3,220.0		4,548.0	
PRODUCTION CASING CEMENT				5/16/1994		6,462.0		7,574.0	
Zone Statuses									
Zone Name		Status Date	Status	Fluid Type	Job			Prod Method	
CODELL		8/18/2014	TA		HORIZONTAL WELL PREP, 8/14/2014 12:00			Flowing	
CODELL		6/4/2015	PR		HORIZONTAL WELL PREP, 8/14/2014 12:00				
NIOBRARA		8/18/2014	TA		HORIZONTAL WELL PREP, 8/14/2014 12:00			Flowing	
NIOBRARA		6/4/2015	PR		HORIZONTAL WELL PREP, 8/14/2014 12:00				
NIOBRARA-CO...		8/18/2014							
Perforation Data									
Linked Zone		Bnch/Stg	Entered Shot Total	Top (ftKB)		Btm (ftKB)		Date	
NIOBRARA, ORIGINAL HOLE			3	7,063.00		7,065.00		5/24/1994	
NIOBRARA, ORIGINAL HOLE			3	7,183.00		7,187.00		5/24/1994	
CODELL, ORIGINAL HOLE			68	7,385.00		7,402.00		7/29/1999	
CODELL, ORIGINAL HOLE			9	7,387.00		7,396.00		5/24/1994	
Stimulation Intervals									
Zone			Start Date			Top (ftKB)		Btm (ftKB)	
NIOBRARA-CODELL, ORIGINAL HOLE			5/31/1994			7,063.0		7,396.0	
CODELL, ORIGINAL HOLE			8/5/1999			7,385.0		7,402.0	
CODELL, ORIGINAL HOLE			5/15/2006			7,387.0		7,396.0	
Other In Hole									
Run Date		Des				OD (in)	Top (ftKB)	Btm (ftKB)	
Logs									
Date		Type				Top, MD (ftKB)		Btm, MD (ftKB)	
5/16/1994		INDUCTION				492.0		7,590.0	
5/24/1994		CEMENT BOND				3,100.0		7,507.0	
2/21/2014		GYRO				0.0		7,250.0	
Plug Back Total Depths									
Date		Type		Com				Depth (ftKB)	
5/16/2006		FILL		TAG TO LAND TUBING				7,469.0	
6/5/2015		FILL		NO C/O				7,481.0	