

Inspection Photos  
Location Name: MITZI 22-19  
API#: 05-071-09044  
INSP. #: 695101792



Colorado Oil & Gas Conservation Commission  
37.15787, -104.71641, 2053.0m, 242°  
2019/11/20 16:12:42

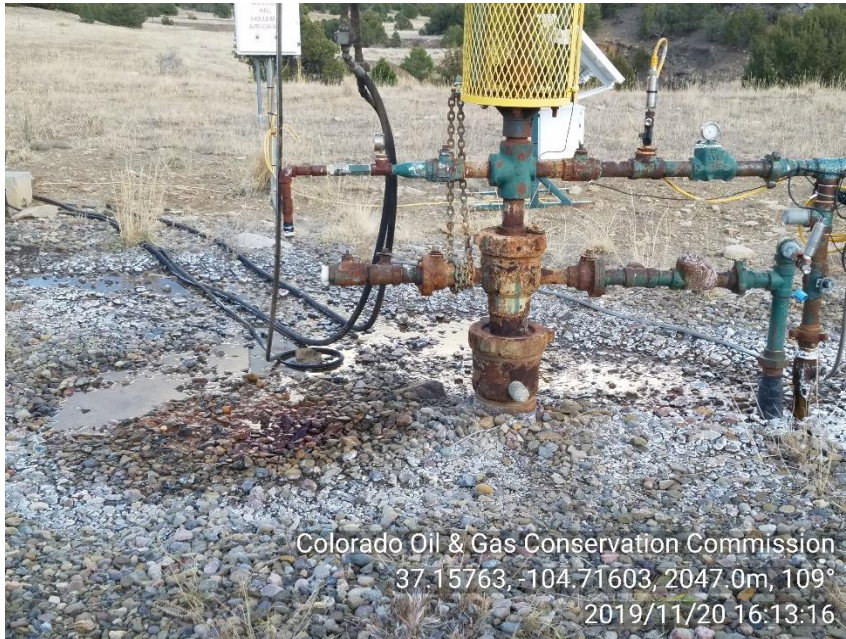
PHOTO 1: LOCATION



Colorado Oil & Gas Conservation Commission  
37.15756, -104.71604, 2039.0m, 191°  
2019/11/20 16:16:28

PHOTO 2: WELL SIGN

Inspection Photos  
Location Name: MITZI 22-19  
API#: 05-071-09044  
INSP. #: 695101792



**PHOTO 3: 1" VALVE ON TBG TREE IS LEAKING (JUDGING BY THE DISCOLORATION OF THE GRAVEL BELOW THE 1" OUTLET THIS WELL HAS BEEN LEAKING FOR A LENGTHY AMOUNT OF TIME). Securely fasten all valves, pipes, and fittings to ensure good mechanical condition, inspect at regular intervals and maintain in good mechanical condition per Rule 605.d. Report spill or release of E&P waste or produced fluids Remove free fluids and contact COGCC EPS staff per Rule 906.b. 24 hours for notification and 72 hours for Initial Form 19 Report.**

**PHOTO 4: FLUID FROM WELL HAS TRAVELED APP. 129' FROM WELLHEAD.**



Inspection Photos  
Location Name: MITZI 22-19  
API#: 05-071-09044  
INSP. #: 695101792



**PHOTO 5: ANOTHER IMAGE OF IMPACTED AREA ON LOCATION.**



**PHOTO 6: DISCOLORATION OF GRAVEL BENEATH LEAKING 1" VALVE INDICATING LEAK HAS BEEN PRESENT FOR A LENGTHY ABOUT OF TIME.**