



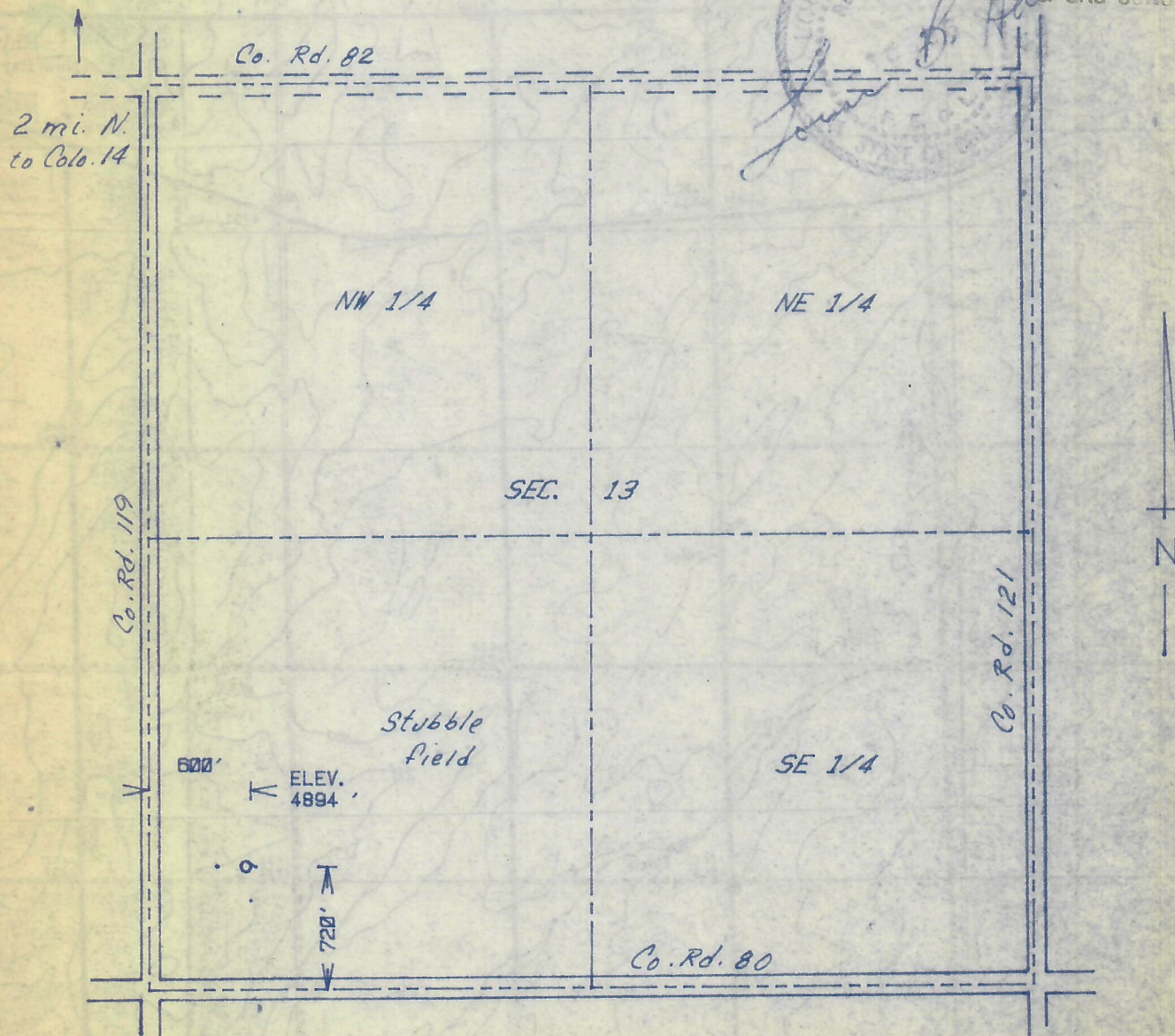
ENERGY MINERALS CORPORATION
WILDCAT CREEK PROSPECT
WELD COUNTY, COLORADO

The accompanying plat is an accurate representation showing the location of a proposed well. This location may be described as a point 720 feet north of the south line, and 600 feet east of the west line of Section 13, Township 7 N Range 59 W of the 6th P.M., WELD COUNTY, COLORADO. The surface elevation at this point is 4894 feet m.s.l.

RECEIVED

JAN 24 1984

COLORADO OIL & GAS CONS. COM.



SCALE - 1"=1000'

- SURVEYED POINT
- REFERENCE STAKE (200 'S, 200 'W)
- SW 1/4 SEC. 13 , T 7 N, R 59 W

ARMON
ENGINEERING
SERVICES

KELLER #1

ENERGY MINERALS CORP.

WELD CO., COLORADO

4 JANUARY 1984