

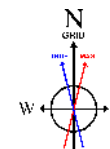
NICKEL ROAD OPERATING

Location: COLORADO Slot: SLOT#03 DRAKE 5X-HC-11-07-67 (2369'FSL & 1708'FEL SEC.12)
 Field: WELD COUNTY (NAD83/GRID NORTH) Well: DRAKE 5X-HC-11-07-67
 Facility: SEC.12-T07N-R67W Wellbore: DRAKE 5X-HC-11-07-67 PWB

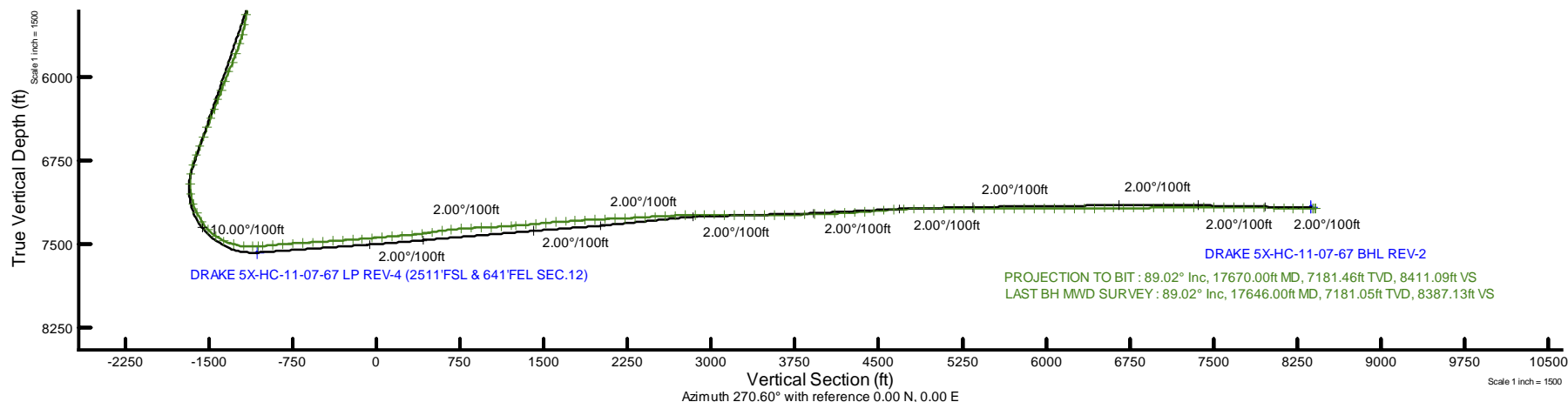
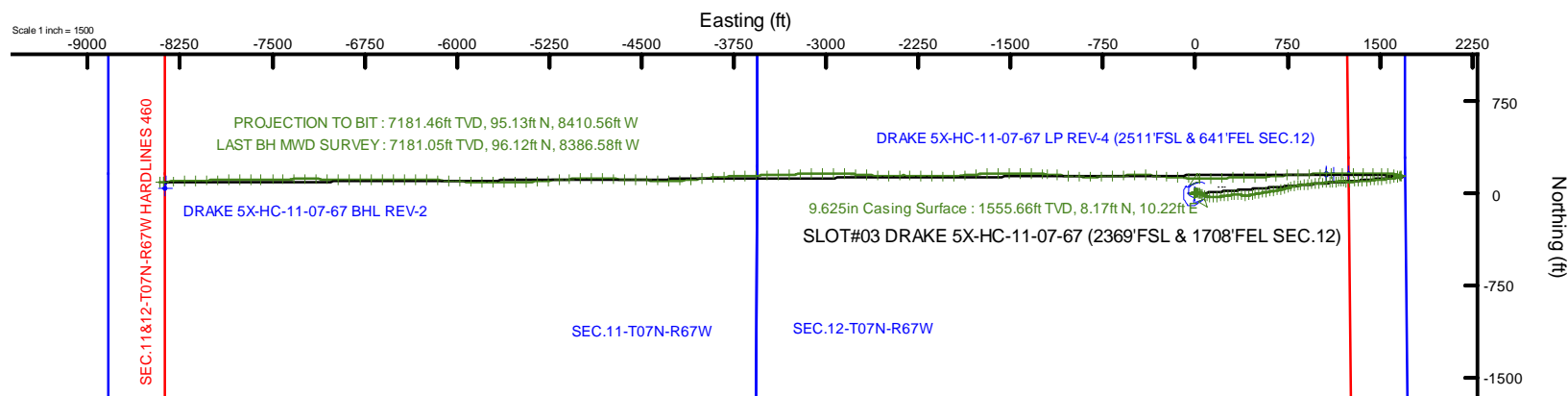
Plot reference wellpath is DRAKE 5X-HC-11-07-67 REV-F.0 PWP	Grid System: NAD83 / Lambert Colorado SP, Northern Zone (501), US feet
True vertical depths are referenced to ENSIGN 140 (23KB) (RKB)	North Reference: Grid north
Reference wellpath measured depths are referenced to ENSIGN 140 (23KB) (RKB)	Scale: True distance
ENSGN 140 (23KB) (RKB) to Mean Sea Level: 5111 feet	Coordinates are in feet referenced to Slot
Mean Sea Level to Ground level (At Slot: SLOT#03 DRAKE 5X-HC-11-07-67 (2369'FSL & 1708'FEL SEC.12)): 0 feet	Depths are in feet
Offset wellpath MDs are referenced to each path's default MD datum	Created by: adamkat on 2019-11-15; Database: Denver



NICKEL ROAD
O P E R A T I N G



BGM (1900.0 to 2020.0) Dip: 66.89° Field: 52233.8 nT
 Magnetic North is 8.22 degrees East of True North (at 8/1/2019)
 Grid North is 0.43 degrees East of True North
 To correct azimuth from True to Grid subtract 0.43 degrees
 To correct azimuth from Magnetic to Grid add 7.79 degrees



Actual Wellpath Report

DRAKE 5X-HC-11-07-67 AWP

Page 1 of 10

REFERENCE WELLPATH IDENTIFICATION			
Operator	NICKEL ROAD OPERATING	Well	DRAKE 5X-HC-11-07-67
Field	WELD COUNTY (NAD83/GRID NORTH)	API/Legal	
Facility	SEC.12-T07N-R67W	Wellbore	DRAKE 5X-HC-11-07-67 AWB
Slot	SLOT#03 DRAKE 5X-HC-11-07-67 (2369'FSL & 1708'FEL SEC.12)		

REPORT SETUP INFORMATION			
Projection System	NAD83 / Lambert Colorado SP, Northern Zone (501), US feet	Software System	WellArchitect® 6.0
North Reference	Grid	User	Adamkat
Scale	0.999974	Report Generated	11/15/2019 at 1:16:00 PM
Convergence at slot	0.43° East	Database	Denver

WELLPATH LOCATION						
	Local coordinates		Grid coordinates		Geographic coordinates	
	North[ft]	East[ft]	Easting[US ft]	Northing[US ft]	Latitude	Longitude
Slot Location	0.00	0.00	3183871.85	1457749.59	40°35'16.9330"N	104°50'16.6560"W
Facility Reference Pt			3183871.85	1457749.59	40°35'16.9330"N	104°50'16.6560"W
Field Reference Pt			3183871.85	1457749.61	40°35'16.9332"N	104°50'16.6560"W

WELLPATH DATUM			
Calculation method	Minimum curvature	ENSIGN 140 (23'KB) (RKB) to Facility Vertical Datum	5111.00ft
Horizontal Reference Pt	Slot	ENSIGN 140 (23'KB) (RKB) to Mean Sea Level	5111.00ft
Vertical Reference Pt	ENSIGN 140 (23'KB) (RKB)	ENSIGN 140 (23'KB) (RKB) to Ground Level at Slot (SLOT#03 DRAKE 5X-HC-11-07-67 (2369'FSL & 1708'FEL SEC.12))	5111.00ft
MD Reference Pt	ENSIGN 140 (23'KB) (RKB)	Section Origin	N 0.00, E 0.00 ft
Field Vertical Reference	Mean Sea Level	Section Azimuth	270.60°

Actual Wellpath Report

DRAKE 5X-HC-11-07-67 AWP

Page 2 of 10

REFERENCE WELLPATH IDENTIFICATION

Operator	NICKEL ROAD OPERATING	Well	DRAKE 5X-HC-11-07-67
Field	WELD COUNTY (NAD83/GRID NORTH)	API/Legal	
Facility	SEC.12-T07N-R67W	Wellbore	DRAKE 5X-HC-11-07-67 AWP
Slot	SLOT#03 DRAKE 5X-HC-11-07-67 (2369'FSL & 1708'FEL SEC.12)		

WELLPATH DATA (202 stations) † = interpolated, ‡ = extrapolated station

MD [ft]	Inclination [°]	Azimuth [°]	TVD [ft]	Vert Sect [ft]	North [ft]	East [ft]	Grid East [US ft]	Grid North [US ft]	Latitude	Longitude	DLS [°/100ft]	Comments
0.00†	0.000	232.610	0.00	0.00	0.00	0.00	3183871.85	1457749.59	40°35'16.9330"N	104°50'16.6560"W	0.00	
23.00	0.000	232.610	23.00	0.00	0.00	0.00	3183871.85	1457749.59	40°35'16.9330"N	104°50'16.6560"W	0.00	
138.00	0.410	232.610	138.00	0.32	-0.25	-0.33	3183871.52	1457749.34	40°35'16.9306"N	104°50'16.6603"W	0.36	
230.00	0.190	243.920	230.00	0.72	-0.52	-0.73	3183871.13	1457749.07	40°35'16.9279"N	104°50'16.6655"W	0.25	
321.00	0.280	247.170	321.00	1.06	-0.67	-1.07	3183870.78	1457748.92	40°35'16.9265"N	104°50'16.6699"W	0.10	
410.00	0.380	205.050	410.00	1.38	-1.02	-1.39	3183870.46	1457748.57	40°35'16.9230"N	104°50'16.6741"W	0.29	
499.00	0.220	234.930	498.99	1.64	-1.39	-1.66	3183870.19	1457748.20	40°35'16.9194"N	104°50'16.6776"W	0.25	
588.00	0.560	232.690	587.99	2.12	-1.75	-2.14	3183869.71	1457747.84	40°35'16.9159"N	104°50'16.6839"W	0.38	
678.00	0.400	235.630	677.99	2.73	-2.19	-2.75	3183869.10	1457747.39	40°35'16.9115"N	104°50'16.6919"W	0.18	
767.00	0.590	251.190	766.99	3.41	-2.52	-3.44	3183868.41	1457747.07	40°35'16.9084"N	104°50'16.7008"W	0.26	
857.00	0.900	353.680	856.98	3.94	-1.96	-3.96	3183867.89	1457747.62	40°35'16.9139"N	104°50'16.7075"W	1.31	
946.00	0.760	0.740	945.97	4.02	-0.68	-4.03	3183867.82	1457748.91	40°35'16.9266"N	104°50'16.7083"W	0.19	
1036.00	1.020	348.200	1035.96	4.19	0.70	-4.18	3183867.67	1457750.29	40°35'16.9403"N	104°50'16.7101"W	0.36	
1125.00	1.530	49.630	1124.94	3.46	2.25	-3.44	3183868.41	1457751.84	40°35'16.9555"N	104°50'16.7004"W	1.54	
1214.00	2.090	48.430	1213.90	1.36	4.10	-1.32	3183870.53	1457753.68	40°35'16.9736"N	104°50'16.6727"W	0.63	
1303.00	2.240	48.830	1302.83	-1.14	6.32	1.20	3183873.05	1457755.90	40°35'16.9953"N	104°50'16.6398"W	0.17	
1392.00	2.070	75.590	1391.77	-3.99	7.86	4.07	3183875.92	1457757.45	40°35'17.0104"N	104°50'16.6025"W	1.14	
1482.00	2.180	91.880	1481.71	-7.27	8.21	7.35	3183879.20	1457757.80	40°35'17.0136"N	104°50'16.5599"W	0.68	
1520.00	2.110	90.810	1519.69	-8.69	8.18	8.78	3183880.63	1457757.76	40°35'17.0131"N	104°50'16.5415"W	0.21	
1612.00	3.050	89.330	1611.59	-12.83	8.18	12.92	3183884.77	1457757.77	40°35'17.0129"N	104°50'16.4878"W	1.02	
1701.00	4.600	100.950	1700.39	-18.71	7.53	18.79	3183890.64	1457757.12	40°35'17.0060"N	104°50'16.4117"W	1.94	
1790.00	5.450	107.960	1789.05	-26.25	5.55	26.31	3183898.16	1457755.14	40°35'16.9859"N	104°50'16.3144"W	1.18	
1880.00	6.810	106.690	1878.53	-35.46	2.70	35.49	3183907.34	1457752.29	40°35'16.9571"N	104°50'16.1957"W	1.52	
1969.00	7.900	112.750	1966.80	-46.20	-1.18	46.19	3183918.04	1457748.41	40°35'16.9179"N	104°50'16.0575"W	1.50	
2058.00	10.480	115.630	2054.65	-59.20	-7.05	59.13	3183930.98	1457742.54	40°35'16.8590"N	104°50'15.8903"W	2.94	
2148.00	11.710	116.880	2142.97	-74.80	-14.72	74.65	3183946.50	1457734.87	40°35'16.7821"N	104°50'15.6898"W	1.39	
2237.00	14.280	110.420	2229.69	-93.23	-22.63	93.00	3183964.85	1457726.95	40°35'16.7025"N	104°50'15.4528"W	3.31	
2327.00	16.170	100.860	2316.54	-116.01	-28.87	115.72	3183987.56	1457720.72	40°35'16.6392"N	104°50'15.1590"W	3.49	
2416.00	18.350	87.930	2401.55	-142.21	-30.70	141.90	3184013.75	1457718.89	40°35'16.6192"N	104°50'14.8198"W	4.94	
2505.00	20.100	83.560	2485.59	-171.39	-28.48	171.10	3184042.95	1457721.11	40°35'16.6390"N	104°50'14.4411"W	2.54	

Actual Wellpath Report

DRAKE 5X-HC-11-07-67 AWP

Page 3 of 10

REFERENCE WELLPATH IDENTIFICATION

Operator	NICKEL ROAD OPERATING	Well	DRAKE 5X-HC-11-07-67
Field	WELD COUNTY (NAD83/GRID NORTH)	API/Legal	
Facility	SEC.12-T07N-R67W	Wellbore	DRAKE 5X-HC-11-07-67 AWB
Slot	SLOT#03 DRAKE 5X-HC-11-07-67 (2369'FSL & 1708'FEL SEC.12)		

WELLPATH DATA (202 stations)

MD [ft]	Inclination [°]	Azimuth [°]	TVD [ft]	Vert Sect [ft]	North [ft]	East [ft]	Grid East [US ft]	Grid North [US ft]	Latitude	Longitude	DLS [°/100ft]	Comments
2595.00	20.520	79.790	2570.00	-202.23	-23.95	201.99	3184073.84	1457725.64	40°35'16.6815"N	104°50'14.0403"W	1.53	
2684.00	19.420	83.920	2653.65	-232.25	-19.61	232.06	3184103.90	1457729.97	40°35'16.7221"N	104°50'13.6501"W	2.01	
2773.00	20.780	84.720	2737.23	-262.65	-16.59	262.49	3184134.34	1457732.99	40°35'16.7497"N	104°50'13.2554"W	1.56	
2863.00	18.860	76.040	2821.91	-292.62	-11.61	292.52	3184164.36	1457737.97	40°35'16.7966"N	104°50'12.8658"W	3.90	
2952.00	17.240	86.270	2906.55	-319.71	-7.28	319.65	3184191.49	1457742.30	40°35'16.8374"N	104°50'12.5137"W	3.99	
3041.00	17.580	96.810	2991.50	-346.23	-8.02	346.16	3184218.00	1457741.57	40°35'16.8282"N	104°50'12.1701"W	3.56	
3130.00	18.140	100.270	3076.21	-373.25	-12.08	373.14	3184244.98	1457737.50	40°35'16.7860"N	104°50'11.8208"W	1.35	
3220.00	19.310	92.850	3161.46	-401.93	-15.32	401.79	3184273.63	1457734.26	40°35'16.7519"N	104°50'11.4498"W	2.95	
3309.00	19.350	81.830	3245.47	-431.22	-13.96	431.10	3184302.93	1457735.63	40°35'16.7632"N	104°50'11.0699"W	4.09	
3398.00	19.800	76.410	3329.33	-460.41	-8.32	460.34	3184332.18	1457741.27	40°35'16.8168"N	104°50'10.6902"W	2.10	
3487.00	19.180	81.710	3413.24	-489.47	-2.67	489.47	3184361.30	1457746.92	40°35'16.8705"N	104°50'10.3122"W	2.10	
3577.00	19.010	79.760	3498.29	-518.47	2.07	518.52	3184390.36	1457751.65	40°35'16.9151"N	104°50'9.9352"W	0.73	
3666.00	19.260	80.130	3582.37	-547.14	7.16	547.25	3184419.08	1457756.75	40°35'16.9633"N	104°50'9.5624"W	0.31	
3755.00	19.440	79.270	3666.34	-576.10	12.43	576.26	3184448.09	1457762.02	40°35'17.0133"N	104°50'9.1858"W	0.38	
3844.00	19.310	81.270	3750.30	-605.14	17.42	605.36	3184477.19	1457767.01	40°35'17.0604"N	104°50'8.8082"W	0.76	
3933.00	18.930	80.750	3834.39	-633.88	21.98	634.15	3184505.98	1457771.56	40°35'17.1033"N	104°50'8.4346"W	0.47	
4023.00	19.340	80.810	3919.42	-662.95	26.71	663.27	3184535.10	1457776.29	40°35'17.1479"N	104°50'8.0567"W	0.46	
4112.00	19.840	77.240	4003.27	-692.17	32.39	692.55	3184564.38	1457781.98	40°35'17.2019"N	104°50'7.6766"W	1.46	
4202.00	19.980	78.470	4087.89	-722.06	38.84	722.51	3184594.34	1457788.43	40°35'17.2634"N	104°50'7.2877"W	0.49	
4291.00	19.050	72.730	4171.79	-750.75	46.19	751.28	3184623.11	1457795.78	40°35'17.3339"N	104°50'6.9140"W	2.39	
4380.00	18.680	63.900	4256.02	-777.32	56.78	777.96	3184649.79	1457806.36	40°35'17.4365"N	104°50'6.5673"W	3.23	
4470.00	16.680	86.040	4341.86	-803.10	64.02	803.82	3184675.65	1457813.60	40°35'17.5062"N	104°50'6.2314"W	7.74	
4559.00	18.040	85.440	4426.81	-829.56	66.00	830.30	3184702.13	1457815.58	40°35'17.5237"N	104°50'5.8880"W	1.54	
4648.00	18.550	83.910	4511.31	-857.34	68.60	858.11	3184729.94	1457818.18	40°35'17.5473"N	104°50'5.5272"W	0.79	
4738.00	18.910	83.520	4596.54	-886.03	71.76	886.84	3184758.66	1457821.34	40°35'17.5765"N	104°50'5.1546"W	0.42	
4827.00	19.050	83.310	4680.70	-914.75	75.08	915.59	3184787.42	1457824.66	40°35'17.6071"N	104°50'4.7816"W	0.18	
4916.00	18.990	84.700	4764.85	-943.56	78.11	944.44	3184816.26	1457827.69	40°35'17.6349"N	104°50'4.4074"W	0.51	
5005.00	19.070	83.400	4848.98	-972.39	81.12	973.30	3184845.12	1457830.70	40°35'17.6625"N	104°50'4.0331"W	0.48	
5095.00	19.020	84.280	4934.06	-1001.55	84.27	1002.50	3184874.32	1457833.85	40°35'17.6915"N	104°50'3.6543"W	0.32	
5184.00	18.910	86.720	5018.23	-1030.36	86.54	1031.32	3184903.15	1457836.12	40°35'17.7118"N	104°50'3.2804"W	0.90	

Actual Wellpath Report

DRAKE 5X-HC-11-07-67 AWP

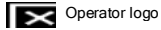
Page 4 of 10

REFERENCE WELLPATH IDENTIFICATION

Operator	NICKEL ROAD OPERATING	Well	DRAKE 5X-HC-11-07-67
Field	WELD COUNTY (NAD83/GRID NORTH)	API/Legal	
Facility	SEC.12-T07N-R67W	Wellbore	DRAKE 5X-HC-11-07-67 AWP
Slot	SLOT#03 DRAKE 5X-HC-11-07-67 (2369'FSL & 1708'FEL SEC.12)		

WELLPATH DATA (202 stations)

MD [ft]	Inclination [°]	Azimuth [°]	TVD [ft]	Vert Sect [ft]	North [ft]	East [ft]	Grid East [US ft]	Grid North [US ft]	Latitude	Longitude	DLS [°/100ft]	Comments
5274.00	18.970	85.710	5103.35	-1059.48	88.47	1060.47	3184932.29	1457838.05	40°35'17.7287"N	104°50'2.9025"W	0.37	
5363.00	18.840	85.070	5187.55	-1088.20	90.79	1089.21	3184961.03	1457840.37	40°35'17.7495"N	104°50'2.5297"W	0.27	
5452.00	19.200	84.800	5271.69	-1117.06	93.35	1118.11	3184989.93	1457842.93	40°35'17.7726"N	104°50'2.1550"W	0.42	
5541.00	18.670	85.570	5355.88	-1145.81	95.77	1146.88	3185018.70	1457845.36	40°35'17.7945"N	104°50'1.7818"W	0.66	
5631.00	9.110	73.750	5443.16	-1167.03	98.89	1168.14	3185039.96	1457848.47	40°35'17.8237"N	104°50'1.5060"W	11.03	
5720.00	9.450	92.130	5531.01	-1181.08	100.59	1182.21	3185054.03	1457850.17	40°35'17.8394"N	104°50'1.3235"W	3.34	
5809.00	15.340	99.890	5617.91	-1200.02	98.29	1201.12	3185072.94	1457847.88	40°35'17.8153"N	104°50'1.0785"W	6.86	
5899.00	19.800	95.080	5703.69	-1226.98	94.90	1228.05	3185099.87	1457844.48	40°35'17.7798"N	104°50'0.7298"W	5.21	
5988.00	20.760	83.600	5787.21	-1257.68	95.32	1258.75	3185130.57	1457844.90	40°35'17.7817"N	104°50'0.3318"W	4.59	
6077.00	21.970	86.660	5870.09	-1289.95	98.05	1291.05	3185162.86	1457847.63	40°35'17.8062"N	104°49'59.9130"W	1.85	
6167.00	21.870	84.530	5953.59	-1323.41	100.63	1324.54	3185196.36	1457850.21	40°35'17.8292"N	104°49'59.4786"W	0.89	
6256.00	21.320	87.020	6036.34	-1356.04	103.05	1357.20	3185229.02	1457852.63	40°35'17.8507"N	104°49'59.0551"W	1.20	
6345.00	21.290	85.160	6119.26	-1388.28	105.25	1389.46	3185261.27	1457854.84	40°35'17.8701"N	104°49'58.6368"W	0.76	
6435.00	20.490	86.680	6203.34	-1420.26	107.54	1421.47	3185293.28	1457857.13	40°35'17.8904"N	104°49'58.2217"W	1.07	
6524.00	21.160	86.820	6286.53	-1451.83	109.34	1453.06	3185324.87	1457858.92	40°35'17.9057"N	104°49'57.8121"W	0.75	
6613.00	21.030	84.100	6369.57	-1483.72	111.87	1484.98	3185356.79	1457861.45	40°35'17.9284"N	104°49'57.3981"W	1.11	
6703.00	21.900	83.520	6453.32	-1516.42	115.42	1517.72	3185389.53	1457865.01	40°35'17.9611"N	104°49'56.9733"W	1.00	
6792.00	21.460	83.680	6536.03	-1549.06	119.09	1550.40	3185422.20	1457868.67	40°35'17.9949"N	104°49'56.5495"W	0.50	
6882.00	21.600	83.100	6619.75	-1581.82	122.89	1583.20	3185455.01	1457872.47	40°35'18.0300"N	104°49'56.1239"W	0.28	
6971.00	21.110	83.550	6702.64	-1613.97	126.66	1615.39	3185487.20	1457876.24	40°35'18.0648"N	104°49'55.7063"W	0.58	
7060.00	17.600	77.950	6786.60	-1643.02	131.27	1644.49	3185516.29	1457880.85	40°35'18.1082"N	104°49'55.3287"W	4.46	
7150.00	9.520	56.880	6874.07	-1662.53	138.19	1664.07	3185535.88	1457887.78	40°35'18.1752"N	104°49'55.0742"W	10.38	
7239.00	2.830	341.070	6962.59	-1667.93	144.31	1669.54	3185541.34	1457893.89	40°35'18.2352"N	104°49'55.0028"W	10.38	
7329.00	8.220	273.190	7052.21	-1660.75	146.77	1662.38	3185534.19	1457896.35	40°35'18.2600"N	104°49'55.0953"W	8.46	
7418.00	18.680	281.940	7138.66	-1640.36	150.08	1642.03	3185513.83	1457899.66	40°35'18.2943"N	104°49'55.3588"W	11.94	
7507.00	26.450	284.820	7220.78	-1607.12	158.11	1608.87	3185480.67	1457907.70	40°35'18.3761"N	104°49'55.7878"W	8.82	
7597.00	34.050	272.150	7298.55	-1562.39	164.20	1564.20	3185436.01	1457913.78	40°35'18.4396"N	104°49'56.3661"W	10.99	
7686.00	41.770	269.430	7368.72	-1507.76	164.84	1509.57	3185381.38	1457914.42	40°35'18.4500"N	104°49'57.0741"W	8.87	
7776.00	53.750	271.340	7429.11	-1441.25	165.39	1443.07	3185314.88	1457914.98	40°35'18.4604"N	104°49'57.9360"W	13.40	
7865.00	65.840	270.150	7473.81	-1364.48	166.34	1366.31	3185238.12	1457915.92	40°35'18.4755"N	104°49'58.9309"W	13.63	



Actual Wellpath Report

DRAKE 5X-HC-11-07-67 AWP

Page 5 of 10



REFERENCE WELLPATH IDENTIFICATION			
Operator	NICKEL ROAD OPERATING	Well	DRAKE 5X-HC-11-07-67
Field	WELD COUNTY (NAD83/GRID NORTH)	API/Legal	
Facility	SEC.12-T07N-R67W	Wellbore	DRAKE 5X-HC-11-07-67 AWP
Slot	SLOT#03 DRAKE 5X-HC-11-07-67 (2369'FSL & 1708'FEL SEC.12)		

WELLPATH DATA (202 stations)												
MD [ft]	Inclination [°]	Azimuth [°]	TVD [ft]	Vert Sect [ft]	North [ft]	East [ft]	Grid East [US ft]	Grid North [US ft]	Latitude	Longitude	DLS [°/100ft]	Comments
7954.00	75.760	269.360	7503.04	-1280.55	165.97	1282.36	3185154.18	1457915.55	40°35'18.4780"N	104°50'0.0189"W	11.18	
8044.00	86.270	267.990	7517.08	-1191.83	163.90	1193.62	3185065.44	1457913.48	40°35'18.4641"N	104°50'1.1694"W	11.77	
8133.00	89.480	267.590	7520.38	-1103.01	160.47	1104.76	3184976.58	1457910.05	40°35'18.4369"N	104°50'2.3214"W	3.63	
8178.00	92.740	269.100	7519.51	-1058.06	159.17	1059.79	3184931.62	1457908.75	40°35'18.4274"N	104°50'2.9044"W	7.98	
8223.00	93.200	269.470	7517.17	-1013.13	158.61	1014.86	3184886.68	1457908.19	40°35'18.4251"N	104°50'3.4869"W	1.31	
8312.00	95.860	269.320	7510.15	-924.44	157.67	926.15	3184797.97	1457907.25	40°35'18.4225"N	104°50'4.6367"W	2.99	
8401.00	94.930	267.640	7501.78	-835.90	155.32	837.58	3184709.41	1457904.90	40°35'18.4058"N	104°50'5.7849"W	2.15	
8491.00	93.880	265.860	7494.86	-746.37	150.23	747.99	3184619.82	1457899.82	40°35'18.3622"N	104°50'6.9466"W	2.29	
8580.00	93.200	265.450	7489.37	-657.87	143.50	659.42	3184531.25	1457893.09	40°35'18.3022"N	104°50'8.0952"W	0.89	
8670.00	93.230	266.200	7484.32	-568.33	136.96	569.80	3184441.64	1457886.54	40°35'18.2442"N	104°50'9.2574"W	0.83	
8759.00	94.070	269.900	7478.65	-479.61	133.94	481.05	3184352.89	1457883.52	40°35'18.2209"N	104°50'10.4081"W	4.25	
8848.00	94.250	269.000	7472.20	-390.87	133.09	392.29	3184264.13	1457882.67	40°35'18.2191"N	104°50'11.5586"W	1.03	
8937.00	94.100	267.200	7465.72	-302.19	130.14	303.58	3184175.42	1457879.73	40°35'18.1965"N	104°50'12.7087"W	2.02	
9027.00	94.040	267.400	7459.33	-212.57	125.91	213.90	3184085.75	1457875.50	40°35'18.1614"N	104°50'13.8714"W	0.23	
9116.00	93.940	270.030	7453.14	-123.84	123.92	125.15	3183997.00	1457873.51	40°35'18.1483"N	104°50'15.0219"W	2.95	
9205.00	94.780	270.300	7446.37	-35.10	124.18	36.41	3183908.26	1457873.76	40°35'18.1573"N	104°50'16.1721"W	0.99	
9294.00	95.020	272.820	7438.77	53.55	126.59	-52.23	3183819.63	1457876.18	40°35'18.1877"N	104°50'17.3207"W	2.83	
9384.00	94.470	273.280	7431.32	143.16	131.36	-141.79	3183730.06	1457880.95	40°35'18.2415"N	104°50'18.4811"W	0.80	
9473.00	94.500	275.220	7424.36	231.71	137.94	-230.27	3183641.59	1457887.52	40°35'18.3130"N	104°50'19.6272"W	2.17	
9562.00	95.740	275.010	7416.42	320.08	145.84	-318.56	3183553.30	1457895.43	40°35'18.3976"N	104°50'20.7708"W	1.41	
9652.00	97.070	270.550	7406.37	409.42	150.18	-407.87	3183464.00	1457899.77	40°35'18.4470"N	104°50'21.9279"W	5.14	
9741.00	99.710	269.350	7393.39	497.46	150.11	-495.91	3183375.96	1457899.69	40°35'18.4528"N	104°50'23.0690"W	3.25	
9831.00	96.970	267.110	7380.33	586.41	147.35	-584.90	3183286.97	1457896.94	40°35'18.4321"N	104°50'24.2227"W	3.92	
9920.00	96.140	266.800	7370.17	674.65	142.66	-673.19	3183198.68	1457892.24	40°35'18.3922"N	104°50'25.3675"W	0.99	
10009.00	94.900	268.130	7361.61	763.10	138.74	-761.69	3183110.19	1457888.32	40°35'18.3600"N	104°50'26.5149"W	2.04	
10099.00	92.830	269.460	7355.55	852.85	136.85	-851.45	3183020.42	1457886.44	40°35'18.3479"N	104°50'27.6786"W	2.73	
10188.00	92.250	272.760	7351.60	941.74	138.58	-940.34	3182931.54	1457888.16	40°35'18.3715"N	104°50'28.8305"W	3.76	
10278.00	92.530	273.810	7347.85	1031.56	143.73	-1030.11	3182841.77	1457893.31	40°35'18.4290"N	104°50'29.9936"W	1.21	
10367.00	93.760	274.570	7342.96	1120.25	150.22	-1118.74	3182753.15	1457899.80	40°35'18.4996"N	104°50'31.1417"W	1.62	
10456.00	94.440	273.620	7336.60	1208.86	156.56	-1207.28	3182664.60	1457906.14	40°35'18.5688"N	104°50'32.2887"W	1.31	

Actual Wellpath Report

DRAKE 5X-HC-11-07-67 AWP

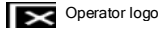
Page 6 of 10

REFERENCE WELLPATH IDENTIFICATION

Operator	NICKEL ROAD OPERATING	Well	DRAKE 5X-HC-11-07-67
Field	WELD COUNTY (NAD83/GRID NORTH)	API/Legal	
Facility	SEC.12-T07N-R67W	Wellbore	DRAKE 5X-HC-11-07-67 AWB
Slot	SLOT#03 DRAKE 5X-HC-11-07-67 (2369'FSL & 1708'FEL SEC.12)		

WELLPATH DATA (202 stations)

MD [ft]	Inclination [°]	Azimuth [°]	TVD [ft]	Vert Sect [ft]	North [ft]	East [ft]	Grid East [US ft]	Grid North [US ft]	Latitude	Longitude	DLS [°/100ft]	Comments
10496.00	94.220	272.530	7333.58	1248.71	158.70	-1247.11	3182624.78	1457908.28	40°35'18.5928"N	104°50'32.8047"W	2.77	
10585.00	94.280	270.480	7326.98	1337.45	161.03	-1335.83	3182536.06	1457910.61	40°35'18.6223"N	104°50'33.9544"W	2.30	
10675.00	96.080	270.120	7318.86	1427.07	161.50	-1425.45	3182446.44	1457911.08	40°35'18.6335"N	104°50'35.1160"W	2.04	
10764.00	96.290	270.620	7309.27	1515.56	162.07	-1513.93	3182357.96	1457911.65	40°35'18.6457"N	104°50'36.2628"W	0.61	
10854.00	92.400	269.850	7302.45	1605.28	162.44	-1603.66	3182268.24	1457912.02	40°35'18.6559"N	104°50'37.4257"W	4.41	
10943.00	94.470	268.190	7297.12	1694.08	160.92	-1692.48	3182179.42	1457910.50	40°35'18.6473"N	104°50'38.5770"W	2.98	
11032.00	94.220	265.320	7290.38	1782.61	155.90	-1781.07	3182090.83	1457905.48	40°35'18.6042"N	104°50'39.7258"W	3.23	
11122.00	93.510	265.670	7284.31	1872.05	148.84	-1870.59	3182001.32	1457898.43	40°35'18.5410"N	104°50'40.8867"W	0.88	
11211.00	92.770	266.770	7279.43	1960.65	142.99	-1959.26	3181912.65	1457892.57	40°35'18.4896"N	104°50'42.0365"W	1.49	
11301.00	91.940	269.350	7275.74	2050.48	139.94	-2049.12	3181822.79	1457889.53	40°35'18.4661"N	104°50'43.2016"W	3.01	
11390.00	93.970	271.580	7271.15	2139.35	140.66	-2137.99	3181733.92	1457890.25	40°35'18.4797"N	104°50'44.3534"W	3.39	
11480.00	90.550	272.510	7267.60	2229.24	143.87	-2227.85	3181644.06	1457893.45	40°35'18.5180"N	104°50'45.5177"W	3.94	
11569.00	94.250	271.840	7263.87	2318.11	147.25	-2316.69	3181555.23	1457896.83	40°35'18.5578"N	104°50'46.6689"W	4.22	
11658.00	93.270	268.420	7258.03	2406.90	147.45	-2405.48	3181466.43	1457897.03	40°35'18.5662"N	104°50'47.8198"W	3.99	
11748.00	91.790	269.300	7254.06	2496.77	145.66	-2495.38	3181376.55	1457895.24	40°35'18.5551"N	104°50'48.9850"W	1.91	
11837.00	93.670	272.000	7249.82	2585.66	146.67	-2584.26	3181287.67	1457896.25	40°35'18.5715"N	104°50'50.1369"W	3.69	
11926.00	92.680	274.330	7244.89	2674.42	151.57	-2672.98	3181198.95	1457901.15	40°35'18.6264"N	104°50'51.2864"W	2.84	
12015.00	91.260	273.540	7241.83	2763.22	157.68	-2761.71	3181110.22	1457907.26	40°35'18.6932"N	104°50'52.4359"W	1.83	
12105.00	91.690	272.310	7239.52	2853.11	162.27	-2851.56	3181020.37	1457911.85	40°35'18.7451"N	104°50'53.6001"W	1.45	
12194.00	91.750	270.520	7236.84	2942.06	164.46	-2940.49	3180931.44	1457914.05	40°35'18.7733"N	104°50'54.7525"W	2.01	
12284.00	89.230	269.760	7236.07	3032.04	164.68	-3030.48	3180841.46	1457914.27	40°35'18.7820"N	104°50'55.9188"W	2.92	
12373.00	88.980	267.980	7237.46	3120.99	162.93	-3119.45	3180752.49	1457912.51	40°35'18.7711"N	104°50'57.0721"W	2.02	
12463.00	89.910	267.220	7238.34	3210.86	159.16	-3209.36	3180662.58	1457908.74	40°35'18.7404"N	104°50'58.2379"W	1.33	
12552.00	88.400	266.620	7239.65	3299.66	154.38	-3298.22	3180573.72	1457903.96	40°35'18.6996"N	104°50'59.3901"W	1.83	
12642.00	89.010	268.450	7241.68	3389.51	150.51	-3388.11	3180483.83	1457900.09	40°35'18.6678"N	104°51'0.5555"W	2.14	
12731.00	90.000	269.560	7242.45	3478.47	148.96	-3477.09	3180394.86	1457898.55	40°35'18.6590"N	104°51'1.7090"W	1.67	
12821.00	91.660	268.690	7241.15	3568.42	147.59	-3567.07	3180304.88	1457897.17	40°35'18.6519"N	104°51'2.8753"W	2.08	
12910.00	91.320	267.980	7238.83	3657.32	145.00	-3656.00	3180215.95	1457894.59	40°35'18.6328"N	104°51'4.0282"W	0.88	
13000.00	91.420	267.090	7236.68	3747.17	141.13	-3745.89	3180126.06	1457890.72	40°35'18.6011"N	104°51'5.1937"W	0.99	
13089.00	91.480	265.950	7234.43	3835.91	135.73	-3834.70	3180037.26	1457885.32	40°35'18.5541"N	104°51'6.3452"W	1.28	



Actual Wellpath Report

DRAKE 5X-HC-11-07-67 AWP

Page 7 of 10



REFERENCE WELLPATH IDENTIFICATION

Operator	NICKEL ROAD OPERATING	Well	DRAKE 5X-HC-11-07-67
Field	WELD COUNTY (NAD83/GRID NORTH)	API/Legal	
Facility	SEC.12-T07N-R67W	Wellbore	DRAKE 5X-HC-11-07-67 AWB
Slot	SLOT#03 DRAKE 5X-HC-11-07-67 (2369'FSL & 1708'FEL SEC.12)		

WELLPATH DATA (202 stations)

MD [ft]	Inclination [°]	Azimuth [°]	TVD [ft]	Vert Sect [ft]	North [ft]	East [ft]	Grid East [US ft]	Grid North [US ft]	Latitude	Longitude	DLS [°/100ft]	Comments
13178.00	92.030	265.160	7231.70	3924.52	128.84	-3923.39	3179948.57	1457878.42	40°35'18.4924"N	104°51'7.4954"W	1.08	
13268.00	91.450	264.610	7228.97	4014.03	120.82	-4012.99	3179858.98	1457870.40	40°35'18.4196"N	104°51'8.6575"W	0.89	
13357.00	91.850	264.680	7226.41	4102.52	112.52	-4101.56	3179770.40	1457862.10	40°35'18.3440"N	104°51'9.8063"W	0.46	
13447.00	93.600	267.750	7222.13	4192.14	106.58	-4191.25	3179680.72	1457856.17	40°35'18.2918"N	104°51'10.9693"W	3.92	
13536.00	94.100	270.170	7216.15	4280.89	104.97	-4280.03	3179591.94	1457854.55	40°35'18.2823"N	104°51'12.1202"W	2.77	
13626.00	94.130	271.660	7209.69	4370.66	106.40	-4369.78	3179502.19	1457855.99	40°35'18.3029"N	104°51'13.2834"W	1.65	
13715.00	94.220	271.350	7203.21	4459.41	108.73	-4458.51	3179413.46	1457858.32	40°35'18.3323"N	104°51'14.4332"W	0.36	
13805.00	93.970	272.080	7196.79	4549.16	111.42	-4548.24	3179323.74	1457861.00	40°35'18.3653"N	104°51'15.5960"W	0.86	
13894.00	93.600	272.330	7190.91	4637.93	114.84	-4636.98	3179235.00	1457864.42	40°35'18.4055"N	104°51'16.7458"W	0.50	
13983.00	92.650	273.210	7186.06	4726.74	119.13	-4725.74	3179146.24	1457868.72	40°35'18.4543"N	104°51'17.8959"W	1.45	
14073.00	90.520	271.930	7183.57	4816.64	123.17	-4815.61	3179056.37	1457872.75	40°35'18.5006"N	104°51'19.0603"W	2.76	
14162.00	89.970	269.670	7183.19	4905.63	124.41	-4904.60	3178967.39	1457873.99	40°35'18.5193"N	104°51'20.2135"W	2.61	
14251.00	90.220	267.920	7183.04	4994.59	122.54	-4993.57	3178878.42	1457872.12	40°35'18.5072"N	104°51'21.3670"W	1.99	
14341.00	90.060	266.100	7182.82	5084.40	117.84	-5083.45	3178788.55	1457867.43	40°35'18.4672"N	104°51'22.5323"W	2.03	
14430.00	90.000	266.090	7182.78	5173.13	111.78	-5172.24	3178699.76	1457861.37	40°35'18.4137"N	104°51'23.6837"W	0.07	
14520.00	89.910	265.930	7182.85	5262.84	105.52	-5262.02	3178609.98	1457855.10	40°35'18.3583"N	104°51'24.8480"W	0.20	
14610.00	89.880	266.290	7183.01	5352.56	99.41	-5351.81	3178520.19	1457849.00	40°35'18.3044"N	104°51'26.0124"W	0.40	
14700.00	90.030	268.010	7183.08	5442.40	94.94	-5441.70	3178430.30	1457844.52	40°35'18.2666"N	104°51'27.1778"W	1.92	
14789.00	89.970	268.640	7183.08	5531.33	92.34	-5530.66	3178341.34	1457841.92	40°35'18.2473"N	104°51'28.3311"W	0.71	
14879.00	89.970	269.610	7183.13	5621.29	90.96	-5620.65	3178251.36	1457840.55	40°35'18.2401"N	104°51'29.4976"W	1.08	
14969.00	90.180	270.640	7183.01	5711.29	91.16	-5710.65	3178161.36	1457840.74	40°35'18.2485"N	104°51'30.6641"W	1.17	
15059.00	90.400	271.730	7182.56	5801.28	93.02	-5800.63	3178071.39	1457842.60	40°35'18.2733"N	104°51'31.8301"W	1.24	
15148.00	90.520	272.370	7181.84	5890.25	96.20	-5889.57	3177982.45	1457845.79	40°35'18.3111"N	104°51'32.9826"W	0.73	
15238.00	90.460	272.310	7181.07	5980.21	99.88	-5979.49	3177892.53	1457849.46	40°35'18.3539"N	104°51'34.1478"W	0.09	
15328.00	90.340	273.270	7180.44	6070.14	104.26	-6069.38	3177802.64	1457853.84	40°35'18.4036"N	104°51'35.3124"W	1.07	
15417.00	90.520	273.650	7179.78	6159.02	109.63	-6158.21	3177713.81	1457859.21	40°35'18.4630"N	104°51'36.4633"W	0.47	
15507.00	90.520	271.160	7178.96	6248.97	113.41	-6248.12	3177623.90	1457862.99	40°35'18.5067"N	104°51'37.6283"W	2.77	
15597.00	90.430	269.830	7178.21	6338.96	114.18	-6338.11	3177533.91	1457863.77	40°35'18.5208"N	104°51'38.7947"W	1.48	
15687.00	90.490	270.340	7177.49	6428.96	114.32	-6428.11	3177443.92	1457863.90	40°35'18.5285"N	104°51'39.9611"W	0.57	
15776.00	90.520	270.200	7176.71	6517.95	114.74	-6517.11	3177354.93	1457864.32	40°35'18.5390"N	104°51'41.1146"W	0.16	

Actual Wellpath Report

DRAKE 5X-HC-11-07-67 AWP

Page 8 of 10

REFERENCE WELLPATH IDENTIFICATION

Operator	NICKEL ROAD OPERATING	Well	DRAKE 5X-HC-11-07-67
Field	WELD COUNTY (NAD83/GRID NORTH)	API/Legal	
Facility	SEC.12-T07N-R67W	Wellbore	DRAKE 5X-HC-11-07-67 AWP
Slot	SLOT#03 DRAKE 5X-HC-11-07-67 (2369'FSL & 1708'FEL SEC.12)		

WELLPATH DATA (202 stations) † = interpolated, ‡ = extrapolated station

MD [ft]	Inclination [°]	Azimuth [°]	TVD [ft]	Vert Sect [ft]	North [ft]	East [ft]	Grid East [US ft]	Grid North [US ft]	Latitude	Longitude	DLS [°/100ft]	Comments
15865.00	90.550	269.940	7175.87	6606.94	114.85	-6606.10	3177265.93	1457864.43	40°35'18.5464"N	104°51'42.2681"W	0.29	
15955.00	89.940	269.760	7175.49	6696.94	114.61	-6696.10	3177175.94	1457864.19	40°35'18.5505"N	104°51'43.4346"W	0.71	
16044.00	90.120	270.040	7175.44	6785.93	114.45	-6785.10	3177086.94	1457864.04	40°35'18.5553"N	104°51'44.5881"W	0.37	
16133.00	90.090	270.130	7175.28	6874.92	114.59	-6874.10	3176997.94	1457864.17	40°35'18.5629"N	104°51'45.7417"W	0.11	
16223.00	90.830	270.940	7174.56	6964.92	115.43	-6964.09	3176907.95	1457865.01	40°35'18.5776"N	104°51'46.9080"W	1.22	
16313.00	91.690	271.110	7172.58	7054.90	117.04	-7054.05	3176817.99	1457866.62	40°35'18.5999"N	104°51'48.0739"W	0.97	
16402.00	92.030	270.860	7169.69	7143.85	118.57	-7142.99	3176729.06	1457868.15	40°35'18.6213"N	104°51'49.2265"W	0.47	
16491.00	90.340	269.760	7167.85	7232.82	119.05	-7231.97	3176640.08	1457868.63	40°35'18.6323"N	104°51'50.3797"W	2.27	
16581.00	89.820	269.190	7167.72	7322.80	118.22	-7321.96	3176550.09	1457867.81	40°35'18.6306"N	104°51'51.5462"W	0.86	
16670.00	89.880	269.520	7167.96	7411.78	117.22	-7410.96	3176461.10	1457866.80	40°35'18.6270"N	104°51'52.6998"W	0.38	
16759.00	89.780	269.490	7168.22	7500.76	116.45	-7499.95	3176372.10	1457866.03	40°35'18.6257"N	104°51'53.8534"W	0.12	
16849.00	89.850	269.260	7168.51	7590.74	115.47	-7589.95	3176282.11	1457865.05	40°35'18.6223"N	104°51'55.0199"W	0.27	
16938.00	89.570	269.380	7168.96	7679.72	114.41	-7678.94	3176193.12	1457864.00	40°35'18.6182"N	104°51'56.1735"W	0.34	
17027.00	88.920	268.750	7170.13	7768.68	112.96	-7767.92	3176104.15	1457862.54	40°35'18.6101"N	104°51'57.3269"W	1.02	
17116.00	88.980	269.180	7171.77	7857.63	111.35	-7856.89	3176015.18	1457860.94	40°35'18.6005"N	104°51'58.4802"W	0.49	
17206.00	88.980	268.600	7173.37	7947.57	109.61	-7946.86	3175925.21	1457859.19	40°35'18.5897"N	104°51'59.6465"W	0.64	
17295.00	88.890	268.530	7175.02	8036.50	107.38	-8035.82	3175836.26	1457856.97	40°35'18.5739"N	104°52'0.7997"W	0.13	
17385.00	89.110	268.410	7176.59	8126.43	104.98	-8125.77	3175746.31	1457854.56	40°35'18.5565"N	104°52'1.9658"W	0.28	
17474.00	88.890	268.260	7178.15	8215.34	102.39	-8214.72	3175657.36	1457851.98	40°35'18.5372"N	104°52'3.1189"W	0.30	
17563.00	89.110	267.870	7179.70	8304.24	99.39	-8303.65	3175568.43	1457848.97	40°35'18.5138"N	104°52'4.2719"W	0.50	
17646.00	89.020	267.620	7181.05	8387.13	96.12	-8386.58	3175485.51	1457845.71	40°35'18.4874"N	104°52'5.3470"W	0.32	LAST BH MWD SURVEY
17670.00†	89.020	267.620	7181.46	8411.09	95.13	-8410.56	3175461.53	1457844.71	40°35'18.4792"N	104°52'5.6579"W	0.00	PROJECTION TO BIT

Actual Wellpath Report

DRAKE 5X-HC-11-07-67 AWP

Page 9 of 10

REFERENCE WELLPATH IDENTIFICATION

Operator	NICKEL ROAD OPERATING	Well	DRAKE 5X-HC-11-07-67
Field	WELD COUNTY (NAD83/GRID NORTH)	API/Legal	
Facility	SEC.12-T07N-R67W	Wellbore	DRAKE 5X-HC-11-07-67 AWB
Slot	SLOT#03 DRAKE 5X-HC-11-07-67 (2369'FSL & 1708'FEL SEC.12)		

HOLE & CASING SECTIONS - Ref Wellbore: DRAKE 5X-HC-11-07-67 AWB Ref Wellpath: DRAKE 5X-HC-11-07-67 AWP

String/Diameter	Start MD [ft]	End MD [ft]	Interval [ft]	Start TVD [ft]	End TVD [ft]	Start N/S [ft]	Start E/W [ft]	End N/S [ft]	End E/W [ft]
13.5in Open Hole	23.00	1575.00	1552.00	23.00	1574.64	0.00	0.00	8.17	11.07
9.625in Casing Surface	23.00	1556.00	1533.00	23.00	1555.66	0.00	0.00	8.17	10.22
8.5in Open Hole	1575.00	17670.00	16095.00	1574.64	7181.46	8.17	11.07	95.13	-8410.56

TARGETS

Name	TVD [ft]	North [ft]	East [ft]	Grid East [US ft]	Grid North [US ft]	Latitude	Longitude	Shape
SEC.11-T07N-R67W	7.00	0.02	0.00	3183871.85	1457749.61	40°35'16.9332"N	104°50'16.6560"W	polygon
2D Polygon: dimensions not calculated								
SEC.12-T07N-R67W	7.00	0.02	0.00	3183871.85	1457749.61	40°35'16.9332"N	104°50'16.6560"W	polygon
2D Polygon: dimensions not calculated								
DRAKE 5X-HC-11-07-67 BHL REV-2	7166.35	88.01	-8367.76	3175504.32	1457837.59	40°35'18.4059"N	104°52'5.1039"W	point
DRAKE 5X-HC-11-07-67 BHL (2505'FSL & 460'FWL SEC.11)	7170.00	40.93	-8371.45	3175500.64	1457790.52	40°35'17.9410"N	104°52'5.1560"W	point
DRAKE 5X-HC-11-07-67 LP REV-2 (2511'FSL & 641'FEL SEC.12)	7556.00	158.66	1066.00	3184937.82	1457908.24	40°35'18.4219"N	104°50'2.8240"W	point
DRAKE 5X-HC-11-07-67 LP REV-4 (2511'FSL & 641'FEL SEC.12)	7576.00	152.62	1066.45	3184938.27	1457902.20	40°35'18.3621"N	104°50'2.8187"W	point
DRAKE 5X-HC-11-07-67 LP REV-3 (2511'FSL & 587'FEL SEC.12)	7579.86	158.66	1120.00	3184991.82	1457908.24	40°35'18.4178"N	104°50'2.1241"W	point
DRAKE 5X-HC-11-07-67 LP ON PLAT (2518'FSL & 460'FEL SEC.12)	7589.00	165.70	1246.95	3185118.76	1457915.28	40°35'18.4780"N	104°50'0.4780"W	point

TARGETS

Name	TVD [ft]	North [ft]	East [ft]	Grid East [US ft]	Grid North [US ft]	Latitude	Longitude	Shape
DRAKE 5X-HC-11-07-67 LP REV-1 (2518'FSL & 641'FEL SEC.12)	7589.00	165.66	1066.00	3184937.82	1457915.24	40°35'18.4910"N	104°50'2.8233"W	point
SEC.11&12-T07N-R67W HARDLINES 460'	7589.00	0.02	0.00	3183871.85	1457749.61	40°35'16.9332"N	104°50'16.6560"W	polygon
2D Polygon: dimensions not calculated								

WELLPATH COMPOSITION - Ref Wellbore: DRAKE 5X-HC-11-07-67 AWB Ref Wellpath: DRAKE 5X-HC-11-07-67 AWP

Start MD [ft]	End MD [ft]	Positional Uncertainty Model	Log Name/Comment	Wellbore	Survey Date
23.00	1520.00	BHI NaviTrak (Rotating)	BHGE SURFACE SURVEYS <23 - 1520>	DRAKE 5X-HC-11-07-67 AWB	
1520.00	17670.00	BH AutoTrak Curve (Short)	BHGE AUTOTRAK CURVE (SHORT) <1520 - 17646>	DRAKE 5X-HC-11-07-67 AWB	

Actual Wellpath Report

DRAKE 5X-HC-11-07-67 AWP

Page 10 of 10

REFERENCE WELLPATH IDENTIFICATION

Operator	NICKEL ROAD OPERATING	Well	DRAKE 5X-HC-11-07-67
Field	WELD COUNTY (NAD83/GRID NORTH)	API/Legal	
Facility	SEC.12-T07N-R67W	Wellbore	DRAKE 5X-HC-11-07-67 AWB
Slot	SLOT#03 DRAKE 5X-HC-11-07-67 (2369'FSL & 1708'FEL SEC.12)		

WELLPATH COMMENTS

MD [ft]	Inclination [°]	Azimuth [°]	TVD [ft]	Comment
17646.00	89.020	267.620	7181.05	LAST BH MWD SURVEY
17670.00	89.020	267.620	7181.46	PROJECTION TO BIT